

# Weekly SLA Customer Report

Customer NIX\_Production  
Database ID 51



## Harddisk Usage NIX\_PRD\_ABSAPP01

	Free disk space on C: (%)	Total disk space on C: (Gb)	Used disk space on C: (Gb)	Free disk space on E: (%)	Total disk space on E: (Gb)	Used disk space on E: (Gb)
10/25/2025	46	207	112	100	98	0
10/24/2025	46	207	112	100	98	0
10/23/2025	46	207	111	100	98	0
10/22/2025	46	207	111	100	98	0
10/21/2025	46	207	111	100	98	0
10/20/2025	46	207	111	100	98	0
10/19/2025	46	207	111	100	98	0

## Harddisk Usage NIX\_PRD\_ABSAPP04

	Free disk space on C: (%)	Total disk space on C: (Gb)	Used disk space on C: (Gb)
10/25/2025	16	127	107
10/24/2025	16	127	106
10/23/2025	18	127	104
10/22/2025	19	127	103
10/21/2025	16	127	106
10/20/2025	17	127	106
10/19/2025	17	127	106

# Weekly SLA Customer Report

Customer NIX\_Production  
 Database ID 51



Harddisk Usage NIX\_PRD\_ABSBI

	Free disk space on C: (%)	Total disk space on C: (Gb)	Used disk space on C: (Gb)	Free disk space on E: (%)	Total disk space on E: (Gb)	Used disk space on E: (Gb)
10/25/2025	51	179	88	23	700	537
10/24/2025	51	179	87	24	700	535
10/23/2025	52	179	87	24	700	535
10/22/2025	52	179	87	24	700	535
10/21/2025	52	179	87	24	700	535
10/20/2025	52	179	87	24	700	535
10/19/2025	52	179	87	24	700	535

Harddisk Usage NIX\_PRD\_ABSDB01

	Free disk space on C: (%)	Total disk space on C: (Gb)	Used disk space on C: (Gb)	Free disk space on D: (%)	Total disk space on D: (Gb)	Used disk space on D: (Gb)	Free disk space on E: (%)	Total disk space on E: (Gb)	Used disk space on E: (Gb)	Free disk space on F: (%)
10/25/2025	84	554	91	18	586	483	35	605	395	100
10/24/2025	83	554	92	18	586	483	35	605	393	100
10/23/2025	84	554	91	18	586	483	35	605	393	100
10/22/2025	84	554	90	18	586	483	35	605	392	100
10/21/2025	82	554	98	18	586	483	35	605	392	98
10/20/2025	84	554	90	18	586	483	35	605	392	100
10/19/2025	84	554	91	18	586	483	35	605	394	99

# Weekly SLA Customer Report

Customer NIX\_Production  
 Database ID 51



Harddisk Usage NIX\_PRD\_ABSDB02

	Free disk space on C: (%)	Total disk space on C: (Gb)	Used disk space on C: (Gb)	Free disk space on D: (%)	Total disk space on D: (Gb)	Used disk space on D: (Gb)	Free disk space on E: (%)	Total disk space on E: (Gb)	Used disk space on E: (Gb)	Free disk space on F: (%)
10/25/2025	84	574	92	11	488	436	42	684	395	100
10/24/2025	84	574	93	11	488	436	43	684	392	100
10/23/2025	83	574	100	11	488	436	42	684	395	98
10/22/2025	84	574	92	11	488	436	43	684	392	100
10/21/2025	84	574	92	11	488	436	43	684	392	100
10/20/2025	84	574	92	11	488	436	43	684	392	100
10/19/2025	84	574	92	11	488	436	42	684	394	100

Harddisk Usage NIX\_PRD\_ABSWEB02

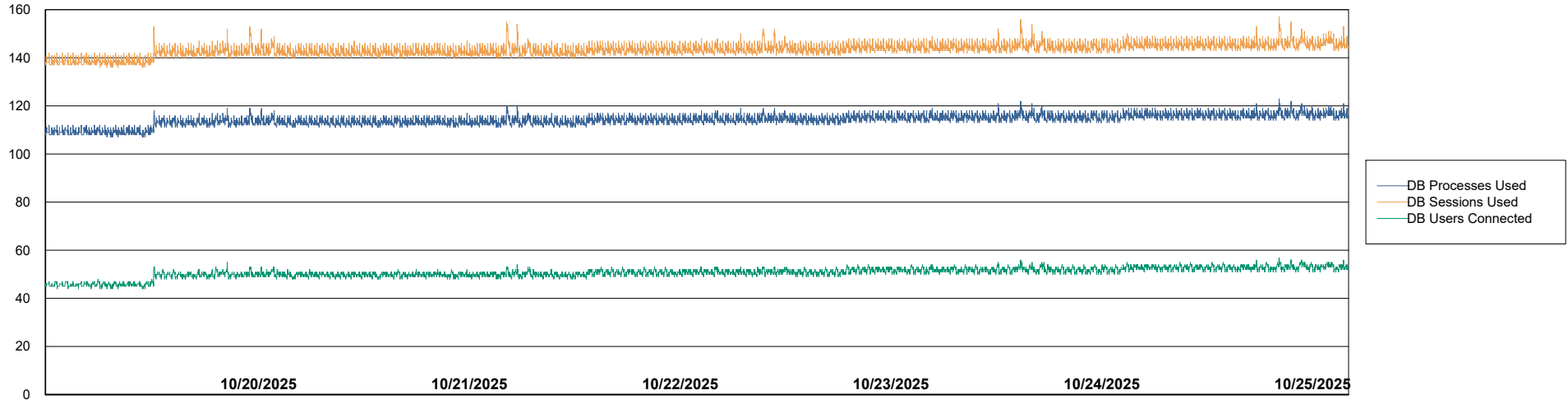
	Free disk space on C: (%)	Total disk space on C: (Gb)	Used disk space on C: (Gb)
10/25/2025	78	300	66
10/24/2025	78	300	66
10/23/2025	78	300	65
10/22/2025	78	300	65
10/21/2025	78	300	65
10/20/2025	78	300	65
10/19/2025	78	300	65

# Weekly SLA Customer Report

Customer NIX\_Production  
Database ID 51



## Database Performance NIX\_PRD\_ABSBI\_ABS1

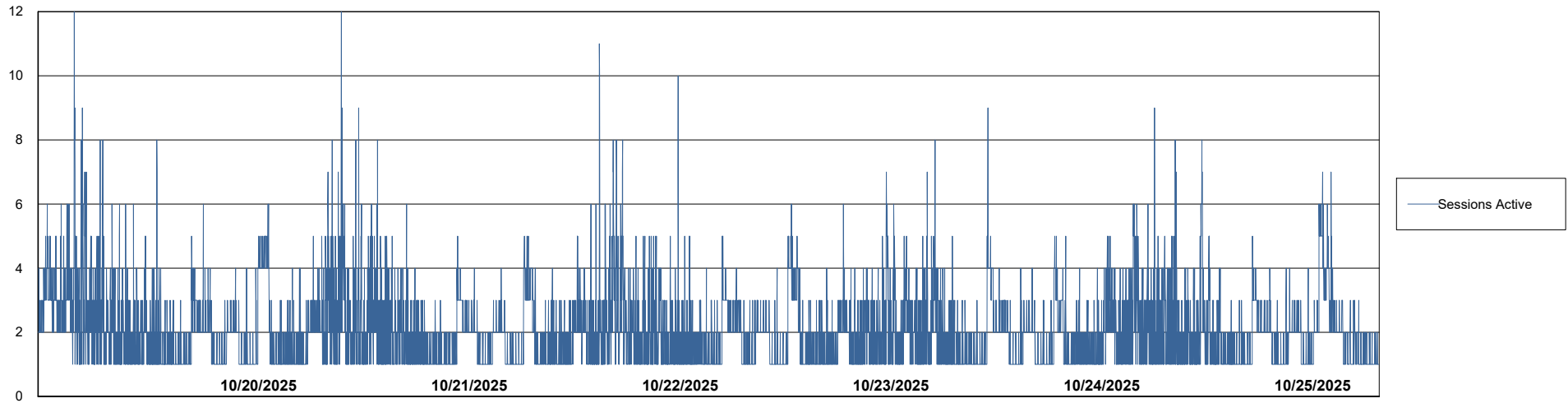
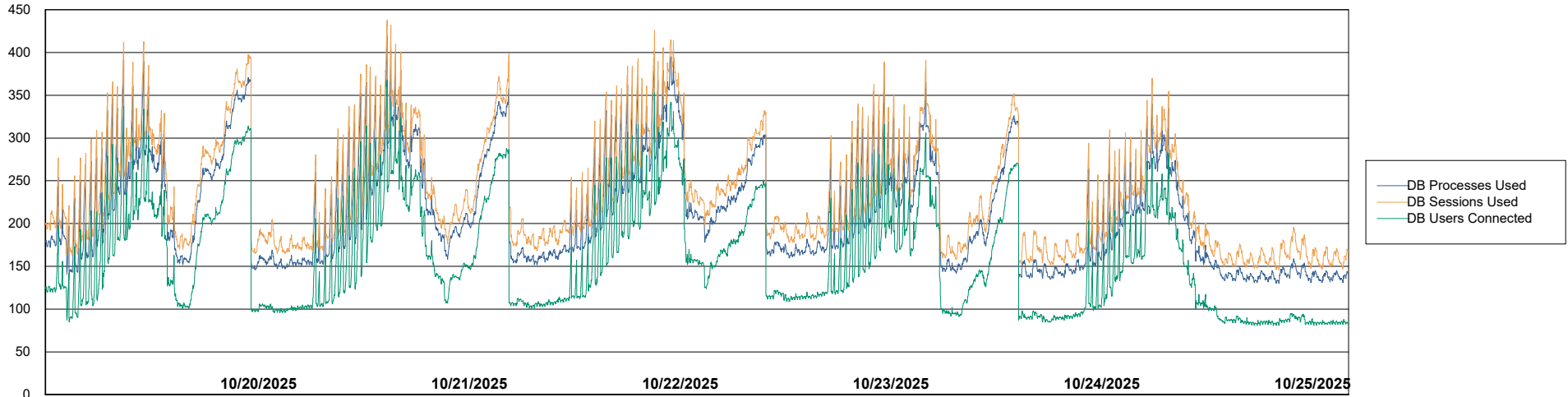


# Weekly SLA Customer Report

Customer NIX\_Production  
Database ID 51



## Database Performance NIX\_PRD\_ABSD01\_ABS1



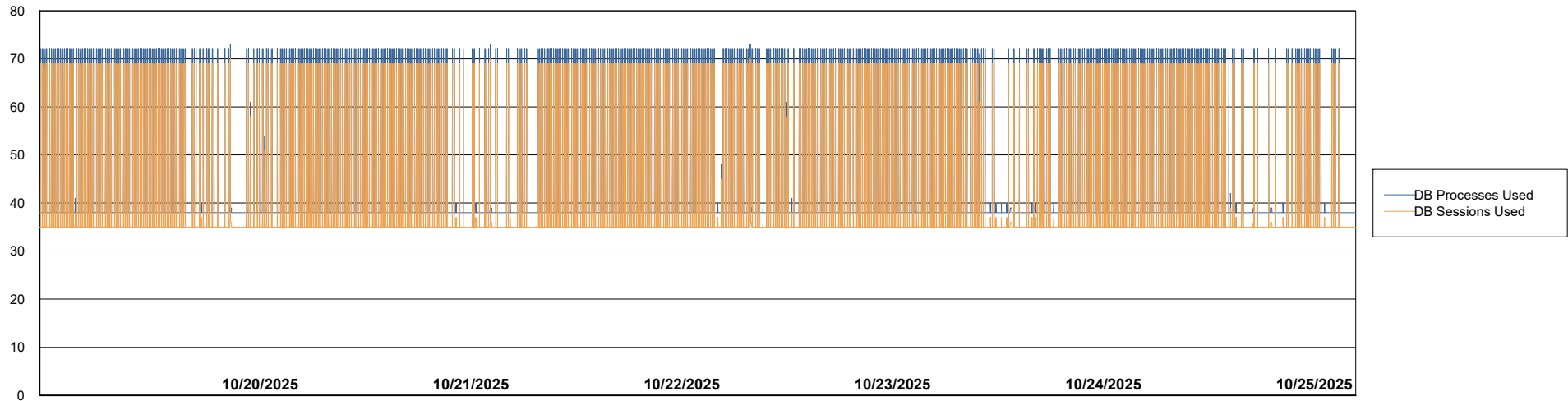
# Weekly SLA Customer Report

Customer NIX\_Production  
Database ID 51



Database Performance NIX\_PRD\_ABSDB02\_HSBABS1

DB Processes Max 300



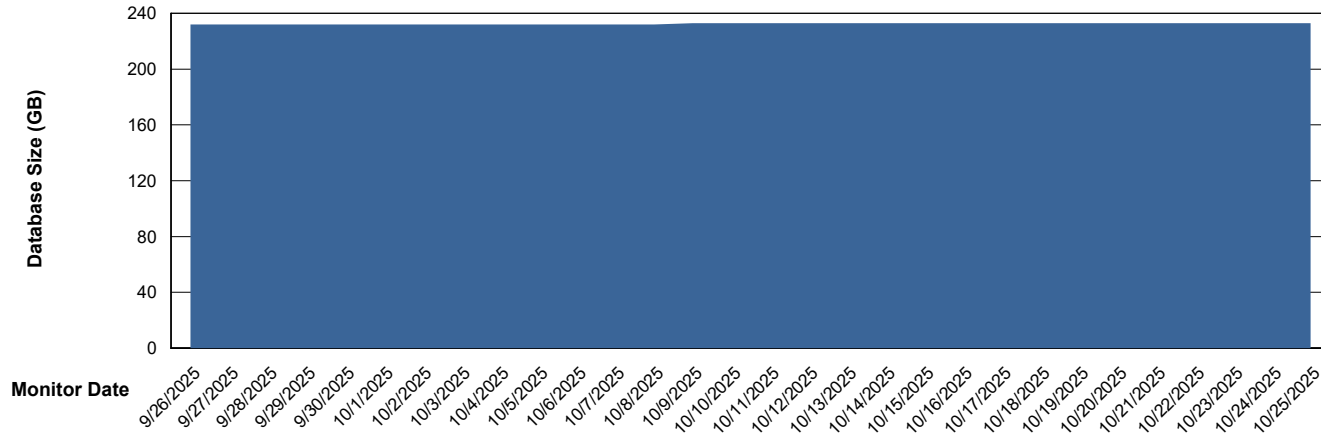
# Weekly SLA Customer Report

Customer NIX\_Production  
Database ID 51



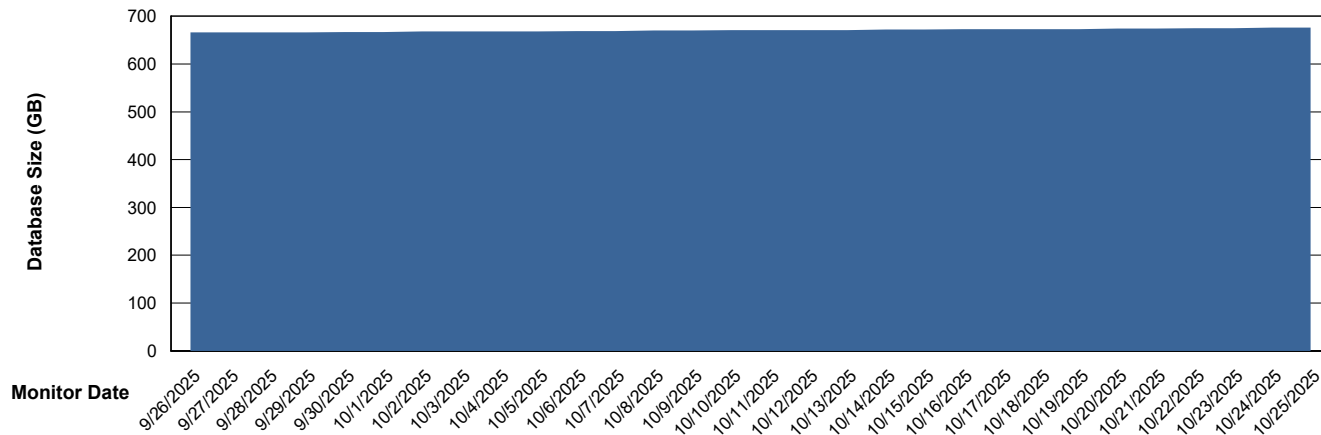
DATABASE SIZE NIX\_PRD\_ABSBI\_ABS1

### Database growth over last month



DATABASE SIZE NIX\_PRD\_ABSDB01\_ABS1

### Database growth over last month



# Weekly SLA Customer Report

Customer NIX\_Production  
 Database ID 51



Database Tablespace NIX\_PRD\_ABSBI\_ABS1

Date	Tablespace Name	Filesize (Gb)	Usedsize (Gb)	Percentage free
10/25/2025	ABSDATA	119	101	15
	INDX	160	131	18
10/24/2025	ABSDATA	119	101	15
	INDX	160	131	18
10/23/2025	ABSDATA	119	101	15
	INDX	160	131	18
10/22/2025	ABSDATA	119	101	15
	INDX	160	131	18
10/21/2025	ABSDATA	119	101	15
	INDX	160	131	18
10/20/2025	ABSDATA	119	101	15
	INDX	160	131	18
10/19/2025	ABSDATA	119	101	15
	INDX	160	131	18

# Weekly SLA Customer Report

Customer NIX\_Production  
 Database ID 51



Database Tablespace NIX\_PRD\_ABSD01\_ABS1

Date	Tablespace Name	Filesize (Gb)	Usedsize (Gb)	Percentage free
10/25/2025	ABSDATA	384	345	10
	INDX	366	303	17
10/24/2025	ABSDATA	384	345	10
	INDX	366	303	17
10/23/2025	ABSDATA	384	345	10
	INDX	366	303	17
10/22/2025	ABSDATA	384	344	10
	INDX	366	303	17
10/21/2025	ABSDATA	384	344	10
	INDX	366	303	17
10/20/2025	ABSDATA	384	343	11
	INDX	366	303	17
10/19/2025	ABSDATA	384	343	11
	INDX	366	303	17

BI Status and last ETL error for NIX\_PRD\_ABSBI\_ABS1

	Mon 20/10/2025	Tue 21/10/2025	Wed 22/10/2025	Thu 23/10/2025	Fri 24/10/2025	Sat 25/10/2025
<b>ABS DataWarehouse ETL Health</b>	OK	OK	OK	OK	OK	OK
<b>ABS DWHStaging ETL Health</b>	OK	OK	OK	OK	OK	OK

## Weekly SLA Customer Report

Customer NIX\_Production  
Database ID 51



BI last ETL error for	NIX_PRD_ABSBI_ABS1
-----------------------	--------------------

Wed, 22-10-2025	None
Tue, 21-10-2025	None
Thu, 23-10-2025	None
Mon, 20-10-2025	None
Wed, 22-10-2025	None
Mon, 20-10-2025	None
Fri, 24-10-2025	None
Sun, 19-10-2025	None
Fri, 24-10-2025	None
Sun, 19-10-2025	None
Thu, 23-10-2025	None
Tue, 21-10-2025	None
Sat, 25-10-2025	None
Sat, 25-10-2025	None

# Weekly SLA Customer Report

Customer NIX\_Production  
Database ID 51



Standby Database Health NIX\_Production

### Recovery lag for last 7 days



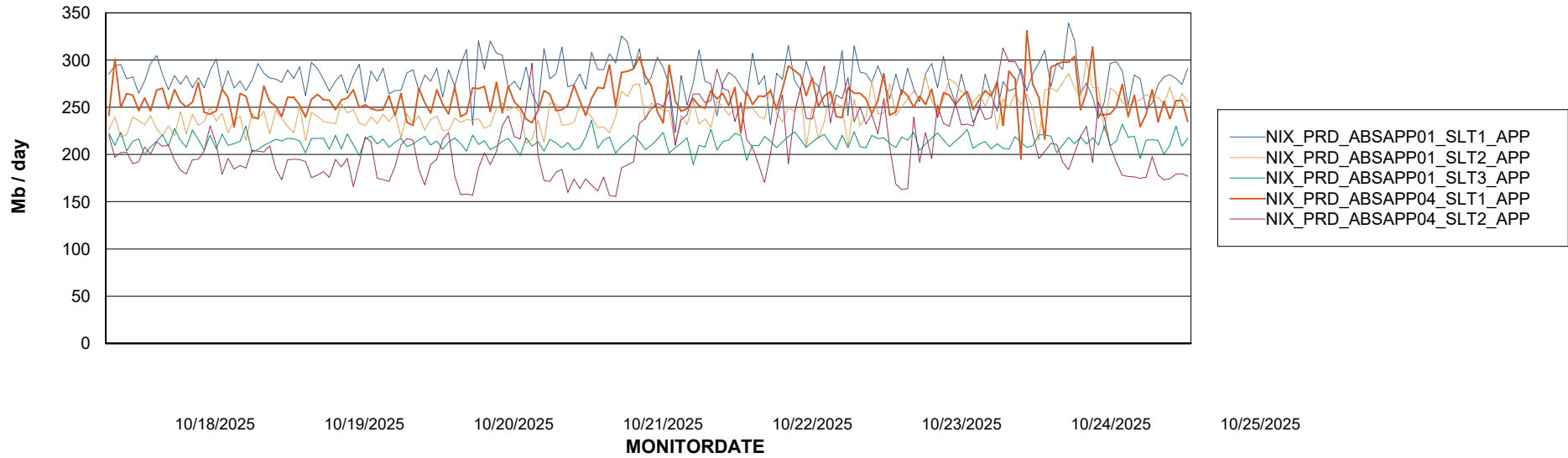
# Weekly SLA Customer Report

Customer NIX\_Production  
Database ID 51

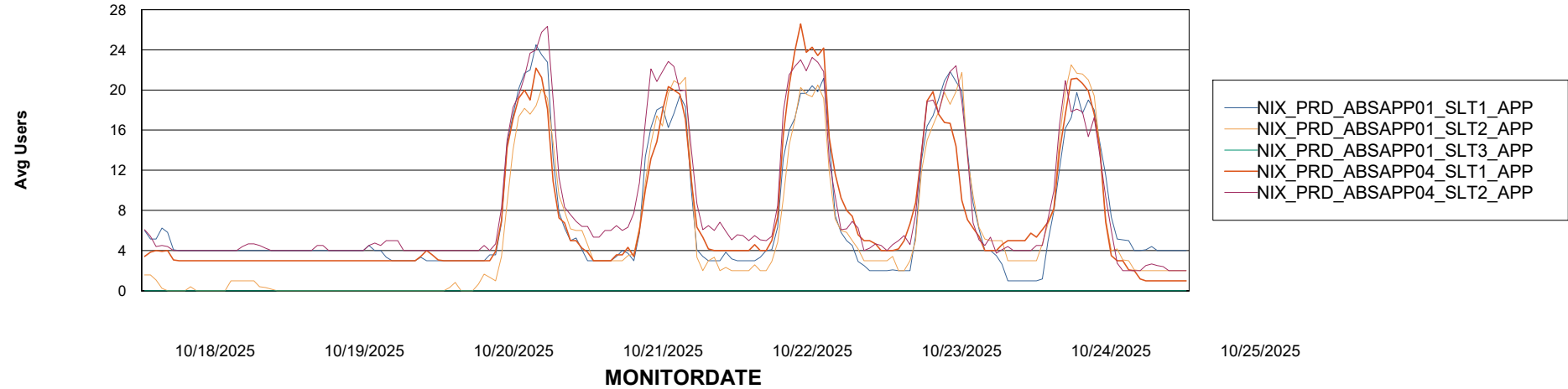


## ABSSolute Application Server Services

### Avg memory used per ABS Server Service



### Avg users per day per ABS server



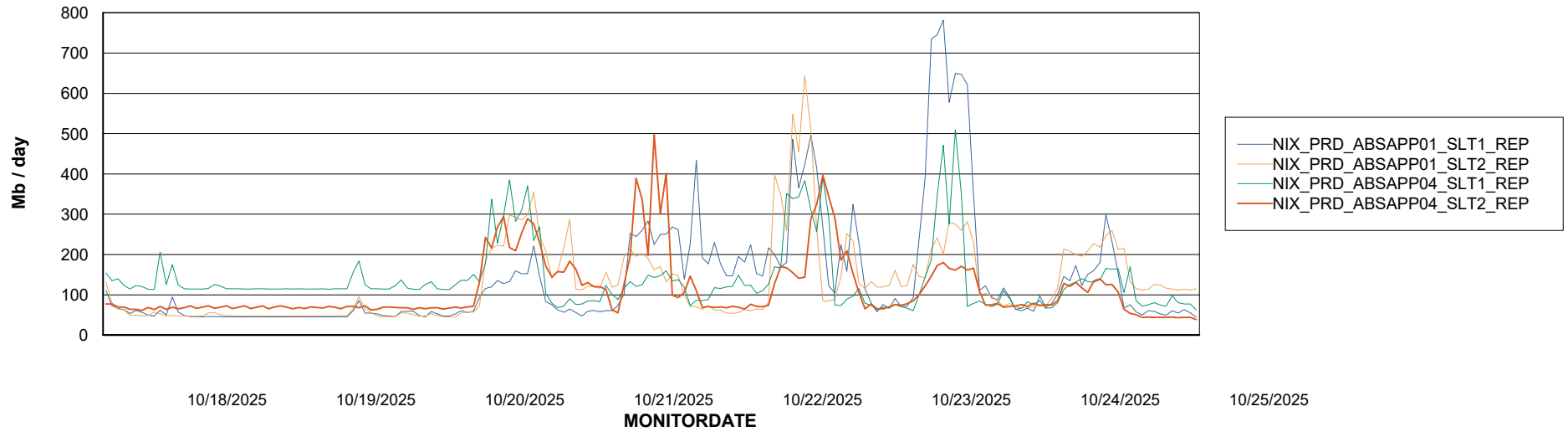
# Weekly SLA Customer Report

Customer NIX\_Production  
Database ID 51



## ABSSolute Application ReportServer Services

### Avg memory used per ReportServer Service



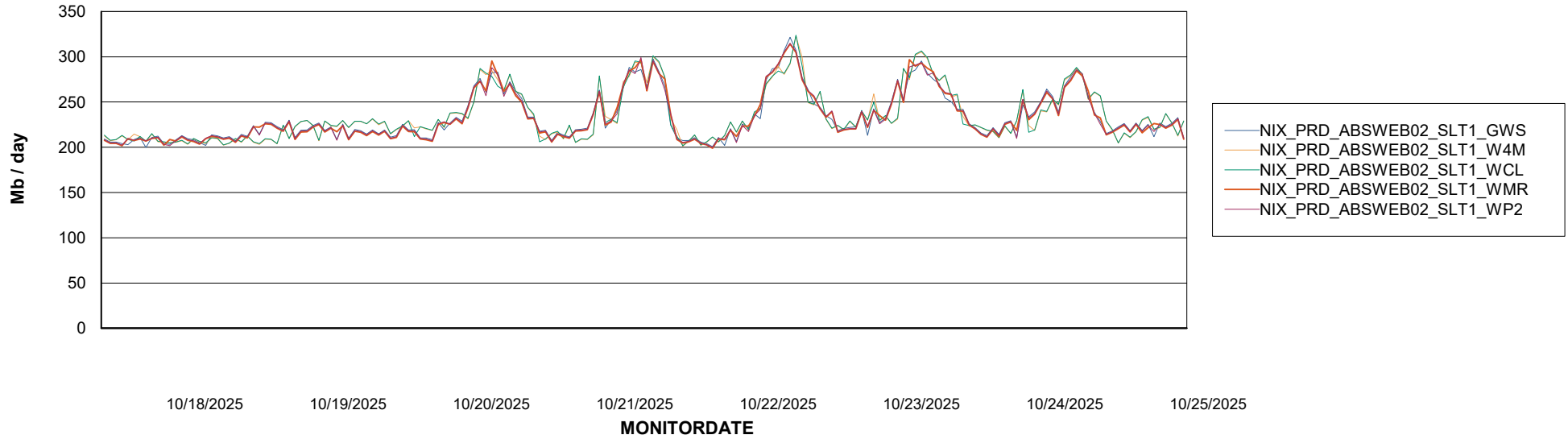
# Weekly SLA Customer Report

Customer NIX\_Production  
Database ID 51



## ABSSolute Web Component Services

### Avg memory used per ABS Web component



# Weekly SLA Customer Report

Customer NIX\_Production  
Database ID 51



### Disaster per ABS component

