

Weekly SLA Customer Report

Customer LSS_CHINA_Production
 Database ID 202



Harddisk Usage LSS_CHINA_PRD_LIAZCNABSAPPL1

	Free disk space on C: (%)	Total disk space on C: (Gb)	Used disk space on C: (Gb)	Free disk space on D: (%)	Total disk space on D: (Gb)	Used disk space on D: (Gb)
10/12/2025	27	127	92	73	64	17
10/11/2025	27	127	92	73	64	17
10/10/2025	27	127	92	73	64	17
10/9/2025	27	127	93	73	64	17
10/8/2025	26	127	93	73	64	17
10/7/2025	27	127	93	73	64	17
10/6/2025	26	127	93	73	64	17

Harddisk Usage LSS_CHINA_PRD_LIAZCNABSAPPL2

	Free disk space on C: (%)	Total disk space on C: (Gb)	Used disk space on C: (Gb)	Free disk space on D: (%)	Total disk space on D: (Gb)	Used disk space on D: (Gb)
10/12/2025	60	127	50	92	64	5
10/11/2025	60	127	50	92	64	5
10/10/2025	60	127	51	92	64	5
10/9/2025	59	127	52	92	64	5
10/8/2025	59	127	51	92	64	5
10/7/2025	59	127	51	92	64	5
10/6/2025	60	127	51	92	64	5

Weekly SLA Customer Report

Customer LSS_CHINA_Production
 Database ID 202



Harddisk Usage LSS_CHINA_PRD_liazcnVMPABSDB1

	Free disk space on C: (%)	Total disk space on C: (Gb)	Used disk space on C: (Gb)	Free disk space on D: (%)	Total disk space on D: (Gb)	Used disk space on D: (Gb)	Free disk space on E: (%)	Total disk space on E: (Gb)	Used disk space on E: (Gb)	Free disk space on F: (%)
10/12/2025	79	149	31	83	100	17	55	1,500	668	79
10/11/2025	79	149	31	83	100	17	55	1,500	668	78
10/10/2025	79	149	31	83	100	17	55	1,500	668	79
10/9/2025	79	149	31	83	100	17	55	1,500	668	78
10/8/2025	79	149	31	83	100	17	55	1,500	668	79
10/7/2025	79	149	31	83	100	17	55	1,500	668	79
10/6/2025	79	149	31	83	100	17	56	1,500	665	79

Harddisk Usage LSS_CHINA_PRD_liazcnVMPABSDB2

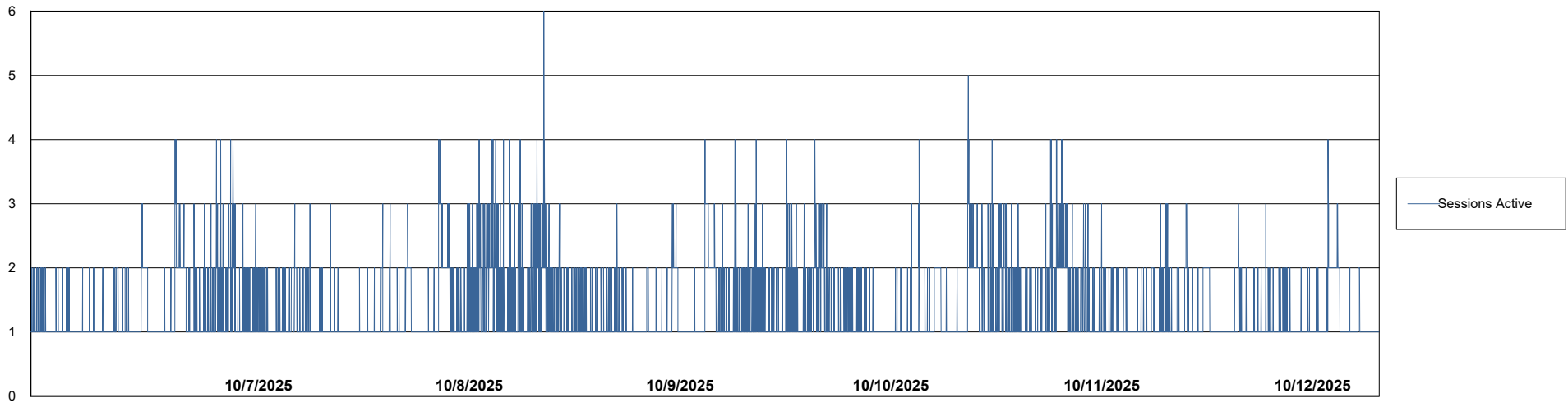
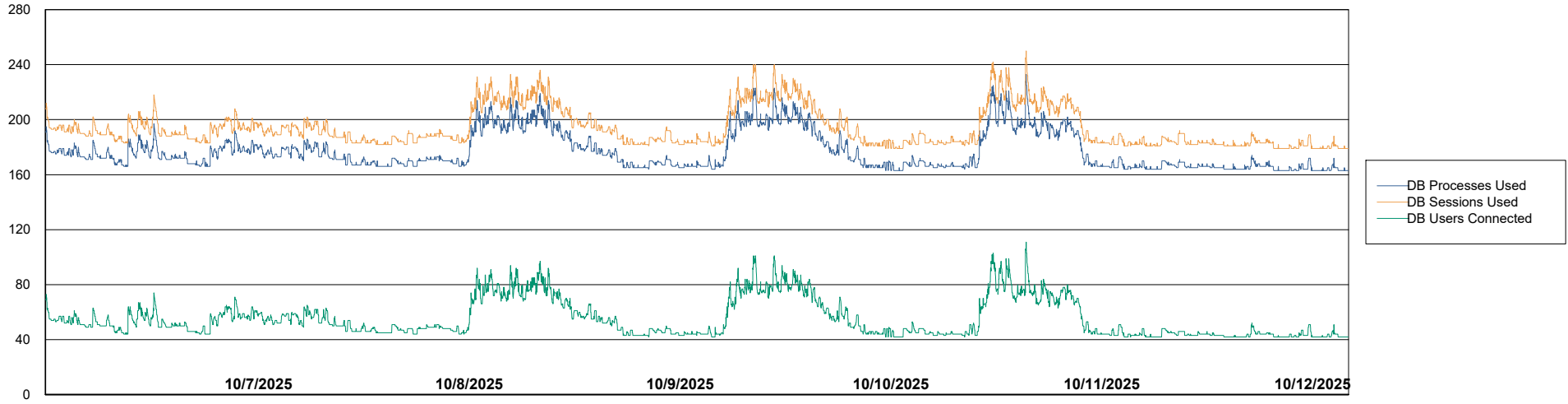
	Free disk space on C: (%)	Total disk space on C: (Gb)	Used disk space on C: (Gb)	Free disk space on D: (%)	Total disk space on D: (Gb)	Used disk space on D: (Gb)	Free disk space on E: (%)	Total disk space on E: (Gb)	Used disk space on E: (Gb)	Free disk space on F: (%)
10/12/2025	80	149	30	78	100	22	64	1,500	546	93
10/11/2025	80	149	30	78	100	22	64	1,500	546	93
10/10/2025	80	149	30	78	100	22	64	1,500	546	94
10/9/2025	80	149	30	78	100	22	64	1,500	546	93
10/8/2025	80	149	30	78	100	22	64	1,500	546	94
10/7/2025	80	149	30	78	100	22	64	1,500	546	94
10/6/2025	80	149	30	78	100	22	64	1,500	543	95

Weekly SLA Customer Report

Customer LSS_CHINA_Production
Database ID 202



Database Performance LSS_CHINA_PRD_liazcnVMPABSDB1_ABS1



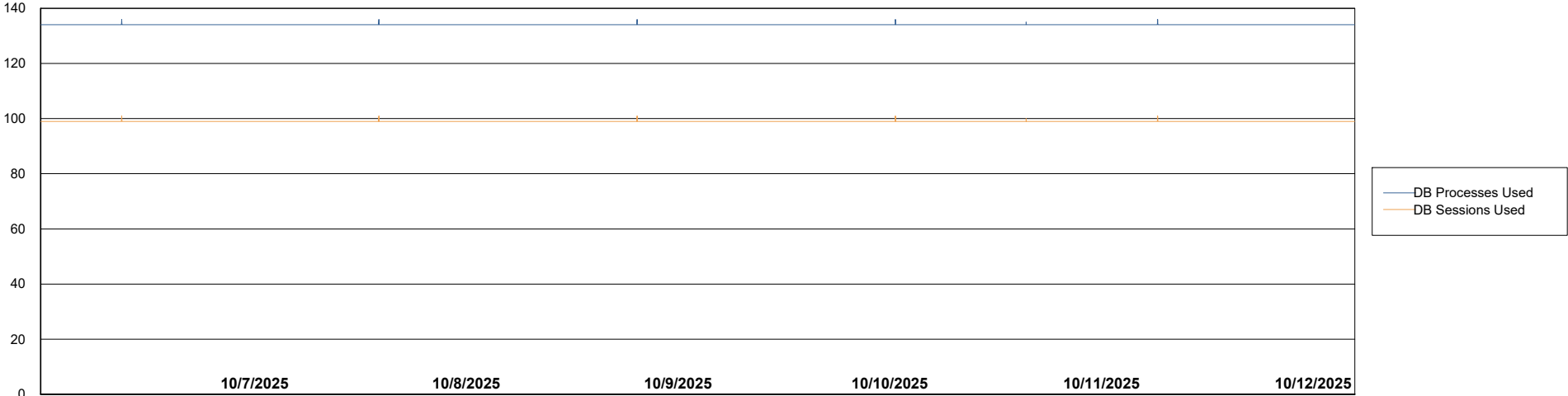
Weekly SLA Customer Report

Customer LSS_CHINA_Production
Database ID 202



Database Performance LSS_CHINA_PRD_liazcnVMPABSDB2_HSBABS1

DB Processes Max 4
DB Processes Max 0
DB Processes Max 1,000



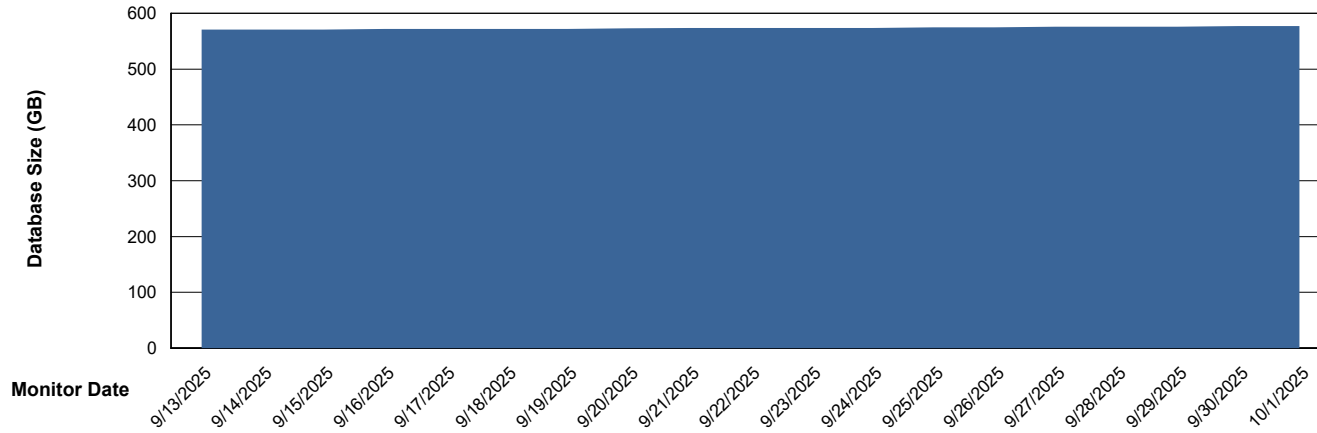
Weekly SLA Customer Report

Customer LSS_CHINA_Production
Database ID 202



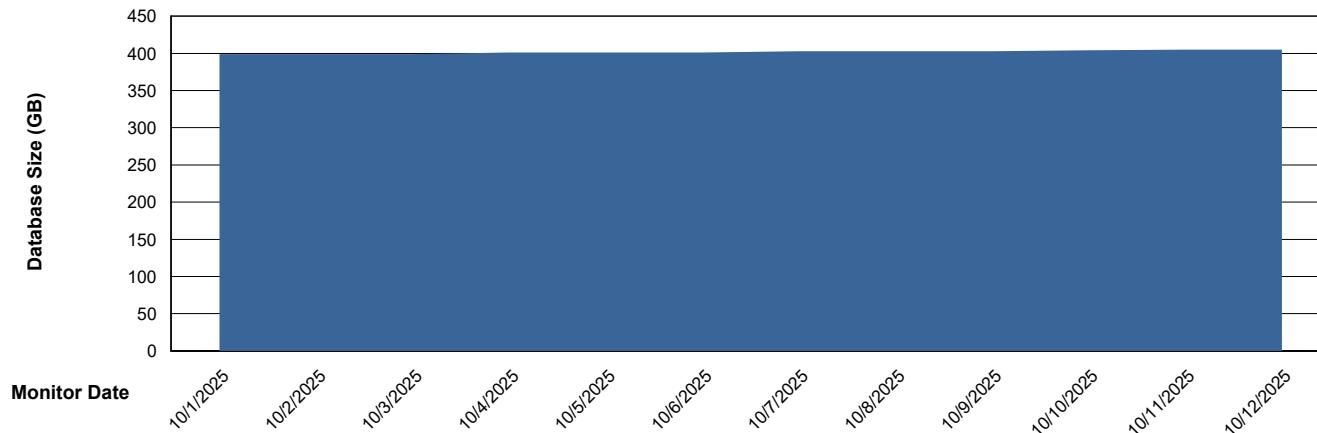
DATABASE SIZE LSS_CHINA_PRD_liazcne2VMProdABSSoluteDB1_ABS1

Database growth over last month



DATABASE SIZE LSS_CHINA_PRD_liazcnVMPABSDB1_ABS1

Database growth over last month



Weekly SLA Customer Report

Customer LSS_CHINA_Production
 Database ID 202

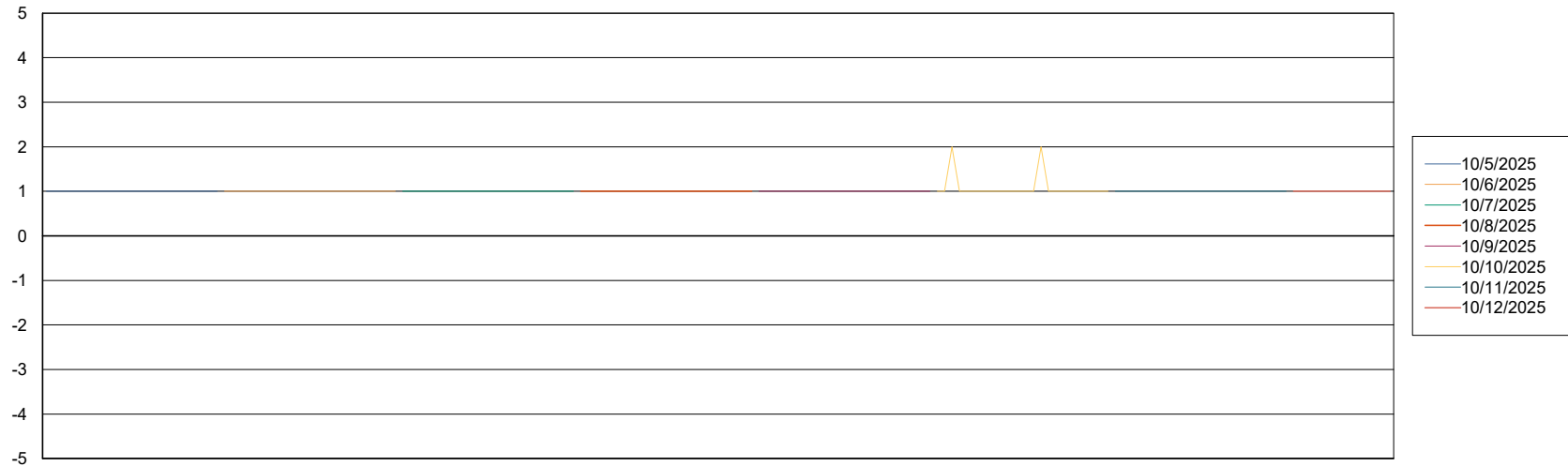


Database Tablespace LSS_CHINA_PRD_liazcnVMPABSDB1_ABS1

Date	Tablespace Name	Filesize (Gb)	Usedsize (Gb)	Percentage free
10/12/2025	ABSDATA	460	384	16
	INDX	50	17	66
10/11/2025	ABSDATA	460	384	16
	INDX	50	17	66
10/10/2025	ABSDATA	460	383	17
	INDX	50	17	66
10/9/2025	ABSDATA	460	383	17
	INDX	50	17	66
10/8/2025	ABSDATA	460	383	17
	INDX	50	17	66
10/7/2025	ABSDATA	460	383	17
	INDX	50	17	66
10/6/2025	ABSDATA	460	382	17
	INDX	50	17	66

Standby Database Health LSS_CHINA_Production

Recovery lag for last 7 days



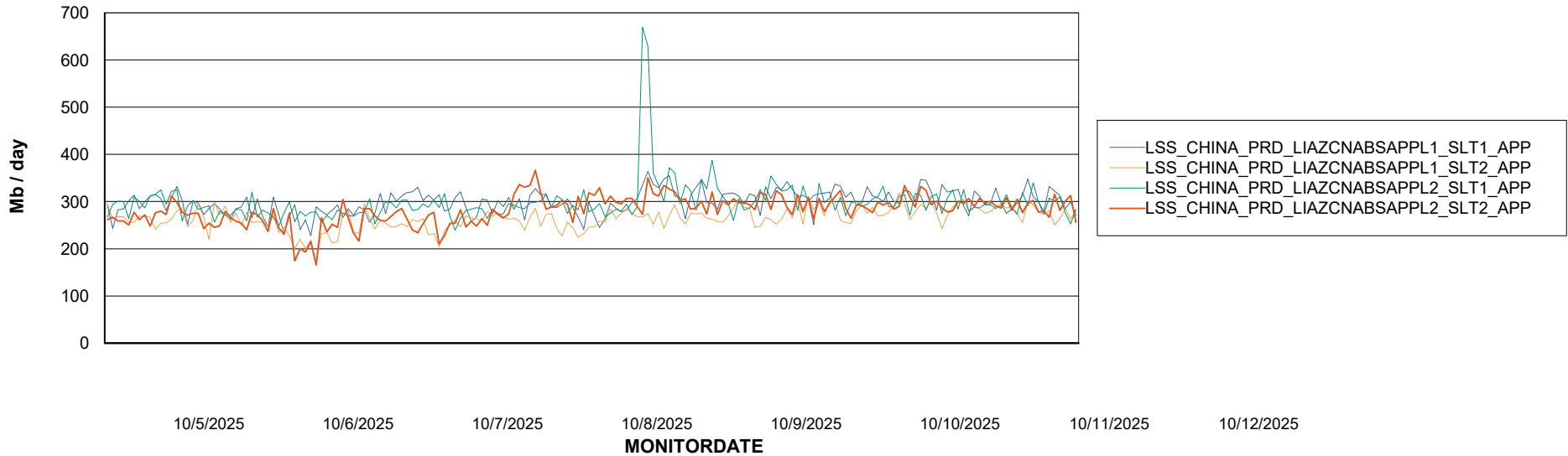
Weekly SLA Customer Report

Customer LSS_CHINA_Production
Database ID 202

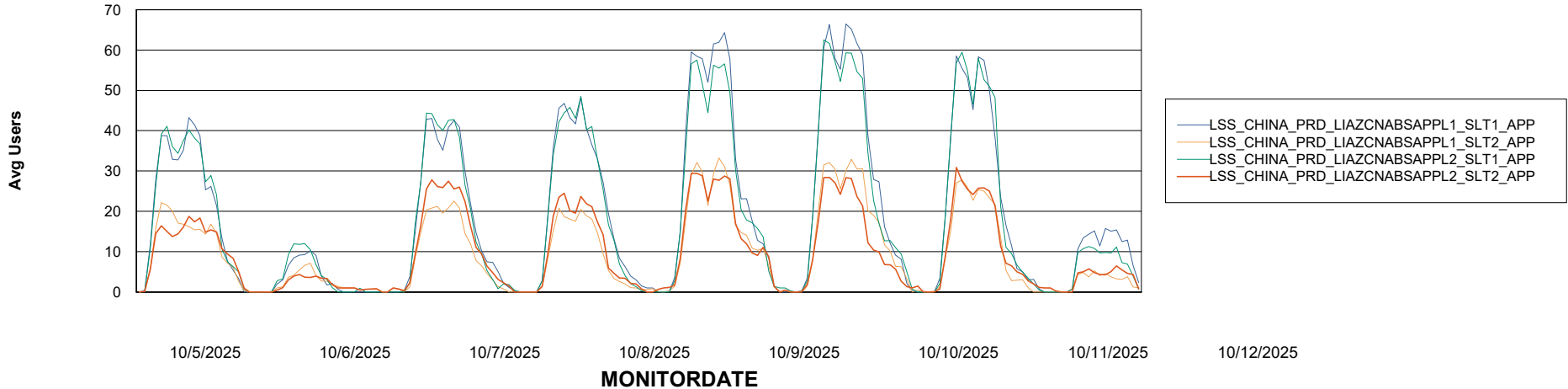


ABSSolute Application Server Services

Avg memory used per ABS Server Service



Avg users per day per ABS server



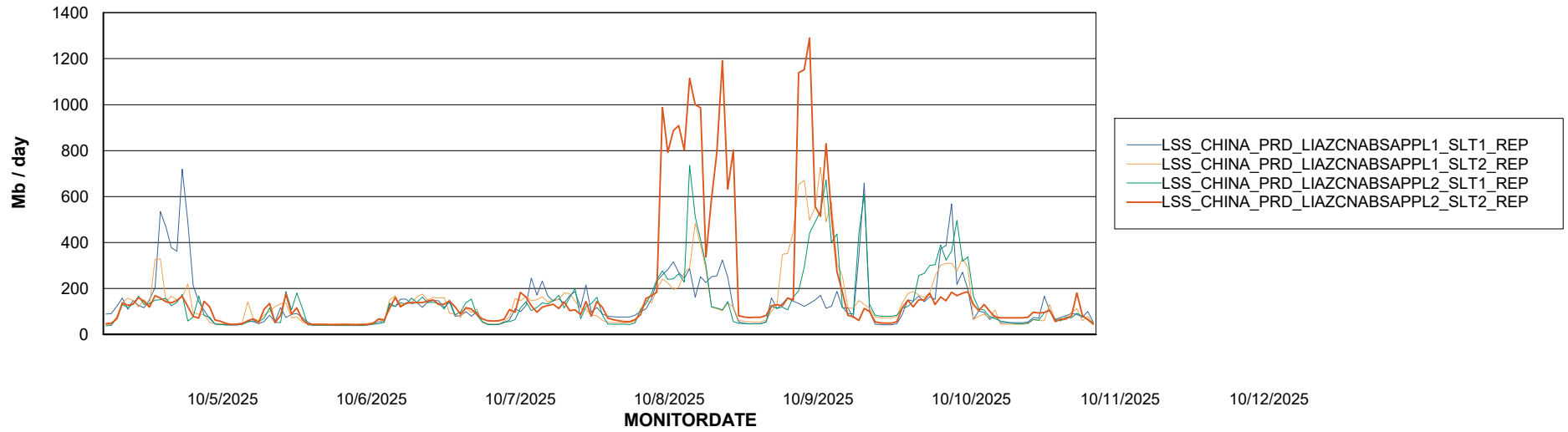
Weekly SLA Customer Report

Customer LSS_CHINA_Production
Database ID 202



ABSSolute Application ReportServer Services

Avg memory used per ReportServer Service



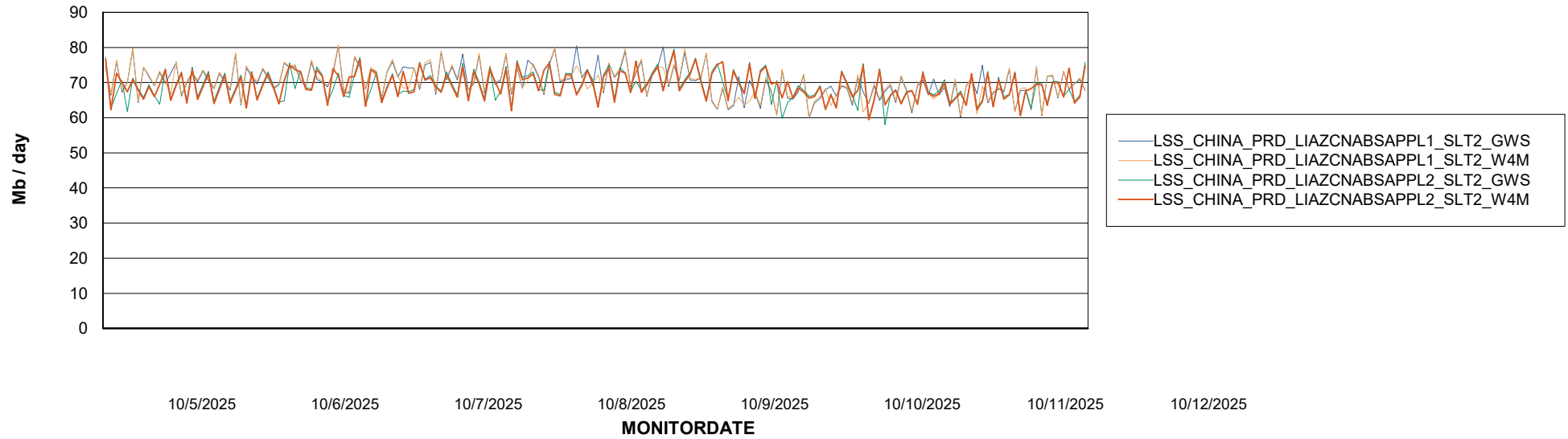
Weekly SLA Customer Report

Customer LSS_CHINA_Production
Database ID 202



ABSolute Web Component Services

Avg memory used per ABS Web component



Weekly SLA Customer Report

Customer LSS_CHINA_Production
Database ID 202



Disaster per ABS component

