

# Weekly SLA Customer Report

Customer LSS\_CHINA\_Production  
 Database ID 202



Harddisk Usage LSS\_CHINA\_PRD\_LIAZCNABSAPPL1

	Free disk space on C: (%)	Total disk space on C: (Gb)	Used disk space on C: (Gb)	Free disk space on D: (%)	Total disk space on D: (Gb)	Used disk space on D: (Gb)
3/8/2025	33	127	84	73	64	17
3/7/2025	33	127	84	73	64	17
3/6/2025	33	127	85	73	64	17
3/5/2025	33	127	85	73	64	17
3/4/2025	33	127	84	73	64	17
3/3/2025	33	127	84	73	64	17
3/2/2025	33	127	84	73	64	17

Harddisk Usage LSS\_CHINA\_PRD\_LIAZCNABSAPPL2

	Free disk space on C: (%)	Total disk space on C: (Gb)	Used disk space on C: (Gb)	Free disk space on D: (%)	Total disk space on D: (Gb)	Used disk space on D: (Gb)
3/8/2025	65	127	44	92	64	5
3/7/2025	65	127	44	92	64	5
3/6/2025	65	127	44	92	64	5
3/5/2025	65	127	44	92	64	5
3/4/2025	63	127	47	92	64	5
3/3/2025	63	127	47	92	64	5
3/2/2025	63	127	47	92	64	5

# Weekly SLA Customer Report

Customer LSS\_CHINA\_Production  
 Database ID 202



Harddisk Usage LSS\_CHINA\_PRD\_liazcne2VMProdABSSoluteDB1

	Free disk space on / (%)	Total disk space on / (Gb)	Used disk space on / (Gb)	Free disk space on /boot (%)	Total disk space on /boot (Gb)	Used disk space on /boot (Gb)	Free disk space on /u01 (%)	Total disk space on /u01 (Gb)	Used disk space on /u01 (Gb)	Free disk space on /u02 (%)
3/8/2025	75	63	16	69	0	0	49	49	24	31
3/7/2025	75	63	16	69	0	0	48	49	24	31
3/6/2025	75	63	16	69	0	0	48	49	24	31
3/5/2025	75	63	16	69	0	0	48	49	24	31
3/4/2025	75	63	16	69	0	0	48	49	24	31
3/3/2025	75	63	16	69	0	0	48	49	24	31
3/2/2025	75	63	16	69	0	0	48	49	24	31

Harddisk Usage LSS\_CHINA\_PRD\_liazcne2VMProdABSSoluteDB2

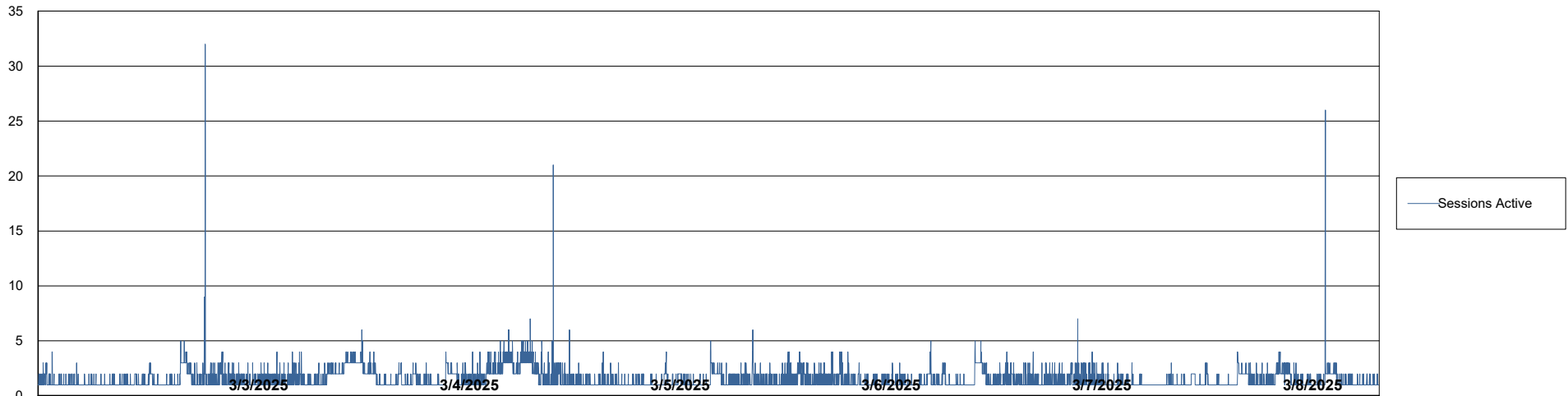
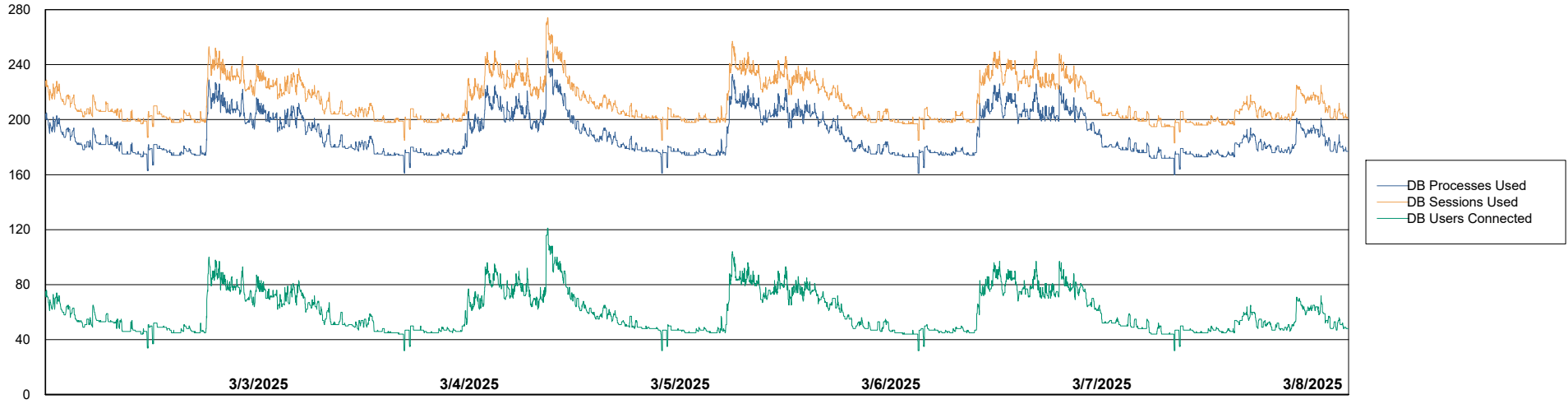
	Free disk space on / (%)	Total disk space on / (Gb)	Used disk space on / (Gb)	Free disk space on /boot (%)	Total disk space on /boot (Gb)	Used disk space on /boot (Gb)	Free disk space on /u01 (%)	Total disk space on /u01 (Gb)	Used disk space on /u01 (Gb)	Free disk space on /u02 (%)
3/8/2025	88	63	8	69	0	0	57	49	20	34
3/7/2025	88	63	8	69	0	0	57	49	20	34
3/6/2025	88	63	8	69	0	0	57	49	20	34
3/5/2025	88	63	8	69	0	0	57	49	20	34
3/4/2025	88	63	8	69	0	0	57	49	20	34
3/3/2025	88	63	8	69	0	0	57	49	20	34
3/2/2025	88	63	8	69	0	0	57	49	20	34

# Weekly SLA Customer Report

Customer LSS\_CHINA\_Production  
Database ID 202



## Database Performance LSS\_CHINA\_PRD\_liazcne2VMPProdABSSoluteDB1\_ABS1



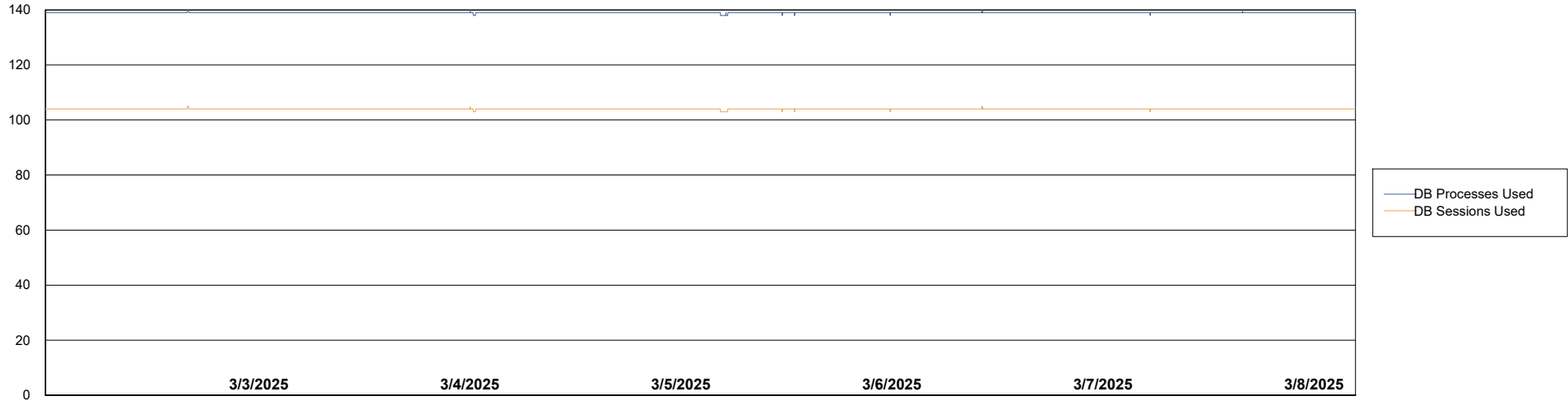
# Weekly SLA Customer Report

Customer LSS\_CHINA\_Production  
Database ID 202



Database Performance LSS\_CHINA\_PRD\_liazcne2VMProdABSSoluteDB2\_HSBABS1

DB Processes Max 0  
DB Processes Max 1,000  
DB Processes Max 4



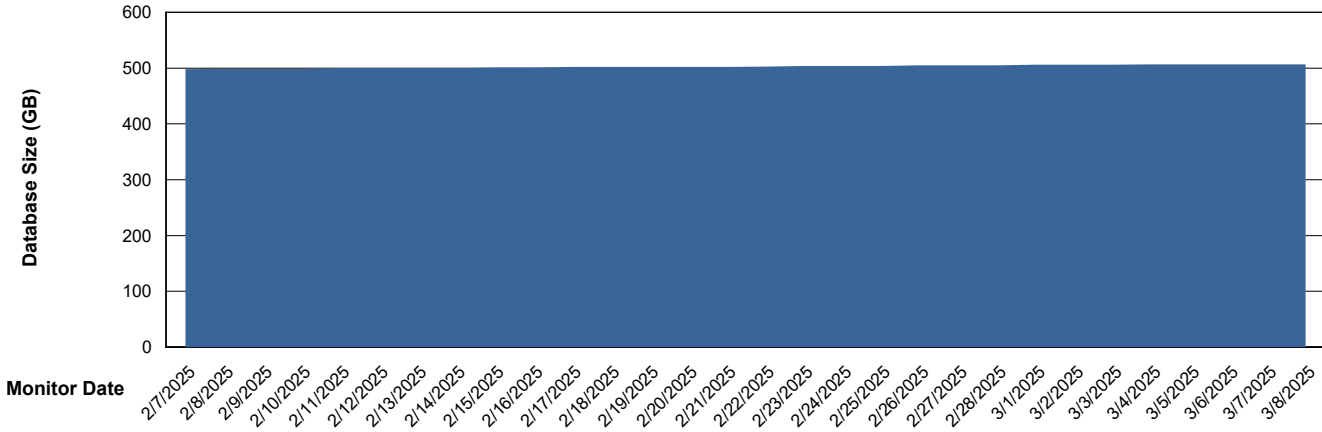
# Weekly SLA Customer Report

Customer LSS\_CHINA\_Production  
 Database ID 202



DATABASE SIZE LSS\_CHINA\_PRD\_liazcne2VMProdABSSoluteDB1\_ABS1

## Database growth over last month



Database Tablespace LSS\_CHINA\_PRD\_liazcne2VMProdABSSoluteDB1\_ABS1

Date	Tablespace Name	Filesize (Gb)	Usedsize (Gb)	Percentage free
3/8/2025	ABSDATA	544	452	17
	INDX	42	33	21
3/7/2025	ABSDATA	544	452	17
	INDX	42	33	21
3/6/2025	ABSDATA	544	452	17
	INDX	42	33	22
3/5/2025	ABSDATA	544	451	17
	INDX	42	33	22
3/4/2025	ABSDATA	544	451	17
	INDX	42	33	22
3/3/2025	ABSDATA	544	451	17
	INDX	42	33	22
3/2/2025	ABSDATA	544	451	17
	INDX	42	33	22

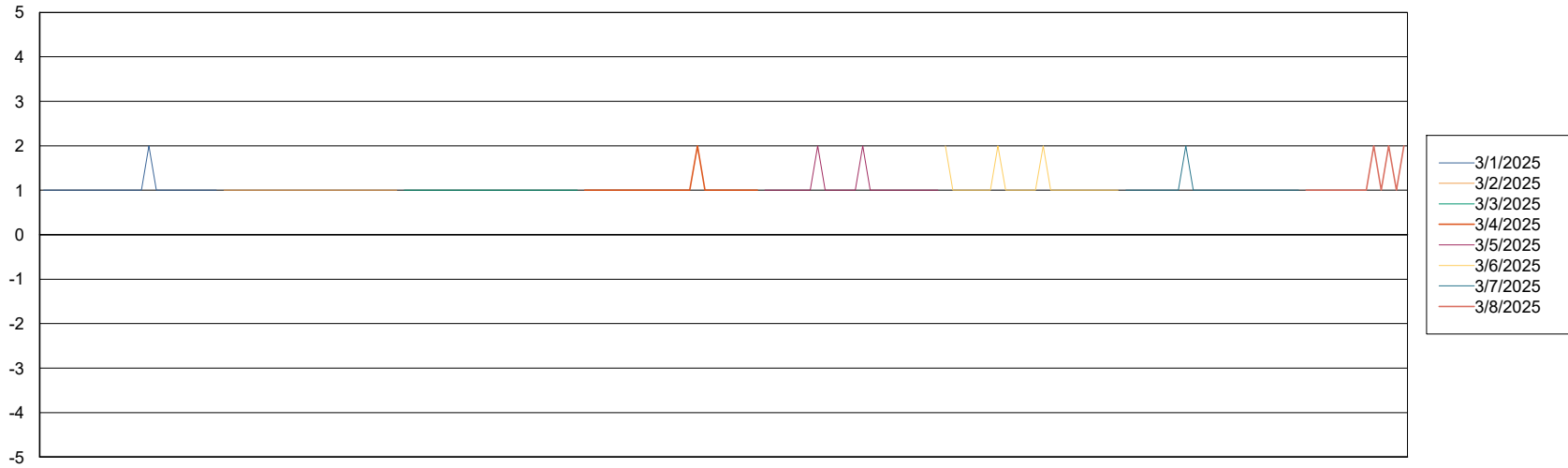
# Weekly SLA Customer Report

Customer LSS\_CHINA\_Production  
Database ID 202



Standby Database Health LSS\_CHINA\_Production

### Recovery lag for last 7 days



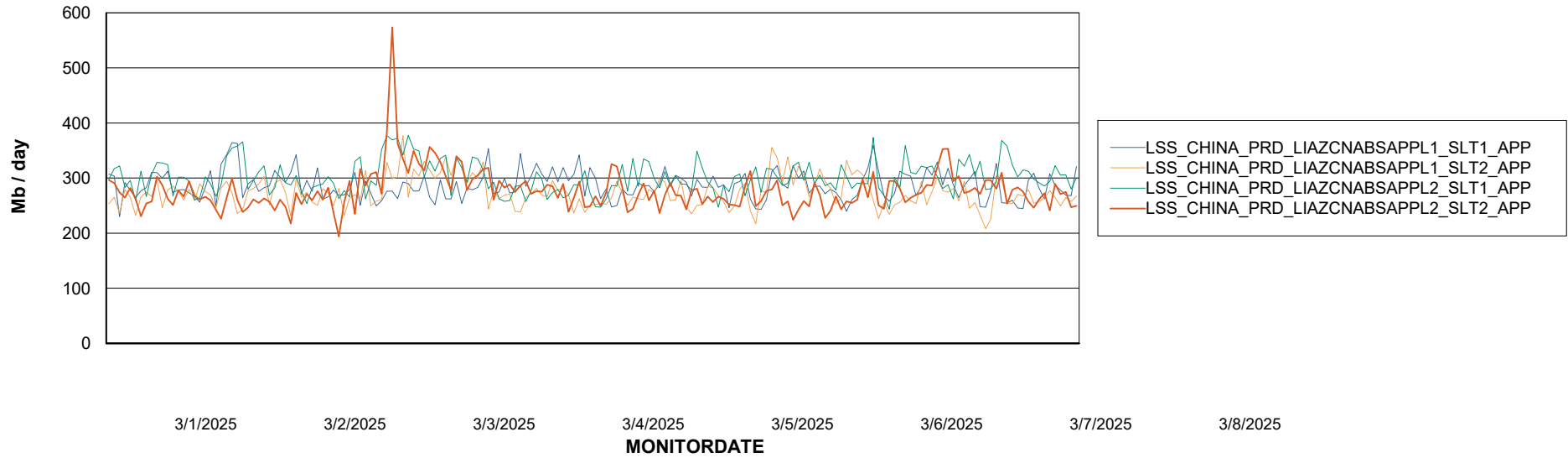
# Weekly SLA Customer Report

Customer LSS\_CHINA\_Production  
Database ID 202

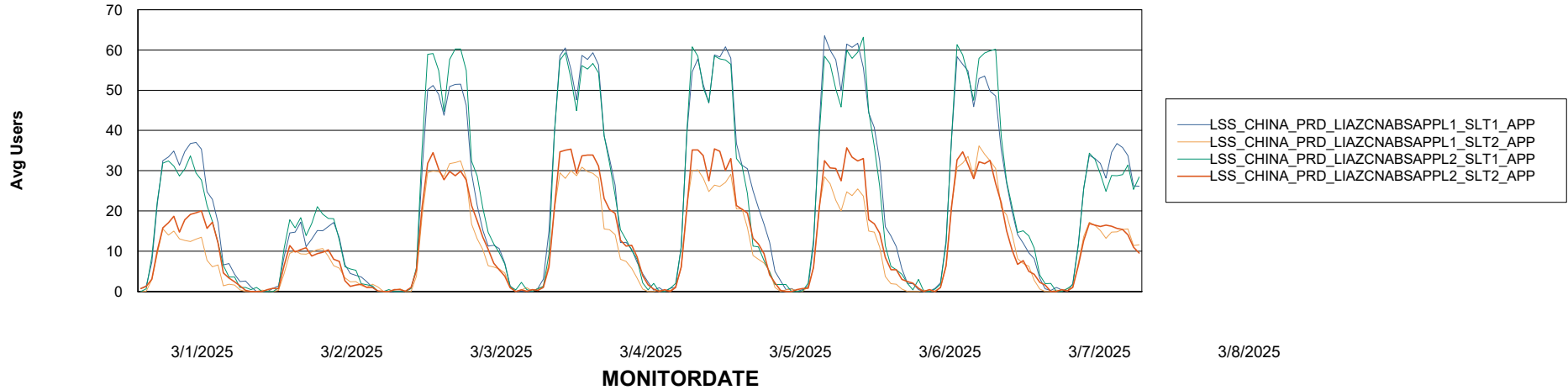


## ABSSolute Application Server Services

### Avg memory used per ABS Server Service



### Avg users per day per ABS server



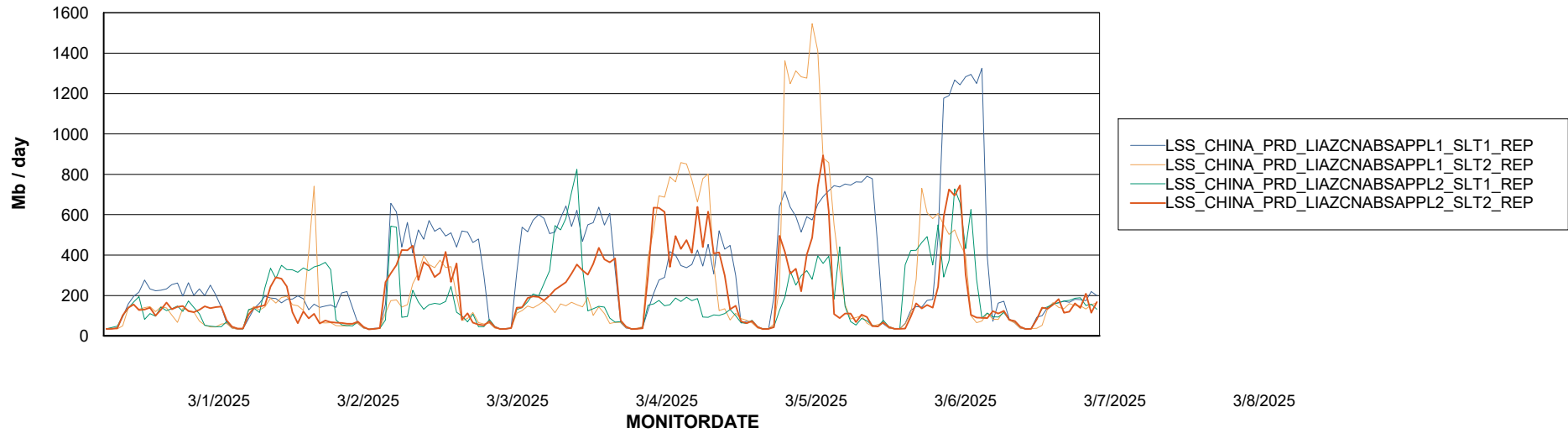
# Weekly SLA Customer Report

Customer LSS\_CHINA\_Production  
Database ID 202



## ABSSolute Application ReportServer Services

### Avg memory used per ReportServer Service



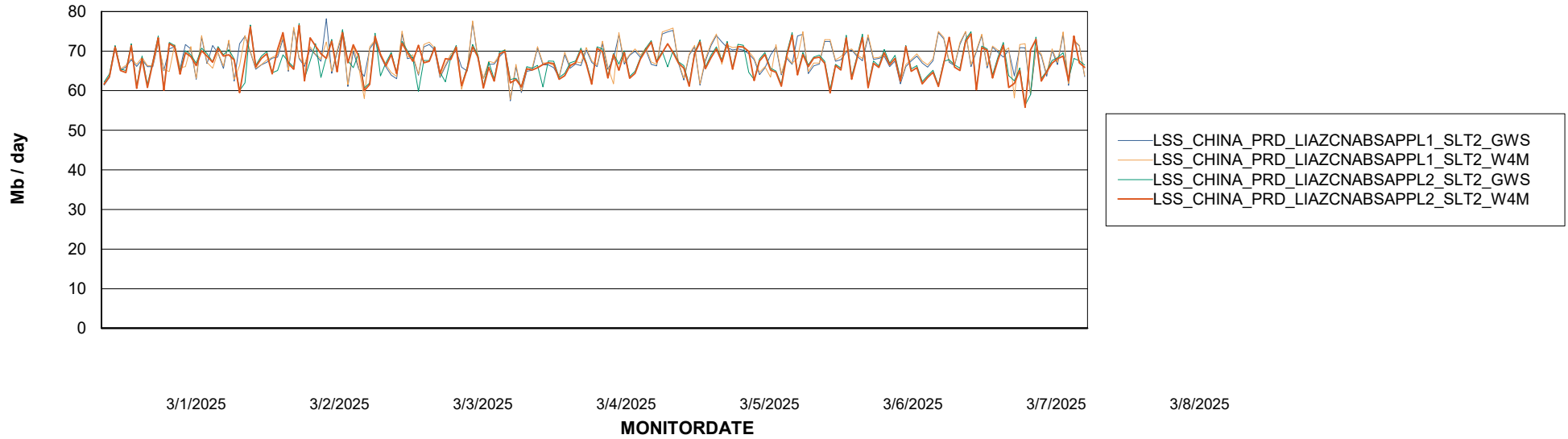
# Weekly SLA Customer Report

Customer LSS\_CHINA\_Production  
Database ID 202



## ABSSolute Web Component Services

### Avg memory used per ABS Web component

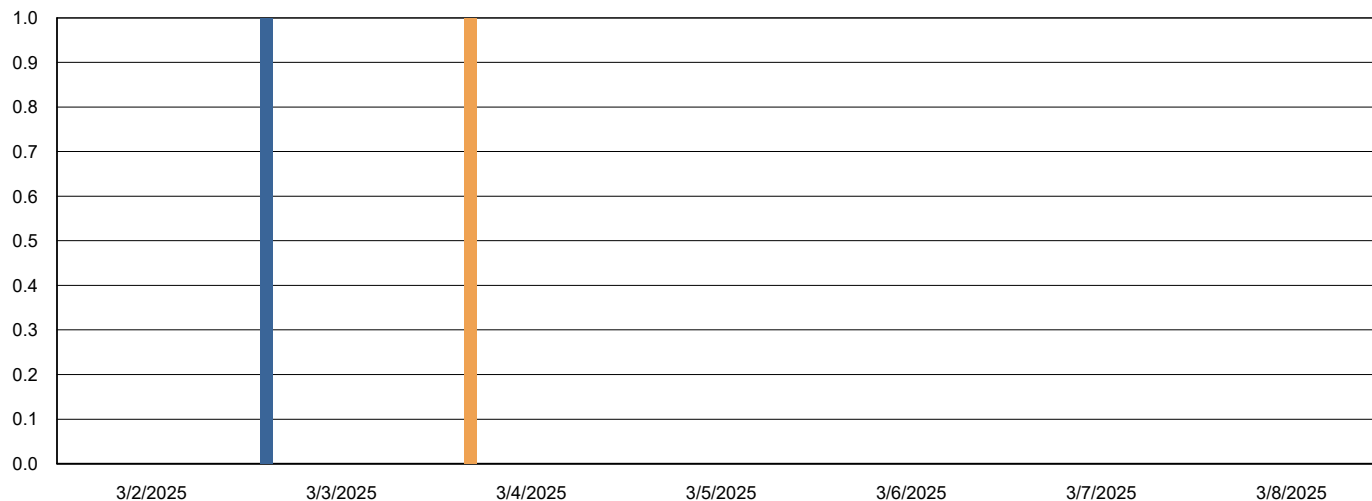


# Weekly SLA Customer Report

Customer LSS\_CHINA\_Production  
Database ID 202



## Disaster per ABS component



- LSS\_CHINA\_PRD\_LIAZCNABSAPPL1\_SLT1\_APP
- LSS\_CHINA\_PRD\_LIAZCNABSAPPL1\_SLT1\_REP
- LSS\_CHINA\_PRD\_LIAZCNABSAPPL1\_SLT2\_APP
- LSS\_CHINA\_PRD\_LIAZCNABSAPPL1\_SLT2\_GWS
- LSS\_CHINA\_PRD\_LIAZCNABSAPPL1\_SLT2\_REP
- LSS\_CHINA\_PRD\_LIAZCNABSAPPL1\_SLT2\_W4M
- LSS\_CHINA\_PRD\_LIAZCNABSAPPL2\_SLT1\_APP
- LSS\_CHINA\_PRD\_LIAZCNABSAPPL2\_SLT1\_REP
- LSS\_CHINA\_PRD\_LIAZCNABSAPPL2\_SLT2\_APP
- LSS\_CHINA\_PRD\_LIAZCNABSAPPL2\_SLT2\_GWS
- LSS\_CHINA\_PRD\_LIAZCNABSAPPL2\_SLT2\_REP
- LSS\_CHINA\_PRD\_LIAZCNABSAPPL2\_SLT2\_W4M