

Weekly SLA Customer Report

Customer LSS_CHINA_Production
 Database ID 202



Harddisk Usage LSS_CHINA_PRD_LIAZCNABSAPPL1

	Free disk space on C: (%)	Total disk space on C: (Gb)	Used disk space on C: (Gb)	Free disk space on D: (%)	Total disk space on D: (Gb)	Used disk space on D: (Gb)
2/22/2025	32	127	86	73	64	17
2/21/2025	32	127	86	73	64	17
2/20/2025	32	127	86	73	64	17
2/19/2025	32	127	86	73	64	17
2/18/2025	32	127	86	73	64	17
2/17/2025	32	127	86	73	64	17
2/16/2025	32	127	86	73	64	17

Harddisk Usage LSS_CHINA_PRD_LIAZCNABSAPPL2

	Free disk space on C: (%)	Total disk space on C: (Gb)	Used disk space on C: (Gb)	Free disk space on D: (%)	Total disk space on D: (Gb)	Used disk space on D: (Gb)
2/22/2025	65	127	45	92	64	5
2/21/2025	64	127	45	92	64	5
2/20/2025	64	127	45	92	64	5
2/19/2025	64	127	45	92	64	5
2/18/2025	64	127	45	92	64	5
2/17/2025	64	127	45	92	64	5
2/16/2025	64	127	45	92	64	5

Weekly SLA Customer Report

Customer LSS_CHINA_Production
Database ID 202



Harddisk Usage LSS_CHINA_PRD_liazcne2VMProdABSSoluteDB1

	Free disk space on / (%)	Total disk space on / (Gb)	Used disk space on / (Gb)	Free disk space on /boot (%)	Total disk space on /boot (Gb)	Used disk space on /boot (Gb)	Free disk space on /u01 (%)	Total disk space on /u01 (Gb)	Used disk space on /u01 (Gb)	Free disk space on /u02 (%)
2/22/2025	75	63	16	69	0	0	49	49	24	32
2/21/2025	75	63	16	69	0	0	49	49	24	32
2/20/2025	75	63	16	69	0	0	49	49	24	32
2/19/2025	75	63	16	69	0	0	49	49	24	32
2/18/2025	75	63	16	69	0	0	49	49	24	32
2/17/2025	75	63	16	69	0	0	49	49	24	32
2/16/2025	75	63	16	69	0	0	49	49	24	32

Harddisk Usage LSS_CHINA_PRD_liazcne2VMProdABSSoluteDB2

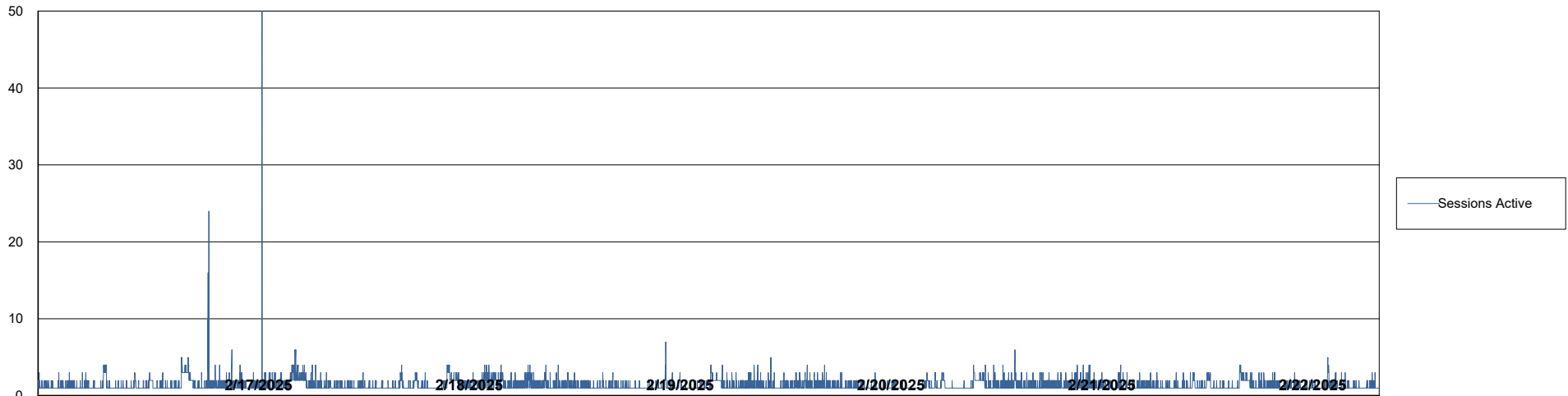
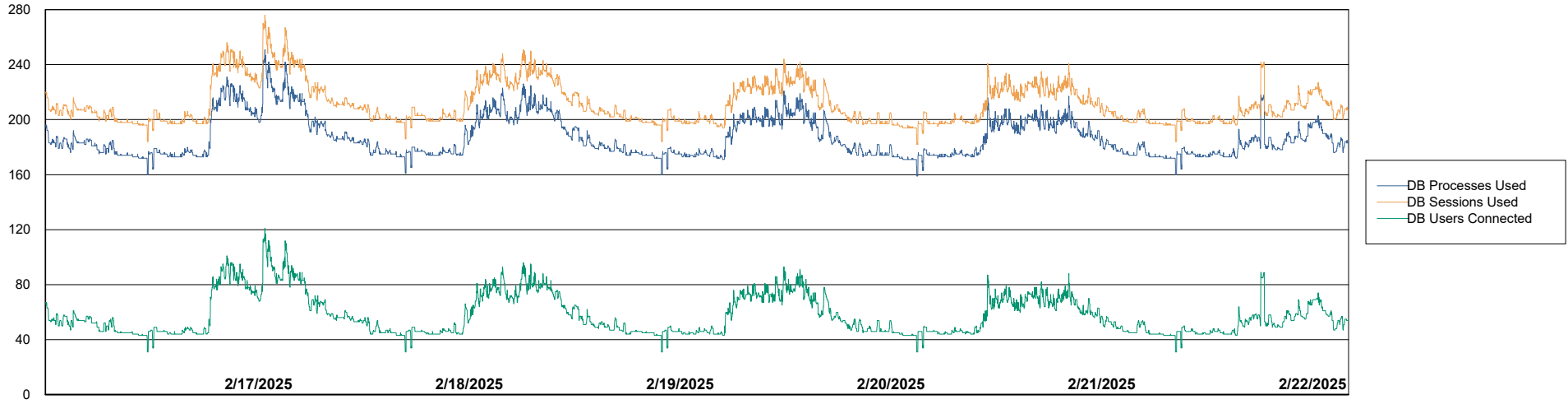
	Free disk space on / (%)	Total disk space on / (Gb)	Used disk space on / (Gb)	Free disk space on /boot (%)	Total disk space on /boot (Gb)	Used disk space on /boot (Gb)	Free disk space on /u01 (%)	Total disk space on /u01 (Gb)	Used disk space on /u01 (Gb)	Free disk space on /u02 (%)
2/22/2025	88	63	8	69	0	0	57	49	20	35
2/21/2025	88	63	8	69	0	0	57	49	20	35
2/20/2025	88	63	8	69	0	0	57	49	20	35
2/19/2025	88	63	8	69	0	0	57	49	20	35
2/18/2025	88	63	8	69	0	0	57	49	20	35
2/17/2025	88	63	8	69	0	0	57	49	20	35
2/16/2025	88	63	8	69	0	0	57	49	20	35

Weekly SLA Customer Report

Customer LSS_CHINA_Production
Database ID 202



Database Performance LSS_CHINA_PRD_liazcne2VMProdABSSoluteDB1_ABS1



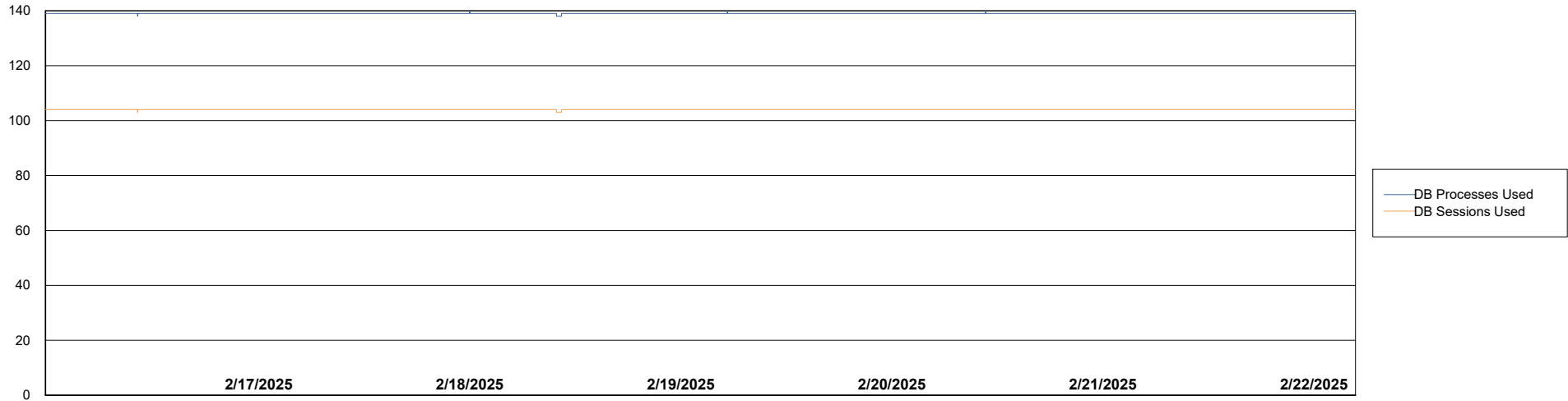
Weekly SLA Customer Report

Customer LSS_CHINA_Production
Database ID 202



Database Performance LSS_CHINA_PRD_liazcne2VMProdABSSoluteDB2_HSBABS1

DB Processes Max 0
DB Processes Max 1,000
DB Processes Max 4



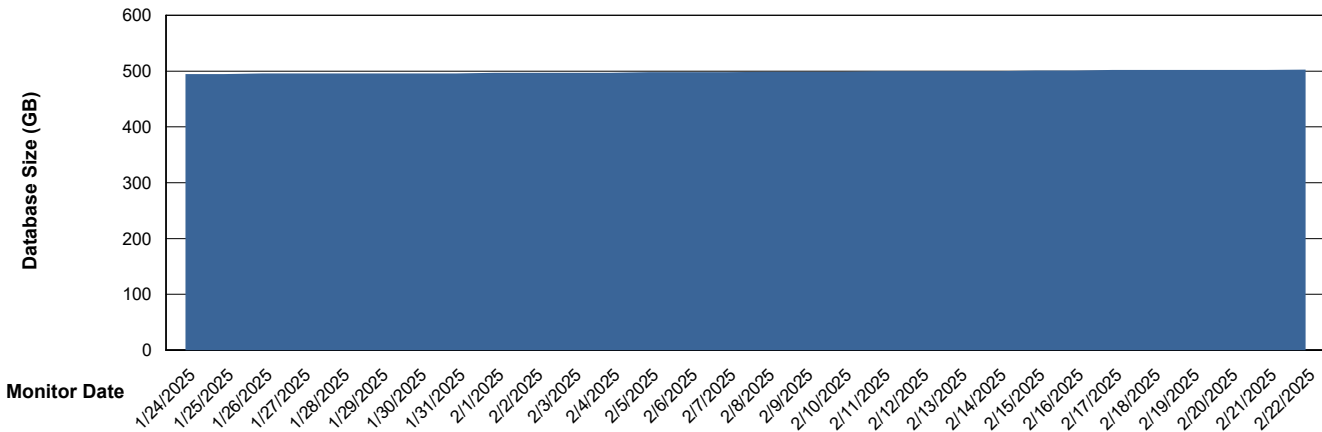
Weekly SLA Customer Report

Customer LSS_CHINA_Production
 Database ID 202



DATABASE SIZE LSS_CHINA_PRD_liazcne2VMProdABSSoluteDB1_ABS1

Database growth over last month



Database Tablespace LSS_CHINA_PRD_liazcne2VMProdABSSoluteDB1_ABS1

Date	Tablespace Name	Filesize (Gb)	Usedsize (Gb)	Percentage free
2/22/2025	ABSDATA	534	447	16
	INDX	42	33	22
2/21/2025	ABSDATA	534	447	16
	INDX	42	33	22
2/20/2025	ABSDATA	534	447	16
	INDX	42	33	22
2/19/2025	ABSDATA	534	447	16
	INDX	42	33	22
2/18/2025	ABSDATA	534	446	16
	INDX	42	33	22
2/17/2025	ABSDATA	534	446	16
	INDX	42	33	22
2/16/2025	ABSDATA	534	446	16
	INDX	42	33	22

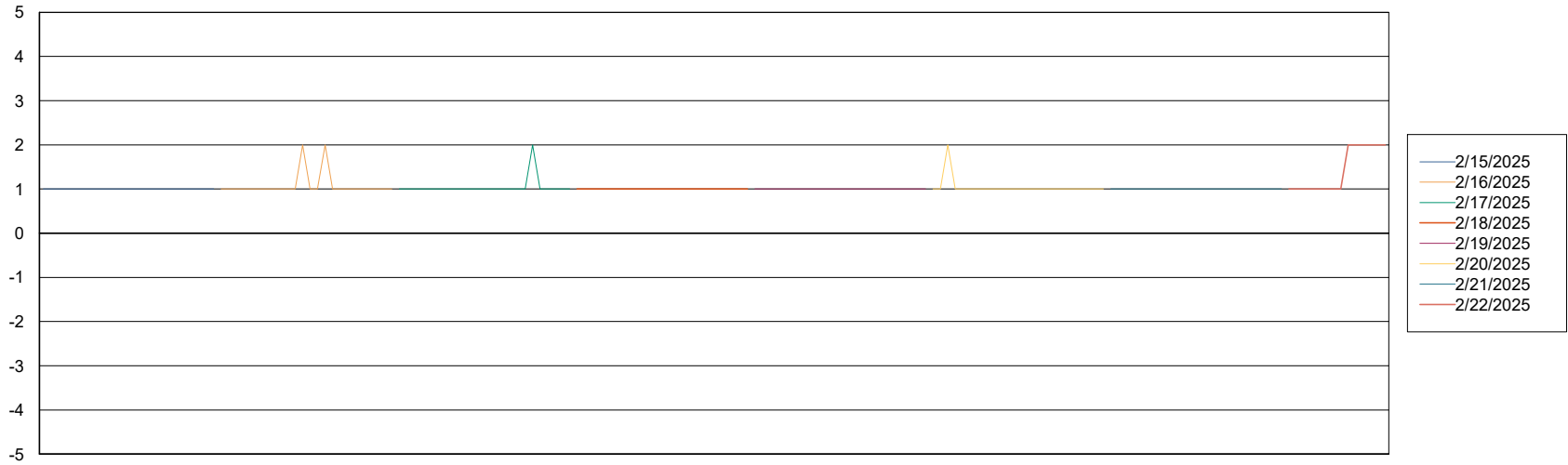
Weekly SLA Customer Report

Customer LSS_CHINA_Production
Database ID 202



Standby Database Health LSS_CHINA_Production

Recovery lag for last 7 days



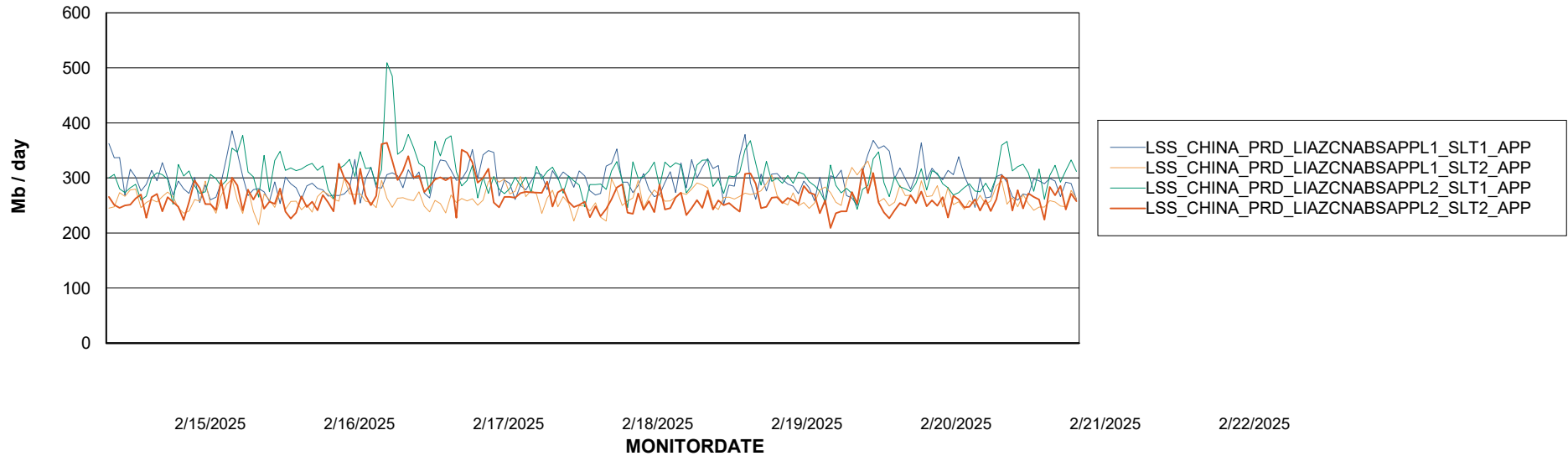
Weekly SLA Customer Report

Customer LSS_CHINA_Production
Database ID 202

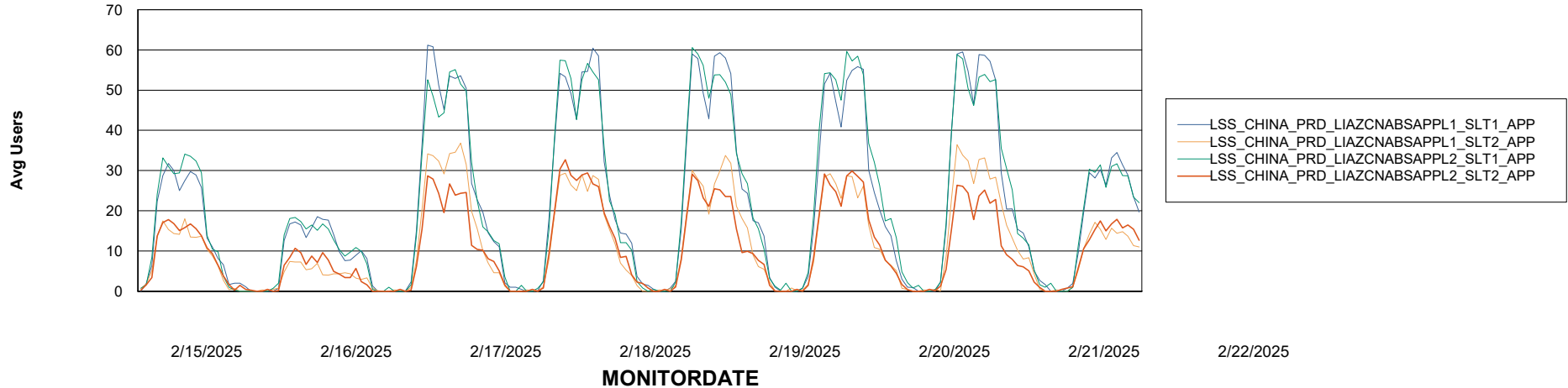


ABSSolute Application Server Services

Avg memory used per ABS Server Service



Avg users per day per ABS server



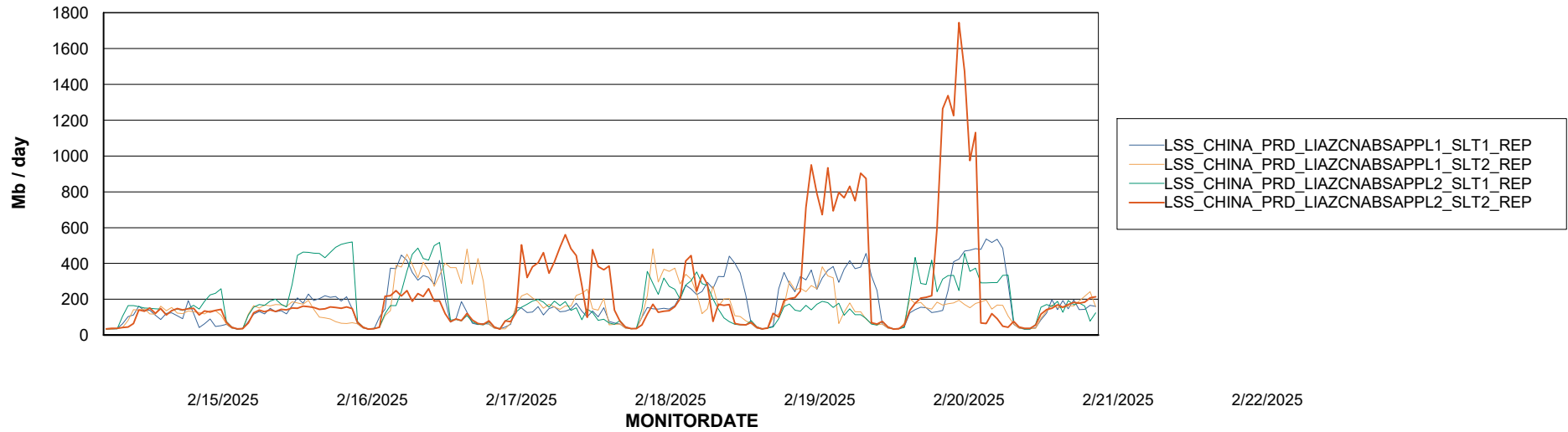
Weekly SLA Customer Report

Customer LSS_CHINA_Production
Database ID 202



ABSSolute Application ReportServer Services

Avg memory used per ReportServer Service



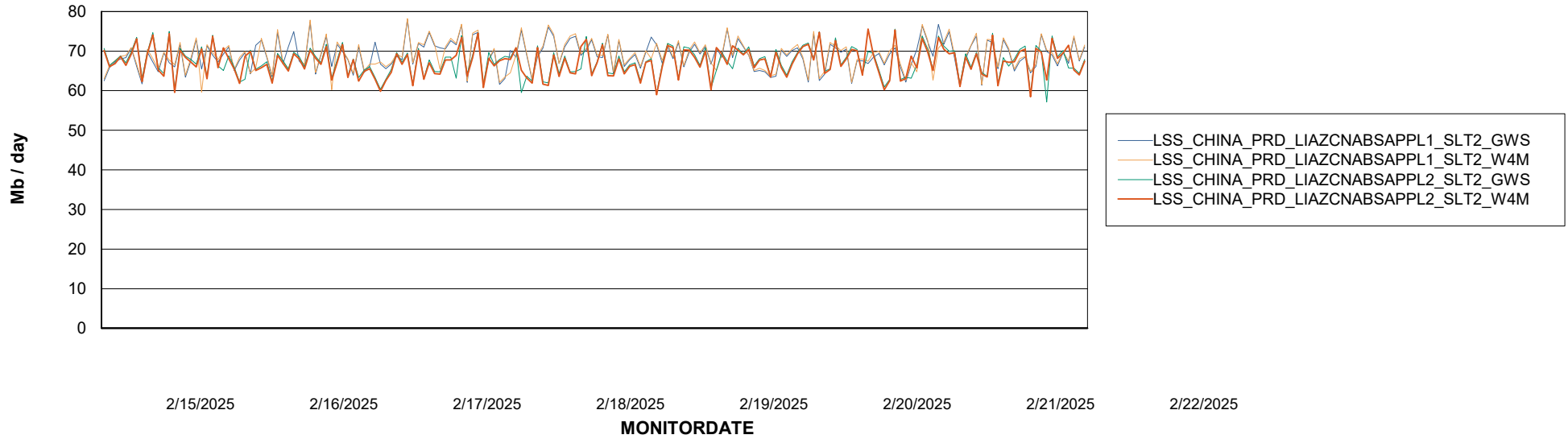
Weekly SLA Customer Report

Customer LSS_CHINA_Production
Database ID 202



ABSolute Web Component Services

Avg memory used per ABS Web component



Weekly SLA Customer Report

Customer LSS_CHINA_Production
Database ID 202



Disaster per ABS component

