

# Weekly SLA Customer Report

Customer JSG\_Production (24/7)  
Database ID 102



## Harddisk Usage JSG\_PRD\_BASHIR

	Free disk space on C: (%)	Total disk space on C: (Gb)	Used disk space on C: (Gb)	Free disk space on D: (%)	Total disk space on D: (Gb)	Used disk space on D: (Gb)
2/8/2025	30	149	105	20	900	721
2/7/2025	30	149	105	21	900	711
2/6/2025	29	149	106	21	900	711
2/5/2025	27	149	108	20	900	720
2/4/2025	28	149	108	20	900	720
2/3/2025	28	149	108	19	900	727
2/2/2025	28	149	107	19	900	732

## Harddisk Usage JSG\_PRD\_CRUSHER

	Free disk space on C: (%)	Total disk space on C: (Gb)	Used disk space on C: (Gb)
2/8/2025	47	89	47
2/7/2025	47	89	47
2/6/2025	47	89	47
2/5/2025	47	89	47
2/4/2025	47	89	47
2/3/2025	47	89	47
2/2/2025	47	89	47

# Weekly SLA Customer Report

Customer JSG\_Production (24/7)  
Database ID 102



## Harddisk Usage JSG\_PRD\_CYPHER

	Free disk space on C: (%)	Total disk space on C: (Gb)	Used disk space on C: (Gb)
2/8/2025	59	79	33
2/7/2025	59	79	33
2/6/2025	58	79	33
2/5/2025	58	79	34
2/4/2025	58	79	34
2/3/2025	58	79	33
2/2/2025	58	79	33

## Harddisk Usage JSG\_PRD\_GUINAN

	Free disk space on C: (%)	Total disk space on C: (Gb)	Used disk space on C: (Gb)
2/8/2025	39	79	49
2/7/2025	39	79	49
2/6/2025	39	79	49
2/5/2025	39	79	49
2/4/2025	39	79	49
2/3/2025	39	79	49
2/2/2025	39	79	49

# Weekly SLA Customer Report

Customer JSG\_Production (24/7)  
Database ID 102



## Harddisk Usage JSG\_PRD\_LAFORGE

	Free disk space on C: (%)	Total disk space on C: (Gb)	Used disk space on C: (Gb)
2/8/2025	36	149	95
2/7/2025	36	149	96
2/6/2025	36	149	96
2/5/2025	36	149	95
2/4/2025	36	149	95
2/3/2025	36	149	95
2/2/2025	37	149	95

## Harddisk Usage JSG\_PRD\_PICARD

	Free disk space on C: (%)	Total disk space on C: (Gb)	Used disk space on C: (Gb)	Free disk space on D: (%)	Total disk space on D: (Gb)	Used disk space on D: (Gb)
2/8/2025	41	149	88	17	1,843	1,531
2/7/2025	41	149	88	17	1,843	1,534
2/6/2025	40	149	89	17	1,843	1,535
2/5/2025	41	149	88	16	1,843	1,540
2/4/2025	41	149	88	17	1,843	1,539
2/3/2025	41	149	88	18	1,843	1,515
2/2/2025	41	149	88	19	1,843	1,494

# Weekly SLA Customer Report

Customer JSG\_Production (24/7)  
Database ID 102



## Harddisk Usage JSG\_PRD\_RIKER

	Free disk space on C: (%)	Total disk space on C: (Gb)	Used disk space on C: (Gb)	Free disk space on D: (%)	Total disk space on D: (Gb)	Used disk space on D: (Gb)	Free disk space on E: (%)	Total disk space on E: (Gb)	Used disk space on E: (Gb)
2/8/2025	61	199	78	19	1,843	1,498	67	500	163
2/7/2025	61	199	78	19	1,843	1,499	72	500	138
2/6/2025	60	199	80	19	1,843	1,499	33	500	334
2/5/2025	60	199	80	19	1,843	1,501	67	500	163
2/4/2025	60	199	80	19	1,843	1,502	68	500	162
2/3/2025	60	199	80	20	1,843	1,480	68	500	162
2/2/2025	60	199	80	21	1,843	1,463	67	500	163

## Harddisk Usage JSG\_PRD\_TEBOK

	Free disk space on C: (%)	Total disk space on C: (Gb)	Used disk space on C: (Gb)
2/8/2025	55	79	36
2/7/2025	55	79	36
2/6/2025	54	79	36
2/5/2025	54	79	37
2/4/2025	54	79	37
2/3/2025	54	79	37
2/2/2025	54	79	37

# Weekly SLA Customer Report

Customer JSG\_Production (24/7)  
Database ID 102



## Harddisk Usage JSG\_PRD\_TOMALAK

	Free disk space on C: (%)	Total disk space on C: (Gb)	Used disk space on C: (Gb)
2/8/2025	57	79	34
2/7/2025	57	79	34
2/6/2025	57	79	34
2/5/2025	56	79	35
2/4/2025	56	79	35
2/3/2025	56	79	35
2/2/2025	56	79	35

## Harddisk Usage JSG\_PRD\_TROI

	Free disk space on C: (%)	Total disk space on C: (Gb)	Used disk space on C: (Gb)
2/8/2025	32	149	101
2/7/2025	32	149	101
2/6/2025	33	149	101
2/5/2025	33	149	100
2/4/2025	33	149	100
2/3/2025	33	149	100
2/2/2025	33	149	100

# Weekly SLA Customer Report

Customer JSG\_Production (24/7)  
Database ID 102



Harddisk Usage JSG\_PRD\_WORF

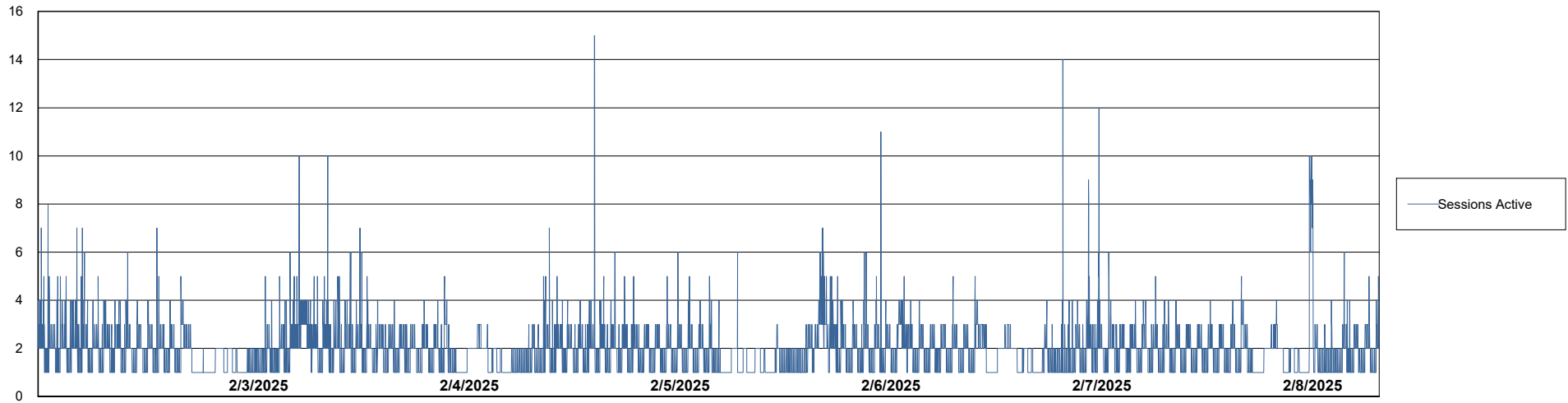
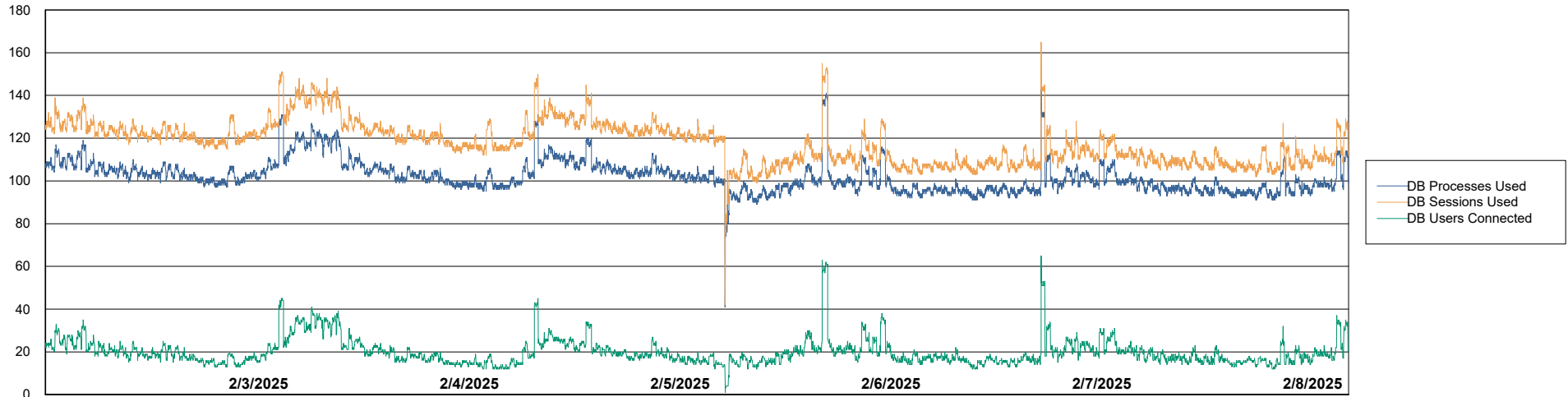
	Free disk space on C: (%)	Total disk space on C: (Gb)	Used disk space on C: (Gb)
2/8/2025	50	149	75
2/7/2025	49	149	76
2/6/2025	48	149	77
2/5/2025	49	149	77
2/4/2025	49	149	77
2/3/2025	49	149	77
2/2/2025	49	149	77

# Weekly SLA Customer Report

Customer JSG\_Production (24/7)  
Database ID 102



## Database Performance JSG\_PRD\_BASHIR\_DB\_ABS1



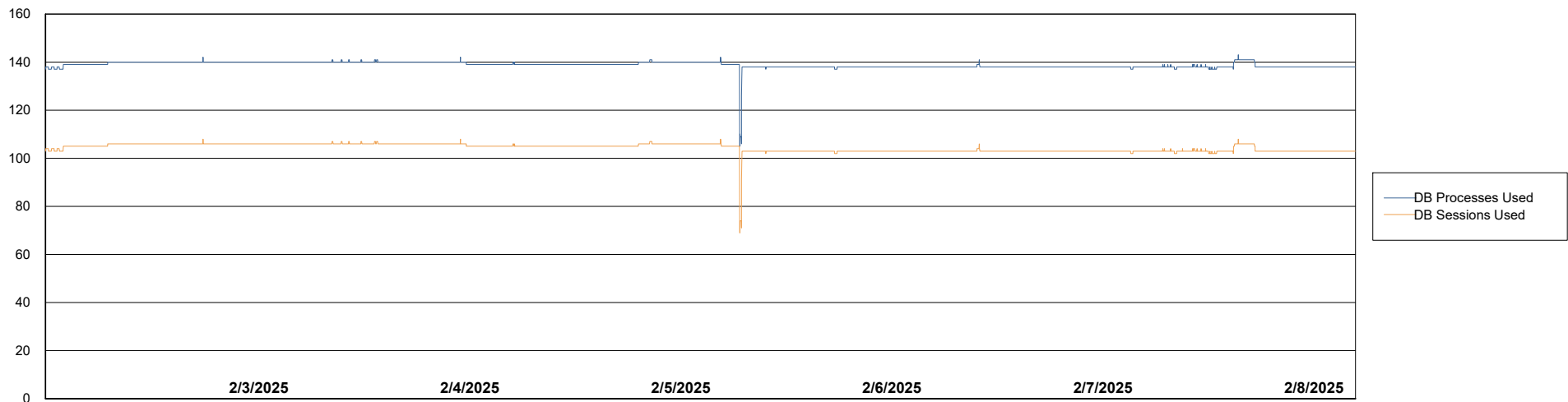
# Weekly SLA Customer Report

Customer JSG\_Production (24/7)  
Database ID 102



## Database Performance JSG\_PRD\_PICARD\_DB\_ABS1

DB Processes Max 4  
DB Processes Max 0  
DB Processes Max 1,000

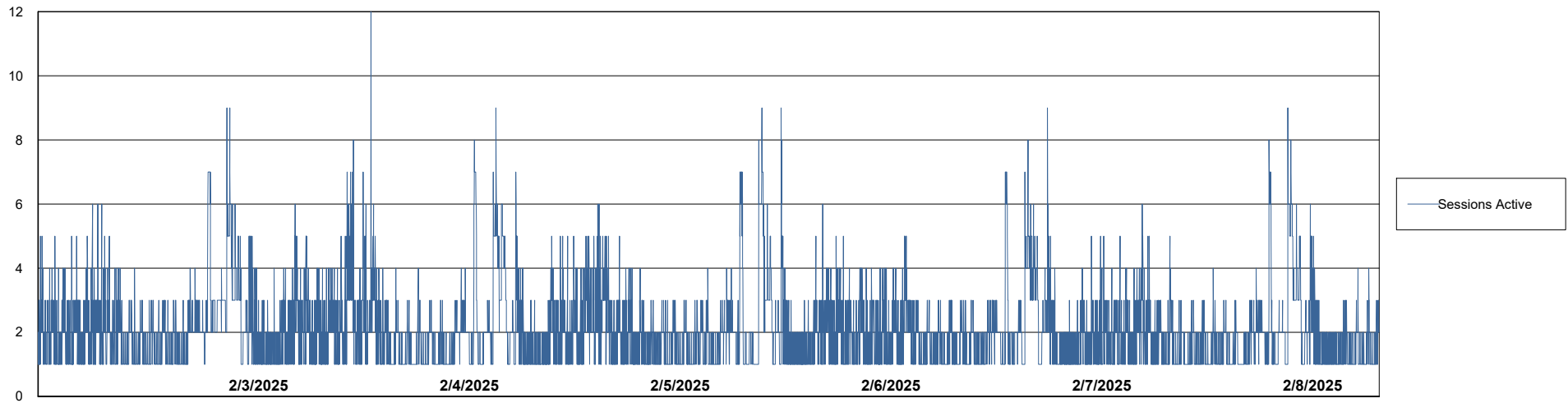
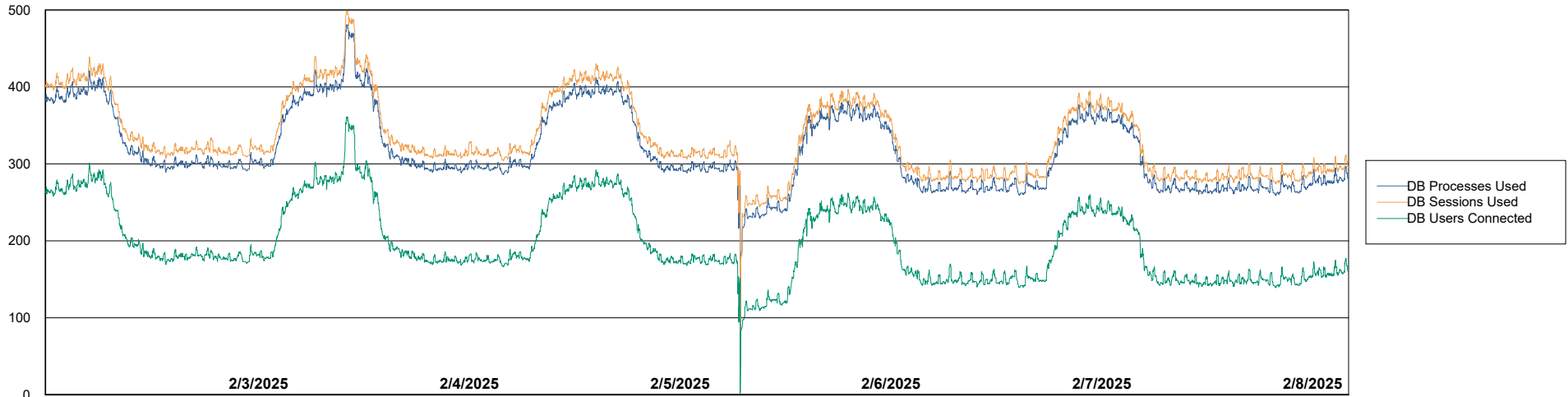


# Weekly SLA Customer Report

Customer JSG\_Production (24/7)  
Database ID 102



## Database Performance JSG\_PRD\_RIKER\_DB\_HSBABS1



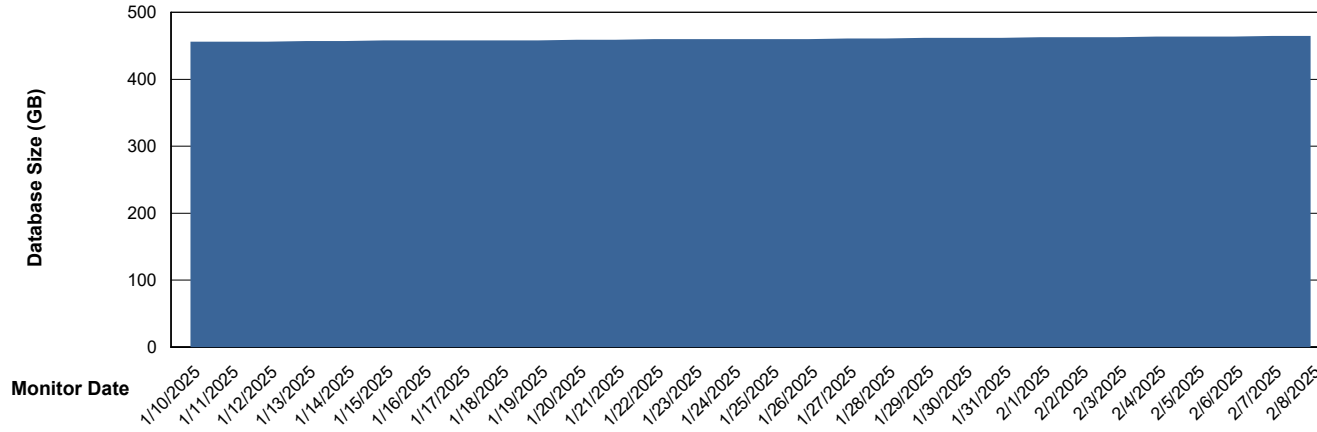
# Weekly SLA Customer Report

Customer JSG\_Production (24/7)  
Database ID 102



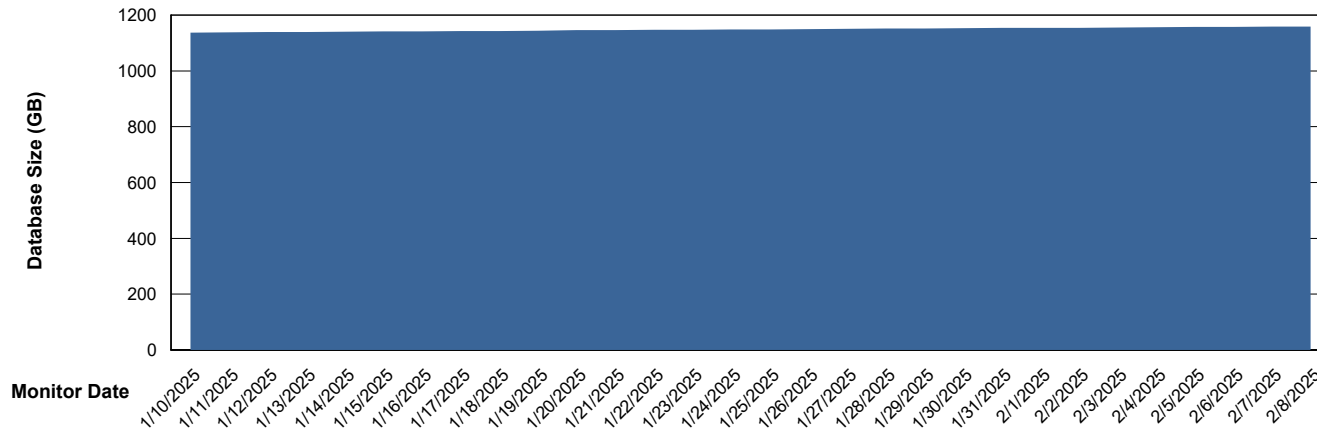
DATABASE SIZE JSG\_PRD\_BASHIR\_DB\_ABS1

### Database growth over last month



DATABASE SIZE JSG\_PRD\_RIKER\_DB\_HSBABS1

### Database growth over last month



# Weekly SLA Customer Report

Customer JSG\_Production (24/7)  
 Database ID 102



Database Tablespace JSG\_PRD\_BASHIR\_DB\_ABS1

Date	Tablespace Name	Filesize (Gb)	Usedsize (Gb)	Percentage free
2/8/2025	ABSDATA	231	198	14
	INDX	320	262	18
2/7/2025	ABSDATA	231	198	14
	INDX	320	262	18
2/6/2025	ABSDATA	231	198	14
	INDX	320	262	18
2/5/2025	ABSDATA	231	198	14
	INDX	320	262	18
2/4/2025	ABSDATA	231	198	14
	INDX	320	262	18
2/3/2025	ABSDATA	231	197	15
	INDX	320	261	18
2/2/2025	ABSDATA	231	198	14
	INDX	310	261	16

# Weekly SLA Customer Report

Customer JSG\_Production (24/7)  
 Database ID 102



Database Tablespace JSG\_PRD\_RIKER\_DB\_HSBABS1

Date	Tablespace Name	Filesize (Gb)	Usedsize (Gb)	Percentage free
2/8/2025	ABSDATA	1,312	1,085	17
	INDX	66	53	19
2/7/2025	ABSDATA	1,312	1,085	17
	INDX	66	53	19
2/6/2025	ABSDATA	1,312	1,084	17
	INDX	66	53	19
2/5/2025	ABSDATA	1,312	1,084	17
	INDX	66	53	19
2/4/2025	ABSDATA	1,312	1,083	17
	INDX	66	53	19
2/3/2025	ABSDATA	1,312	1,082	17
	INDX	66	53	19
2/2/2025	ABSDATA	1,280	1,081	16
	INDX	66	53	19

BI Status and last ETL error for JSG\_PRD\_BASHIR\_DB\_ABS1

	Mon 3/2/2025	Tue 4/2/2025	Wed 5/2/2025	Thu 6/2/2025	Fri 7/2/2025	Sat 8/2/2025
<b>ABS DataWarehouse ETL Health</b>	OK	OK	OK	OK	OK	OK
<b>ABS DWHStaging ETL Health</b>	OK	OK	OK	OK	OK	OK

## Weekly SLA Customer Report

Customer JSG\_Production (24/7)  
Database ID 102



BI last ETL error for	JSG_PRD_BASHIR_DB_ABS1
Mon, 3-02-2025	None
Thu, 6-02-2025	None
Wed, 5-02-2025	None
Tue, 4-02-2025	None
Sat, 8-02-2025	None
Sun, 2-02-2025	None
Sun, 2-02-2025	LOAD_FACT_REALTIME_CUST_DATA 10 minutely job took too long
Sat, 8-02-2025	None
Fri, 7-02-2025	None
Sun, 2-02-2025	None
Fri, 7-02-2025	None
Mon, 3-02-2025	None
Tue, 4-02-2025	None
Wed, 5-02-2025	None
Thu, 6-02-2025	None

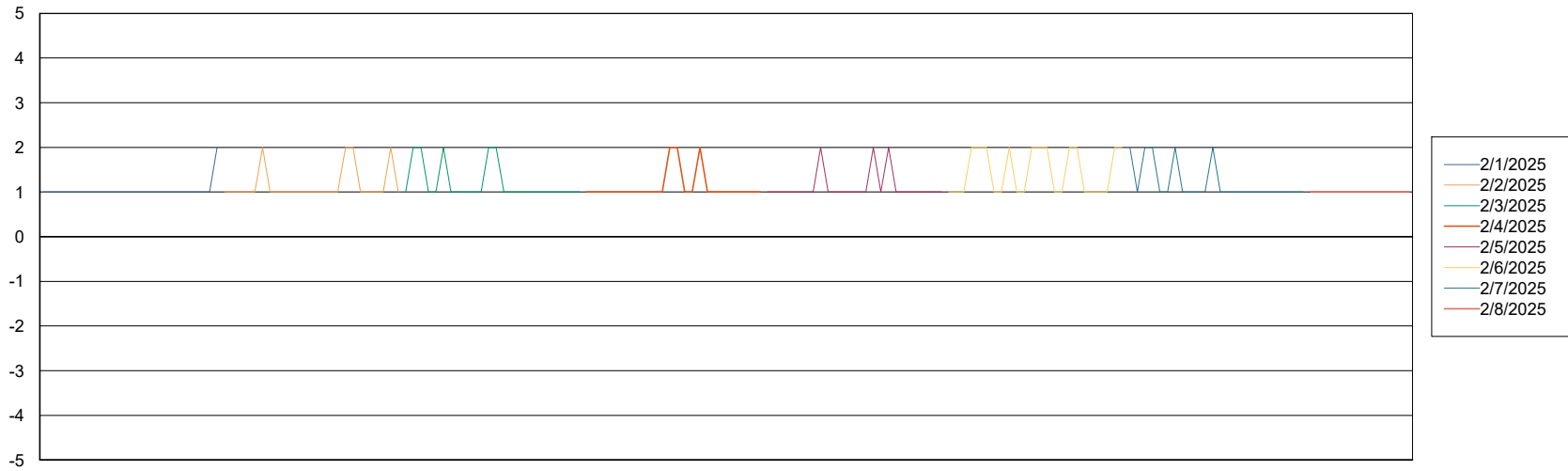
# Weekly SLA Customer Report

Customer JSG\_Production (24/7)  
Database ID 102



Standby Database Health JSG\_Production (24/7)

## Recovery lag for last 7 days



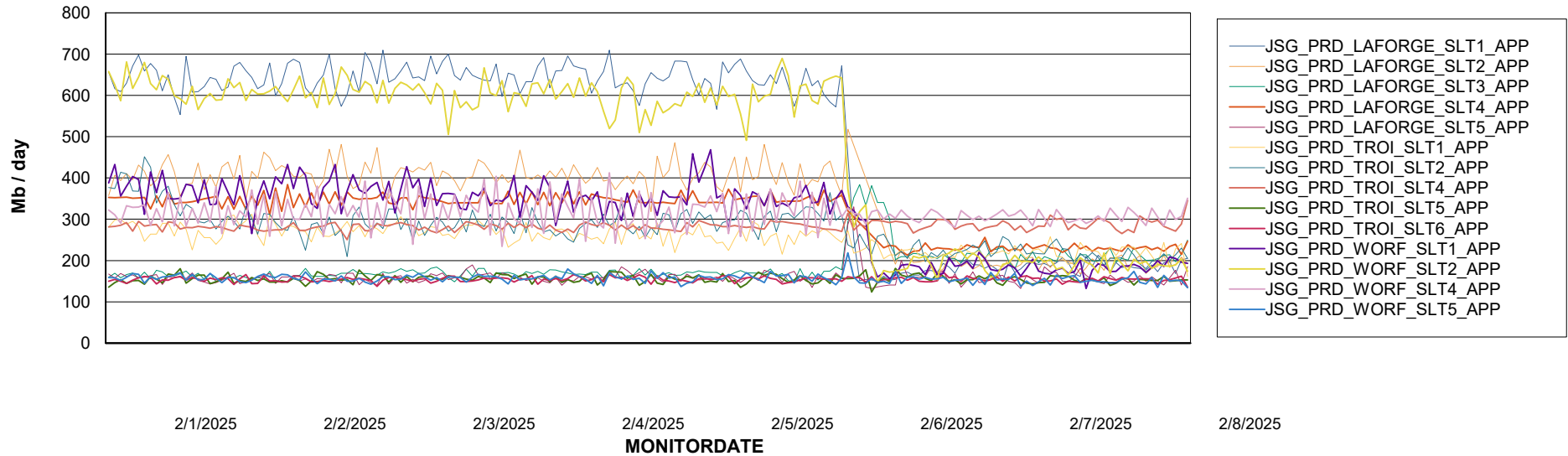
# Weekly SLA Customer Report

Customer JSG\_Production (24/7)  
Database ID 102

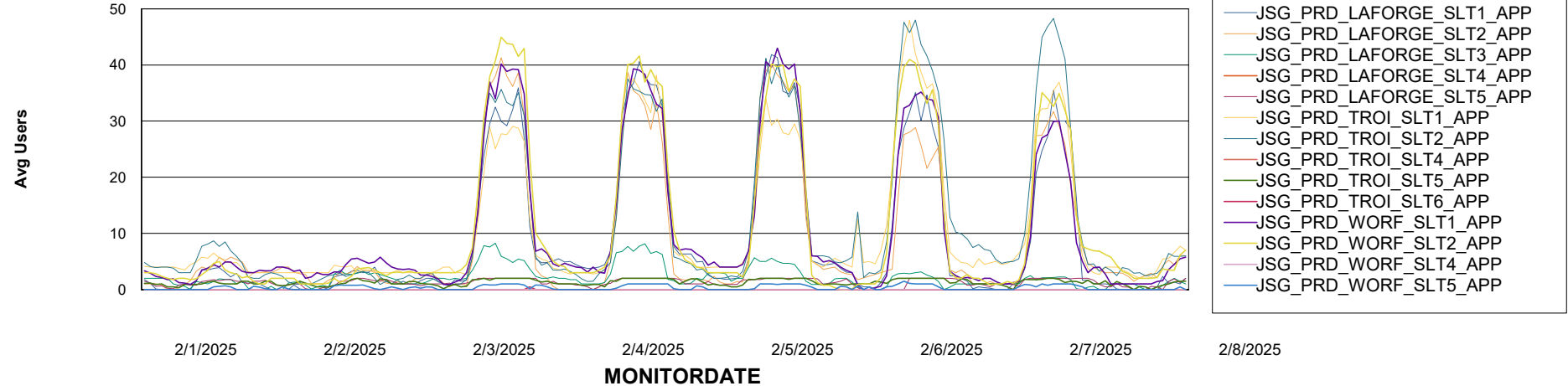


## ABSSolute Application Server Services

### Avg memory used per ABS Server Service



### Avg users per day per ABS server



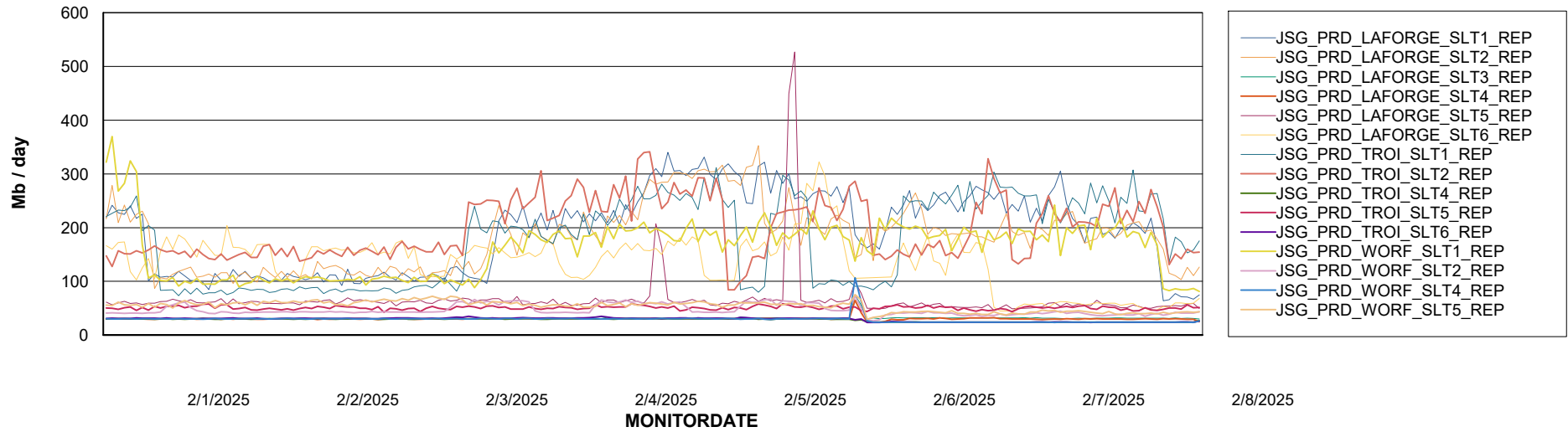
# Weekly SLA Customer Report

Customer JSG\_Production (24/7)  
Database ID 102



## ABSSolute Application ReportServer Services

### Avg memory used per ReportServer Service



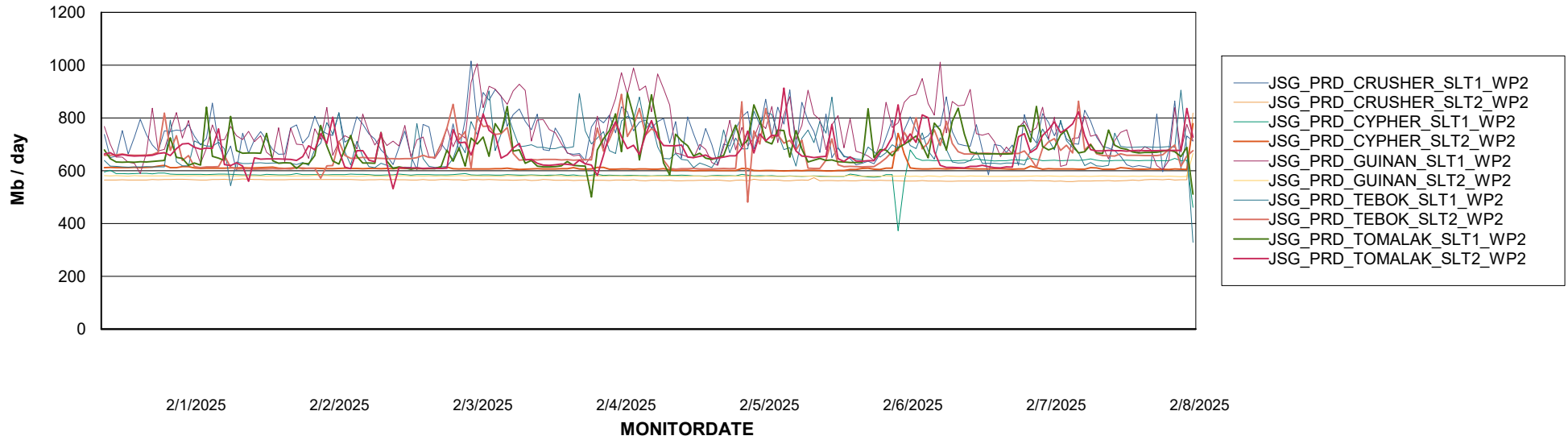
# Weekly SLA Customer Report

Customer JSG\_Production (24/7)  
Database ID 102



## ABSSolute Web Component Services

### Avg memory used per ABS Web component



# Weekly SLA Customer Report

Customer JSG\_Production (24/7)  
Database ID 102



### Disaster per ABS component

