

Weekly SLA Customer Report

Customer LSS_CHINA_Production
 Database ID 202



Harddisk Usage LSS_CHINA_PRD_LIAZCNABSAPPL1

	Free disk space on C: (%)	Total disk space on C: (Gb)	Used disk space on C: (Gb)	Free disk space on D: (%)	Total disk space on D: (Gb)	Used disk space on D: (Gb)
11/2/2024	24	127	96	73	64	17
11/1/2024	24	127	96	73	64	17
10/31/2024	24	127	96	73	64	17
10/30/2024	24	127	96	73	64	17
10/29/2024	24	127	96	73	64	17
10/28/2024	24	127	96	73	64	17
10/27/2024	24	127	96	73	64	17

Harddisk Usage LSS_CHINA_PRD_LIAZCNABSAPPL2

	Free disk space on C: (%)	Total disk space on C: (Gb)	Used disk space on C: (Gb)	Free disk space on D: (%)	Total disk space on D: (Gb)	Used disk space on D: (Gb)
11/2/2024	64	127	46	92	64	5
11/1/2024	63	127	46	92	64	5
10/31/2024	63	127	47	92	64	5
10/30/2024	63	127	47	92	64	5
10/29/2024	63	127	47	92	64	5
10/28/2024	62	127	48	92	64	5
10/27/2024	62	127	48	92	64	5

Weekly SLA Customer Report

Customer LSS_CHINA_Production
 Database ID 202



Harddisk Usage LSS_CHINA_PRD_liazcne2VMProdABSSoluteDB1

	Free disk space on / (%)	Total disk space on / (Gb)	Used disk space on / (Gb)	Free disk space on /boot (%)	Total disk space on /boot (Gb)	Used disk space on /boot (Gb)	Free disk space on /u01 (%)	Total disk space on /u01 (Gb)	Used disk space on /u01 (Gb)	Free disk space on /u02 (%)
11/2/2024	76	63	15	69	0	0	57	49	20	35
11/1/2024	76	63	15	69	0	0	57	49	20	35
10/31/2024	76	63	15	69	0	0	57	49	20	35
10/30/2024	76	63	15	69	0	0	57	49	20	35
10/29/2024	76	63	15	69	0	0	57	49	20	35
10/28/2024	76	63	15	69	0	0	57	49	20	35
10/27/2024	76	63	15	69	0	0	56	49	20	35

Harddisk Usage LSS_CHINA_PRD_liazcne2VMProdABSSoluteDB2

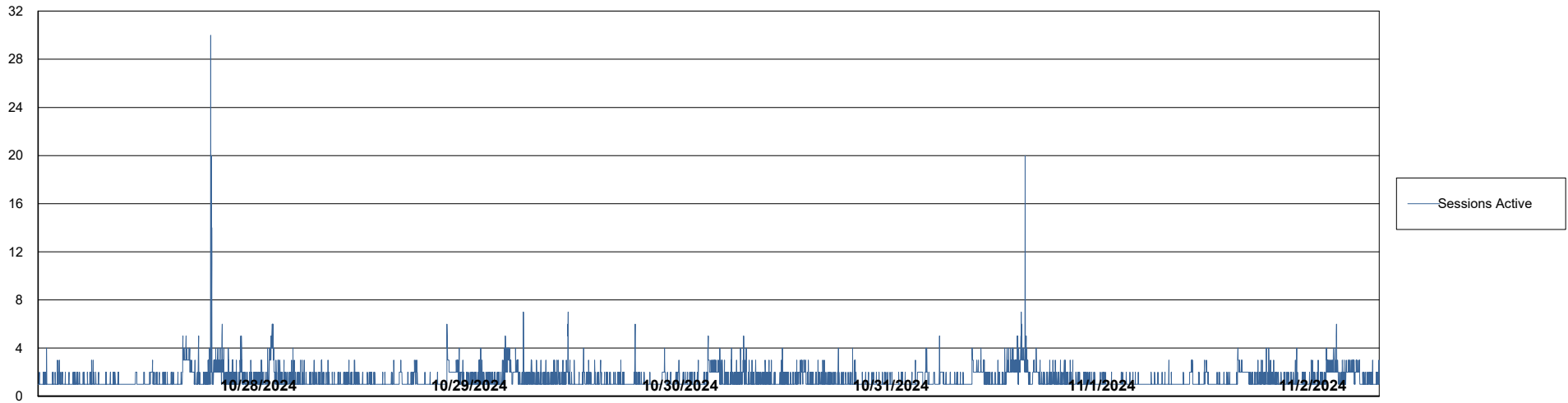
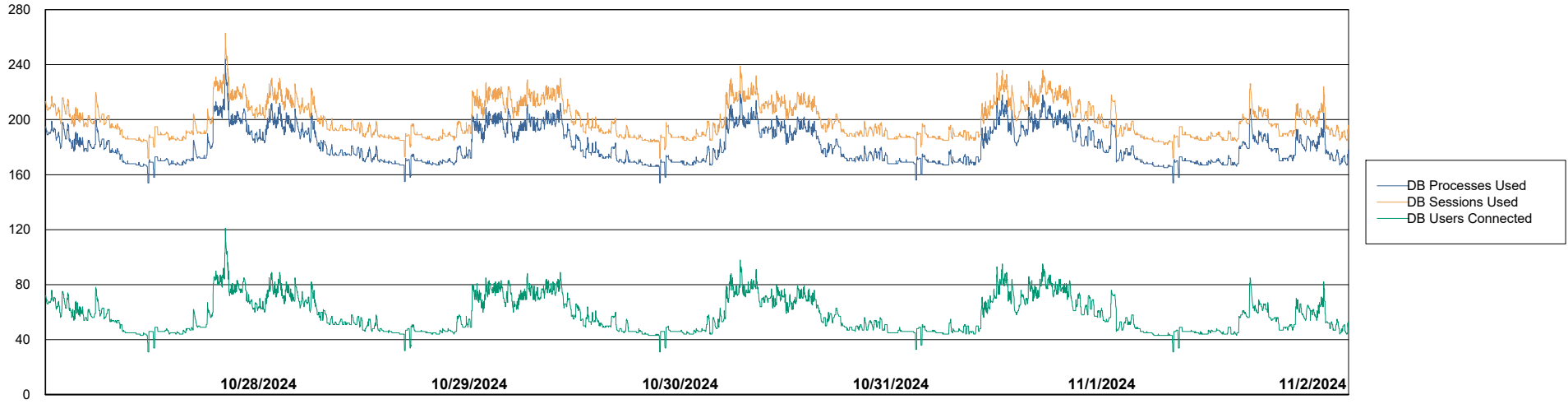
	Free disk space on / (%)	Total disk space on / (Gb)	Used disk space on / (Gb)	Free disk space on /boot (%)	Total disk space on /boot (Gb)	Used disk space on /boot (Gb)	Free disk space on /u01 (%)	Total disk space on /u01 (Gb)	Used disk space on /u01 (Gb)	Free disk space on /u02 (%)
11/2/2024	89	63	7	69	0	0	64	49	17	39
11/1/2024	89	63	7	69	0	0	64	49	17	39
10/31/2024	89	63	7	69	0	0	64	49	17	39
10/30/2024	89	63	7	69	0	0	64	49	17	39
10/29/2024	89	63	7	69	0	0	64	49	17	39
10/28/2024	89	63	7	69	0	0	64	49	17	39
10/27/2024	89	63	7	69	0	0	64	49	17	39

Weekly SLA Customer Report

Customer LSS_CHINA_Production
Database ID 202



Database Performance LSS_CHINA_PRD_liazcne2VMPProdABSSoluteDB1_ABS1



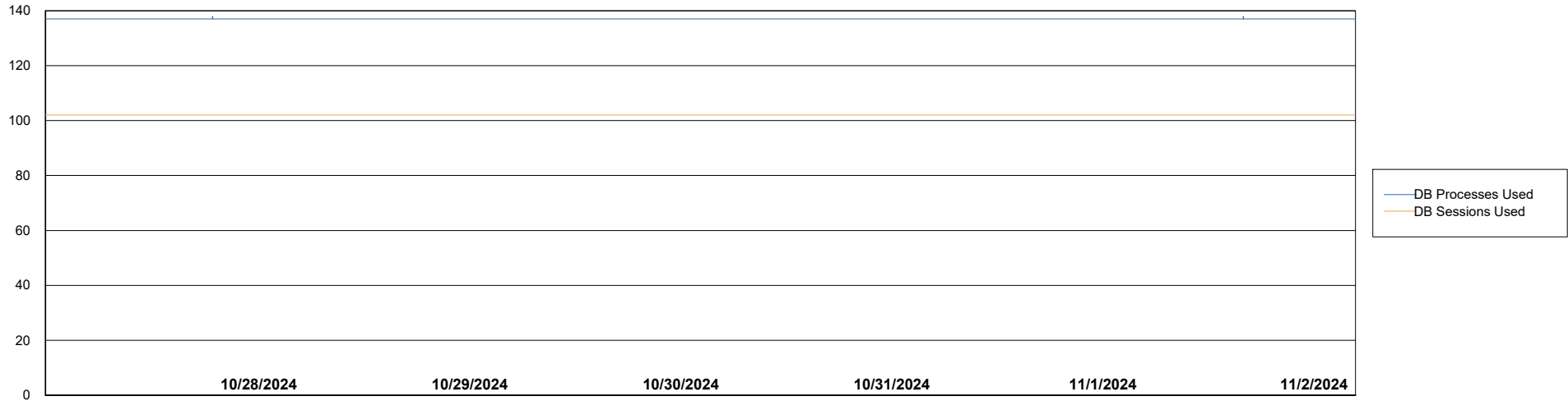
Weekly SLA Customer Report

Customer LSS_CHINA_Production
Database ID 202



Database Performance LSS_CHINA_PRD_liazcne2VMProdABSSoluteDB2_HSBABS1

DB Processes Max 4
DB Processes Max 0
DB Processes Max 1,000



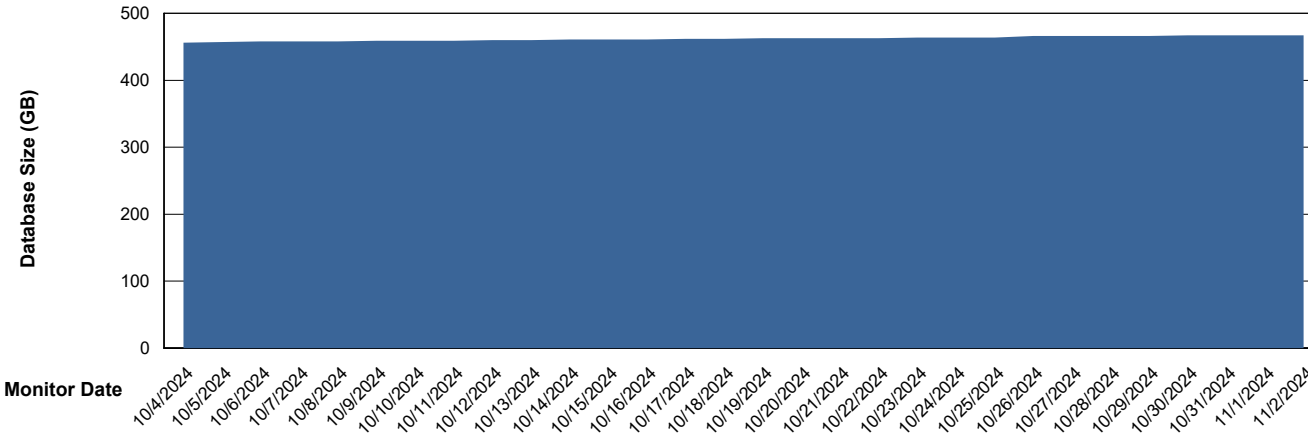
Weekly SLA Customer Report

Customer LSS_CHINA_Production
 Database ID 202



DATABASE SIZE LSS_CHINA_PRD_liazcne2VMProdABSSoluteDB1_ABS1

Database growth over last month



Database Tablespace LSS_CHINA_PRD_liazcne2VMProdABSSoluteDB1_ABS1

Date	Tablespace Name	Filesize (Gb)	Usedsize (Gb)	Percentage free
11/2/2024	ABSDATA	504	413	18
	INDX	42	32	25
11/1/2024	ABSDATA	504	413	18
	INDX	42	32	25
10/31/2024	ABSDATA	504	413	18
	INDX	42	32	25
10/30/2024	ABSDATA	504	413	18
	INDX	42	32	25
10/29/2024	ABSDATA	504	412	18
	INDX	42	32	25
10/28/2024	ABSDATA	504	412	18
	INDX	42	32	25
10/27/2024	ABSDATA	504	412	18
	INDX	42	32	25

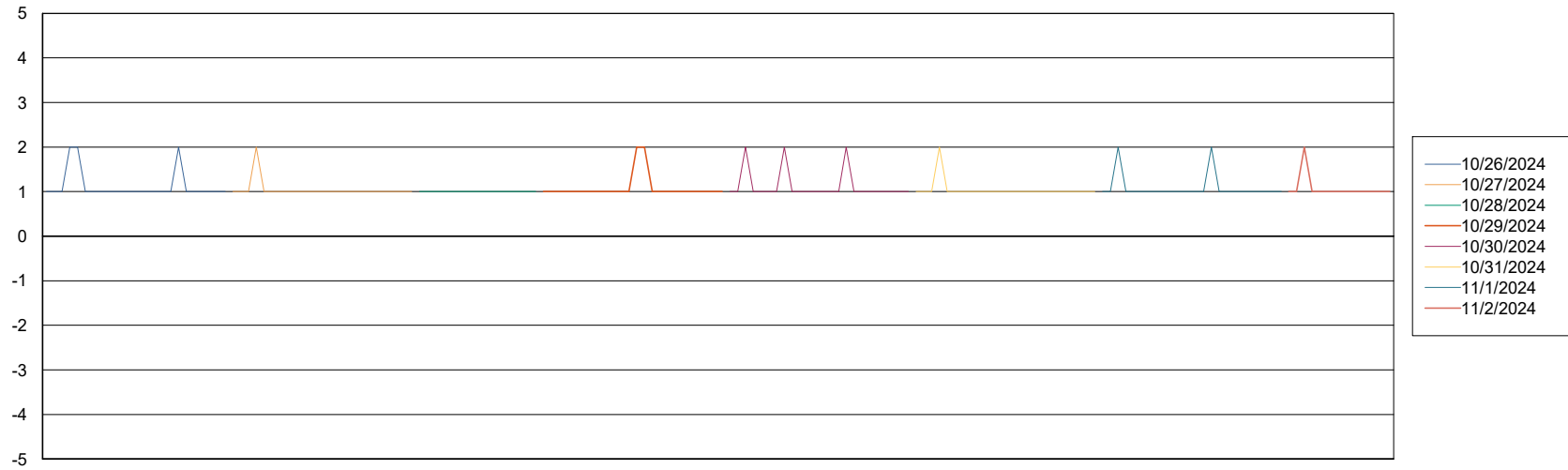
Weekly SLA Customer Report

Customer LSS_CHINA_Production
Database ID 202



Standby Database Health LSS_CHINA_Production

Recovery lag for last 7 days



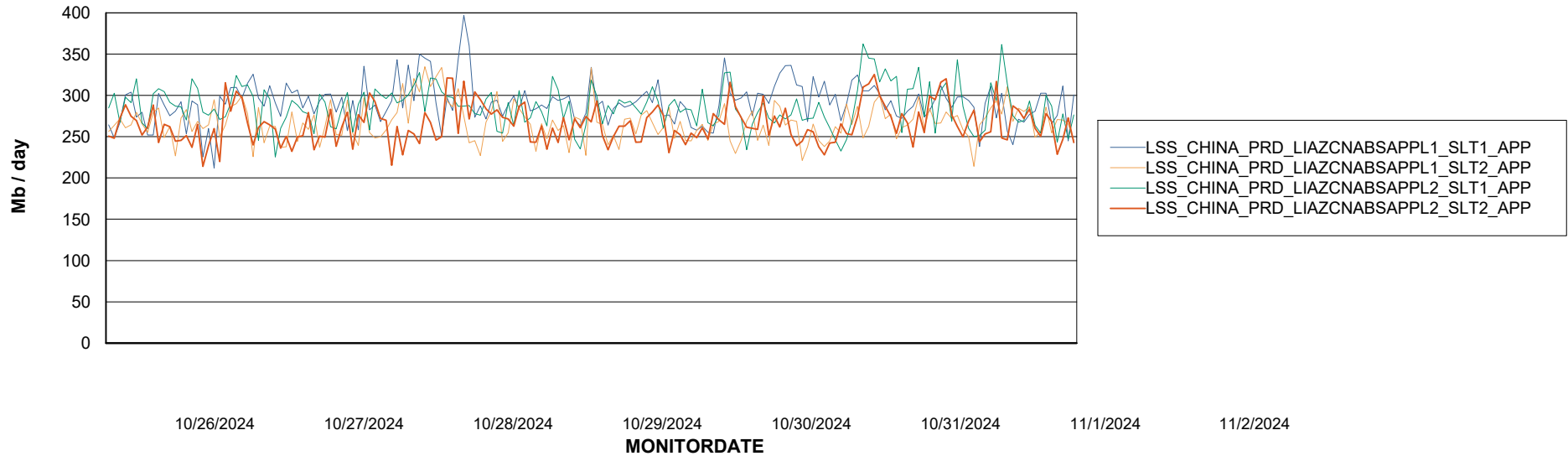
Weekly SLA Customer Report

Customer LSS_CHINA_Production
Database ID 202

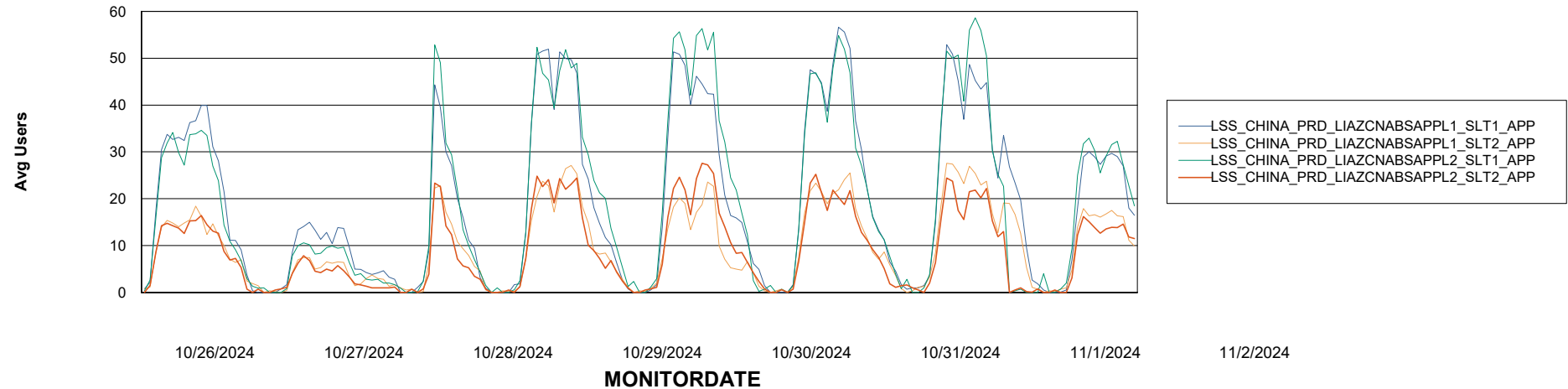


ABSSolute Application Server Services

Avg memory used per ABS Server Service



Avg users per day per ABS server



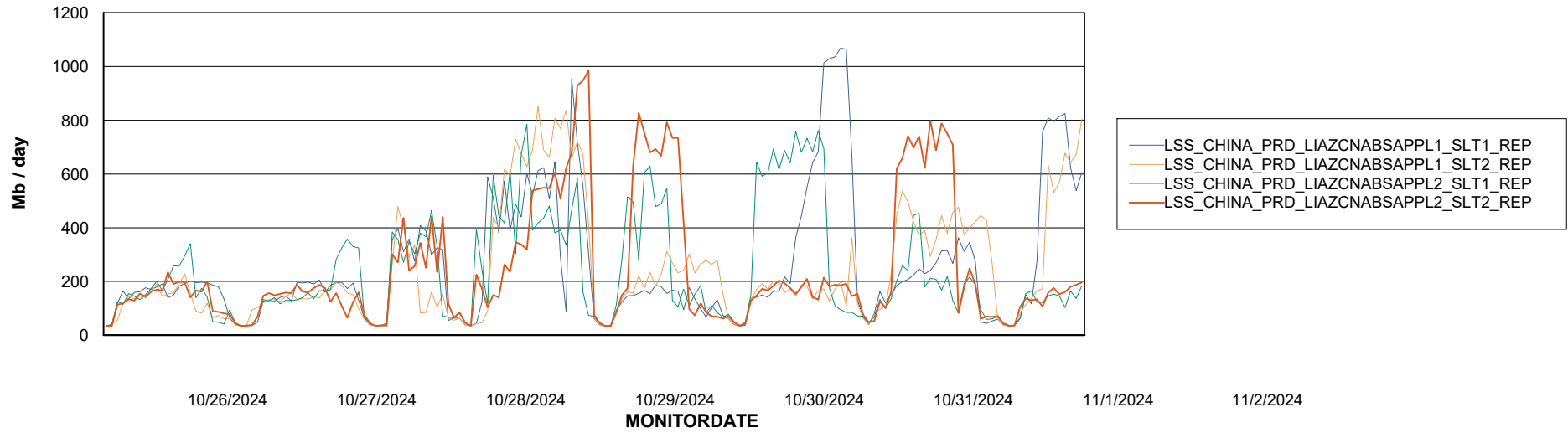
Weekly SLA Customer Report

Customer LSS_CHINA_Production
Database ID 202



ABSSolute Application ReportServer Services

Avg memory used per ReportServer Service



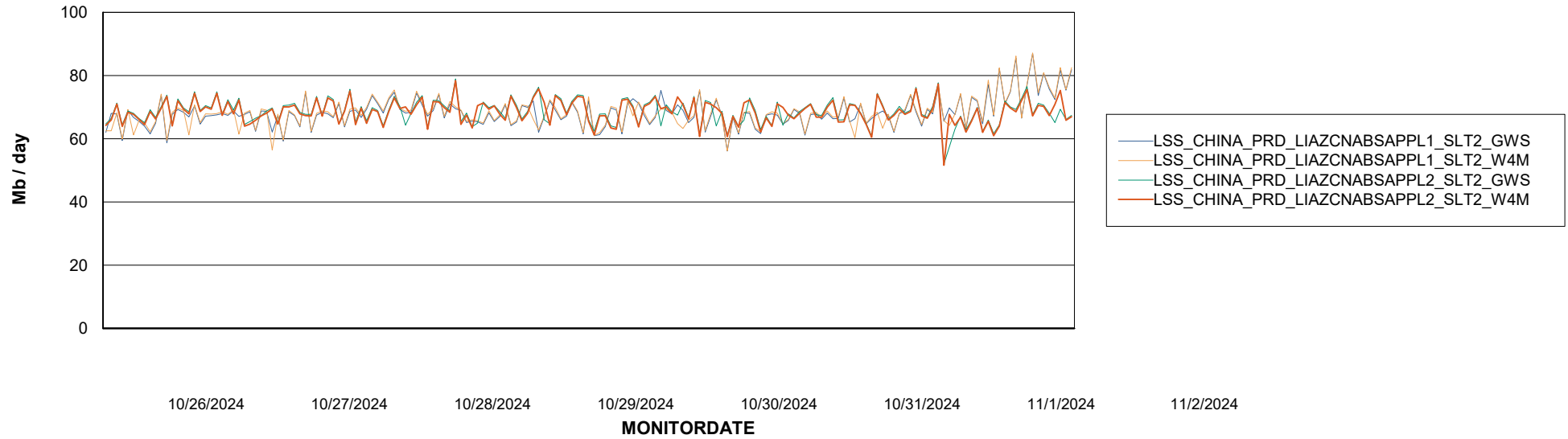
Weekly SLA Customer Report

Customer LSS_CHINA_Production
Database ID 202



ABSSolute Web Component Services

Avg memory used per ABS Web component



Weekly SLA Customer Report

Customer LSS_CHINA_Production
Database ID 202



Disaster per ABS component

