

# Weekly SLA Customer Report

Customer LSS\_CHINA\_Production  
Database ID 202



## Harddisk Usage LSS\_CHINA\_PRD\_LIAZCNABSAPPL1

	Free disk space on C: (%)	Total disk space on C: (Gb)	Used disk space on C: (Gb)	Free disk space on D: (%)	Total disk space on D: (Gb)	Used disk space on D: (Gb)
8/31/2024	30	127	88	73	64	17
8/30/2024	30	127	88	73	64	17
8/29/2024	30	127	88	73	64	17
8/28/2024	30	127	88	73	64	17
8/27/2024	30	127	88	73	64	17
8/26/2024	30	127	88	73	64	17
8/25/2024	30	127	88	73	64	17

## Harddisk Usage LSS\_CHINA\_PRD\_LIAZCNABSAPPL2

	Free disk space on C: (%)	Total disk space on C: (Gb)	Used disk space on C: (Gb)	Free disk space on D: (%)	Total disk space on D: (Gb)	Used disk space on D: (Gb)
8/31/2024	63	127	46	92	64	5
8/30/2024	64	127	46	92	64	5
8/29/2024	63	127	46	92	64	5
8/28/2024	64	127	45	92	64	5
8/27/2024	65	127	45	92	64	5
8/26/2024	65	127	45	92	64	5
8/25/2024	65	127	44	92	64	5

# Weekly SLA Customer Report

Customer LSS\_CHINA\_Production  
Database ID 202



## Harddisk Usage LSS\_CHINA\_PRD\_liazcne2VMProdABSSoluteDB1

	Free disk space on / (%)	Total disk space on / (Gb)	Used disk space on / (Gb)	Free disk space on /boot (%)	Total disk space on /boot (Gb)	Used disk space on /boot (Gb)	Free disk space on /u01 (%)	Total disk space on /u01 (Gb)	Used disk space on /u01 (Gb)	Free disk space on /u02 (%)
8/31/2024	76	63	15	69	0	0	53	49	22	38
8/30/2024	76	63	15	69	0	0	53	49	22	38
8/29/2024	76	63	15	69	0	0	53	49	22	38
8/28/2024	76	63	15	69	0	0	53	49	22	38
8/27/2024	76	63	15	69	0	0	53	49	22	38
8/26/2024	76	63	15	69	0	0	46	49	25	38
8/25/2024	76	63	15	69	0	0	43	49	27	38

## Harddisk Usage LSS\_CHINA\_PRD\_liazcne2VMProdABSSoluteDB2

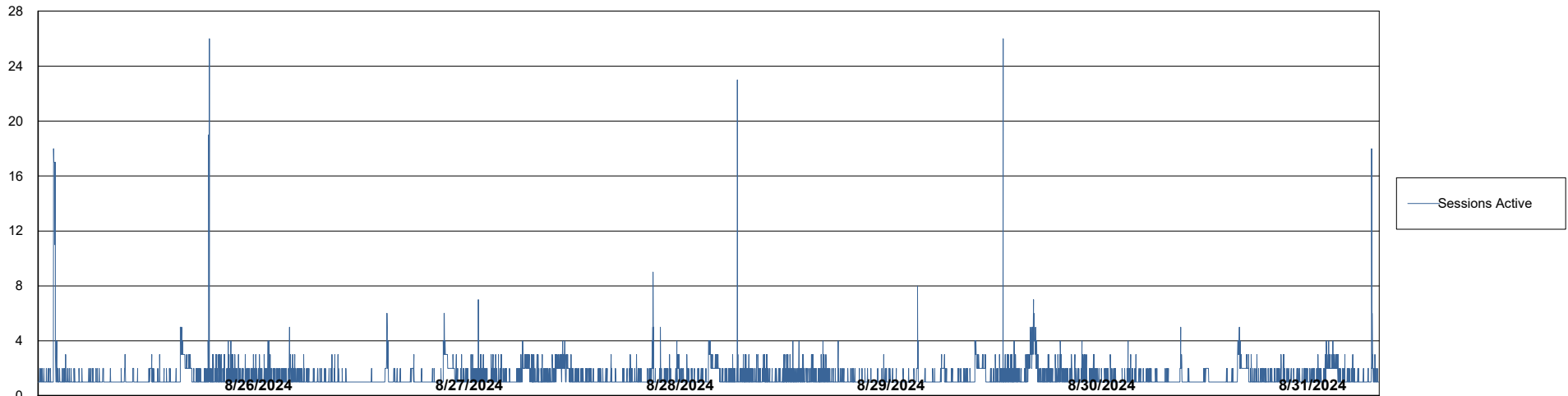
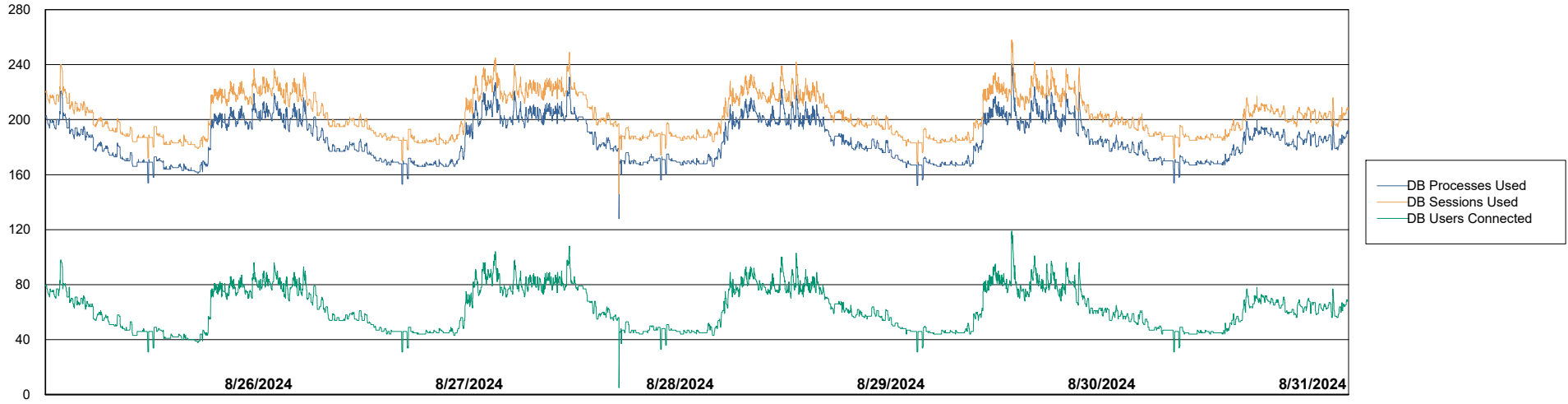
	Free disk space on / (%)	Total disk space on / (Gb)	Used disk space on / (Gb)	Free disk space on /boot (%)	Total disk space on /boot (Gb)	Used disk space on /boot (Gb)	Free disk space on /u01 (%)	Total disk space on /u01 (Gb)	Used disk space on /u01 (Gb)	Free disk space on /u02 (%)
8/31/2024	89	63	7	69	0	0	71	49	13	41
8/30/2024	89	63	7	69	0	0	71	49	13	41
8/29/2024	89	63	7	69	0	0	71	49	13	41
8/28/2024	89	63	7	69	0	0	71	49	13	41
8/27/2024	89	63	7	69	0	0	71	49	13	41
8/26/2024	89	63	7	69	0	0	71	49	13	41
8/25/2024	89	63	7	69	0	0	71	49	13	41

# Weekly SLA Customer Report

Customer LSS\_CHINA\_Production  
Database ID 202



## Database Performance LSS\_CHINA\_PRD\_liazcne2VMProdABSSoluteDB1\_ABS1



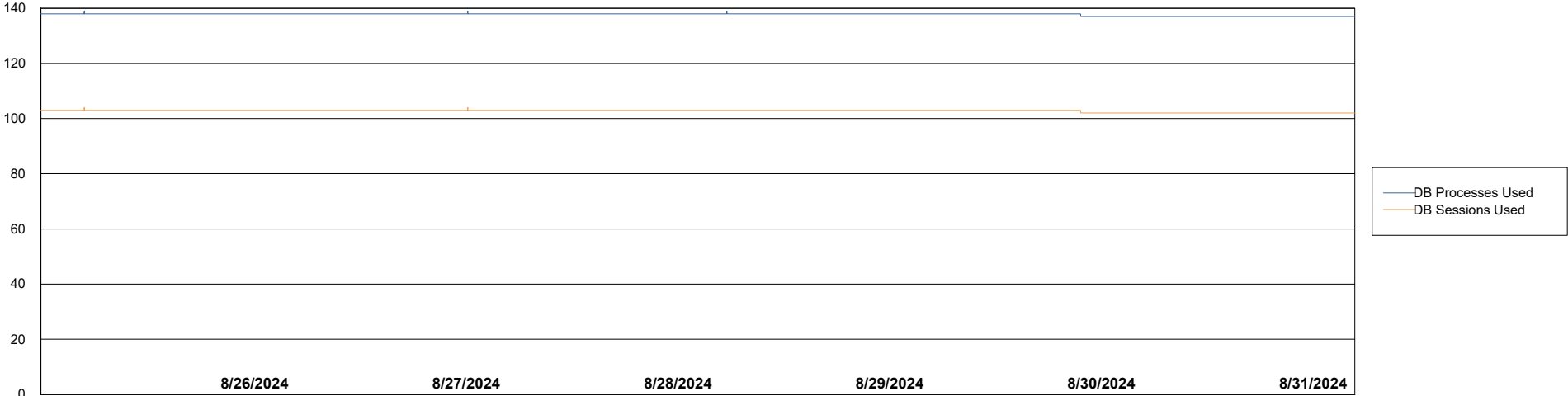
# Weekly SLA Customer Report

Customer LSS\_CHINA\_Production  
Database ID 202



Database Performance LSS\_CHINA\_PRD\_liazcne2VMProdABSSoluteDB2\_HSBABS1

DB Processes Max 1,000  
DB Processes Max 4  
DB Processes Max 0



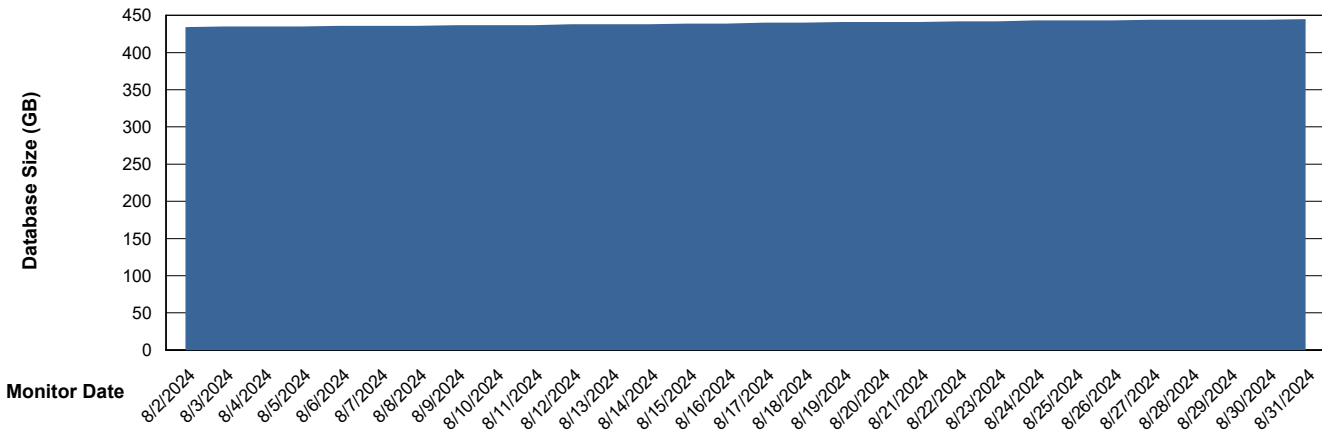
# Weekly SLA Customer Report

Customer LSS\_CHINA\_Production  
 Database ID 202



DATABASE SIZE LSS\_CHINA\_PRD\_liazcne2VMProdABSSoluteDB1\_ABS1

## Database growth over last month



Database Tablespace LSS\_CHINA\_PRD\_liazcne2VMProdABSSoluteDB1\_ABS1

Date	Tablespace Name	Filesize (Gb)	Usedsize (Gb)	Percentage free
8/31/2024	ABSDATA	480	392	18
	INDX	42	31	26
8/30/2024	ABSDATA	480	391	18
	INDX	42	31	26
8/29/2024	ABSDATA	480	391	18
	INDX	42	31	26
8/28/2024	ABSDATA	480	391	19
	INDX	42	31	26
8/27/2024	ABSDATA	480	391	19
	INDX	42	31	26
8/26/2024	ABSDATA	480	390	19
	INDX	42	31	26
8/25/2024	ABSDATA	480	390	19
	INDX	42	31	26

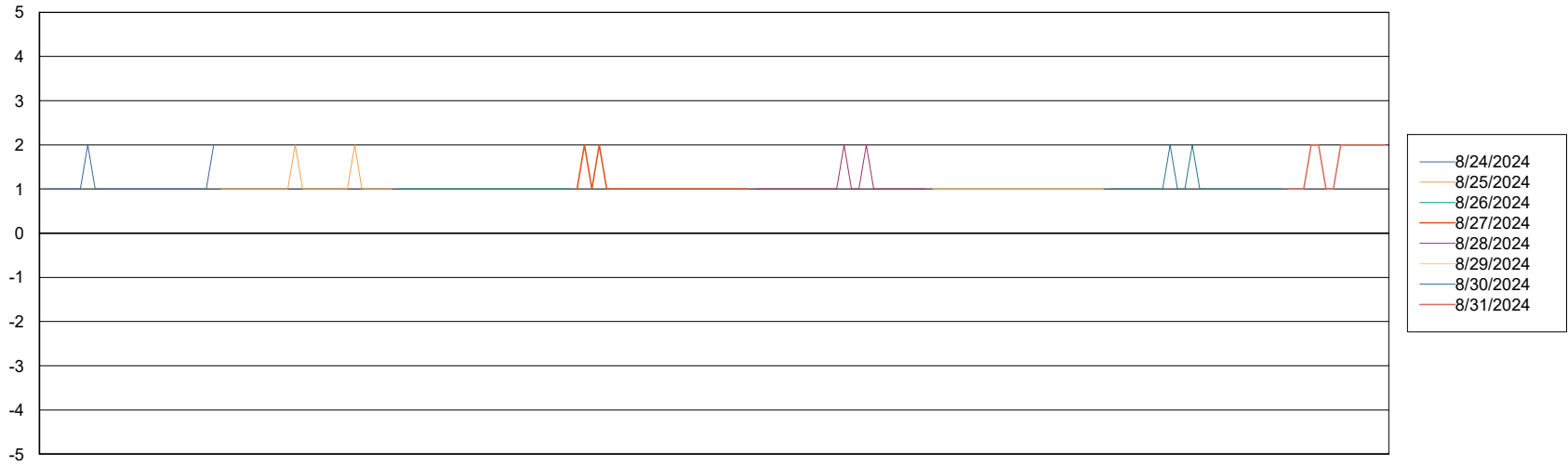
# Weekly SLA Customer Report

Customer LSS\_CHINA\_Production  
Database ID 202



Standby Database Health LSS\_CHINA\_Production

### Recovery lag for last 7 days



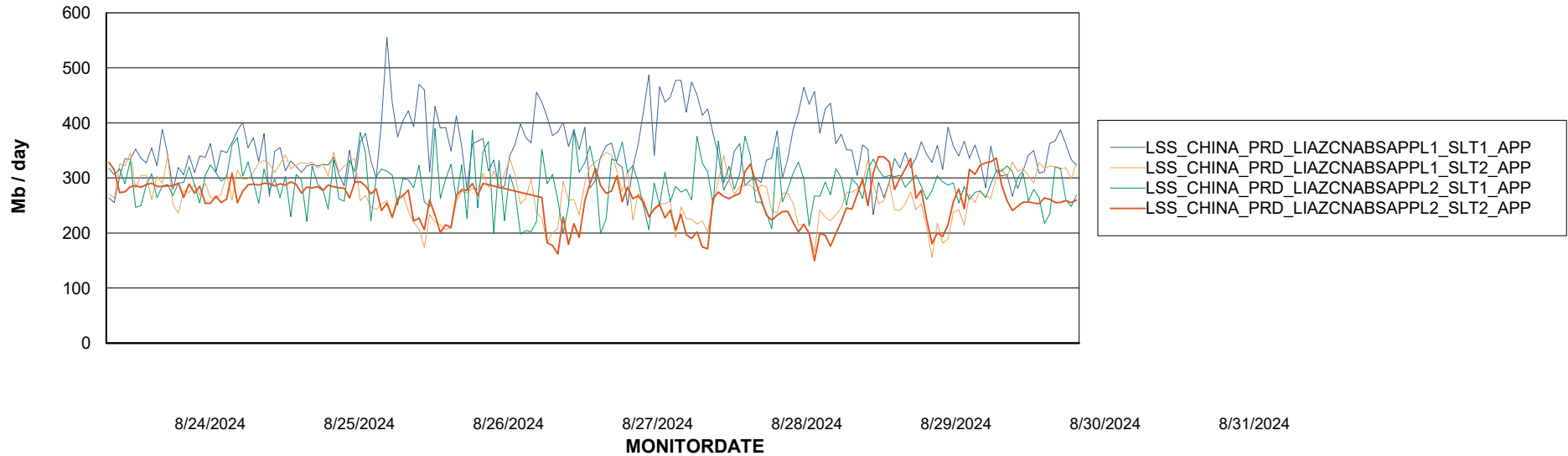
# Weekly SLA Customer Report

Customer LSS\_CHINA\_Production  
Database ID 202

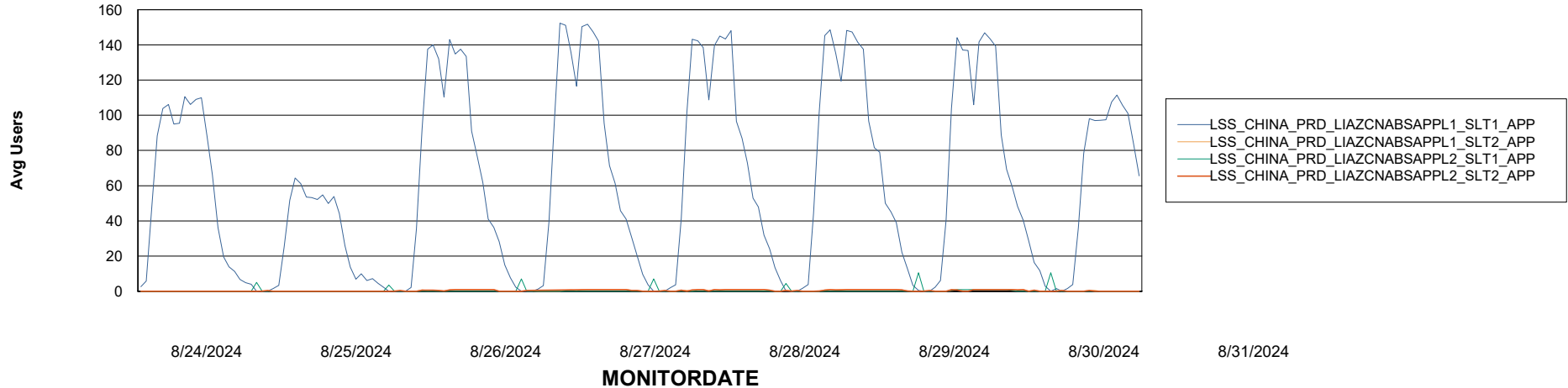


## ABSSolute Application Server Services

### Avg memory used per ABS Server Service



### Avg users per day per ABS server



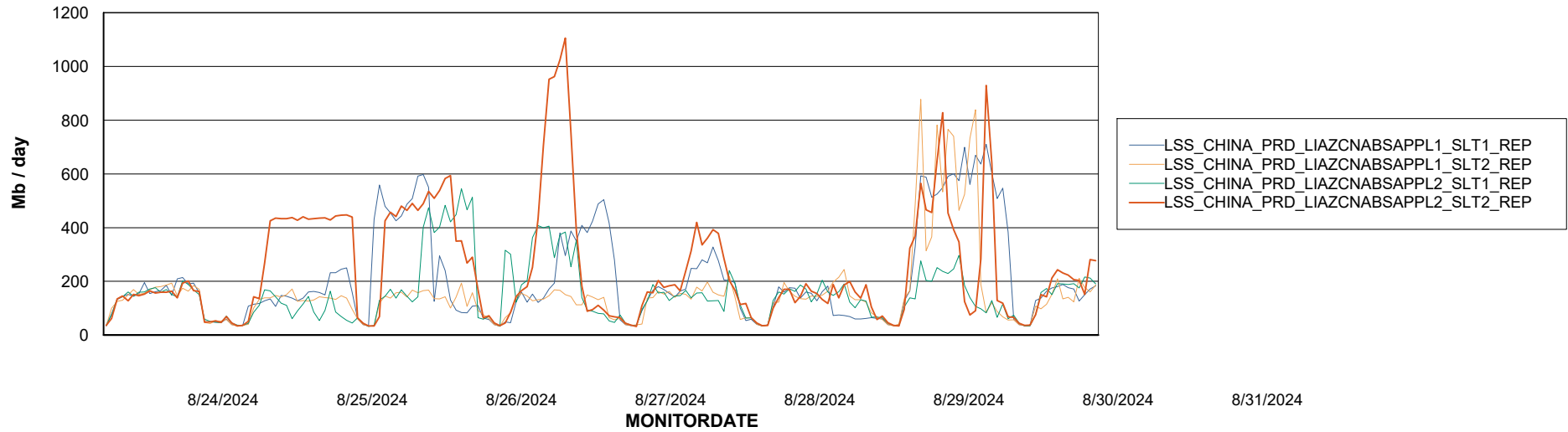
# Weekly SLA Customer Report

Customer LSS\_CHINA\_Production  
Database ID 202



## ABSSolute Application ReportServer Services

### Avg memory used per ReportServer Service



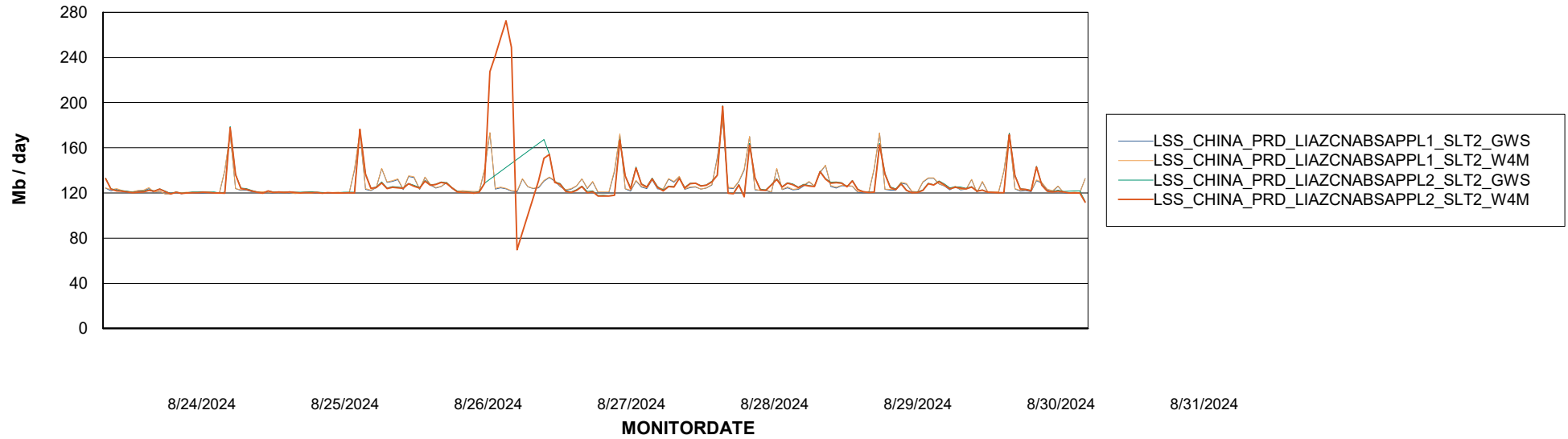
# Weekly SLA Customer Report

Customer LSS\_CHINA\_Production  
Database ID 202



## ABSSolute Web Component Services

### Avg memory used per ABS Web component



# Weekly SLA Customer Report

Customer LSS\_CHINA\_Production  
Database ID 202



### Disaster per ABS component

