

Weekly SLA Customer Report

Customer LSS_CHINA_Production
 Database ID 202



Harddisk Usage LSS_CHINA_PRD_LIAZCNABSAPPL1

| | Free disk space on C: (%) | Total disk space on C: (Gb) | Used disk space on C: (Gb) | Free disk space on D: (%) | Total disk space on D: (Gb) | Used disk space on D: (Gb) |
|-----------|---------------------------|-----------------------------|----------------------------|---------------------------|-----------------------------|----------------------------|
| 8/24/2024 | 30 | 127 | 88 | 73 | 64 | 17 |
| 8/23/2024 | 30 | 127 | 89 | 73 | 64 | 17 |
| 8/22/2024 | 30 | 127 | 89 | 73 | 64 | 17 |
| 8/21/2024 | 30 | 127 | 89 | 73 | 64 | 17 |
| 8/20/2024 | 30 | 127 | 88 | 73 | 64 | 17 |
| 8/19/2024 | 31 | 127 | 88 | 73 | 64 | 17 |
| 8/18/2024 | 31 | 127 | 88 | 73 | 64 | 17 |

Harddisk Usage LSS_CHINA_PRD_LIAZCNABSAPPL2

| | Free disk space on C: (%) | Total disk space on C: (Gb) | Used disk space on C: (Gb) | Free disk space on D: (%) | Total disk space on D: (Gb) | Used disk space on D: (Gb) |
|-----------|---------------------------|-----------------------------|----------------------------|---------------------------|-----------------------------|----------------------------|
| 8/24/2024 | 65 | 127 | 44 | 92 | 64 | 5 |
| 8/23/2024 | 64 | 127 | 45 | 92 | 64 | 5 |
| 8/22/2024 | 64 | 127 | 45 | 92 | 64 | 5 |
| 8/21/2024 | 64 | 127 | 45 | 92 | 64 | 5 |
| 8/20/2024 | 64 | 127 | 45 | 92 | 64 | 5 |
| 8/19/2024 | 64 | 127 | 45 | 92 | 64 | 5 |
| 8/18/2024 | 64 | 127 | 45 | 92 | 64 | 5 |

Weekly SLA Customer Report

Customer LSS_CHINA_Production
Database ID 202



Harddisk Usage LSS_CHINA_PRD_liazcne2VMProdABSSoluteDB1

| | Free disk space on / (%) | Total disk space on / (Gb) | Used disk space on / (Gb) | Free disk space on /boot (%) | Total disk space on /boot (Gb) | Used disk space on /boot (Gb) | Free disk space on /u01 (%) | Total disk space on /u01 (Gb) | Used disk space on /u01 (Gb) | Free disk space on /u02 (%) |
|-----------|--------------------------|----------------------------|---------------------------|------------------------------|--------------------------------|-------------------------------|-----------------------------|-------------------------------|------------------------------|-----------------------------|
| 8/24/2024 | 76 | 63 | 15 | 69 | 0 | 0 | 43 | 49 | 27 | 38 |
| 8/23/2024 | 76 | 63 | 15 | 69 | 0 | 0 | 43 | 49 | 27 | 38 |
| 8/22/2024 | 76 | 63 | 15 | 69 | 0 | 0 | 43 | 49 | 26 | 39 |
| 8/21/2024 | 76 | 63 | 15 | 69 | 0 | 0 | 43 | 49 | 26 | 41 |
| 8/20/2024 | 76 | 63 | 15 | 69 | 0 | 0 | 45 | 49 | 26 | 41 |
| 8/19/2024 | 76 | 63 | 15 | 69 | 0 | 0 | 45 | 49 | 25 | 41 |
| 8/18/2024 | 76 | 63 | 15 | 69 | 0 | 0 | 45 | 49 | 25 | 41 |

Harddisk Usage LSS_CHINA_PRD_liazcne2VMProdABSSoluteDB2

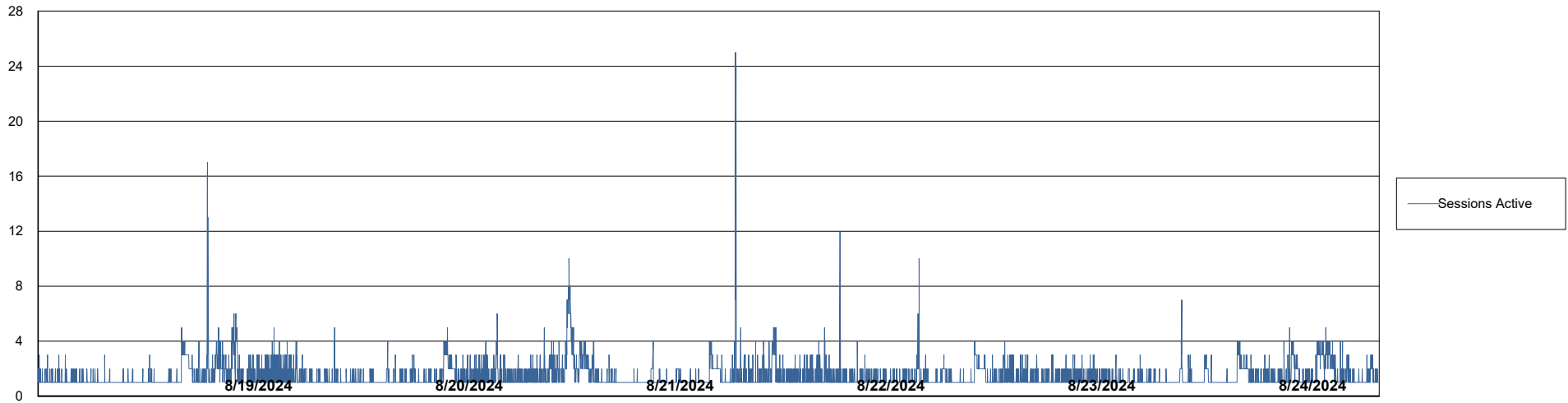
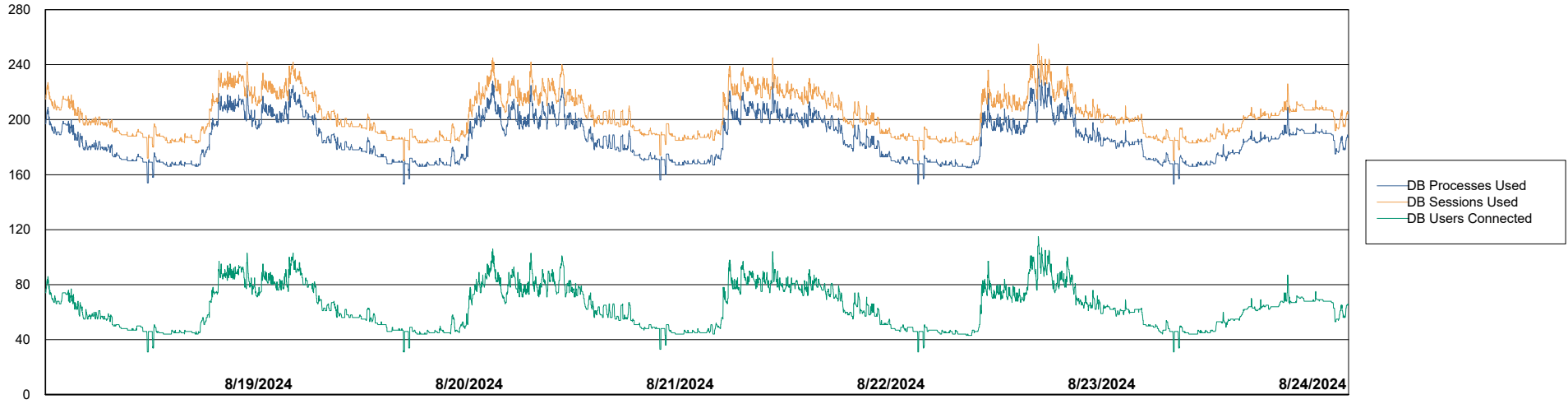
| | Free disk space on / (%) | Total disk space on / (Gb) | Used disk space on / (Gb) | Free disk space on /boot (%) | Total disk space on /boot (Gb) | Used disk space on /boot (Gb) | Free disk space on /u01 (%) | Total disk space on /u01 (Gb) | Used disk space on /u01 (Gb) | Free disk space on /u02 (%) |
|-----------|--------------------------|----------------------------|---------------------------|------------------------------|--------------------------------|-------------------------------|-----------------------------|-------------------------------|------------------------------|-----------------------------|
| 8/24/2024 | 89 | 63 | 7 | 69 | 0 | 0 | 71 | 49 | 13 | 41 |
| 8/23/2024 | 89 | 63 | 7 | 69 | 0 | 0 | 71 | 49 | 13 | 41 |
| 8/22/2024 | 89 | 63 | 7 | 69 | 0 | 0 | 71 | 49 | 13 | 43 |
| 8/21/2024 | 89 | 63 | 7 | 69 | 0 | 0 | 71 | 49 | 13 | 44 |
| 8/20/2024 | 89 | 63 | 7 | 69 | 0 | 0 | 71 | 49 | 13 | 44 |
| 8/19/2024 | 89 | 63 | 7 | 69 | 0 | 0 | 71 | 49 | 13 | 44 |
| 8/18/2024 | 89 | 63 | 7 | 69 | 0 | 0 | 71 | 49 | 13 | 44 |

Weekly SLA Customer Report

Customer LSS_CHINA_Production
Database ID 202



Database Performance LSS_CHINA_PRD_liazcne2VMProdABSSoluteDB1_ABS1



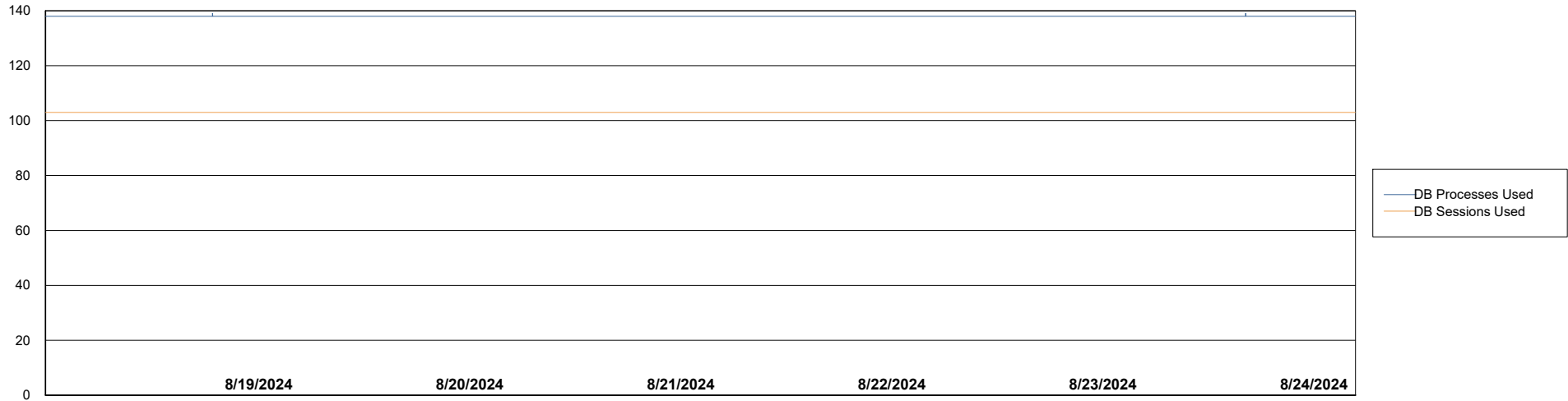
Weekly SLA Customer Report

Customer LSS_CHINA_Production
Database ID 202



Database Performance LSS_CHINA_PRD_liazcne2VMProdABSSoluteDB2_HSBABS1

DB Processes Max 0
DB Processes Max 4
DB Processes Max 1,000



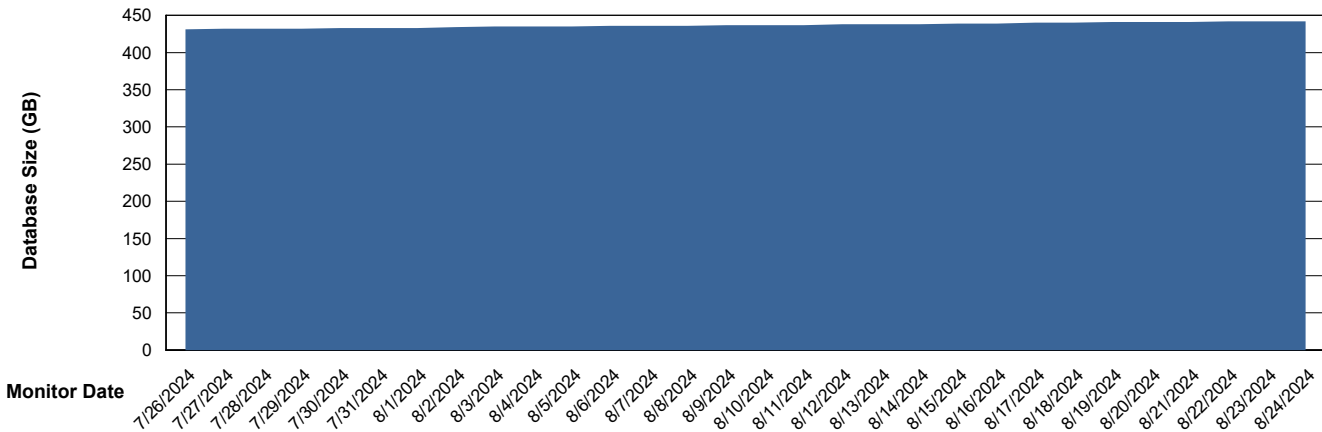
Weekly SLA Customer Report

Customer LSS_CHINA_Production
 Database ID 202



DATABASE SIZE LSS_CHINA_PRD_liazcne2VMProdABSSoluteDB1_ABS1

Database growth over last month



Database Tablespace LSS_CHINA_PRD_liazcne2VMProdABSSoluteDB1_ABS1

| Date | Tablespace Name | Filesize (Gb) | Usedsize (Gb) | Percentage free |
|-----------|-----------------|---------------|---------------|-----------------|
| 8/24/2024 | ABSDATA | 480 | 389 | 19 |
| | INDX | 42 | 31 | 26 |
| 8/23/2024 | ABSDATA | 480 | 389 | 19 |
| | INDX | 42 | 31 | 26 |
| 8/22/2024 | ABSDATA | 480 | 389 | 19 |
| | INDX | 42 | 31 | 26 |
| 8/21/2024 | ABSDATA | 455 | 389 | 15 |
| | INDX | 42 | 31 | 26 |
| 8/20/2024 | ABSDATA | 455 | 388 | 15 |
| | INDX | 42 | 31 | 26 |
| 8/19/2024 | ABSDATA | 455 | 388 | 15 |
| | INDX | 42 | 31 | 26 |
| 8/18/2024 | ABSDATA | 455 | 387 | 15 |
| | INDX | 42 | 31 | 26 |

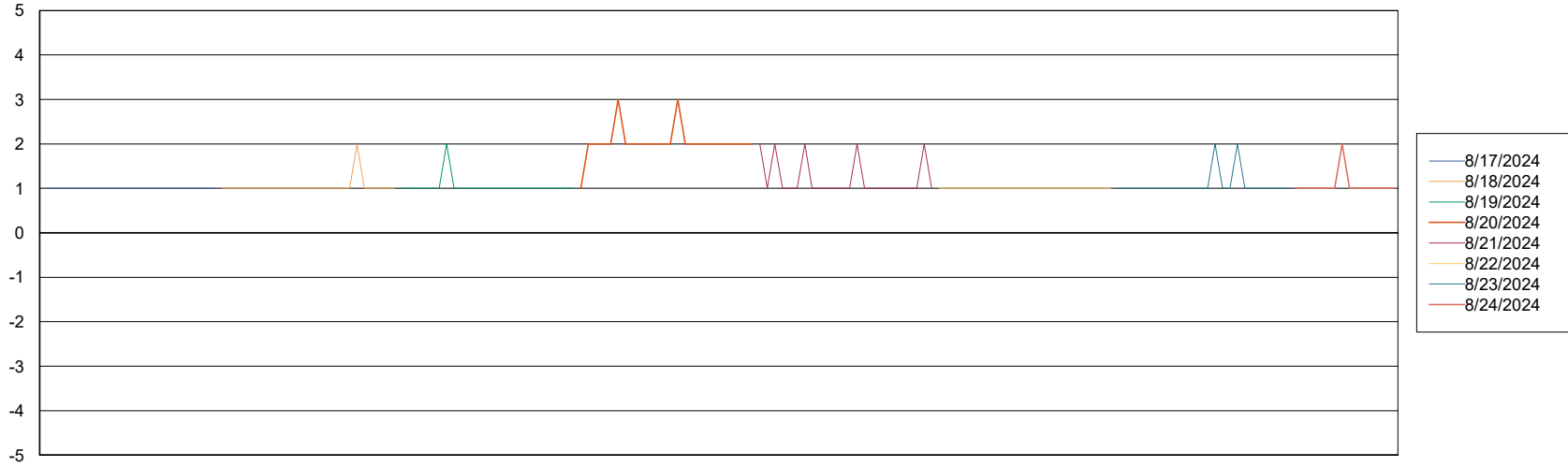
Weekly SLA Customer Report

Customer LSS_CHINA_Production
Database ID 202



Standby Database Health LSS_CHINA_Production

Recovery lag for last 7 days



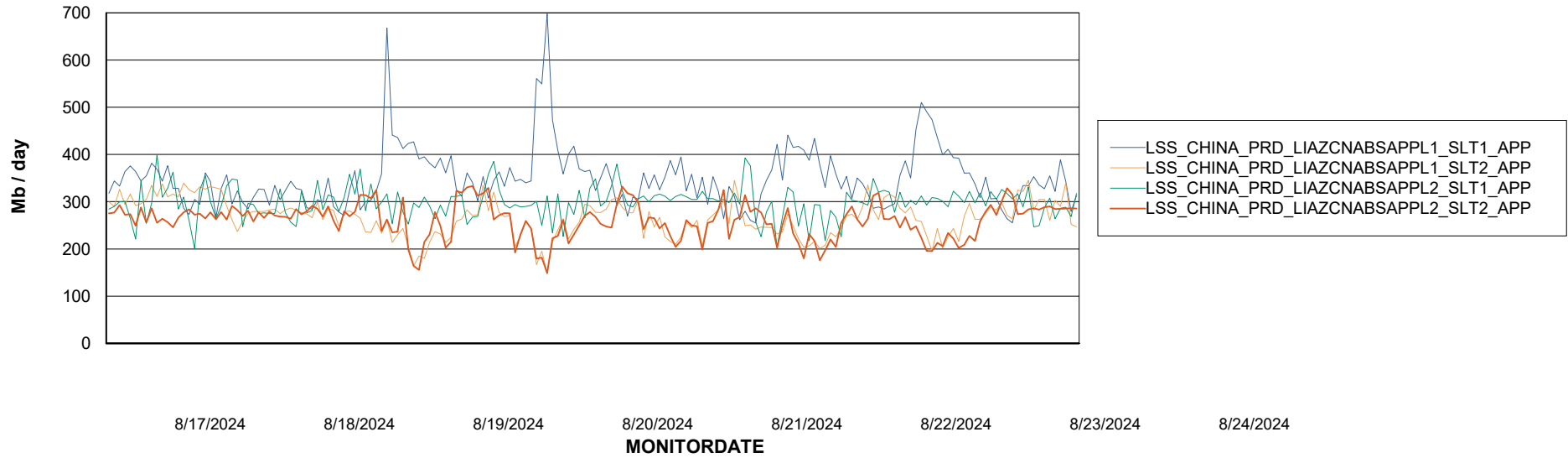
Weekly SLA Customer Report

Customer LSS_CHINA_Production
Database ID 202

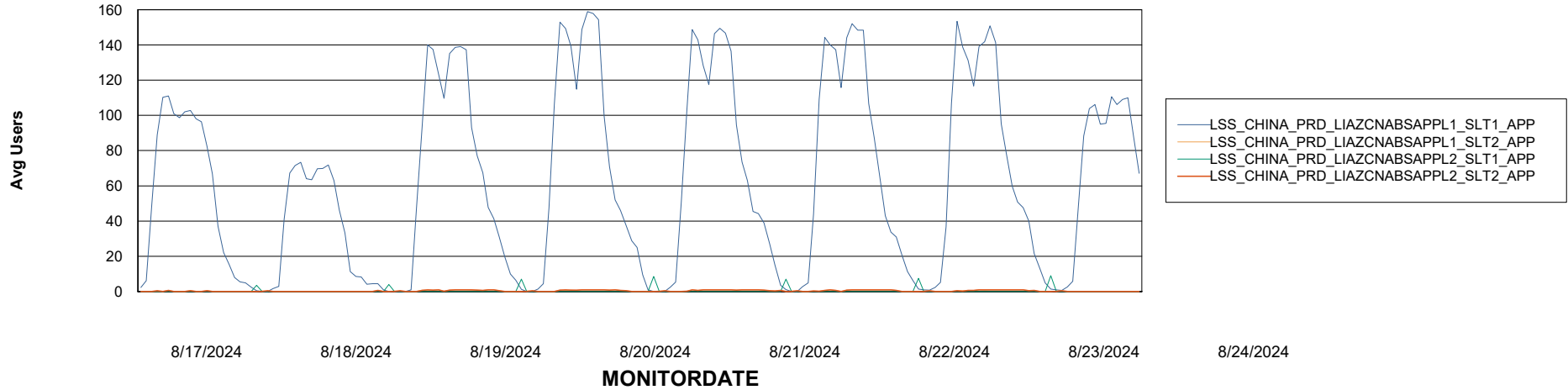


ABSSolute Application Server Services

Avg memory used per ABS Server Service



Avg users per day per ABS server



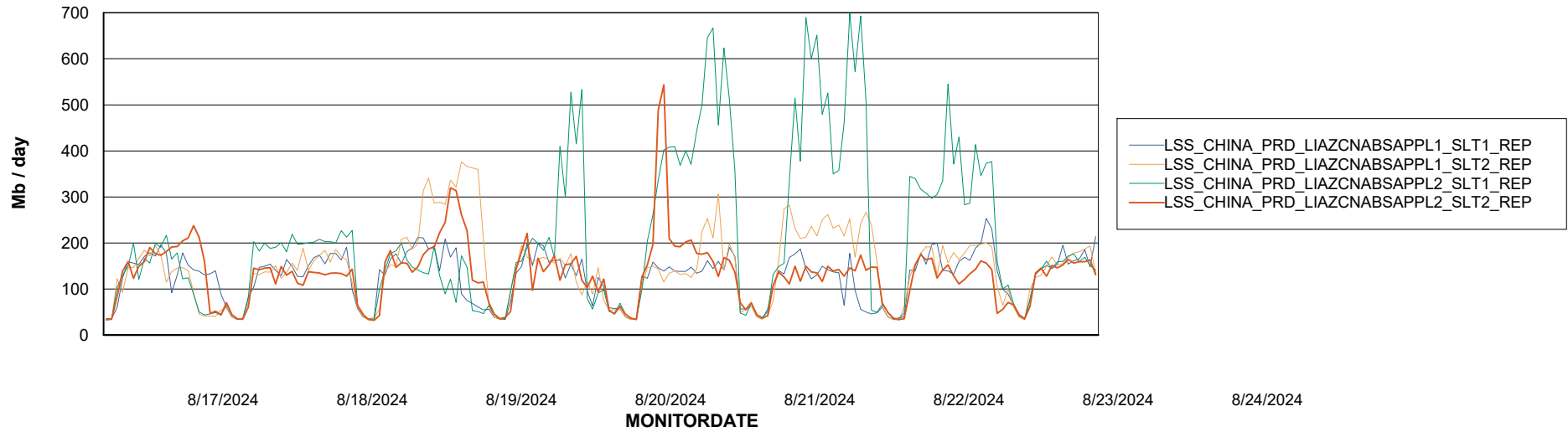
Weekly SLA Customer Report

Customer LSS_CHINA_Production
Database ID 202



ABSSolute Application ReportServer Services

Avg memory used per ReportServer Service



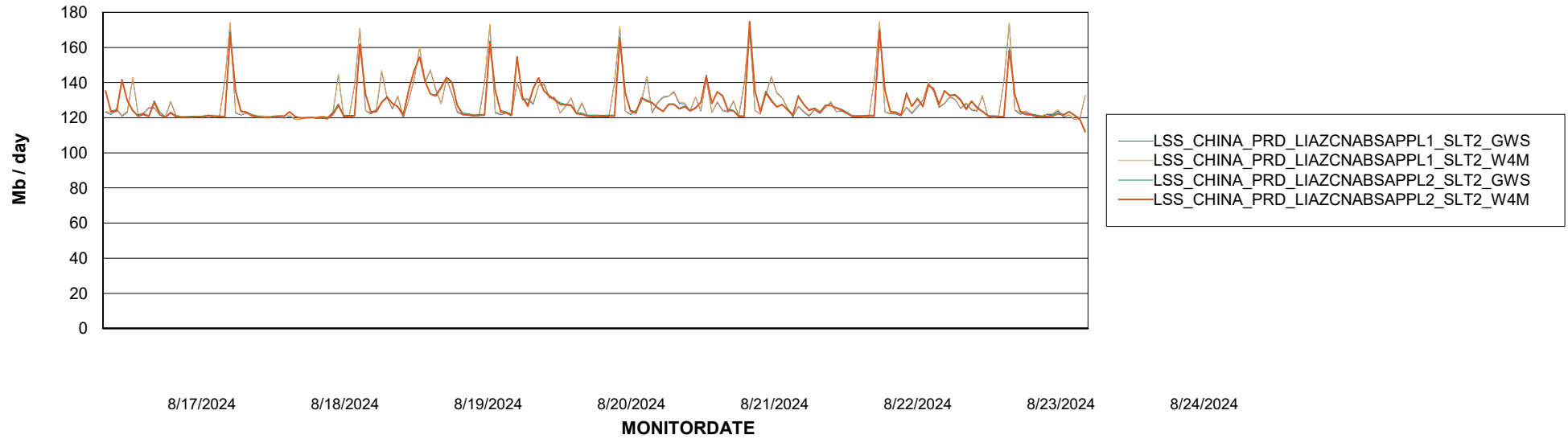
Weekly SLA Customer Report

Customer LSS_CHINA_Production
Database ID 202



ABSSolute Web Component Services

Avg memory used per ABS Web component

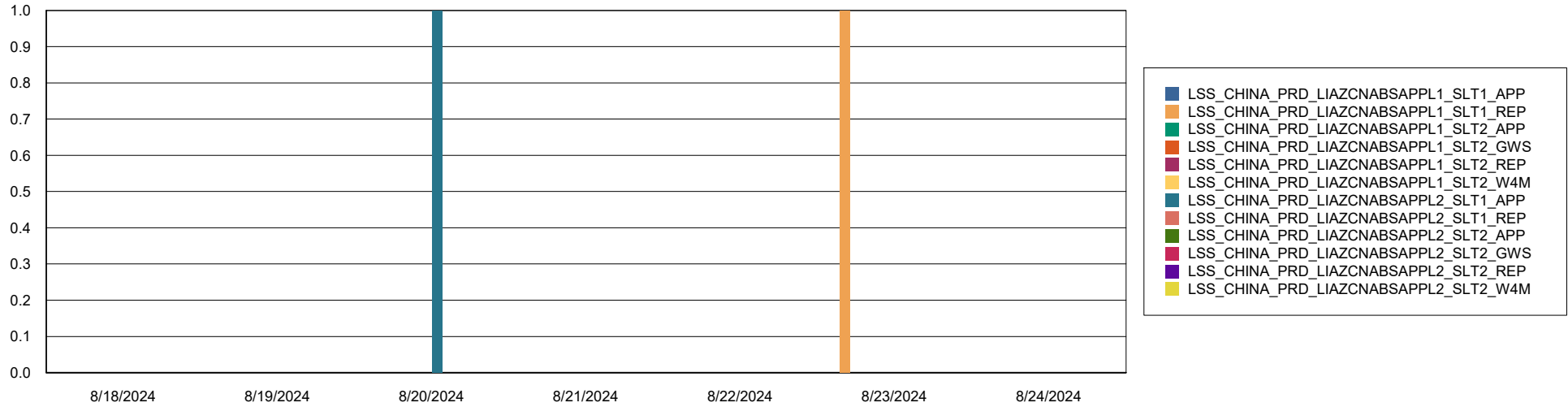


Weekly SLA Customer Report

Customer LSS_CHINA_Production
Database ID 202



Disaster per ABS component



- LSS_CHINA_PRD_LIAZCNABSAPPL1_SLT1_APP
- LSS_CHINA_PRD_LIAZCNABSAPPL1_SLT1_REP
- LSS_CHINA_PRD_LIAZCNABSAPPL1_SLT2_APP
- LSS_CHINA_PRD_LIAZCNABSAPPL1_SLT2_GWS
- LSS_CHINA_PRD_LIAZCNABSAPPL1_SLT2_REP
- LSS_CHINA_PRD_LIAZCNABSAPPL1_SLT2_W4M
- LSS_CHINA_PRD_LIAZCNABSAPPL2_SLT1_APP
- LSS_CHINA_PRD_LIAZCNABSAPPL2_SLT1_REP
- LSS_CHINA_PRD_LIAZCNABSAPPL2_SLT2_APP
- LSS_CHINA_PRD_LIAZCNABSAPPL2_SLT2_GWS
- LSS_CHINA_PRD_LIAZCNABSAPPL2_SLT2_REP
- LSS_CHINA_PRD_LIAZCNABSAPPL2_SLT2_W4M