

# Weekly SLA Customer Report

Customer LSS\_CHINA\_Production  
Database ID 202



## Harddisk Usage LSS\_CHINA\_PRD\_LIAZCNABSAPPL1

	Free disk space on C: (%)	Total disk space on C: (Gb)	Used disk space on C: (Gb)	Free disk space on D: (%)	Total disk space on D: (Gb)	Used disk space on D: (Gb)
6/8/2024	36	127	81	73	64	17
6/7/2024	36	127	81	73	64	17
6/6/2024	36	127	81	73	64	17
6/5/2024	36	127	81	73	64	17
6/4/2024	36	127	81	73	64	17
6/3/2024	36	127	81	73	64	17
6/2/2024	36	127	81	73	64	17

## Harddisk Usage LSS\_CHINA\_PRD\_LIAZCNABSAPPL2

	Free disk space on C: (%)	Total disk space on C: (Gb)	Used disk space on C: (Gb)	Free disk space on D: (%)	Total disk space on D: (Gb)	Used disk space on D: (Gb)
6/8/2024	69	127	39	92	64	5
6/7/2024	69	127	39	92	64	5
6/6/2024	69	127	39	92	64	5
6/5/2024	70	127	39	92	64	5
6/4/2024	70	127	38	92	64	5
6/3/2024	70	127	38	92	64	5
6/2/2024	70	127	39	92	64	5

# Weekly SLA Customer Report

Customer LSS\_CHINA\_Production  
Database ID 202



## Harddisk Usage LSS\_CHINA\_PRD\_liazcne2VMProdABSSoluteDB1

	Free disk space on / (%)	Total disk space on / (Gb)	Used disk space on / (Gb)	Free disk space on /boot (%)	Total disk space on /boot (Gb)	Used disk space on /boot (Gb)	Free disk space on /u01 (%)	Total disk space on /u01 (Gb)	Used disk space on /u01 (Gb)	Free disk space on /u02 (%)
6/8/2024	77	63	15	69	0	0	43	49	27	44
6/7/2024	77	63	15	69	0	0	44	49	26	44
6/6/2024	77	63	15	69	0	0	45	49	26	44
6/5/2024	77	63	15	69	0	0	45	49	26	44
6/4/2024	77	63	15	69	0	0	45	49	26	44
6/3/2024	77	63	15	69	0	0	45	49	25	44
6/2/2024	77	63	15	69	0	0	45	49	25	44

## Harddisk Usage LSS\_CHINA\_PRD\_liazcne2VMProdABSSoluteDB2

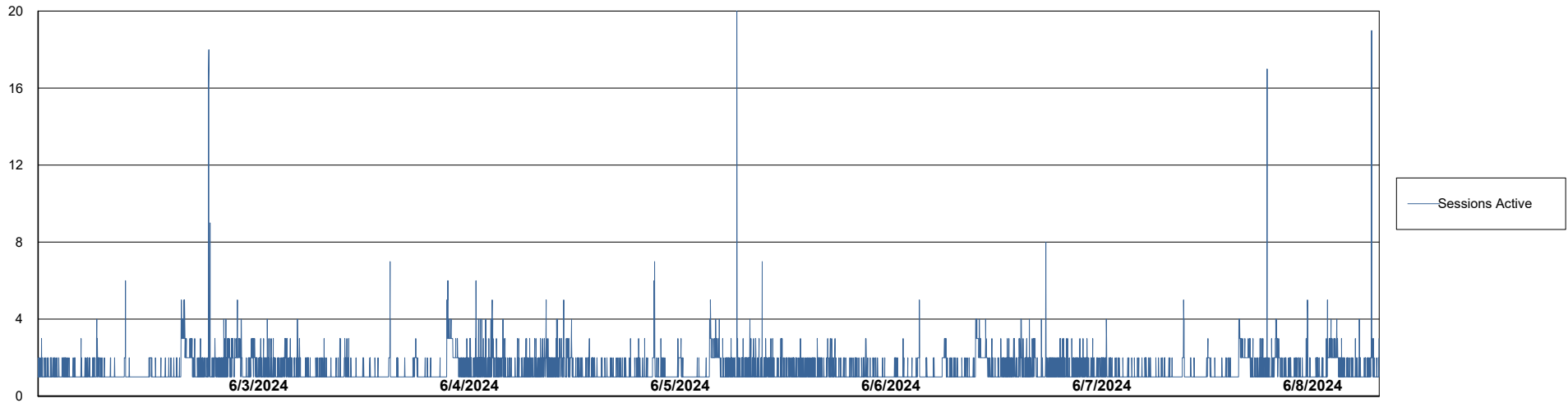
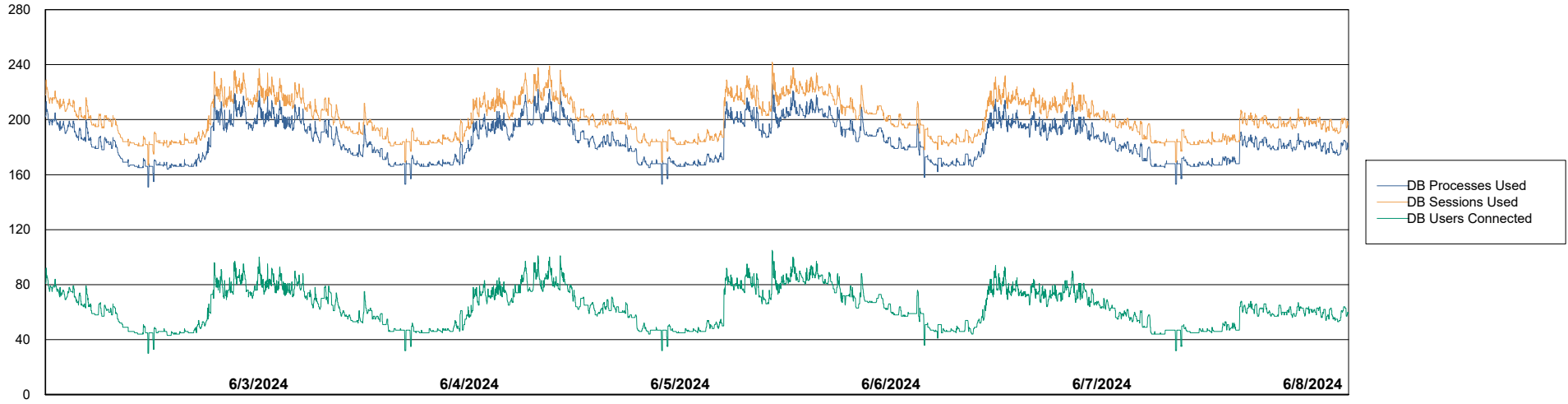
	Free disk space on / (%)	Total disk space on / (Gb)	Used disk space on / (Gb)	Free disk space on /boot (%)	Total disk space on /boot (Gb)	Used disk space on /boot (Gb)	Free disk space on /u01 (%)	Total disk space on /u01 (Gb)	Used disk space on /u01 (Gb)	Free disk space on /u02 (%)
6/8/2024	89	63	7	69	0	0	71	49	13	47
6/7/2024	89	63	7	69	0	0	71	49	13	47
6/6/2024	89	63	7	69	0	0	71	49	13	47
6/5/2024	89	63	7	69	0	0	71	49	13	47
6/4/2024	89	63	7	69	0	0	71	49	13	47
6/3/2024	89	63	7	69	0	0	71	49	13	47
6/2/2024	89	63	7	69	0	0	71	49	13	47

# Weekly SLA Customer Report

Customer LSS\_CHINA\_Production  
Database ID 202



## Database Performance LSS\_CHINA\_PRD\_liazcne2VMPProdABSSoluteDB1\_ABS1



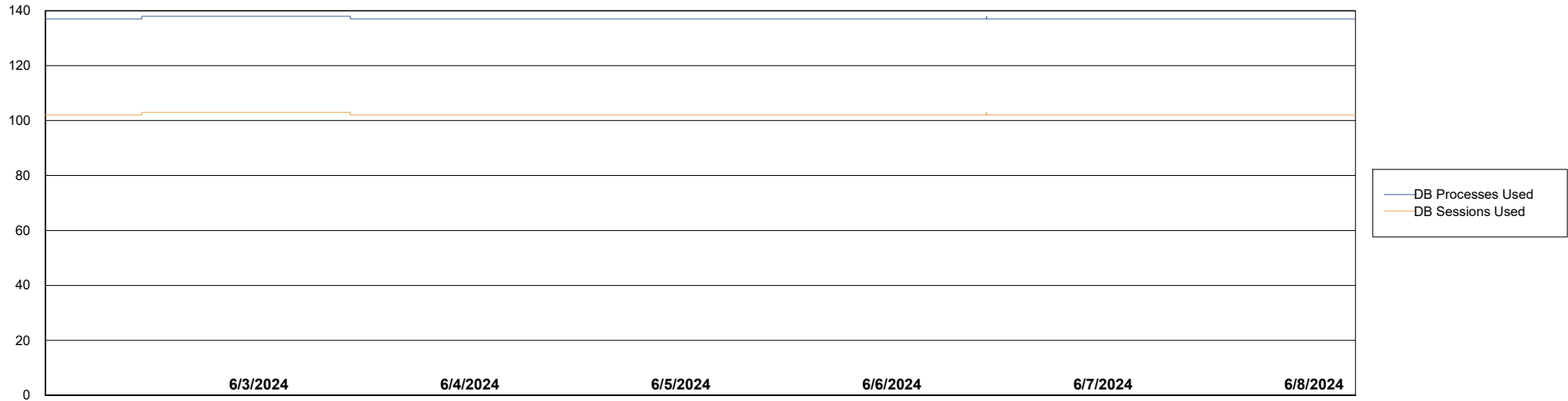
# Weekly SLA Customer Report

Customer LSS\_CHINA\_Production  
Database ID 202



Database Performance LSS\_CHINA\_PRD\_liazcne2VMProdABSSoluteDB2\_HSBABS1

DB Processes Max 4  
DB Processes Max 0  
DB Processes Max 1,000



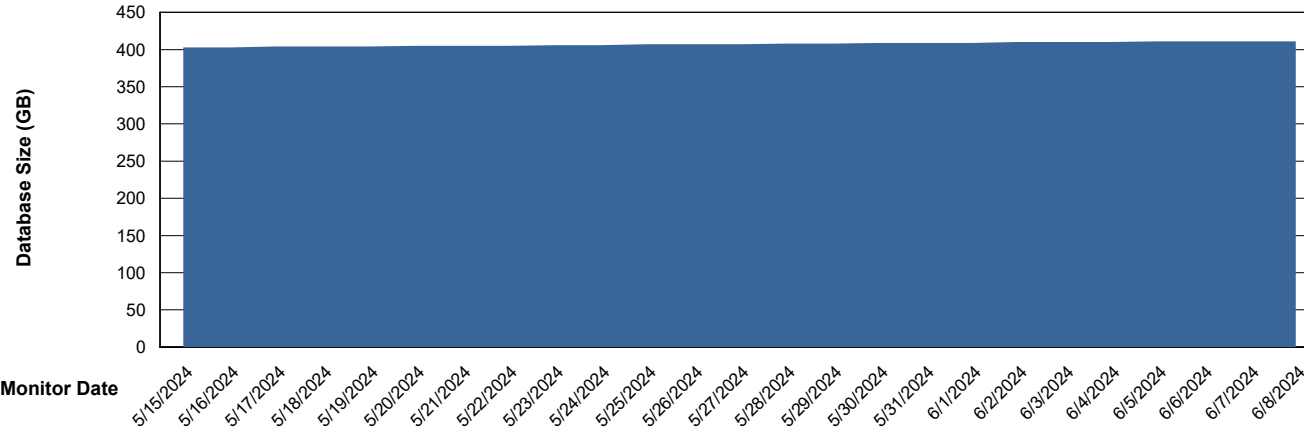
# Weekly SLA Customer Report

Customer LSS\_CHINA\_Production  
 Database ID 202



DATABASE SIZE LSS\_CHINA\_PRD\_liazcne2VMProdABSSoluteDB1\_ABS1

## Database growth over last month



Database Tablespace LSS\_CHINA\_PRD\_liazcne2VMProdABSSoluteDB1\_ABS1

Date	Tablespace Name	Filesize (Gb)	Usedsize (Gb)	Percentage free
6/8/2024	ABSDATA	431	361	16
	INDX	40	30	25
6/7/2024	ABSDATA	431	361	16
	INDX	40	30	25
6/6/2024	ABSDATA	431	360	16
	INDX	40	30	25
6/5/2024	ABSDATA	431	360	17
	INDX	40	30	25
6/4/2024	ABSDATA	431	360	17
	INDX	40	30	25
6/3/2024	ABSDATA	431	359	17
	INDX	40	30	25
6/2/2024	ABSDATA	431	359	17
	INDX	40	30	25

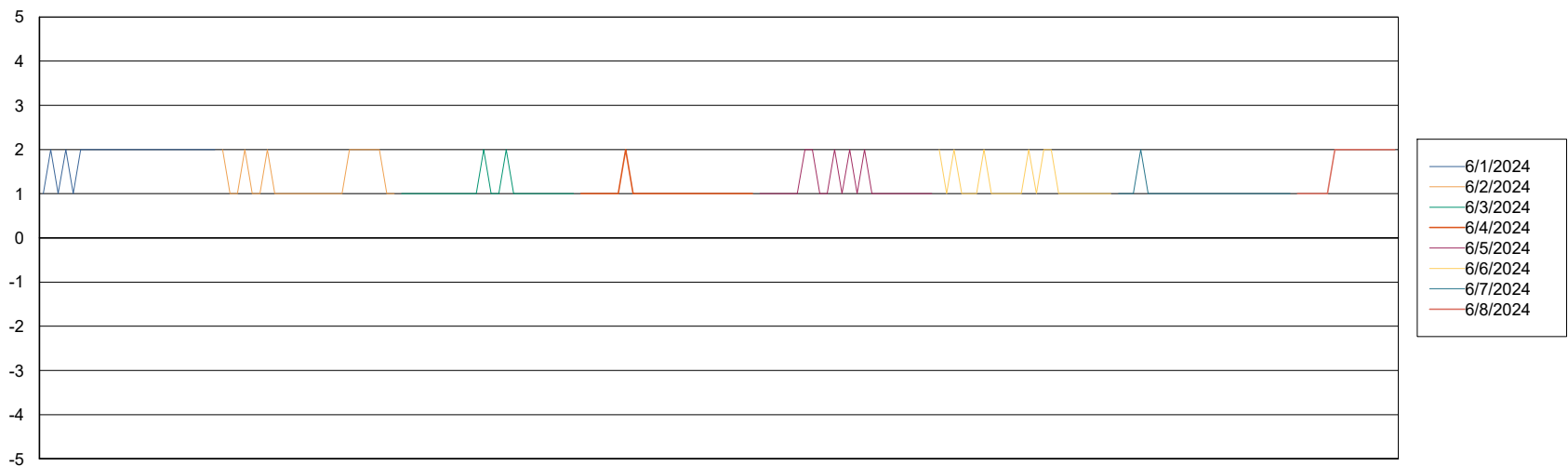
# Weekly SLA Customer Report

Customer LSS\_CHINA\_Production  
Database ID 202



Standby Database Health LSS\_CHINA\_Production

### Recovery lag for last 7 days



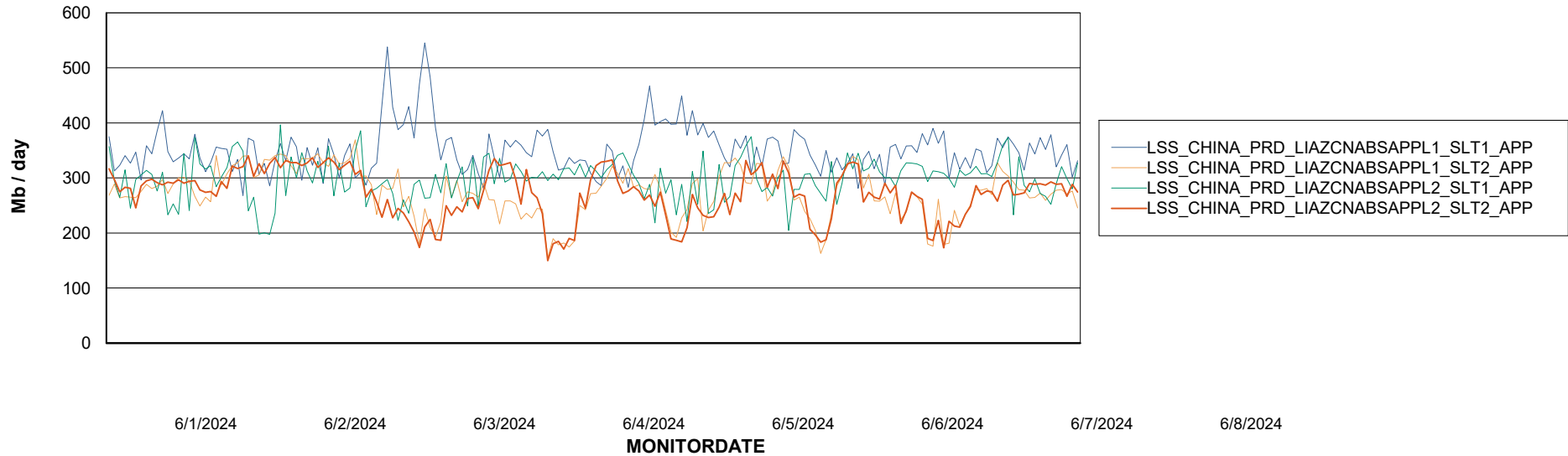
# Weekly SLA Customer Report

Customer LSS\_CHINA\_Production  
Database ID 202

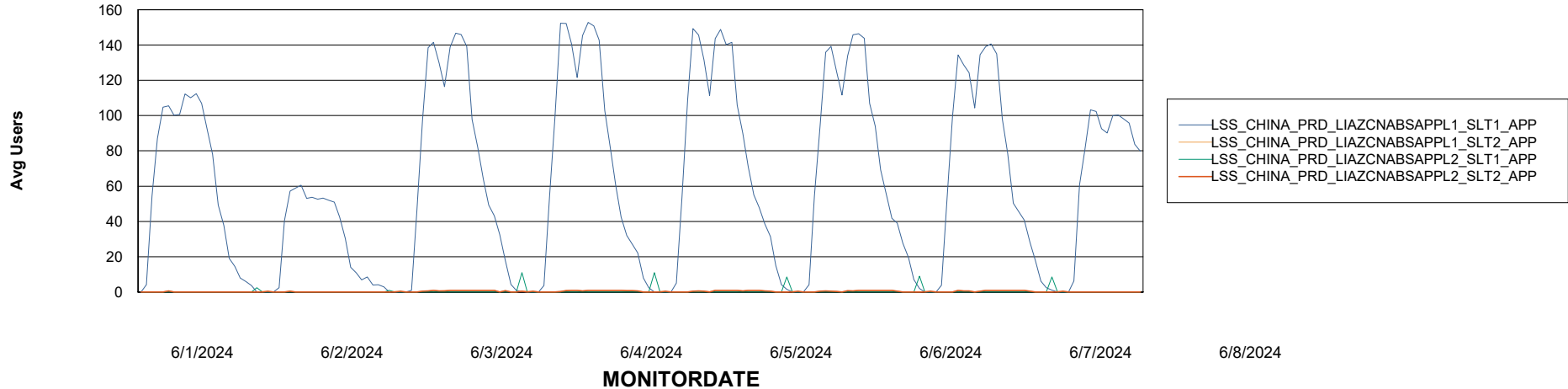


## ABSSolute Application Server Services

### Avg memory used per ABS Server Service



### Avg users per day per ABS server



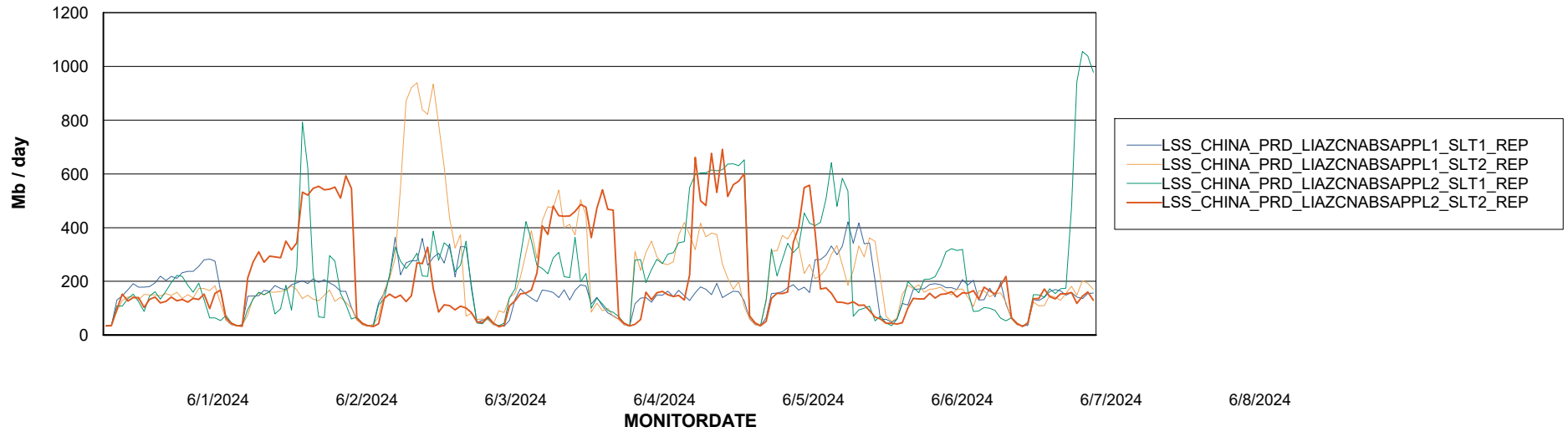
# Weekly SLA Customer Report

Customer LSS\_CHINA\_Production  
Database ID 202



## ABSSolute Application ReportServer Services

### Avg memory used per ReportServer Service



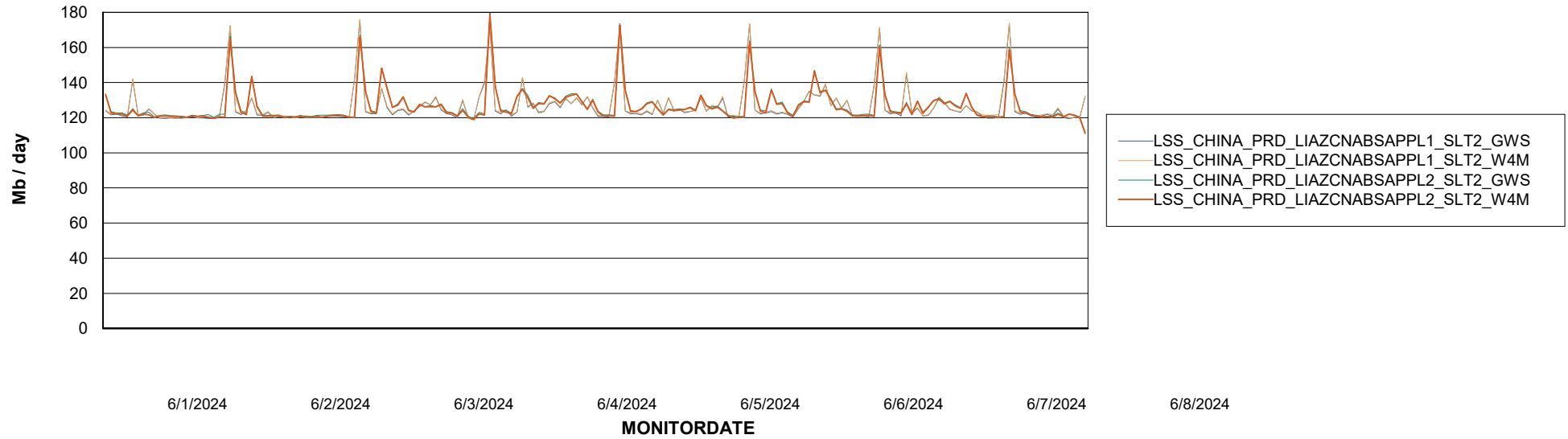
# Weekly SLA Customer Report

Customer LSS\_CHINA\_Production  
Database ID 202



## ABSSolute Web Component Services

### Avg memory used per ABS Web component

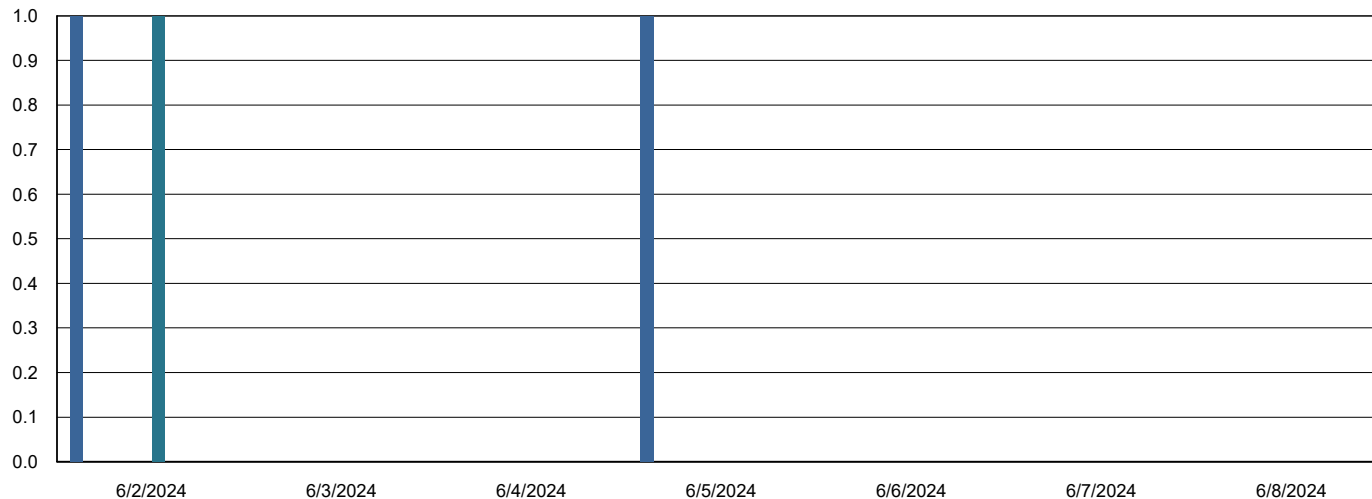


# Weekly SLA Customer Report

Customer LSS\_CHINA\_Production  
Database ID 202



## Disaster per ABS component



- LSS\_CHINA\_PRD\_LIAZCNABSAPPL1\_SLT1\_APP
- LSS\_CHINA\_PRD\_LIAZCNABSAPPL1\_SLT1\_REP
- LSS\_CHINA\_PRD\_LIAZCNABSAPPL1\_SLT2\_APP
- LSS\_CHINA\_PRD\_LIAZCNABSAPPL1\_SLT2\_GWS
- LSS\_CHINA\_PRD\_LIAZCNABSAPPL1\_SLT2\_REP
- LSS\_CHINA\_PRD\_LIAZCNABSAPPL1\_SLT2\_W4M
- LSS\_CHINA\_PRD\_LIAZCNABSAPPL2\_SLT1\_APP
- LSS\_CHINA\_PRD\_LIAZCNABSAPPL2\_SLT1\_REP
- LSS\_CHINA\_PRD\_LIAZCNABSAPPL2\_SLT2\_APP
- LSS\_CHINA\_PRD\_LIAZCNABSAPPL2\_SLT2\_GWS
- LSS\_CHINA\_PRD\_LIAZCNABSAPPL2\_SLT2\_REP
- LSS\_CHINA\_PRD\_LIAZCNABSAPPL2\_SLT2\_W4M