

# Weekly SLA Customer Report

Customer NOA\_Production (24/7)  
 Database ID 116



Harddisk Usage NOA\_PRD\_NOVOBI

	Free disk space on C: (%)	Total disk space on C: (Gb)	Used disk space on C: (Gb)	Free disk space on D: (%)	Total disk space on D: (Gb)	Used disk space on D: (Gb)	Free disk space on E: (%)	Total disk space on E: (Gb)	Used disk space on E: (Gb)	Free disk space on H: (%)
3/2/2024	31	97	67	58	500	208	72	300	85	53
3/1/2024	31	97	68	59	500	207	72	300	85	53
2/29/2024	30	97	68	59	500	207	72	300	85	53
2/28/2024	30	97	68	58	500	208	72	300	85	53
2/27/2024	31	97	67	59	500	207	72	300	85	53
2/26/2024	31	97	67	59	500	207	72	300	85	53
2/25/2024	31	97	67	59	500	207	72	300	85	53

Harddisk Usage NOA\_PRD\_NovoABS01

	Free disk space on C: (%)	Total disk space on C: (Gb)	Used disk space on C: (Gb)	Free disk space on F: (%)	Total disk space on F: (Gb)	Used disk space on F: (Gb)	Free disk space on G: (%)	Total disk space on G: (Gb)	Used disk space on G: (Gb)
3/2/2024	47	100	53	15	800	680	89	400	45
3/1/2024	47	100	52	19	800	652	88	400	49
2/29/2024	47	100	52	19	800	652	86	400	55
2/28/2024	47	100	52	19	800	652	85	400	59
2/27/2024	47	100	52	16	800	671	84	400	65
2/26/2024	48	100	52	19	800	651	83	400	69
2/25/2024	47	100	52	19	800	651	83	400	69

# Weekly SLA Customer Report

Customer NOA\_Production (24/7)  
 Database ID 116



Harddisk Usage NOA\_PRD\_NovoABS03

	Free disk space on C: (%)	Total disk space on C: (Gb)	Used disk space on C: (Gb)	Free disk space on F: (%)	Total disk space on F: (Gb)	Used disk space on F: (Gb)	Free disk space on G: (%)	Total disk space on G: (Gb)	Used disk space on G: (Gb)
3/2/2024	65	279	96	37	838	525	92	559	45
3/1/2024	66	279	96	37	838	525	91	559	49
2/29/2024	66	279	96	37	838	525	90	559	55
2/28/2024	66	279	96	37	838	525	89	559	59
2/27/2024	66	279	96	37	838	525	88	559	65
2/26/2024	66	279	96	37	838	525	88	559	69
2/25/2024	66	279	96	37	838	525	88	559	69

Harddisk Usage NOA\_PRD\_NovoApps01

	Free disk space on C: (%)	Total disk space on C: (Gb)	Used disk space on C: (Gb)
3/2/2024	57	100	43
3/1/2024	57	100	42
2/29/2024	57	100	43
2/28/2024	57	100	43
2/27/2024	57	100	43
2/26/2024	57	100	43
2/25/2024	57	100	43

# Weekly SLA Customer Report

Customer NOA\_Production (24/7)  
 Database ID 116



Harddisk Usage NOA\_PRD\_NovoApps02

	Free disk space on C: (%)	Total disk space on C: (Gb)	Used disk space on C: (Gb)
3/2/2024	65	100	35
3/1/2024	65	100	35
2/29/2024	65	100	35
2/28/2024	65	100	35
2/27/2024	65	100	35
2/26/2024	65	100	35
2/25/2024	65	100	35

Harddisk Usage NOA\_PRD\_NovoLink

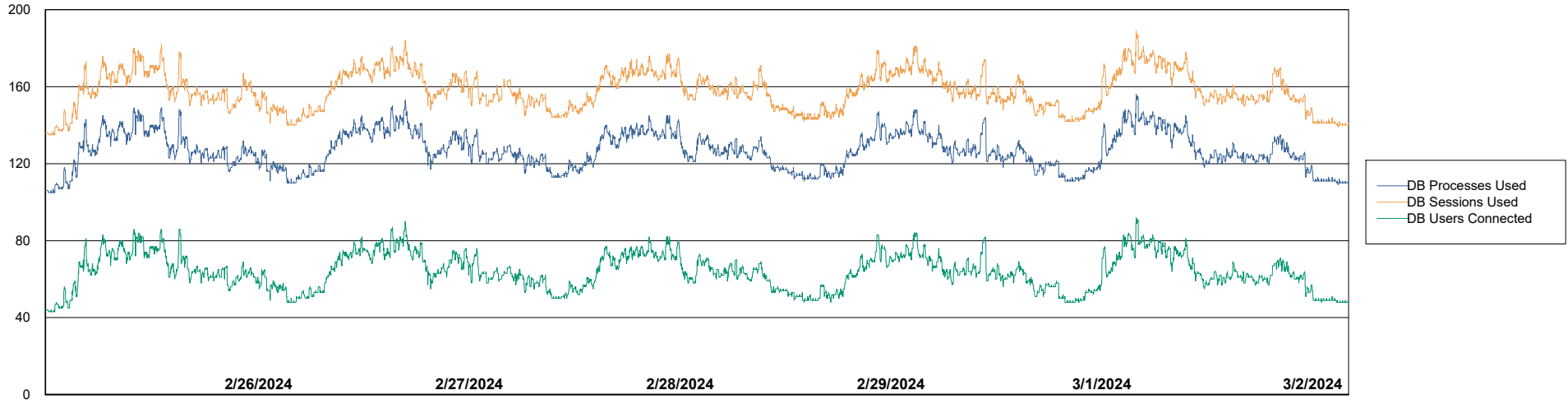
	Free disk space on C: (%)	Total disk space on C: (Gb)	Used disk space on C: (Gb)
3/2/2024	69	100	31
3/1/2024	69	100	31
2/29/2024	69	100	31
2/28/2024	69	100	31
2/27/2024	69	100	31
2/26/2024	69	100	31
2/25/2024	69	100	31

# Weekly SLA Customer Report

Customer NOA\_Production (24/7)  
Database ID 116



## Database Performance NOA\_PRD\_NovoABS01\_ABS1



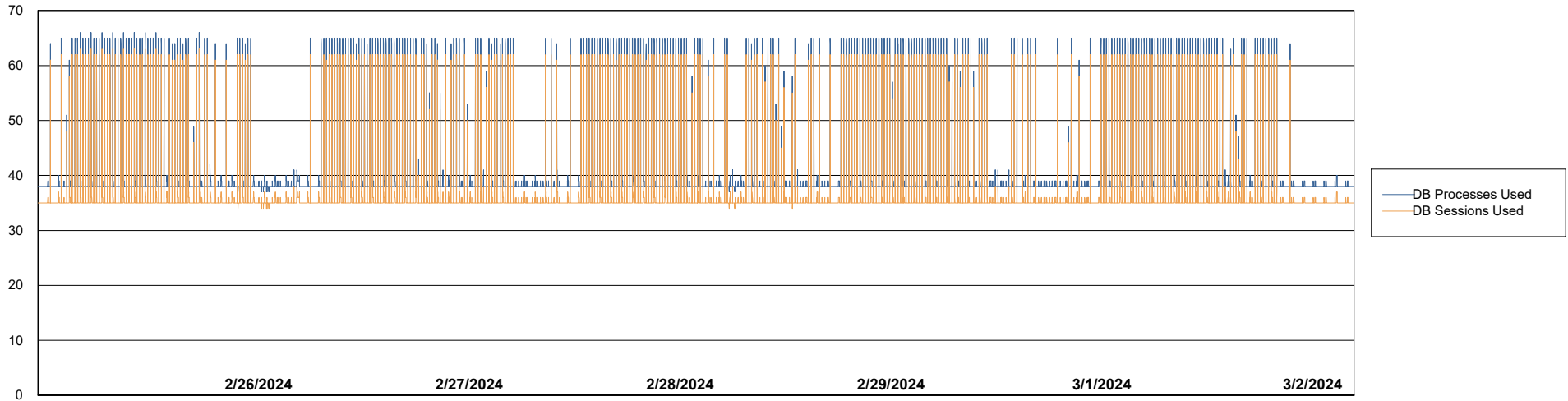
# Weekly SLA Customer Report

Customer NOA\_Production (24/7)  
Database ID 116



Database Performance NOA\_PRD\_NovoABS03\_HSBABS1

DB Processes Max 300

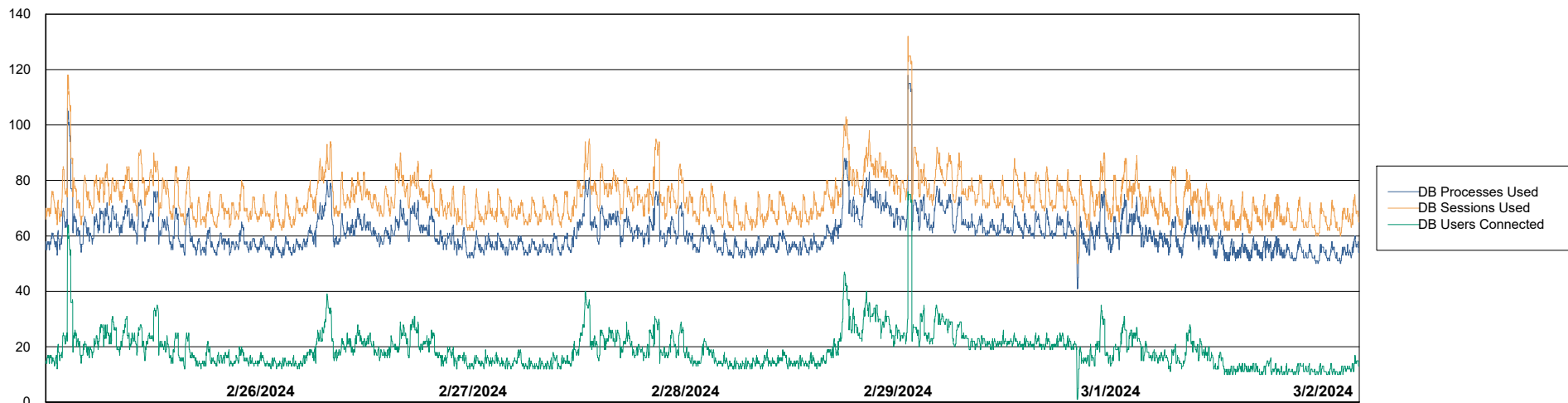


# Weekly SLA Customer Report

Customer NOA\_Production (24/7)  
Database ID 116



## Database Performance NOA\_PRD\_NOVOBI\_ABS1



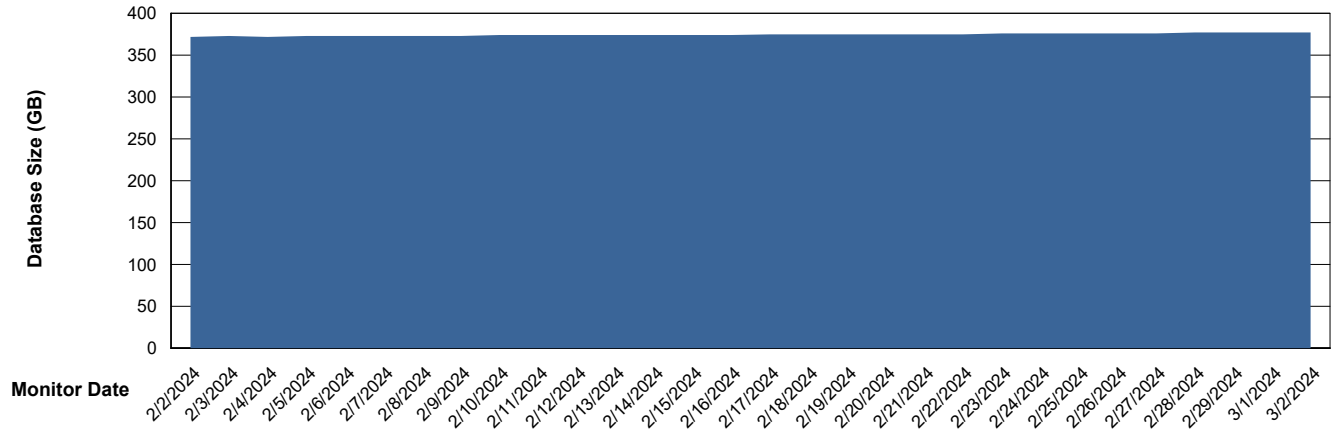
# Weekly SLA Customer Report

Customer NOA\_Production (24/7)  
Database ID 116



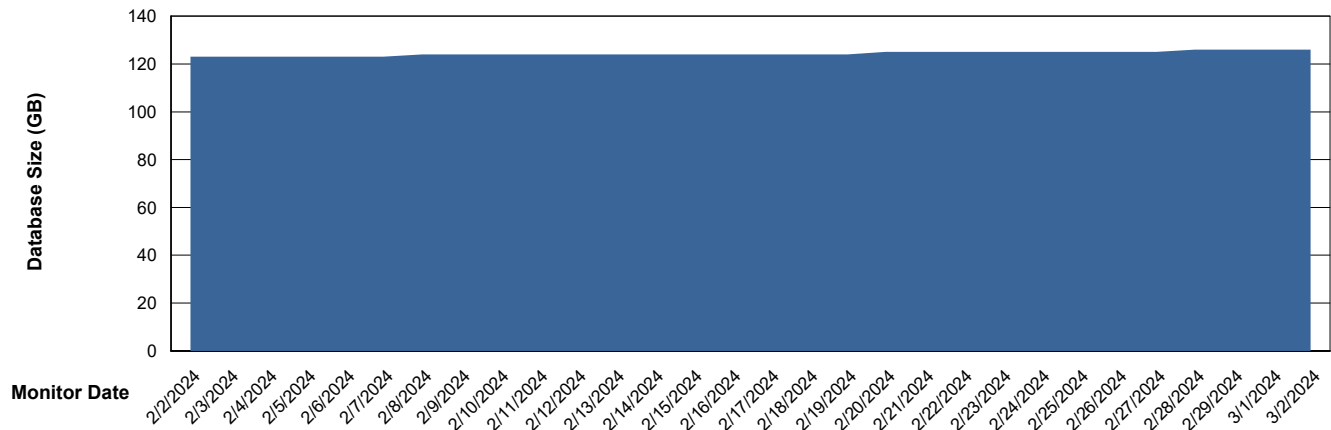
DATABASE SIZE NOA\_PRD\_NovoABS01\_ABS1

### Database growth over last month



DATABASE SIZE NOA\_PRD\_NOVOBI\_ABS1

### Database growth over last month



# Weekly SLA Customer Report

Customer NOA\_Production (24/7)  
 Database ID 116



Database Tablespace NOA\_PRD\_NovoABS01\_ABS1

Date	Tablespace Name	Filesize (Gb)	Usedsize (Gb)	Percentage free
3/2/2024	ABSDATA	183	137	25
	INDX	273	227	17
3/1/2024	ABSDATA	183	137	25
	INDX	273	227	17
2/29/2024	ABSDATA	183	137	25
	INDX	273	227	17
2/28/2024	ABSDATA	183	137	25
	INDX	273	227	17
2/27/2024	ABSDATA	183	137	25
	INDX	273	227	17
2/26/2024	ABSDATA	183	137	25
	INDX	273	226	17
2/25/2024	ABSDATA	183	137	25
	INDX	273	226	17

# Weekly SLA Customer Report

Customer NOA\_Production (24/7)  
 Database ID 116



Database Tablespace NOA\_PRD\_NOVOBI\_ABS1

Date	Tablespace Name	Filesize (Gb)	Usedsize (Gb)	Percentage free
3/2/2024	ABSDATA	64	50	21
	INDX	88	72	18
3/1/2024	ABSDATA	64	50	22
	INDX	88	72	18
2/29/2024	ABSDATA	64	50	22
	INDX	88	72	18
2/28/2024	ABSDATA	64	50	22
	INDX	88	72	18
2/27/2024	ABSDATA	64	50	22
	INDX	88	71	18
2/26/2024	ABSDATA	64	50	22
	INDX	88	71	19
2/25/2024	ABSDATA	64	50	22
	INDX	88	71	19

BI Status and last ETL error for NOA\_PRD\_NOVOBI\_ABS1

	Mon 26/2/2024	Tue 27/2/2024	Wed 28/2/2024	Thu 29/2/2024	Fri 1/3/2024	Sat 2/3/2024
<b>ABS DataWarehouse ETL Health</b>	OK	OK	OK	OK	OK	OK
<b>ABS DWHStaging ETL Health</b>	OK	OK	OK	OK	OK	OK

## Weekly SLA Customer Report

Customer NOA\_Production (24/7)  
Database ID 116



BI last ETL error for	NOA_PRD_NOVOBI_ABS1
-----------------------	---------------------

Mon, 26-02-2024	None
Wed, 28-02-2024	None
Wed, 28-02-2024	None
Sun, 25-02-2024	None
Sat, 2-03-2024	None
Mon, 26-02-2024	None
Tue, 27-02-2024	None
Fri, 1-03-2024	None
Sat, 2-03-2024	None
Fri, 1-03-2024	None
Sun, 25-02-2024	None
Thu, 29-02-2024	None
Tue, 27-02-2024	None
Thu, 29-02-2024	None

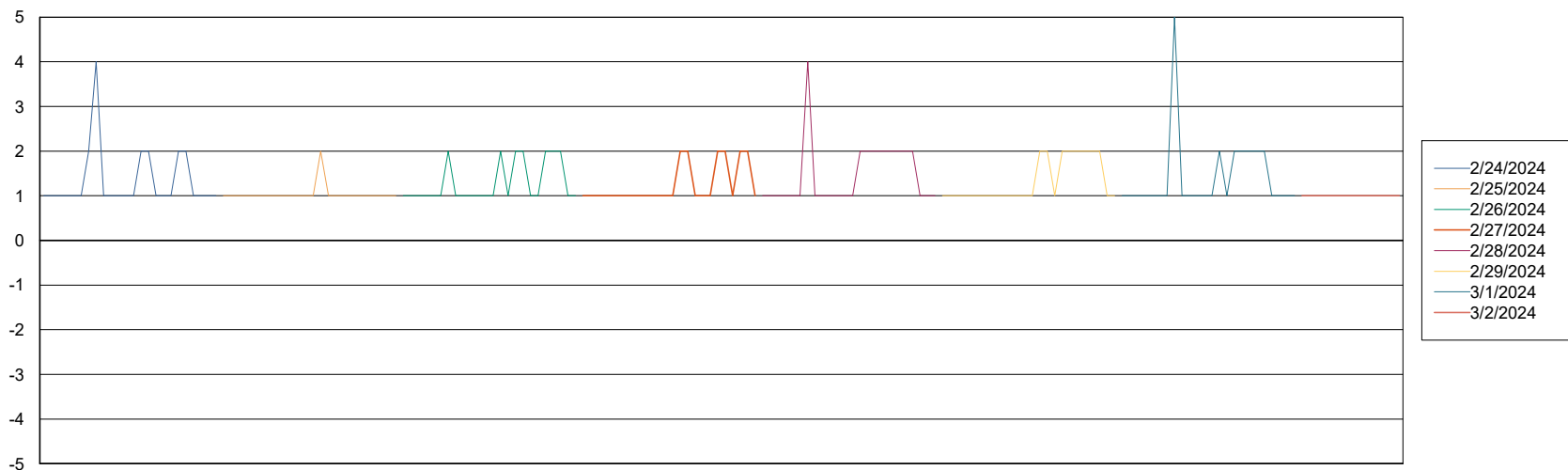
# Weekly SLA Customer Report

Customer NOA\_Production (24/7)  
Database ID 116



Standby Database Health NOA\_Production (24/7)

### Recovery lag for last 7 days



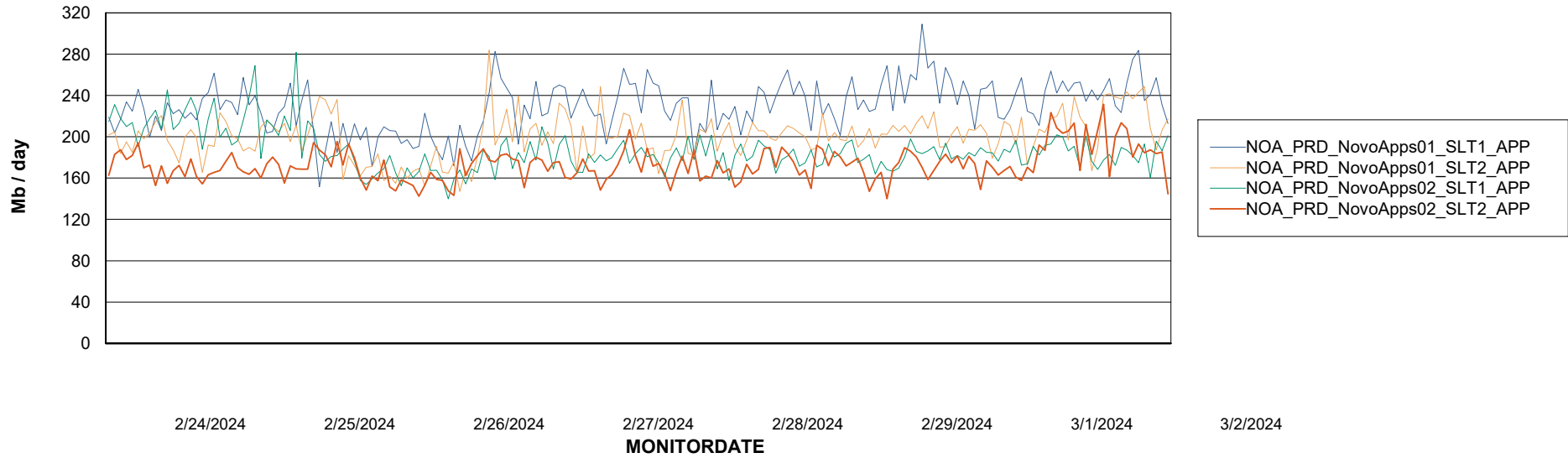
# Weekly SLA Customer Report

Customer NOA\_Production (24/7)  
Database ID 116

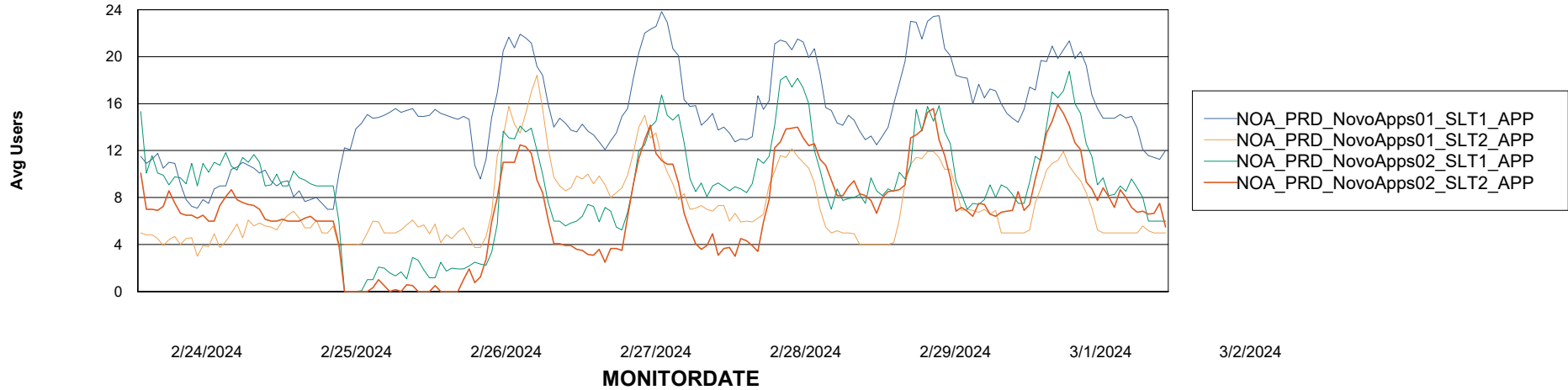


## ABSSolute Application Server Services

### Avg memory used per ABS Server Service



### Avg users per day per ABS server



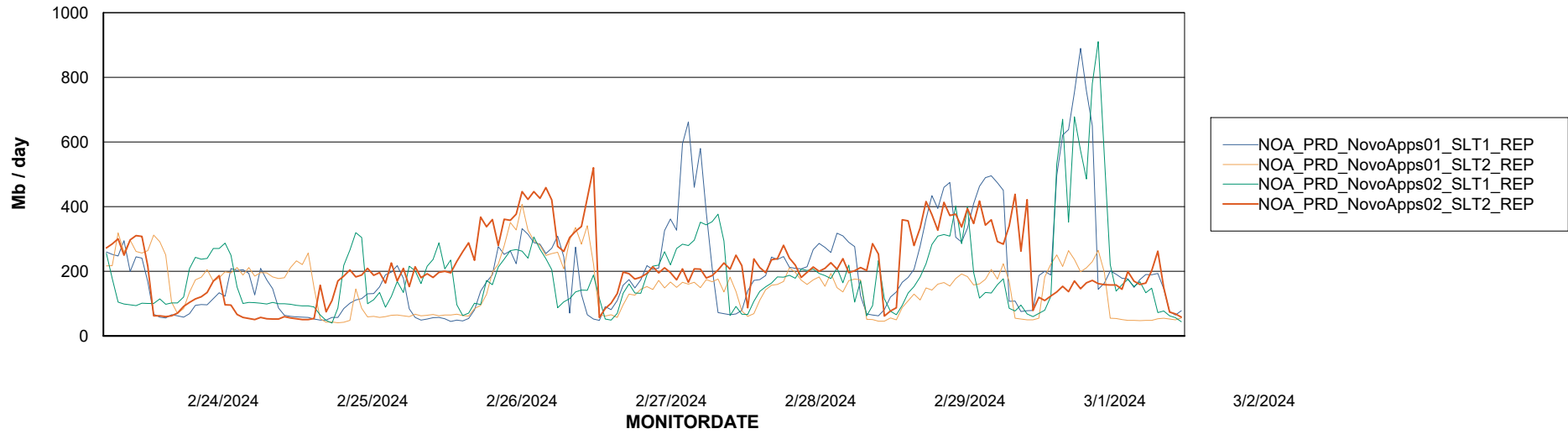
# Weekly SLA Customer Report

Customer NOA\_Production (24/7)  
Database ID 116



## ABSSolute Application ReportServer Services

### Avg memory used per ReportServer Service



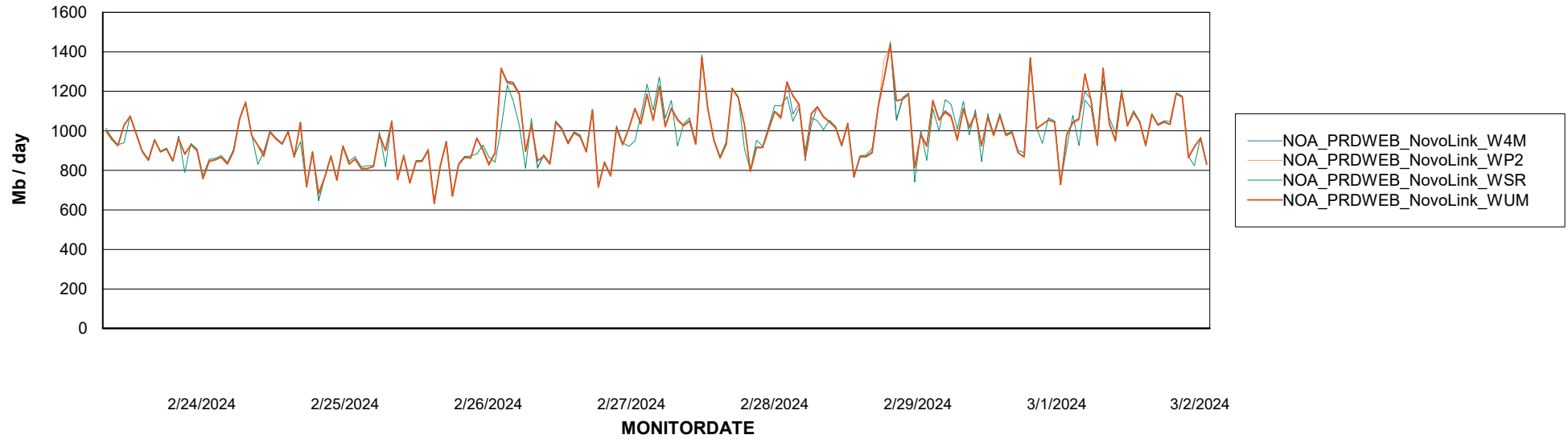
# Weekly SLA Customer Report

Customer NOA\_Production (24/7)  
Database ID 116



## ABSSolute Web Component Services

### Avg memory used per ABS Web component



# Weekly SLA Customer Report

Customer NOA\_Production (24/7)  
Database ID 116



## Disaster per ABS component

