

# Weekly SLA Customer Report

Customer KLH\_Production (24/7)  
 Database ID 139



Harddisk Usage KLH\_PRD\_SRSAPP01

	Free disk space on / (%)	Total disk space on / (Gb)	Used disk space on / (Gb)	Free disk space on /abs (%)	Total disk space on /abs (Gb)	Used disk space on /abs (Gb)
11-1-2024	77	50	12	72	50	14
10-1-2024	77	50	12	72	50	14
9-1-2024	77	50	12	72	50	14
8-1-2024	77	50	12	76	50	12
7-1-2024	77	50	11	78	50	11

Harddisk Usage KLH\_PRD\_SRSAPP02

	Free disk space on / (%)	Total disk space on / (Gb)	Used disk space on / (Gb)	Free disk space on /abs (%)	Total disk space on /abs (Gb)	Used disk space on /abs (Gb)
11-1-2024	78	50	11	84	50	8
10-1-2024	78	50	11	85	50	8
9-1-2024	78	50	11	85	50	8
8-1-2024	78	50	11	87	50	7
7-1-2024	78	50	11	88	50	6

# Weekly SLA Customer Report

Customer KLH\_Production (24/7)  
 Database ID 139



Harddisk Usage KLH\_PRD\_SRSBI01

	Free disk space on / (%)	Total disk space on / (Gb)	Used disk space on / (Gb)	Free disk space on /abs/dumpf	Total disk space on /abs/dumpf	Used disk space on /abs/dumpf	Free disk space on /u01 (%)	Total disk space on /u01 (Gb)	Used disk space on /u01 (Gb)
11-1-2024	36	50	32	20	700	558	62	50	19
10-1-2024	36	50	32	20	700	561	62	50	19
9-1-2024	36	50	32	19	700	565	62	50	19
8-1-2024	40	50	30	19	700	566	62	50	19
7-1-2024	40	50	30	19	700	568	62	50	19

Harddisk Usage KLH\_PRD\_SRSBIDB01

	Free disk space on / (%)	Total disk space on / (Gb)	Used disk space on / (Gb)	Free disk space on /abs/dumpf	Total disk space on /abs/dumpf	Used disk space on /abs/dumpf	Free disk space on /u01 (%)	Total disk space on /u01 (Gb)	Used disk space on /u01 (Gb)
11-1-2024	72	100	28	20	700	558	31	400	274
10-1-2024	72	100	28	20	700	561	32	400	274
9-1-2024	72	100	28	19	700	565	32	400	274
8-1-2024	74	100	26	19	700	566	34	400	265
7-1-2024	74	100	26	19	700	568	35	400	260

# Weekly SLA Customer Report

Customer KLH\_Production (24/7)  
 Database ID 139



Harddisk Usage KLH\_PRD\_SRSD01

	Free disk space on / (%)	Total disk space on / (Gb)	Used disk space on / (Gb)	Free disk space on /abs/dumpf	Total disk space on /abs/dumpf	Used disk space on /abs/dumpf	Free disk space on /u01 (%)	Total disk space on /u01 (Gb)	Used disk space on /u01 (Gb)
11-1-2024	72	100	28	20	700	558	58	1,000	418
10-1-2024	72	100	28	20	700	561	59	1,000	408
9-1-2024	72	100	28	19	700	565	60	1,000	399
8-1-2024	74	100	26	19	700	566	60	1,000	399
7-1-2024	74	100	26	19	700	568	60	1,000	402

Harddisk Usage KLH\_PRD\_SRSD02

	Free disk space on / (%)	Total disk space on / (Gb)	Used disk space on / (Gb)	Free disk space on /abs/dumpf	Total disk space on /abs/dumpf	Used disk space on /abs/dumpf	Free disk space on /u01 (%)	Total disk space on /u01 (Gb)	Used disk space on /u01 (Gb)
11-1-2024	72	100	28	20	700	558	51	1,000	493
10-1-2024	72	100	28	20	700	561	51	1,000	491
9-1-2024	72	100	28	19	700	565	51	1,000	493
8-1-2024	74	100	26	19	700	566	52	1,000	483
7-1-2024	74	100	26	19	700	568	52	1,000	482

# Weekly SLA Customer Report

Customer KLH\_Production (24/7)  
 Database ID 139



Harddisk Usage KLH\_PRD\_SRSNFS01

	Free disk space on / (%)	Total disk space on / (Gb)	Used disk space on / (Gb)	Free disk space on /var/nfs/ex	Total disk space on /var/nfs/ex	Used disk space on /var/nfs/ex	Free disk space on /var/nfs/ora	Total disk space on /var/nfs/ora	Used disk space on /var/nfs/ora
11-1-2024	63	30	11	40	100	60	20	700	558
10-1-2024	63	30	11	41	100	59	20	700	561
9-1-2024	63	30	11	41	100	59	19	700	565
8-1-2024	63	30	11	41	100	59	19	700	566
7-1-2024	63	30	11	42	100	58	19	700	568

Harddisk Usage KLH\_PRD\_SRSSUPPORT01\_DISTRIB

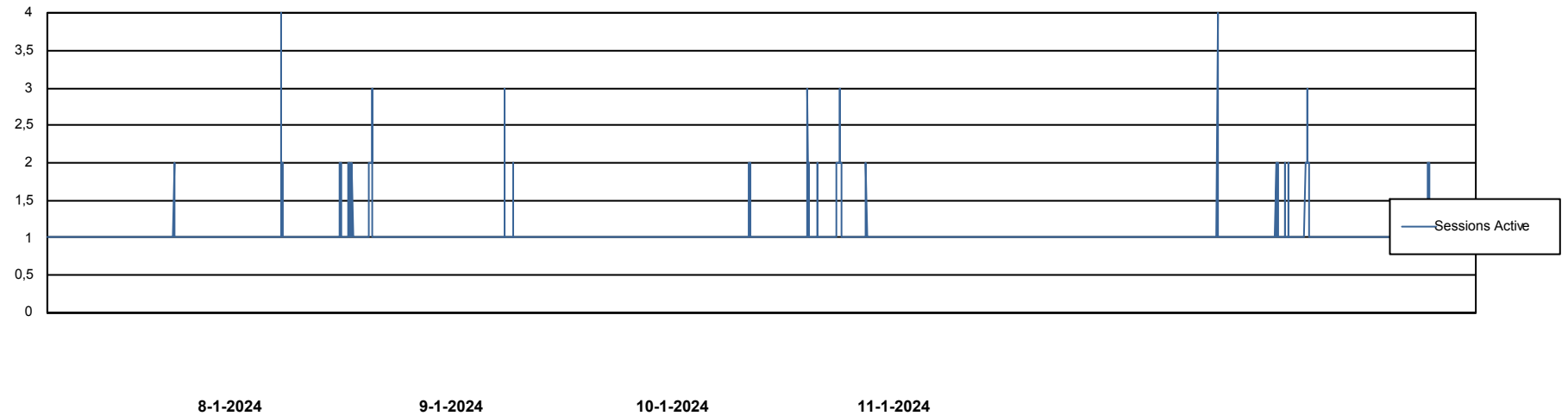
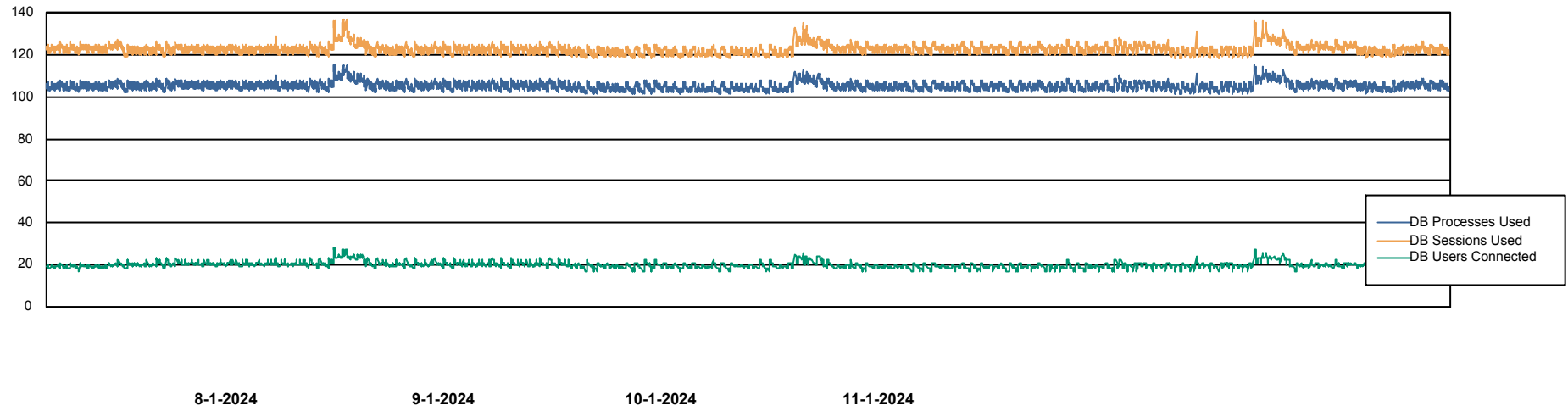
	Free disk space on C: (%)	Total disk space on C: (Gb)	Used disk space on C: (Gb)
11-1-2024	34	100	66
10-1-2024	36	100	64
9-1-2024	39	100	61
8-1-2024	29	100	71
7-1-2024	26	100	74

# Weekly SLA Customer Report

Customer KLH\_Production (24/7)  
Database ID 139



## Database Performance KLHDB\_BI

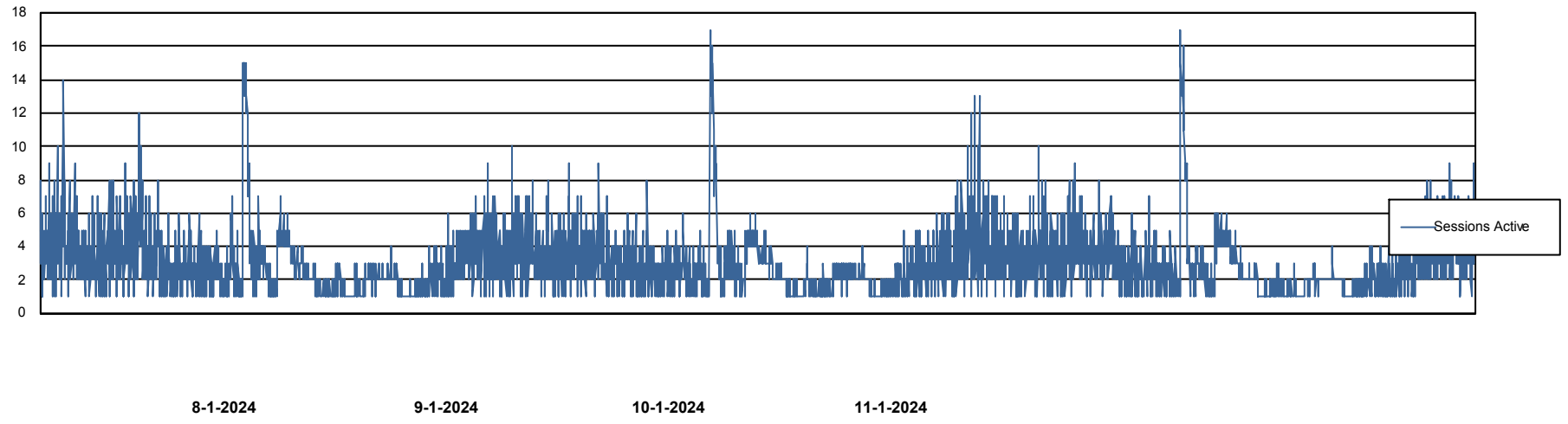
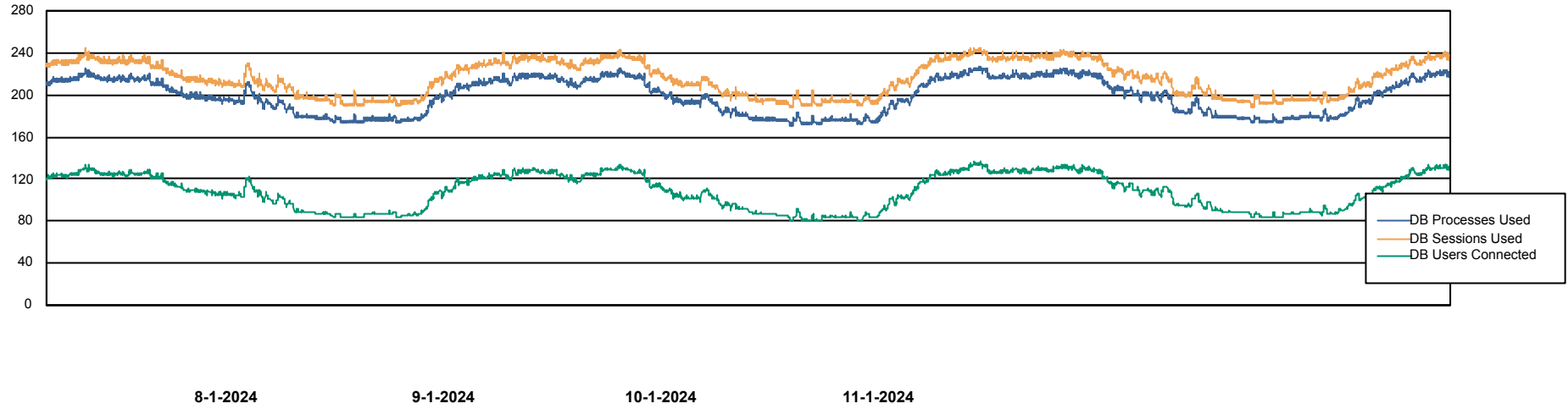


# Weekly SLA Customer Report

Customer KLH\_Production (24/7)  
Database ID 139



## Database Performance KLHDB\_Production

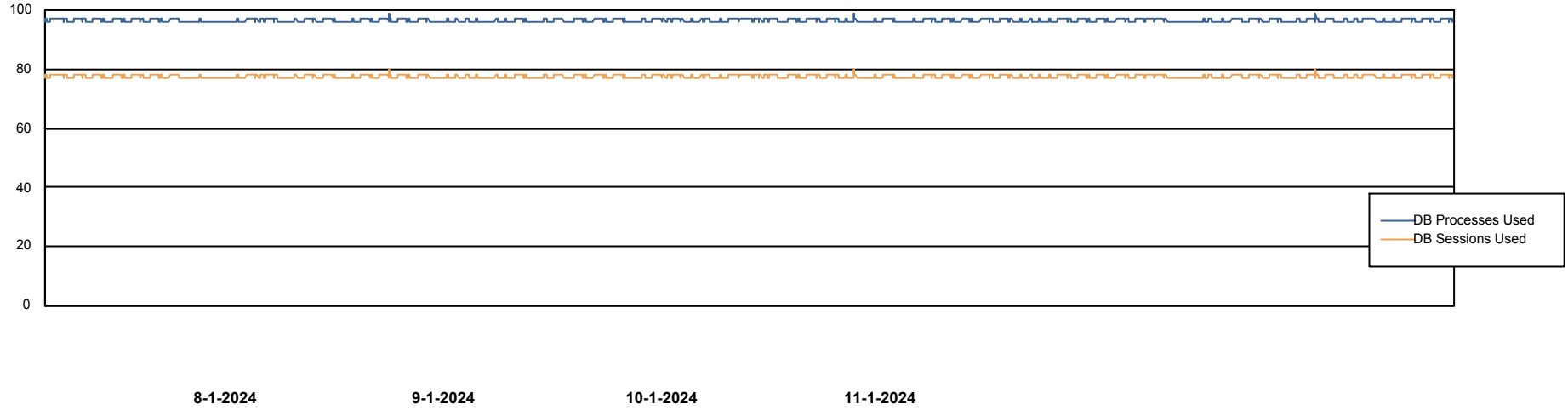


# Weekly SLA Customer Report

Customer KLH\_Production (24/7)  
Database ID 139



Database Performance KLHDB\_Standby



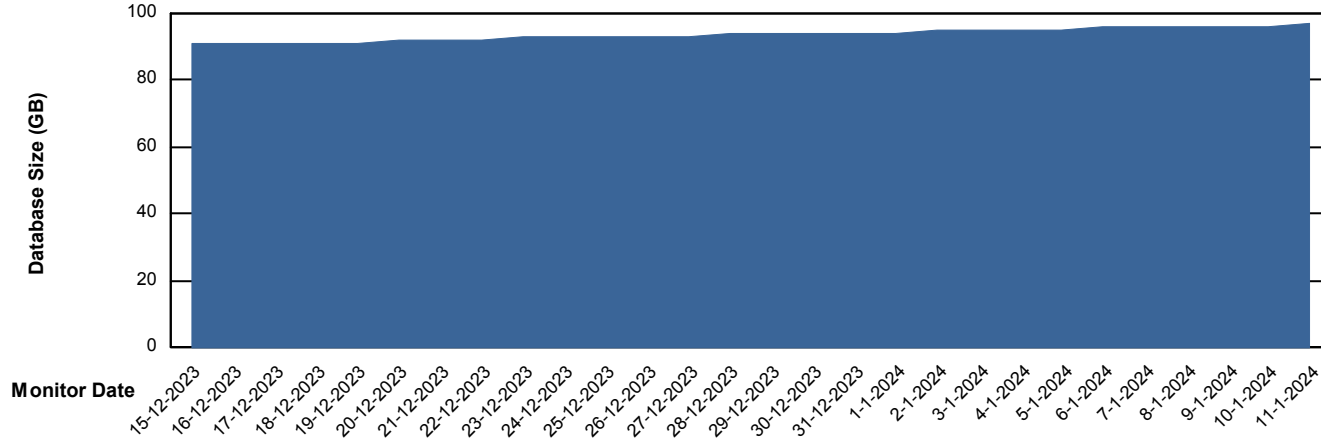
# Weekly SLA Customer Report

Customer KLH\_Production (24/7)  
Database ID 139



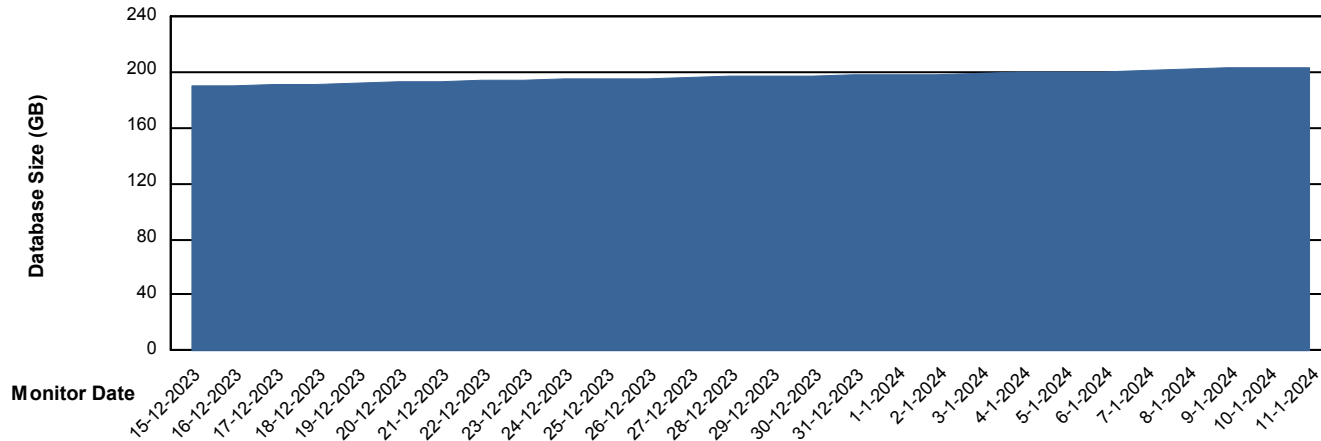
DATABASE SIZE KLHDB\_BI

### Database growth over last month



DATABASE SIZE KLHDB\_Production

### Database growth over last month



# Weekly SLA Customer Report

Customer KLH\_Production (24/7)  
Database ID 139



## Database Tablespace KLHDB\_BI

Date	Tablespace Name	Filesize (Gb)	Usedsize (Gb)	Percentage free
11-1-2024	ABSDATA	60	31	48
	INDX	72	51	30
10-1-2024	ABSDATA	60	31	48
	INDX	72	51	30
9-1-2024	ABSDATA	60	31	49
	INDX	72	51	30
8-1-2024	ABSDATA	60	31	49
	INDX	72	50	30
7-1-2024	ABSDATA	60	31	49
	INDX	60	50	17

# Weekly SLA Customer Report

Customer KLH\_Production (24/7)  
 Database ID 139



Database Tablespace KLHDB\_Production

Date	Tablespace Name	Filesize (Gb)	Usedsize (Gb)	Percentage free
11-1-2024	ABSDATA	217	182	16
	INDX	8	4	49
10-1-2024	ABSDATA	217	182	16
	INDX	8	4	49
9-1-2024	ABSDATA	217	181	16
	INDX	8	4	50
8-1-2024	ABSDATA	217	181	17
	INDX	8	4	50
7-1-2024	ABSDATA	217	180	17
	INDX	8	4	50

BI Status and last ETL error for KLHDB\_BI

	ma 8/1/2024	di 9/1/2024	wo 10/1/2024	do 11/1/2024
<b>ABS DataWarehouse ETL Health</b>	OK	OK	OK	OK
<b>ABS DWHStaging ETL Health</b>	OK	OK	OK	OK

BI last ETL error for KLHDB\_BI

ma, 8-01-2024	None
zo, 7-01-2024	None
do, 11-01-2024	None
zo, 7-01-2024	None
ma, 8-01-2024	None
do, 11-01-2024	None
di, 9-01-2024	None
wo, 10-01-2024	None
di, 9-01-2024	None
wo, 10-01-2024	None

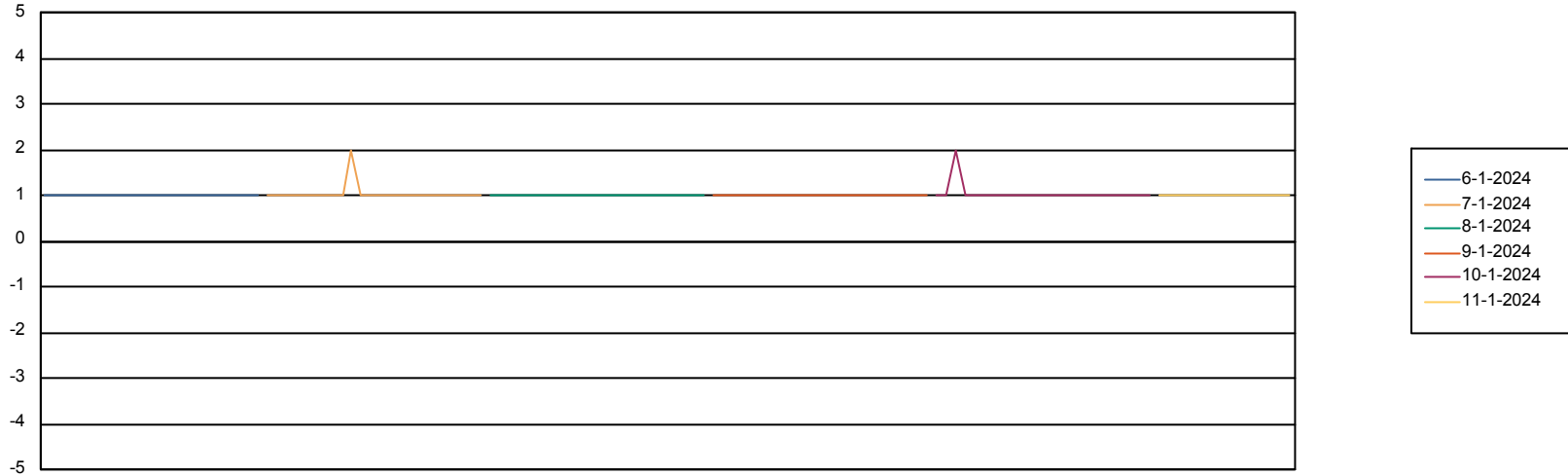
# Weekly SLA Customer Report

Customer KLH\_Production (24/7)  
Database ID 139



Standby Database Health KLH\_Production (24/7)

### Recovery lag for last 7 days



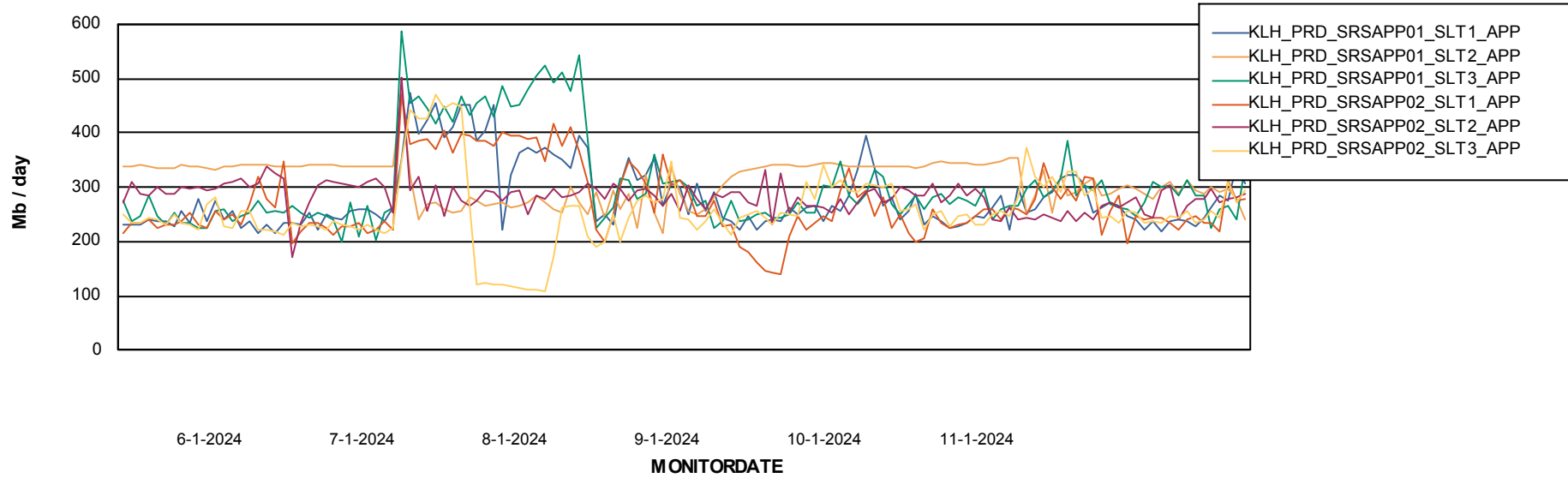
# Weekly SLA Customer Report

Customer KLH\_Production (24/7)  
Database ID 139

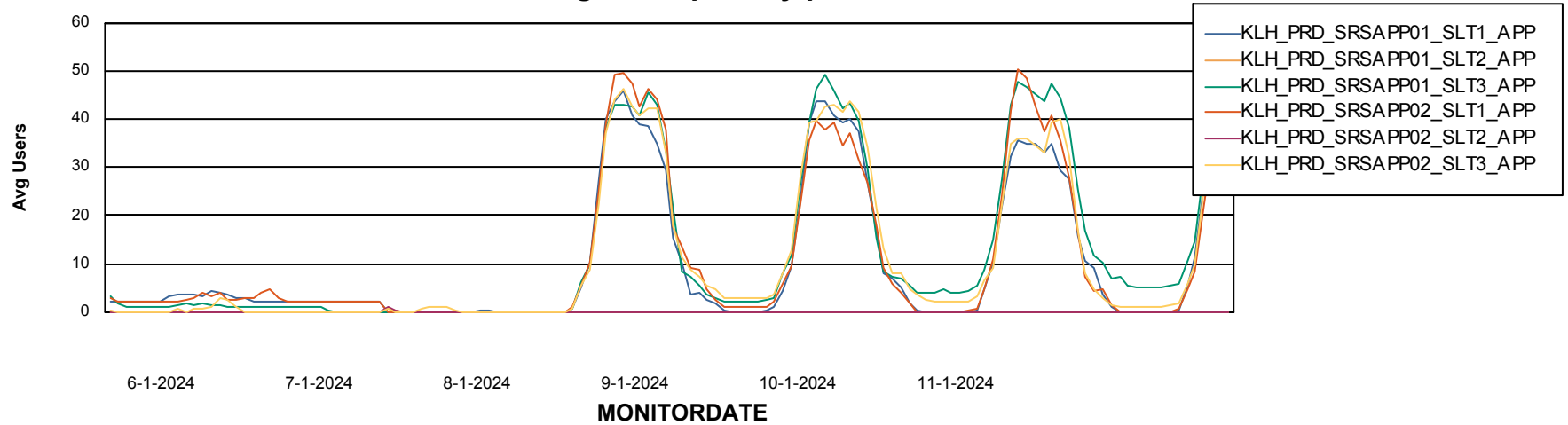


## ABSSolute Application Server Services

### Avg memory used per ABS Server Service



### Avg users per day per ABS server



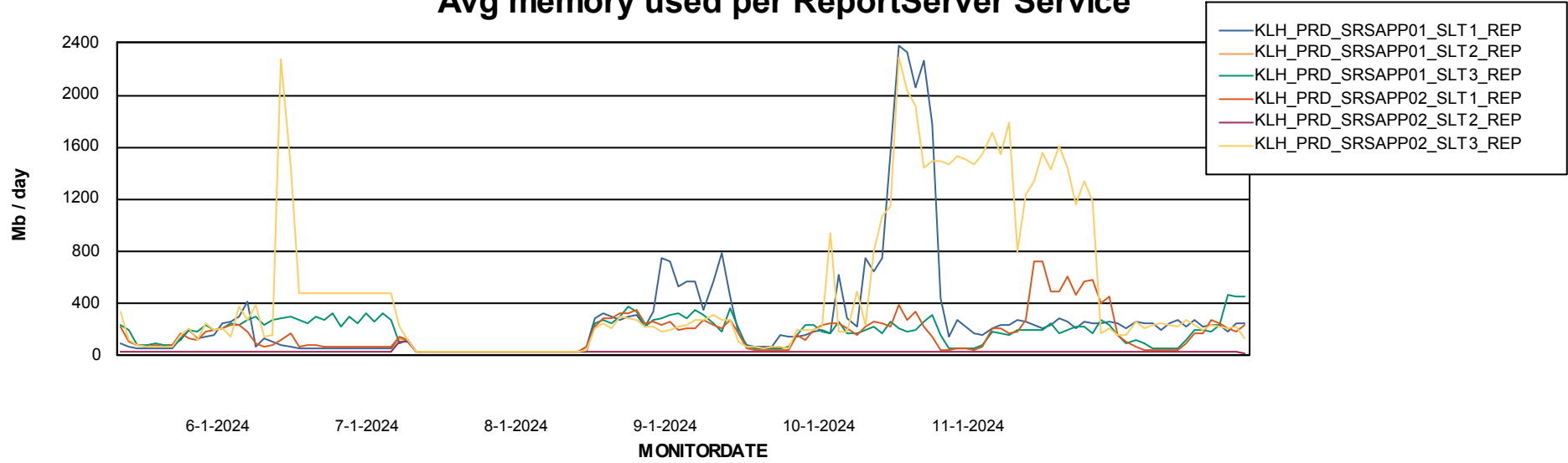
# Weekly SLA Customer Report

Customer KLH\_Production (24/7)  
Database ID 139



## ABSSolute Application ReportServer Services

### Avg memory used per ReportServer Service



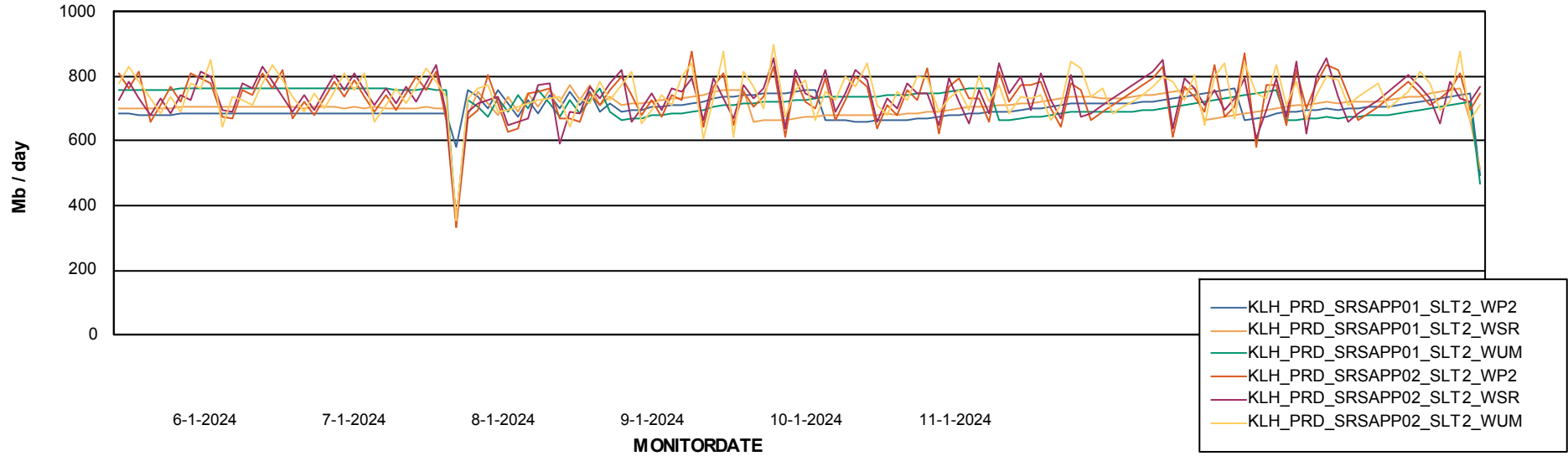
# Weekly SLA Customer Report

Customer KLH\_Production (24/7)  
Database ID 139



## ABSolute Web Component Services

### Avg memory used per ABS Web component



# Weekly SLA Customer Report

Customer KLH\_Production (24/7)  
Database ID 139



## Disaster per ABS component

