

# Weekly SLA Customer Report

Customer NIX\_Production  
 Database ID 51



Harddisk Usage NIX\_PRD\_ABSAPP01

	Free disk space on C: (%)	Total disk space on C: (Gb)	Used disk space on C: (Gb)	Free disk space on E: (%)	Total disk space on E: (Gb)	Used disk space on E: (Gb)
28-10-2023	49	207	105	100	98	0
27-10-2023	49	207	105	100	98	0
26-10-2023	49	207	105	100	98	0
25-10-2023	49	207	104	100	98	0
24-10-2023	50	207	104	100	98	0
23-10-2023	50	207	104	100	98	0
22-10-2023	49	207	104	100	98	0

Harddisk Usage NIX\_PRD\_ABSAPP04

	Free disk space on C: (%)	Total disk space on C: (Gb)	Used disk space on C: (Gb)
28-10-2023	29	127	90
27-10-2023	29	127	90
26-10-2023	23	127	97
25-10-2023	16	127	107
24-10-2023	16	127	106
23-10-2023	16	127	106
22-10-2023	15	127	107

# Weekly SLA Customer Report

Customer NIX\_Production  
Database ID 51



## Harddisk Usage NIX\_PRD\_ABSWEB02

	Free disk space on C: (%)	Total disk space on C: (Gb)	Used disk space on C: (Gb)
28-10-2023	85	300	44
27-10-2023	85	300	44
26-10-2023	85	300	44
25-10-2023	85	300	44
24-10-2023	85	300	44
23-10-2023	85	300	44
22-10-2023	85	300	44

## Harddisk Usage NIX\_PRD\_NIXONABSBI

	Free disk space on C: (%)	Total disk space on C: (Gb)	Used disk space on C: (Gb)	Free disk space on E: (%)	Total disk space on E: (Gb)	Used disk space on E: (Gb)
28-10-2023	66	179	61	44	700	390
27-10-2023	66	179	61	45	700	384
26-10-2023	66	179	61	45	700	384
25-10-2023	66	179	61	45	700	384
24-10-2023	66	179	61	45	700	384
23-10-2023	66	179	61	45	700	384
22-10-2023	66	179	61	45	700	384

# Weekly SLA Customer Report

Customer NIX\_Production  
 Database ID 51



Harddisk Usage NIX\_PRD\_ORCDB1

	Free disk space on C: (%)	Total disk space on C: (Gb)	Used disk space on C: (Gb)	Free disk space on D: (%)	Total disk space on D: (Gb)	Used disk space on D: (Gb)	Free disk space on E: (%)	Total disk space on E: (Gb)	Used disk space on E: (Gb)	Free disk space on F: (%)
28-10-2023	68	554	175	45	586	319	48	605	314	42
27-10-2023	68	554	177	45	586	319	48	605	314	42
26-10-2023	68	554	178	46	586	317	48	605	314	42
25-10-2023	68	554	178	46	586	314	48	605	314	42
24-10-2023	68	554	177	46	586	314	48	605	314	42
23-10-2023	68	554	177	46	586	314	48	605	314	43
22-10-2023	68	554	180	46	586	314	48	605	314	43

Harddisk Usage NIX\_PRD\_ORCDB2

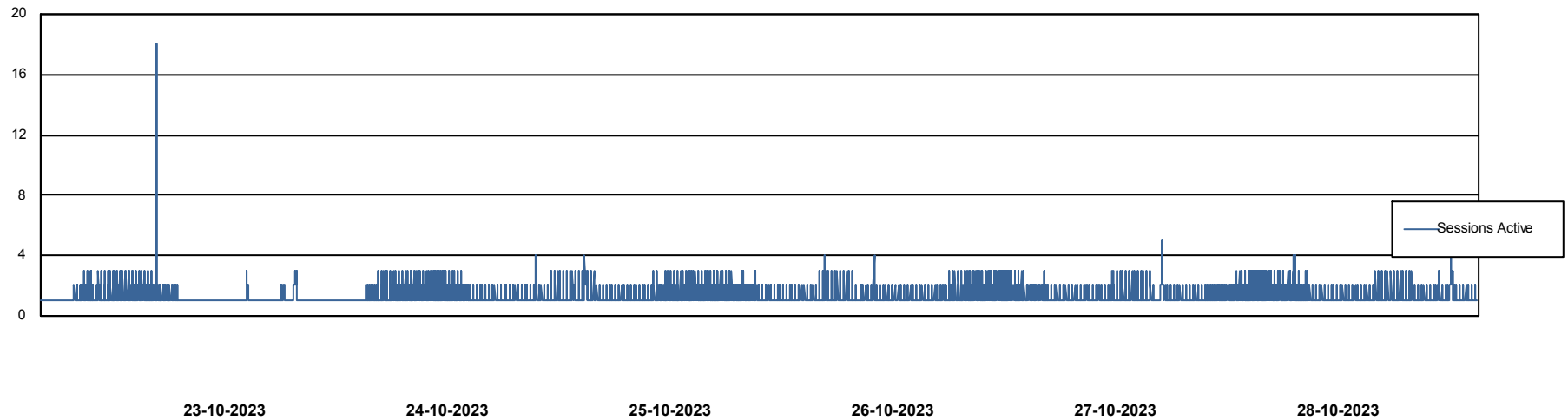
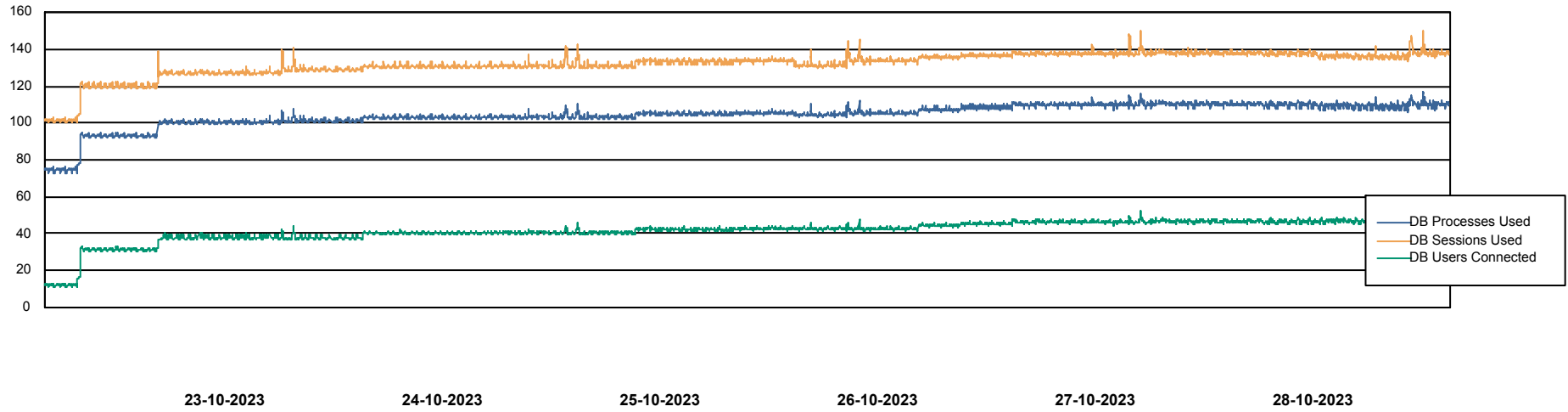
	Free disk space on C: (%)	Total disk space on C: (Gb)	Used disk space on C: (Gb)	Free disk space on D: (%)	Total disk space on D: (Gb)	Used disk space on D: (Gb)	Free disk space on E: (%)	Total disk space on E: (Gb)	Used disk space on E: (Gb)	Free disk space on F: (%)
28-10-2023	88	574	69	41	488	290	54	684	314	88
27-10-2023	88	574	69	41	488	290	54	684	313	88
26-10-2023	88	574	69	41	488	288	54	684	313	88
25-10-2023	88	574	68	42	488	285	54	684	313	87
24-10-2023	88	574	68	42	488	285	54	684	313	88
23-10-2023	88	574	68	42	488	285	54	684	313	88
22-10-2023	88	574	68	42	488	285	54	684	313	88

# Weekly SLA Customer Report

Customer NIX\_Production  
Database ID 51



## Database Performance NIXDB\_BI

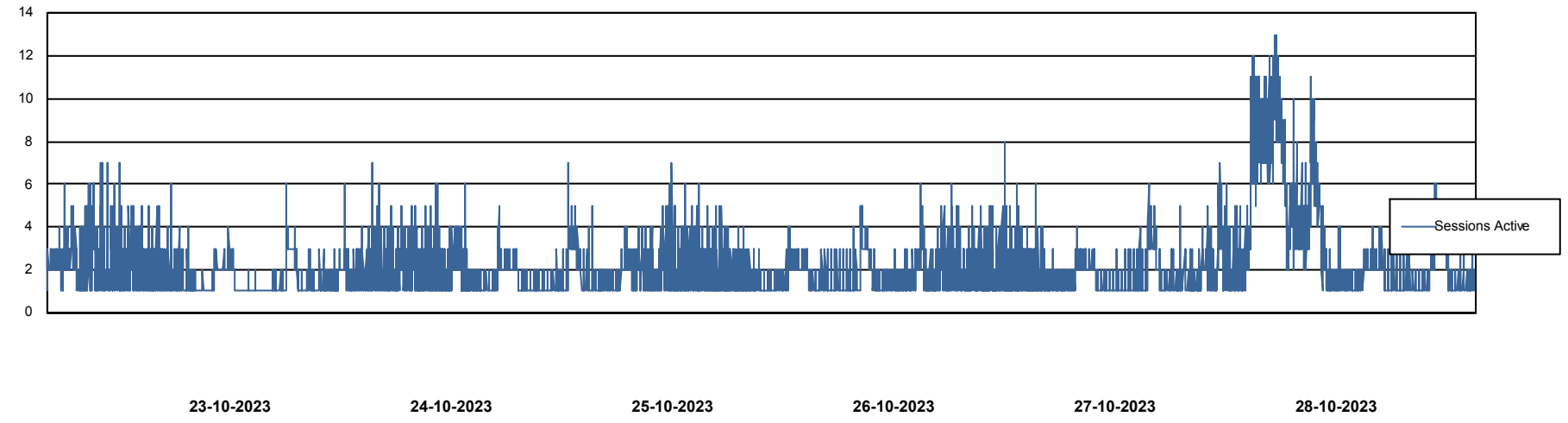
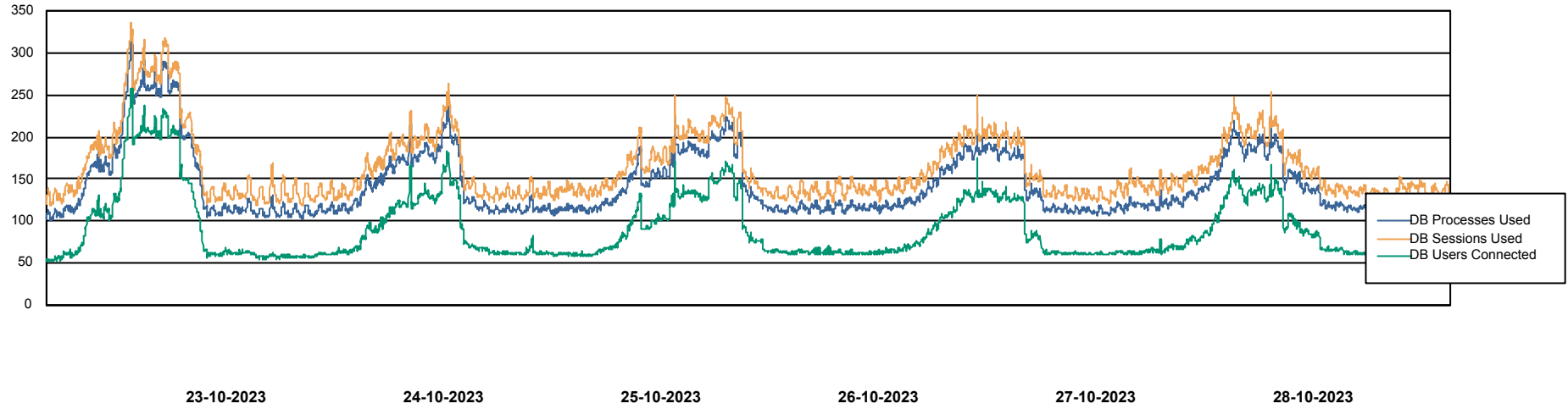


# Weekly SLA Customer Report

Customer NIX\_Production  
Database ID 51



## Database Performance NIXDB\_Production

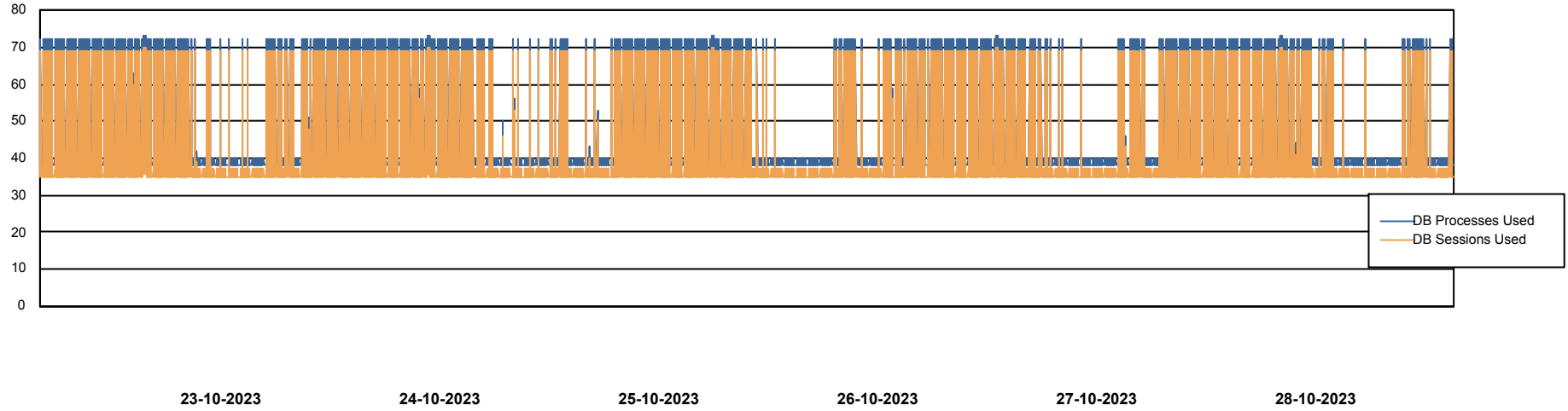


# Weekly SLA Customer Report

Customer NIX\_Production  
Database ID 51



## Database Performance NIXDB\_Standby



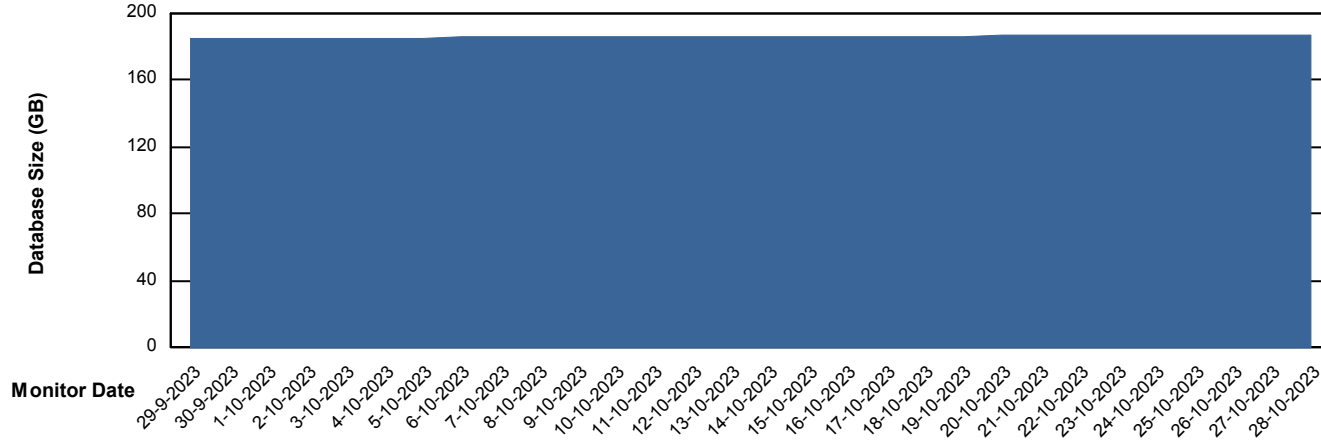
# Weekly SLA Customer Report

Customer NIX\_Production  
Database ID 51



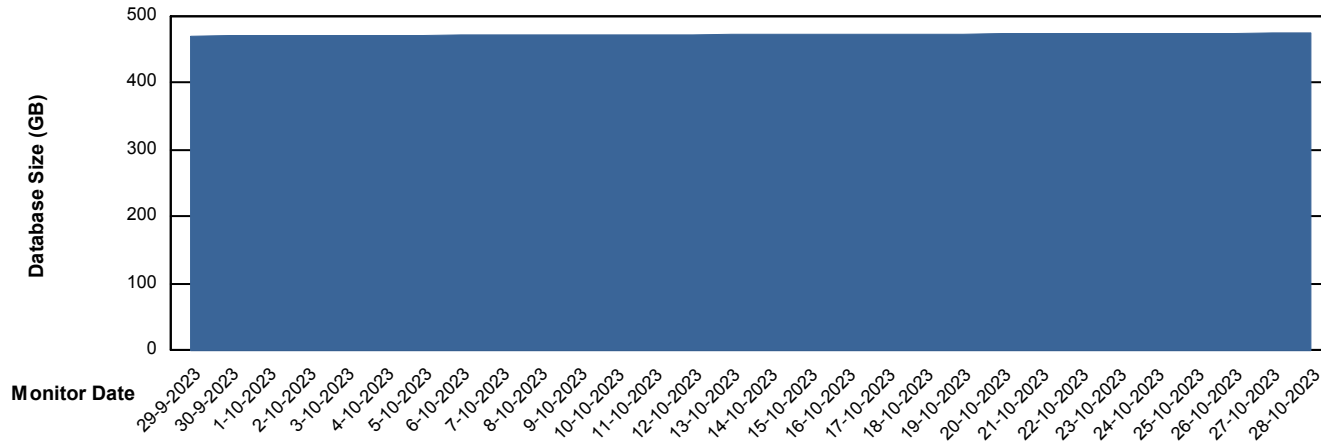
DATABASE SIZE NIXDB\_BI

### Database growth over last month



DATABASE SIZE NIXDB\_Production

### Database growth over last month



# Weekly SLA Customer Report

Customer NIX\_Production  
Database ID 51



Database Tablespace NIXDB\_BI

Date	Tablespace Name	Filesize (Gb)	Usedsize (Gb)	Percentage free
28-10-2023	ABSDATA	103	84	18
	INDX	126	101	20
27-10-2023	ABSDATA	103	84	18
	INDX	126	101	20
26-10-2023	ABSDATA	103	84	18
	INDX	126	101	20
25-10-2023	ABSDATA	103	84	18
	INDX	126	101	20
24-10-2023	ABSDATA	103	84	18
	INDX	126	101	20
23-10-2023	ABSDATA	103	84	18
	INDX	126	101	20
22-10-2023	ABSDATA	103	84	18
	INDX	126	101	20

# Weekly SLA Customer Report

Customer NIX\_Production  
 Database ID 51



Database Tablespace NIXDB\_Production

Date	Tablespace Name	Filesize (Gb)	Usedsize (Gb)	Percentage free
28-10-2023	ABSDATA	231	190	18
	INDX	313	259	17
27-10-2023	ABSDATA	231	190	18
	INDX	313	259	17
26-10-2023	ABSDATA	231	190	18
	INDX	313	259	17
25-10-2023	ABSDATA	226	190	16
	INDX	313	259	17
24-10-2023	ABSDATA	226	190	16
	INDX	313	259	17
23-10-2023	ABSDATA	226	190	16
	INDX	313	259	17
22-10-2023	ABSDATA	226	190	16
	INDX	313	259	17

BI Status and last ETL error for NIXDB\_BI

	ma 23/10/2023	di 24/10/2023	wo 25/10/2023	do 26/10/2023	vr 27/10/2023	za 28/10/2023
<b>ABS DataWarehouse ETL Health</b>	OK	OK	OK	OK	OK	OK
<b>ABS DWHStaging ETL Health</b>	OK	OK	OK	OK	OK	OK

# Weekly SLA Customer Report

Customer NIX\_Production  
Database ID 51



BI last ETL error for	NIXDB_BI
zo, 22-10-2023	None
za, 28-10-2023	None
vr, 27-10-2023	None
wo, 25-10-2023	None
do, 26-10-2023	None
za, 28-10-2023	None
ma, 23-10-2023	None
wo, 25-10-2023	None
do, 26-10-2023	None
zo, 22-10-2023	None
di, 24-10-2023	None
ma, 23-10-2023	None
di, 24-10-2023	None
vr, 27-10-2023	None

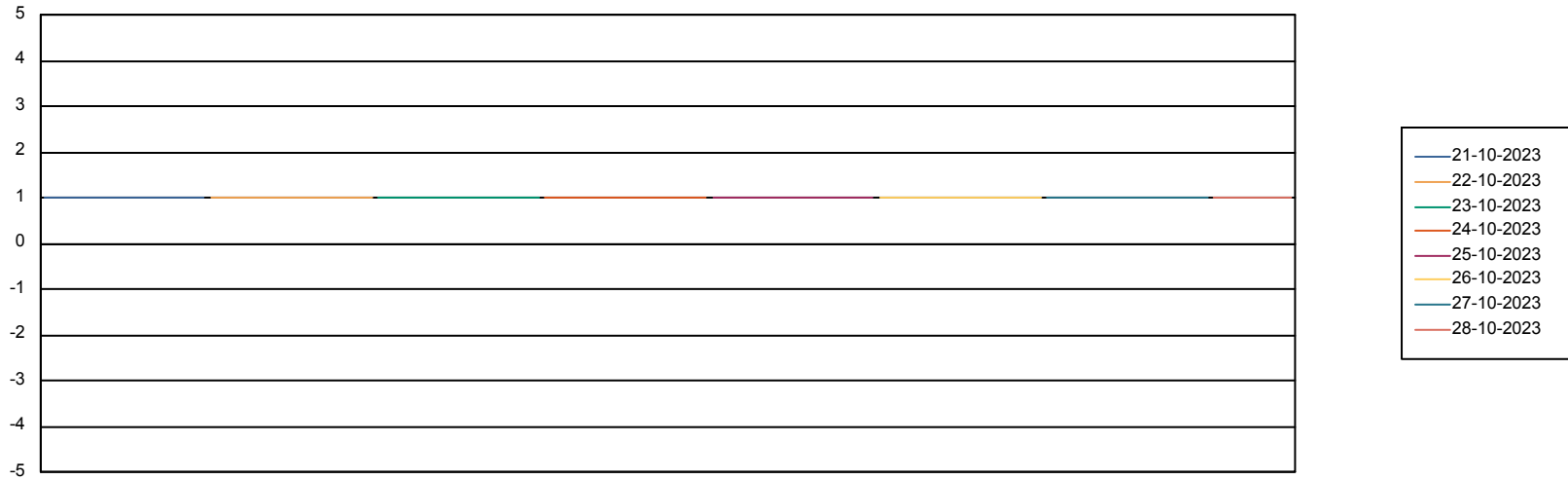
# Weekly SLA Customer Report

Customer NIX\_Production  
Database ID 51



Standby Database Health NIX\_Production

## Recovery lag for last 7 days



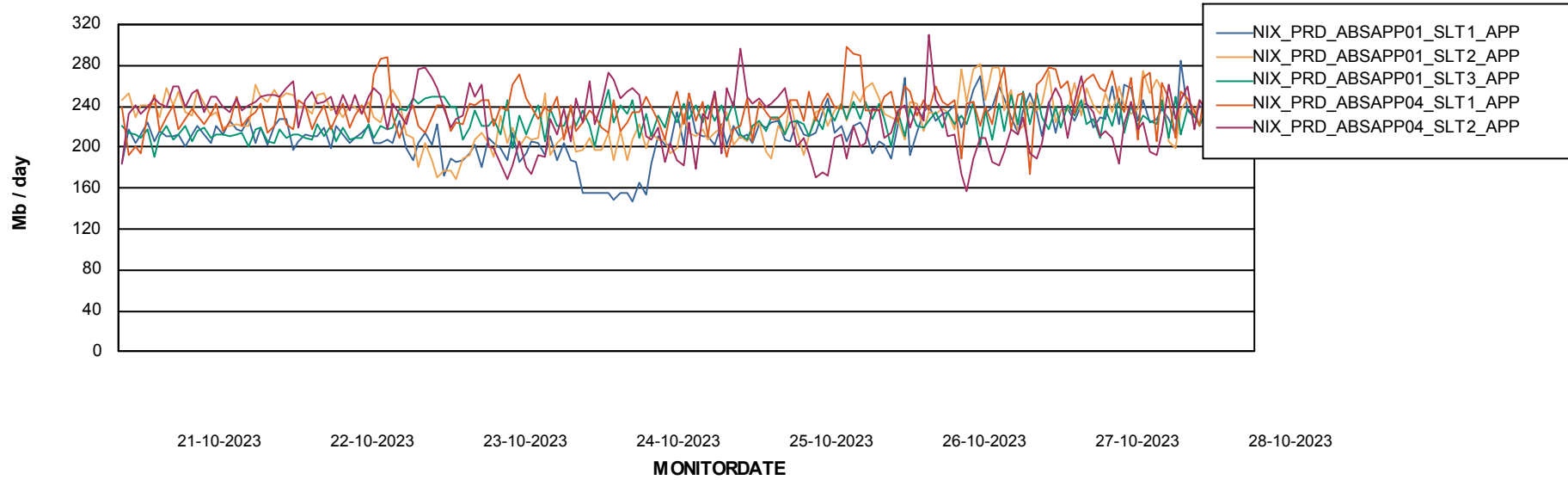
# Weekly SLA Customer Report

Customer NIX\_Production  
Database ID 51

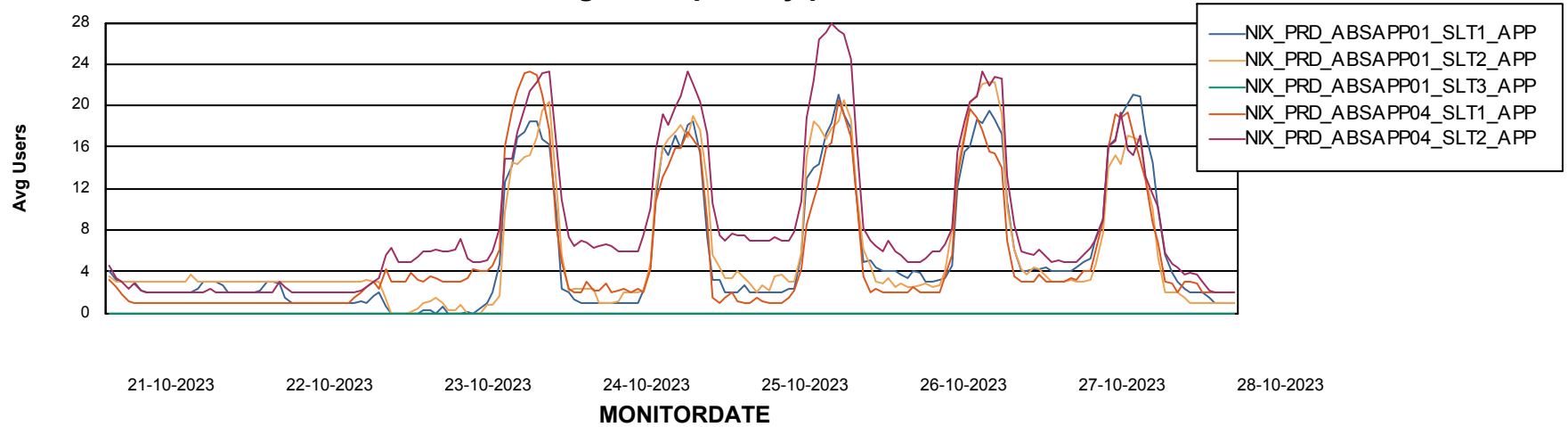


## ABSolute Application Server Services

### Avg memory used per ABS Server Service



### Avg users per day per ABS server



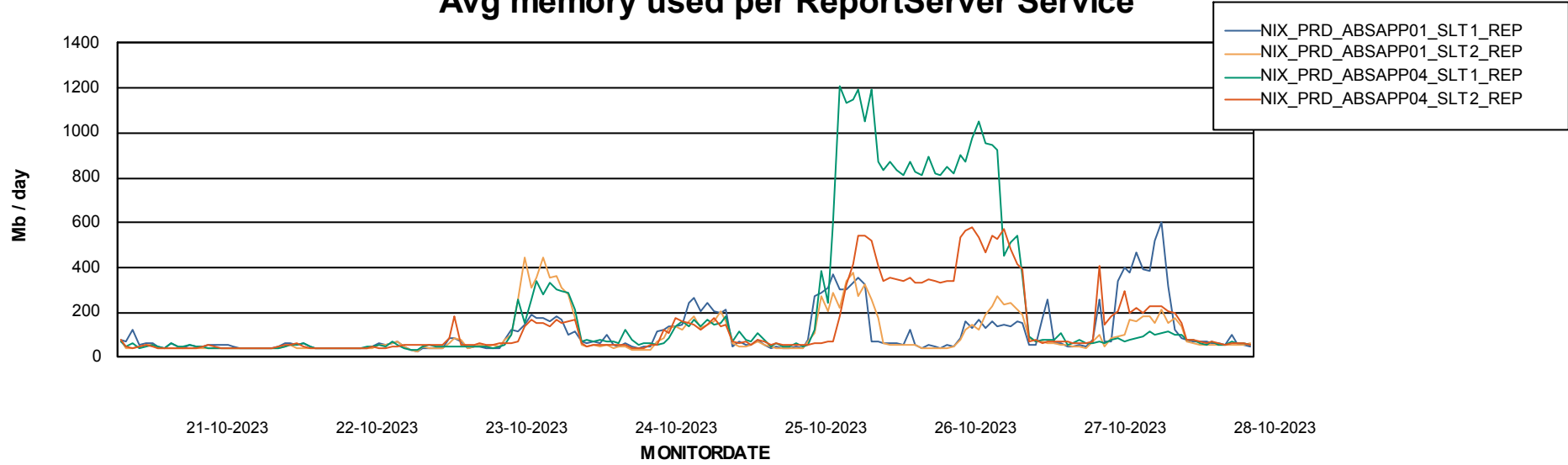
# Weekly SLA Customer Report

Customer NIX\_Production  
Database ID 51



## ABSSolute Application ReportServer Services

### Avg memory used per ReportServer Service



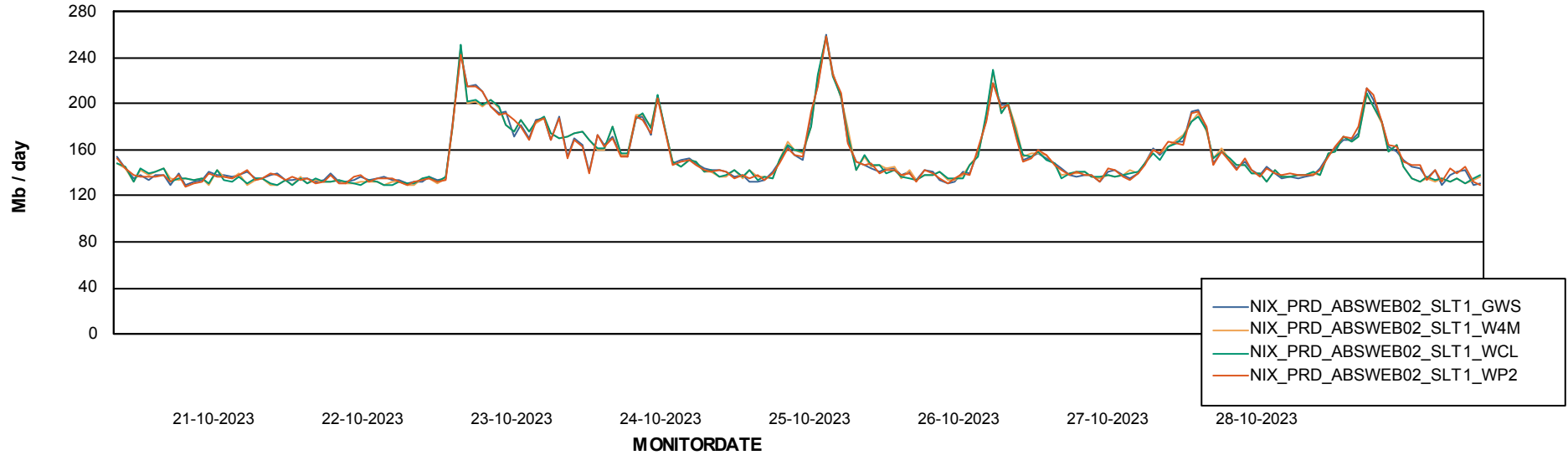
# Weekly SLA Customer Report

Customer NIX\_Production  
Database ID 51



## ABSSolute Web Component Services

### Avg memory used per ABS Web component



# Weekly SLA Customer Report

Customer NIX\_Production  
Database ID 51



## Disaster per ABS component

