

# Weekly SLA Customer Report

Customer AUJ Production  
Database ID 41



## Harddisk Usage AUJ Prod. ABSSolute DB server: PABSDB1

	Free disk space on / (%)	Total disk space on / (Gb)	Used disk space on / (Gb)	Free disk space on /bk (%)	Total disk space on /bk (Gb)	Used disk space on /bk (Gb)	Free disk space on /u02 (%)	Total disk space on /u02 (Gb)	Used disk space on /u02 (Gb)
7-10-2023	86	200	29	58	1,200	508	15	1,799	1,537
6-10-2023	86	200	29	54	1,200	556	15	1,799	1,537
5-10-2023	86	200	29	54	1,200	556	15	1,799	1,537
4-10-2023	86	200	29	54	1,200	556	15	1,799	1,537
3-10-2023	86	200	29	54	1,200	549	15	1,799	1,537
2-10-2023	86	200	29	54	1,200	546	15	1,799	1,537
1-10-2023	86	200	28	55	1,200	545	15	1,799	1,537

## Harddisk Usage AUJ Prod. BI DB server: PABSBI1

	Free disk space on / (%)	Total disk space on / (Gb)	Used disk space on / (Gb)	Free disk space on /u02 (%)	Total disk space on /u02 (Gb)	Used disk space on /u02 (Gb)
7-10-2023	87	200	25	67	1,000	328
6-10-2023	87	200	25	68	1,000	324
5-10-2023	87	200	25	68	1,000	324
4-10-2023	87	200	25	68	1,000	324
3-10-2023	87	200	25	68	1,000	324
2-10-2023	87	200	25	68	1,000	323
1-10-2023	87	200	25	67	1,000	327

# Weekly SLA Customer Report

Customer AUJ Production  
Database ID 41



## Harddisk Usage AUJ\_PRD\_ABS\_APP1

	Free disk space on / (%)	Total disk space on / (Gb)	Used disk space on / (Gb)	Free disk space on /abs (%)	Total disk space on /abs (Gb)	Used disk space on /abs (Gb)
7-10-2023	70	40	12	42	85	49
6-10-2023	70	40	12	42	85	49
5-10-2023	70	40	12	42	85	49
4-10-2023	70	40	12	44	85	48
3-10-2023	70	40	12	45	85	46
2-10-2023	70	40	12	47	85	45
1-10-2023	70	40	12	47	85	45

## Harddisk Usage AUJ\_PRD\_ABS\_APP2

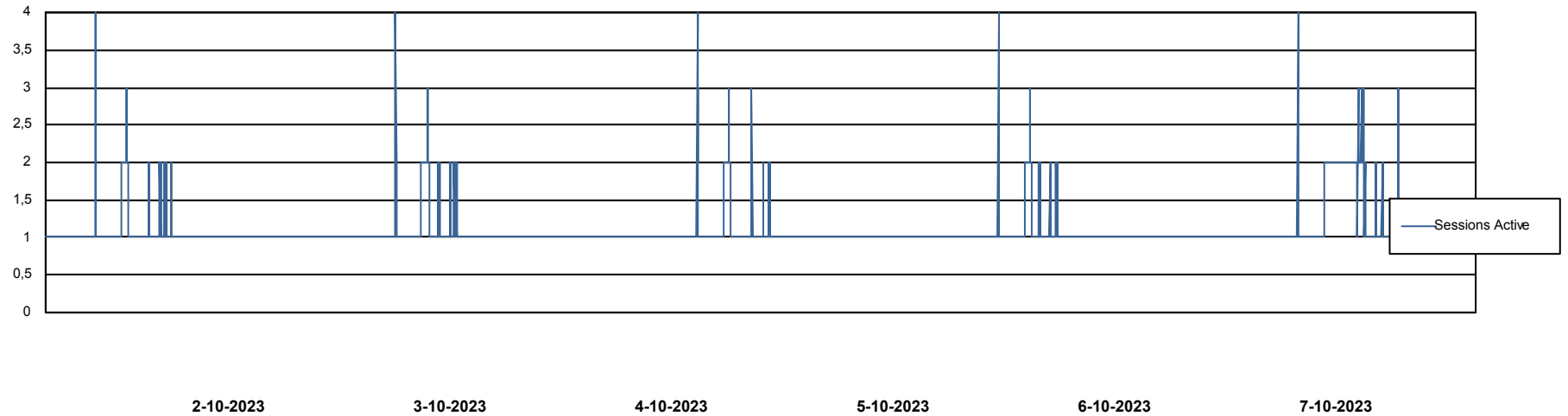
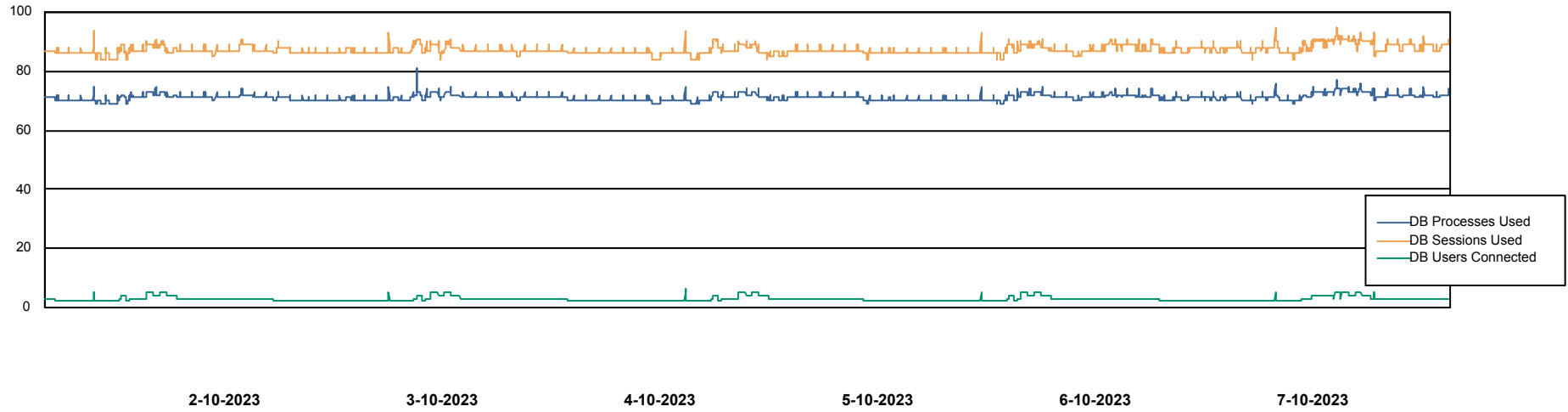
	Free disk space on / (%)	Total disk space on / (Gb)	Used disk space on / (Gb)	Free disk space on /abs (%)	Total disk space on /abs (Gb)	Used disk space on /abs (Gb)
7-10-2023	84	40	7	67	85	28
6-10-2023	84	40	7	67	85	28
5-10-2023	84	40	7	68	85	27
4-10-2023	84	40	7	69	85	27
3-10-2023	84	40	7	70	85	26
2-10-2023	84	40	7	70	85	25
1-10-2023	84	40	7	71	85	25

# Weekly SLA Customer Report

Customer AUJ Production  
Database ID 41



## Database Performance AUJ Prod. BI DB (PABSBI1 server)

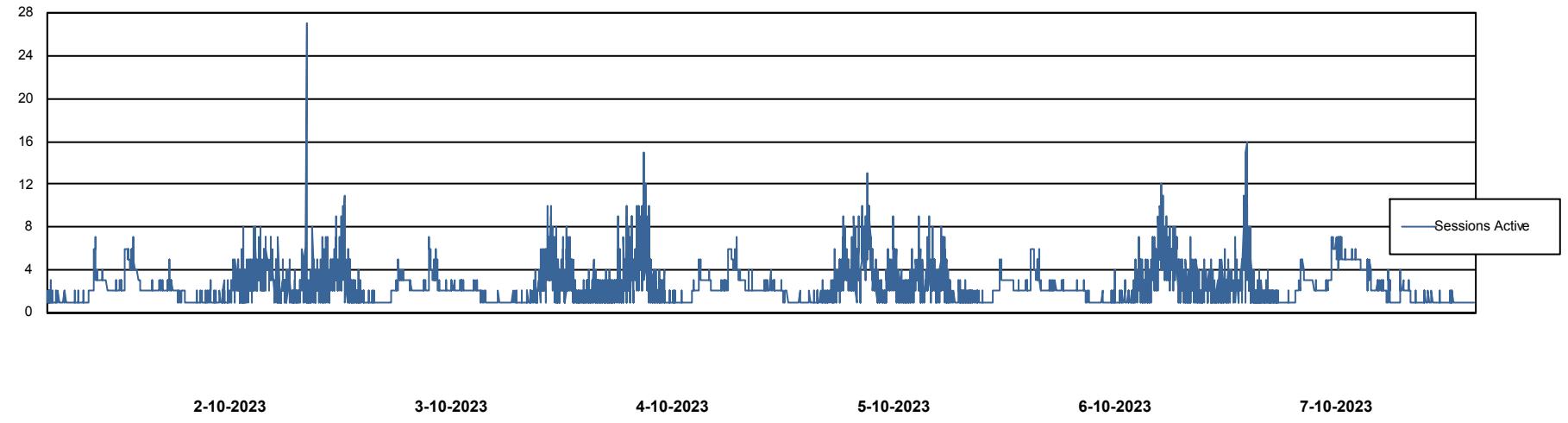
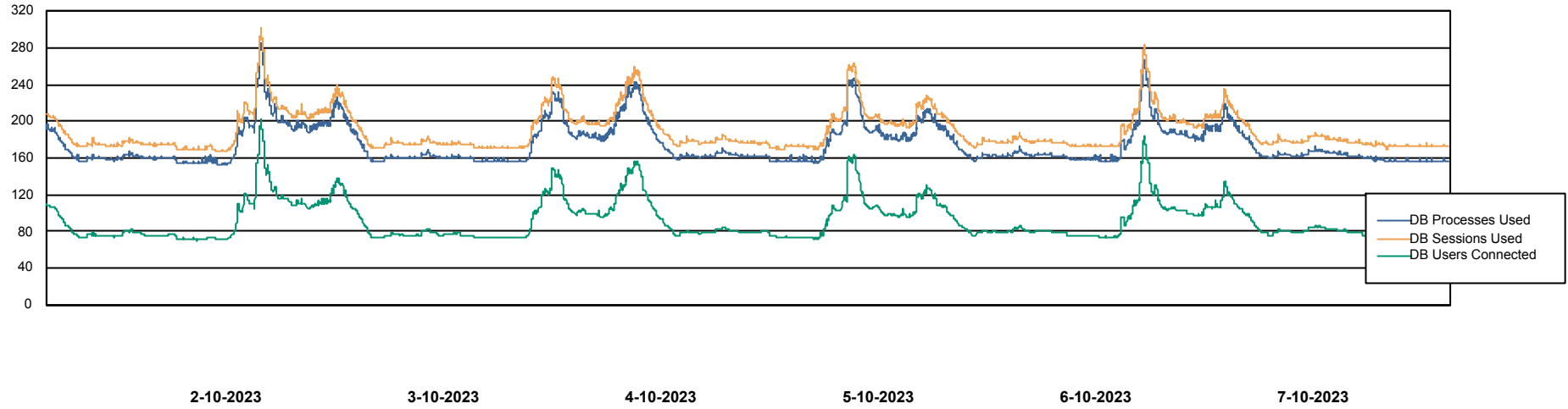


# Weekly SLA Customer Report

Customer AUJ Production  
Database ID 41



## Database Performance AUJ\_DB1\_Primary



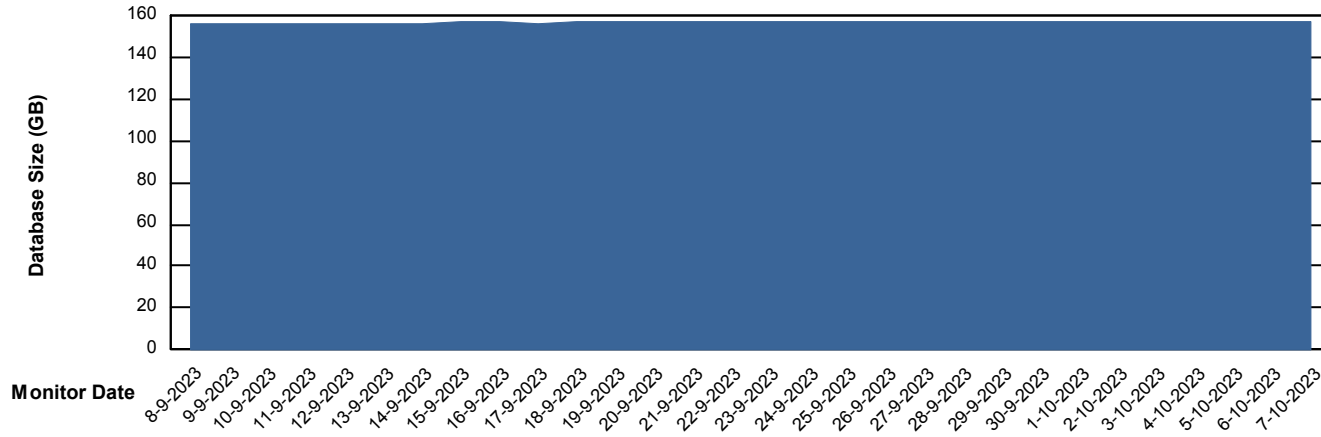
# Weekly SLA Customer Report

Customer AUJ Production  
Database ID 41



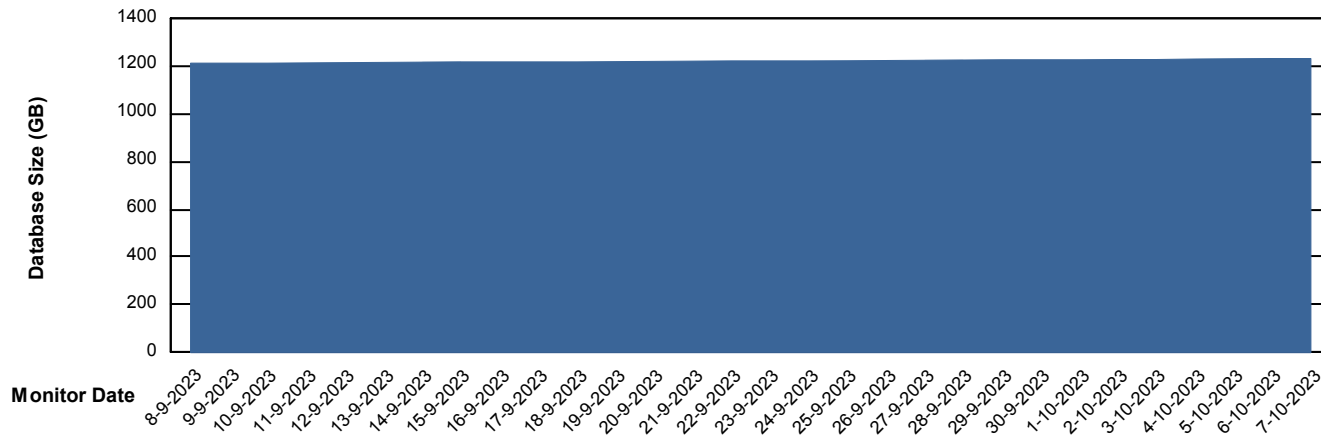
DATABASE SIZE AUJ Prod. BI DB (PABSBI1 server)

### Database growth over last month



DATABASE SIZE AUJ\_DB1\_Primary

### Database growth over last month



# Weekly SLA Customer Report

Customer AUJ Production  
Database ID 41



## Database Tablespace AUJ Prod. BI DB (PABSBI1 server)

Date	Tablespace Name	Filesize (Gb)	Usedsize (Gb)	Percentage free
7-10-2023	ABSDATA	156	129	18
	INDX	32	26	19
6-10-2023	ABSDATA	156	129	18
	INDX	32	26	19
5-10-2023	ABSDATA	156	129	18
	INDX	32	26	19
4-10-2023	ABSDATA	156	129	18
	INDX	32	26	19
3-10-2023	ABSDATA	156	129	18
	INDX	32	26	19
2-10-2023	ABSDATA	156	128	18
	INDX	32	26	19
1-10-2023	ABSDATA	156	128	18
	INDX	32	26	19

# Weekly SLA Customer Report

Customer AUJ Production  
 Database ID 41



Database Tablespace AUJ\_DB1\_Primary

Date	Tablespace Name	Filesize (Gb)	Usedsize (Gb)	Percentage free
7-10-2023	ABSDATA	694	584	16
	INDX	765	638	17
6-10-2023	ABSDATA	694	584	16
	INDX	765	638	17
5-10-2023	ABSDATA	694	584	16
	INDX	765	638	17
4-10-2023	ABSDATA	694	584	16
	INDX	765	637	17
3-10-2023	ABSDATA	694	583	16
	INDX	765	637	17
2-10-2023	ABSDATA	694	582	16
	INDX	765	636	17
1-10-2023	ABSDATA	694	582	16
	INDX	765	636	17

BI Status and last ETL error for AUJ Prod. BI DB (PABSBI1 server)

	ma 2/10/2023	di 3/10/2023	wo 4/10/2023	do 5/10/2023	vr 6/10/2023	za 7/10/2023
<b>ABS DataWarehouse ETL Health</b>	OK	OK	OK	OK	OK	OK
<b>ABS DWHStaging ETL Health</b>	OK	OK	OK	OK	OK	OK

# Weekly SLA Customer Report

Customer AUJ Production  
Database ID 41



BI last ETL error for	AUJ Prod. BI DB (PABSBI1 server)
di, 3-10-2023	None
do, 5-10-2023	None
za, 7-10-2023	None
ma, 2-10-2023	None
zo, 1-10-2023	None
vr, 6-10-2023	None
ma, 2-10-2023	None
za, 7-10-2023	None
zo, 1-10-2023	None
di, 3-10-2023	None
vr, 6-10-2023	None
wo, 4-10-2023	None
wo, 4-10-2023	None
do, 5-10-2023	None

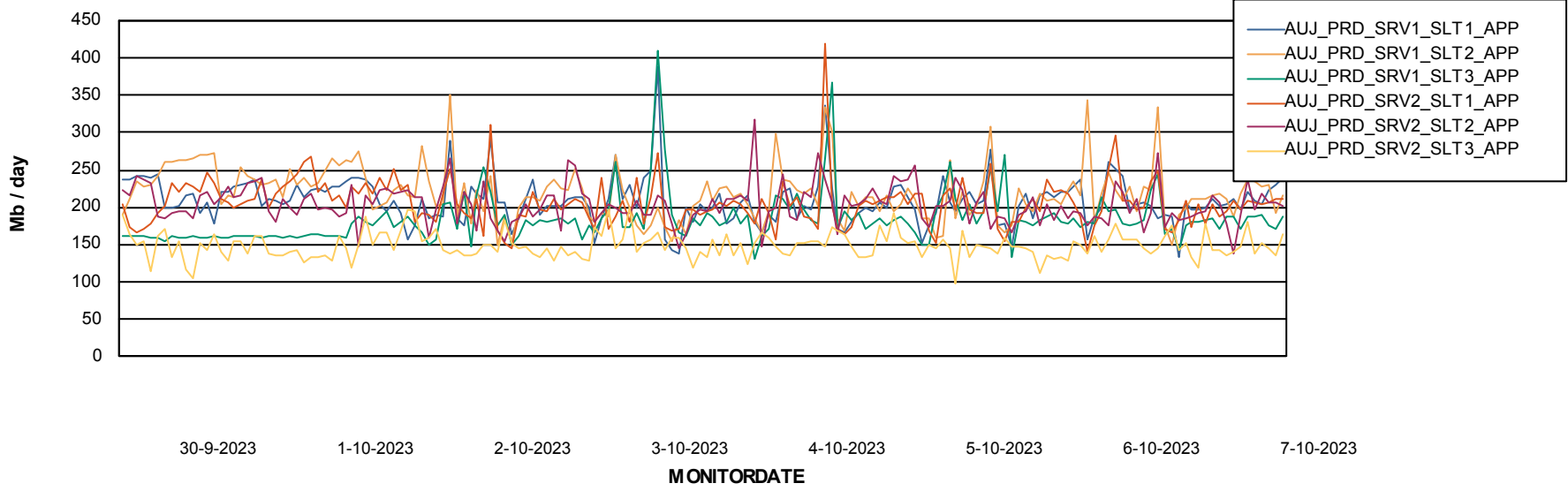
# Weekly SLA Customer Report

Customer AUJ Production  
Database ID 41

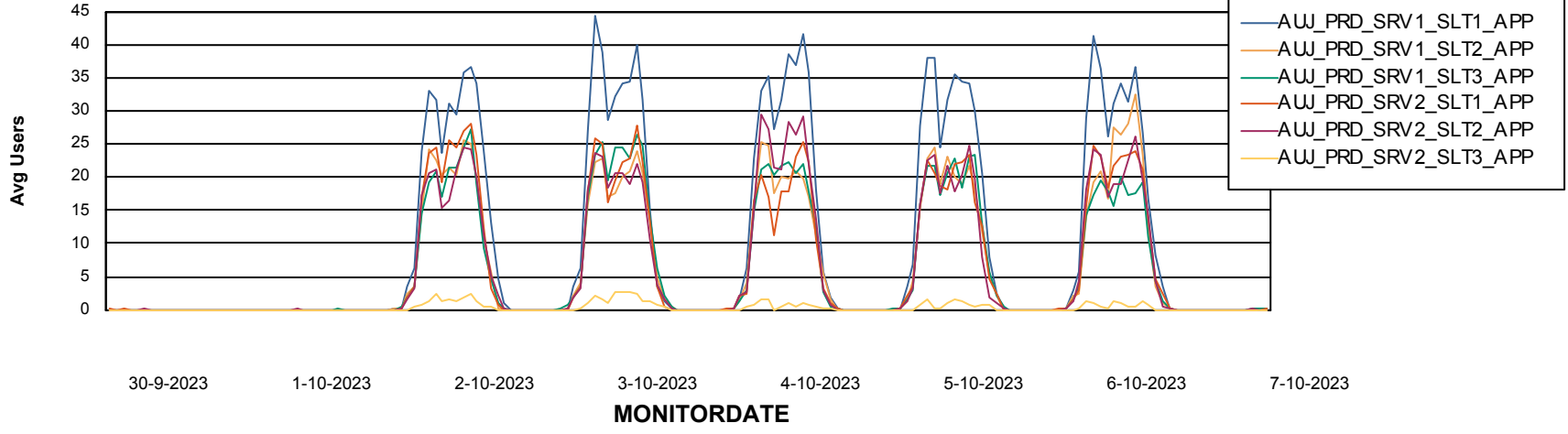


## ABSSolute Application Server Services

### Avg memory used per ABS Server Service



### Avg users per day per ABS server



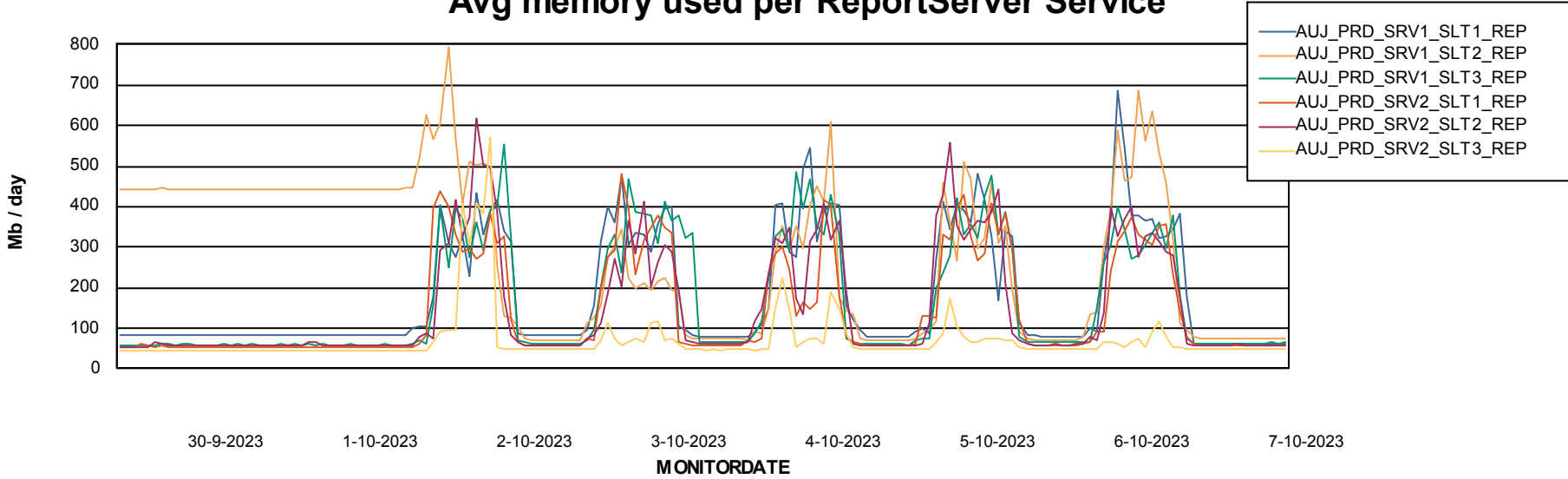
# Weekly SLA Customer Report

Customer AUJ Production  
Database ID 41



## ABSSolute Application ReportServer Services

### Avg memory used per ReportServer Service



### Disaster per ABS component

