

# Weekly SLA Customer Report

Customer KLH\_Production (24/7)  
Database ID 139



## Harddisk Usage KLH\_PRD\_SRSAPP01

	Free disk space on / (%)	Total disk space on / (Gb)	Used disk space on / (Gb)	Free disk space on /abs (%)	Total disk space on /abs (Gb)	Used disk space on /abs (Gb)
30-9-2023	77	50	11	67	50	17
29-9-2023	77	50	11	56	50	22
28-9-2023	77	50	11	43	50	29
27-9-2023	77	50	11	43	50	28
26-9-2023	77	50	11	43	50	28
25-9-2023	77	50	11	43	50	28
24-9-2023	77	50	11	43	50	28

## Harddisk Usage KLH\_PRD\_SRSAPP02

	Free disk space on / (%)	Total disk space on / (Gb)	Used disk space on / (Gb)	Free disk space on /abs (%)	Total disk space on /abs (Gb)	Used disk space on /abs (Gb)
30-9-2023	78	50	11	71	50	14
29-9-2023	78	50	11	61	50	19
28-9-2023	78	50	11	48	50	26
27-9-2023	78	50	11	49	50	26
26-9-2023	78	50	11	49	50	26
25-9-2023	78	50	11	49	50	25
24-9-2023	78	50	11	49	50	25

# Weekly SLA Customer Report

Customer KLH\_Production (24/7)  
Database ID 139



## Harddisk Usage KLH\_PRD\_SRSBI01

	Free disk space on / (%)	Total disk space on / (Gb)	Used disk space on / (Gb)	Free disk space on /abs/dumpf	Total disk space on /abs/dumpf	Used disk space on /abs/dumpf	Free disk space on /u01 (%)	Total disk space on /u01 (Gb)	Used disk space on /u01 (Gb)
30-9-2023	42	50	29	33	500	334	62	50	19
29-9-2023	42	50	29	34	500	330	62	50	19
28-9-2023	42	50	29	27	500	363	62	50	19
27-9-2023	42	50	29	34	500	331	62	50	19
26-9-2023	42	50	29	25	500	375	62	50	19
25-9-2023	42	50	29	31	500	343	62	50	19
24-9-2023	42	50	29	23	500	385	62	50	19

## Harddisk Usage KLH\_PRD\_SRSBIDB01

	Free disk space on / (%)	Total disk space on / (Gb)	Used disk space on / (Gb)	Free disk space on /abs/dumpf	Total disk space on /abs/dumpf	Used disk space on /abs/dumpf	Free disk space on /u01 (%)	Total disk space on /u01 (Gb)	Used disk space on /u01 (Gb)
30-9-2023	74	100	26	33	500	334	57	400	174
29-9-2023	74	100	26	34	500	330	57	400	172
28-9-2023	74	100	26	27	500	363	57	400	172
27-9-2023	74	100	26	34	500	331	57	400	173
26-9-2023	74	100	26	25	500	375	55	400	178
25-9-2023	74	100	26	31	500	343	54	400	183
24-9-2023	74	100	26	23	500	385	53	400	188

# Weekly SLA Customer Report

Customer KLH\_Production (24/7)  
Database ID 139



## Harddisk Usage KLH\_PRD\_SRSDDB01

	Free disk space on / (%)	Total disk space on / (Gb)	Used disk space on / (Gb)	Free disk space on /abs/dumpf	Total disk space on /abs/dumpf	Used disk space on /abs/dumpf	Free disk space on /u01 (%)	Total disk space on /u01 (Gb)	Used disk space on /u01 (Gb)
30-9-2023	74	100	26	33	500	334	16	400	337
29-9-2023	74	100	26	34	500	330	18	400	327
28-9-2023	74	100	26	27	500	363	17	400	330
27-9-2023	74	100	26	34	500	331	21	400	316
26-9-2023	74	100	26	25	500	375	18	400	326
25-9-2023	74	100	26	31	500	343	21	400	317
24-9-2023	74	100	26	23	500	385	16	400	335

## Harddisk Usage KLH\_PRD\_SRSDDB02

	Free disk space on / (%)	Total disk space on / (Gb)	Used disk space on / (Gb)	Free disk space on /abs/dumpf	Total disk space on /abs/dumpf	Used disk space on /abs/dumpf	Free disk space on /u01 (%)	Total disk space on /u01 (Gb)	Used disk space on /u01 (Gb)
30-9-2023	74	100	26	33	500	334	18	400	326
29-9-2023	74	100	26	34	500	330	20	400	318
28-9-2023	74	100	26	27	500	363	21	400	316
27-9-2023	74	100	26	34	500	331	22	400	312
26-9-2023	74	100	26	25	500	375	22	400	312
25-9-2023	74	100	26	31	500	343	22	400	311
24-9-2023	74	100	26	23	500	385	22	400	312

# Weekly SLA Customer Report

Customer KLH\_Production (24/7)  
 Database ID 139



Harddisk Usage KLH\_PRD\_SRSNFS01

	Free disk space on / (%)	Total disk space on / (Gb)	Used disk space on / (Gb)	Free disk space on /var/nfs/ex	Total disk space on /var/nfs/ex	Used disk space on /var/nfs/ex	Free disk space on /var/nfs/ora	Total disk space on /var/nfs/ora	Used disk space on /var/nfs/ora
30-9-2023	64	30	11	48	100	52	33	500	334
29-9-2023	64	30	11	48	100	52	34	500	330
28-9-2023	64	30	11	48	100	52	27	500	363
27-9-2023	64	30	11	48	100	52	34	500	331
26-9-2023	64	30	11	48	100	52	25	500	375
25-9-2023	64	30	11	48	100	52	31	500	343
24-9-2023	64	30	11	47	100	53	23	500	385

Harddisk Usage KLH\_PRD\_SRSSUPPORT01\_DISTRIB

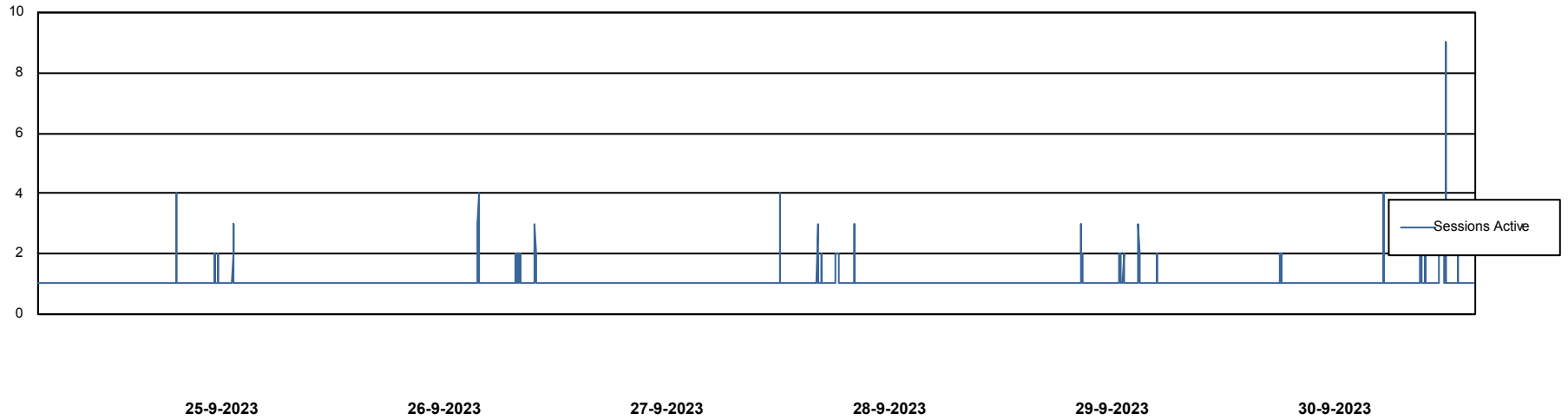
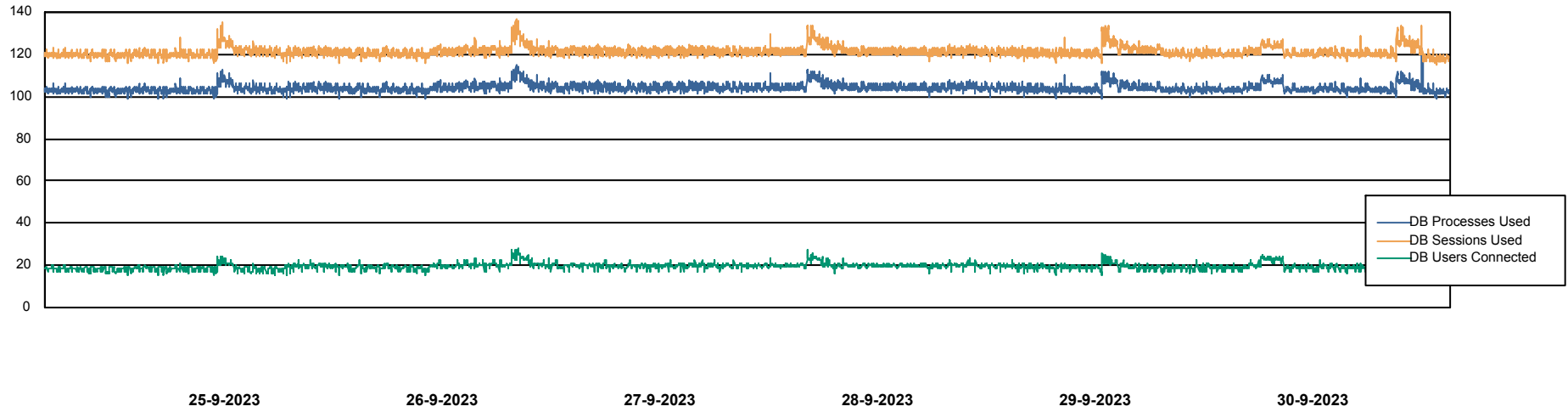
	Free disk space on C: (%)	Total disk space on C: (Gb)	Used disk space on C: (Gb)
30-9-2023	50	100	50
29-9-2023	51	100	49
28-9-2023	51	100	49
27-9-2023	51	100	49
26-9-2023	52	100	48
25-9-2023	52	100	48
24-9-2023	54	100	46

# Weekly SLA Customer Report

Customer KLH\_Production (24/7)  
Database ID 139



## Database Performance KLHDB\_BI

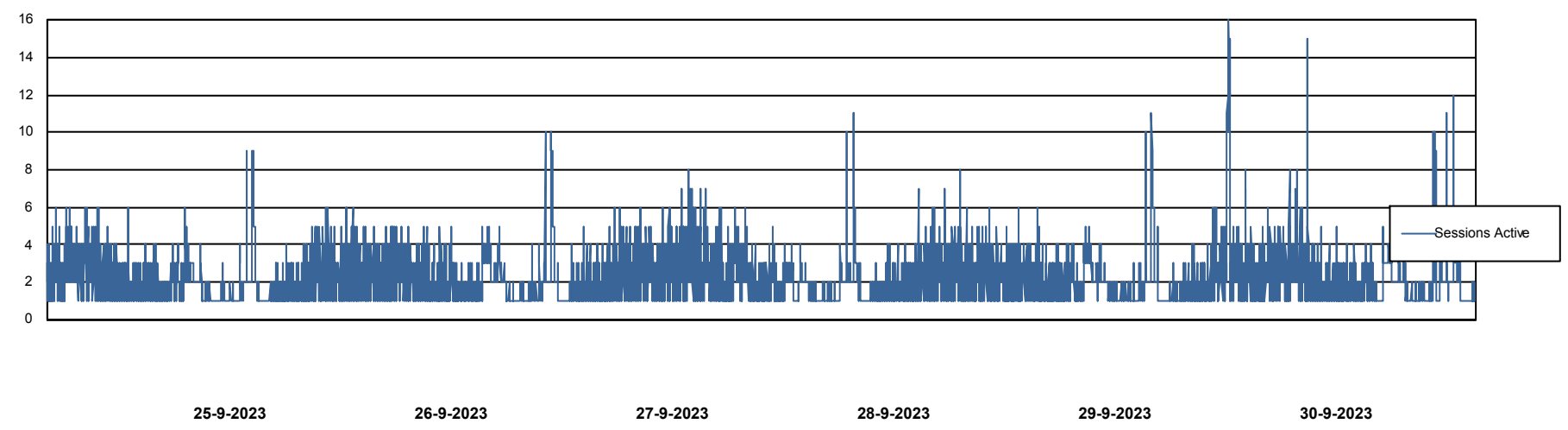
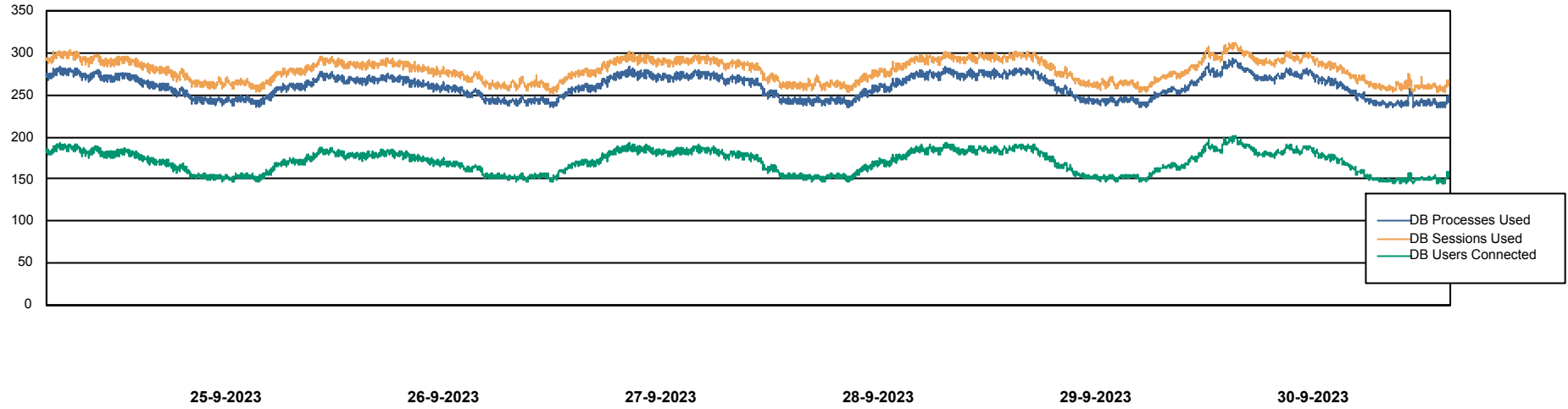


# Weekly SLA Customer Report

Customer KLH\_Production (24/7)  
Database ID 139



## Database Performance KLHDB\_Production



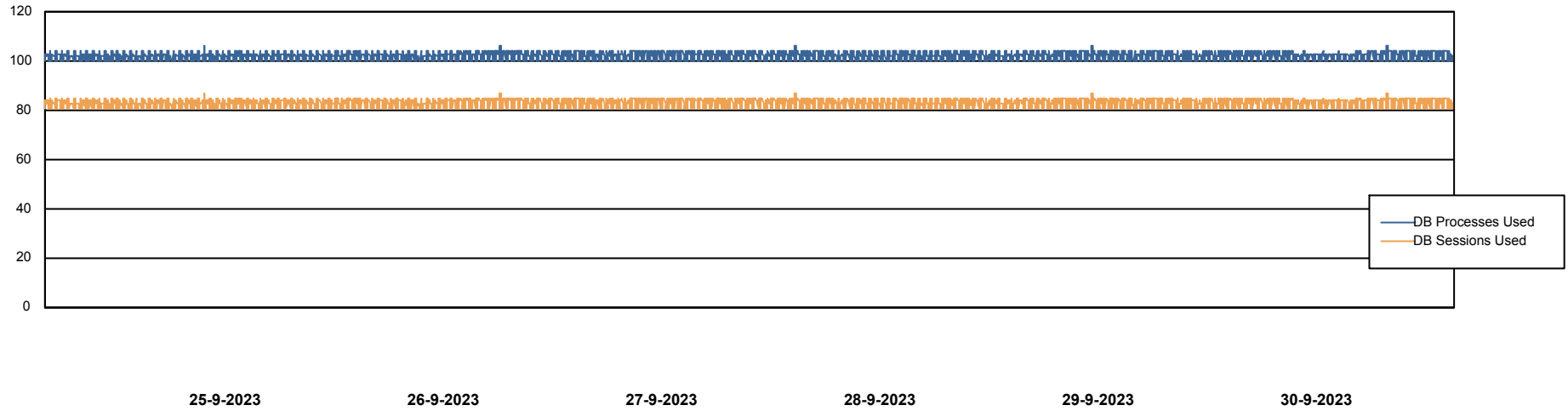
# Weekly SLA Customer Report

Customer KLH\_Production (24/7)  
Database ID 139



## Database Performance KLHDB\_Standby

DB Processes Max 0  
DB Processes Max 1,000  
DB Processes Max 4



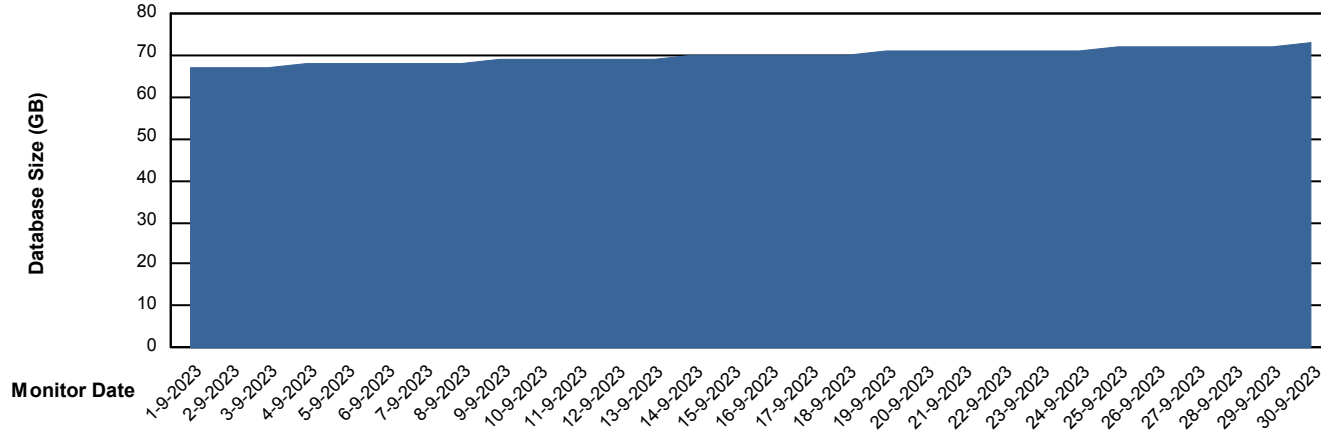
# Weekly SLA Customer Report

Customer KLH\_Production (24/7)  
Database ID 139



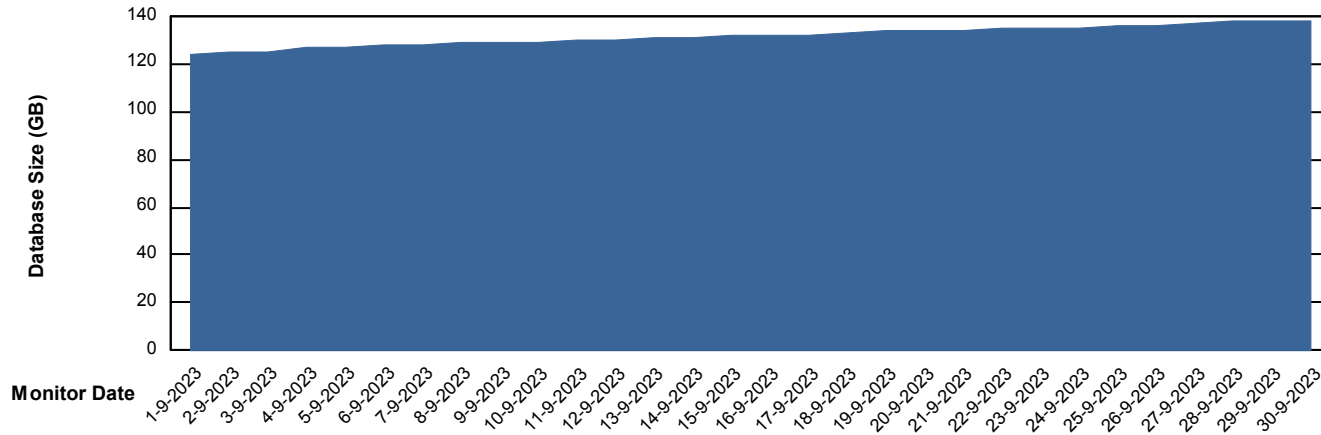
DATABASE SIZE KLHDB\_BI

## Database growth over last month



DATABASE SIZE KLHDB\_Production

## Database growth over last month



# Weekly SLA Customer Report

Customer KLH\_Production (24/7)  
Database ID 139



## Database Tablespace KLHDB\_BI

Date	Tablespace Name	Filesize (Gb)	Usedsize (Gb)	Percentage free
30-9-2023	ABSDATA	28	22	19
	INDX	43	36	16
29-9-2023	ABSDATA	28	22	19
	INDX	43	35	17
28-9-2023	ABSDATA	28	22	19
	INDX	43	35	17
27-9-2023	ABSDATA	28	22	19
	INDX	43	35	18
26-9-2023	ABSDATA	28	22	20
	INDX	43	35	18
25-9-2023	ABSDATA	28	22	20
	INDX	43	35	18
24-9-2023	ABSDATA	28	22	20
	INDX	43	35	19

# Weekly SLA Customer Report

Customer KLH\_Production (24/7)  
 Database ID 139



Database Tablespace KLHDB\_Production

Date	Tablespace Name	Filesize (Gb)	Usedsize (Gb)	Percentage free
30-9-2023	ABSDATA	145	122	16
	INDX	8	2	69
29-9-2023	ABSDATA	145	122	16
	INDX	8	2	69
28-9-2023	ABSDATA	145	121	16
	INDX	8	2	69
27-9-2023	ABSDATA	145	121	17
	INDX	8	2	69
26-9-2023	ABSDATA	145	120	17
	INDX	8	2	69
25-9-2023	ABSDATA	141	120	15
	INDX	8	2	69
24-9-2023	ABSDATA	141	119	16
	INDX	8	2	70

BI Status and last ETL error for KLHDB\_BI

	ma 25/9/2023	di 26/9/2023	wo 27/9/2023	do 28/9/2023	vr 29/9/2023	za 30/9/2023
<b>ABS DataWarehouse ETL Health</b>	OK	OK	OK	OK	OK	OK
<b>ABS DWHStaging ETL Health</b>	OK	OK	OK	OK	OK	OK

# Weekly SLA Customer Report

Customer KLH\_Production (24/7)  
Database ID 139



BI last ETL error for	KLHDB_BI
ma, 25-09-2023	None
wo, 27-09-2023	None
vr, 29-09-2023	None
zo, 24-09-2023	None
wo, 27-09-2023	None
za, 30-09-2023	None
ma, 25-09-2023	None
do, 28-09-2023	None
di, 26-09-2023	None
zo, 24-09-2023	None
vr, 29-09-2023	None
do, 28-09-2023	None
za, 30-09-2023	None
di, 26-09-2023	None

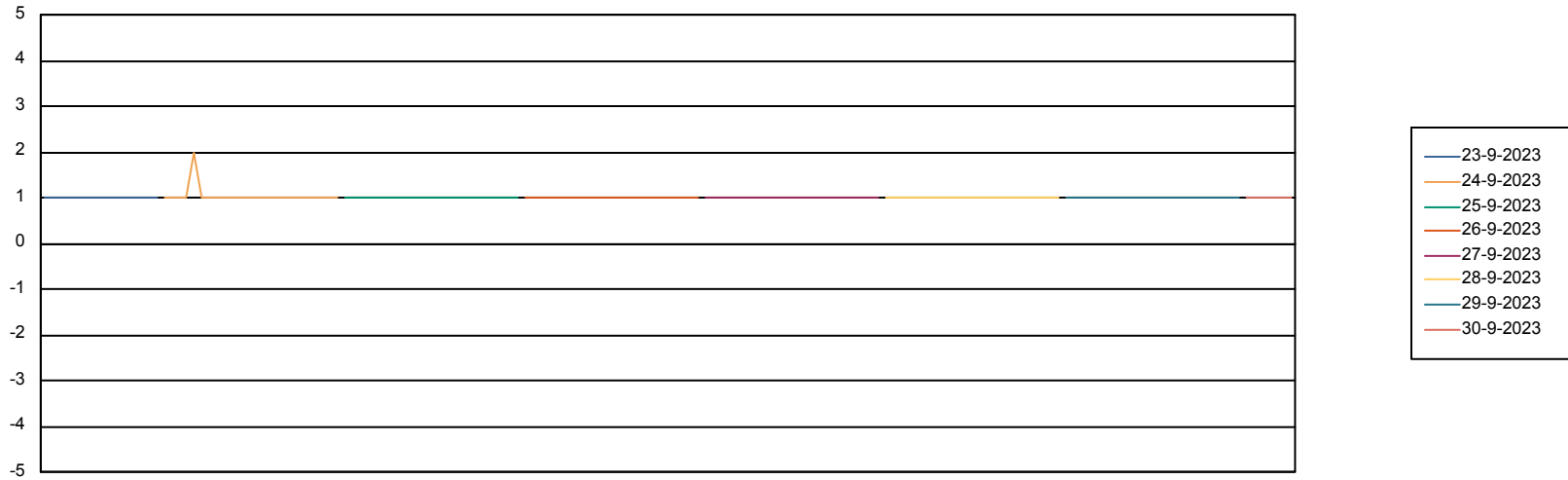
# Weekly SLA Customer Report

Customer KLH\_Production (24/7)  
Database ID 139



Standby Database Health KLH\_Production (24/7)

## Recovery lag for last 7 days



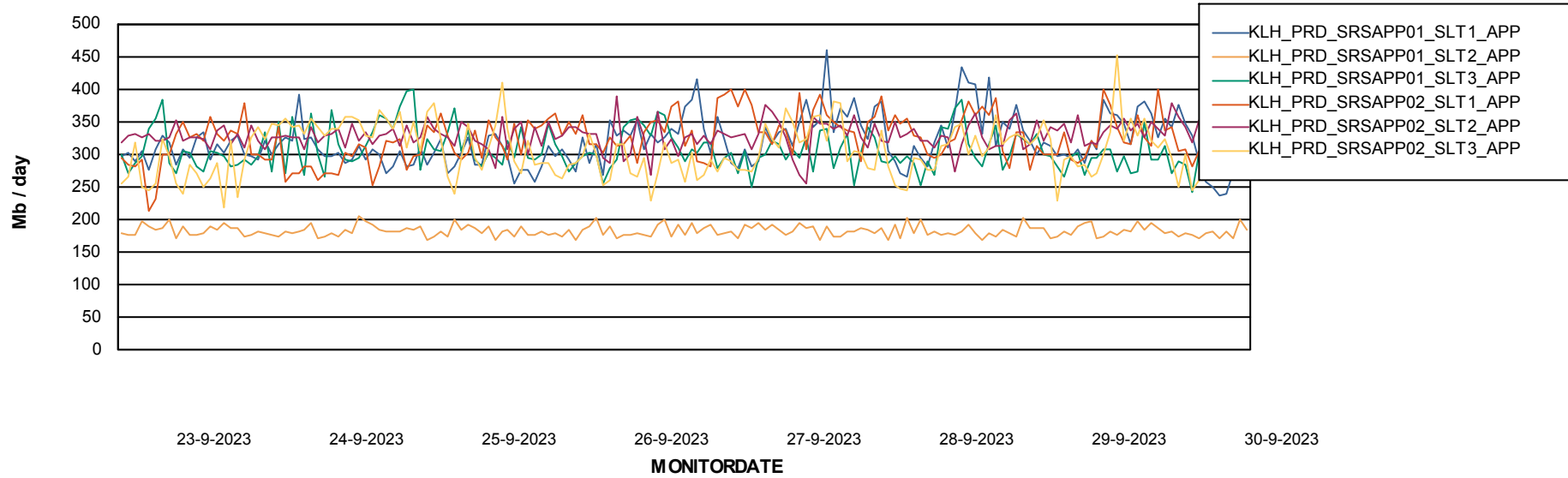
# Weekly SLA Customer Report

Customer KLH\_Production (24/7)  
Database ID 139

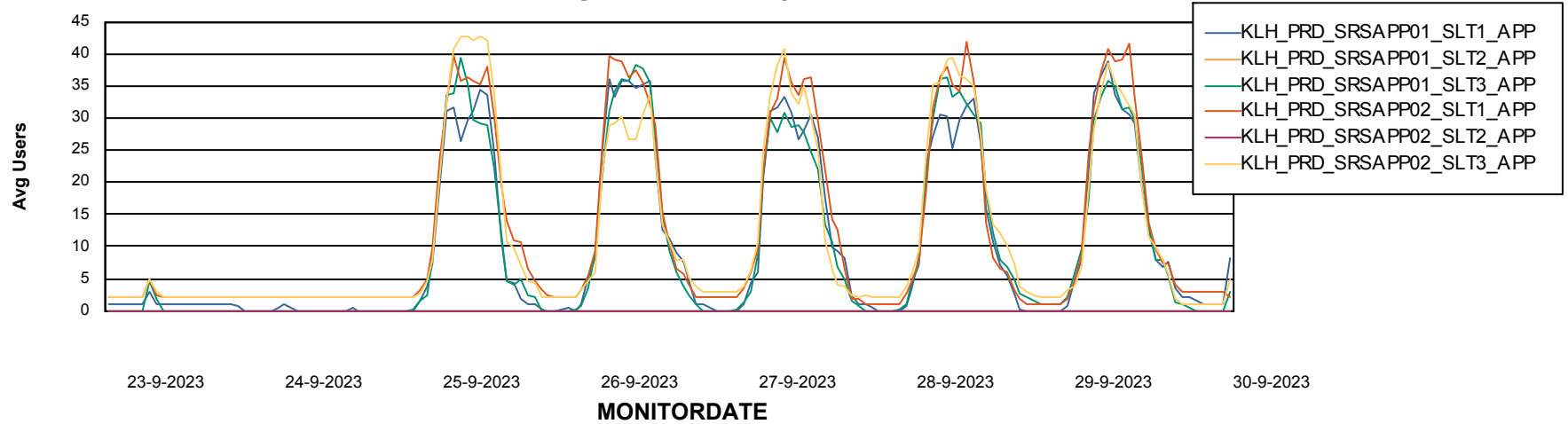


## ABSSolute Application Server Services

### Avg memory used per ABS Server Service



### Avg users per day per ABS server



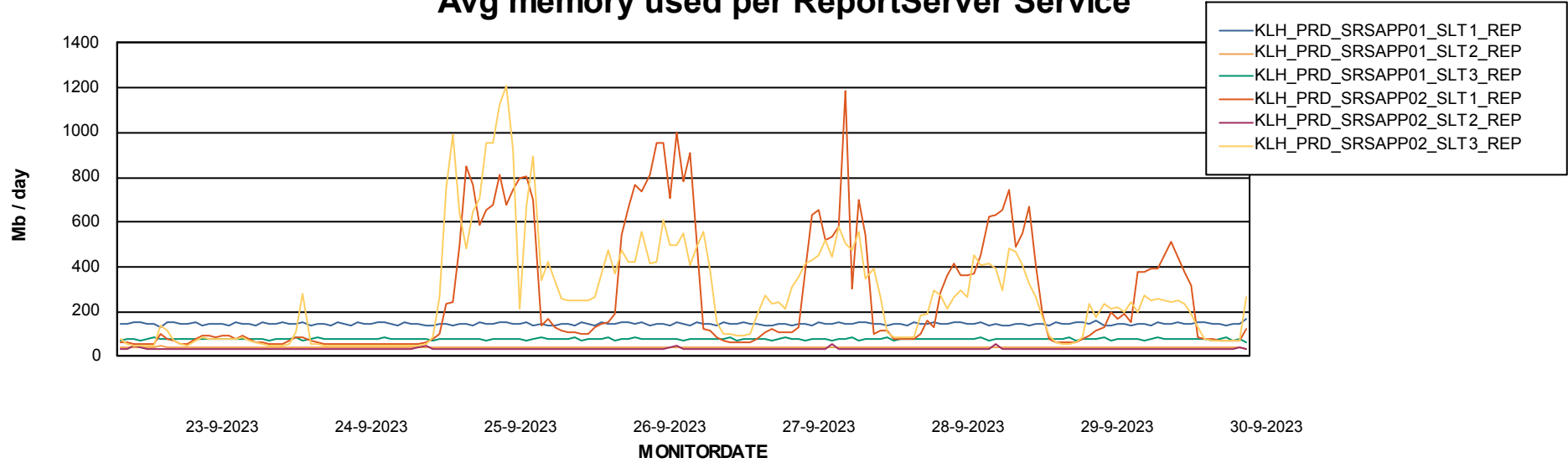
# Weekly SLA Customer Report

Customer KLH\_Production (24/7)  
Database ID 139



## ABSSolute Application ReportServer Services

### Avg memory used per ReportServer Service



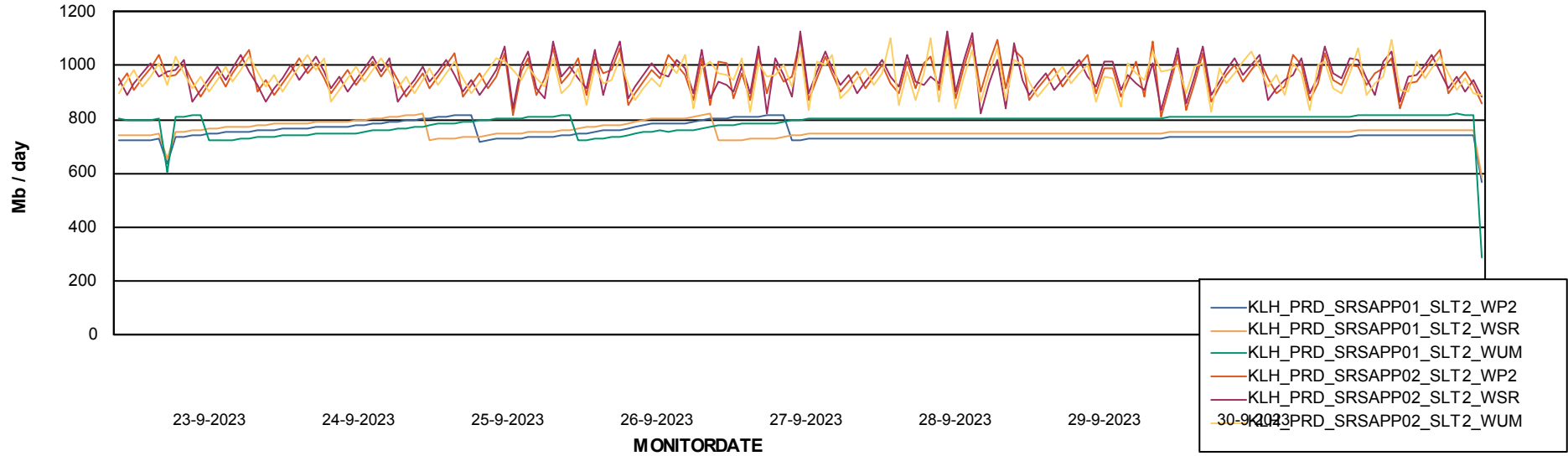
# Weekly SLA Customer Report

Customer KLH\_Production (24/7)  
Database ID 139



## ABSSolute Web Component Services

### Avg memory used per ABS Web component



# Weekly SLA Customer Report

Customer KLH\_Production (24/7)  
Database ID 139



## Disaster per ABS component

