

Weekly SLA Customer Report

Customer KLH_Production (24/7)
 Database ID 139



Harddisk Usage KLH_PRD_SRSAPP01

	Free disk space on / (%)	Total disk space on / (Gb)	Used disk space on / (Gb)	Free disk space on /abs (%)	Total disk space on /abs (Gb)	Used disk space on /abs (Gb)
9-9-2023	77	50	11	54	50	23
8-9-2023	77	50	11	53	50	23
7-9-2023	77	50	11	54	50	23
6-9-2023	77	50	11	54	50	23
5-9-2023	77	50	11	54	50	23
4-9-2023	77	50	11	54	50	23
3-9-2023	77	50	11	55	50	23

Harddisk Usage KLH_PRD_SRSAPP02

	Free disk space on / (%)	Total disk space on / (Gb)	Used disk space on / (Gb)	Free disk space on /abs (%)	Total disk space on /abs (Gb)	Used disk space on /abs (Gb)
9-9-2023	78	50	11	50	50	25
8-9-2023	78	50	11	50	50	25
7-9-2023	78	50	11	50	50	25
6-9-2023	78	50	11	50	50	25
5-9-2023	78	50	11	50	50	25
4-9-2023	78	50	11	51	50	25
3-9-2023	78	50	11	51	50	25

Weekly SLA Customer Report

Customer KLH_Production (24/7)
 Database ID 139



Harddisk Usage KLH_PRD_SRSBI01

	Free disk space on / (%)	Total disk space on / (Gb)	Used disk space on / (Gb)	Free disk space on /abs/dumpf	Total disk space on /abs/dumpf	Used disk space on /abs/dumpf	Free disk space on /u01 (%)	Total disk space on /u01 (Gb)	Used disk space on /u01 (Gb)
9-9-2023	42	50	29	31	500	344	63	50	19
8-9-2023	42	50	29	33	500	333	63	50	19
7-9-2023	42	50	29	31	500	344	63	50	19
6-9-2023	42	50	29	32	500	340	63	50	19
5-9-2023	42	50	29	32	500	339	63	50	19
4-9-2023	42	50	29	34	500	332	63	50	19
3-9-2023	42	50	29	35	500	325	63	50	19

Harddisk Usage KLH_PRD_SRSBIDB01

	Free disk space on / (%)	Total disk space on / (Gb)	Used disk space on / (Gb)	Free disk space on /abs/dumpf	Total disk space on /abs/dumpf	Used disk space on /abs/dumpf	Free disk space on /u01 (%)	Total disk space on /u01 (Gb)	Used disk space on /u01 (Gb)
9-9-2023	74	100	26	31	500	344	52	400	192
8-9-2023	74	100	26	33	500	333	52	400	192
7-9-2023	74	100	26	31	500	344	53	400	190
6-9-2023	74	100	26	32	500	340	52	400	191
5-9-2023	74	100	26	32	500	339	52	400	190
4-9-2023	74	100	26	34	500	332	53	400	190
3-9-2023	74	100	26	35	500	325	53	400	188

Weekly SLA Customer Report

Customer KLH_Production (24/7)
 Database ID 139



Harddisk Usage KLH_PRD_SRSDDB01

	Free disk space on / (%)	Total disk space on / (Gb)	Used disk space on / (Gb)	Free disk space on /abs/dumpf	Total disk space on /abs/dumpf	Used disk space on /abs/dumpf	Free disk space on /u01 (%)	Total disk space on /u01 (Gb)	Used disk space on /u01 (Gb)
9-9-2023	74	100	26	31	500	344	14	400	344
8-9-2023	74	100	26	33	500	333	13	400	347
7-9-2023	74	100	26	31	500	344	10	400	359
6-9-2023	74	100	26	32	500	340	14	400	344
5-9-2023	74	100	26	32	500	339	16	400	337
4-9-2023	74	100	26	34	500	332	15	400	338
3-9-2023	74	100	26	35	500	325	14	400	343

Harddisk Usage KLH_PRD_SRSDDB02

	Free disk space on / (%)	Total disk space on / (Gb)	Used disk space on / (Gb)	Free disk space on /abs/dumpf	Total disk space on /abs/dumpf	Used disk space on /abs/dumpf	Free disk space on /u01 (%)	Total disk space on /u01 (Gb)	Used disk space on /u01 (Gb)
9-9-2023	74	100	26	31	500	344	12	400	351
8-9-2023	74	100	26	33	500	333	11	400	356
7-9-2023	74	100	26	31	500	344	8	400	367
6-9-2023	74	100	26	32	500	340	9	400	364
5-9-2023	74	100	26	32	500	339	10	400	359
4-9-2023	74	100	26	34	500	332	9	400	362
3-9-2023	74	100	26	35	500	325	9	400	365

Weekly SLA Customer Report

Customer KLH_Production (24/7)
 Database ID 139



Harddisk Usage KLH_PRD_SRSNFS01

	Free disk space on / (%)	Total disk space on / (Gb)	Used disk space on / (Gb)	Free disk space on /var/nfs/ex	Total disk space on /var/nfs/ex	Used disk space on /var/nfs/ex	Free disk space on /var/nfs/ora	Total disk space on /var/nfs/ora	Used disk space on /var/nfs/ora
9-9-2023	64	30	11	39	50	30	31	500	344
8-9-2023	64	30	11	39	50	31	33	500	333
7-9-2023	64	30	11	51	50	25	31	500	344
6-9-2023	64	30	11	53	50	23	32	500	340
5-9-2023	64	30	11	54	50	23	32	500	339
4-9-2023	64	30	11	55	50	23	34	500	332
3-9-2023	64	30	11	55	50	23	35	500	325

Harddisk Usage KLH_PRD_SRSSUPPORT01_DISTRIB

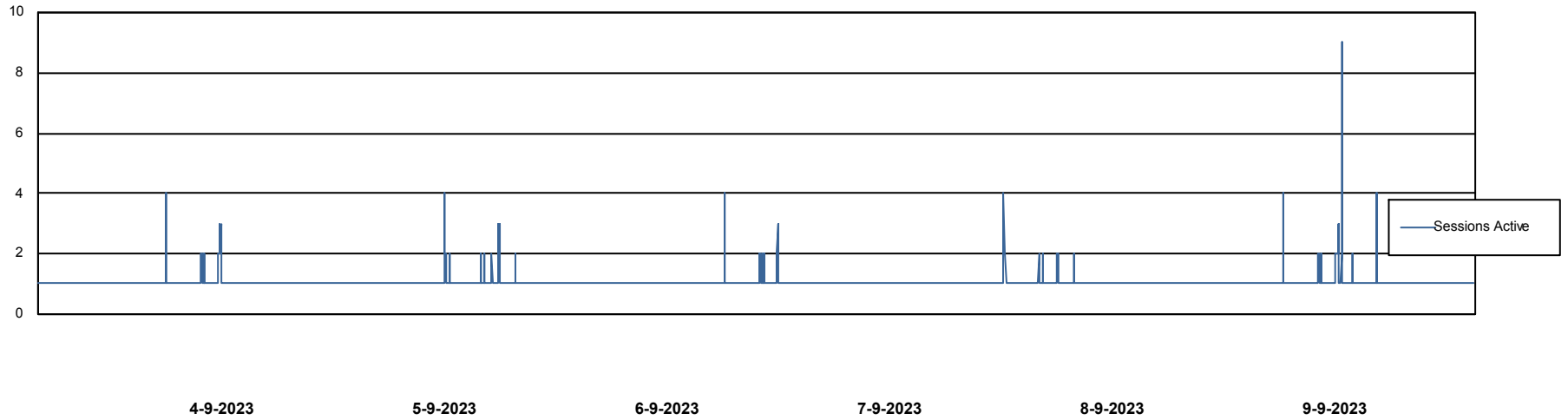
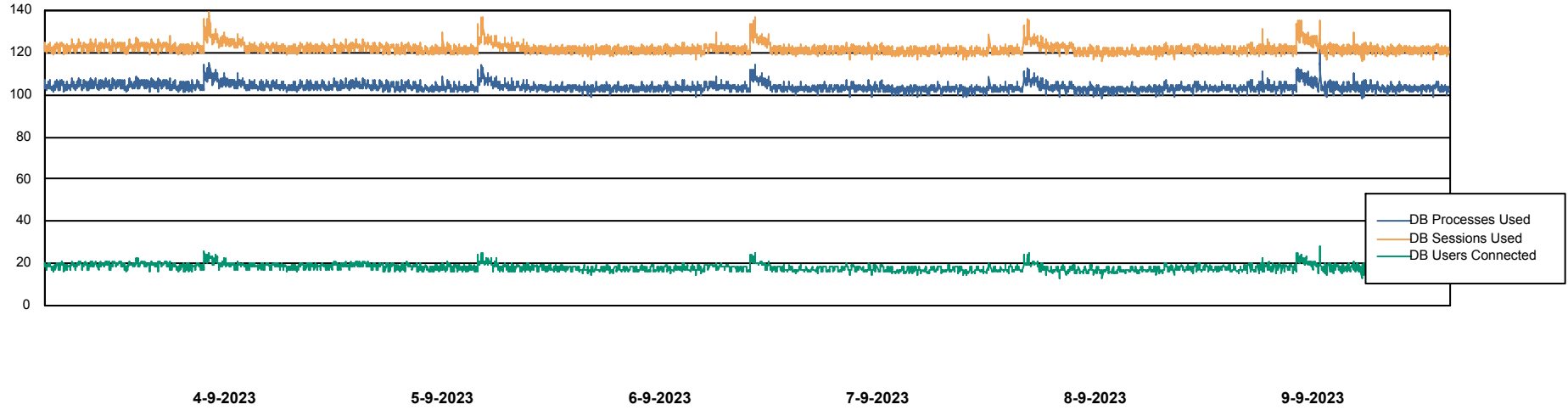
	Free disk space on C: (%)	Total disk space on C: (Gb)	Used disk space on C: (Gb)
9-9-2023	62	100	38
8-9-2023	62	100	38
7-9-2023	58	100	42
6-9-2023	62	100	38
5-9-2023	47	100	53
4-9-2023	43	100	57
3-9-2023	43	100	57

Weekly SLA Customer Report

Customer KLH_Production (24/7)
Database ID 139



Database Performance KLHDB_BI

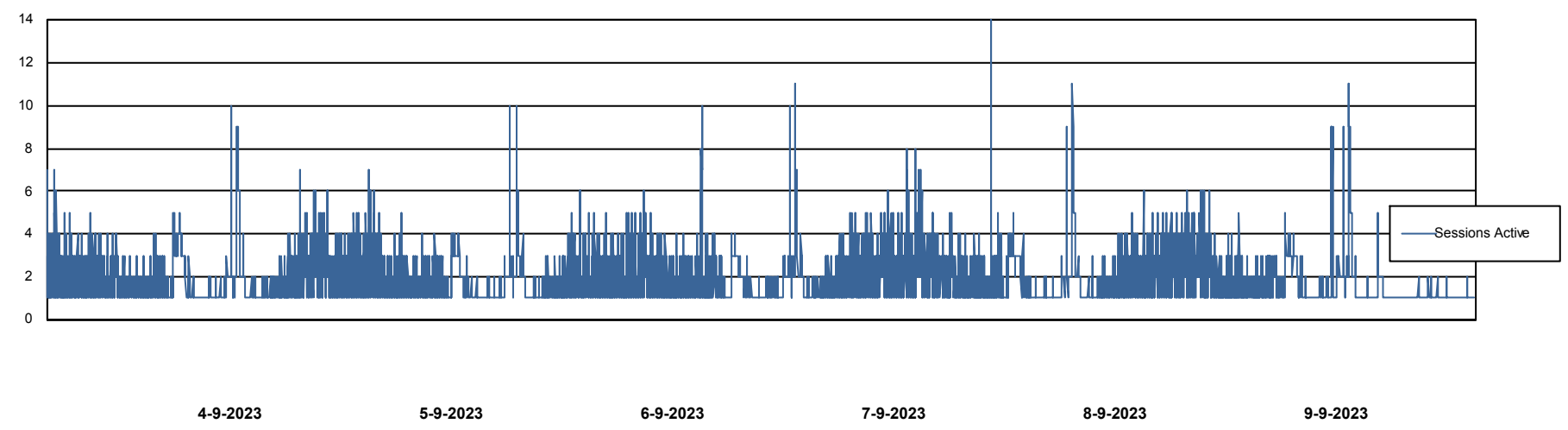
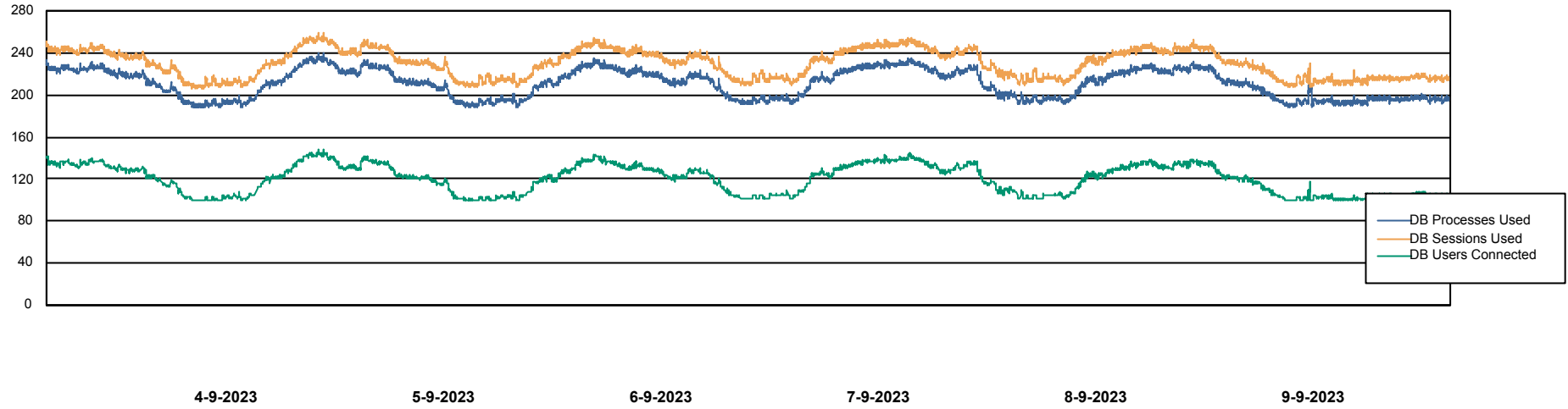


Weekly SLA Customer Report

Customer KLH_Production (24/7)
Database ID 139



Database Performance KLHDB_Production



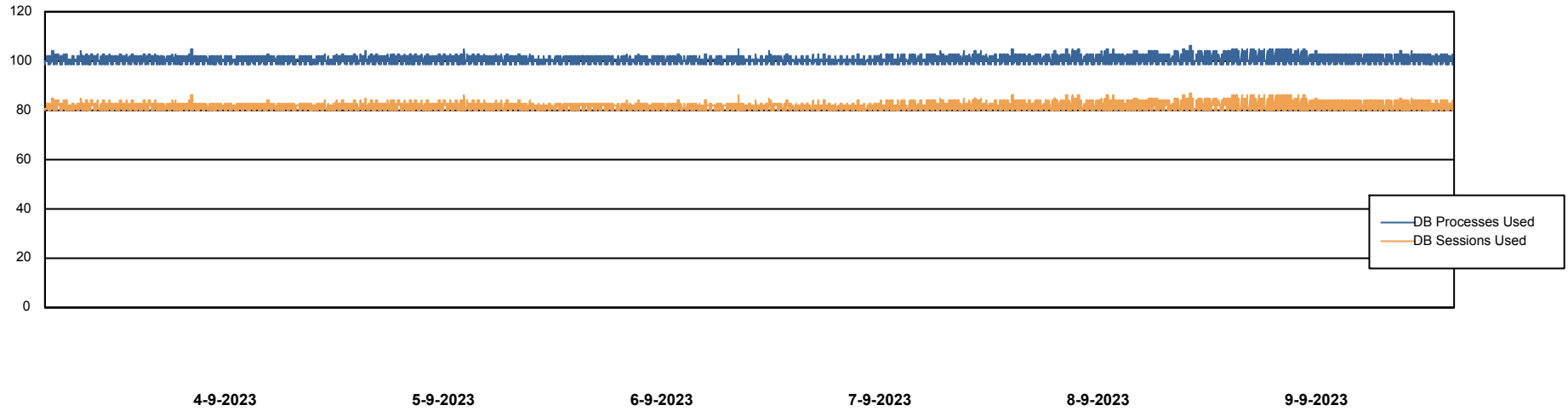
Weekly SLA Customer Report

Customer KLH_Production (24/7)
Database ID 139



Database Performance KLHDB_Standby

DB Processes Max 4
DB Processes Max 1,000
DB Processes Max 0



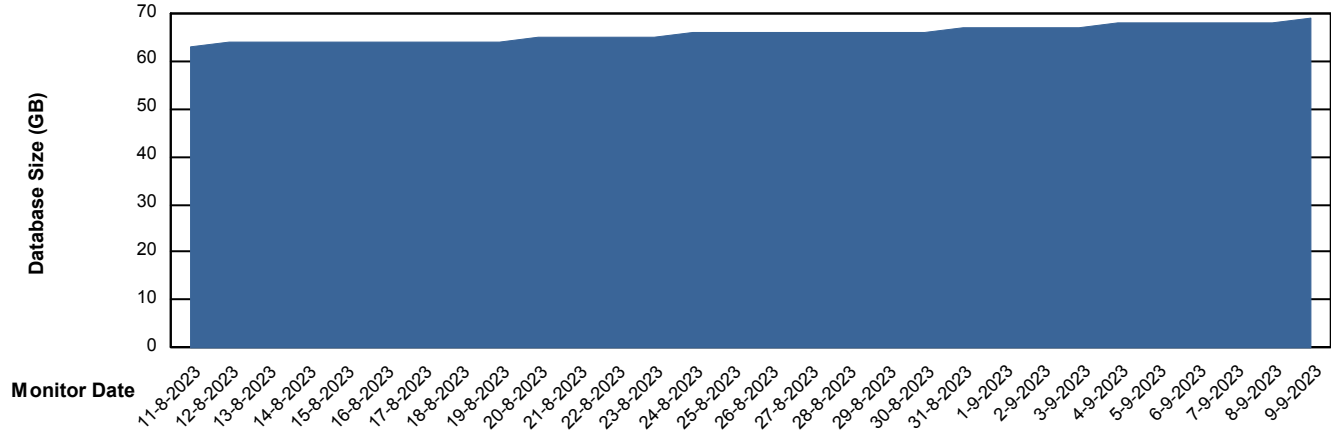
Weekly SLA Customer Report

Customer KLH_Production (24/7)
Database ID 139



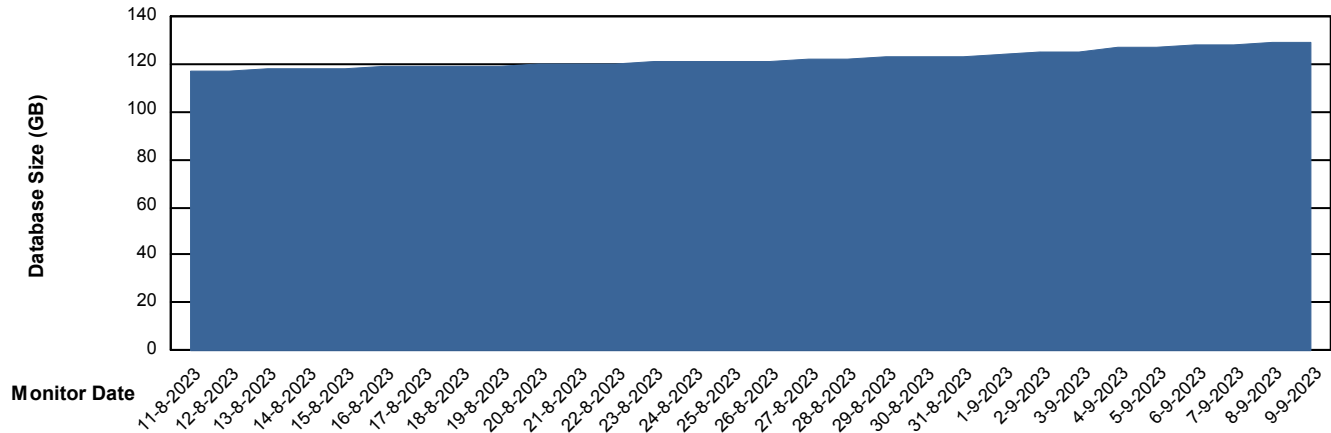
DATABASE SIZE KLHDB_BI

Database growth over last month



DATABASE SIZE KLHDB_Production

Database growth over last month



Weekly SLA Customer Report

Customer KLH_Production (24/7)
Database ID 139



Database Tablespace KLHDB_BI

Date	Tablespace Name	Filesize (Gb)	Usedsize (Gb)	Percentage free
9-9-2023	ABSDATA	26	21	18
	INDX	40	33	18
8-9-2023	ABSDATA	26	21	18
	INDX	40	32	19
7-9-2023	ABSDATA	26	21	19
	INDX	40	32	19
6-9-2023	ABSDATA	26	21	19
	INDX	40	32	19
5-9-2023	ABSDATA	26	21	19
	INDX	40	32	20
4-9-2023	ABSDATA	26	21	19
	INDX	40	32	20
3-9-2023	ABSDATA	26	20	20
	INDX	40	32	20

Weekly SLA Customer Report

Customer KLH_Production (24/7)
 Database ID 139



Database Tablespace KLHDB_Production

Date	Tablespace Name	Filesize (Gb)	Usedsize (Gb)	Percentage free
9-9-2023	ABSDATA	134	113	16
	INDX	8	2	72
8-9-2023	ABSDATA	134	113	16
	INDX	8	2	72
7-9-2023	ABSDATA	134	112	16
	INDX	8	2	72
6-9-2023	ABSDATA	134	112	16
	INDX	8	2	72
5-9-2023	ABSDATA	132	111	16
	INDX	8	2	72
4-9-2023	ABSDATA	132	111	16
	INDX	8	2	73
3-9-2023	ABSDATA	132	109	17
	INDX	8	2	73

BI Status and last ETL error for KLHDB_BI

	ma 4/9/2023	di 5/9/2023	wo 6/9/2023	do 7/9/2023	vr 8/9/2023	za 9/9/2023
ABS DataWarehouse ETL Health	OK	OK	OK	OK	OK	OK
ABS DWHStaging ETL Health	OK	OK	OK	OK	OK	OK

Weekly SLA Customer Report

Customer KLH_Production (24/7)
Database ID 139



BI last ETL error for	KLHDB_BI
zo, 3-09-2023	None
di, 5-09-2023	None
vr, 8-09-2023	None
do, 7-09-2023	None
ma, 4-09-2023	None
vr, 8-09-2023	None
do, 7-09-2023	None
zo, 3-09-2023	None
ma, 4-09-2023	None
za, 9-09-2023	None
wo, 6-09-2023	None
za, 9-09-2023	None
wo, 6-09-2023	None
di, 5-09-2023	None

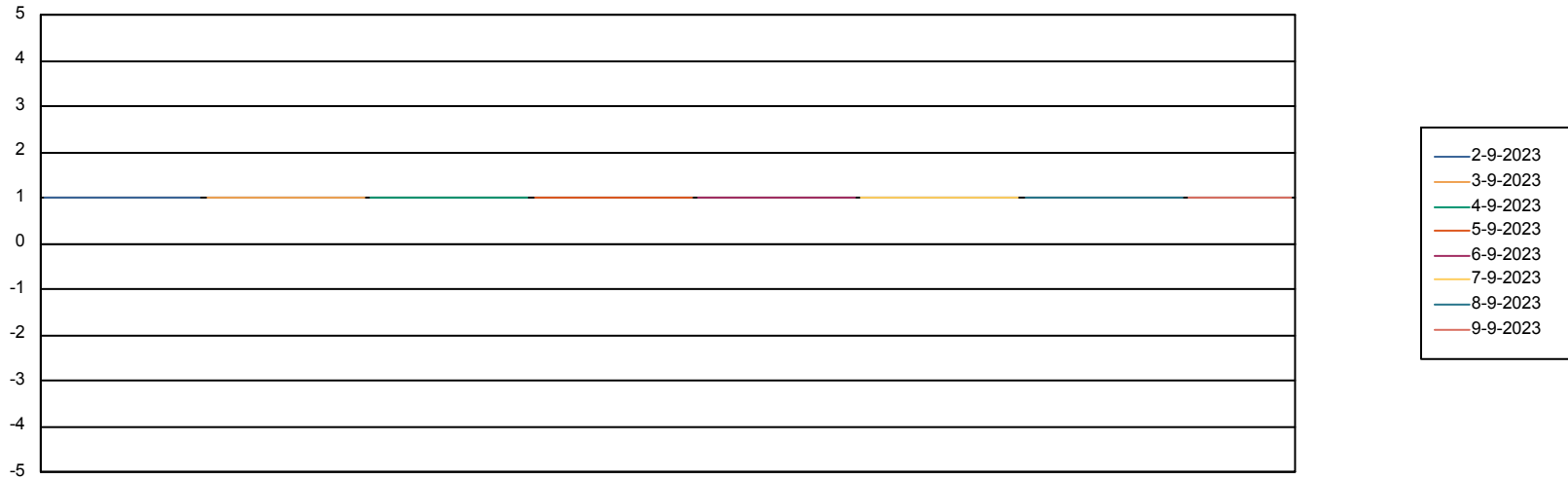
Weekly SLA Customer Report

Customer KLH_Production (24/7)
Database ID 139



Standby Database Health KLH_Production (24/7)

Recovery lag for last 7 days



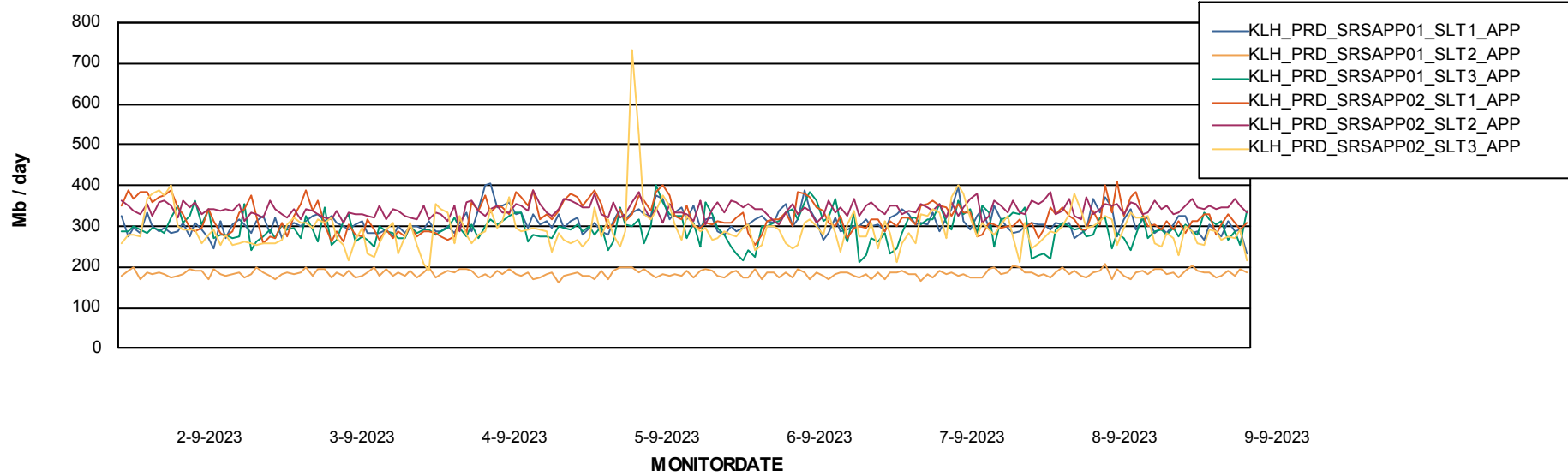
Weekly SLA Customer Report

Customer KLH_Production (24/7)
Database ID 139

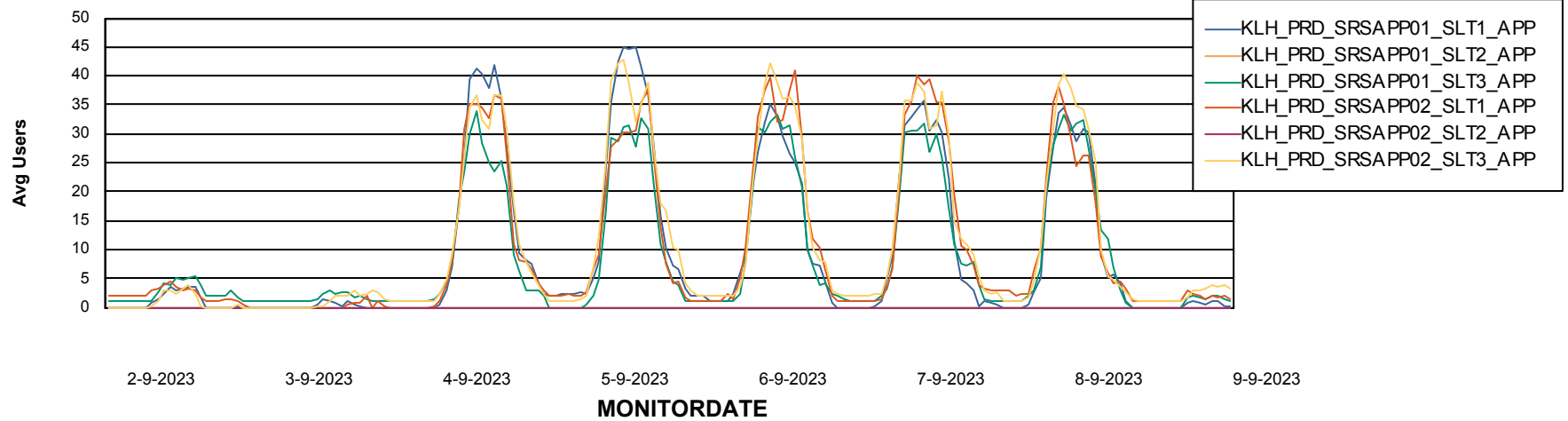


ABSSolute Application Server Services

Avg memory used per ABS Server Service



Avg users per day per ABS server



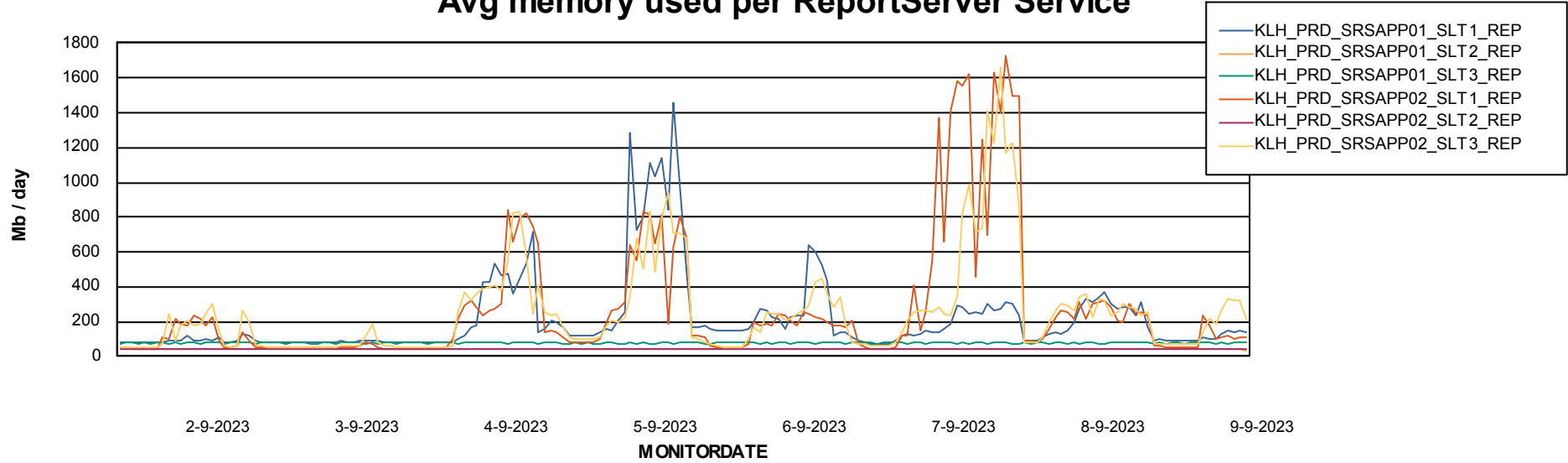
Weekly SLA Customer Report

Customer KLH_Production (24/7)
Database ID 139



ABSSolute Application ReportServer Services

Avg memory used per ReportServer Service



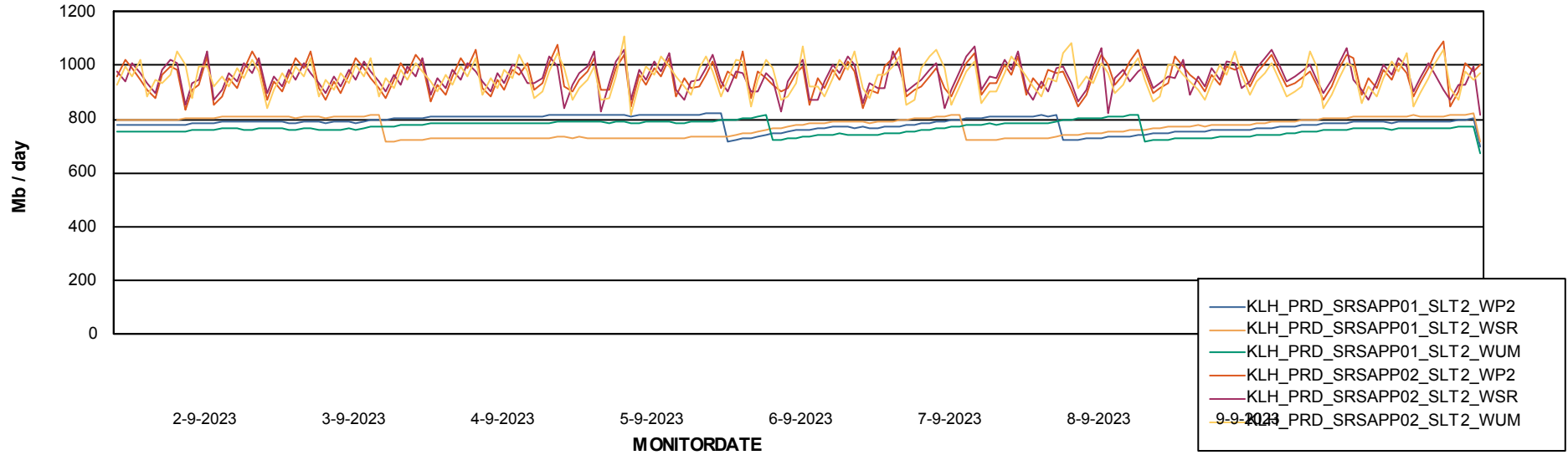
Weekly SLA Customer Report

Customer KLH_Production (24/7)
Database ID 139



ABSolute Web Component Services

Avg memory used per ABS Web component



Weekly SLA Customer Report

Customer KLH_Production (24/7)
Database ID 139



Disaster per ABS component

