

# Weekly SLA Customer Report

Customer AUJ Production  
 Database ID 41



Harddisk Usage AUJ Prod. ABSSolute DB server: PABSDB1

	Free disk space on / (%)	Total disk space on / (Gb)	Used disk space on / (Gb)	Free disk space on /bk (%)	Total disk space on /bk (Gb)	Used disk space on /bk (Gb)	Free disk space on /u02 (%)	Total disk space on /u02 (Gb)	Used disk space on /u02 (Gb)
2-9-2023	86	200	28	58	1,200	498	16	1,799	1,519
1-9-2023	86	200	28	55	1,200	545	16	1,799	1,519
31-8-2023	86	200	28	55	1,200	545	16	1,799	1,519
30-8-2023	86	200	28	55	1,200	544	16	1,799	1,519
29-8-2023	86	200	28	55	1,200	541	16	1,799	1,519
28-8-2023	86	200	28	55	1,200	537	16	1,799	1,519
27-8-2023	86	200	28	55	1,200	535	16	1,799	1,519

Harddisk Usage AUJ Prod. BI DB server: PABSBI1

	Free disk space on / (%)	Total disk space on / (Gb)	Used disk space on / (Gb)	Free disk space on /u02 (%)	Total disk space on /u02 (Gb)	Used disk space on /u02 (Gb)
2-9-2023	87	200	25	67	1,000	327
1-9-2023	87	200	25	68	1,000	323
31-8-2023	87	200	25	68	1,000	323
30-8-2023	87	200	25	68	1,000	323
29-8-2023	87	200	25	68	1,000	322
28-8-2023	87	200	25	68	1,000	322
27-8-2023	87	200	25	67	1,000	326

# Weekly SLA Customer Report

Customer AUJ Production  
 Database ID 41



Harddisk Usage AUJ\_PRD\_ABS\_APP1

	Free disk space on / (%)	Total disk space on / (Gb)	Used disk space on / (Gb)	Free disk space on /abs (%)	Total disk space on /abs (Gb)	Used disk space on /abs (Gb)
2-9-2023	70	40	12	70	85	25
1-9-2023	70	40	12	70	85	25
31-8-2023	70	40	12	71	85	25
30-8-2023	70	40	12	72	85	23
29-8-2023	70	40	12	74	85	22
28-8-2023	70	40	12	75	85	21
27-8-2023	70	40	12	76	85	20

Harddisk Usage AUJ\_PRD\_ABS\_APP2

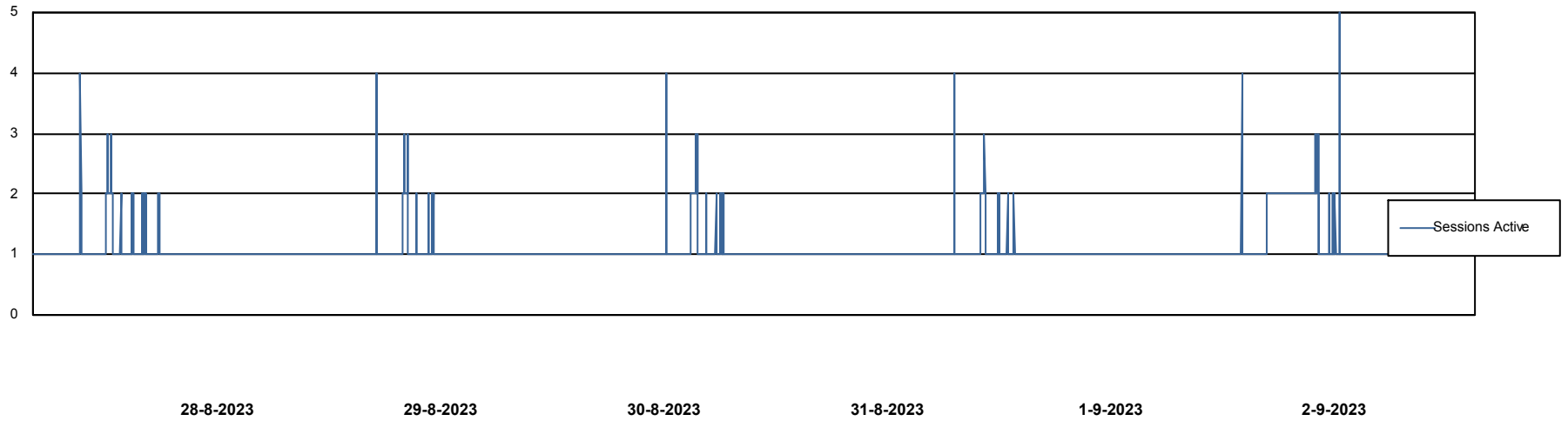
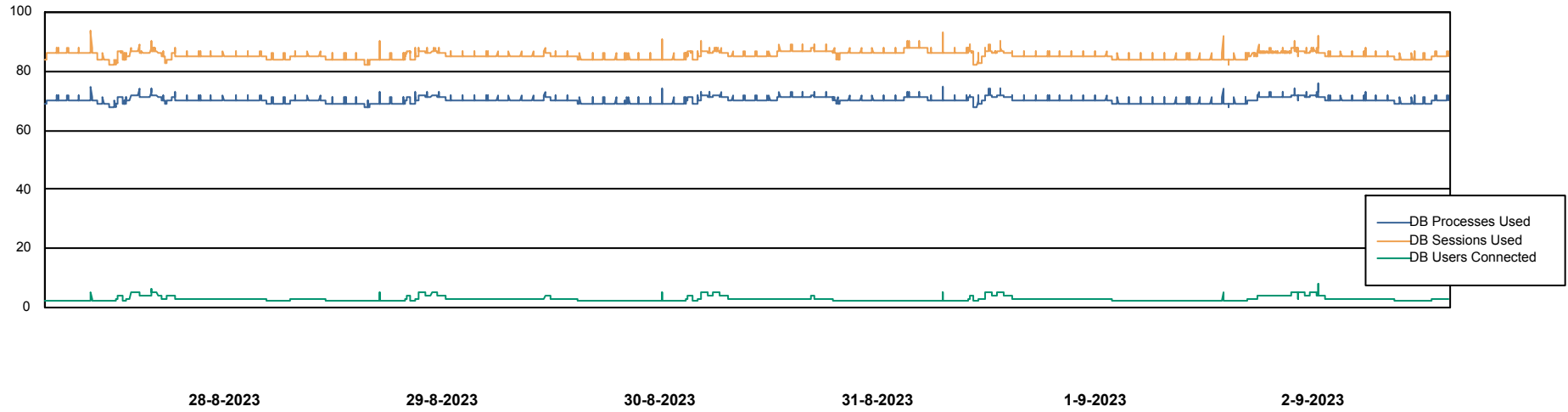
	Free disk space on / (%)	Total disk space on / (Gb)	Used disk space on / (Gb)	Free disk space on /abs (%)	Total disk space on /abs (Gb)	Used disk space on /abs (Gb)
2-9-2023	84	40	7	83	85	14
1-9-2023	84	40	7	84	85	14
31-8-2023	84	40	7	84	85	14
30-8-2023	84	40	7	85	85	13
29-8-2023	84	40	7	86	85	12
28-8-2023	84	40	7	86	85	12
27-8-2023	84	40	7	87	85	11

# Weekly SLA Customer Report

Customer AUJ Production  
Database ID 41



## Database Performance AUJ Prod. BI DB (PABSBI1 server)

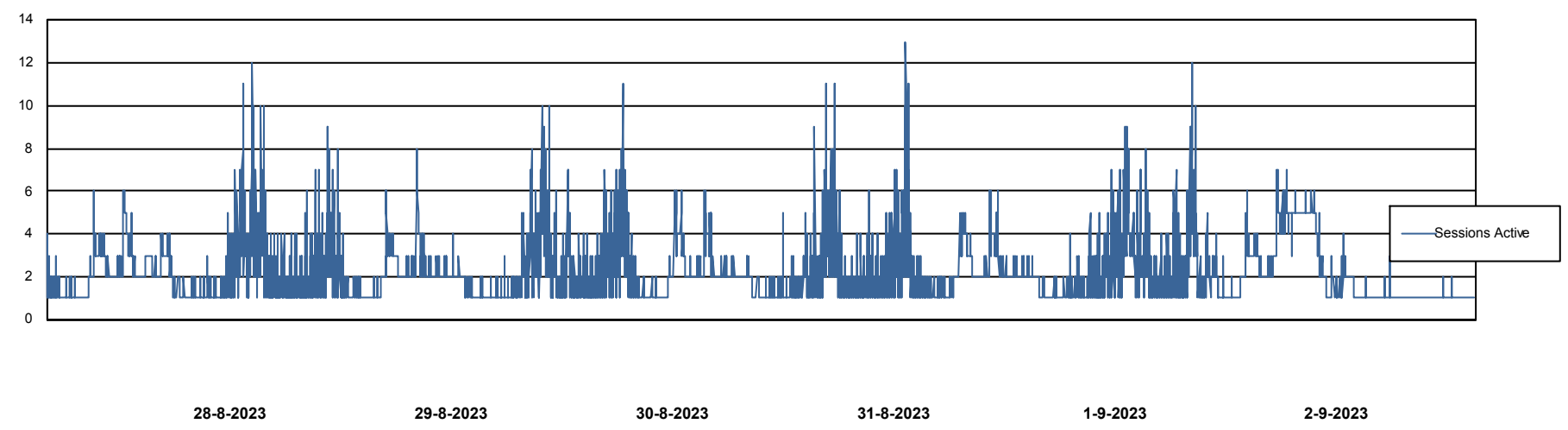
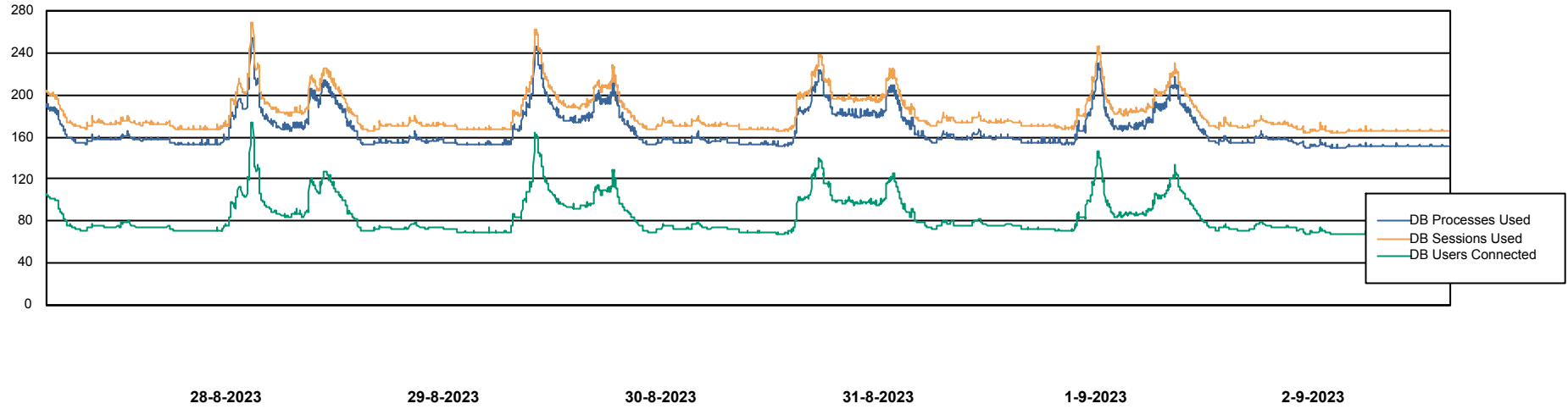


# Weekly SLA Customer Report

Customer AUJ Production  
Database ID 41



## Database Performance AUJ\_DB1\_Primary



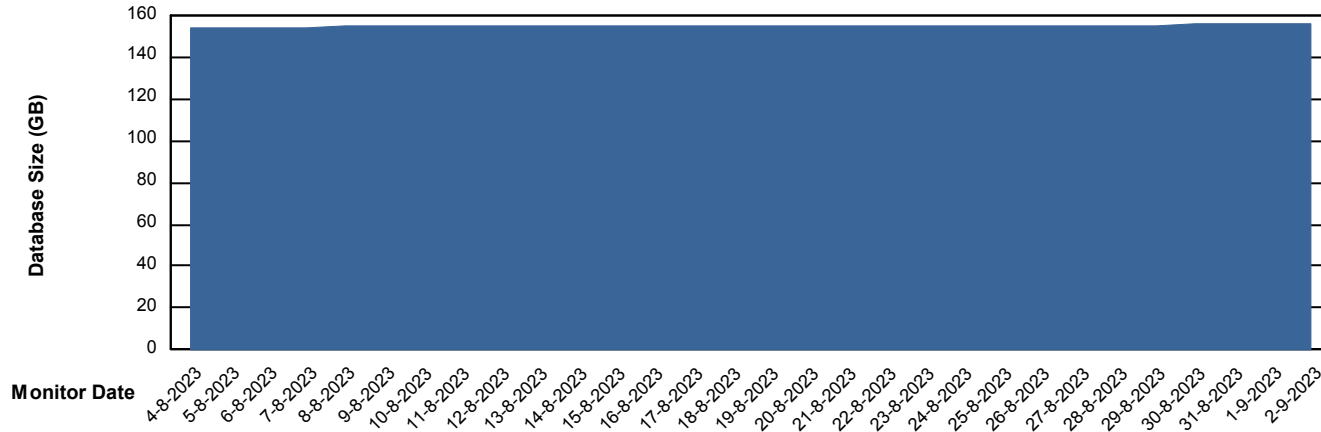
# Weekly SLA Customer Report

Customer AUJ Production  
Database ID 41



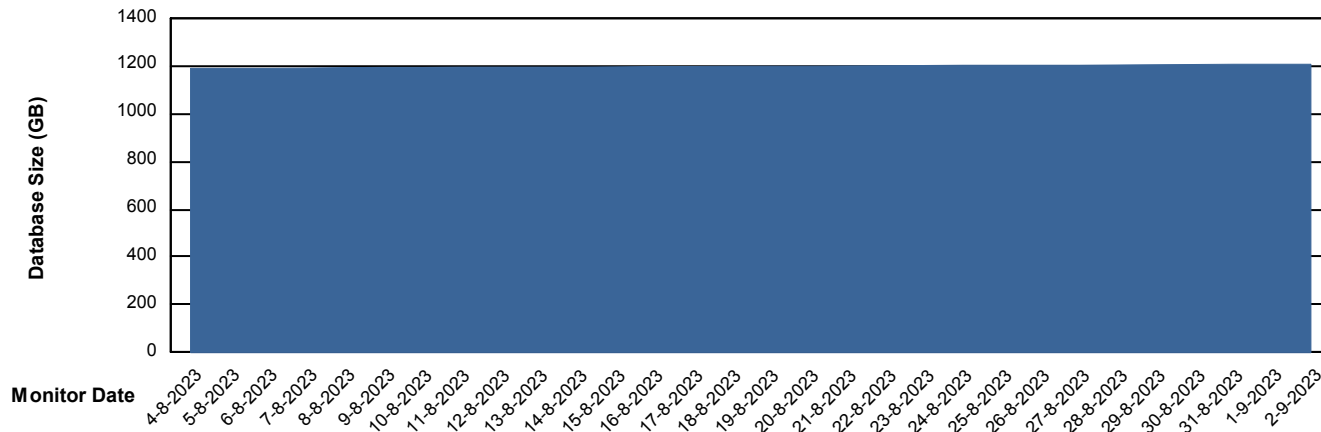
DATABASE SIZE AUJ Prod. BI DB (PABSBI1 server)

### Database growth over last month



DATABASE SIZE AUJ\_DB1\_Primary

### Database growth over last month



# Weekly SLA Customer Report

Customer AUJ Production  
Database ID 41



Database Tablespace AUJ Prod. BI DB (PABSBI1 server)

Date	Tablespace Name	Filesize (Gb)	Usedsize (Gb)	Percentage free
2-9-2023	ABSDATA	156	127	18
	INDX	32	26	20
1-9-2023	ABSDATA	156	127	18
	INDX	32	26	20
31-8-2023	ABSDATA	156	127	18
	INDX	32	26	20
30-8-2023	ABSDATA	156	127	18
	INDX	32	26	20
29-8-2023	ABSDATA	156	127	19
	INDX	32	26	20
28-8-2023	ABSDATA	156	127	19
	INDX	32	26	20
27-8-2023	ABSDATA	156	127	19
	INDX	32	26	20

# Weekly SLA Customer Report

Customer AUJ Production  
 Database ID 41



Database Tablespace AUJ\_DB1\_Primary

Date	Tablespace Name	Filesize (Gb)	Usedsize (Gb)	Percentage free
2-9-2023	ABSDATA	694	572	18
	INDX	747	628	16
1-9-2023	ABSDATA	694	572	18
	INDX	747	628	16
31-8-2023	ABSDATA	694	571	18
	INDX	747	628	16
30-8-2023	ABSDATA	694	571	18
	INDX	747	627	16
29-8-2023	ABSDATA	694	570	18
	INDX	747	627	16
28-8-2023	ABSDATA	694	570	18
	INDX	747	627	16
27-8-2023	ABSDATA	694	569	18
	INDX	747	626	16

BI Status and last ETL error for AUJ Prod. BI DB (PABSBI1 server)

	ma 28/8/2023	di 29/8/2023	wo 30/8/2023	do 31/8/2023	vr 1/9/2023	za 2/9/2023
<b>ABS DataWarehouse ETL Health</b>	OK	OK	OK	OK	OK	OK
<b>ABS DWHStaging ETL Health</b>	OK	OK	OK	OK	OK	OK

# Weekly SLA Customer Report

Customer AUJ Production  
Database ID 41



BI last ETL error for	AUJ Prod. BI DB (PABSBI1 server)
wo, 30-08-2023	None
vr, 1-09-2023	None
za, 2-09-2023	None
zo, 27-08-2023	None
di, 29-08-2023	None
do, 31-08-2023	None
do, 31-08-2023	None
za, 2-09-2023	None
di, 29-08-2023	None
ma, 28-08-2023	None
vr, 1-09-2023	None
wo, 30-08-2023	None
zo, 27-08-2023	None
ma, 28-08-2023	None

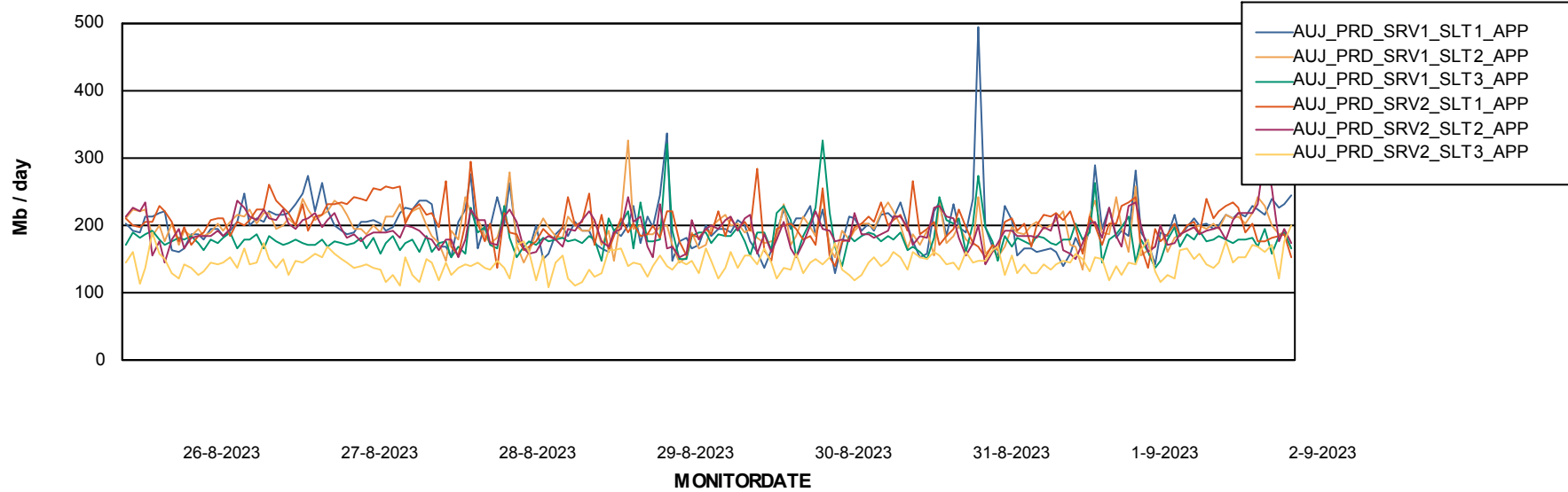
# Weekly SLA Customer Report

Customer AUJ Production  
Database ID 41

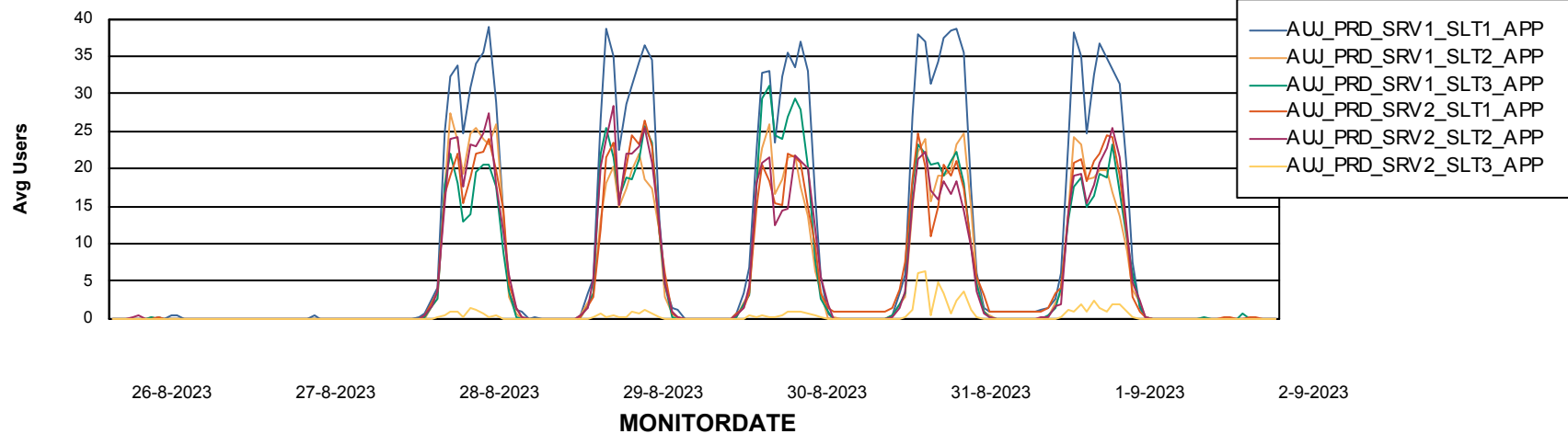


## ABSSolute Application Server Services

### Avg memory used per ABS Server Service



### Avg users per day per ABS server



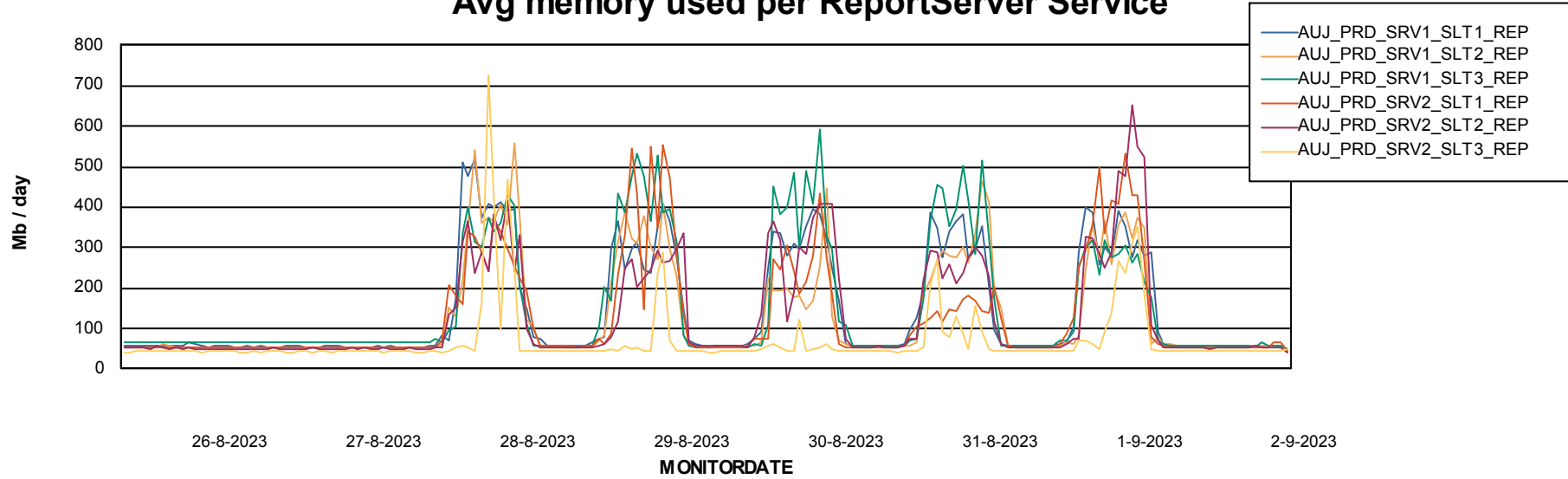
# Weekly SLA Customer Report

Customer AUJ Production  
Database ID 41



## ABSSolute Application ReportServer Services

### Avg memory used per ReportServer Service



### Disaster per ABS component

