

# Weekly SLA Customer Report

Customer KBR\_Production  
 Database ID 117



Harddisk Usage BI-DBSRV

	Free disk space on C: (%)	Total disk space on C: (Gb)	Used disk space on C: (Gb)	Free disk space on D: (%)	Total disk space on D: (Gb)	Used disk space on D: (Gb)	Free disk space on E: (%)	Total disk space on E: (Gb)	Used disk space on E: (Gb)
7-8-2023	16	100	84	84	500	81	36	310	200
6-8-2023	16	100	84	84	500	81	34	310	204
5-8-2023	16	100	84	84	500	81	35	310	203
4-8-2023	17	100	83	84	500	81	35	310	202
3-8-2023	18	100	82	84	500	81	34	310	203
2-8-2023	18	100	82	84	500	81	35	310	203
1-8-2023	18	100	82	84	500	81	35	310	203

Harddisk Usage KBR\_PRD\_APPSRV1

	Free disk space on C: (%)	Total disk space on C: (Gb)	Used disk space on C: (Gb)
7-8-2023	53	149	70
6-8-2023	53	149	70
5-8-2023	54	149	69
4-8-2023	54	149	69
3-8-2023	54	149	69
2-8-2023	54	149	69
1-8-2023	34	149	99

# Weekly SLA Customer Report

Customer KBR\_Production  
 Database ID 117



Harddisk Usage KBR\_PRD\_APPSRV2

	Free disk space on C: (%)	Total disk space on C: (Gb)	Used disk space on C: (Gb)
7-8-2023	39	99	60
6-8-2023	39	99	61
5-8-2023	39	99	61
4-8-2023	39	99	61
3-8-2023	39	99	61
2-8-2023	39	99	60
1-8-2023	39	99	60

Harddisk Usage KBR\_PRD\_DB-SRV1

	Free disk space on C: (%)	Total disk space on C: (Gb)	Used disk space on C: (Gb)	Free disk space on D: (%)	Total disk space on D: (Gb)	Used disk space on D: (Gb)	Free disk space on E: (%)	Total disk space on E: (Gb)	Used disk space on E: (Gb)
7-8-2023	33	99	67	88	800	99	84	400	62
6-8-2023	33	99	67	88	800	99	84	400	63
5-8-2023	33	99	67	88	800	99	84	400	63
4-8-2023	33	99	67	88	800	99	84	400	63
3-8-2023	33	99	67	88	800	99	84	400	64
2-8-2023	33	99	67	88	800	95	84	400	64
1-8-2023	33	99	67	88	800	94	84	400	64

# Weekly SLA Customer Report

Customer KBR\_Production  
Database ID 117



## Harddisk Usage KBR\_PRD\_DB-SRV2

	Free disk space on C: (%)	Total disk space on C: (Gb)	Used disk space on C: (Gb)	Free disk space on D: (%)	Total disk space on D: (Gb)	Used disk space on D: (Gb)	Free disk space on E: (%)	Total disk space on E: (Gb)	Used disk space on E: (Gb)
7-8-2023	44	99	56	91	800	73	86	400	58
6-8-2023	44	99	56	91	800	73	85	400	58
5-8-2023	44	99	56	91	800	73	85	400	59
4-8-2023	44	99	56	91	800	73	85	400	59
3-8-2023	44	99	56	91	800	73	85	400	60
2-8-2023	44	99	56	91	800	69	85	400	59
1-8-2023	43	99	57	91	800	68	85	400	59

## Harddisk Usage KBR\_PRD\_WEBSRV1

	Free disk space on / (%)	Total disk space on / (Gb)	Used disk space on / (Gb)	Free disk space on /boot (%)	Total disk space on /boot (Gb)	Used disk space on /boot (Gb)
7-8-2023	77	55	13	58	1	0
6-8-2023	77	55	13	58	1	0
5-8-2023	77	55	13	58	1	0
4-8-2023	77	55	13	58	1	0
3-8-2023	77	55	12	58	1	0
2-8-2023	77	55	12	58	1	0
1-8-2023	77	55	12	58	1	0

# Weekly SLA Customer Report

Customer KBR\_Production  
Database ID 117



Harddisk Usage KBR\_PRD\_WEBSRV2

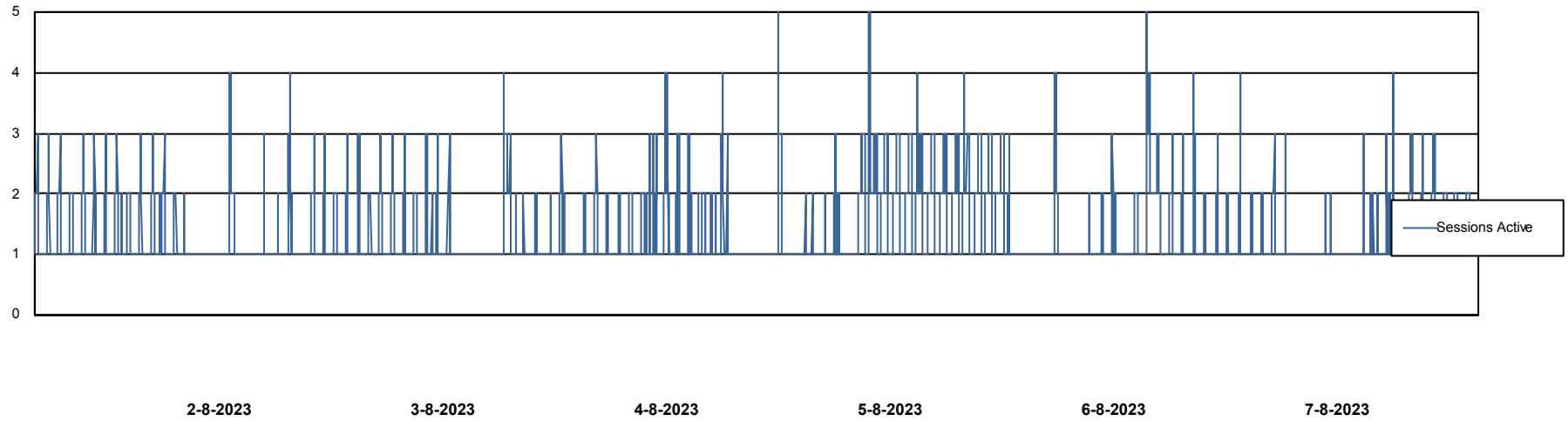
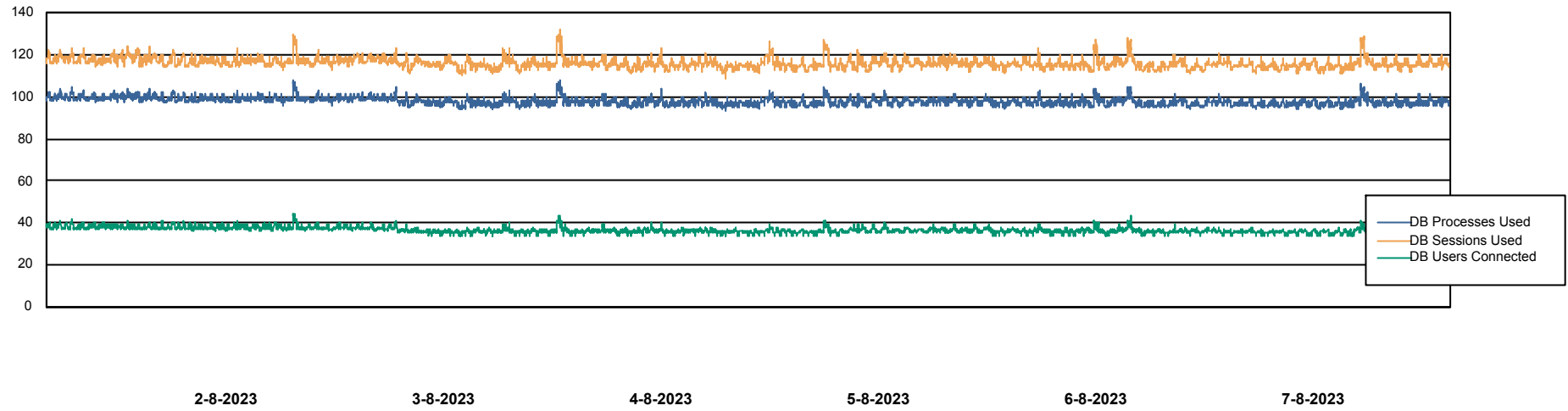
	Free disk space on / (%)	Total disk space on / (Gb)	Used disk space on / (Gb)	Free disk space on /boot (%)	Total disk space on /boot (Gb)	Used disk space on /boot (Gb)
7-8-2023	83	55	10	59	1	0
6-8-2023	83	55	10	59	1	0
5-8-2023	83	55	10	59	1	0
4-8-2023	83	55	10	59	1	0
3-8-2023	83	55	10	59	1	0
2-8-2023	83	55	10	59	1	0
1-8-2023	83	55	10	59	1	0

# Weekly SLA Customer Report

Customer KBR\_Production  
Database ID 117



## Database Performance BI-DBSRV\_DB

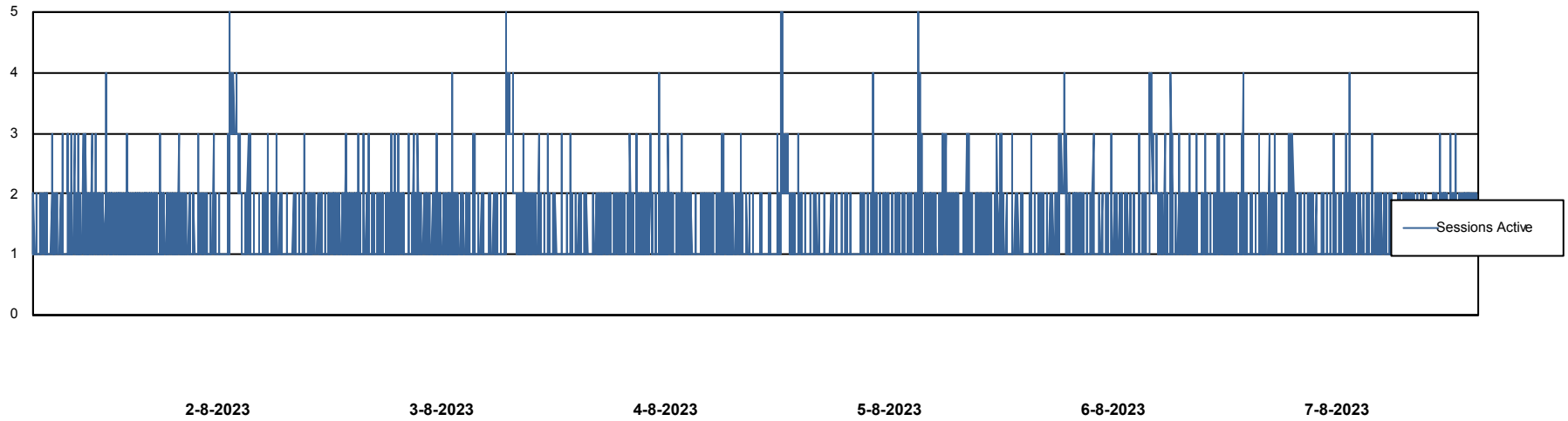
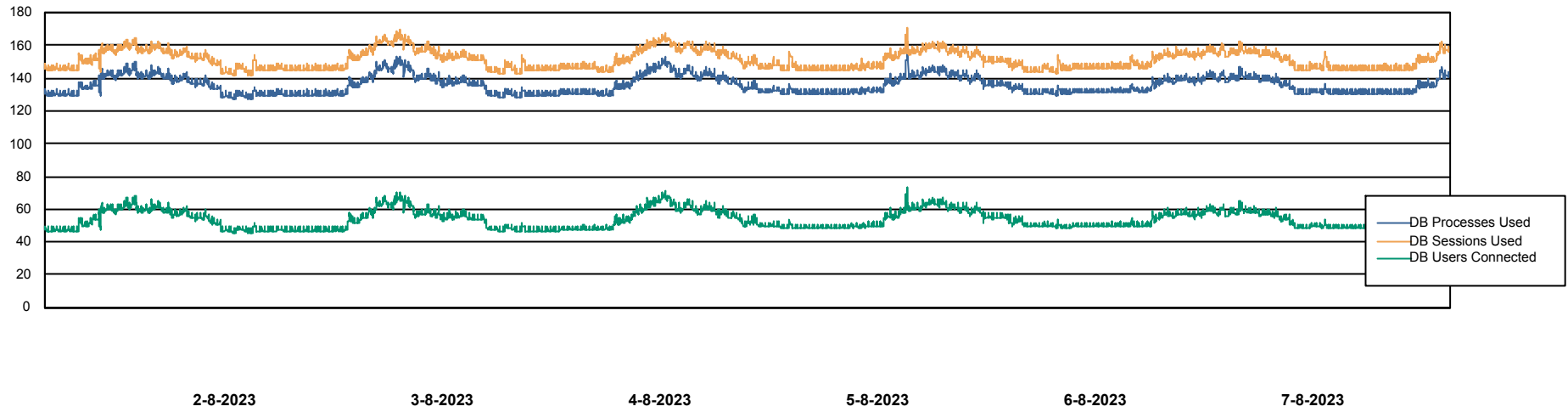


# Weekly SLA Customer Report

Customer KBR\_Production  
Database ID 117



## Database Performance KBR\_PRD\_DB-SRV1\_DB



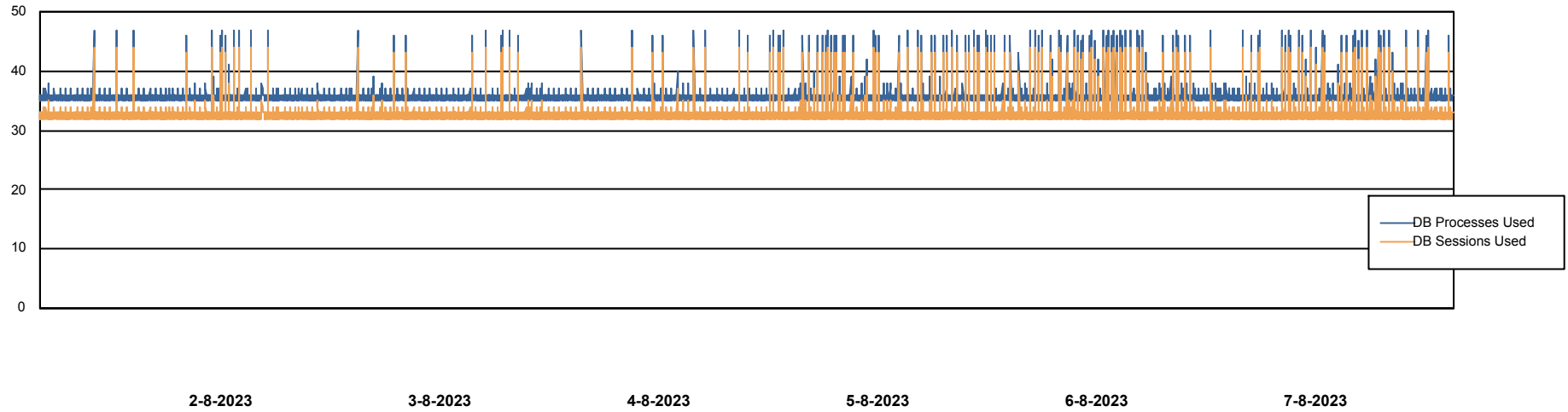
# Weekly SLA Customer Report

Customer KBR\_Production  
Database ID 117



Database Performance KBR\_PRD\_DB-SRV2\_SDB

DB Processes Max 1,000



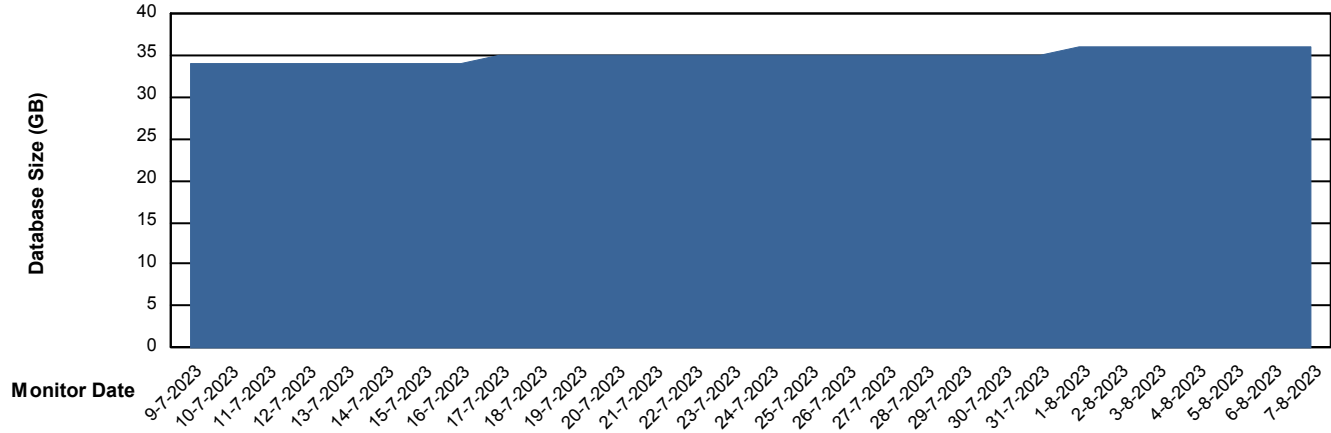
# Weekly SLA Customer Report

Customer KBR\_Production  
Database ID 117



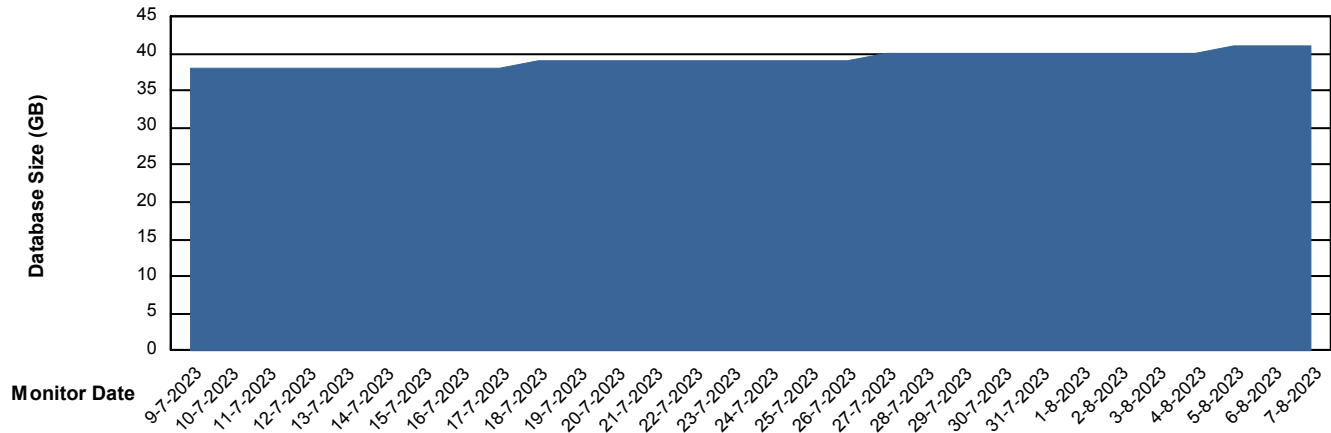
DATABASE SIZE BI-DBSRV\_DB

### Database growth over last month



DATABASE SIZE KBR\_PRD\_DB-SRV1\_DB

### Database growth over last month



# Weekly SLA Customer Report

Customer KBR\_Production  
 Database ID 117



Database Tablespace BI-DBSRV\_DB

Date	Tablespace Name	Filesize (Gb)	Usedsize (Gb)	Percentage free
7-8-2023	ABSDATA	18	15	18
	INDX	21	17	17
6-8-2023	ABSDATA	18	15	18
	INDX	21	17	18
5-8-2023	ABSDATA	18	15	18
	INDX	21	17	18
4-8-2023	ABSDATA	18	15	18
	INDX	21	17	18
3-8-2023	ABSDATA	18	15	18
	INDX	21	17	18
2-8-2023	ABSDATA	18	15	18
	INDX	21	17	18
1-8-2023	ABSDATA	18	15	19
	INDX	21	17	18

# Weekly SLA Customer Report

Customer KBR\_Production  
 Database ID 117



Database Tablespace KBR\_PRD\_DB-SRV1\_DB

Date	Tablespace Name	Filesize (Gb)	Usedsize (Gb)	Percentage free
7-8-2023	ABSDATA	40	30	25
	INDX	8	4	54
6-8-2023	ABSDATA	40	30	25
	INDX	8	4	55
5-8-2023	ABSDATA	40	30	25
	INDX	8	4	55
4-8-2023	ABSDATA	40	30	26
	INDX	8	4	55
3-8-2023	ABSDATA	40	30	26
	INDX	8	4	55
2-8-2023	ABSDATA	40	30	26
	INDX	8	4	55
1-8-2023	ABSDATA	35	29	16
	INDX	8	4	55

BI Status and last ETL error for BI-DBSRV\_DB

	wo 2/8/2023	do 3/8/2023	vr 4/8/2023	za 5/8/2023	zo 6/8/2023	ma 7/8/2023
<b>ABS DataWarehouse ETL Health</b>	OK	OK	OK	OK	OK	OK
<b>ABS DWHStaging ETL Health</b>	OK	OK	OK	OK	OK	OK

# Weekly SLA Customer Report

Customer KBR\_Production  
Database ID 117



BI last ETL error for	BI-DBSRV_DB
zo, 6-08-2023	None
ma, 7-08-2023	None
ma, 7-08-2023	None
zo, 6-08-2023	None
wo, 2-08-2023	None
di, 1-08-2023	None
do, 3-08-2023	None
do, 3-08-2023	None
vr, 4-08-2023	None
za, 5-08-2023	None
za, 5-08-2023	None
vr, 4-08-2023	None
di, 1-08-2023	None
wo, 2-08-2023	None

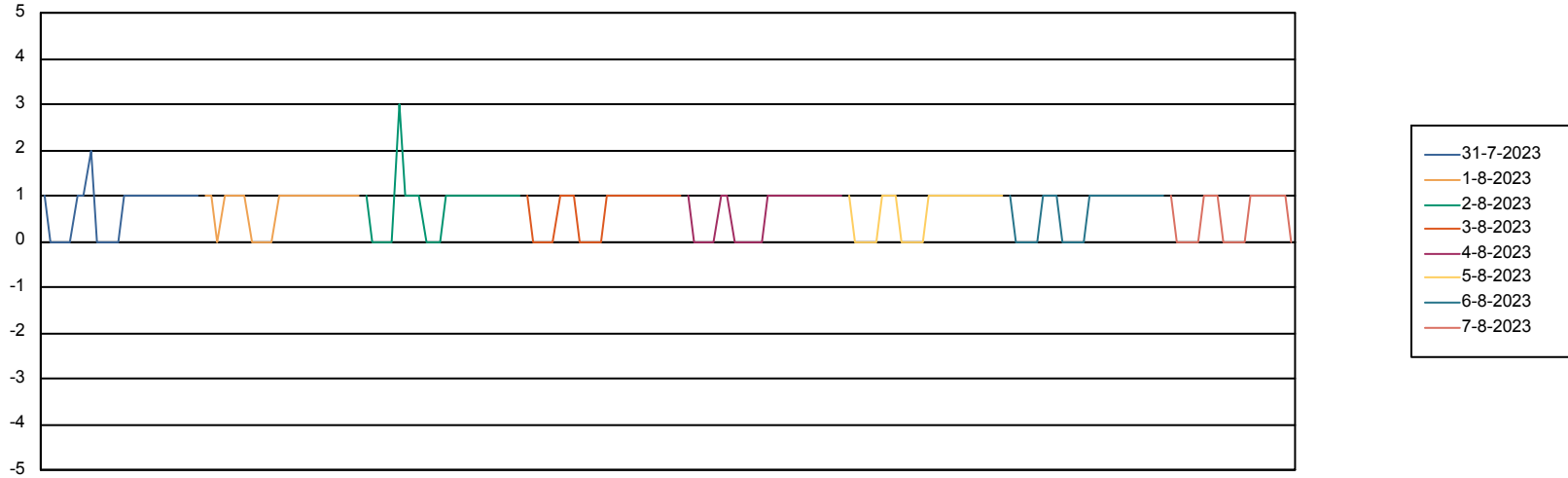
# Weekly SLA Customer Report

Customer KBR\_Production  
Database ID 117



Standby Database Health KBR\_Production

## Recovery lag for last 7 days



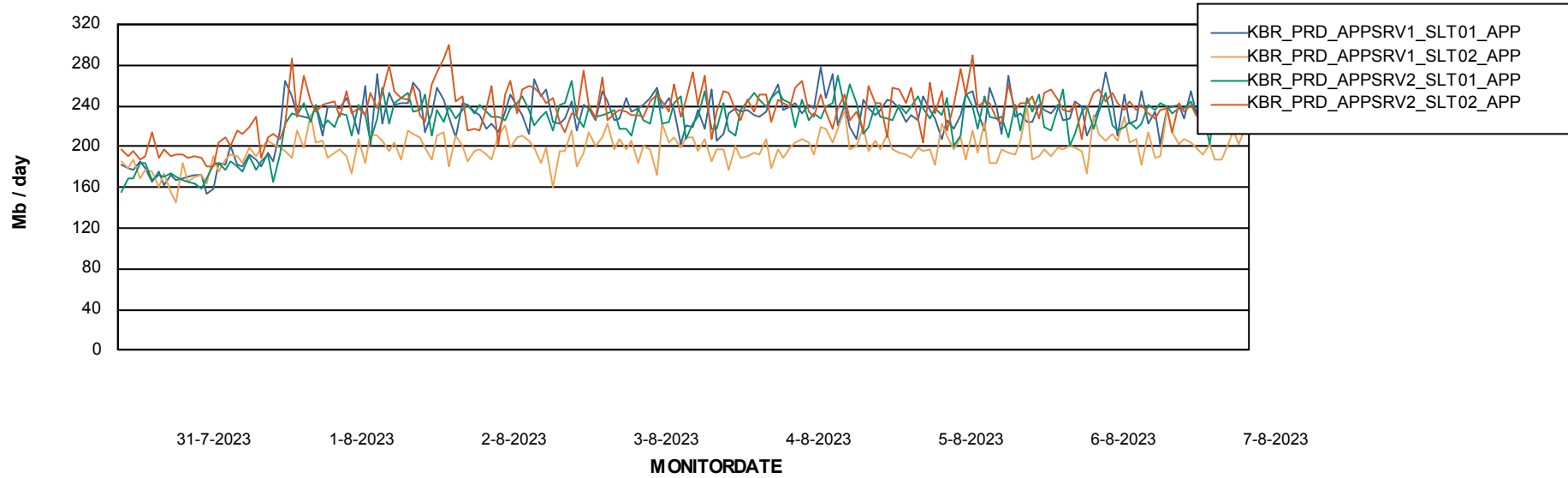
# Weekly SLA Customer Report

Customer KBR\_Production  
Database ID 117



## ABSSolute Application Server Services

### Avg memory used per ABS Server Service



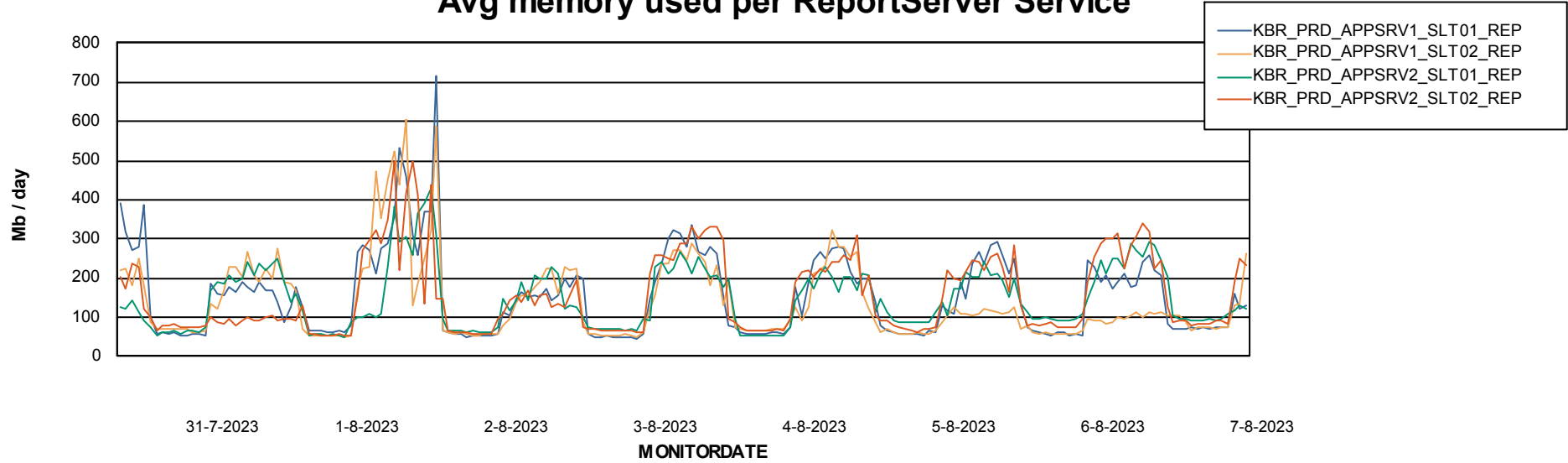
# Weekly SLA Customer Report

Customer KBR\_Production  
Database ID 117

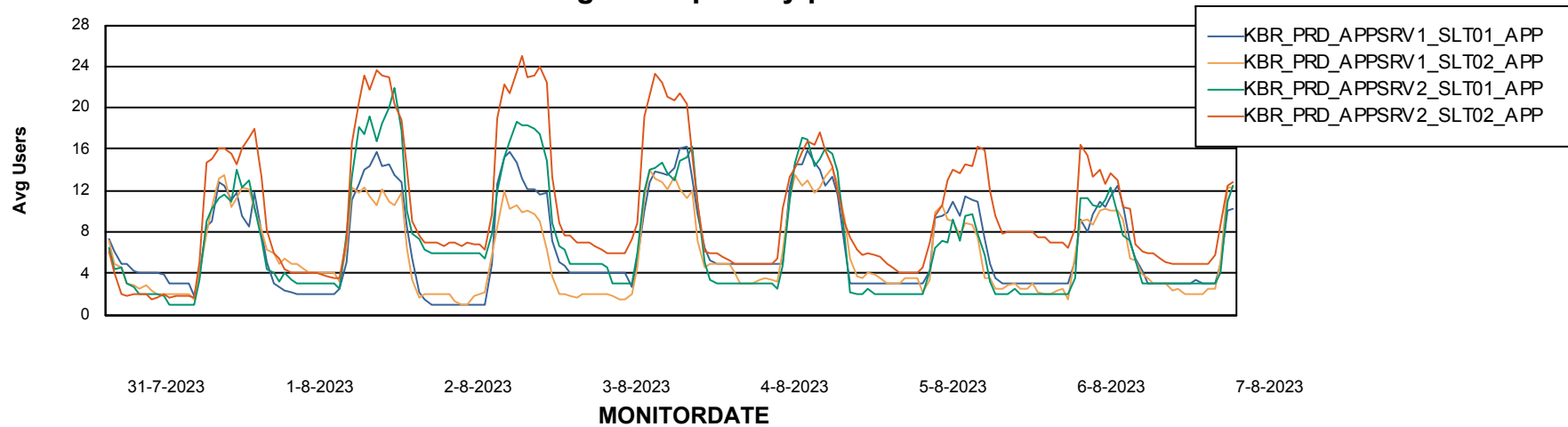


## ABSSolute Application Server Services

### Avg memory used per ReportServer Service



### Avg users per day per ABS server



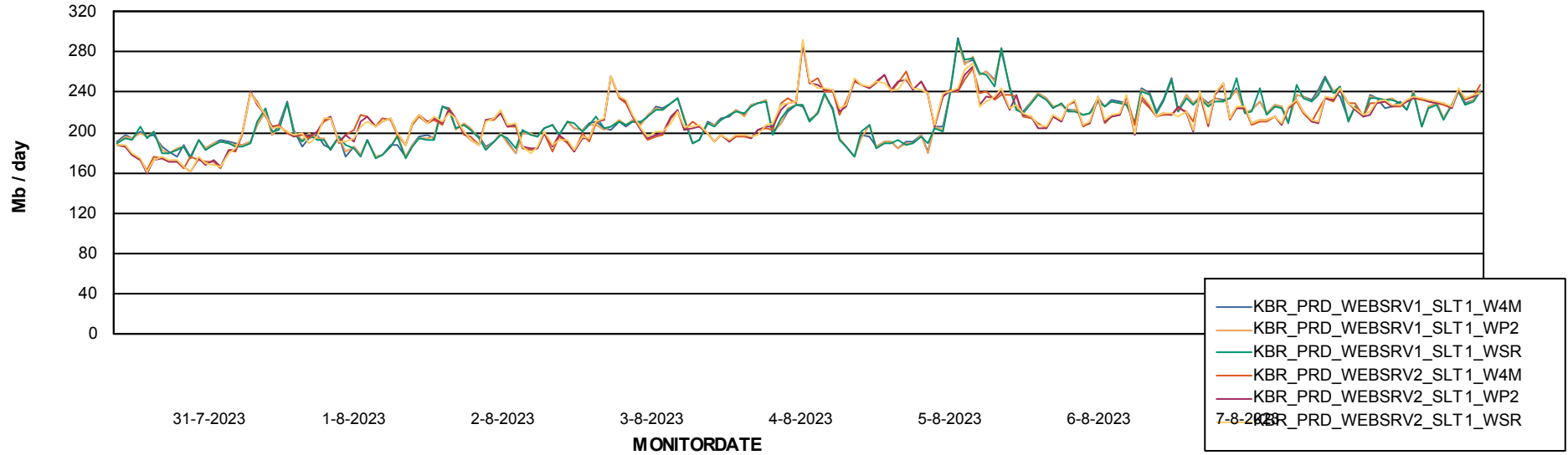
# Weekly SLA Customer Report

Customer KBR\_Production  
Database ID 117



## ABSSolute Web Component Services

### Avg memory used per ABS Web component



# Weekly SLA Customer Report

Customer KBR\_Production  
Database ID 117



### Disaster per ABS component

