

# Weekly SLA Customer Report

Customer NIX\_Production  
 Database ID 51



Harddisk Usage NIX\_PRD\_ABSAPP01

	Free disk space on C: (%)	Total disk space on C: (Gb)	Used disk space on C: (Gb)	Free disk space on E: (%)	Total disk space on E: (Gb)	Used disk space on E: (Gb)
12-8-2023	58	207	86	100	98	0
11-8-2023	58	207	86	100	98	0
10-8-2023	58	207	86	100	98	0
9-8-2023	58	207	86	100	98	0
8-8-2023	58	207	86	100	98	0
7-8-2023	58	207	86	100	98	0
6-8-2023	58	207	86	100	98	0

Harddisk Usage NIX\_PRD\_ABSAPP04

	Free disk space on C: (%)	Total disk space on C: (Gb)	Used disk space on C: (Gb)
12-8-2023	35	127	82
11-8-2023	35	127	82
10-8-2023	35	127	82
9-8-2023	35	127	82
8-8-2023	35	127	82
7-8-2023	35	127	82
6-8-2023	35	127	82

# Weekly SLA Customer Report

Customer NIX\_Production  
Database ID 51



## Harddisk Usage NIX\_PRD\_ABSWEB02

	Free disk space on C: (%)	Total disk space on C: (Gb)	Used disk space on C: (Gb)
12-8-2023	86	300	43
11-8-2023	86	300	43
10-8-2023	86	300	42
9-8-2023	86	300	42
8-8-2023	86	300	42
7-8-2023	86	300	42
6-8-2023	86	300	42

## Harddisk Usage NIX\_PRD\_NIXONABSBI

	Free disk space on C: (%)	Total disk space on C: (Gb)	Used disk space on C: (Gb)	Free disk space on E: (%)	Total disk space on E: (Gb)	Used disk space on E: (Gb)
12-8-2023	68	179	57	37	700	443
11-8-2023	69	179	56	37	700	439
10-8-2023	69	179	56	38	700	432
9-8-2023	69	179	56	39	700	428
8-8-2023	69	179	56	39	700	425
7-8-2023	69	179	56	41	700	410
6-8-2023	69	179	56	46	700	381

# Weekly SLA Customer Report

Customer NIX\_Production  
 Database ID 51



Harddisk Usage NIX\_PRD\_ORCDB1

	Free disk space on C: (%)	Total disk space on C: (Gb)	Used disk space on C: (Gb)	Free disk space on D: (%)	Total disk space on D: (Gb)	Used disk space on D: (Gb)	Free disk space on E: (%)	Total disk space on E: (Gb)	Used disk space on E: (Gb)	Free disk space on F: (%)
12-8-2023	68	554	179	46	586	314	48	605	314	43
11-8-2023	68	554	178	46	586	314	48	605	314	43
10-8-2023	68	554	178	46	586	314	48	605	314	43
9-8-2023	68	554	178	46	586	314	48	605	314	42
8-8-2023	68	554	177	46	586	314	48	605	314	43
7-8-2023	68	554	178	46	586	314	48	605	314	44
6-8-2023	68	554	177	46	586	314	48	605	314	44

Harddisk Usage NIX\_PRD\_ORCDB2

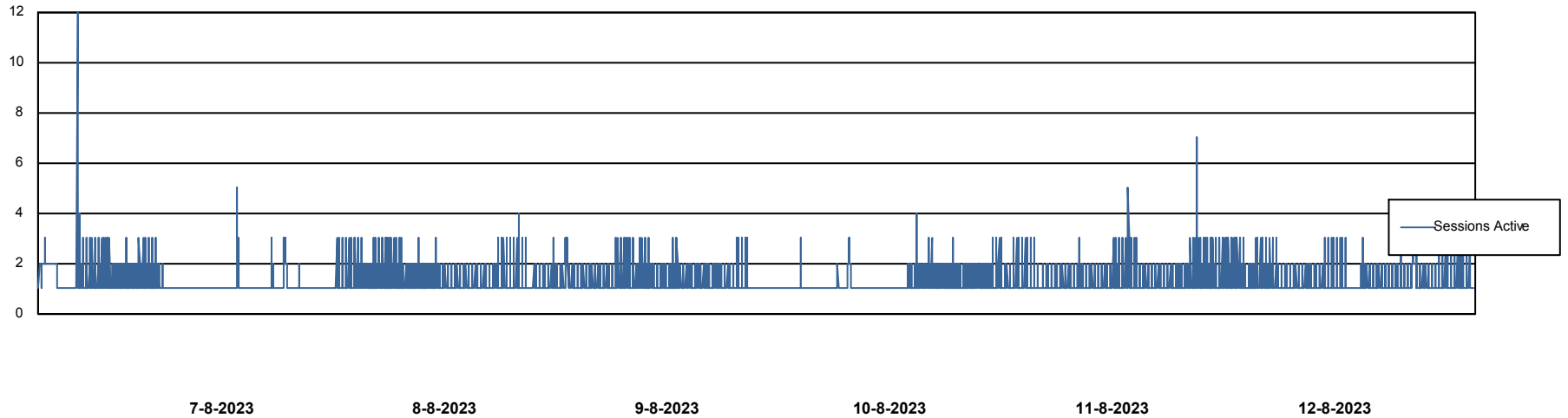
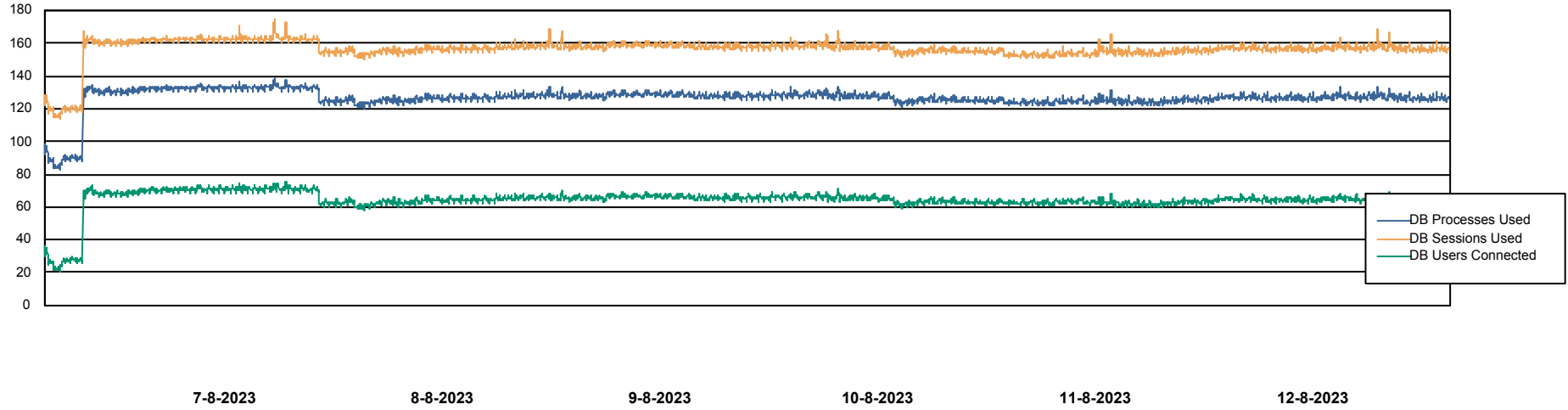
	Free disk space on C: (%)	Total disk space on C: (Gb)	Used disk space on C: (Gb)	Free disk space on D: (%)	Total disk space on D: (Gb)	Used disk space on D: (Gb)	Free disk space on E: (%)	Total disk space on E: (Gb)	Used disk space on E: (Gb)	Free disk space on F: (%)
12-8-2023	88	574	70	42	488	285	54	684	314	87
11-8-2023	88	574	69	42	488	285	54	684	314	87
10-8-2023	88	574	69	42	488	285	54	684	314	87
9-8-2023	88	574	68	42	488	285	54	684	313	87
8-8-2023	88	574	68	42	488	285	54	684	313	87
7-8-2023	88	574	67	42	488	285	54	684	313	88
6-8-2023	88	574	67	42	488	285	54	684	313	88

# Weekly SLA Customer Report

Customer NIX\_Production  
Database ID 51



## Database Performance NIXDB\_BI

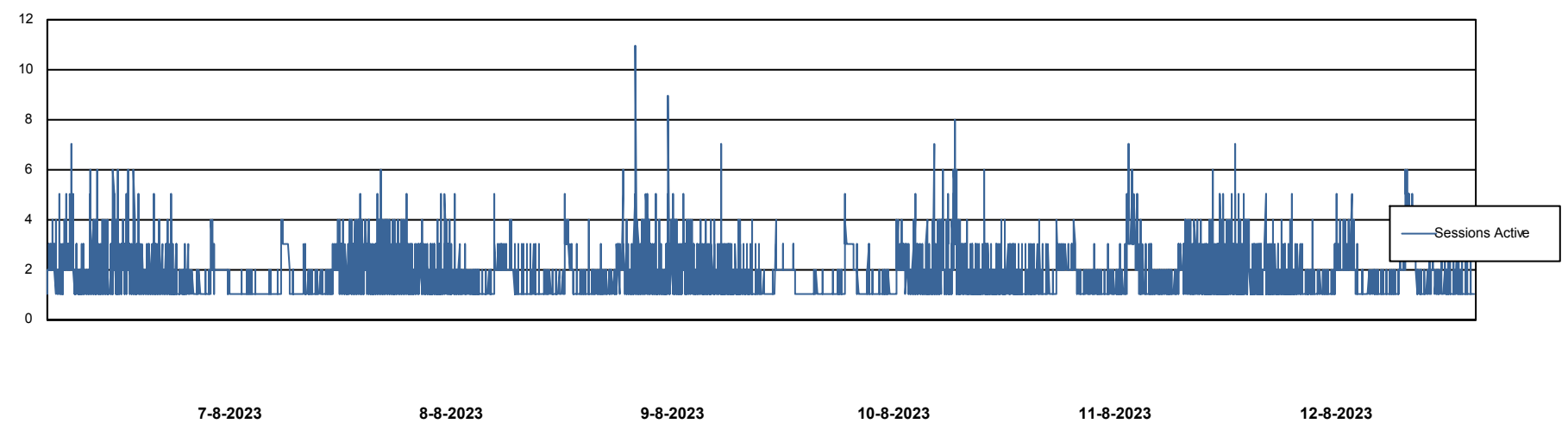
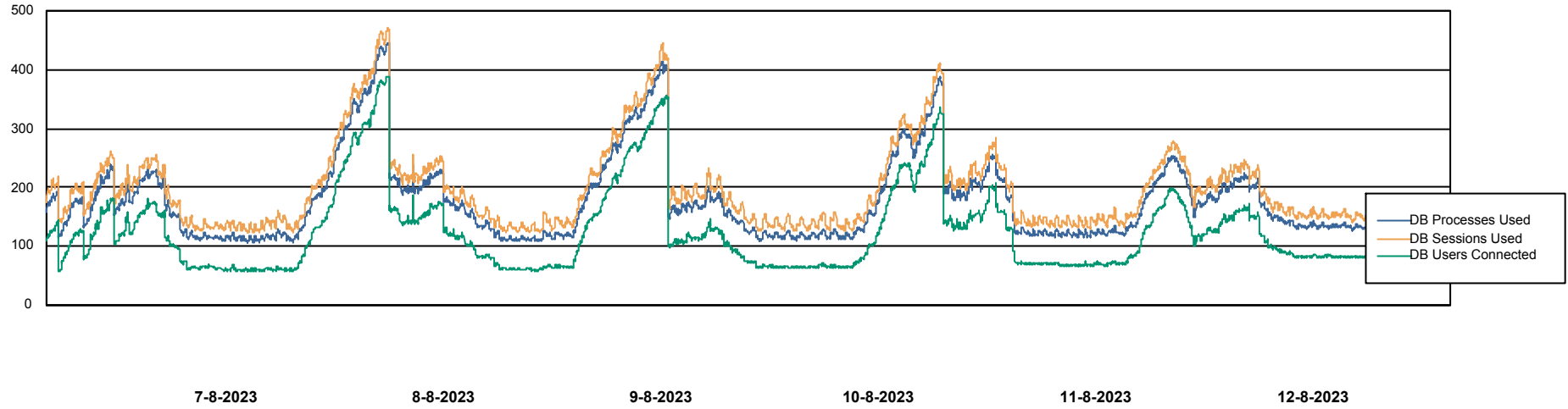


# Weekly SLA Customer Report

Customer NIX\_Production  
Database ID 51



## Database Performance NIXDB\_Production



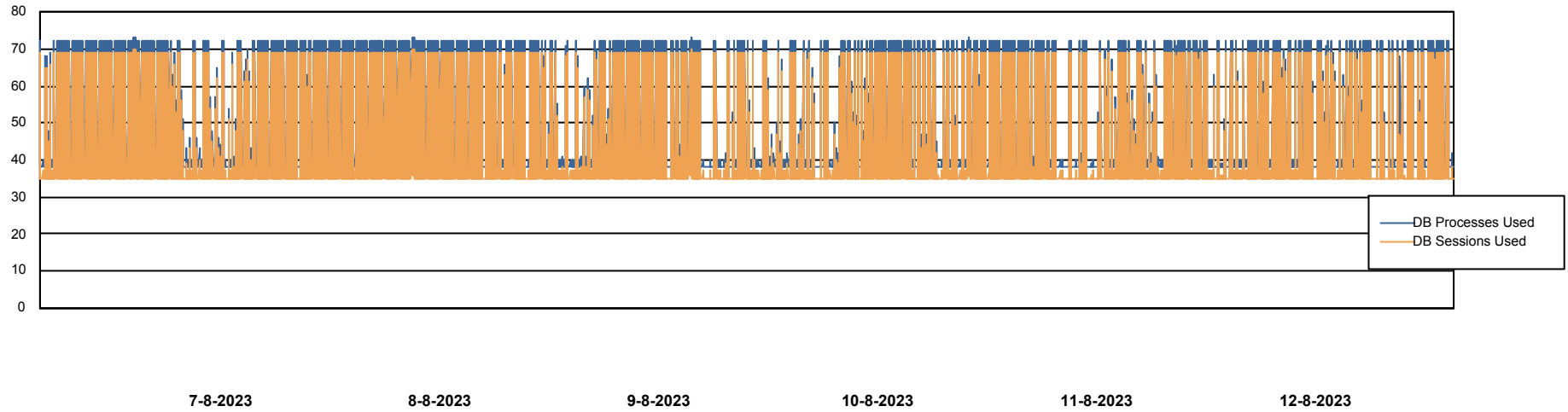
# Weekly SLA Customer Report

Customer NIX\_Production  
Database ID 51



Database Performance NIXDB\_Standby

DB Processes Max 300



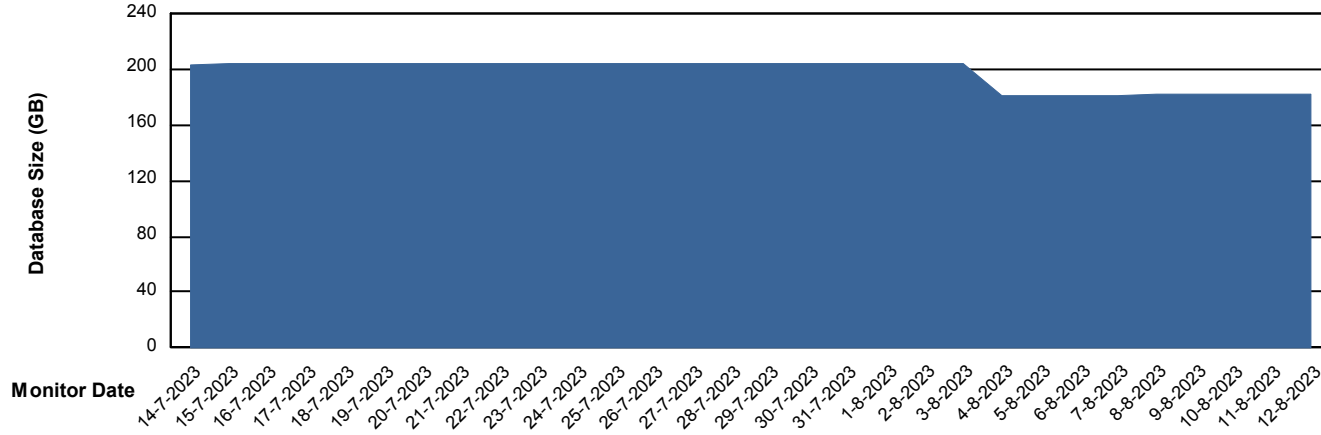
# Weekly SLA Customer Report

Customer NIX\_Production  
Database ID 51



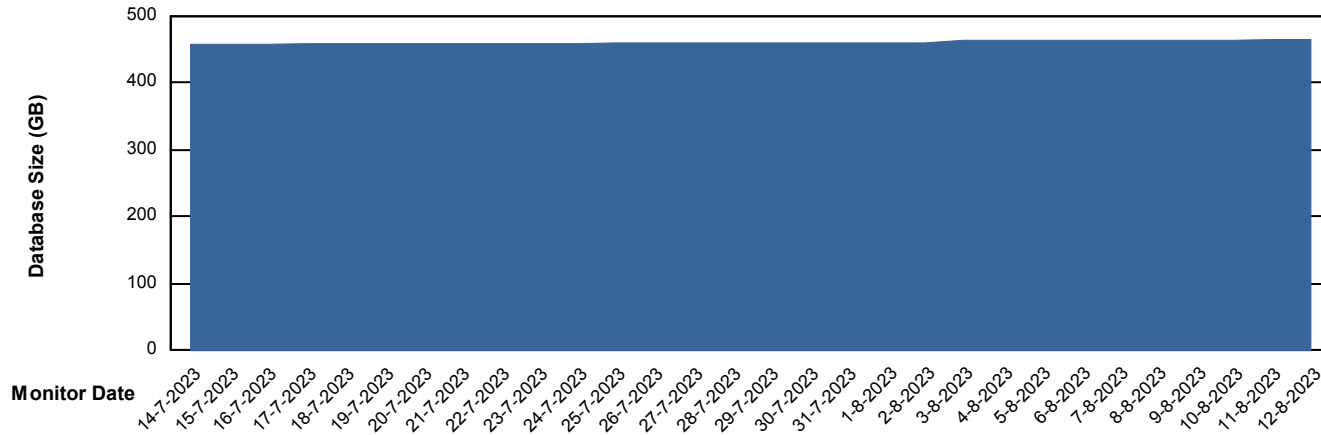
DATABASE SIZE NIXDB\_BI

### Database growth over last month



DATABASE SIZE NIXDB\_Production

### Database growth over last month



# Weekly SLA Customer Report

Customer NIX\_Production  
Database ID 51



Database Tablespace NIXDB\_BI

Date	Tablespace Name	Filesize (Gb)	Usedsize (Gb)	Percentage free
12-8-2023	ABSDATA	100	83	17
	INDX	120	98	18
11-8-2023	ABSDATA	100	83	17
	INDX	120	98	18
10-8-2023	ABSDATA	100	83	17
	INDX	120	98	18
9-8-2023	ABSDATA	100	83	17
	INDX	120	98	18
8-8-2023	ABSDATA	100	83	17
	INDX	120	98	18
7-8-2023	ABSDATA	100	83	17
	INDX	120	98	19
6-8-2023	ABSDATA	100	83	17
	INDX	120	98	19

# Weekly SLA Customer Report

Customer NIX\_Production  
 Database ID 51



Database Tablespace NIXDB\_Production

Date	Tablespace Name	Filesize (Gb)	Usedsize (Gb)	Percentage free
12-8-2023	ABSDATA	226	187	17
	INDX	313	253	19
11-8-2023	ABSDATA	226	187	17
	INDX	313	253	19
10-8-2023	ABSDATA	226	187	17
	INDX	313	253	19
9-8-2023	ABSDATA	226	187	17
	INDX	313	253	19
8-8-2023	ABSDATA	226	187	17
	INDX	313	252	19
7-8-2023	ABSDATA	226	187	17
	INDX	313	252	19
6-8-2023	ABSDATA	226	187	17
	INDX	313	252	19

BI Status and last ETL error for NIXDB\_BI

	ma 7/8/2023	di 8/8/2023	wo 9/8/2023	do 10/8/2023	vr 11/8/2023	za 12/8/2023
<b>ABS DataWarehouse ETL Health</b>	OK	OK	OK	OK	OK	OK
<b>ABS DWHStaging ETL Health</b>	OK	OK	OK	OK	OK	OK

# Weekly SLA Customer Report

Customer NIX\_Production  
Database ID 51



BI last ETL error for	NIXDB_BI
do, 10-08-2023	None
vr, 11-08-2023	None
zo, 6-08-2023	None
wo, 9-08-2023	None
do, 10-08-2023	None
za, 12-08-2023	None
ma, 7-08-2023	ORA-30926: unable to get a stable set of rows in the source tables
ma, 7-08-2023	None
di, 8-08-2023	None
zo, 6-08-2023	ORA-30926: unable to get a stable set of rows in the source tables
wo, 9-08-2023	None
di, 8-08-2023	None
ma, 7-08-2023	None
vr, 11-08-2023	None
za, 12-08-2023	None

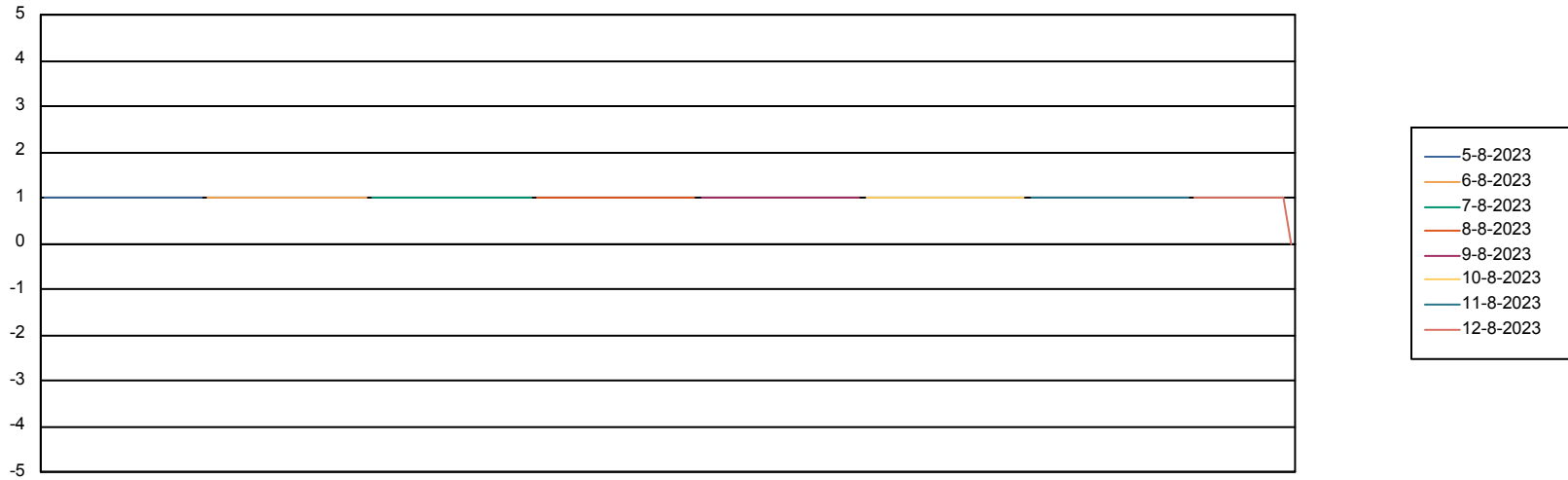
# Weekly SLA Customer Report

Customer NIX\_Production  
Database ID 51



Standby Database Health NIX\_Production

## Recovery lag for last 7 days



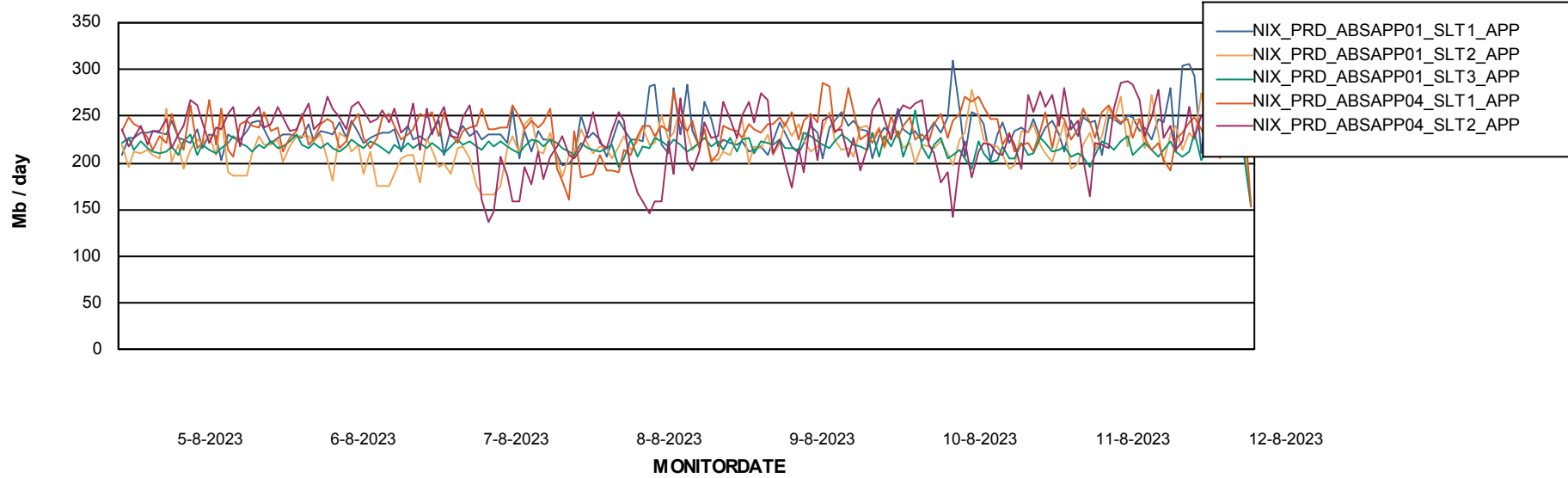
# Weekly SLA Customer Report

Customer NIX\_Production  
Database ID 51

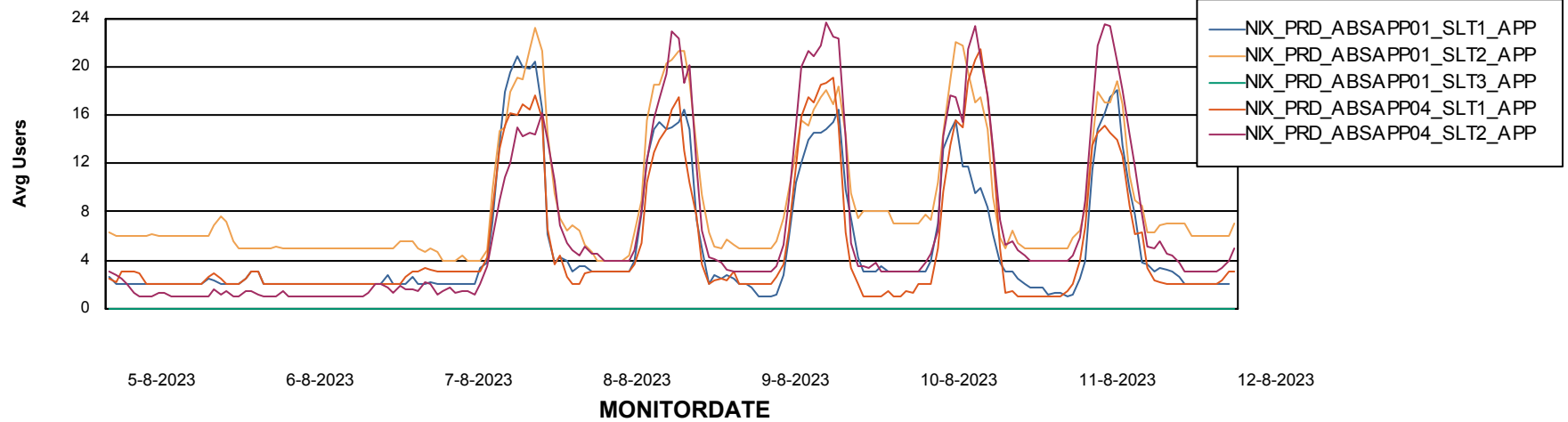


## ABSSolute Application Server Services

### Avg memory used per ABS Server Service



### Avg users per day per ABS server



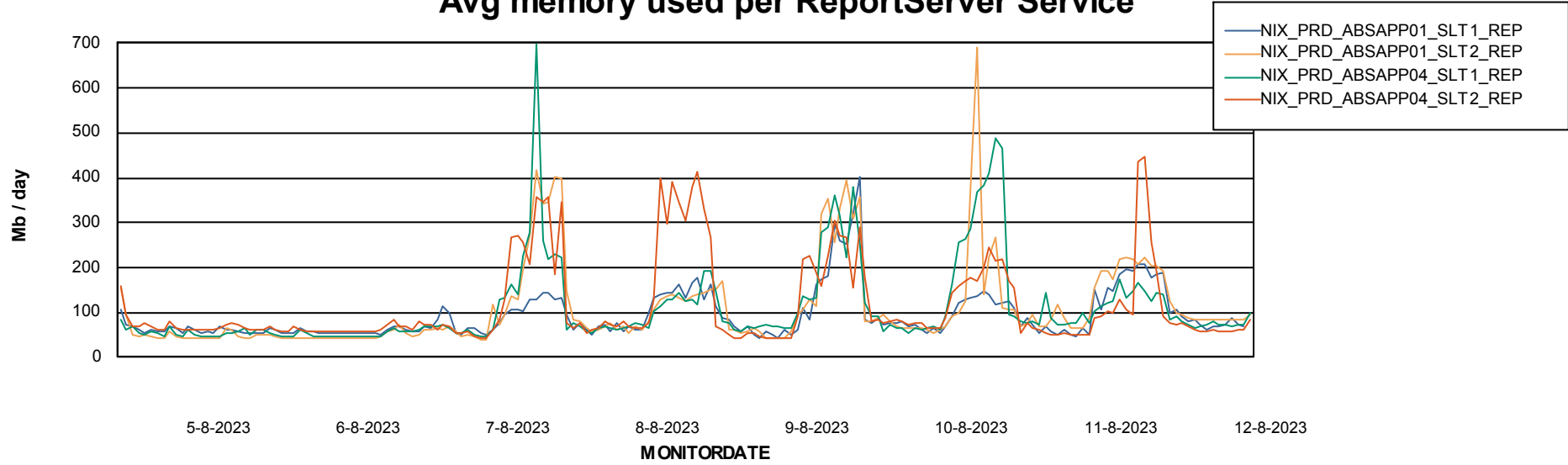
# Weekly SLA Customer Report

Customer NIX\_Production  
Database ID 51



## ABSSolute Application ReportServer Services

### Avg memory used per ReportServer Service



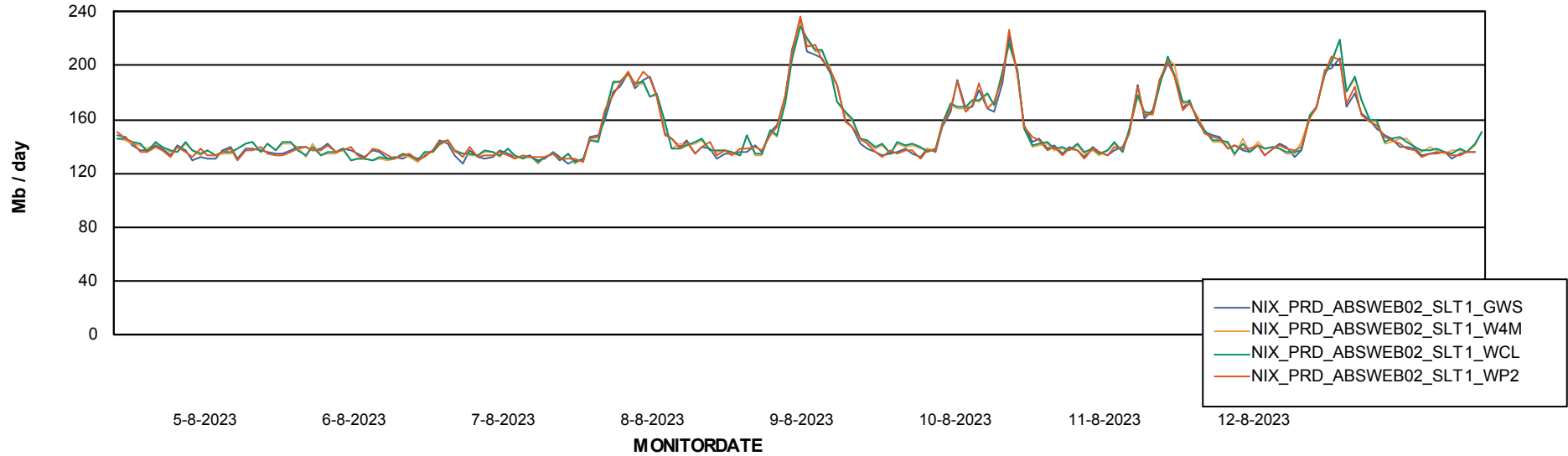
# Weekly SLA Customer Report

Customer NIX\_Production  
Database ID 51



## ABSSolute Web Component Services

### Avg memory used per ABS Web component



# Weekly SLA Customer Report

Customer NIX\_Production  
Database ID 51



### Disaster per ABS component

