

# Weekly SLA Customer Report

Customer KLH\_Production (24/7)  
Database ID 139



## Harddisk Usage KLH\_PRD\_SRSAPP01

	Free disk space on / (%)	Total disk space on / (Gb)	Used disk space on / (Gb)	Free disk space on /abs (%)	Total disk space on /abs (Gb)	Used disk space on /abs (Gb)
12-8-2023	77	50	11	66	50	17
11-8-2023	77	50	11	66	50	17
10-8-2023	77	50	11	66	50	17
9-8-2023	77	50	11	66	50	17
8-8-2023	77	50	11	66	50	17
7-8-2023	77	50	11	66	50	17
6-8-2023	77	50	11	66	50	17

## Harddisk Usage KLH\_PRD\_SRSAPP02

	Free disk space on / (%)	Total disk space on / (Gb)	Used disk space on / (Gb)	Free disk space on /abs (%)	Total disk space on /abs (Gb)	Used disk space on /abs (Gb)
12-8-2023	78	50	11	43	50	28
11-8-2023	78	50	11	42	50	29
10-8-2023	78	50	11	43	50	29
9-8-2023	78	50	11	43	50	29
8-8-2023	78	50	11	43	50	29
7-8-2023	78	50	11	43	50	28
6-8-2023	78	50	11	43	50	28

# Weekly SLA Customer Report

Customer KLH\_Production (24/7)  
Database ID 139



## Harddisk Usage KLH\_PRD\_SRSBI01

	Free disk space on / (%)	Total disk space on / (Gb)	Used disk space on / (Gb)	Free disk space on /abs/dumpf	Total disk space on /abs/dumpf	Used disk space on /abs/dumpf	Free disk space on /u01 (%)	Total disk space on /u01 (Gb)	Used disk space on /u01 (Gb)
12-8-2023	42	50	29	36	500	318	63	50	19
11-8-2023	42	50	29	38	500	310	63	50	19
10-8-2023	42	50	29	37	500	313	63	50	19
9-8-2023	42	50	29	36	500	319	63	50	19
8-8-2023	42	50	29	34	500	329	63	50	19
7-8-2023	42	50	29	31	500	347	63	50	19
6-8-2023	42	50	29	31	500	345	63	50	19

## Harddisk Usage KLH\_PRD\_SRSBIDB01

	Free disk space on / (%)	Total disk space on / (Gb)	Used disk space on / (Gb)	Free disk space on /abs/dumpf	Total disk space on /abs/dumpf	Used disk space on /abs/dumpf	Free disk space on /u01 (%)	Total disk space on /u01 (Gb)	Used disk space on /u01 (Gb)
12-8-2023	74	100	26	36	500	318	55	400	180
11-8-2023	74	100	26	38	500	310	55	400	181
10-8-2023	74	100	26	37	500	313	55	400	181
9-8-2023	74	100	26	36	500	319	55	400	182
8-8-2023	74	100	26	34	500	329	54	400	183
7-8-2023	74	100	26	31	500	347	54	400	183
6-8-2023	74	100	26	31	500	345	54	400	183

# Weekly SLA Customer Report

Customer KLH\_Production (24/7)  
Database ID 139



## Harddisk Usage KLH\_PRD\_SRSDDB01

	Free disk space on / (%)	Total disk space on / (Gb)	Used disk space on / (Gb)	Free disk space on /abs/dumpf	Total disk space on /abs/dumpf	Used disk space on /abs/dumpf	Free disk space on /u01 (%)	Total disk space on /u01 (Gb)	Used disk space on /u01 (Gb)
12-8-2023	74	100	26	36	500	318	26	400	295
11-8-2023	74	100	26	38	500	310	28	400	289
10-8-2023	74	100	26	37	500	313	27	400	290
9-8-2023	74	100	26	36	500	319	28	400	290
8-8-2023	74	100	26	34	500	329	27	400	292
7-8-2023	74	100	26	31	500	347	25	400	299
6-8-2023	74	100	26	31	500	345	24	400	305

## Harddisk Usage KLH\_PRD\_SRSDDB02

	Free disk space on / (%)	Total disk space on / (Gb)	Used disk space on / (Gb)	Free disk space on /abs/dumpf	Total disk space on /abs/dumpf	Used disk space on /abs/dumpf	Free disk space on /u01 (%)	Total disk space on /u01 (Gb)	Used disk space on /u01 (Gb)
12-8-2023	74	100	26	36	500	318	23	400	308
11-8-2023	74	100	26	38	500	310	23	400	307
10-8-2023	74	100	26	37	500	313	23	400	308
9-8-2023	74	100	26	36	500	319	23	400	309
8-8-2023	74	100	26	34	500	329	21	400	316
7-8-2023	74	100	26	31	500	347	19	400	322
6-8-2023	74	100	26	31	500	345	17	400	332

# Weekly SLA Customer Report

Customer KLH\_Production (24/7)  
Database ID 139



## Harddisk Usage KLH\_PRD\_SRSNFS01

	Free disk space on / (%)	Total disk space on / (Gb)	Used disk space on / (Gb)	Free disk space on /var/nfs/ex	Total disk space on /var/nfs/ex	Used disk space on /var/nfs/ex	Free disk space on /var/nfs/ora	Total disk space on /var/nfs/ora	Used disk space on /var/nfs/ora
12-8-2023	64	30	11	62	50	19	36	500	318
11-8-2023	64	30	11	60	50	20	38	500	310
10-8-2023	64	30	11	61	50	20	37	500	313
9-8-2023	64	30	11	61	50	20	36	500	319
8-8-2023	64	30	11	61	50	20	34	500	329
7-8-2023	64	30	11	61	50	19	31	500	347
6-8-2023	64	30	11	61	50	19	31	500	345

## Harddisk Usage KLH\_PRD\_SRSSUPPORT01\_DISTRIB

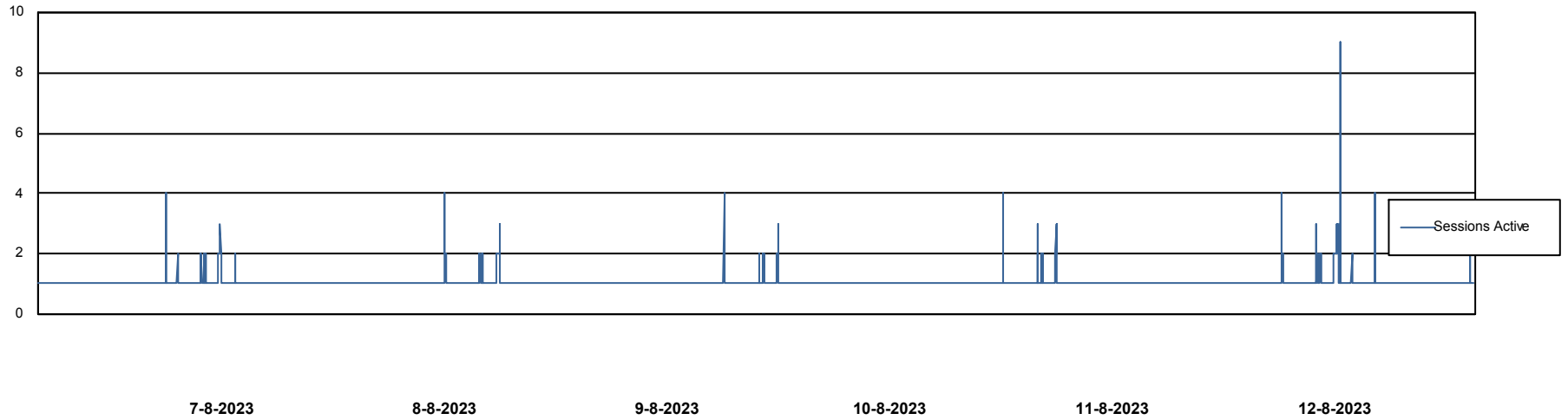
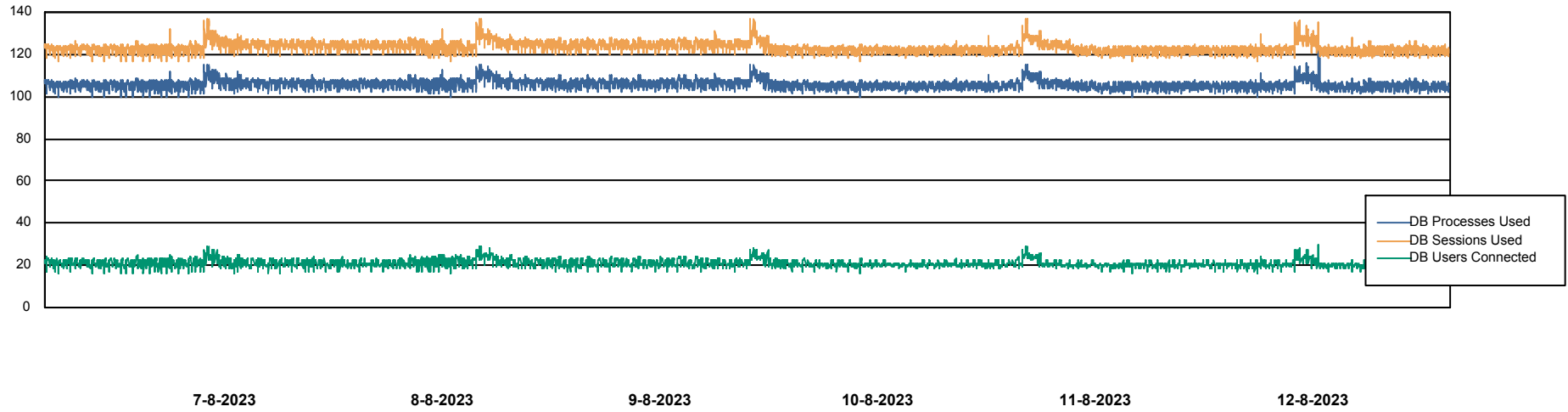
	Free disk space on C: (%)	Total disk space on C: (Gb)	Used disk space on C: (Gb)
12-8-2023	47	100	53
11-8-2023	47	100	53
10-8-2023	47	100	53
9-8-2023	47	100	53
8-8-2023	47	100	53
7-8-2023	48	100	52
6-8-2023	48	100	52

# Weekly SLA Customer Report

Customer KLH\_Production (24/7)  
Database ID 139



## Database Performance KLHDB\_BI

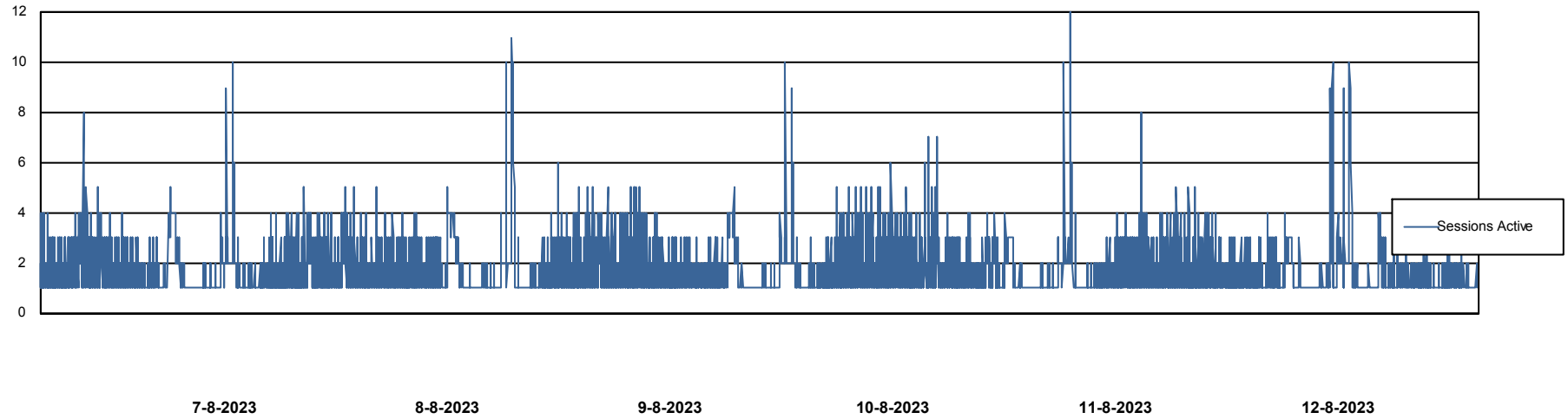
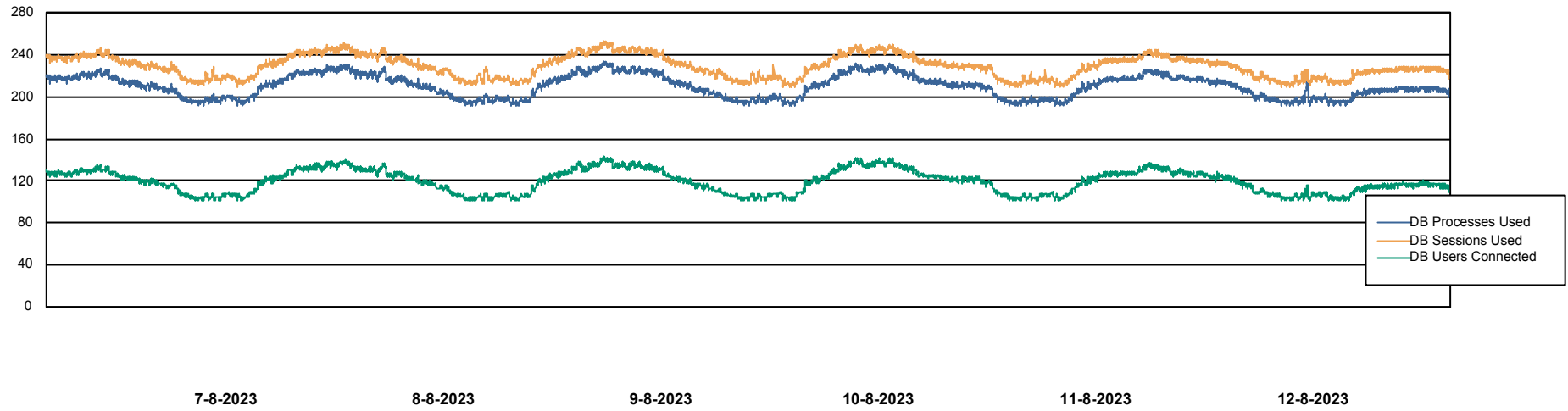


# Weekly SLA Customer Report

Customer KLH\_Production (24/7)  
Database ID 139



## Database Performance KLHDB\_Production



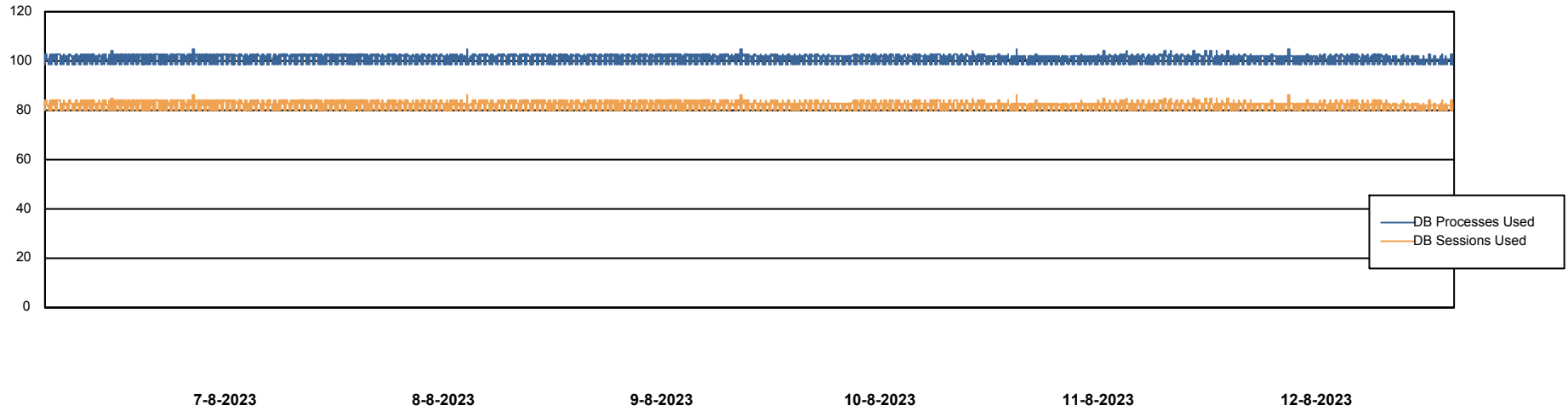
# Weekly SLA Customer Report

Customer KLH\_Production (24/7)  
Database ID 139



## Database Performance KLHDB\_Standby

DB Processes Max 0  
DB Processes Max 1,000  
DB Processes Max 4



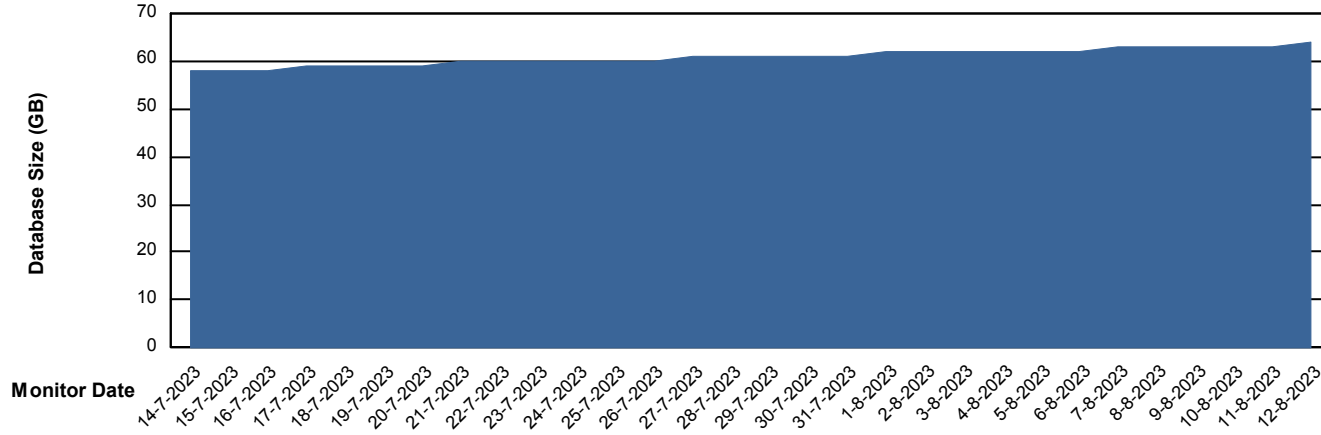
# Weekly SLA Customer Report

Customer KLH\_Production (24/7)  
Database ID 139



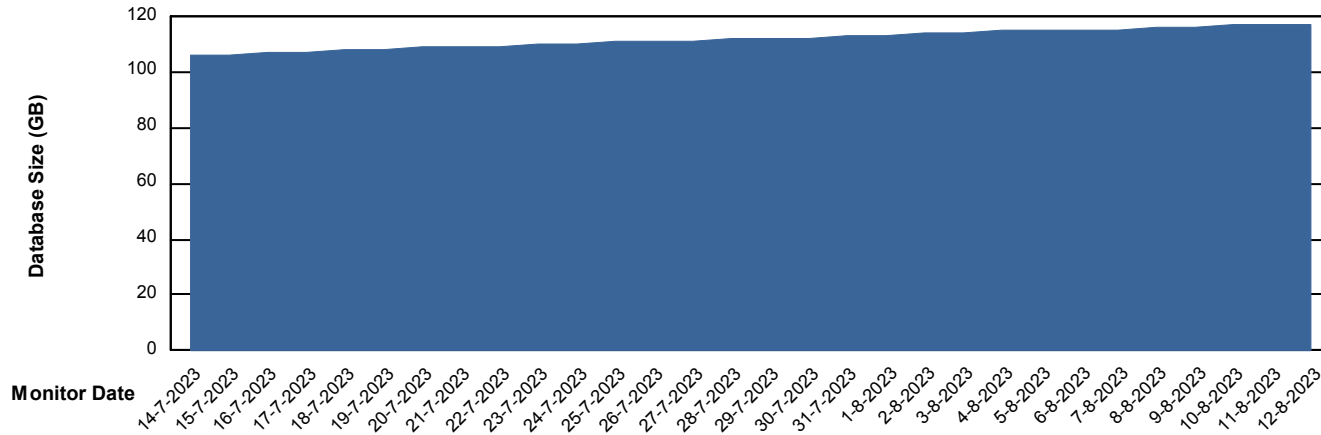
DATABASE SIZE KLHDB\_BI

### Database growth over last month



DATABASE SIZE KLHDB\_Production

### Database growth over last month



# Weekly SLA Customer Report

Customer KLH\_Production (24/7)  
Database ID 139



Database Tablespace KLHDB\_BI

Date	Tablespace Name	Filesize (Gb)	Usedsize (Gb)	Percentage free
12-8-2023	ABSDATA	23	19	17
	INDX	35	30	15
11-8-2023	ABSDATA	23	19	17
	INDX	35	29	16
10-8-2023	ABSDATA	23	19	17
	INDX	35	29	16
9-8-2023	ABSDATA	23	19	18
	INDX	35	29	17
8-8-2023	ABSDATA	23	19	18
	INDX	35	29	17
7-8-2023	ABSDATA	23	19	18
	INDX	35	29	17
6-8-2023	ABSDATA	23	19	19
	INDX	35	29	18

# Weekly SLA Customer Report

Customer KLH\_Production (24/7)  
 Database ID 139



Database Tablespace KLHDB\_Production

Date	Tablespace Name	Filesize (Gb)	Usedsize (Gb)	Percentage free
12-8-2023	ABSDATA	121	102	16
	INDX	8	2	77
11-8-2023	ABSDATA	121	101	16
	INDX	8	2	77
10-8-2023	ABSDATA	121	101	17
	INDX	8	2	77
9-8-2023	ABSDATA	121	101	17
	INDX	8	2	77
8-8-2023	ABSDATA	118	100	15
	INDX	8	2	77
7-8-2023	ABSDATA	118	100	15
	INDX	8	2	77
6-8-2023	ABSDATA	118	99	16
	INDX	8	2	77

BI Status and last ETL error for KLHDB\_BI

	ma 7/8/2023	di 8/8/2023	wo 9/8/2023	do 10/8/2023	vr 11/8/2023	za 12/8/2023
<b>ABS DataWarehouse ETL Health</b>	OK	OK	OK	OK	OK	OK
<b>ABS DWHStaging ETL Health</b>	OK	OK	OK	OK	OK	OK

# Weekly SLA Customer Report

Customer KLH\_Production (24/7)  
Database ID 139



BI last ETL error for	KLHDB_BI
wo, 9-08-2023	None
zo, 6-08-2023	None
vr, 11-08-2023	None
za, 12-08-2023	None
ma, 7-08-2023	None
di, 8-08-2023	None
do, 10-08-2023	None
za, 12-08-2023	None
ma, 7-08-2023	None
di, 8-08-2023	None
do, 10-08-2023	None
vr, 11-08-2023	None
zo, 6-08-2023	None
wo, 9-08-2023	None

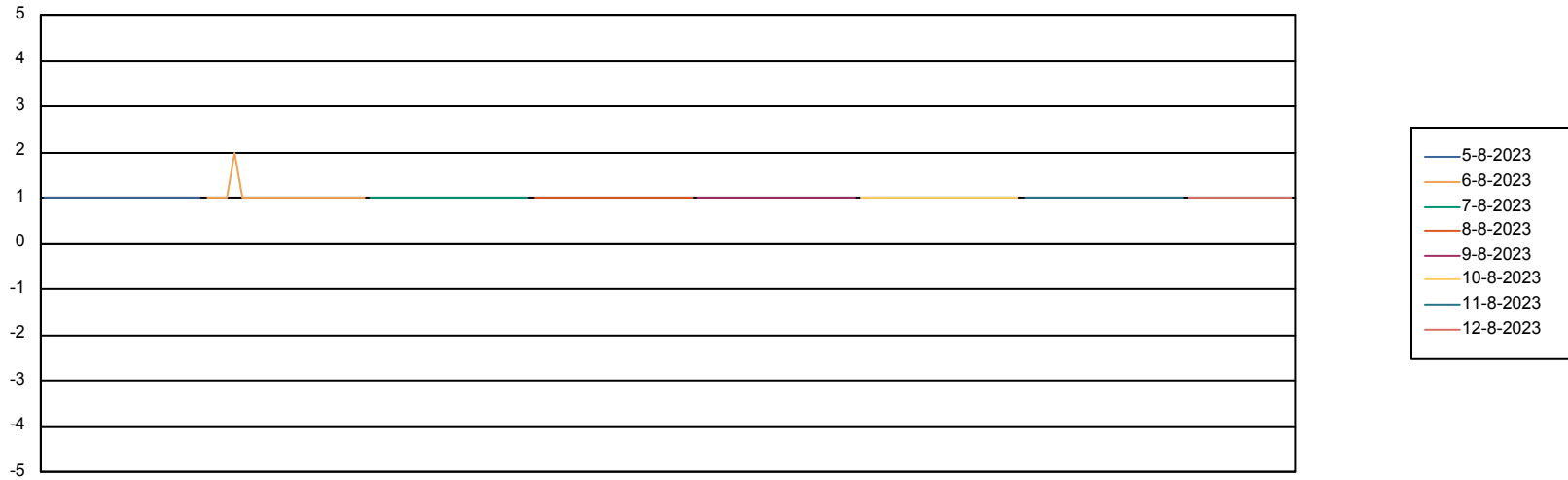
# Weekly SLA Customer Report

Customer KLH\_Production (24/7)  
Database ID 139



Standby Database Health KLH\_Production (24/7)

## Recovery lag for last 7 days



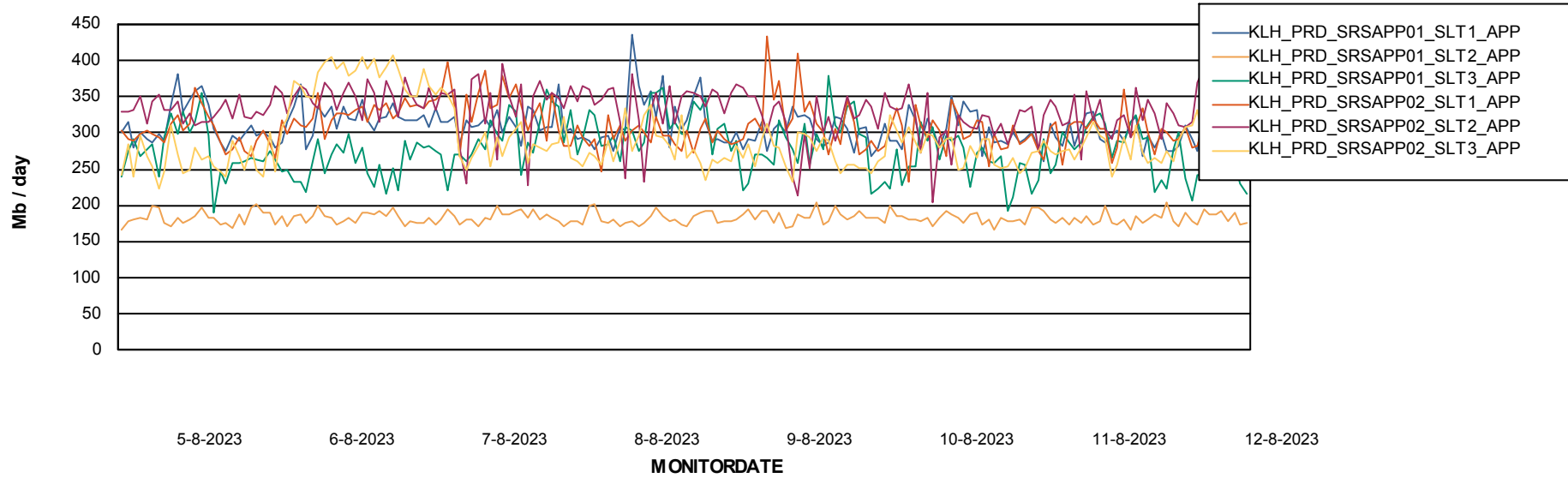
# Weekly SLA Customer Report

Customer KLH\_Production (24/7)  
Database ID 139

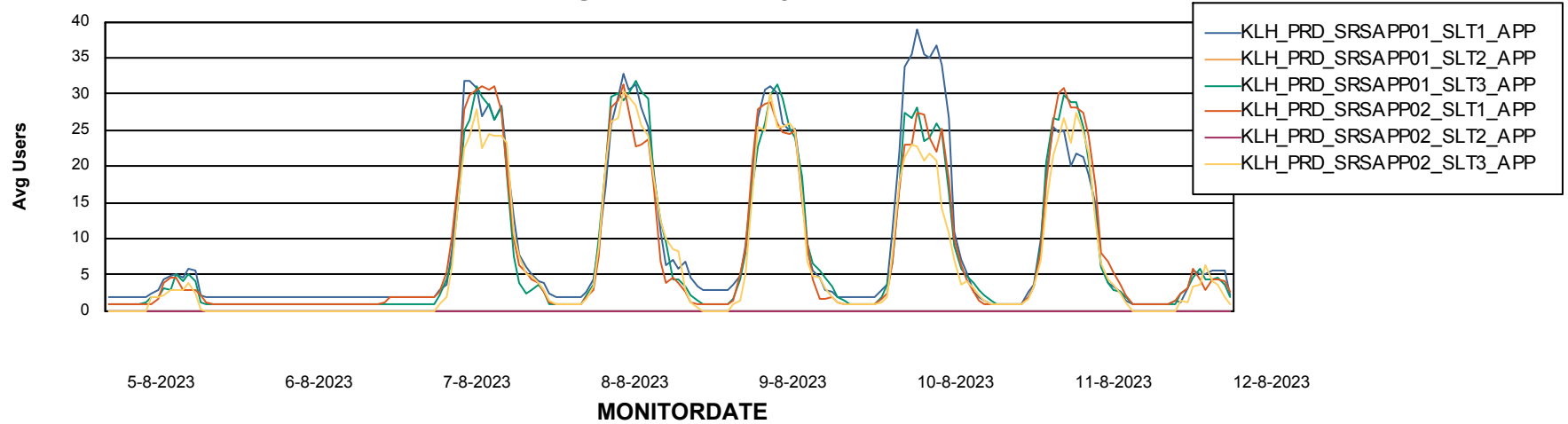


## ABSSolute Application Server Services

### Avg memory used per ABS Server Service



### Avg users per day per ABS server



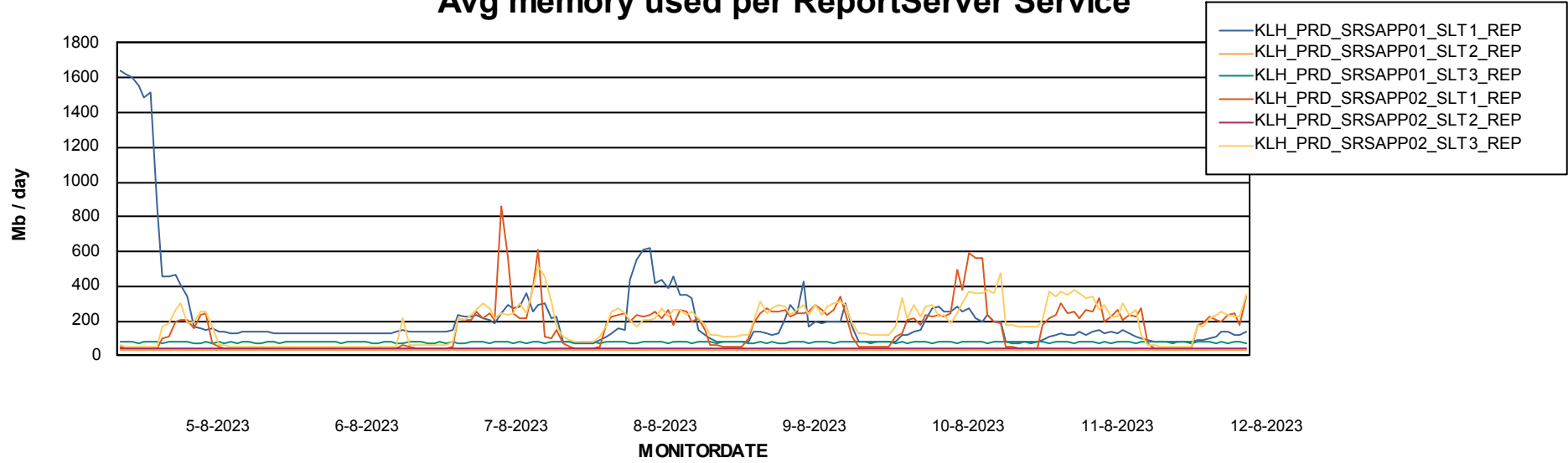
# Weekly SLA Customer Report

Customer KLH\_Production (24/7)  
Database ID 139



## ABSSolute Application ReportServer Services

### Avg memory used per ReportServer Service



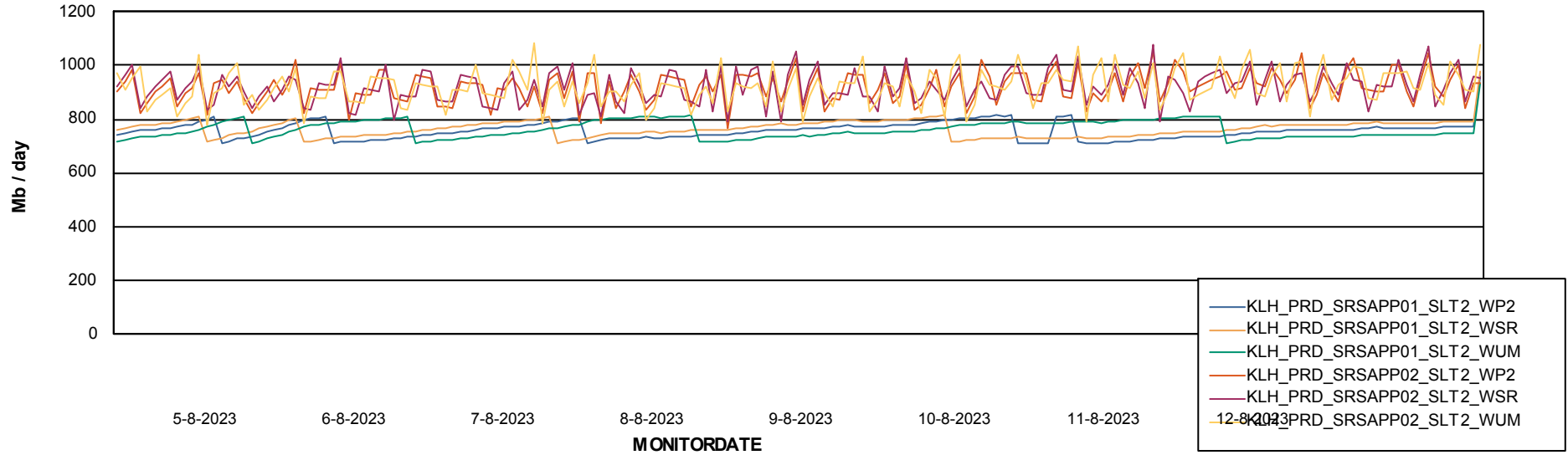
# Weekly SLA Customer Report

Customer KLH\_Production (24/7)  
Database ID 139



## ABSSolute Web Component Services

### Avg memory used per ABS Web component



# Weekly SLA Customer Report

Customer KLH\_Production (24/7)  
Database ID 139



## Disaster per ABS component

