

# Weekly SLA Customer Report

Customer NIX\_Production  
 Database ID 51



Harddisk Usage NIX\_PRD\_ABSAPP01

	Free disk space on C: (%)	Total disk space on C: (Gb)	Used disk space on C: (Gb)	Free disk space on E: (%)	Total disk space on E: (Gb)	Used disk space on E: (Gb)
8-7-2023	61	207	80	100	98	0
7-7-2023	63	207	76	100	98	0
6-7-2023	64	207	75	100	98	0
5-7-2023	64	207	75	100	98	0
4-7-2023	64	207	75	100	98	0
3-7-2023	64	207	75	100	98	0
2-7-2023	64	207	75	100	98	0

Harddisk Usage NIX\_PRD\_ABSAPP04

	Free disk space on C: (%)	Total disk space on C: (Gb)	Used disk space on C: (Gb)
8-7-2023	38	127	79
7-7-2023	36	127	80
6-7-2023	38	127	78
5-7-2023	38	127	78
4-7-2023	39	127	77
3-7-2023	39	127	77
2-7-2023	39	127	77

# Weekly SLA Customer Report

Customer NIX\_Production  
 Database ID 51



Harddisk Usage NIX\_PRD\_ABSWEB02

	Free disk space on C: (%)	Total disk space on C: (Gb)	Used disk space on C: (Gb)
8-7-2023	86	300	42
7-7-2023	86	300	42
6-7-2023	86	300	42
5-7-2023	86	300	41
4-7-2023	86	300	41
3-7-2023	86	300	41
2-7-2023	86	300	41

Harddisk Usage NIX\_PRD\_BISRV

	Free disk space on C: (%)	Total disk space on C: (Gb)	Used disk space on C: (Gb)
8-7-2023	46	836	454
7-7-2023	46	836	452
6-7-2023	46	836	452
5-7-2023	46	836	452
4-7-2023	46	836	453
3-7-2023	46	836	452
2-7-2023	46	836	452

# Weekly SLA Customer Report

Customer NIX\_Production  
 Database ID 51



Harddisk Usage NIX\_PRD\_ORCDB1

	Free disk space on C: (%)	Total disk space on C: (Gb)	Used disk space on C: (Gb)	Free disk space on D: (%)	Total disk space on D: (Gb)	Used disk space on D: (Gb)	Free disk space on E: (%)	Total disk space on E: (Gb)	Used disk space on E: (Gb)	Free disk space on F: (%)
8-7-2023	42	554	322	46	586	314	51	605	299	77
7-7-2023	44	554	310	46	586	314	51	605	299	77
6-7-2023	47	554	295	46	586	314	51	605	299	77
5-7-2023	50	554	275	46	586	314	51	605	299	75
4-7-2023	55	554	249	46	586	314	51	605	296	71
3-7-2023	56	554	244	46	586	314	52	605	294	72
2-7-2023	48	554	286	46	586	314	52	605	294	70

Harddisk Usage NIX\_PRD\_ORCDB2

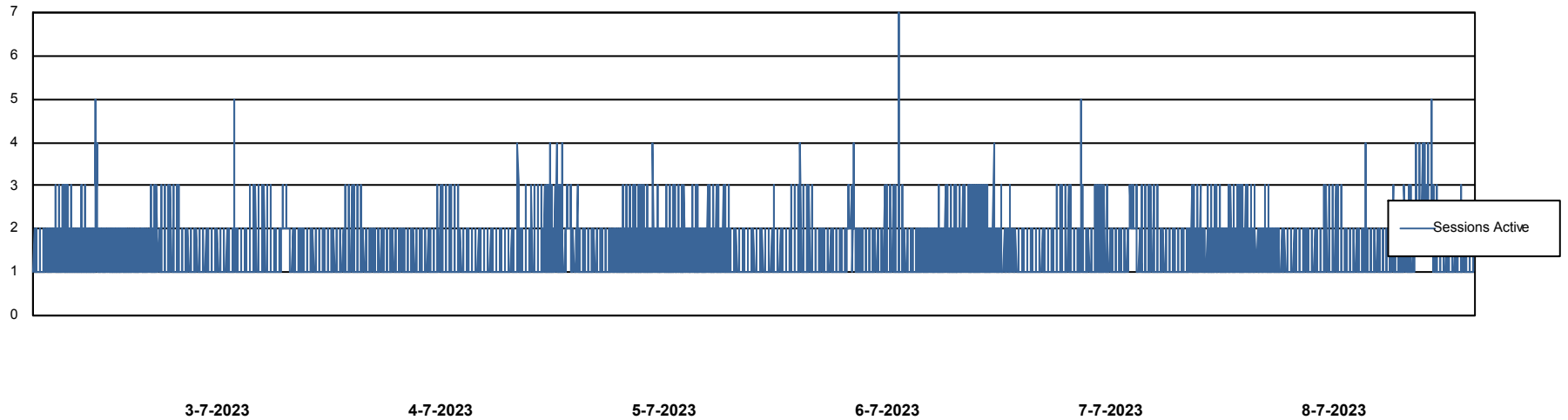
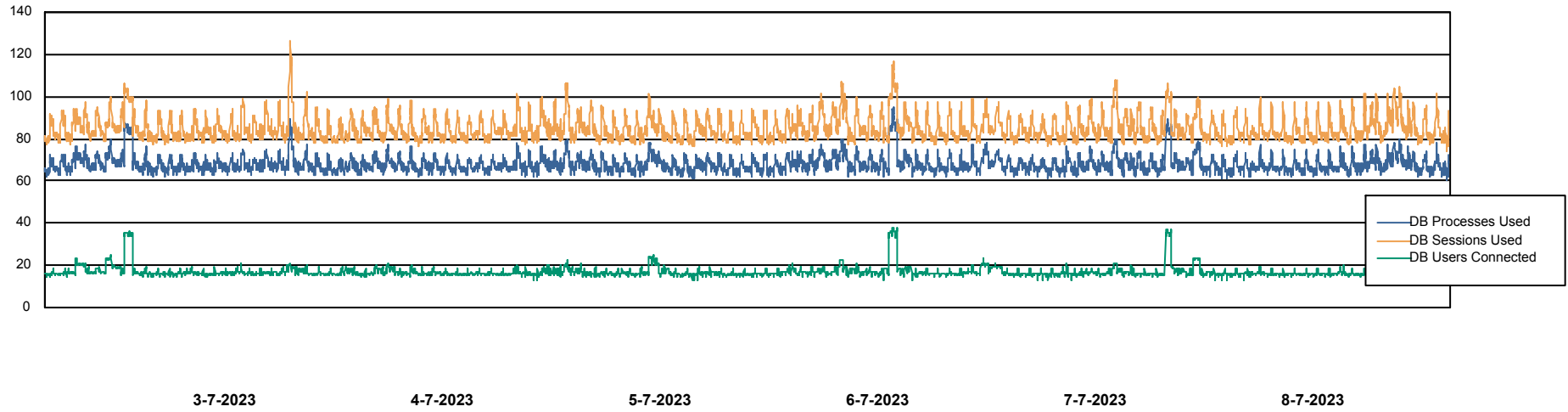
	Free disk space on C: (%)	Total disk space on C: (Gb)	Used disk space on C: (Gb)	Free disk space on D: (%)	Total disk space on D: (Gb)	Used disk space on D: (Gb)	Free disk space on E: (%)	Total disk space on E: (Gb)	Used disk space on E: (Gb)	Free disk space on F: (%)
8-7-2023	88	574	67	42	488	285	56	684	299	88
7-7-2023	88	574	67	42	488	285	56	684	298	88
6-7-2023	88	574	67	42	488	285	56	684	298	88
5-7-2023	88	574	66	42	488	285	56	684	298	88
4-7-2023	88	574	68	42	488	285	57	684	296	88
3-7-2023	88	574	67	42	488	285	57	684	293	88
2-7-2023	88	574	67	42	488	285	57	684	293	88

# Weekly SLA Customer Report

Customer NIX\_Production  
Database ID 51



## Database Performance NIXDB\_BI

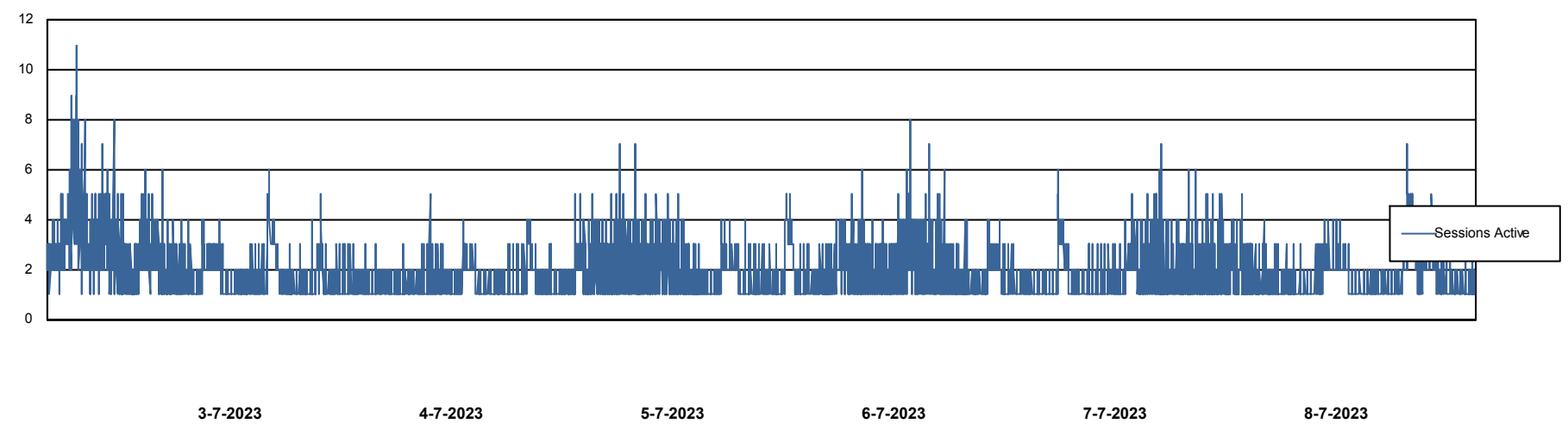
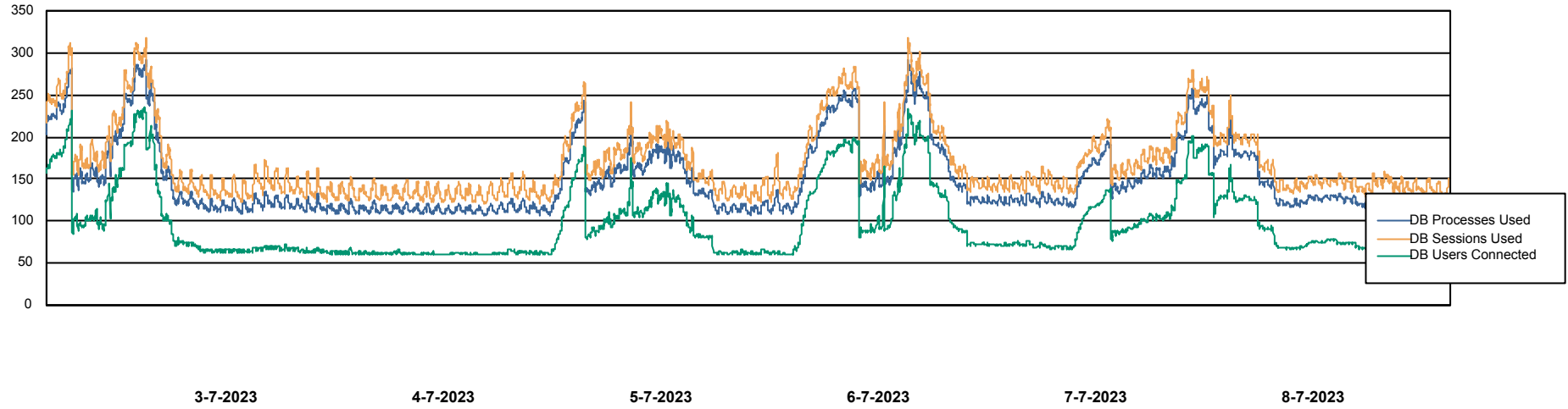


# Weekly SLA Customer Report

Customer NIX\_Production  
Database ID 51



## Database Performance NIXDB\_Production



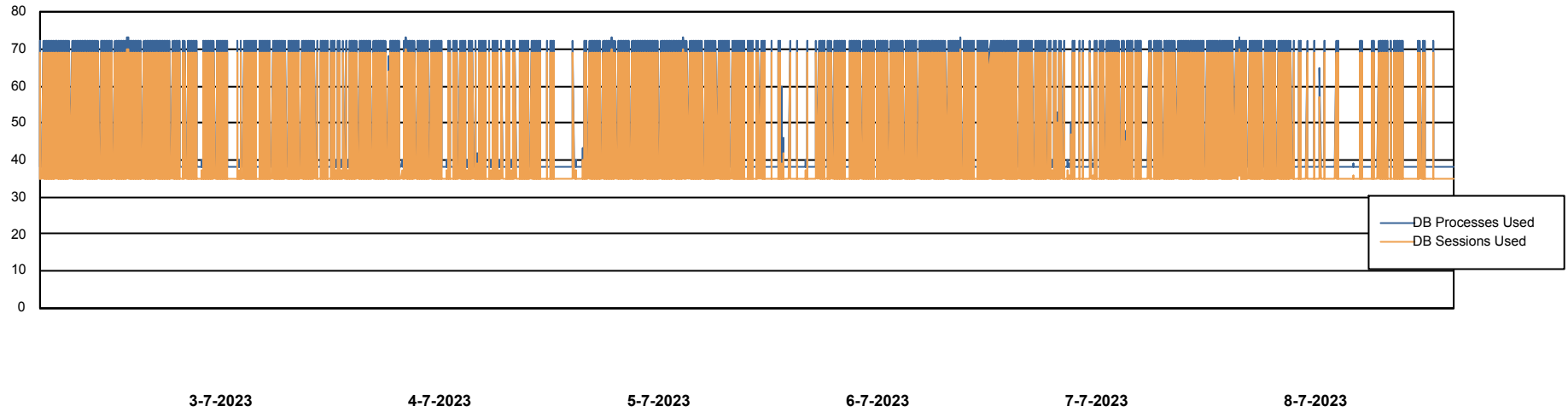
# Weekly SLA Customer Report

Customer NIX\_Production  
Database ID 51



Database Performance NIXDB\_Standby

DB Processes Max 300



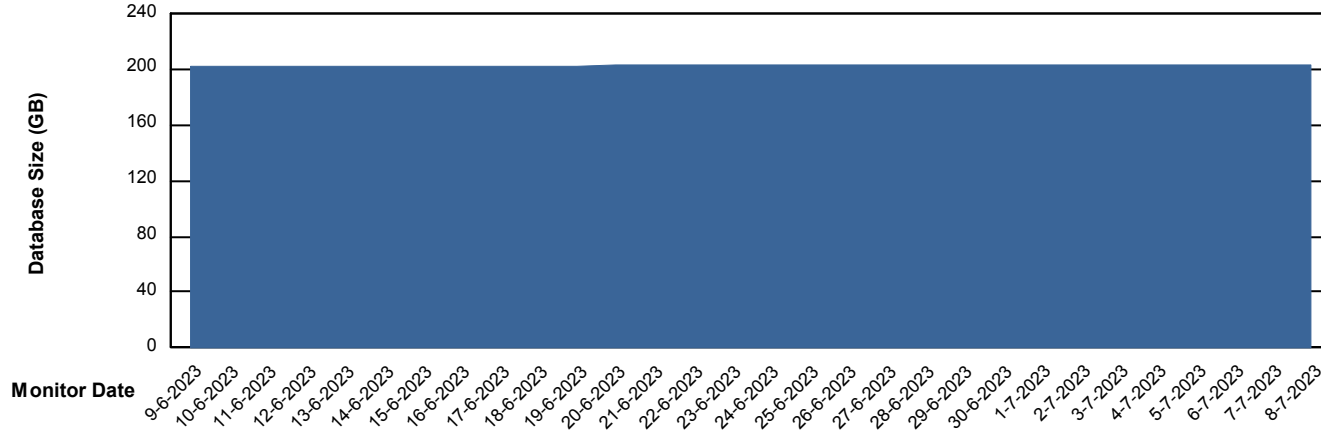
# Weekly SLA Customer Report

Customer NIX\_Production  
Database ID 51



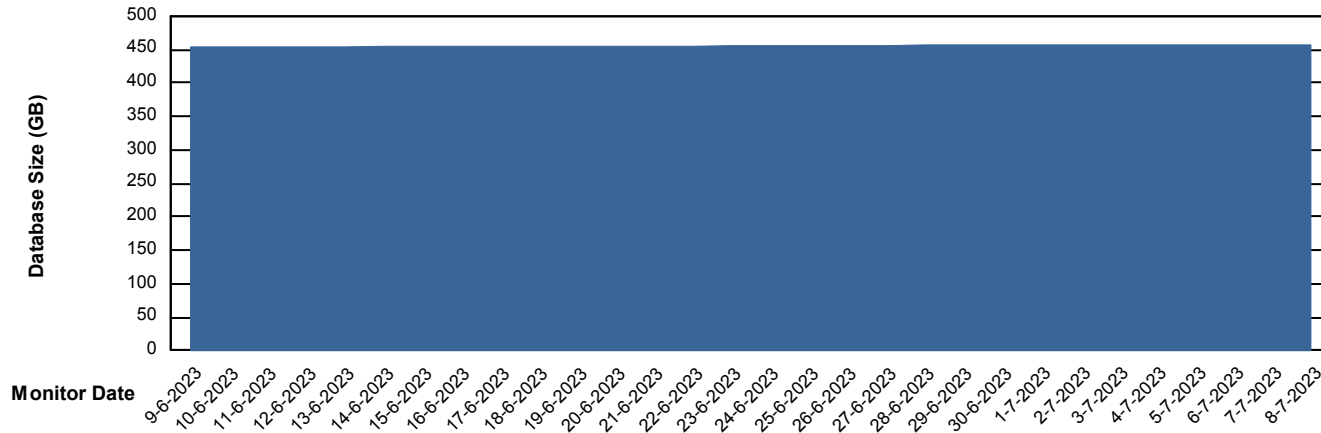
DATABASE SIZE NIXDB\_BI

### Database growth over last month



DATABASE SIZE NIXDB\_Production

### Database growth over last month



# Weekly SLA Customer Report

Customer NIX\_Production  
 Database ID 51



Database Tablespace NIXDB\_BI

Date	Tablespace Name	Filesize (Gb)	Usedsize (Gb)	Percentage free
8-7-2023	ABSDATA	99	83	16
	INDX	140	117	16
7-7-2023	ABSDATA	99	83	16
	INDX	140	117	16
6-7-2023	ABSDATA	99	83	16
	INDX	140	117	16
5-7-2023	ABSDATA	99	83	16
	INDX	140	117	16
4-7-2023	ABSDATA	99	83	16
	INDX	140	117	16
3-7-2023	ABSDATA	99	83	16
	INDX	140	117	16
2-7-2023	ABSDATA	99	83	16
	INDX	140	117	16

# Weekly SLA Customer Report

Customer NIX\_Production  
 Database ID 51



Database Tablespace NIXDB\_Production

Date	Tablespace Name	Filesize (Gb)	Usedsize (Gb)	Percentage free
8-7-2023	ABSDATA	226	186	18
	INDX	298	246	17
7-7-2023	ABSDATA	226	186	18
	INDX	298	246	17
6-7-2023	ABSDATA	226	186	18
	INDX	298	246	17
5-7-2023	ABSDATA	226	186	18
	INDX	298	246	17
4-7-2023	ABSDATA	226	186	18
	INDX	298	246	17
3-7-2023	ABSDATA	226	186	18
	INDX	293	246	16
2-7-2023	ABSDATA	226	186	18
	INDX	293	246	16

BI Status and last ETL error for NIXDB\_BI

	ma 3/7/2023	di 4/7/2023	wo 5/7/2023	do 6/7/2023	vr 7/7/2023	za 8/7/2023
<b>ABS DataWarehouse ETL Health</b>	OK	OK	OK	OK	OK	OK
<b>ABS DWHStaging ETL Health</b>	OK	OK	OK	OK	OK	OK

# Weekly SLA Customer Report

Customer NIX\_Production  
Database ID 51



BI last ETL error for	NIXDB_BI
zo, 2-07-2023	None
di, 4-07-2023	None
vr, 7-07-2023	None
vr, 7-07-2023	None
do, 6-07-2023	None
di, 4-07-2023	None
za, 8-07-2023	None
zo, 2-07-2023	None
wo, 5-07-2023	None
wo, 5-07-2023	None
za, 8-07-2023	None
ma, 3-07-2023	None
ma, 3-07-2023	None
do, 6-07-2023	None

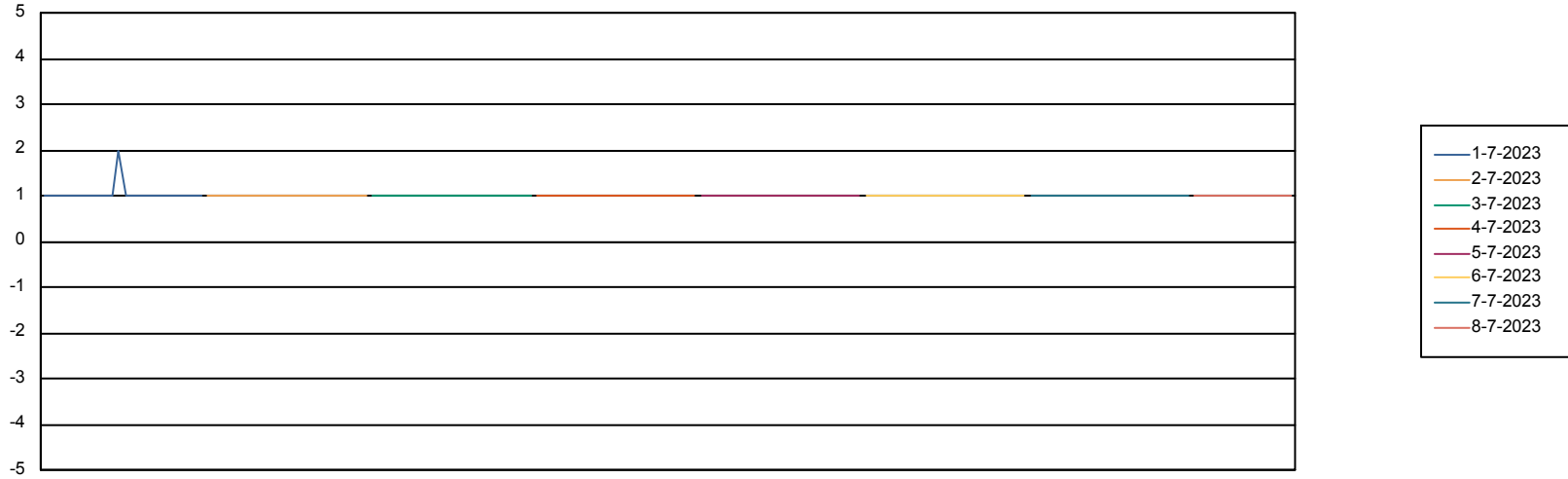
# Weekly SLA Customer Report

Customer NIX\_Production  
Database ID 51



Standby Database Health NIX\_Production

## Recovery lag for last 7 days



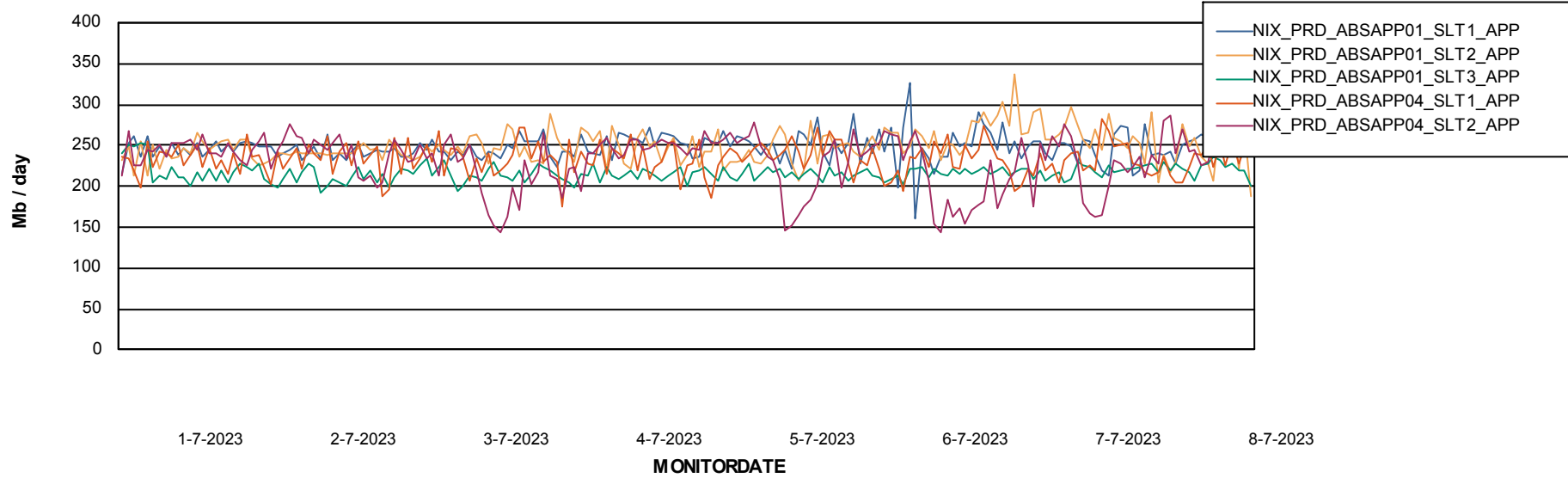
# Weekly SLA Customer Report

Customer NIX\_Production  
Database ID 51

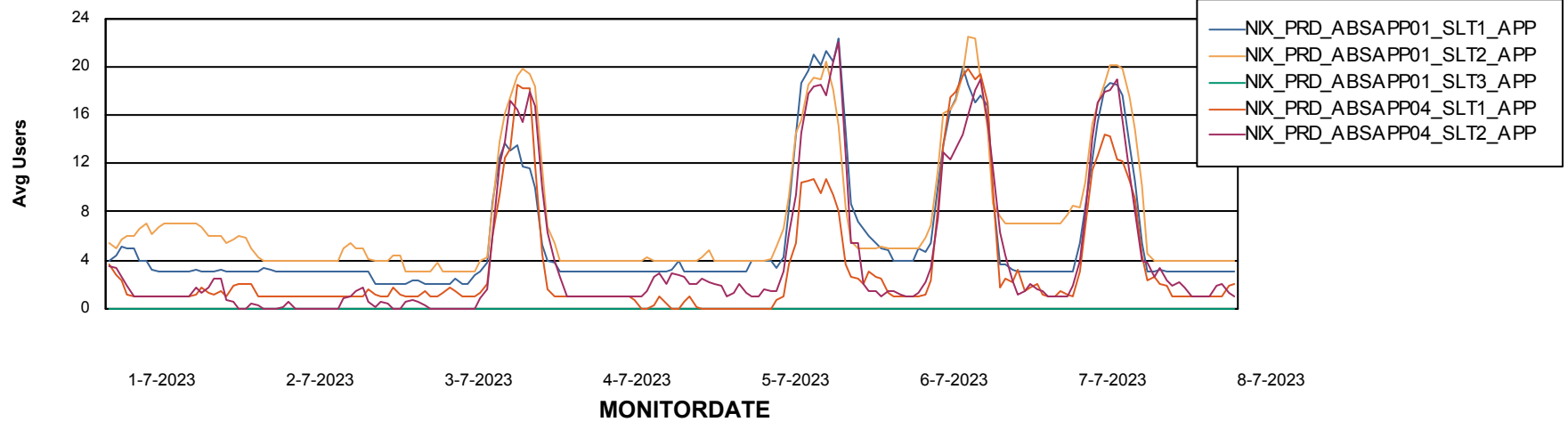


## ABSSolute Application Server Services

### Avg memory used per ABS Server Service



### Avg users per day per ABS server



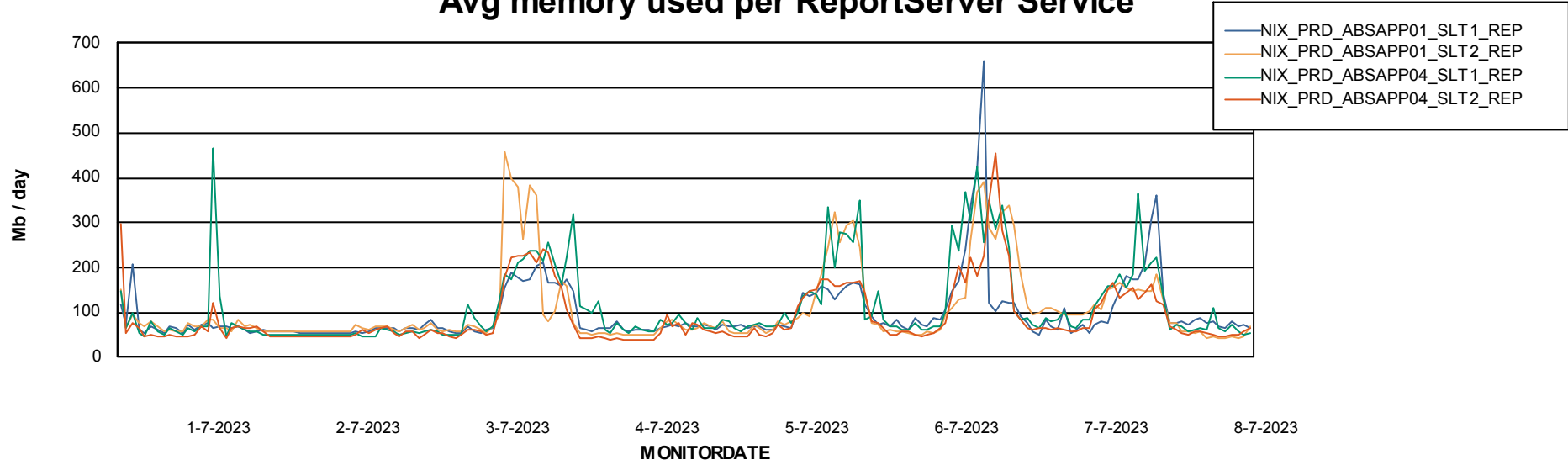
# Weekly SLA Customer Report

Customer NIX\_Production  
Database ID 51



## ABSSolute Application ReportServer Services

### Avg memory used per ReportServer Service



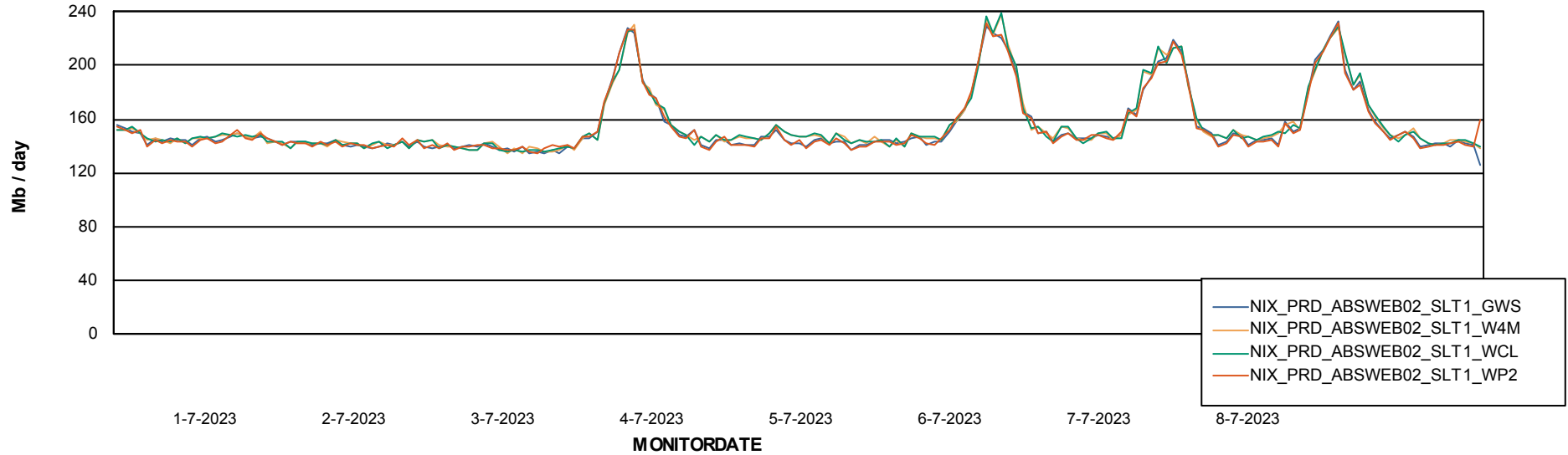
# Weekly SLA Customer Report

Customer NIX\_Production  
Database ID 51



## ABSSolute Web Component Services

### Avg memory used per ABS Web component



# Weekly SLA Customer Report

Customer NIX\_Production  
Database ID 51



### Disaster per ABS component

