

Weekly SLA Customer Report

Customer KLH_Production (24/7)
 Database ID 139



Harddisk Usage KLH_PRD_SRSAPP01

	Free disk space on / (%)	Total disk space on / (Gb)	Used disk space on / (Gb)	Free disk space on /abs (%)	Total disk space on /abs (Gb)	Used disk space on /abs (Gb)
8-7-2023	77	50	11	69	50	16
7-7-2023	77	50	11	68	50	16
6-7-2023	77	50	11	68	50	16
5-7-2023	77	50	11	69	50	16
4-7-2023	77	50	11	69	50	15
3-7-2023	77	50	11	71	50	14
2-7-2023	77	50	11	72	50	14

Harddisk Usage KLH_PRD_SRSAPP02

	Free disk space on / (%)	Total disk space on / (Gb)	Used disk space on / (Gb)	Free disk space on /abs (%)	Total disk space on /abs (Gb)	Used disk space on /abs (Gb)
8-7-2023	78	50	11	54	50	23
7-7-2023	78	50	11	53	50	23
6-7-2023	78	50	11	53	50	23
5-7-2023	78	50	11	54	50	23
4-7-2023	78	50	11	54	50	23
3-7-2023	78	50	11	58	50	21
2-7-2023	78	50	11	59	50	20

Weekly SLA Customer Report

Customer KLH_Production (24/7)
 Database ID 139



Harddisk Usage KLH_PRD_SRSBI01

	Free disk space on / (%)	Total disk space on / (Gb)	Used disk space on / (Gb)	Free disk space on /abs/dumpf	Total disk space on /abs/dumpf	Used disk space on /abs/dumpf	Free disk space on /u01 (%)	Total disk space on /u01 (Gb)	Used disk space on /u01 (Gb)
8-7-2023	43	50	29	19	500	405	63	50	19
7-7-2023	43	50	29	20	500	401	63	50	19
6-7-2023	43	50	29	16	500	420	63	50	19
5-7-2023	43	50	29	20	500	401	63	50	19
4-7-2023	43	50	29	23	500	387	63	50	19
3-7-2023	43	50	29	26	500	371	63	50	19
2-7-2023	43	50	29	27	500	367	63	50	19

Harddisk Usage KLH_PRD_SRSBIDB01

	Free disk space on / (%)	Total disk space on / (Gb)	Used disk space on / (Gb)	Free disk space on /abs/dumpf	Total disk space on /abs/dumpf	Used disk space on /abs/dumpf	Free disk space on /u01 (%)	Total disk space on /u01 (Gb)	Used disk space on /u01 (Gb)
8-7-2023	75	100	25	19	500	405	57	400	171
7-7-2023	75	100	25	20	500	401	56	400	175
6-7-2023	75	100	25	16	500	420	56	400	174
5-7-2023	75	100	25	20	500	401	57	400	174
4-7-2023	75	100	25	23	500	387	57	400	171
3-7-2023	75	100	25	26	500	371	58	400	168
2-7-2023	75	100	25	27	500	367	58	400	167

Weekly SLA Customer Report

Customer KLH_Production (24/7)
Database ID 139



Harddisk Usage KLH_PRD_SRSDDB01

	Free disk space on / (%)	Total disk space on / (Gb)	Used disk space on / (Gb)	Free disk space on /abs/dumpf	Total disk space on /abs/dumpf	Used disk space on /abs/dumpf	Free disk space on /u01 (%)	Total disk space on /u01 (Gb)	Used disk space on /u01 (Gb)
8-7-2023	74	100	26	19	500	405	14	400	342
7-7-2023	74	100	26	20	500	401	13	400	347
6-7-2023	74	100	26	16	500	420	11	400	354
5-7-2023	74	100	26	20	500	401	12	400	353
4-7-2023	74	100	26	23	500	387	12	400	350
3-7-2023	74	100	26	26	500	371	12	400	351
2-7-2023	74	100	26	27	500	367	16	400	337

Harddisk Usage KLH_PRD_SRSDDB02

	Free disk space on / (%)	Total disk space on / (Gb)	Used disk space on / (Gb)	Free disk space on /abs/dumpf	Total disk space on /abs/dumpf	Used disk space on /abs/dumpf	Free disk space on /u01 (%)	Total disk space on /u01 (Gb)	Used disk space on /u01 (Gb)
8-7-2023	74	100	26	19	500	405	14	400	346
7-7-2023	74	100	26	20	500	401	12	400	351
6-7-2023	74	100	26	16	500	420	10	400	358
5-7-2023	74	100	26	20	500	401	11	400	357
4-7-2023	74	100	26	23	500	387	11	400	354
3-7-2023	74	100	26	26	500	371	14	400	343
2-7-2023	74	100	26	27	500	367	20	400	318

Weekly SLA Customer Report

Customer KLH_Production (24/7)
 Database ID 139



Harddisk Usage KLH_PRD_SRSNFS01

	Free disk space on / (%)	Total disk space on / (Gb)	Used disk space on / (Gb)	Free disk space on /var/nfs/ex	Total disk space on /var/nfs/ex	Used disk space on /var/nfs/ex	Free disk space on /var/nfs/ora	Total disk space on /var/nfs/ora	Used disk space on /var/nfs/ora
8-7-2023	64	30	11	66	50	17	19	500	405
7-7-2023	64	30	11	62	50	19	20	500	401
6-7-2023	64	30	11	7	50	47	16	500	420
5-7-2023	64	30	11	8	50	46	20	500	401
4-7-2023	64	30	11	9	50	45	23	500	387
3-7-2023	64	30	11	12	50	44	26	500	371
2-7-2023	64	30	11	14	50	43	27	500	367

Harddisk Usage KLH_PRD_SRSSUPPORT01_DISTRIB

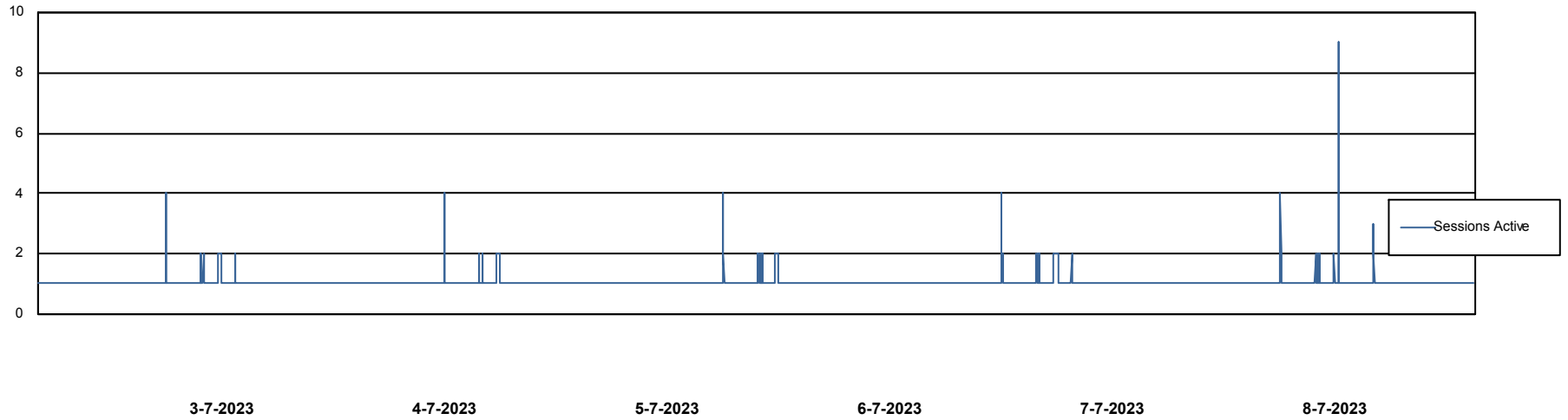
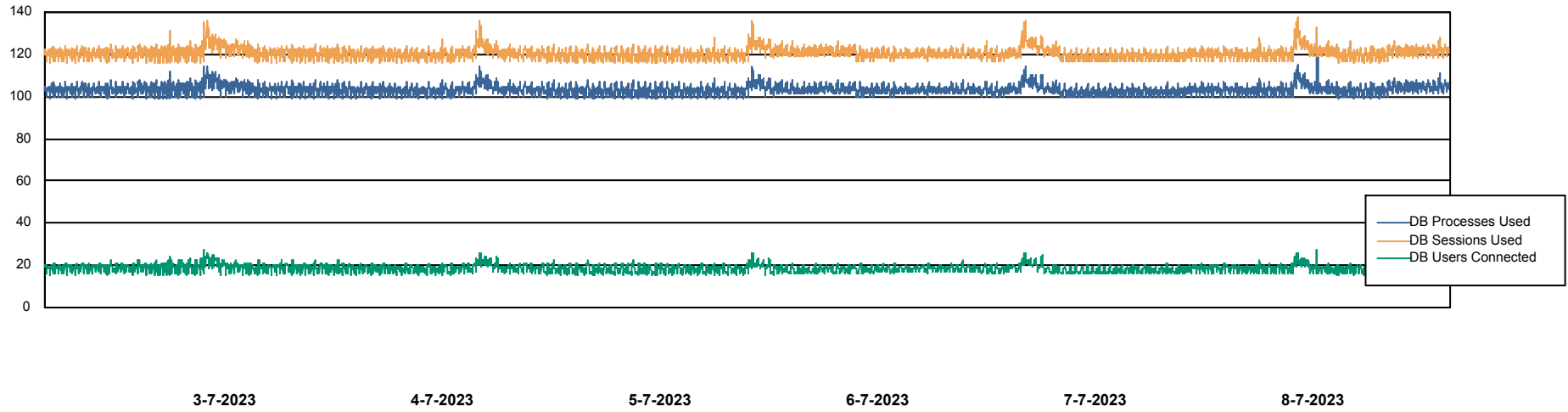
	Free disk space on C: (%)	Total disk space on C: (Gb)	Used disk space on C: (Gb)
8-7-2023	49	100	51
7-7-2023	48	100	52
6-7-2023	49	100	51
5-7-2023	50	100	50
4-7-2023	50	100	50
3-7-2023	51	100	49
2-7-2023	51	100	49

Weekly SLA Customer Report

Customer KLH_Production (24/7)
Database ID 139



Database Performance KLHDB_BI

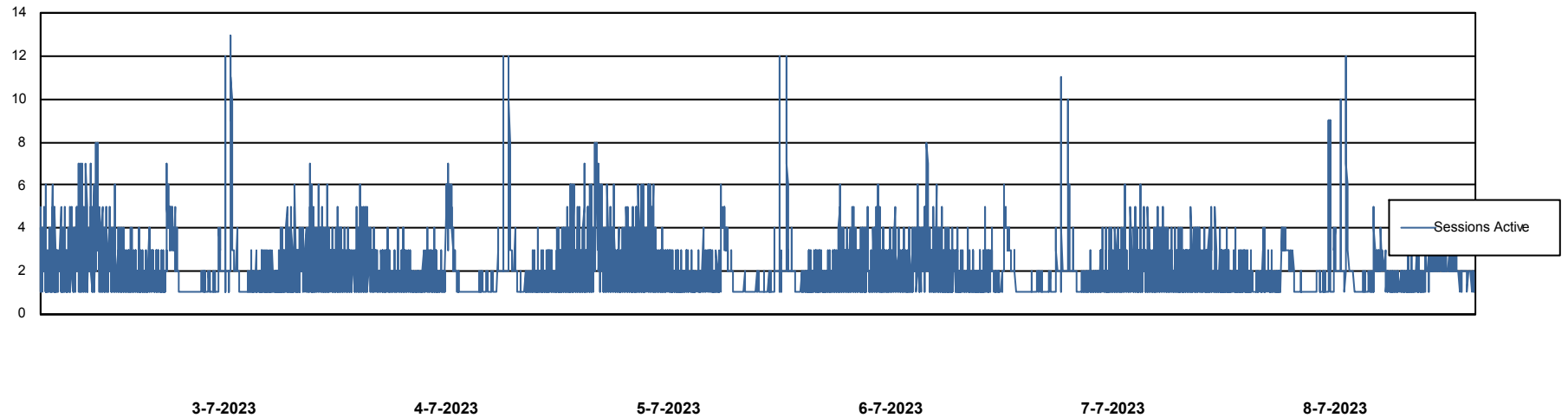
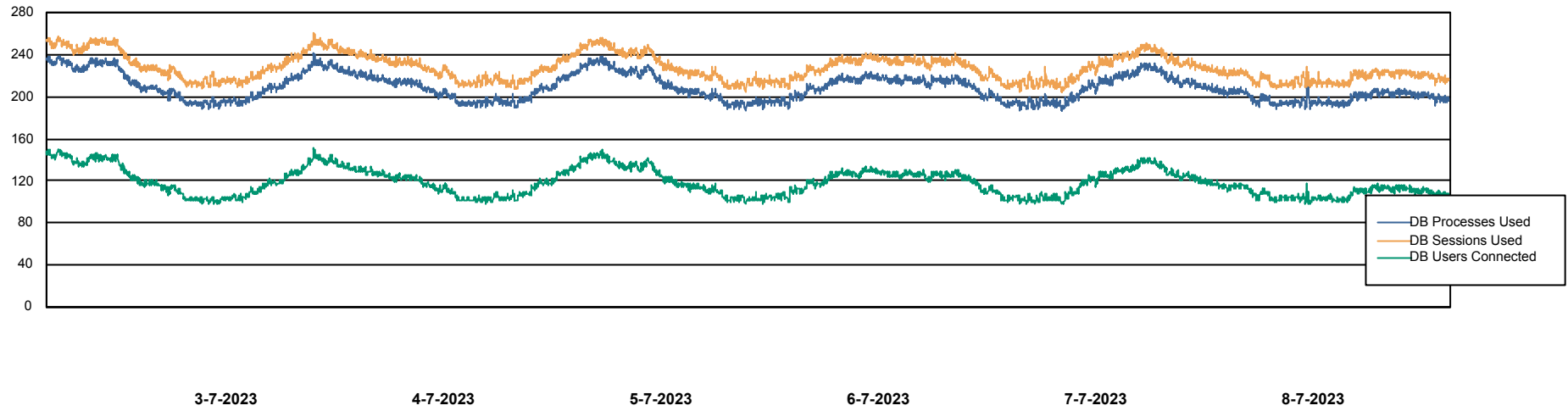


Weekly SLA Customer Report

Customer KLH_Production (24/7)
Database ID 139



Database Performance KLHDB_Production



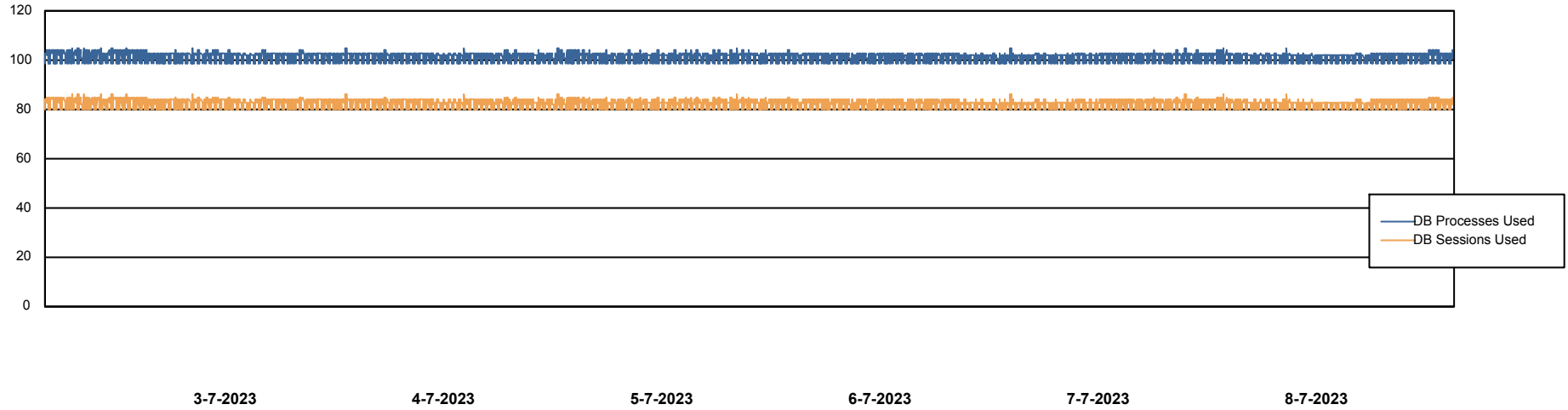
Weekly SLA Customer Report

Customer KLH_Production (24/7)
Database ID 139



Database Performance KLHDB_Standby

DB Processes Max 0
DB Processes Max 4
DB Processes Max 1,000



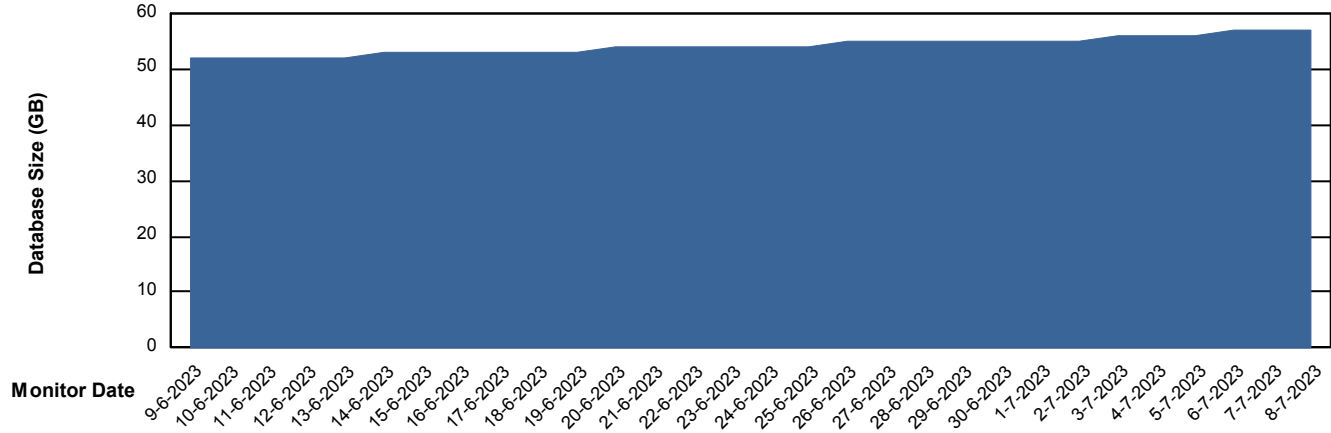
Weekly SLA Customer Report

Customer KLH_Production (24/7)
Database ID 139



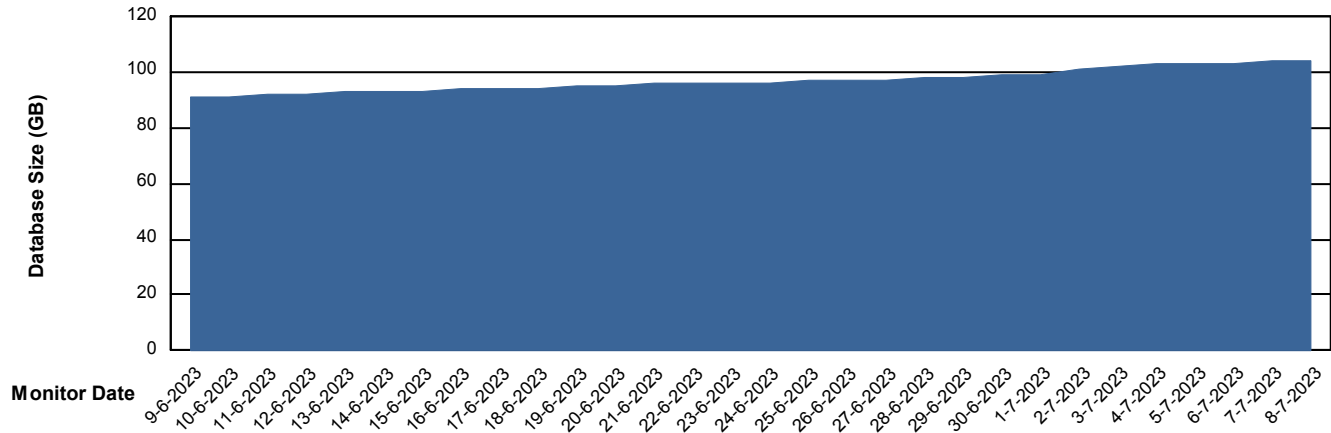
DATABASE SIZE KLHDB_BI

Database growth over last month



DATABASE SIZE KLHDB_Production

Database growth over last month



Weekly SLA Customer Report

Customer KLH_Production (24/7)
Database ID 139



Database Tablespace KLHDB_BI

Date	Tablespace Name	Filesize (Gb)	Usedsize (Gb)	Percentage free
8-7-2023	ABSDATA	20	17	17
	INDX	31	25	19
7-7-2023	ABSDATA	20	17	17
	INDX	31	25	19
6-7-2023	ABSDATA	20	17	17
	INDX	31	25	19
5-7-2023	ABSDATA	20	17	17
	INDX	31	25	19
4-7-2023	ABSDATA	20	17	17
	INDX	31	25	20
3-7-2023	ABSDATA	20	16	18
	INDX	31	25	21
2-7-2023	ABSDATA	20	16	19
	INDX	29	24	16

Weekly SLA Customer Report

Customer KLH_Production (24/7)
 Database ID 139



Database Tablespace KLHDB_Production

Date	Tablespace Name	Filesize (Gb)	Usedsize (Gb)	Percentage free
8-7-2023	ABSDATA	106	89	16
	INDX	8	2	81
7-7-2023	ABSDATA	106	88	17
	INDX	8	2	81
6-7-2023	ABSDATA	106	88	17
	INDX	8	2	81
5-7-2023	ABSDATA	106	88	17
	INDX	8	1	81
4-7-2023	ABSDATA	104	87	16
	INDX	8	1	81
3-7-2023	ABSDATA	104	87	17
	INDX	8	1	82
2-7-2023	ABSDATA	100	86	14
	INDX	8	1	82

BI Status and last ETL error for KLHDB_BI

	ma 3/7/2023	di 4/7/2023	wo 5/7/2023	do 6/7/2023	vr 7/7/2023	za 8/7/2023
ABS DataWarehouse ETL Health	OK	OK	OK	OK	OK	Not OK
ABS DWHStaging ETL Health	OK	OK	OK	OK	OK	Not OK

Weekly SLA Customer Report

Customer KLH_Production (24/7)
Database ID 139



BI last ETL error for	KLHDB_BI
zo, 2-07-2023	None
za, 8-07-2023	None
za, 8-07-2023	None
za, 8-07-2023	ORA-01722: invalid numberORA-02063: preceding line from ABSSOLUTE_LOCATION
ma, 3-07-2023	None
di, 4-07-2023	None
vr, 7-07-2023	None
zo, 2-07-2023	None
wo, 5-07-2023	None
wo, 5-07-2023	None
do, 6-07-2023	None
di, 4-07-2023	None
ma, 3-07-2023	None
do, 6-07-2023	None
vr, 7-07-2023	None

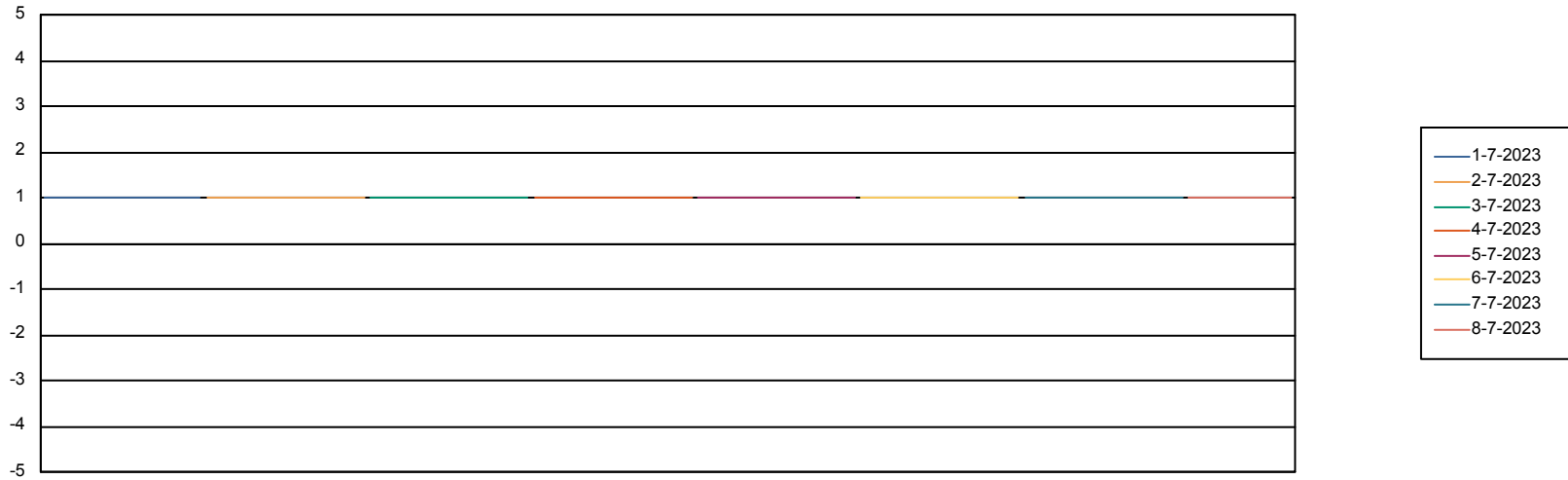
Weekly SLA Customer Report

Customer KLH_Production (24/7)
Database ID 139



Standby Database Health KLH_Production (24/7)

Recovery lag for last 7 days



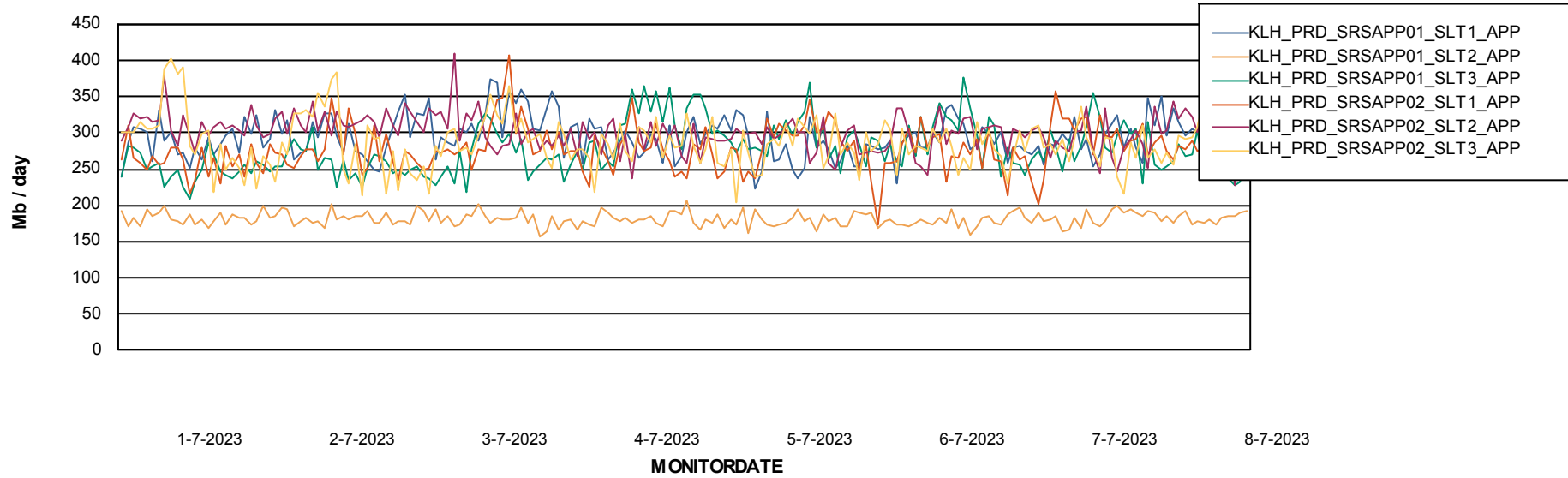
Weekly SLA Customer Report

Customer KLH_Production (24/7)
Database ID 139

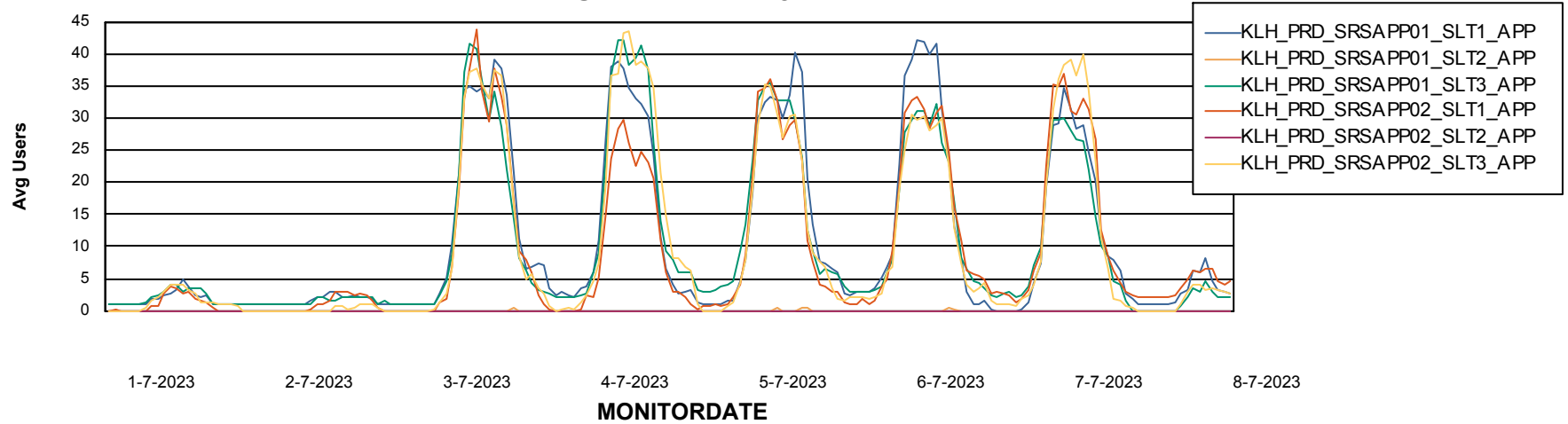


ABSSolute Application Server Services

Avg memory used per ABS Server Service



Avg users per day per ABS server



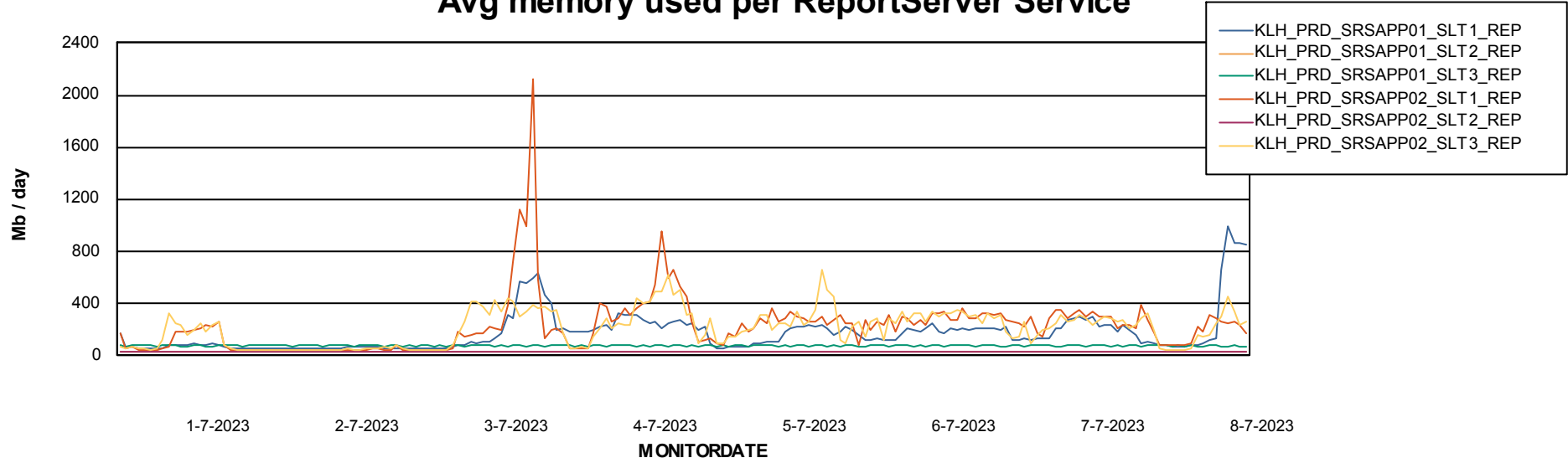
Weekly SLA Customer Report

Customer KLH_Production (24/7)
Database ID 139



ABSSolute Application ReportServer Services

Avg memory used per ReportServer Service



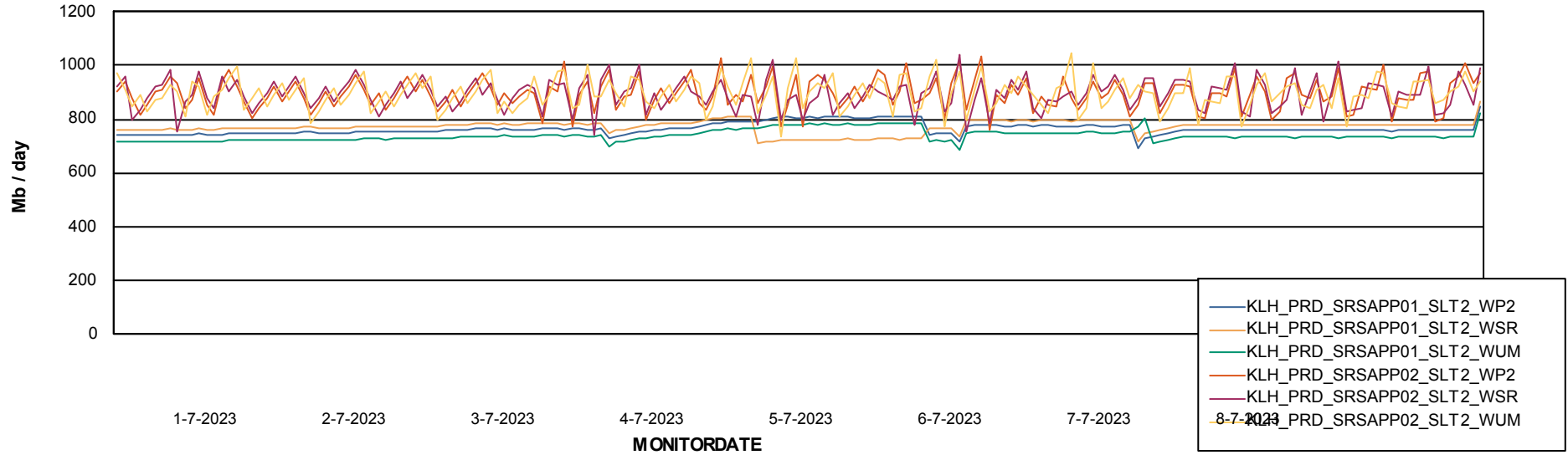
Weekly SLA Customer Report

Customer KLH_Production (24/7)
Database ID 139



ABSSolute Web Component Services

Avg memory used per ABS Web component



Weekly SLA Customer Report

Customer KLH_Production (24/7)
Database ID 139



Disaster per ABS component

