

# Weekly SLA Customer Report

Customer AUJ Production  
 Database ID 41



Harddisk Usage AUJ Prod. ABSSolute DB server: PABSDB1

	Free disk space on / (%)	Total disk space on / (Gb)	Used disk space on / (Gb)	Free disk space on /bk (%)	Total disk space on /bk (Gb)	Used disk space on /bk (Gb)	Free disk space on /u02 (%)	Total disk space on /u02 (Gb)	Used disk space on /u02 (Gb)
8-7-2023	86	200	27	55	1,200	540	18	1,799	1,470
7-7-2023	86	200	27	51	1,200	586	18	1,799	1,470
6-7-2023	86	200	27	51	1,200	586	18	1,799	1,470
5-7-2023	86	200	27	51	1,200	586	18	1,799	1,470
4-7-2023	86	200	27	52	1,200	582	18	1,799	1,470
3-7-2023	86	200	27	52	1,200	578	18	1,799	1,470
2-7-2023	87	200	27	52	1,200	577	18	1,799	1,470

Harddisk Usage AUJ Prod. BI DB server: PABSBI1

	Free disk space on / (%)	Total disk space on / (Gb)	Used disk space on / (Gb)	Free disk space on /u02 (%)	Total disk space on /u02 (Gb)	Used disk space on /u02 (Gb)
8-7-2023	46	200	107	68	1,000	322
7-7-2023	46	200	107	68	1,000	318
6-7-2023	46	200	107	68	1,000	318
5-7-2023	46	200	107	68	1,000	318
4-7-2023	46	200	107	68	1,000	317
3-7-2023	46	200	107	68	1,000	317
2-7-2023	46	200	107	68	1,000	320

# Weekly SLA Customer Report

Customer AUJ Production  
Database ID 41



## Harddisk Usage AUJ\_PRD\_ABS\_APP1

	Free disk space on / (%)	Total disk space on / (Gb)	Used disk space on / (Gb)	Free disk space on /abs (%)	Total disk space on /abs (Gb)	Used disk space on /abs (Gb)
8-7-2023	70	40	12	57	85	37
7-7-2023	70	40	12	57	85	37
6-7-2023	70	40	12	57	85	36
5-7-2023	70	40	12	59	85	35
4-7-2023	70	40	12	61	85	33
3-7-2023	70	40	12	63	85	31
2-7-2023	70	40	12	64	85	31

## Harddisk Usage AUJ\_PRD\_ABS\_APP2

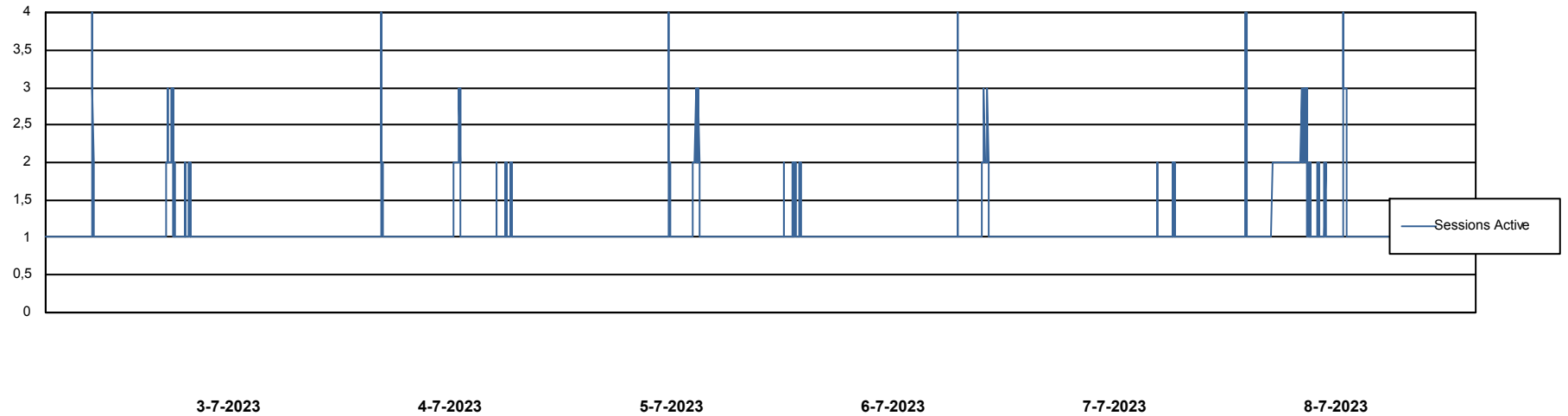
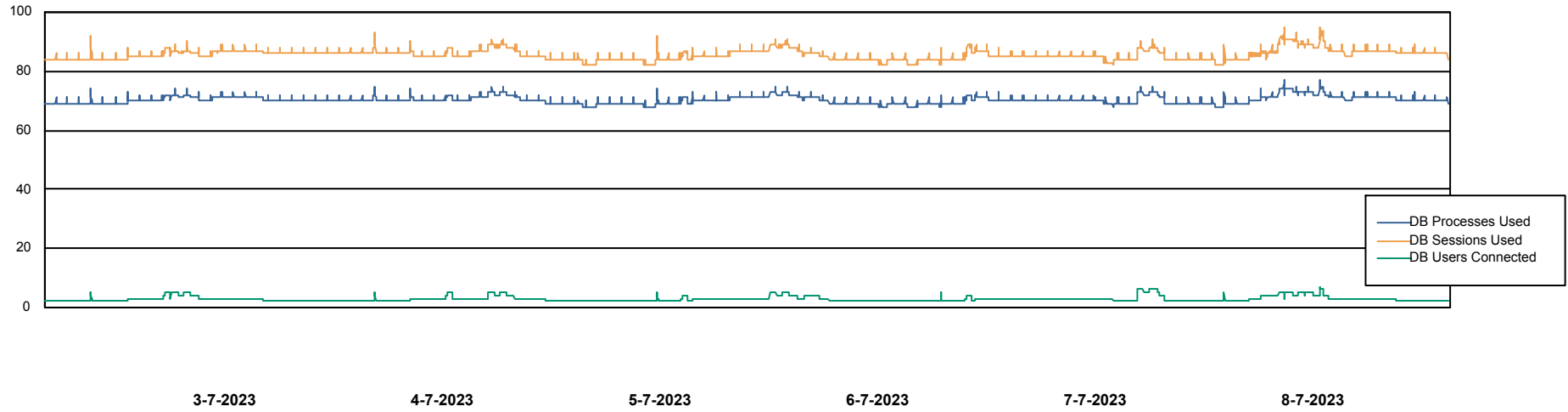
	Free disk space on / (%)	Total disk space on / (Gb)	Used disk space on / (Gb)	Free disk space on /abs (%)	Total disk space on /abs (Gb)	Used disk space on /abs (Gb)
8-7-2023	84	40	6	72	85	24
7-7-2023	84	40	6	72	85	24
6-7-2023	84	40	6	72	85	24
5-7-2023	84	40	6	73	85	23
4-7-2023	84	40	6	73	85	23
3-7-2023	84	40	6	74	85	22
2-7-2023	84	40	6	75	85	22

# Weekly SLA Customer Report

Customer AUJ Production  
Database ID 41



## Database Performance AUJ Prod. BI DB (PABSBI1 server)

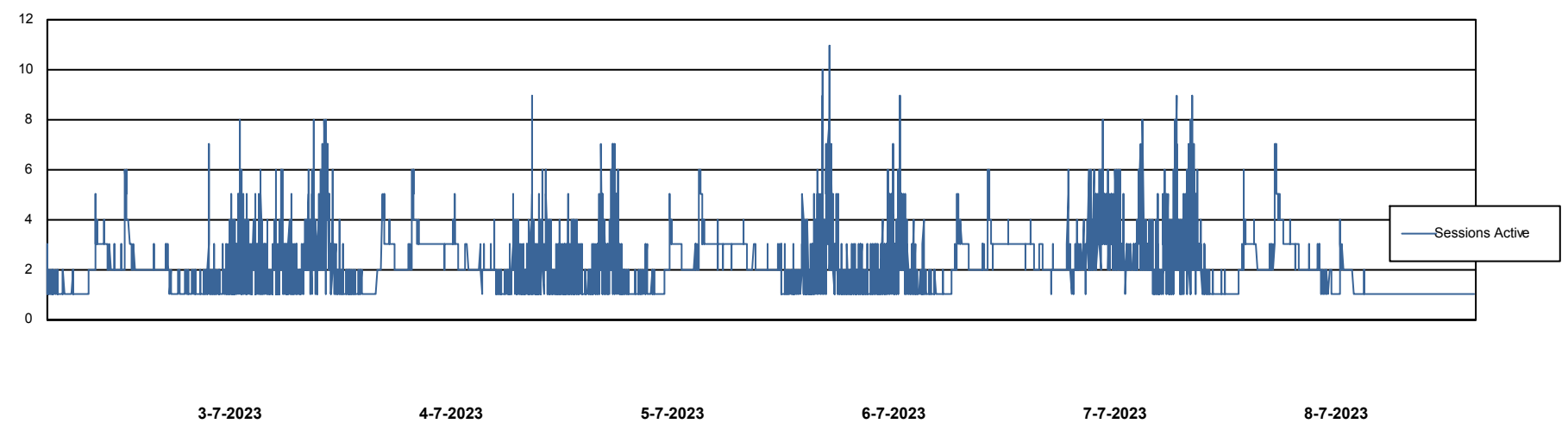
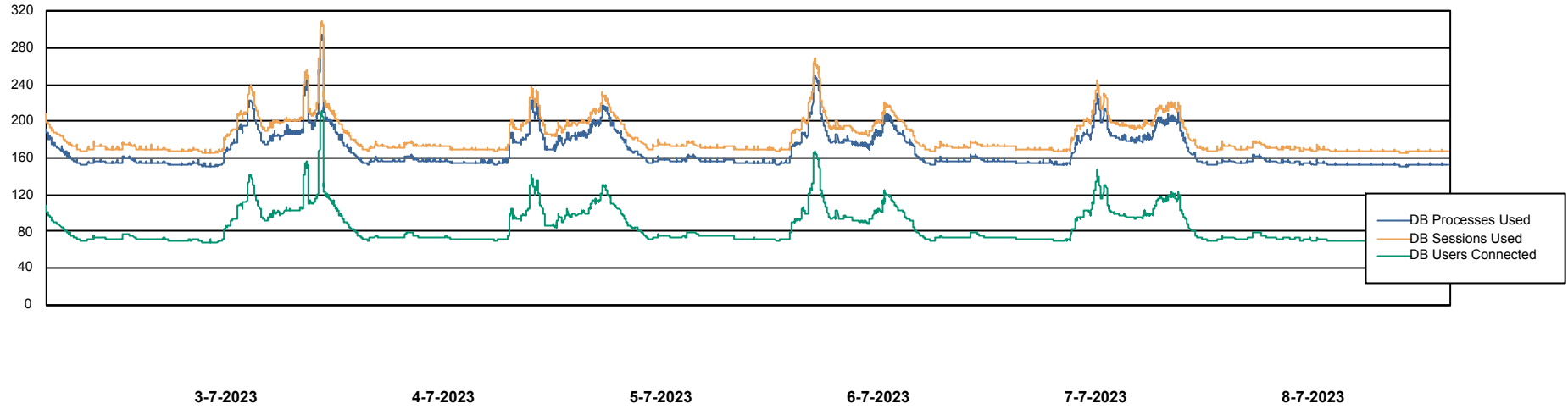


# Weekly SLA Customer Report

Customer AUJ Production  
Database ID 41



## Database Performance AUJ\_DB1\_Primary



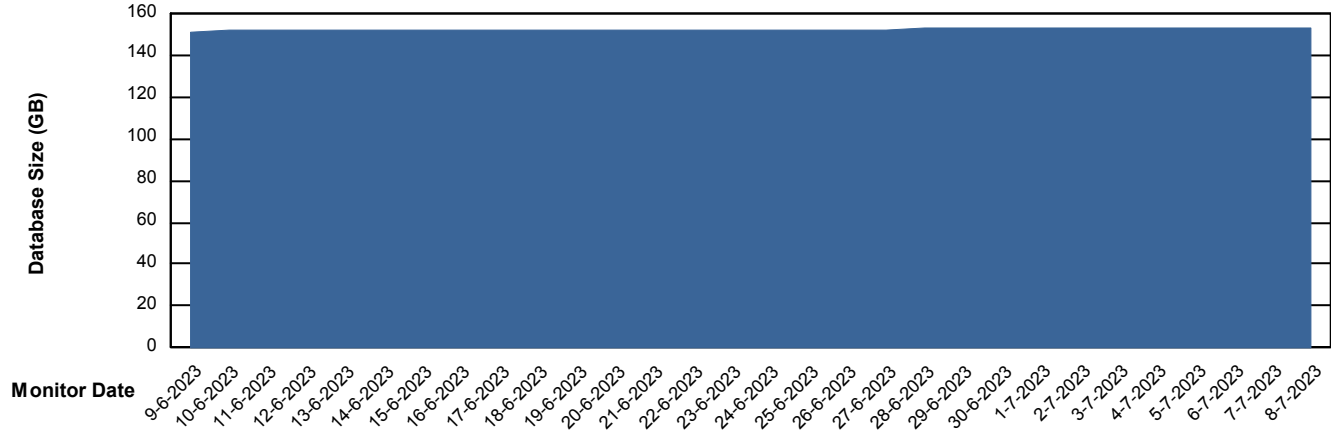
# Weekly SLA Customer Report

Customer AUJ Production  
Database ID 41



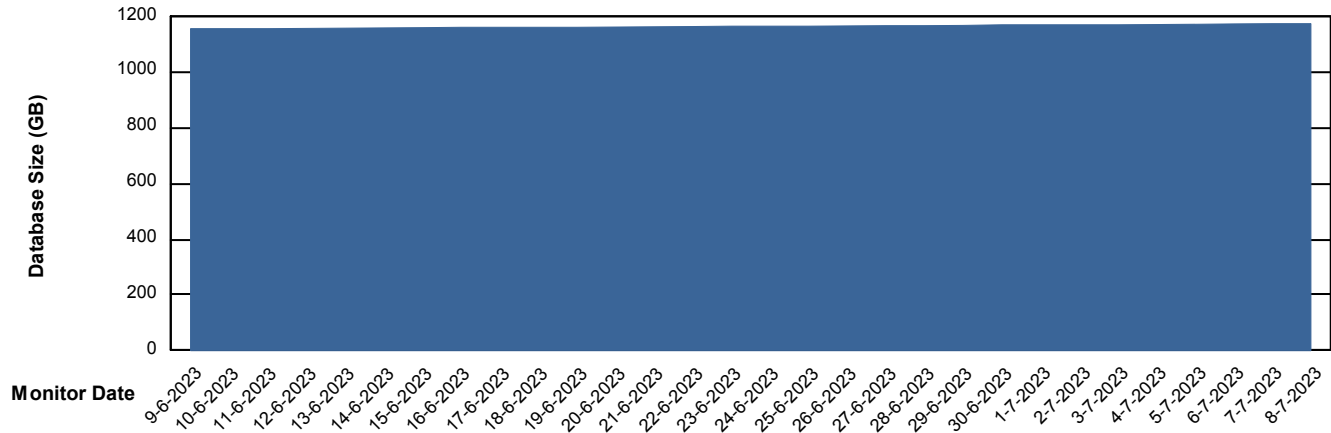
DATABASE SIZE AUJ Prod. BI DB (PABSBI1 server)

### Database growth over last month



DATABASE SIZE AUJ\_DB1\_Primary

### Database growth over last month



# Weekly SLA Customer Report

Customer AUJ Production  
 Database ID 41



Database Tablespace AUJ Prod. BI DB (PABSBI1 server)

Date	Tablespace Name	Filesize (Gb)	Usedsize (Gb)	Percentage free
8-7-2023	ABSDATA	150	125	17
	INDX	30	25	16
7-7-2023	ABSDATA	150	125	17
	INDX	30	25	16
6-7-2023	ABSDATA	150	125	17
	INDX	30	25	16
5-7-2023	ABSDATA	150	125	17
	INDX	30	25	16
4-7-2023	ABSDATA	150	125	17
	INDX	30	25	16
3-7-2023	ABSDATA	150	125	17
	INDX	30	25	16
2-7-2023	ABSDATA	150	125	17
	INDX	30	25	17

# Weekly SLA Customer Report

Customer AUJ Production  
 Database ID 41



Database Tablespace AUJ\_DB1\_Primary

Date	Tablespace Name	Filesize (Gb)	Usedsize (Gb)	Percentage free
8-7-2023	ABSDATA	659	552	16
	INDX	734	613	17
7-7-2023	ABSDATA	659	552	16
	INDX	734	613	17
6-7-2023	ABSDATA	659	552	16
	INDX	734	612	17
5-7-2023	ABSDATA	659	551	16
	INDX	734	612	17
4-7-2023	ABSDATA	659	551	16
	INDX	734	612	17
3-7-2023	ABSDATA	659	550	16
	INDX	734	611	17
2-7-2023	ABSDATA	659	550	17
	INDX	734	611	17

BI Status and last ETL error for AUJ Prod. BI DB (PABSBI1 server)

	ma 3/7/2023	di 4/7/2023	wo 5/7/2023	do 6/7/2023	vr 7/7/2023	za 8/7/2023
<b>ABS DataWarehouse ETL Health</b>	OK	OK	OK	OK	OK	OK
<b>ABS DWHStaging ETL Health</b>	OK	OK	OK	OK	OK	OK

# Weekly SLA Customer Report

Customer AUJ Production  
Database ID 41



BI last ETL error for	AUJ Prod. BI DB (PABSBI1 server)
wo, 5-07-2023	None
zo, 2-07-2023	None
vr, 7-07-2023	None
za, 8-07-2023	None
vr, 7-07-2023	None
di, 4-07-2023	None
ma, 3-07-2023	None
di, 4-07-2023	None
zo, 2-07-2023	None
wo, 5-07-2023	None
do, 6-07-2023	None
do, 6-07-2023	None
ma, 3-07-2023	None
za, 8-07-2023	None

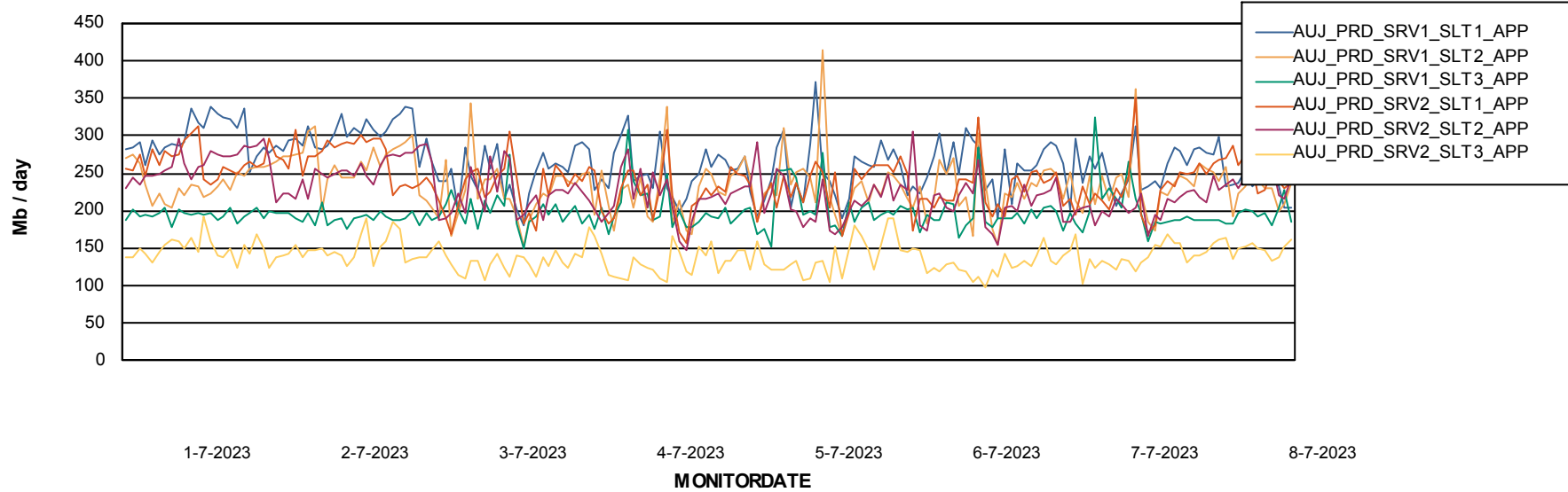
# Weekly SLA Customer Report

Customer AUJ Production  
Database ID 41

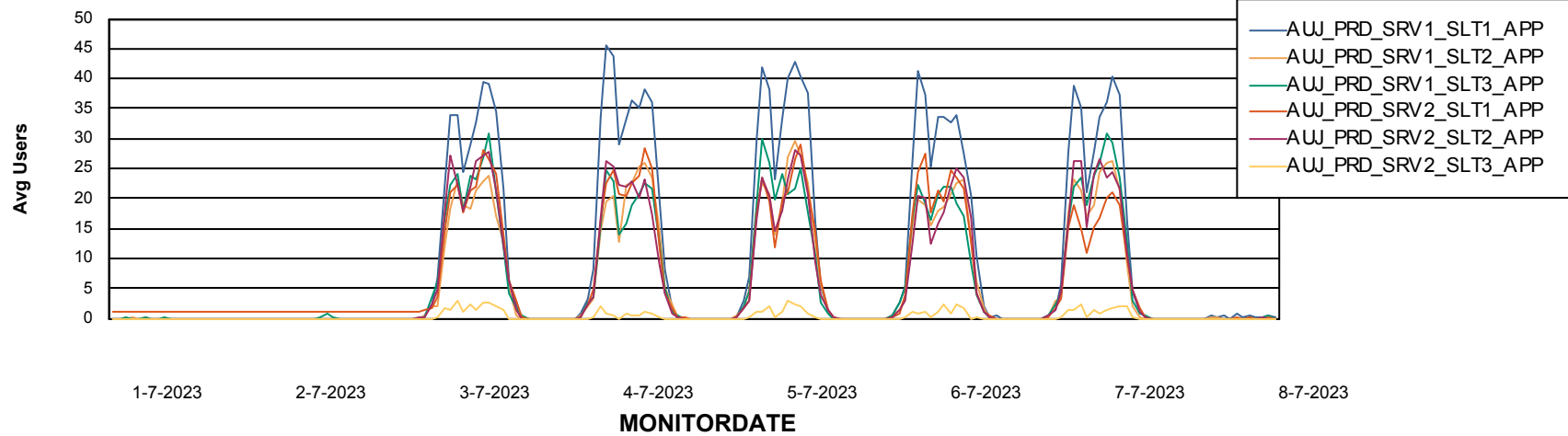


## ABSSolute Application Server Services

### Avg memory used per ABS Server Service



### Avg users per day per ABS server



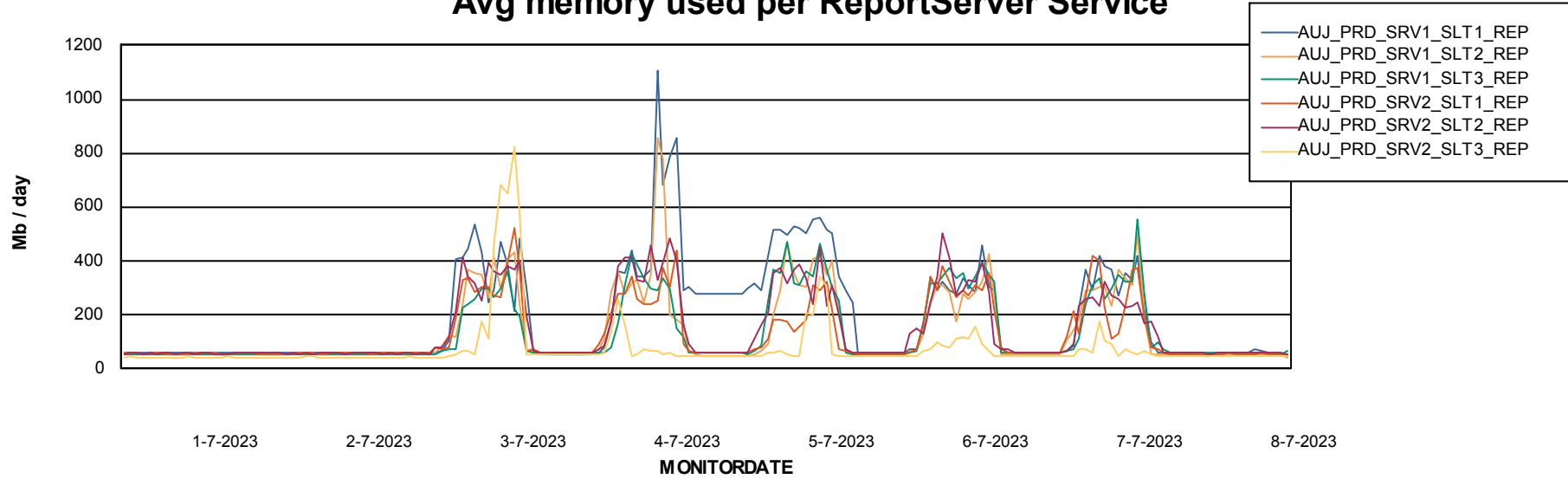
# Weekly SLA Customer Report

Customer AUJ Production  
Database ID 41



## ABSSolute Application ReportServer Services

### Avg memory used per ReportServer Service



### Disaster per ABS component

