

Weekly SLA Customer Report

Customer NIX_Production
 Database ID 51



Harddisk Usage NIX_PRD_ABSAPP01

	Free disk space on C: (%)	Total disk space on C: (Gb)	Used disk space on C: (Gb)	Free disk space on E: (%)	Total disk space on E: (Gb)	Used disk space on E: (Gb)
27-5-2023	70	207	63	100	98	0
26-5-2023	67	207	68	100	98	0
25-5-2023	65	207	72	100	98	0
24-5-2023	65	207	72	100	98	0
23-5-2023	65	207	72	100	98	0
22-5-2023	65	207	72	100	98	0
21-5-2023	65	207	72	100	98	0

Harddisk Usage NIX_PRD_ABSAPP04

	Free disk space on C: (%)	Total disk space on C: (Gb)	Used disk space on C: (Gb)
27-5-2023	20	127	102
26-5-2023	21	127	100
25-5-2023	22	127	98
24-5-2023	22	127	98
23-5-2023	22	127	98
22-5-2023	23	127	98
21-5-2023	23	127	98

Weekly SLA Customer Report

Customer NIX_Production
Database ID 51



Harddisk Usage NIX_PRD_ABSWEB02

	Free disk space on C: (%)	Total disk space on C: (Gb)	Used disk space on C: (Gb)
27-5-2023	87	300	38
26-5-2023	88	300	37
25-5-2023	88	300	37
24-5-2023	88	300	37
23-5-2023	88	300	37
22-5-2023	88	300	37
21-5-2023	88	300	37

Harddisk Usage NIX_PRD_BISRV

	Free disk space on C: (%)	Total disk space on C: (Gb)	Used disk space on C: (Gb)
27-5-2023	46	836	454
26-5-2023	46	836	452
25-5-2023	46	836	452
24-5-2023	46	836	453
23-5-2023	46	836	451
22-5-2023	46	836	452
21-5-2023	46	836	452

Weekly SLA Customer Report

Customer NIX_Production
 Database ID 51



Harddisk Usage NIX_PRD_ORCDB1

	Free disk space on C: (%)	Total disk space on C: (Gb)	Used disk space on C: (Gb)	Free disk space on D: (%)	Total disk space on D: (Gb)	Used disk space on D: (Gb)	Free disk space on E: (%)	Total disk space on E: (Gb)	Used disk space on E: (Gb)	Free disk space on F: (%)
27-5-2023	69	554	169	47	586	309	52	605	294	38
26-5-2023	69	554	171	47	586	309	52	605	294	37
25-5-2023	69	554	170	47	586	309	52	605	294	37
24-5-2023	69	554	171	47	586	309	52	605	294	37
23-5-2023	69	554	170	47	586	309	52	605	294	38
22-5-2023	69	554	170	47	586	309	52	605	294	38
21-5-2023	69	554	170	47	586	309	52	605	294	38

Harddisk Usage NIX_PRD_ORCDB2

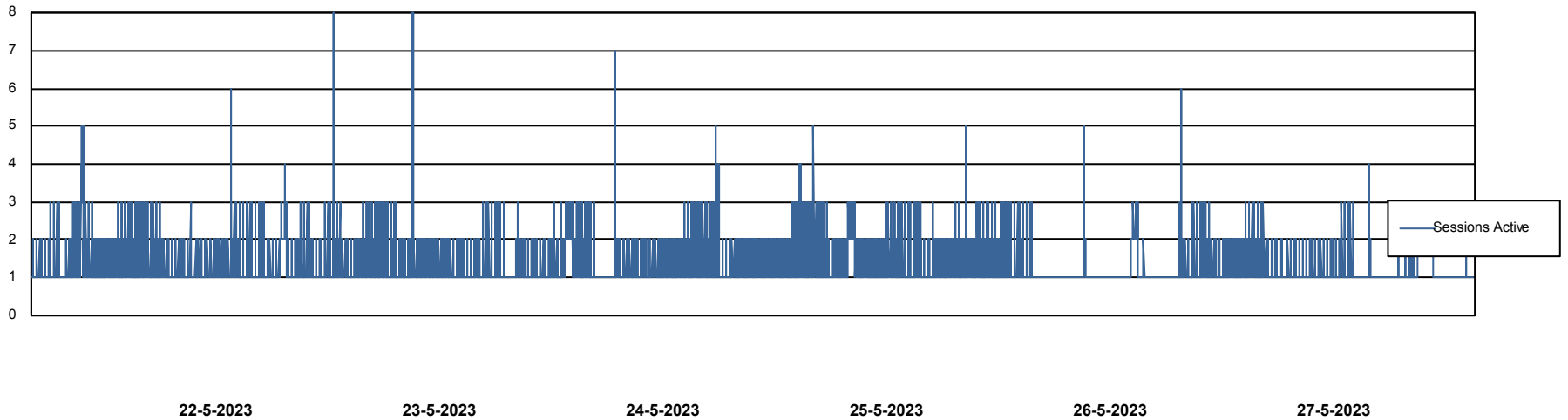
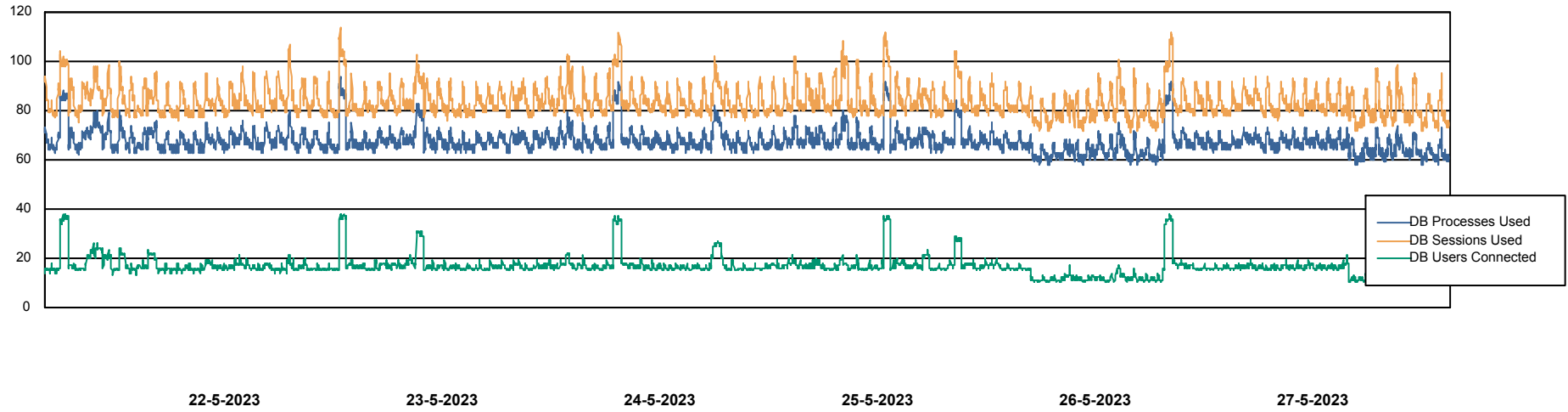
	Free disk space on C: (%)	Total disk space on C: (Gb)	Used disk space on C: (Gb)	Free disk space on D: (%)	Total disk space on D: (Gb)	Used disk space on D: (Gb)	Free disk space on E: (%)	Total disk space on E: (Gb)	Used disk space on E: (Gb)	Free disk space on F: (%)
27-5-2023	88	574	67	43	488	280	57	684	294	87
26-5-2023	88	574	67	43	488	280	57	684	293	87
25-5-2023	88	574	66	43	488	280	57	684	293	87
24-5-2023	88	574	67	43	488	280	57	684	294	87
23-5-2023	89	574	66	43	488	280	57	684	293	88
22-5-2023	89	574	66	43	488	280	57	684	293	88
21-5-2023	89	574	66	43	488	280	57	684	293	88

Weekly SLA Customer Report

Customer NIX_Production
Database ID 51



Database Performance NIXDB_BI

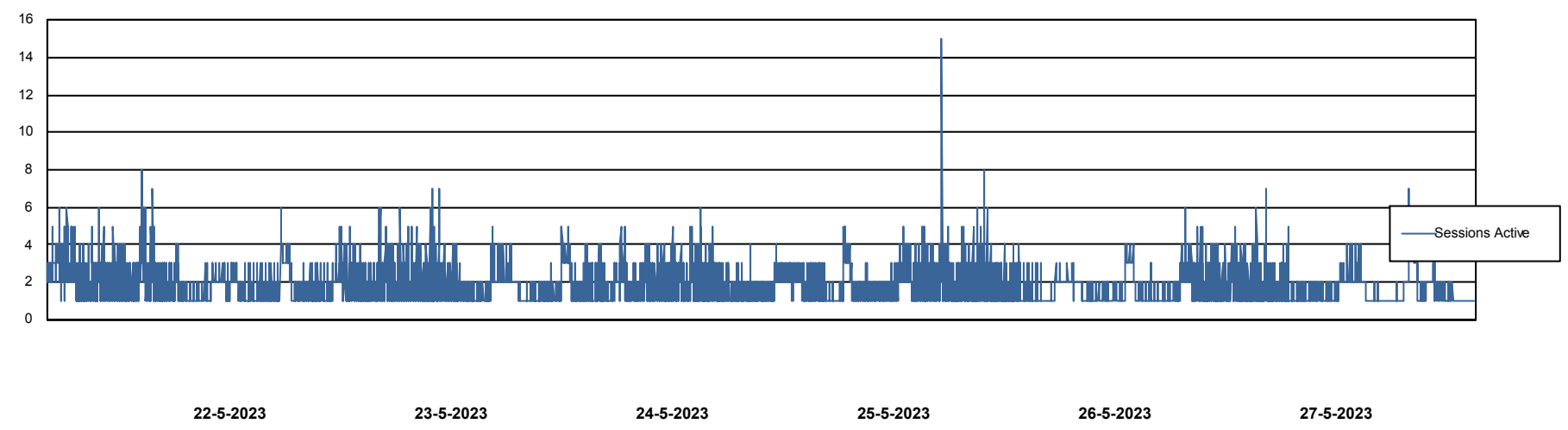
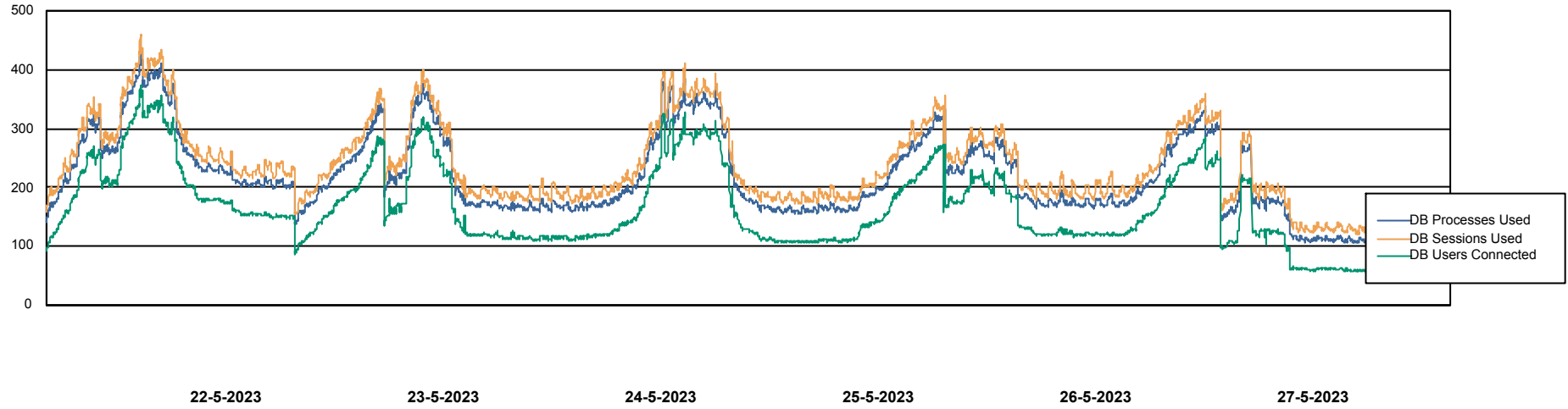


Weekly SLA Customer Report

Customer NIX_Production
Database ID 51



Database Performance NIXDB_Production



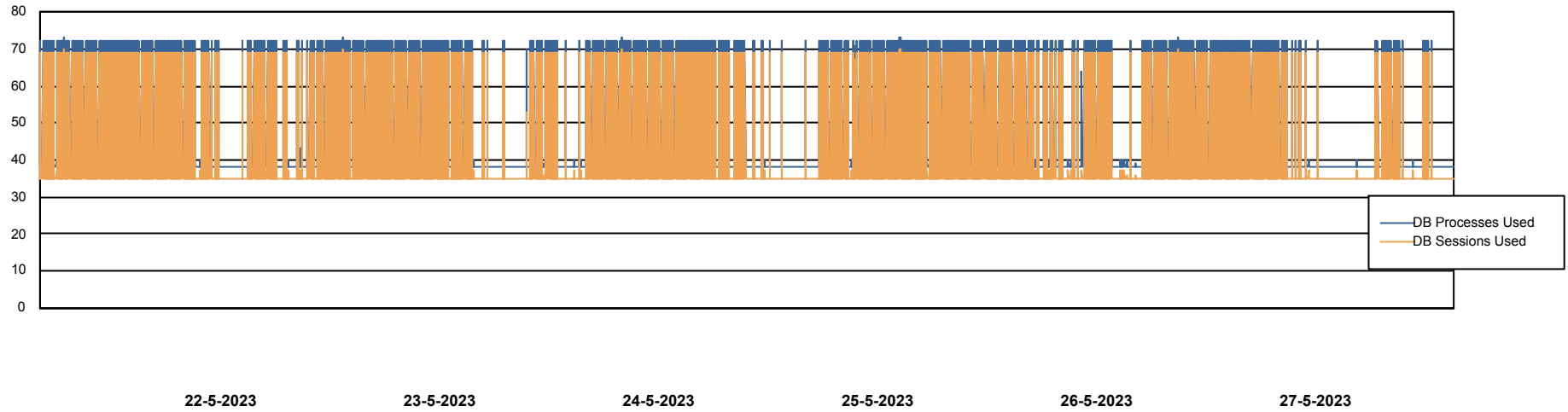
Weekly SLA Customer Report

Customer NIX_Production
Database ID 51



Database Performance NIXDB_Standby

DB Processes Max 300



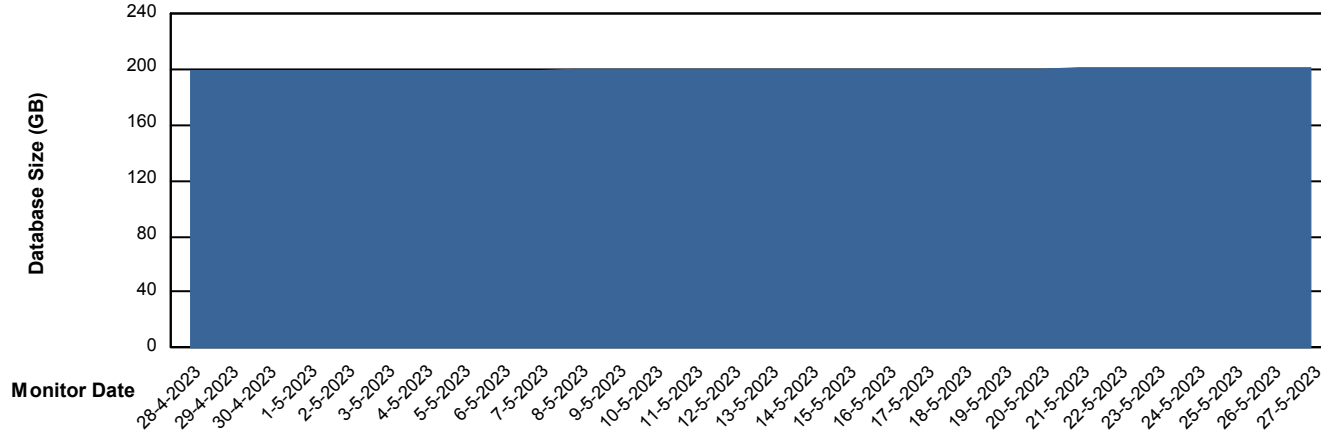
Weekly SLA Customer Report

Customer NIX_Production
Database ID 51



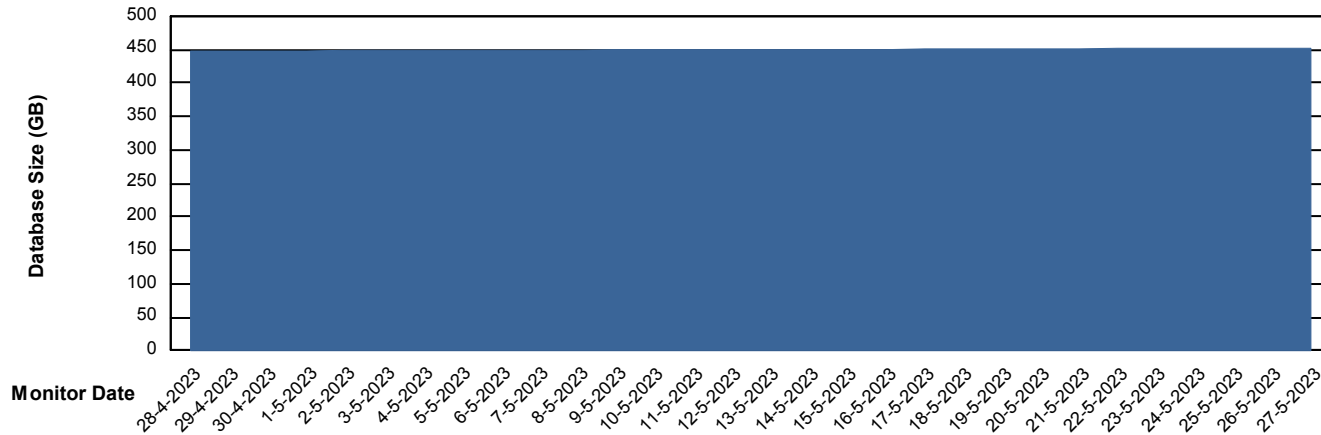
DATABASE SIZE NIXDB_BI

Database growth over last month



DATABASE SIZE NIXDB_Production

Database growth over last month



Weekly SLA Customer Report

Customer NIX_Production
 Database ID 51



Database Tablespace NIXDB_BI

Date	Tablespace Name	Filesize (Gb)	Usedsize (Gb)	Percentage free
27-5-2023	ABSDATA	99	82	17
	INDX	140	116	17
26-5-2023	ABSDATA	99	82	17
	INDX	140	116	17
25-5-2023	ABSDATA	99	82	17
	INDX	140	116	17
24-5-2023	ABSDATA	99	82	17
	INDX	140	116	17
23-5-2023	ABSDATA	99	82	17
	INDX	140	116	17
22-5-2023	ABSDATA	99	82	17
	INDX	140	116	17
21-5-2023	ABSDATA	99	82	17
	INDX	140	116	17

Weekly SLA Customer Report

Customer NIX_Production
 Database ID 51



Database Tablespace NIXDB_Production

Date	Tablespace Name	Filesize (Gb)	Usedsize (Gb)	Percentage free
27-5-2023	ABSDATA	221	185	16
	INDX	293	243	17
26-5-2023	ABSDATA	221	185	16
	INDX	293	243	17
25-5-2023	ABSDATA	221	185	16
	INDX	293	243	17
24-5-2023	ABSDATA	221	185	16
	INDX	293	243	17
23-5-2023	ABSDATA	221	185	16
	INDX	293	243	17
22-5-2023	ABSDATA	221	185	16
	INDX	293	243	17
21-5-2023	ABSDATA	221	185	16
	INDX	293	242	17

BI Status and last ETL error for NIXDB_BI

	ma 22/5/2023	di 23/5/2023	wo 24/5/2023	do 25/5/2023	vr 26/5/2023	za 27/5/2023
ABS DataWarehouse ETL Health	OK	OK	OK	OK	OK	OK
ABS DWHStaging ETL Health	OK	OK	OK	OK	OK	OK

Weekly SLA Customer Report

Customer NIX_Production
Database ID 51



BI last ETL error for	NIXDB_BI
zo, 21-05-2023	None
vr, 26-05-2023	None
za, 27-05-2023	None
zo, 21-05-2023	None
ma, 22-05-2023	None
do, 25-05-2023	None
wo, 24-05-2023	None
do, 25-05-2023	None
di, 23-05-2023	None
ma, 22-05-2023	None
vr, 26-05-2023	None
di, 23-05-2023	None
za, 27-05-2023	None
wo, 24-05-2023	None

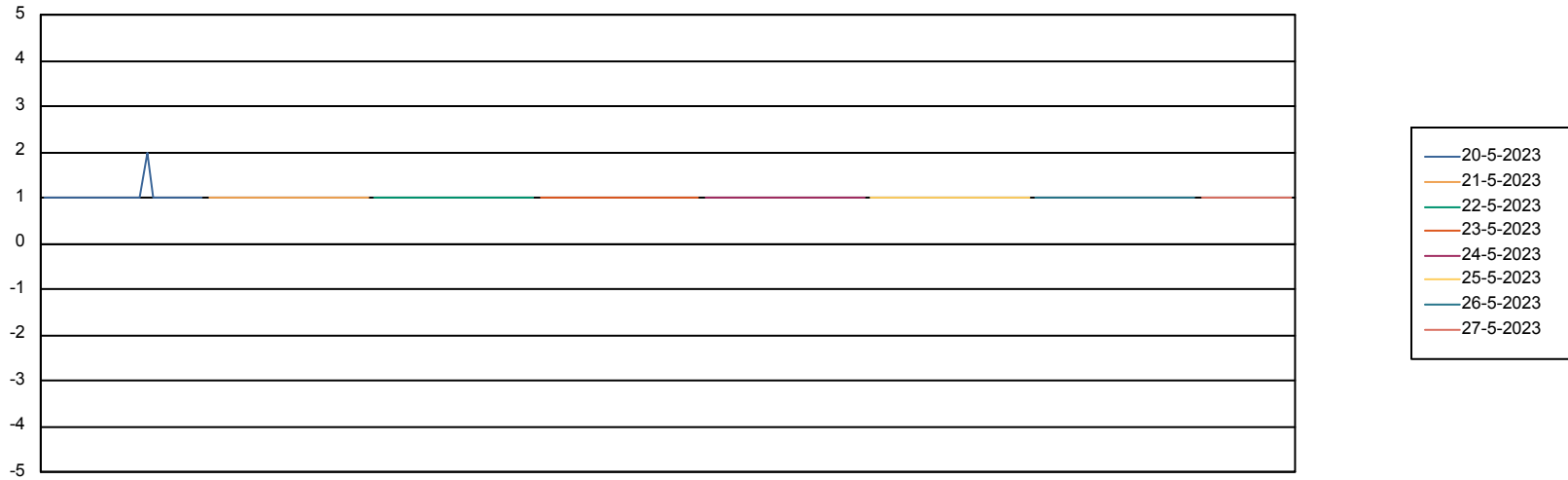
Weekly SLA Customer Report

Customer NIX_Production
Database ID 51



Standby Database Health NIX_Production

Recovery lag for last 7 days



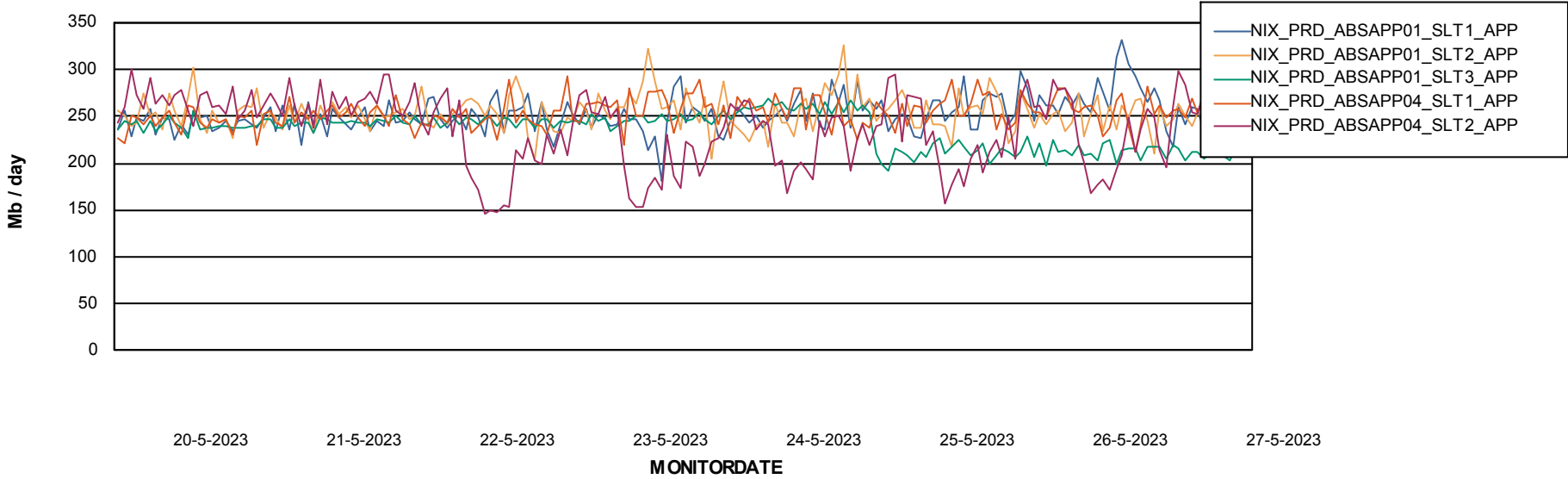
Weekly SLA Customer Report

Customer NIX_Production
Database ID 51

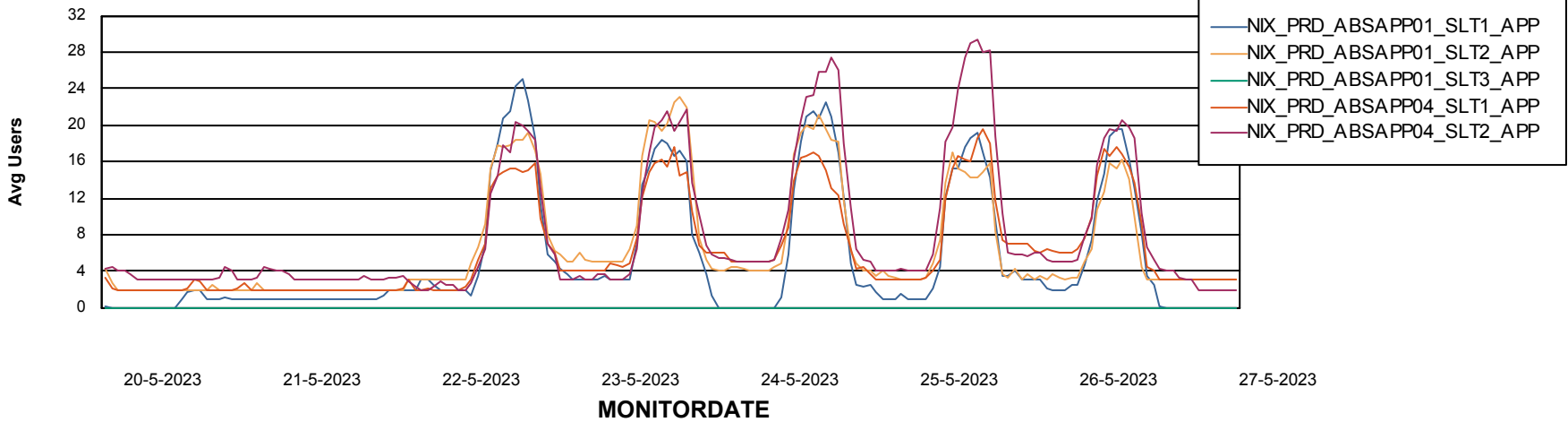


ABSSolute Application Server Services

Avg memory used per ABS Server Service



Avg users per day per ABS server



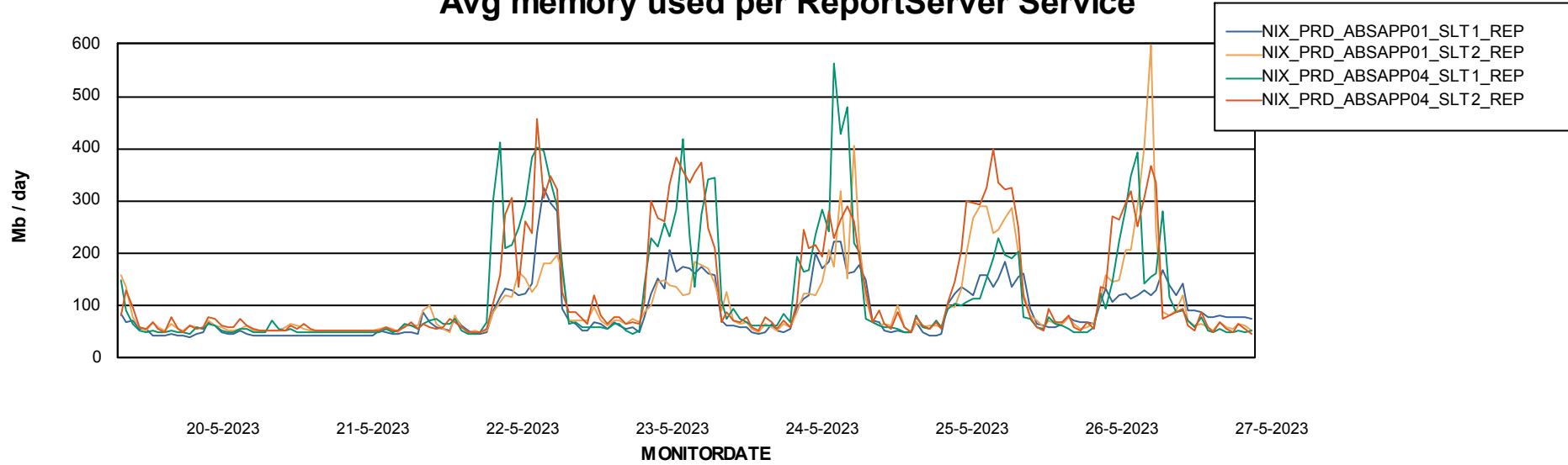
Weekly SLA Customer Report

Customer NIX_Production
Database ID 51



ABSSolute Application ReportServer Services

Avg memory used per ReportServer Service



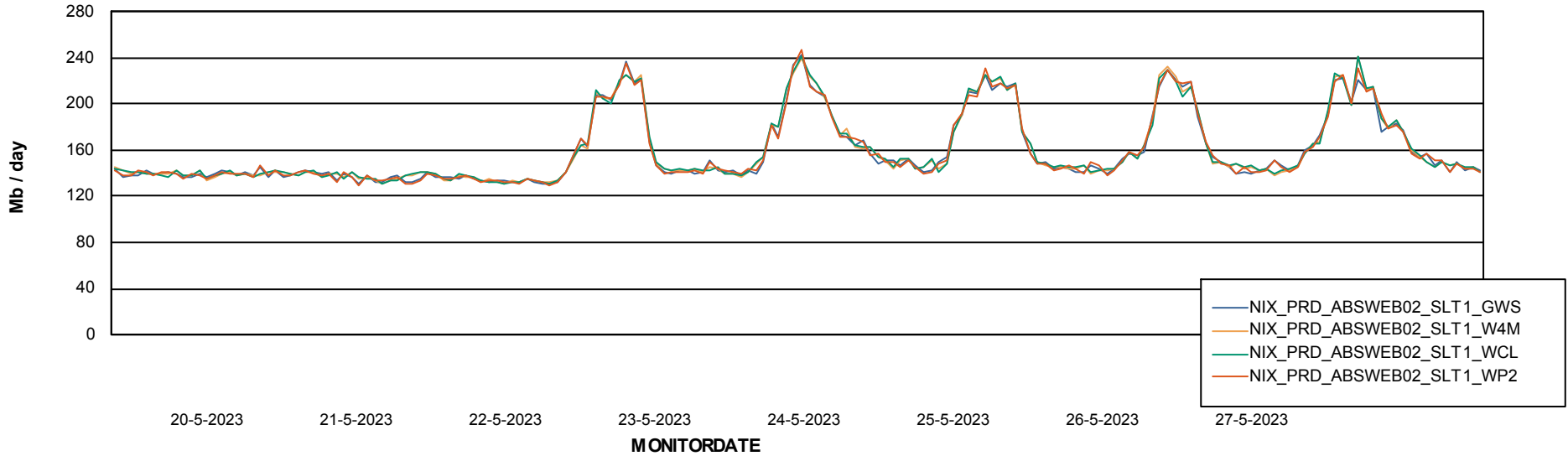
Weekly SLA Customer Report

Customer NIX_Production
Database ID 51



ABSSolute Web Component Services

Avg memory used per ABS Web component



Weekly SLA Customer Report

Customer NIX_Production
Database ID 51



Disaster per ABS component

