

# Weekly SLA Customer Report

Customer NIX\_Production  
 Database ID 51



Harddisk Usage NIX\_PRD\_ABSAPP01

	Free disk space on C: (%)	Total disk space on C: (Gb)	Used disk space on C: (Gb)	Free disk space on E: (%)	Total disk space on E: (Gb)	Used disk space on E: (Gb)
6-5-2023	65	207	72	100	98	0
5-5-2023	65	207	72	100	98	0
4-5-2023	65	207	72	100	98	0
3-5-2023	65	207	72	100	98	0
2-5-2023	65	207	71	100	98	0
1-5-2023	66	207	71	100	98	0
30-4-2023	66	207	70	100	98	0

Harddisk Usage NIX\_PRD\_ABSAPP04

	Free disk space on C: (%)	Total disk space on C: (Gb)	Used disk space on C: (Gb)
6-5-2023	23	127	97
5-5-2023	23	127	97
4-5-2023	24	127	97
3-5-2023	24	127	97
2-5-2023	22	127	98
1-5-2023	23	127	97
30-4-2023	22	127	99

# Weekly SLA Customer Report

Customer NIX\_Production  
Database ID 51



## Harddisk Usage NIX\_PRD\_ABSWEB02

	Free disk space on C: (%)	Total disk space on C: (Gb)	Used disk space on C: (Gb)
6-5-2023	86	300	43
5-5-2023	86	300	43
4-5-2023	86	300	43
3-5-2023	86	300	43
2-5-2023	86	300	43
1-5-2023	86	300	43
30-4-2023	86	300	43

## Harddisk Usage NIX\_PRD\_BISRV

	Free disk space on C: (%)	Total disk space on C: (Gb)	Used disk space on C: (Gb)
6-5-2023	46	836	455
5-5-2023	46	836	451
4-5-2023	46	836	451
3-5-2023	46	836	452
2-5-2023	46	836	452
1-5-2023	46	836	453
30-4-2023	46	836	453

# Weekly SLA Customer Report

Customer NIX\_Production  
 Database ID 51



Harddisk Usage NIX\_PRD\_ORCDB1

	Free disk space on C: (%)	Total disk space on C: (Gb)	Used disk space on C: (Gb)	Free disk space on D: (%)	Total disk space on D: (Gb)	Used disk space on D: (Gb)	Free disk space on E: (%)	Total disk space on E: (Gb)	Used disk space on E: (Gb)	Free disk space on F: (%)
6-5-2023	69	554	170	47	586	309	52	605	289	39
5-5-2023	69	554	170	47	586	309	52	605	289	38
4-5-2023	69	554	170	47	586	309	52	605	289	38
3-5-2023	69	554	170	47	586	309	52	605	289	38
2-5-2023	62	554	210	47	586	309	52	605	289	38
1-5-2023	57	554	240	47	586	309	52	605	289	39
30-4-2023	69	554	170	47	586	309	52	605	289	39

Harddisk Usage NIX\_PRD\_ORCDB2

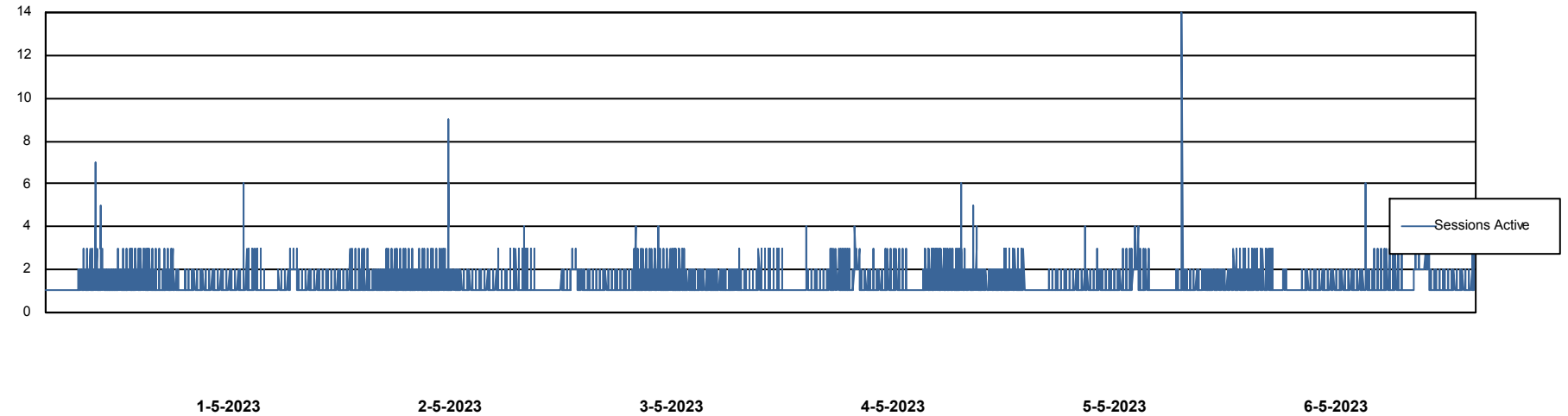
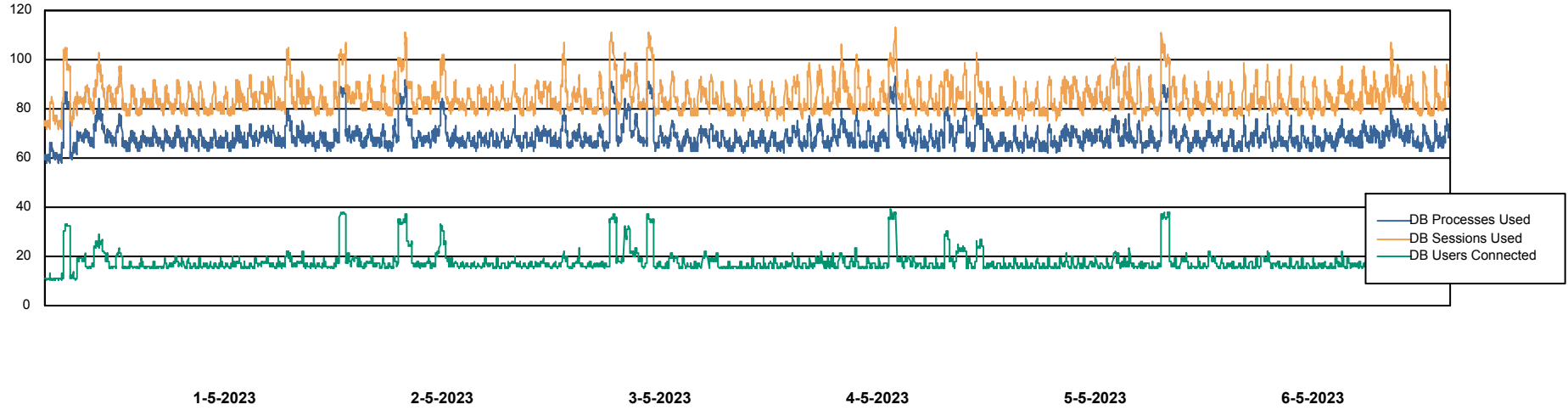
	Free disk space on C: (%)	Total disk space on C: (Gb)	Used disk space on C: (Gb)	Free disk space on D: (%)	Total disk space on D: (Gb)	Used disk space on D: (Gb)	Free disk space on E: (%)	Total disk space on E: (Gb)	Used disk space on E: (Gb)	Free disk space on F: (%)
6-5-2023	88	574	66	43	488	280	58	684	289	87
5-5-2023	89	574	65	43	488	280	58	684	288	88
4-5-2023	89	574	65	43	488	280	58	684	288	88
3-5-2023	89	574	65	43	488	280	58	684	288	87
2-5-2023	89	574	66	43	488	280	58	684	289	88
1-5-2023	88	574	66	43	488	280	58	684	288	88
30-4-2023	89	574	66	43	488	280	58	684	288	88

# Weekly SLA Customer Report

Customer NIX\_Production  
Database ID 51



## Database Performance NIXDB\_BI

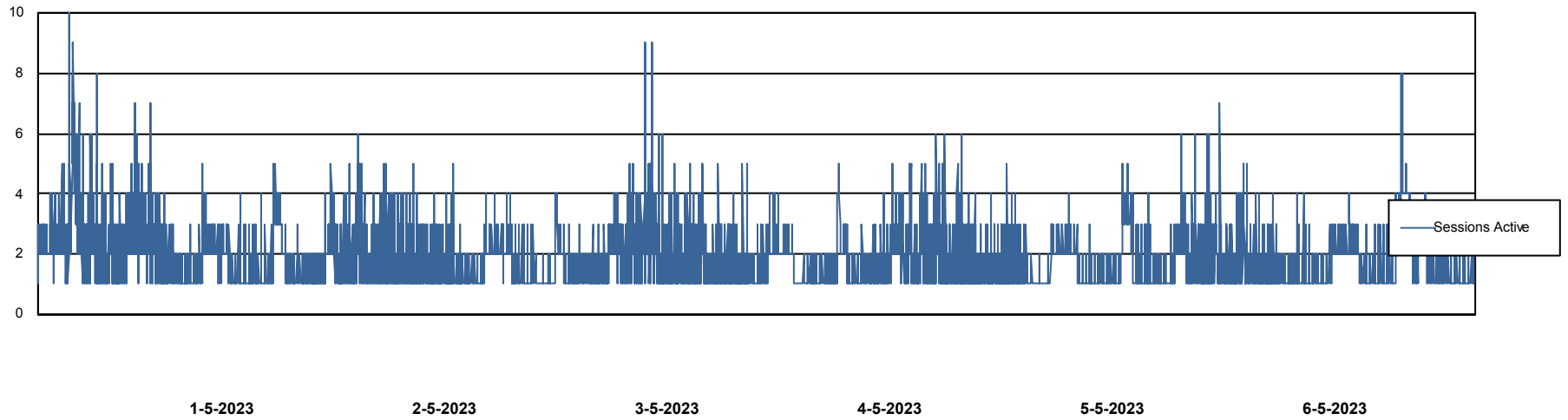
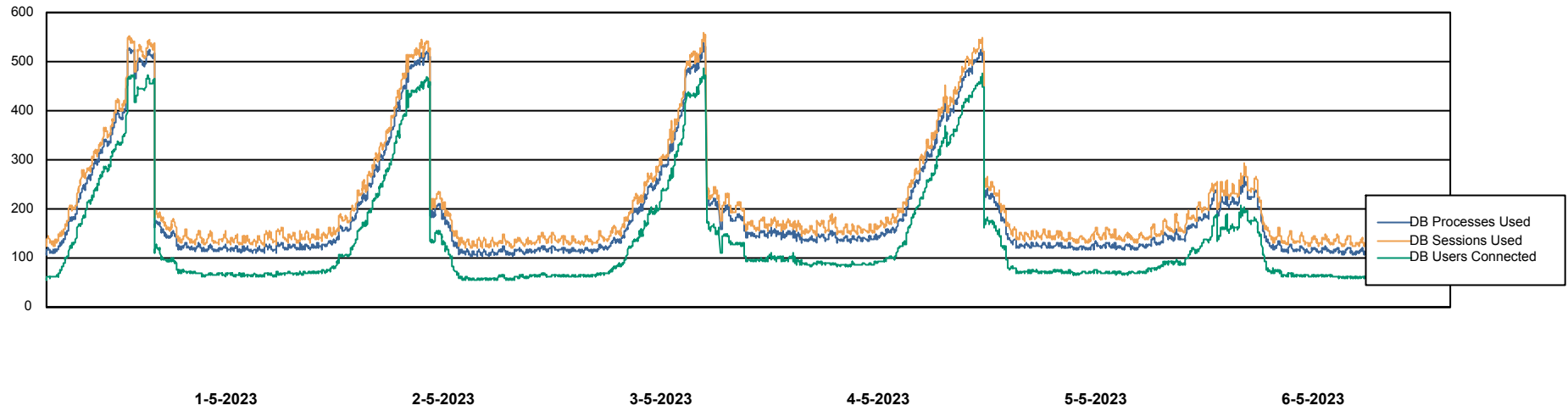


# Weekly SLA Customer Report

Customer NIX\_Production  
Database ID 51



## Database Performance NIXDB\_Production



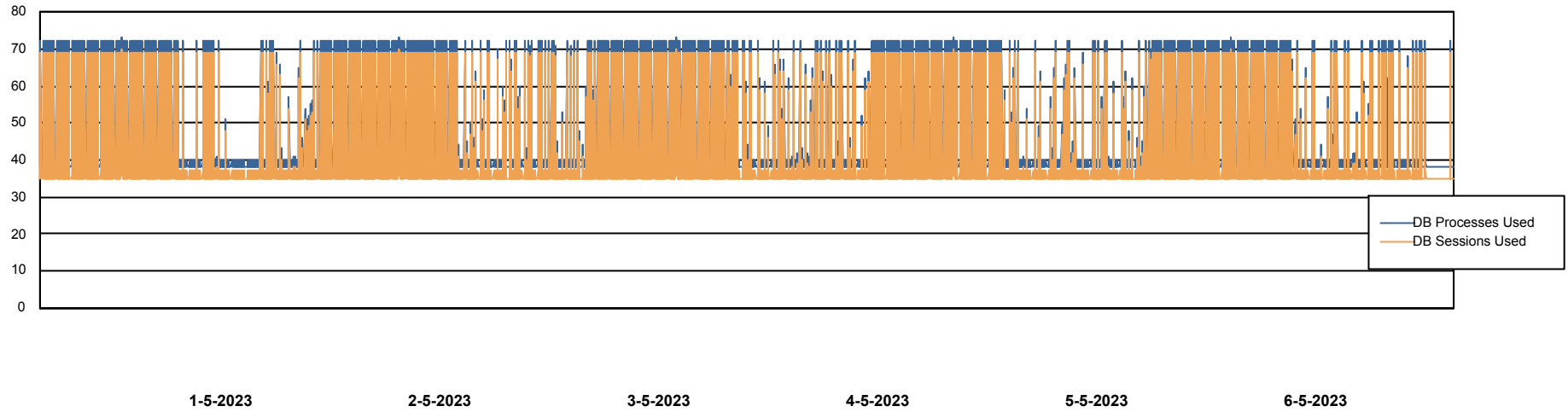
# Weekly SLA Customer Report

Customer NIX\_Production  
Database ID 51



Database Performance NIXDB\_Standby

DB Processes Max 300



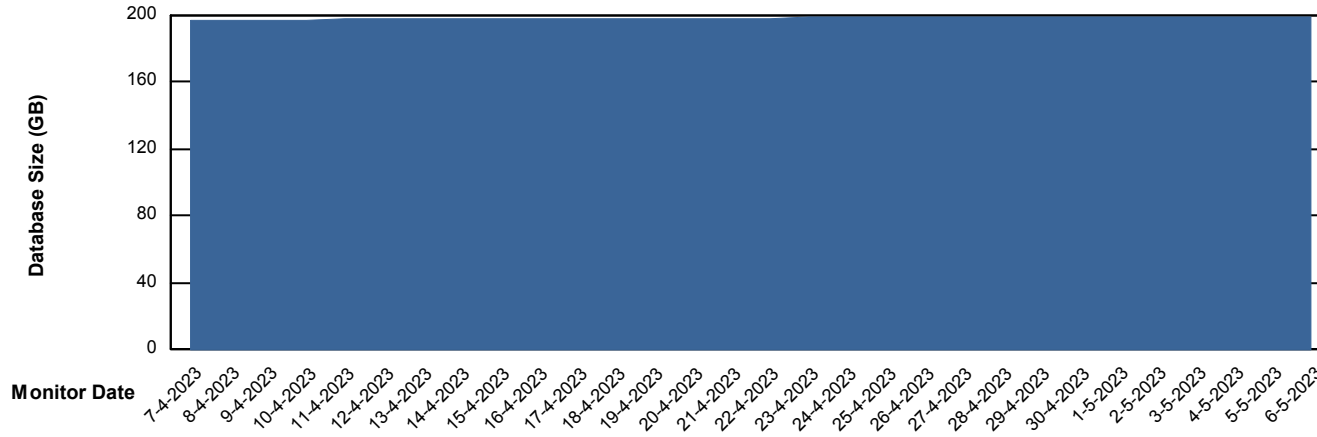
# Weekly SLA Customer Report

Customer NIX\_Production  
Database ID 51



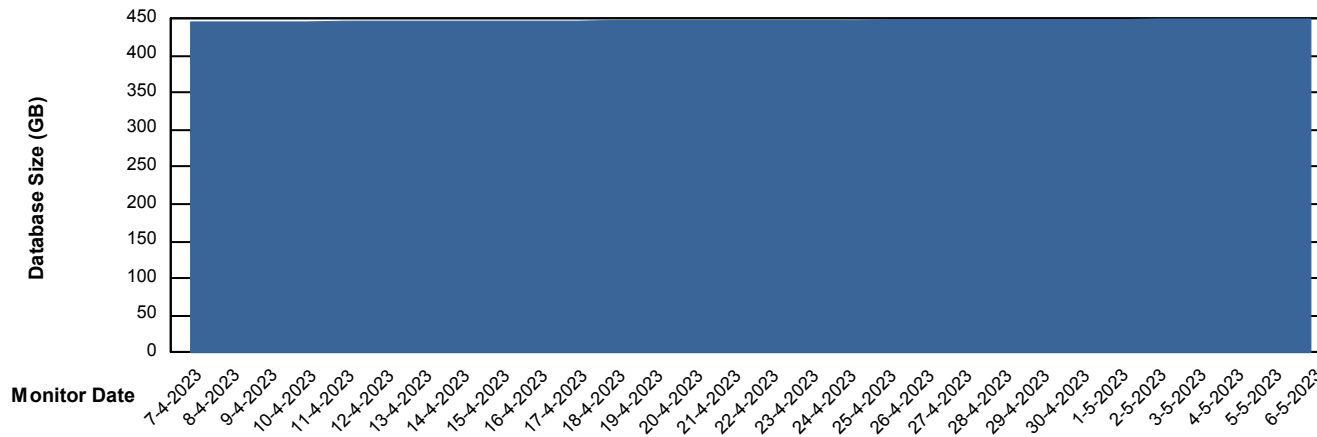
DATABASE SIZE NIXDB\_BI

### Database growth over last month



DATABASE SIZE NIXDB\_Production

### Database growth over last month



# Weekly SLA Customer Report

Customer NIX\_Production  
 Database ID 51



Database Tablespace NIXDB\_BI

Date	Tablespace Name	Filesize (Gb)	Usedsize (Gb)	Percentage free
6-5-2023	ABSDATA	99	82	17
	INDX	140	115	18
5-5-2023	ABSDATA	99	82	17
	INDX	140	115	18
4-5-2023	ABSDATA	99	82	17
	INDX	140	115	18
3-5-2023	ABSDATA	99	82	17
	INDX	140	115	18
2-5-2023	ABSDATA	99	82	17
	INDX	140	115	18
1-5-2023	ABSDATA	99	82	17
	INDX	140	115	18
30-4-2023	ABSDATA	99	82	17
	INDX	140	115	18

# Weekly SLA Customer Report

Customer NIX\_Production  
 Database ID 51



Database Tablespace NIXDB\_Production

Date	Tablespace Name	Filesize (Gb)	Usedsize (Gb)	Percentage free
6-5-2023	ABSDATA	221	184	17
	INDX	288	241	16
5-5-2023	ABSDATA	221	184	17
	INDX	288	241	16
4-5-2023	ABSDATA	221	184	17
	INDX	288	241	16
3-5-2023	ABSDATA	221	184	17
	INDX	288	241	16
2-5-2023	ABSDATA	221	184	17
	INDX	288	240	17
1-5-2023	ABSDATA	221	184	17
	INDX	288	240	17
30-4-2023	ABSDATA	221	184	17
	INDX	288	240	17

BI Status and last ETL error for NIXDB\_BI

	ma 1/5/2023	di 2/5/2023	wo 3/5/2023	do 4/5/2023	vr 5/5/2023	za 6/5/2023
<b>ABS DataWarehouse ETL Health</b>	OK	OK	OK	OK	OK	OK
<b>ABS DWHStaging ETL Health</b>	OK	OK	OK	OK	OK	OK

# Weekly SLA Customer Report

Customer NIX\_Production  
Database ID 51



BI last ETL error for	NIXDB_BI
vr, 5-05-2023	None
za, 6-05-2023	None
wo, 3-05-2023	None
za, 6-05-2023	None
di, 2-05-2023	None
ma, 1-05-2023	None
wo, 3-05-2023	None
zo, 30-04-2023	None
zo, 30-04-2023	None
ma, 1-05-2023	None
di, 2-05-2023	None
do, 4-05-2023	None
vr, 5-05-2023	None
do, 4-05-2023	None

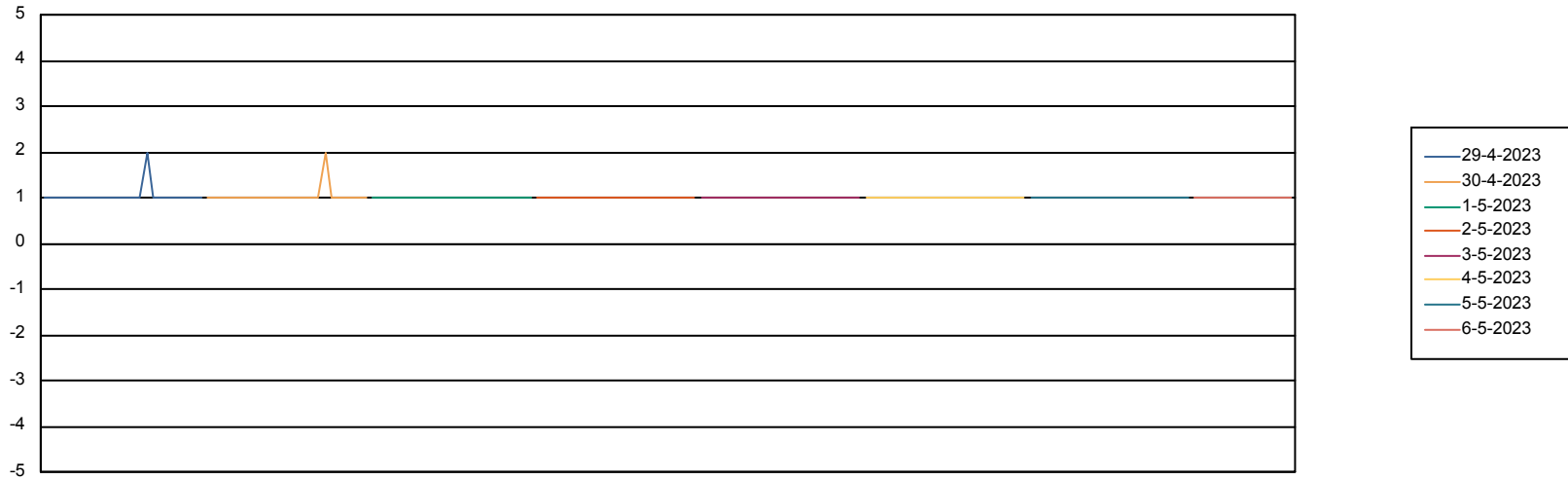
# Weekly SLA Customer Report

Customer NIX\_Production  
Database ID 51



Standby Database Health NIX\_Production

## Recovery lag for last 7 days



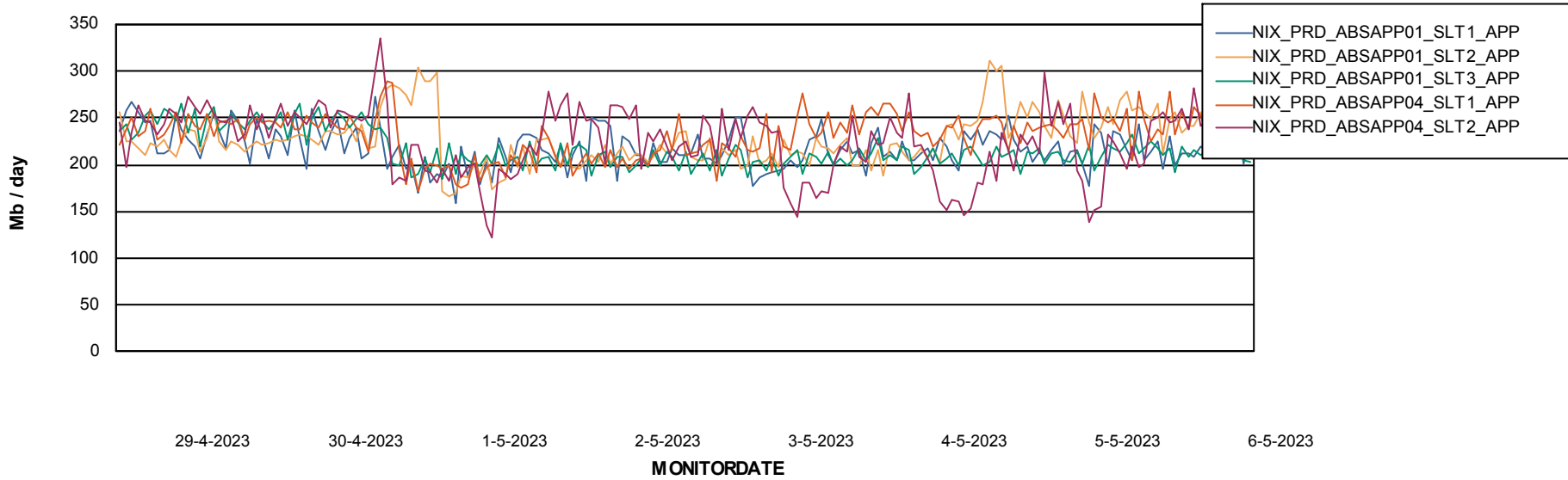
# Weekly SLA Customer Report

Customer NIX\_Production  
Database ID 51

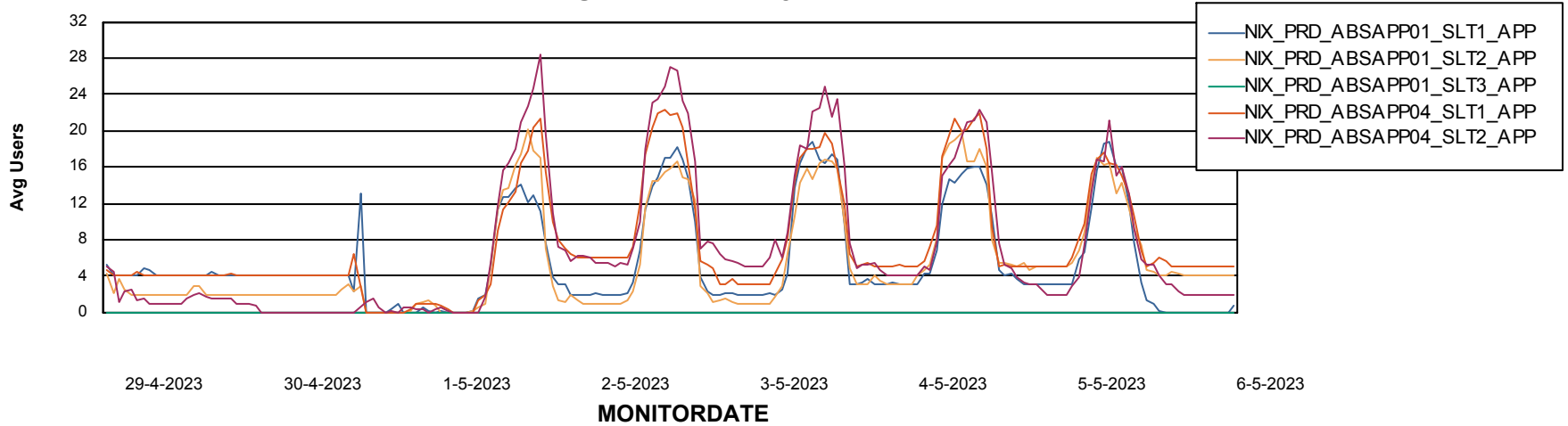


## ABSSolute Application Server Services

### Avg memory used per ABS Server Service



### Avg users per day per ABS server



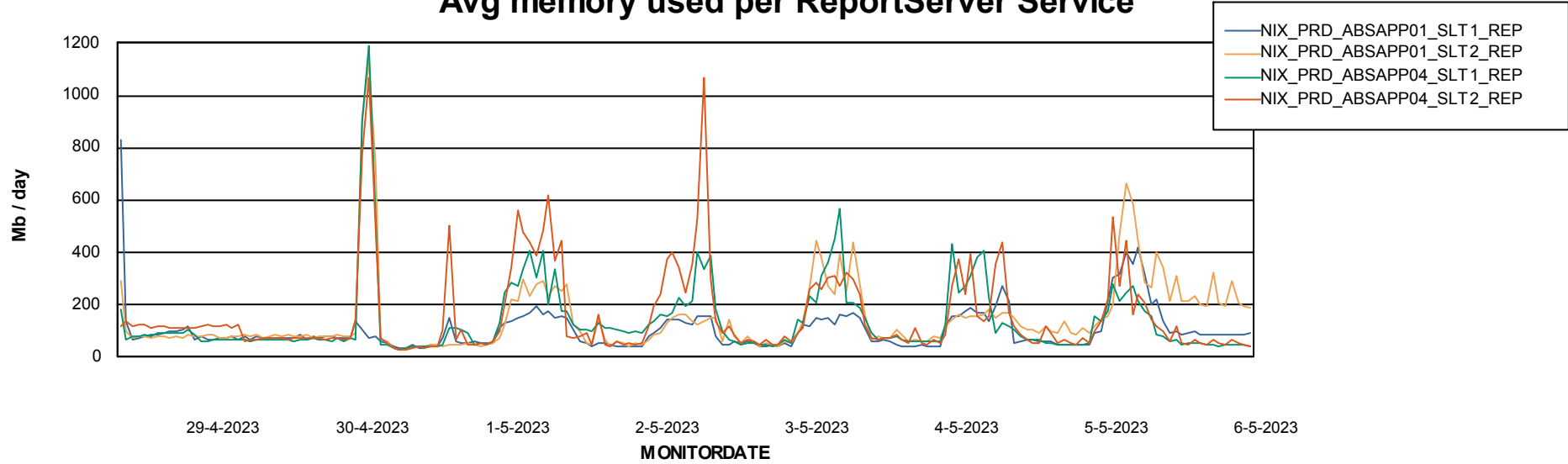
# Weekly SLA Customer Report

Customer NIX\_Production  
Database ID 51



## ABSSolute Application ReportServer Services

### Avg memory used per ReportServer Service



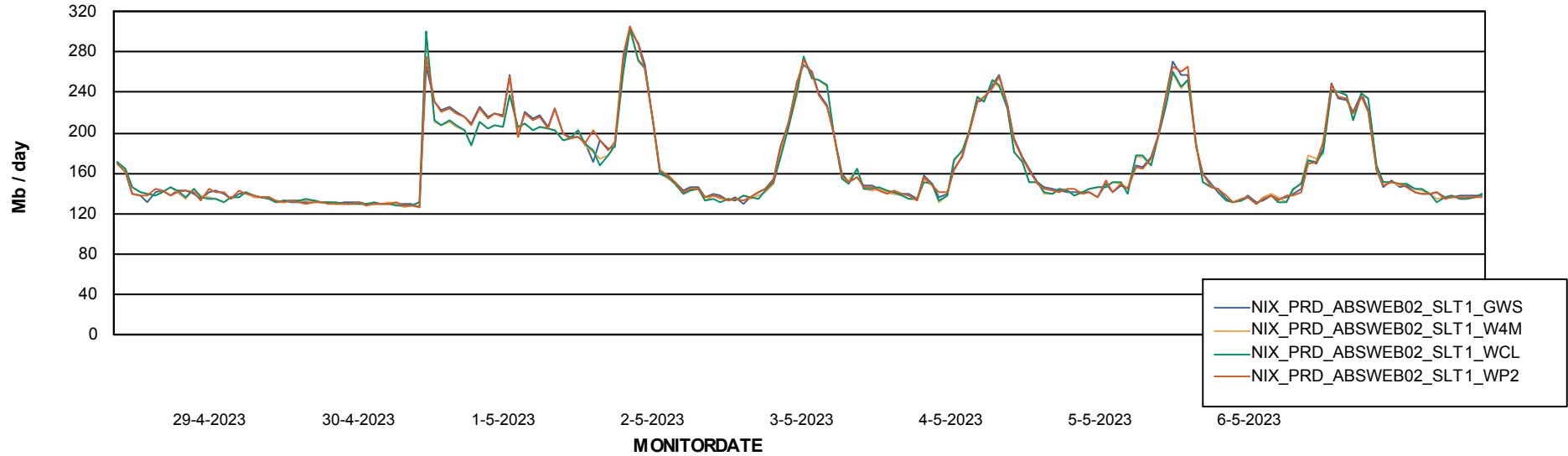
# Weekly SLA Customer Report

Customer NIX\_Production  
Database ID 51



## ABSSolute Web Component Services

### Avg memory used per ABS Web component



# Weekly SLA Customer Report

Customer NIX\_Production  
Database ID 51



### Disaster per ABS component

