

# Weekly SLA Customer Report

Customer AUJ Production  
Database ID 41



## Harddisk Usage AUJ Prod. ABSSolute DB server: PABSDB1

	Free disk space on / (%)	Total disk space on / (Gb)	Used disk space on / (Gb)	Free disk space on /bk (%)	Total disk space on /bk (Gb)	Used disk space on /bk (Gb)	Free disk space on /u02 (%)	Total disk space on /u02 (Gb)	Used disk space on /u02 (Gb)
11-3-2023	87	200	25	63	1,200	450	24	1,799	1,372
10-3-2023	87	200	25	59	1,200	486	24	1,799	1,372
9-3-2023	87	200	25	60	1,200	485	24	1,799	1,372
8-3-2023	87	200	25	60	1,200	485	24	1,799	1,372
7-3-2023	87	200	25	60	1,200	482	24	1,799	1,372
6-3-2023	87	200	25	60	1,200	479	24	1,799	1,372
5-3-2023	87	200	25	60	1,200	477	24	1,799	1,372

## Harddisk Usage AUJ Prod. BI DB server: PABSBI1

	Free disk space on / (%)	Total disk space on / (Gb)	Used disk space on / (Gb)	Free disk space on /u02 (%)	Total disk space on /u02 (Gb)	Used disk space on /u02 (Gb)
11-3-2023	88	200	25	69	1,000	306
10-3-2023	88	200	25	70	1,000	302
9-3-2023	88	200	25	70	1,000	302
8-3-2023	88	200	25	70	1,000	302
7-3-2023	88	200	25	70	1,000	302
6-3-2023	88	200	25	70	1,000	302
5-3-2023	88	200	25	69	1,000	305

# Weekly SLA Customer Report

Customer AUJ Production  
Database ID 41



## Harddisk Usage AUJ\_PRD\_ABS\_APP1

	Free disk space on / (%)	Total disk space on / (Gb)	Used disk space on / (Gb)	Free disk space on /abs (%)	Total disk space on /abs (Gb)	Used disk space on /abs (Gb)
11-3-2023	70	40	12	72	85	24
10-3-2023	70	40	12	72	85	24
9-3-2023	70	40	12	73	85	23
8-3-2023	70	40	12	74	85	22
7-3-2023	70	40	12	75	85	22
6-3-2023	70	40	12	75	85	21
5-3-2023	70	40	12	76	85	21

## Harddisk Usage AUJ\_PRD\_ABS\_APP2

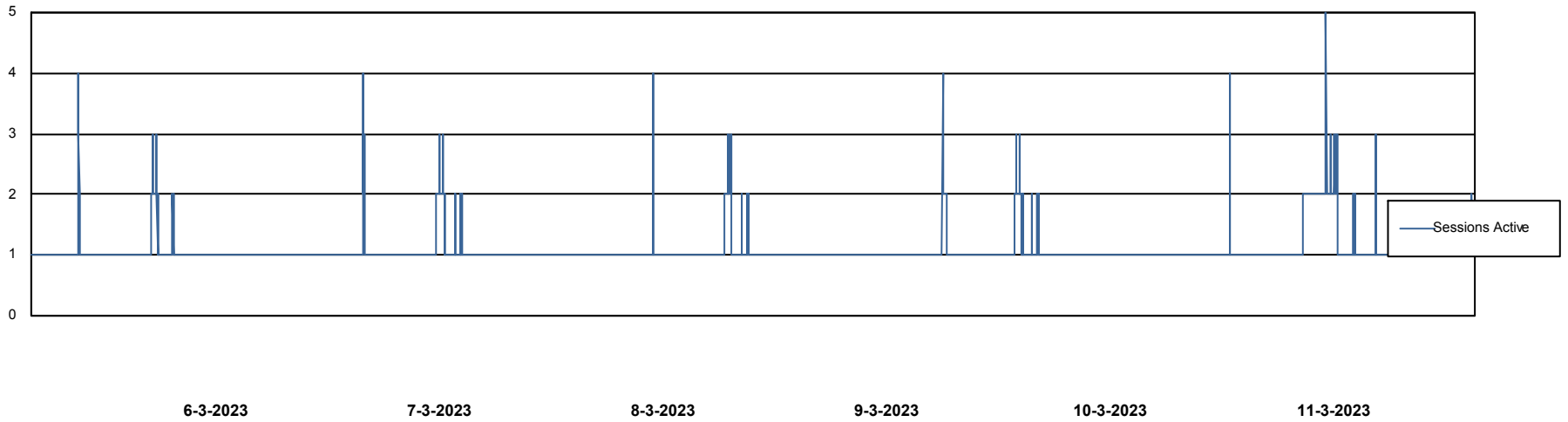
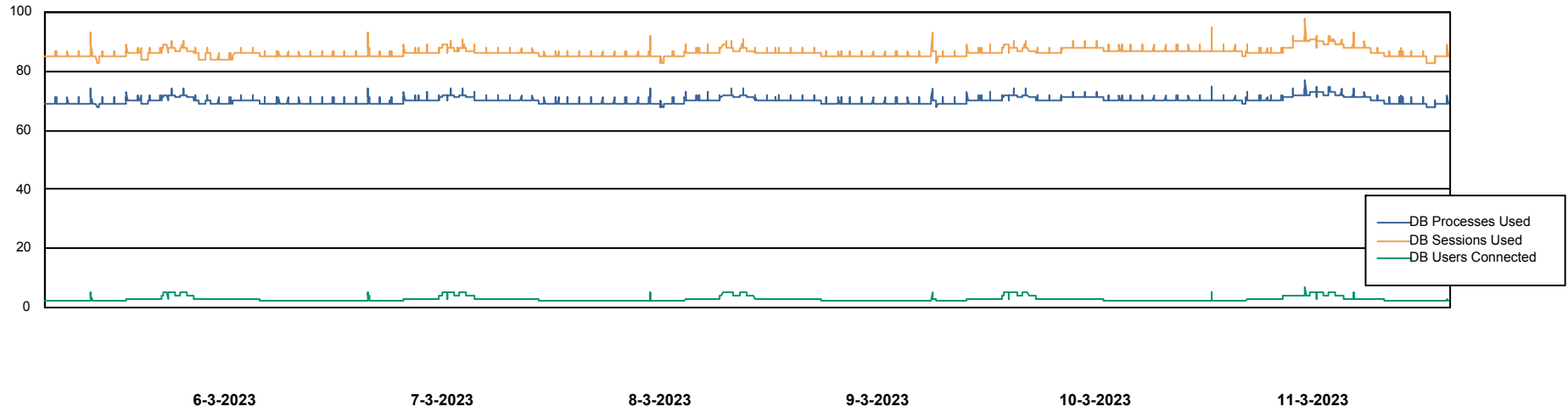
	Free disk space on / (%)	Total disk space on / (Gb)	Used disk space on / (Gb)	Free disk space on /abs (%)	Total disk space on /abs (Gb)	Used disk space on /abs (Gb)
11-3-2023	84	40	6	74	85	22
10-3-2023	84	40	6	74	85	22
9-3-2023	84	40	6	74	85	22
8-3-2023	84	40	6	75	85	21
7-3-2023	84	40	6	75	85	21
6-3-2023	84	40	6	75	85	21
5-3-2023	84	40	6	76	85	21

# Weekly SLA Customer Report

Customer AUJ Production  
Database ID 41



## Database Performance AUJ Prod. BI DB (PABSBI1 server)

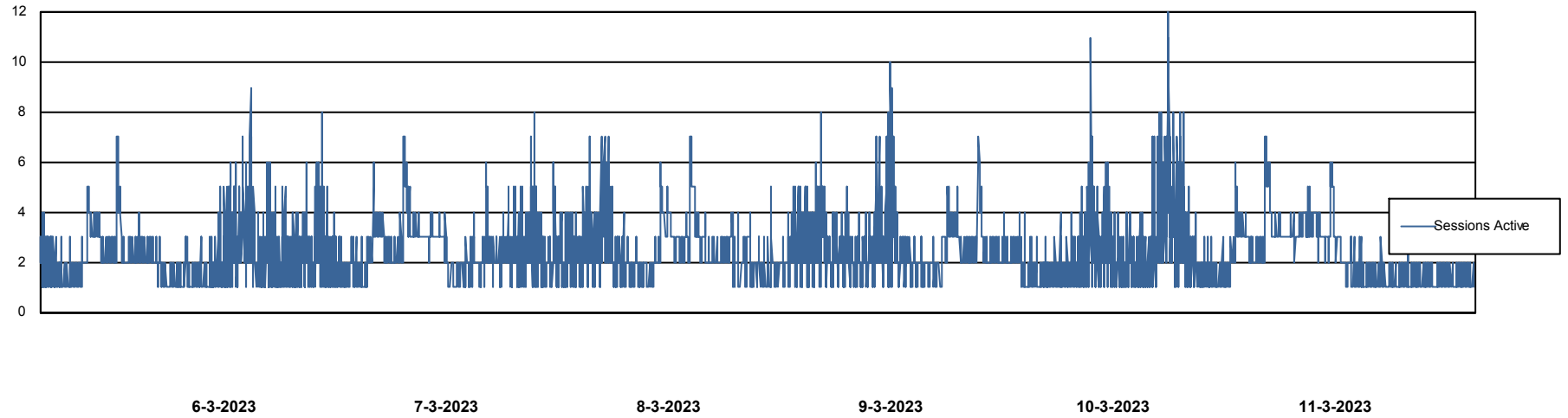
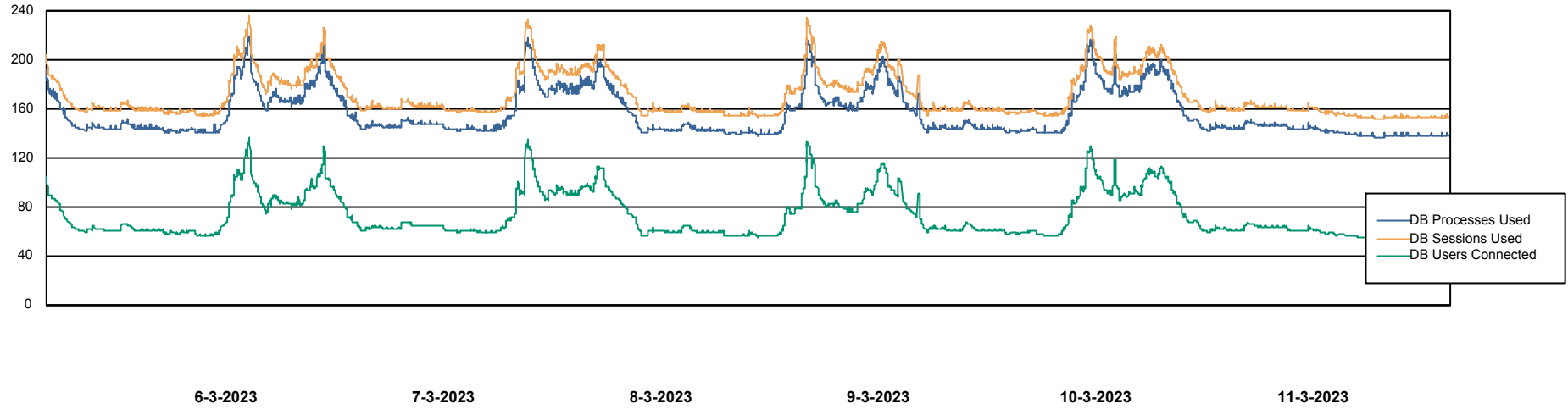


# Weekly SLA Customer Report

Customer AUJ Production  
Database ID 41



## Database Performance AUJ\_DB1\_Primary



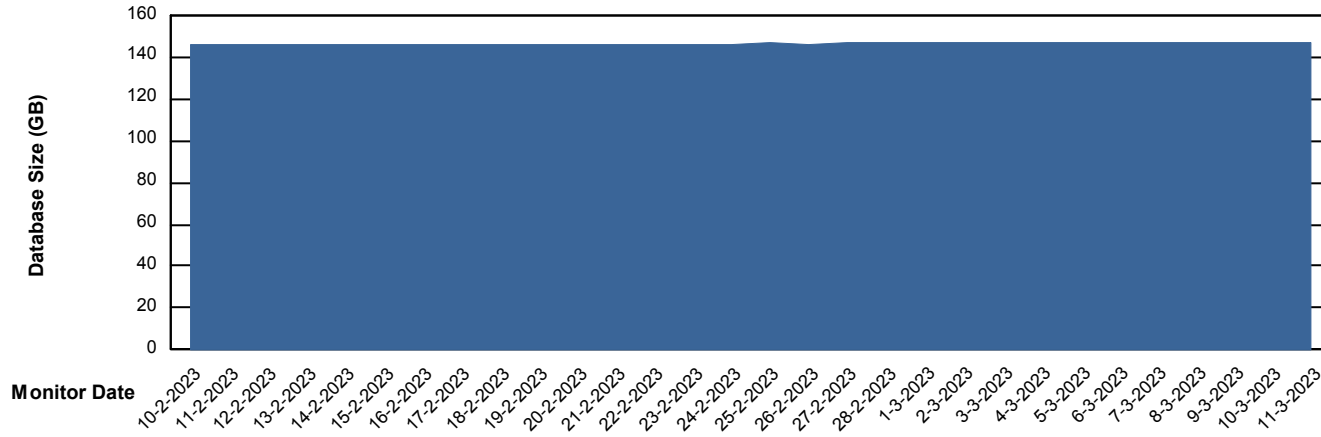
# Weekly SLA Customer Report

Customer AUJ Production  
Database ID 41



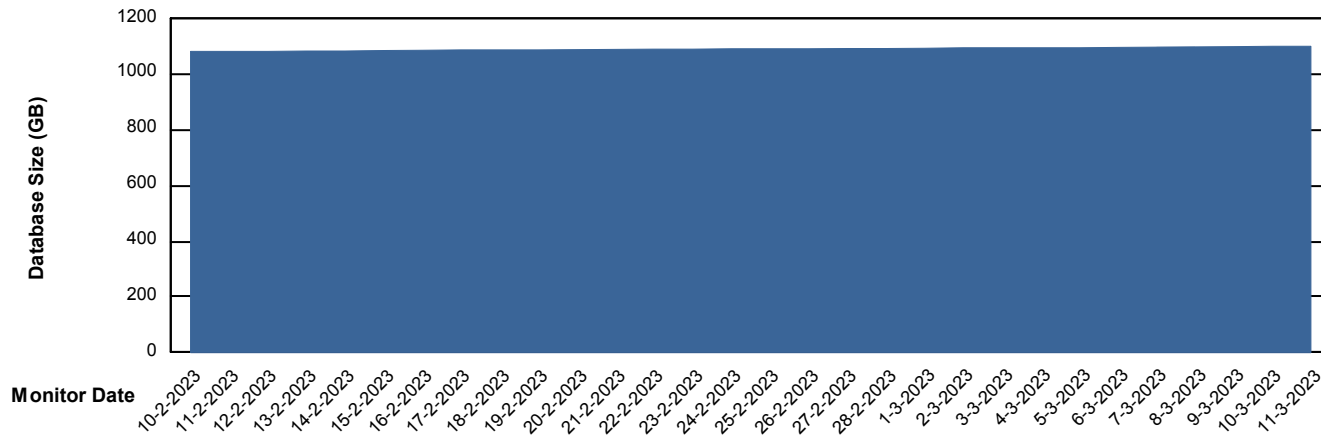
DATABASE SIZE AUJ Prod. BI DB (PABSBI1 server)

### Database growth over last month



DATABASE SIZE AUJ\_DB1\_Primary

### Database growth over last month



# Weekly SLA Customer Report

Customer AUJ Production  
Database ID 41



Database Tablespace AUJ Prod. BI DB (PABSBI1 server)

Date	Tablespace Name	Filesize (Gb)	Usedsize (Gb)	Percentage free
11-3-2023	ABSDATA	144	121	16
	INDX	29	24	17
10-3-2023	ABSDATA	144	121	16
	INDX	29	24	17
9-3-2023	ABSDATA	144	121	16
	INDX	29	24	17
8-3-2023	ABSDATA	144	121	16
	INDX	29	24	17
7-3-2023	ABSDATA	144	120	16
	INDX	29	24	17
6-3-2023	ABSDATA	144	120	16
	INDX	29	24	18
5-3-2023	ABSDATA	144	120	16
	INDX	29	24	18

# Weekly SLA Customer Report

Customer AUJ Production  
 Database ID 41



Database Tablespace AUJ\_DB1\_Primary

Date	Tablespace Name	Filesize (Gb)	Usedsize (Gb)	Percentage free
11-3-2023	ABSDATA	607	511	16
	INDX	696	580	17
10-3-2023	ABSDATA	607	511	16
	INDX	696	580	17
9-3-2023	ABSDATA	607	510	16
	INDX	696	580	17
8-3-2023	ABSDATA	607	510	16
	INDX	696	579	17
7-3-2023	ABSDATA	607	509	16
	INDX	696	579	17
6-3-2023	ABSDATA	607	509	16
	INDX	696	579	17
5-3-2023	ABSDATA	607	509	16
	INDX	696	578	17

BI Status and last ETL error for AUJ Prod. BI DB (PABSBI1 server)

	ma 6/3/2023	di 7/3/2023	wo 8/3/2023	do 9/3/2023	vr 10/3/2023	za 11/3/2023
<b>ABS DataWarehouse ETL Health</b>	OK	OK	OK	OK	OK	OK
<b>ABS DWHStaging ETL Health</b>	OK	OK	OK	OK	OK	OK

# Weekly SLA Customer Report

Customer AUJ Production  
Database ID 41



BI last ETL error for	AUJ Prod. BI DB (PABSBI1 server)
wo, 8-03-2023	None
vr, 10-03-2023	None
zo, 5-03-2023	None
ma, 6-03-2023	None
di, 7-03-2023	None
do, 9-03-2023	None
za, 11-03-2023	None
za, 11-03-2023	None
wo, 8-03-2023	None
do, 9-03-2023	None
ma, 6-03-2023	None
zo, 5-03-2023	None
vr, 10-03-2023	None
di, 7-03-2023	None

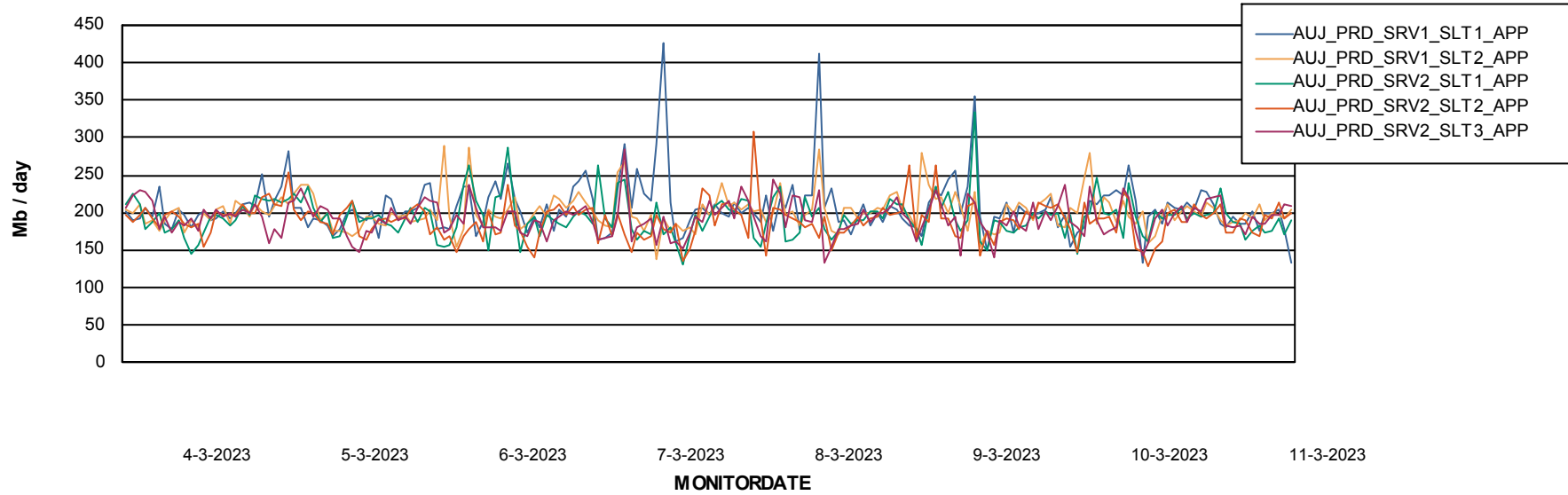
# Weekly SLA Customer Report

Customer AUJ Production  
Database ID 41

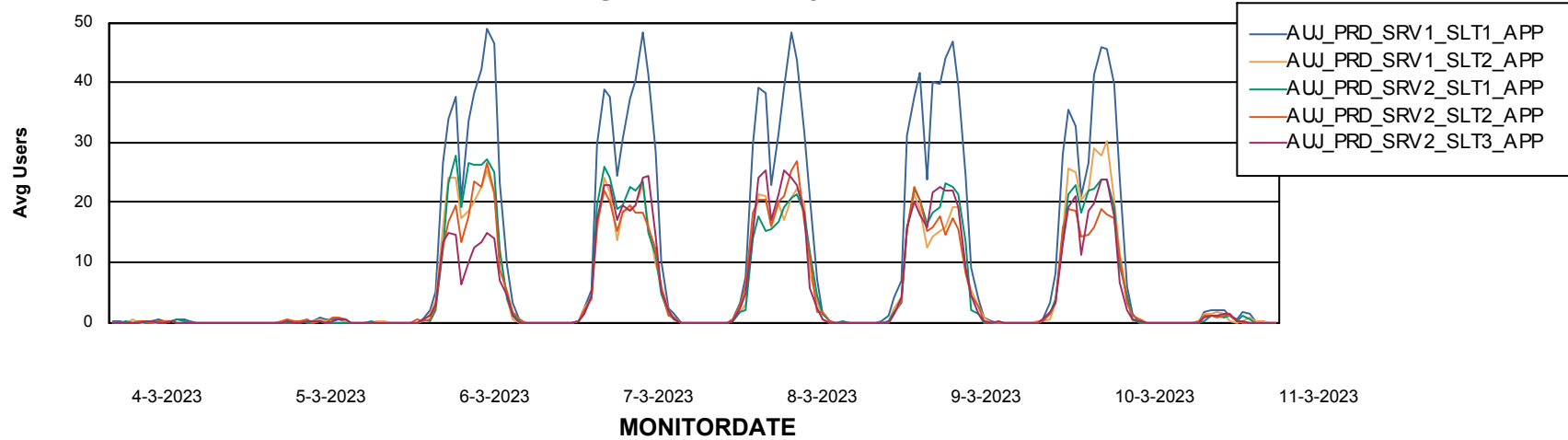


## ABSSolute Application Server Services

### Avg memory used per ABS Server Service



### Avg users per day per ABS server



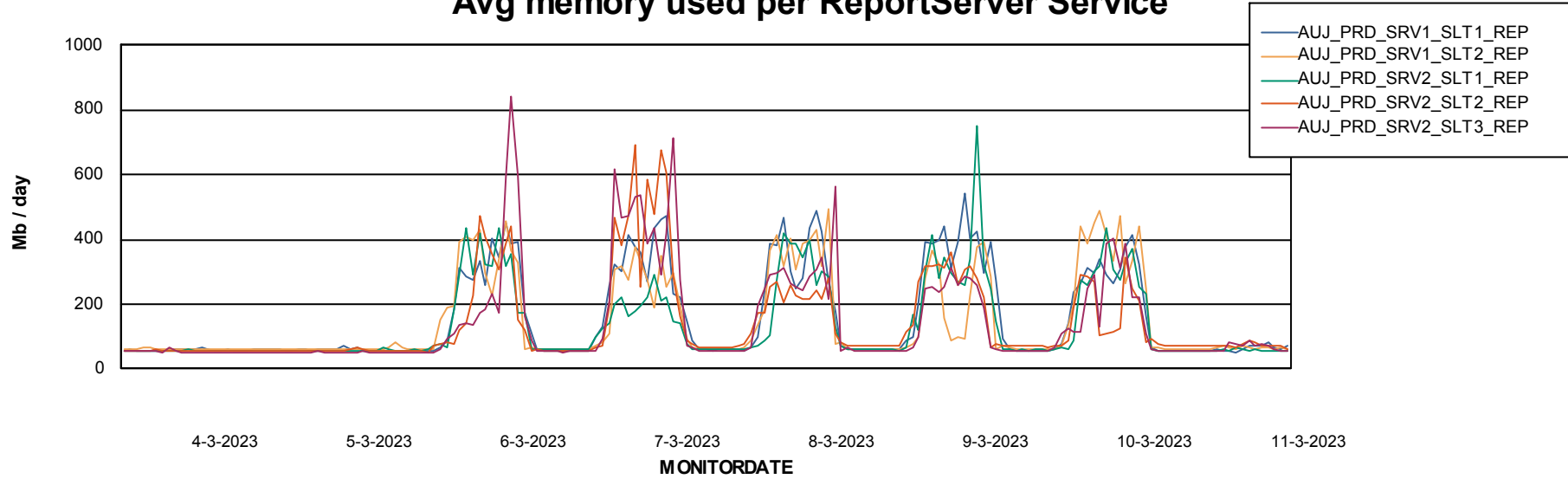
# Weekly SLA Customer Report

Customer AUJ Production  
Database ID 41



## ABSSolute Application ReportServer Services

### Avg memory used per ReportServer Service



### Disaster per ABS component

