

# Weekly SLA Customer Report

Customer NOA\_Production (24/7)  
 Database ID 116



Harddisk Usage NOA\_BI\_NOVOBI

	Free disk space on C: (%)	Total disk space on C: (Gb)	Used disk space on C: (Gb)	Free disk space on D: (%)	Total disk space on D: (Gb)	Used disk space on D: (Gb)	Free disk space on E: (%)	Total disk space on E: (Gb)	Used disk space on E: (Gb)	Free disk space on H: (%)
18-2-2023	39	97	59	61	488	189	81	314	59	0
17-2-2023	39	97	59	62	490	185	81	312	59	79
16-2-2023	39	97	60	61	488	189	81	314	59	100
15-2-2023	39	97	60	61	488	189	81	314	59	100
14-2-2023	38	97	60	61	488	189	81	314	59	100
13-2-2023	39	97	59	61	488	189	81	314	59	100
12-2-2023	40	97	59	61	488	189	81	314	59	100

Harddisk Usage NOA\_PRD\_NovoABS01

	Free disk space on C: (%)	Total disk space on C: (Gb)	Used disk space on C: (Gb)	Free disk space on F: (%)	Total disk space on F: (Gb)	Used disk space on F: (Gb)	Free disk space on G: (%)	Total disk space on G: (Gb)	Used disk space on G: (Gb)
18-2-2023	47	100	53	30	800	556	84	400	63
17-2-2023	47	100	53	31	800	554	76	400	96
16-2-2023	47	100	53	31	800	553	60	400	160
15-2-2023	47	100	53	31	800	553	50	400	200
14-2-2023	47	100	53	31	800	554	29	400	284
13-2-2023	47	100	53	31	800	553	29	400	285
12-2-2023	47	100	52	31	800	554	29	400	286

# Weekly SLA Customer Report

Customer NOA\_Production (24/7)  
 Database ID 116



Harddisk Usage NOA\_PRD\_NovoABS03

	Free disk space on C: (%)	Total disk space on C: (Gb)	Used disk space on C: (Gb)	Free disk space on F: (%)	Total disk space on F: (Gb)	Used disk space on F: (Gb)	Free disk space on G: (%)	Total disk space on G: (Gb)	Used disk space on G: (Gb)
18-2-2023	66	279	95	46	838	455	89	559	63
17-2-2023	66	279	95	46	838	455	83	559	96
16-2-2023	66	279	95	46	838	455	71	559	160
15-2-2023	66	279	95	46	838	455	64	559	201
14-2-2023	66	279	95	46	838	455	49	559	284
13-2-2023	66	279	95	46	838	455	49	559	285
12-2-2023	66	279	95	46	838	455	49	559	286

Harddisk Usage NOA\_PRD\_NovoApps01

	Free disk space on C: (%)	Total disk space on C: (Gb)	Used disk space on C: (Gb)
18-2-2023	53	100	46
17-2-2023	53	100	46
16-2-2023	53	100	46
15-2-2023	54	100	46
14-2-2023	53	100	46
13-2-2023	54	100	46
12-2-2023	54	100	46

# Weekly SLA Customer Report

Customer NOA\_Production (24/7)  
Database ID 116



## Harddisk Usage NOA\_PRD\_NovoApps02

	Free disk space on C: (%)	Total disk space on C: (Gb)	Used disk space on C: (Gb)
18-2-2023	65	100	35
17-2-2023	65	100	35
16-2-2023	65	100	35
15-2-2023	65	100	35
14-2-2023	65	100	35
13-2-2023	65	100	35
12-2-2023	65	100	35

## Harddisk Usage NOA\_PRD\_NovoLink

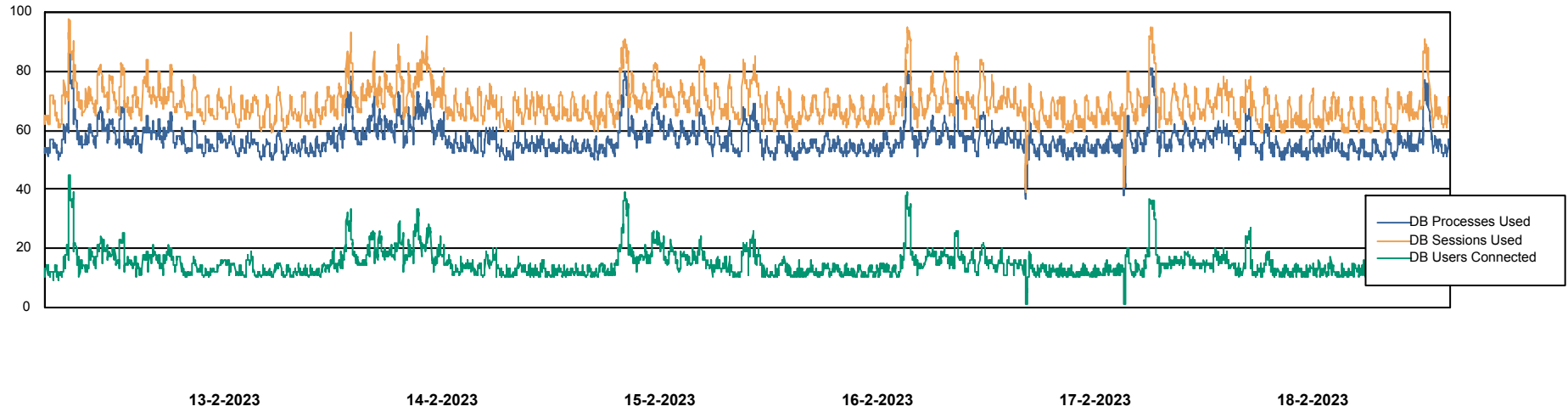
	Free disk space on C: (%)	Total disk space on C: (Gb)	Used disk space on C: (Gb)
18-2-2023	44	100	55
17-2-2023	45	100	55
16-2-2023	45	100	55
15-2-2023	45	100	55
14-2-2023	45	100	55
13-2-2023	45	100	55
12-2-2023	45	100	55

# Weekly SLA Customer Report

Customer NOA\_Production (24/7)  
Database ID 116



## Database Performance NOA\_BI\_NOVOBI\_Production

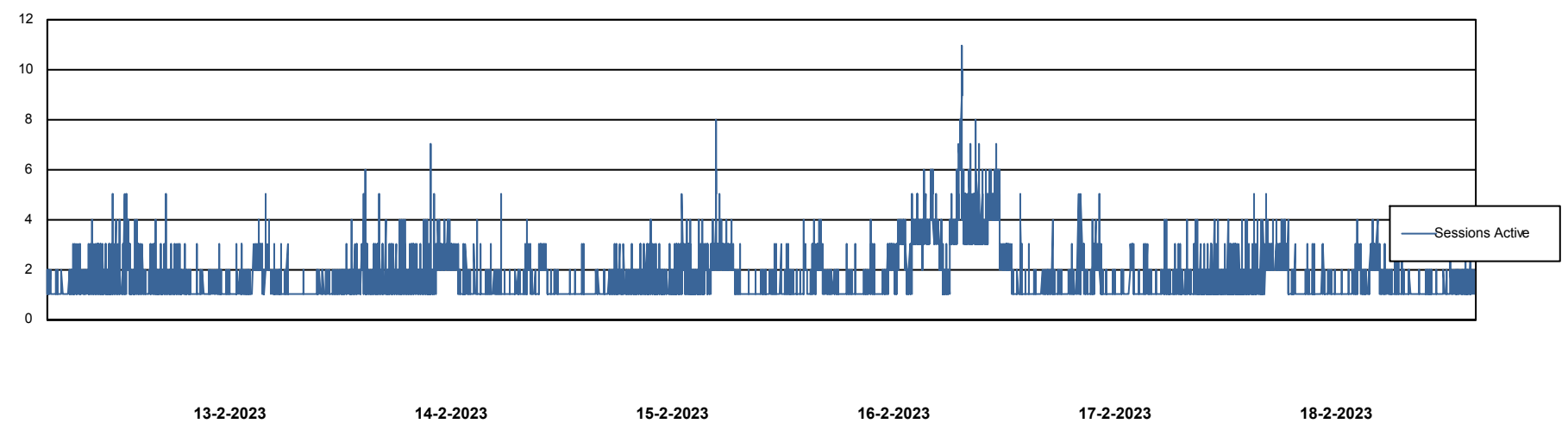
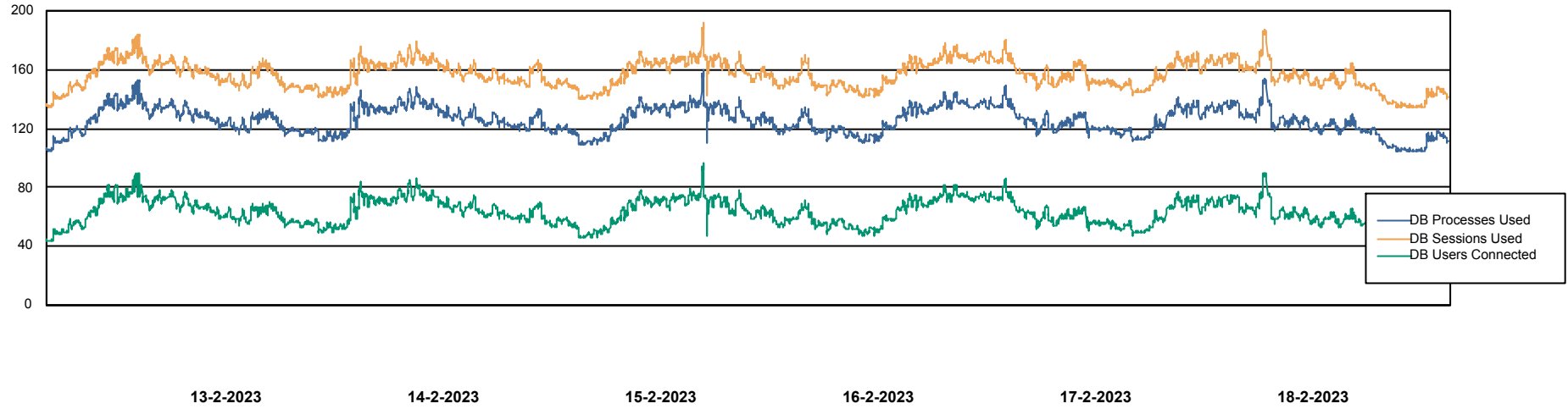


# Weekly SLA Customer Report

Customer NOA\_Production (24/7)  
Database ID 116



## Database Performance NOA\_PRD\_NovoABS01\_DB



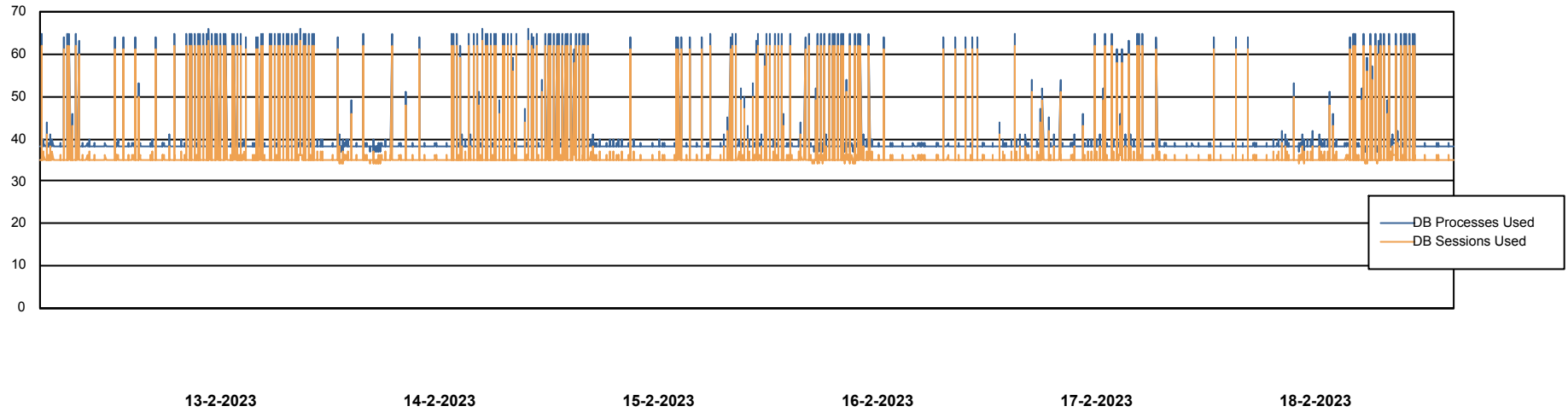
# Weekly SLA Customer Report

Customer NOA\_Production (24/7)  
Database ID 116



Database Performance NOA\_STB\_NovoABS03\_DB

DB Processes Max 300



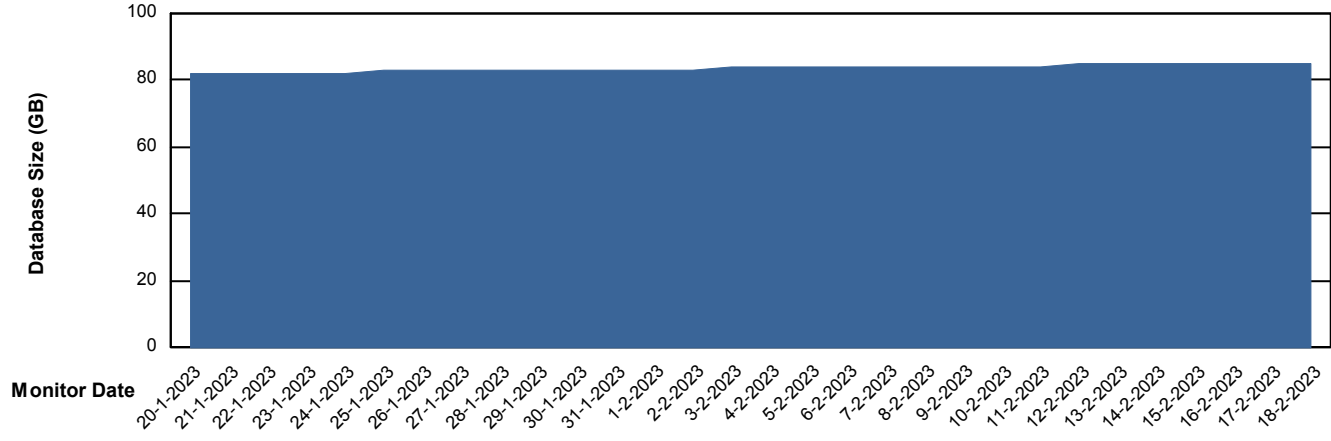
# Weekly SLA Customer Report

Customer NOA\_Production (24/7)  
Database ID 116



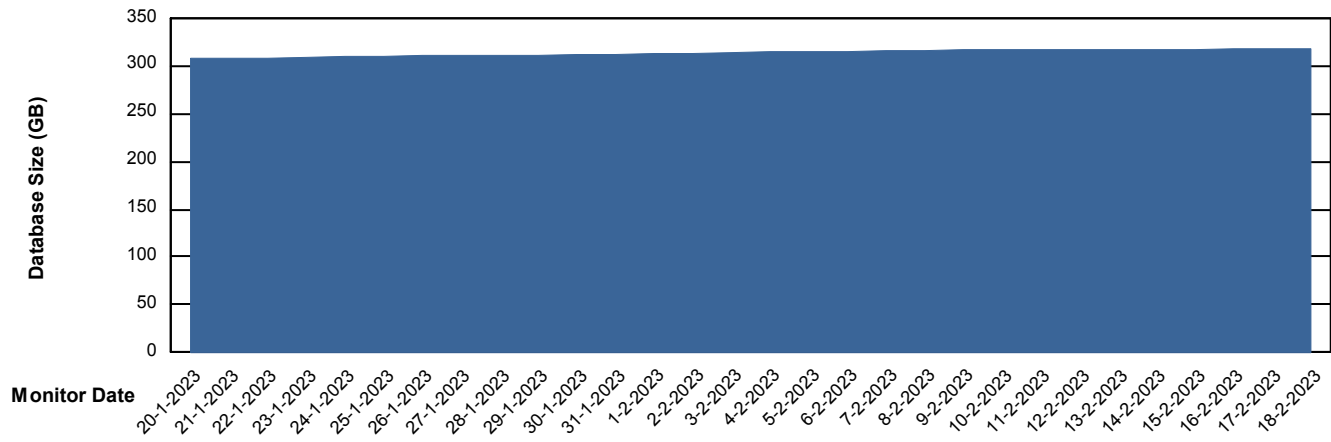
DATABASE SIZE NOA\_BI\_NOVOBI\_Production

### Database growth over last month



DATABASE SIZE NOA\_PRD\_NovoABS01\_DB

### Database growth over last month



# Weekly SLA Customer Report

Customer NOA\_Production (24/7)  
 Database ID 116



Database Tablespace NOA\_BI\_NOVOBI\_Production

Date	Tablespace Name	Filesize (Gb)	Usedsize (Gb)	Percentage free
18-2-2023	ABSDATA	43	34	20
	INDX	58	48	17
17-2-2023	ABSDATA	43	34	20
	INDX	58	48	17
16-2-2023	ABSDATA	43	34	21
	INDX	58	48	17
15-2-2023	ABSDATA	43	34	21
	INDX	58	48	17
14-2-2023	ABSDATA	43	34	21
	INDX	58	48	17
13-2-2023	ABSDATA	43	34	21
	INDX	58	48	18
12-2-2023	ABSDATA	43	34	21
	INDX	58	48	18

# Weekly SLA Customer Report

Customer NOA\_Production (24/7)  
 Database ID 116



Database Tablespace NOA\_PRD\_NovoABS01\_DB

Date	Tablespace Name	Filesize (Gb)	Usedsize (Gb)	Percentage free
18-2-2023	ABSDATA	163	119	27
	INDX	224	187	16
17-2-2023	ABSDATA	163	119	27
	INDX	224	187	16
16-2-2023	ABSDATA	163	119	27
	INDX	224	187	16
15-2-2023	ABSDATA	163	118	27
	INDX	224	187	16
14-2-2023	ABSDATA	163	118	27
	INDX	224	187	16
13-2-2023	ABSDATA	163	118	27
	INDX	224	187	17
12-2-2023	ABSDATA	163	118	28
	INDX	224	187	17

BI Status and last ETL error for NOA\_BI\_NOVOBI\_Production

	ma 13/2/2023	di 14/2/2023	wo 15/2/2023	do 16/2/2023	vr 17/2/2023	za 18/2/2023
<b>ABS DataWarehouse ETL Health</b>	OK	OK	OK	OK	OK	OK
<b>ABS DWHStaging ETL Health</b>	OK	OK	OK	OK	OK	OK

# Weekly SLA Customer Report

Customer NOA\_Production (24/7)  
Database ID 116



BI last ETL error for	NOA_BI_NOVOBI_Production
do, 16-02-2023	None
di, 14-02-2023	None
vr, 17-02-2023	None
zo, 12-02-2023	None
ma, 13-02-2023	None
di, 14-02-2023	None
wo, 15-02-2023	None
za, 18-02-2023	None
do, 16-02-2023	None
ma, 13-02-2023	None
zo, 12-02-2023	None
wo, 15-02-2023	None
vr, 17-02-2023	None
za, 18-02-2023	None

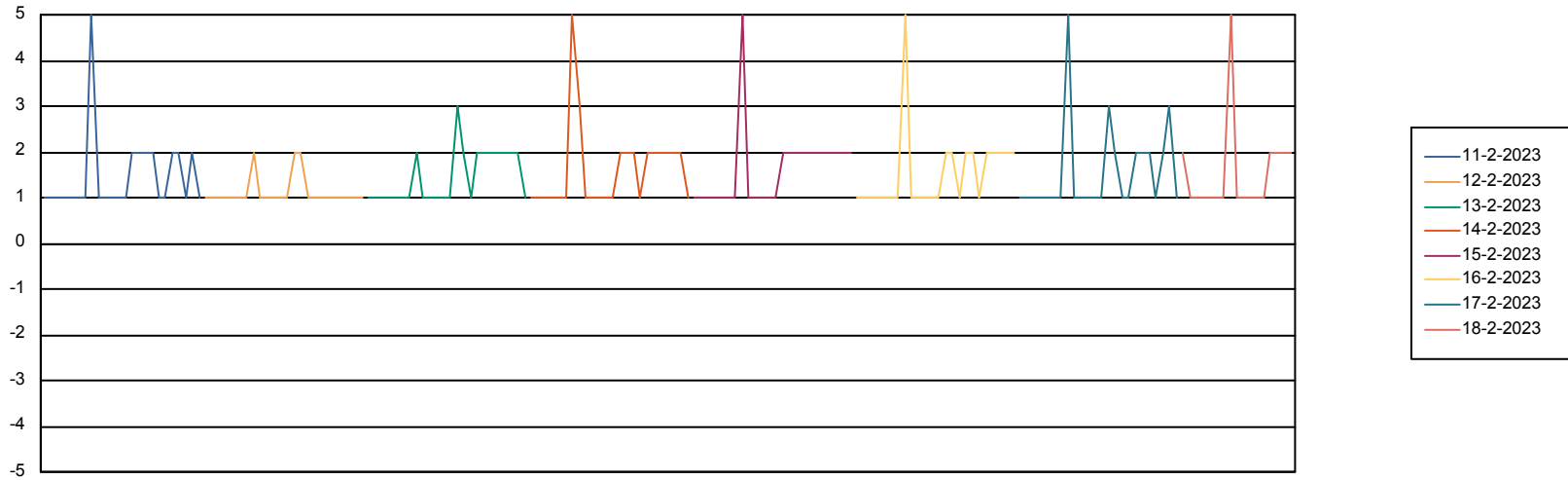
# Weekly SLA Customer Report

Customer NOA\_Production (24/7)  
Database ID 116



Standby Database Health NOA\_Production (24/7)

### Recovery lag for last 7 days



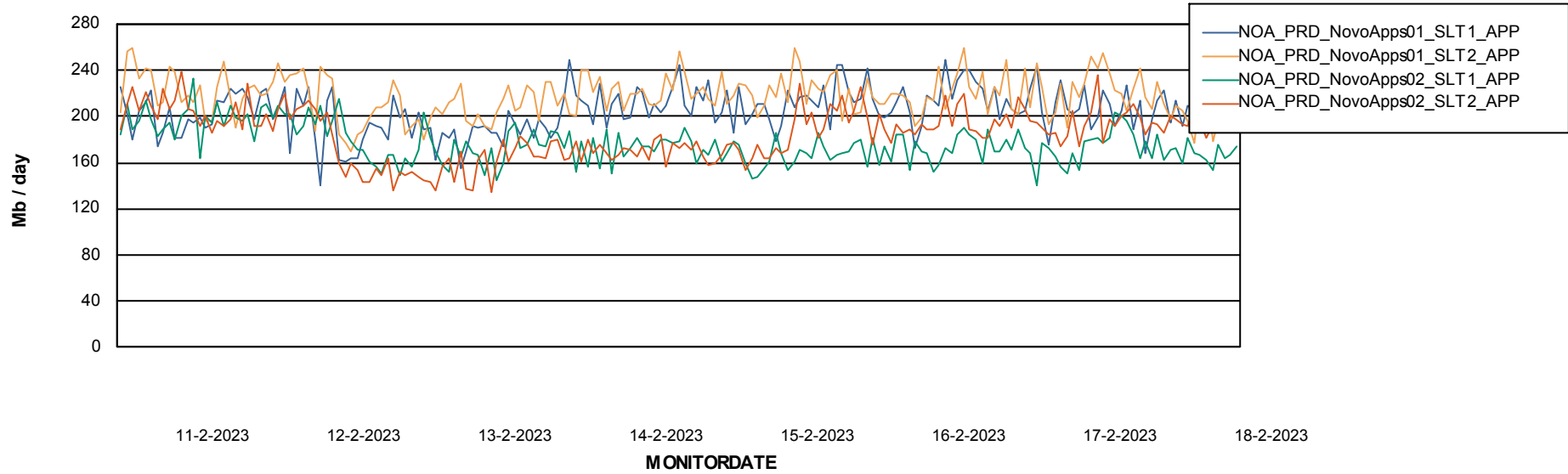
# Weekly SLA Customer Report

Customer NOA\_Production (24/7)  
Database ID 116

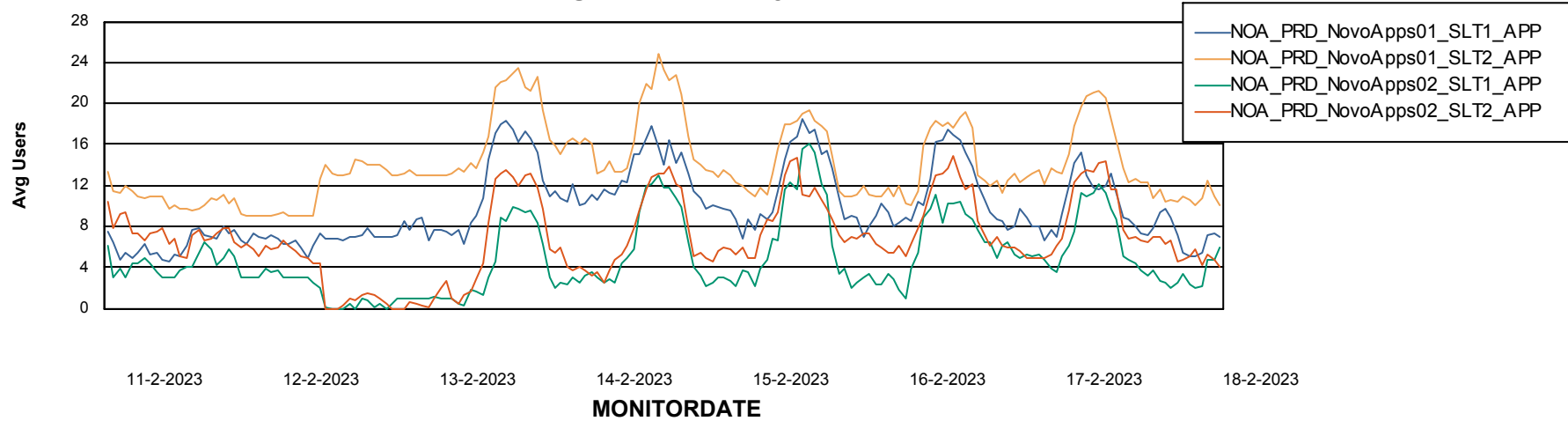


## ABSSolute Application Server Services

### Avg memory used per ABS Server Service



### Avg users per day per ABS server



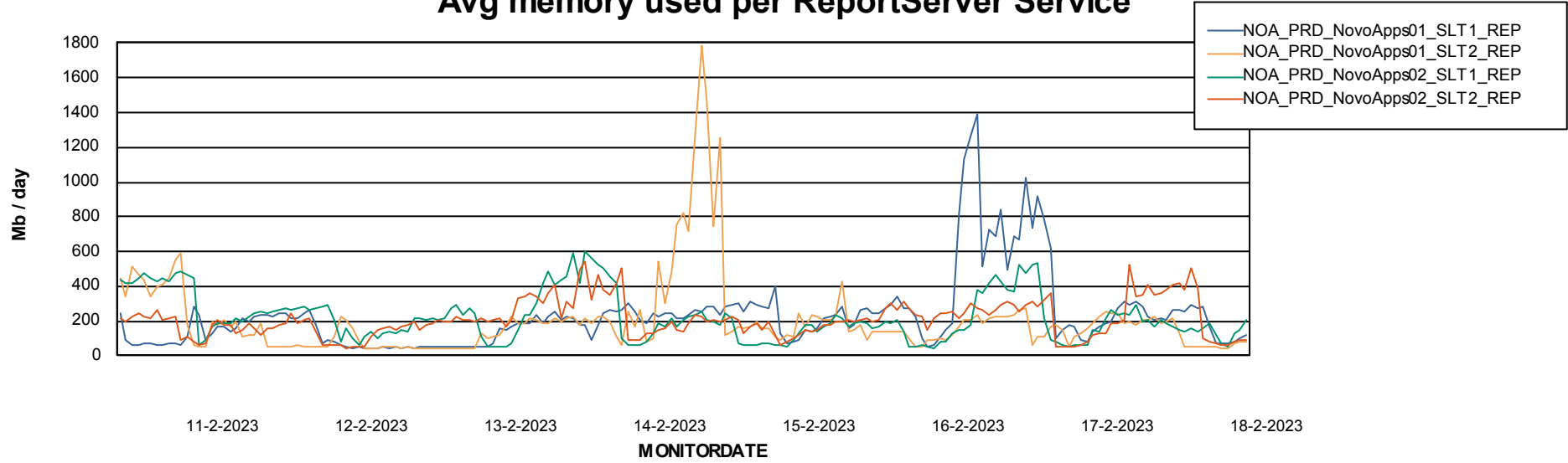
# Weekly SLA Customer Report

Customer NOA\_Production (24/7)  
Database ID 116



## ABSSolute Application ReportServer Services

### Avg memory used per ReportServer Service



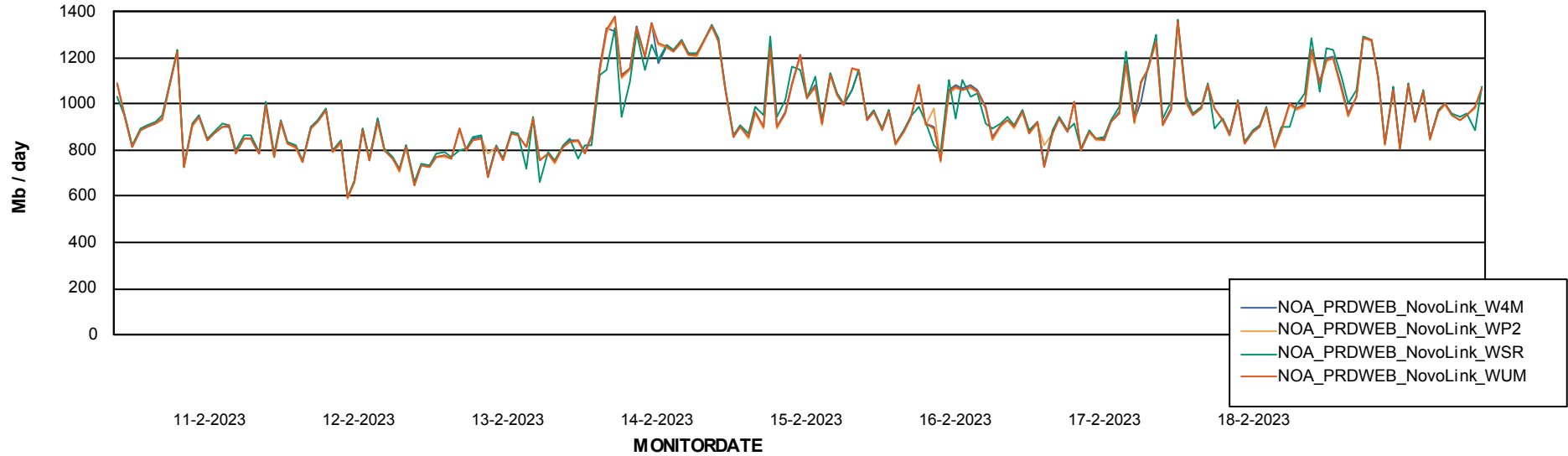
# Weekly SLA Customer Report

Customer NOA\_Production (24/7)  
Database ID 116



## ABSolute Web Component Services

### Avg memory used per ABS Web component



# Weekly SLA Customer Report

Customer NOA\_Production (24/7)  
Database ID 116



## Disaster per ABS component

