

# Weekly SLA Customer Report

Customer AUJ Production  
 Database ID 41



Harddisk Usage AUJ Prod. ABSSolute DB server: PABSDB1

	Free disk space on / (%)	Total disk space on / (Gb)	Used disk space on / (Gb)	Free disk space on /bk (%)	Total disk space on /bk (Gb)	Used disk space on /bk (Gb)	Free disk space on /u02 (%)	Total disk space on /u02 (Gb)	Used disk space on /u02 (Gb)
18-2-2023	88	200	25	63	1,200	444	24	1,799	1,372
17-2-2023	88	200	25	60	1,200	481	24	1,799	1,372
16-2-2023	88	200	25	60	1,200	481	24	1,799	1,372
15-2-2023	88	200	25	60	1,200	480	24	1,799	1,372
14-2-2023	88	200	25	60	1,200	477	24	1,799	1,372
13-2-2023	88	200	25	61	1,200	474	25	1,799	1,352
12-2-2023	88	200	25	61	1,200	472	25	1,799	1,342

Harddisk Usage AUJ Prod. BI DB server: PABSBI1

	Free disk space on / (%)	Total disk space on / (Gb)	Used disk space on / (Gb)	Free disk space on /u02 (%)	Total disk space on /u02 (Gb)	Used disk space on /u02 (Gb)
18-2-2023	88	200	25	69	1,000	305
17-2-2023	88	200	25	70	1,000	302
16-2-2023	88	200	25	70	1,000	302
15-2-2023	88	200	25	70	1,000	302
14-2-2023	88	200	25	70	1,000	301
13-2-2023	88	200	25	70	1,000	301
12-2-2023	88	200	25	70	1,000	304

# Weekly SLA Customer Report

Customer AUJ Production  
 Database ID 41



Harddisk Usage AUJ\_PRD\_ABS\_APP1

	Free disk space on / (%)	Total disk space on / (Gb)	Used disk space on / (Gb)	Free disk space on /abs (%)	Total disk space on /abs (Gb)	Used disk space on /abs (Gb)
18-2-2023	70	40	12	74	85	22
17-2-2023	70	40	12	75	85	22
16-2-2023	70	40	12	75	85	21
15-2-2023	70	40	12	76	85	20
14-2-2023	70	40	12	77	85	20
13-2-2023	70	40	12	78	85	19
12-2-2023	70	40	12	78	85	19

Harddisk Usage AUJ\_PRD\_ABS\_APP2

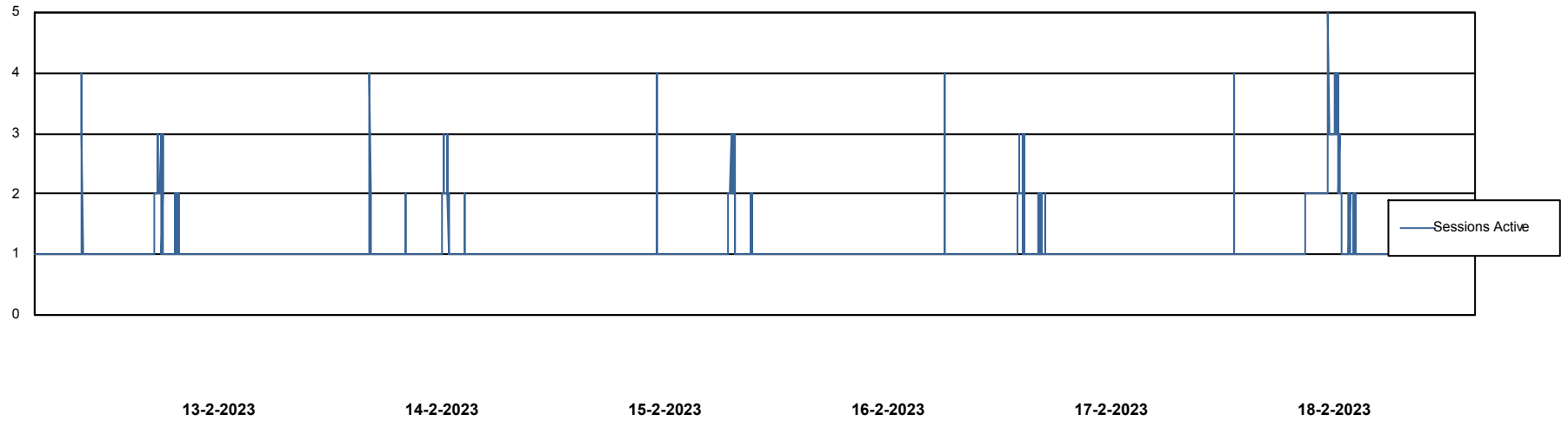
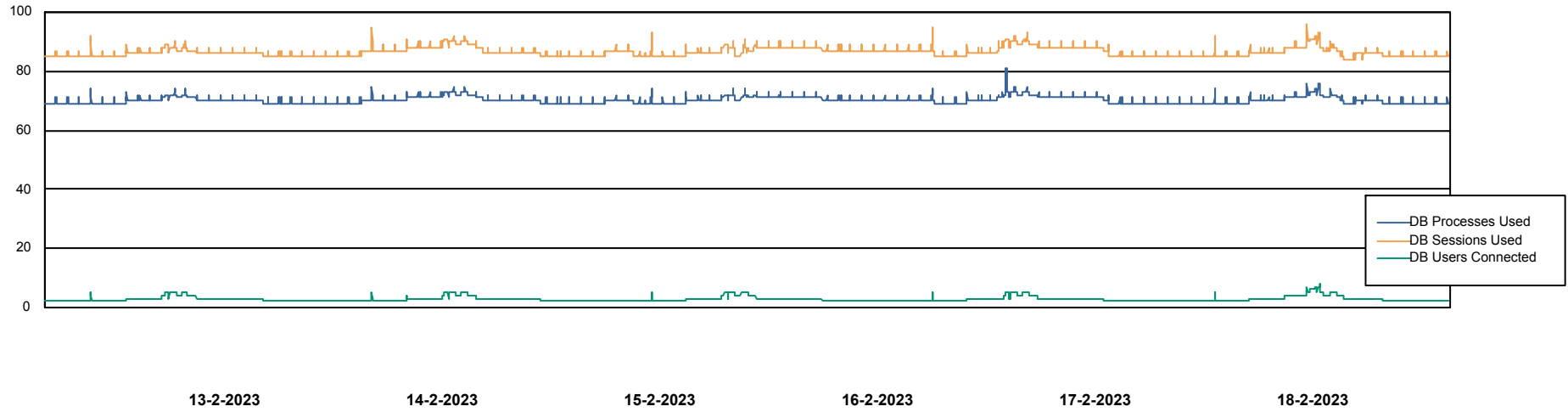
	Free disk space on / (%)	Total disk space on / (Gb)	Used disk space on / (Gb)	Free disk space on /abs (%)	Total disk space on /abs (Gb)	Used disk space on /abs (Gb)
18-2-2023	84	40	6	77	85	19
17-2-2023	84	40	6	77	85	19
16-2-2023	84	40	6	78	85	19
15-2-2023	84	40	6	79	85	18
14-2-2023	84	40	6	79	85	18
13-2-2023	84	40	6	80	85	17
12-2-2023	84	40	6	80	85	17

# Weekly SLA Customer Report

Customer AUJ Production  
Database ID 41



## Database Performance AUJ Prod. BI DB (PABSBI1 server)

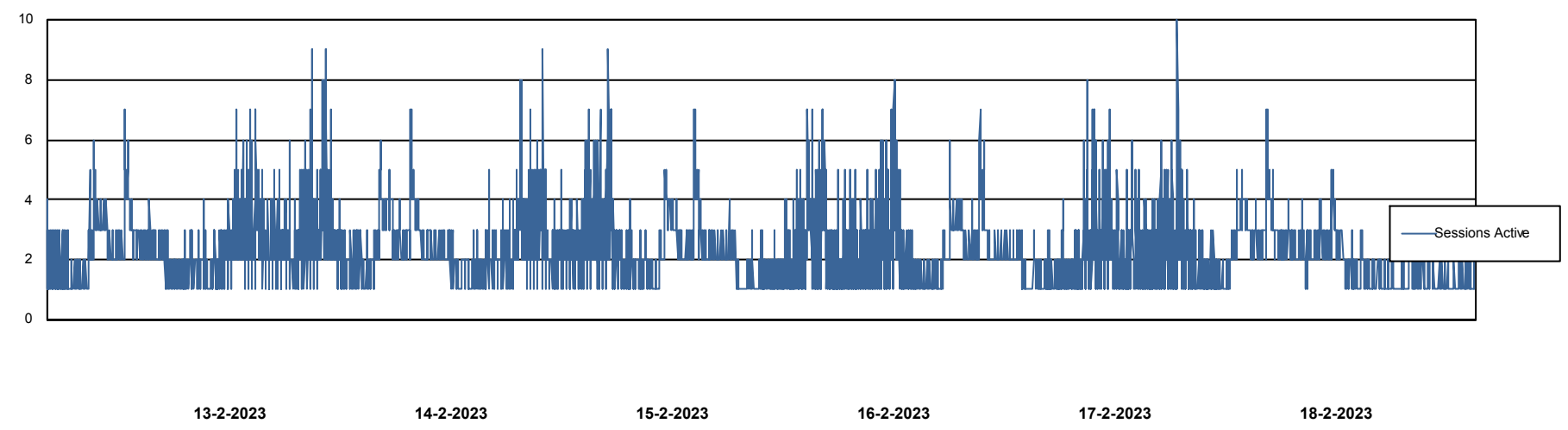
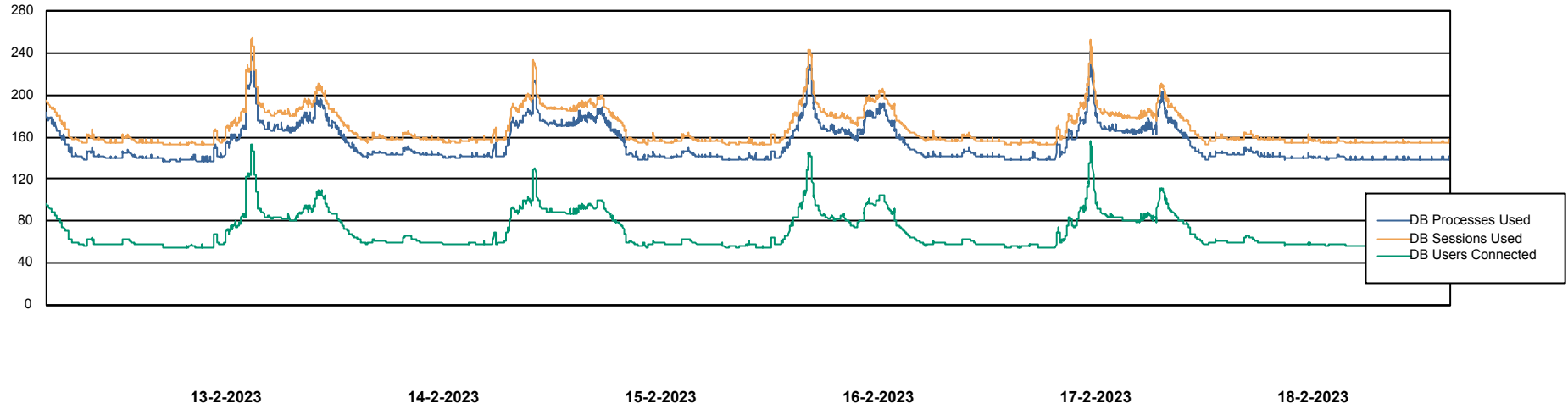


# Weekly SLA Customer Report

Customer AUJ Production  
Database ID 41



## Database Performance AUJ\_DB1\_Primary



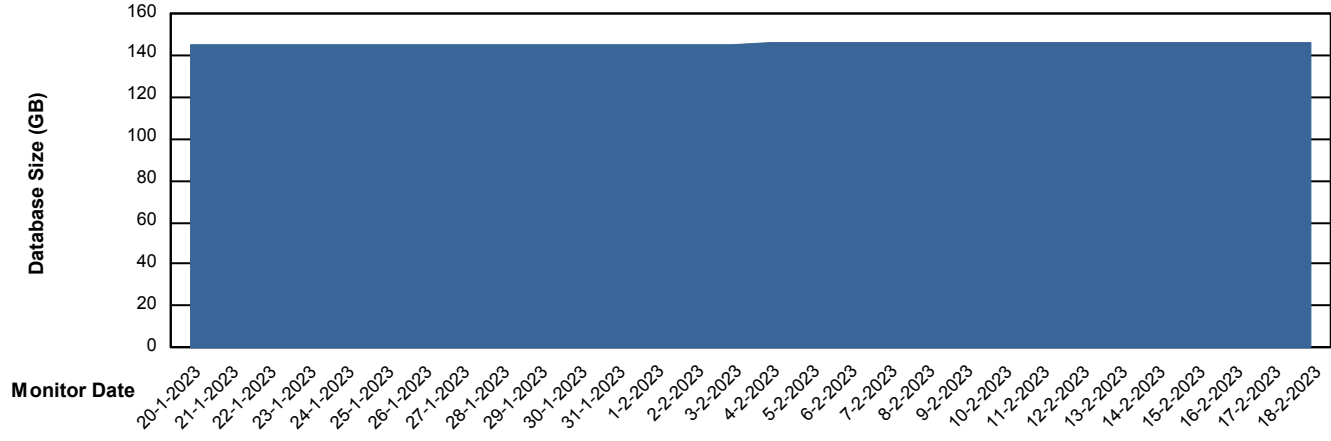
# Weekly SLA Customer Report

Customer AUJ Production  
Database ID 41



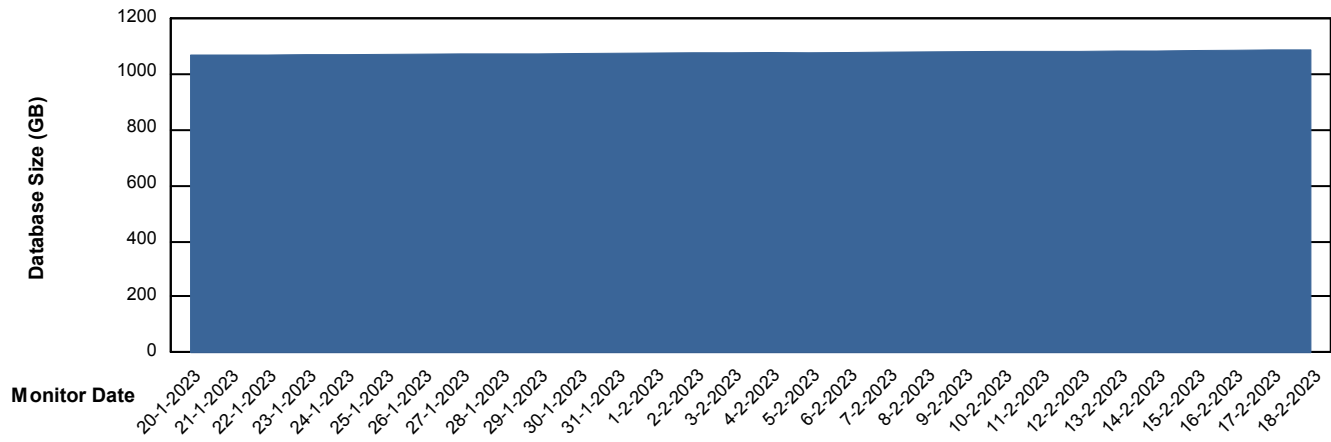
DATABASE SIZE AUJ Prod. BI DB (PABSBI1 server)

### Database growth over last month



DATABASE SIZE AUJ\_DB1\_Primary

### Database growth over last month



# Weekly SLA Customer Report

Customer AUJ Production  
Database ID 41



Database Tablespace AUJ Prod. BI DB (PABSBI1 server)

Date	Tablespace Name	Filesize (Gb)	Usedsize (Gb)	Percentage free
18-2-2023	ABSDATA	144	120	17
	INDX	29	24	18
17-2-2023	ABSDATA	144	120	17
	INDX	29	24	18
16-2-2023	ABSDATA	144	120	17
	INDX	29	24	18
15-2-2023	ABSDATA	144	120	17
	INDX	29	24	18
14-2-2023	ABSDATA	144	120	17
	INDX	29	24	18
13-2-2023	ABSDATA	144	120	17
	INDX	29	24	18
12-2-2023	ABSDATA	144	119	17
	INDX	29	24	18

# Weekly SLA Customer Report

Customer AUJ Production  
 Database ID 41



Database Tablespace AUJ\_DB1\_Primary

Date	Tablespace Name	Filesize (Gb)	Usedsize (Gb)	Percentage free
18-2-2023	ABSDATA	607	504	17
	INDX	696	575	17
17-2-2023	ABSDATA	607	504	17
	INDX	696	575	17
16-2-2023	ABSDATA	607	503	17
	INDX	696	574	18
15-2-2023	ABSDATA	607	503	17
	INDX	696	574	18
14-2-2023	ABSDATA	607	501	17
	INDX	696	573	18
13-2-2023	ABSDATA	607	501	17
	INDX	696	573	18
12-2-2023	ABSDATA	592	501	15
	INDX	681	572	16

BI Status and last ETL error for AUJ Prod. BI DB (PABSBI1 server)

	ma 13/2/2023	di 14/2/2023	wo 15/2/2023	do 16/2/2023	vr 17/2/2023	za 18/2/2023
<b>ABS DataWarehouse ETL Health</b>	OK	OK	OK	OK	OK	OK
<b>ABS DWHStaging ETL Health</b>	OK	OK	OK	OK	OK	OK

# Weekly SLA Customer Report

Customer AUJ Production  
Database ID 41



BI last ETL error for	AUJ Prod. BI DB (PABSBI1 server)
zo, 12-02-2023	None
wo, 15-02-2023	None
do, 16-02-2023	None
vr, 17-02-2023	None
di, 14-02-2023	None
wo, 15-02-2023	None
zo, 12-02-2023	None
za, 18-02-2023	None
vr, 17-02-2023	None
di, 14-02-2023	None
do, 16-02-2023	None
ma, 13-02-2023	None
ma, 13-02-2023	None
za, 18-02-2023	None

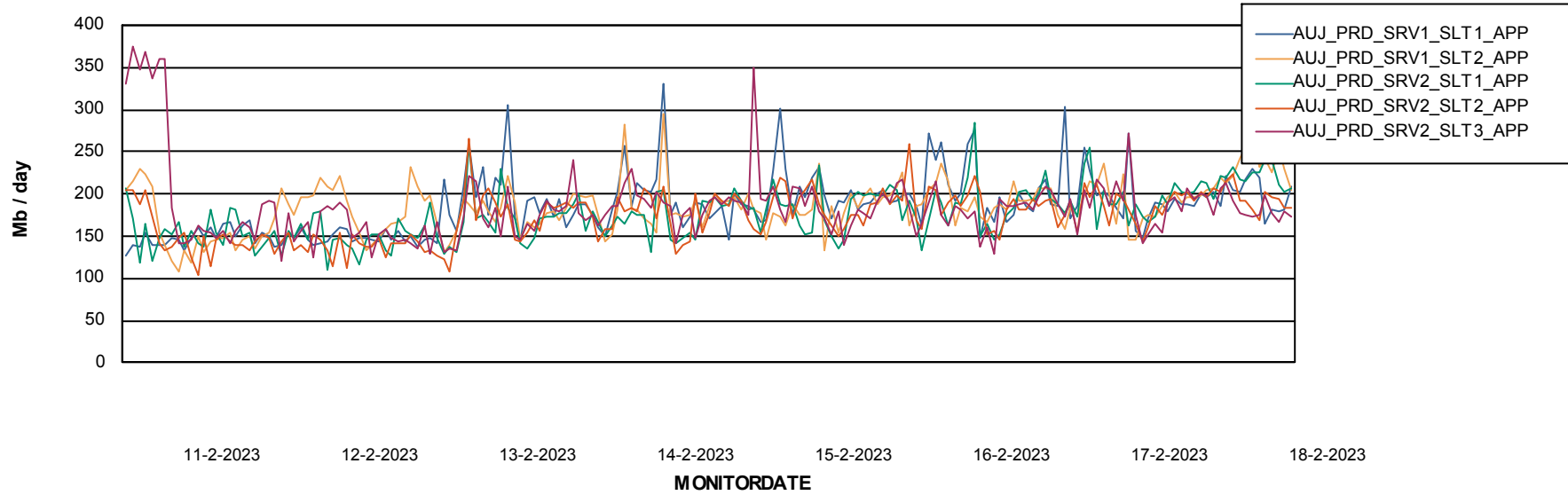
# Weekly SLA Customer Report

Customer AUJ Production  
Database ID 41

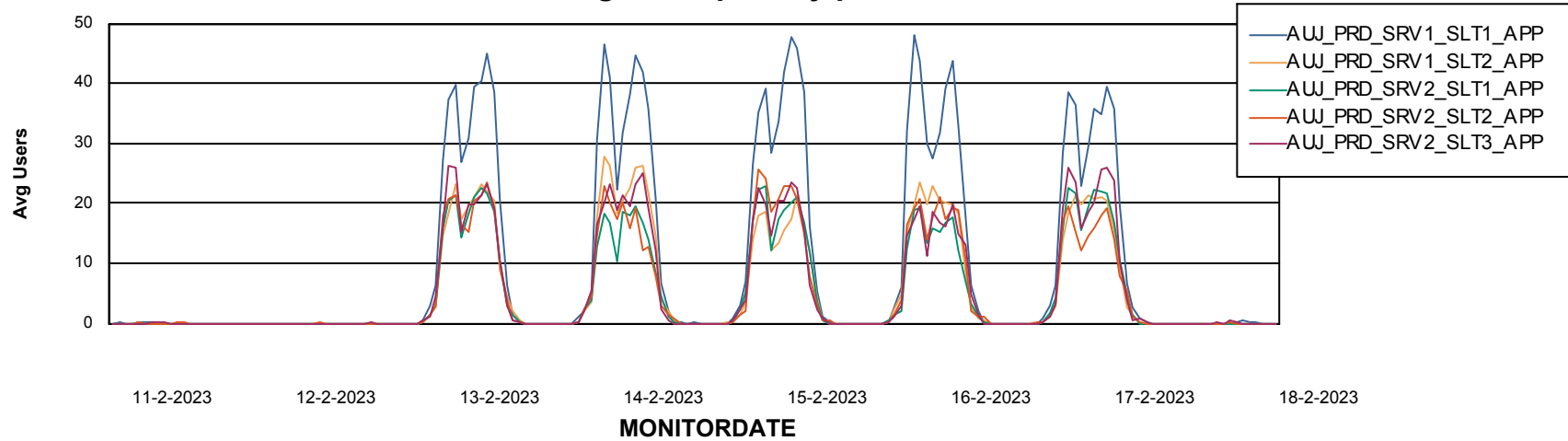


## ABSolute Application Server Services

### Avg memory used per ABS Server Service



### Avg users per day per ABS server



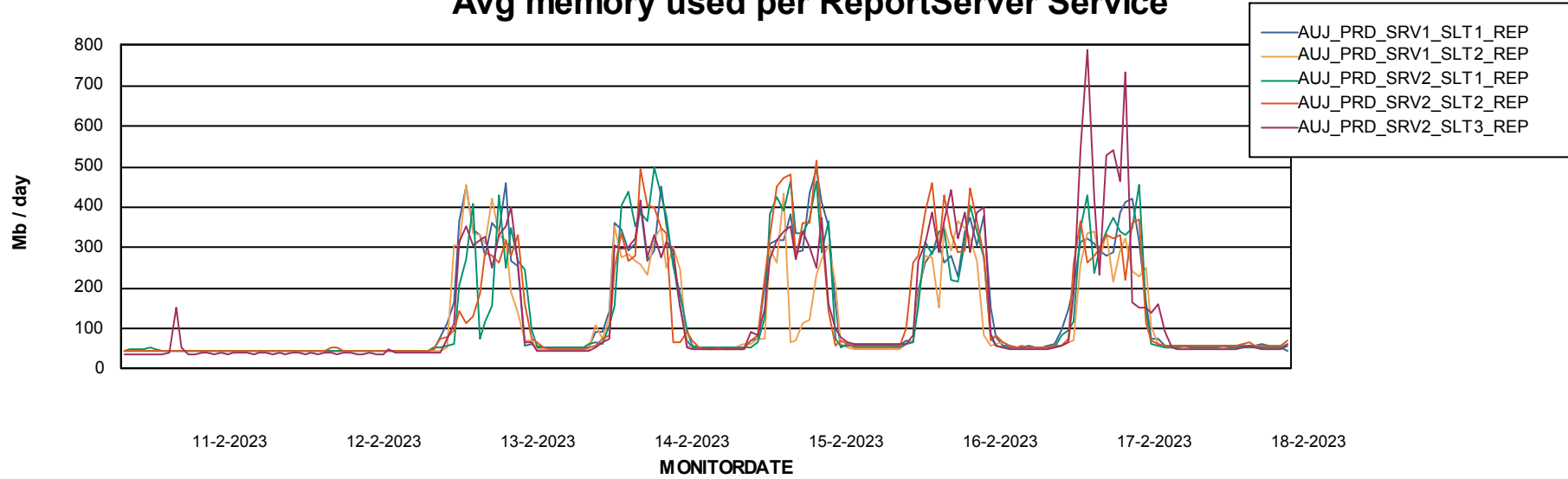
# Weekly SLA Customer Report

Customer AUJ Production  
Database ID 41



## ABSSolute Application ReportServer Services

### Avg memory used per ReportServer Service



### Disaster per ABS component

