

# Weekly SLA Customer Report

Customer AUJ Production  
Database ID 41



## Harddisk Usage AUJ Prod. ABSSolute DB server: PABSDB1

	Free disk space on / (%)	Total disk space on / (Gb)	Used disk space on / (Gb)	Free disk space on /bk (%)	Total disk space on /bk (Gb)	Used disk space on /bk (Gb)	Free disk space on /u02 (%)	Total disk space on /u02 (Gb)	Used disk space on /u02 (Gb)
11-2-2023	88	200	25	63	1,200	442	25	1,799	1,342
10-2-2023	88	200	25	48	950	479	16	1,612	1,342
9-2-2023	88	200	25	40	800	479	11	1,499	1,342
8-2-2023	88	200	25	40	800	478	11	1,499	1,342
7-2-2023	88	200	25	41	800	475	11	1,499	1,342
6-2-2023	88	200	25	41	800	472	11	1,499	1,342
5-2-2023	88	200	25	41	800	471	11	1,499	1,342

## Harddisk Usage AUJ Prod. BI DB server: PABSBI1

	Free disk space on / (%)	Total disk space on / (Gb)	Used disk space on / (Gb)	Free disk space on /u02 (%)	Total disk space on /u02 (Gb)	Used disk space on /u02 (Gb)
11-2-2023	88	200	25	70	1,000	305
10-2-2023	88	200	25	70	1,000	301
9-2-2023	88	200	25	70	1,000	301
8-2-2023	88	200	25	70	1,000	301
7-2-2023	88	200	25	70	1,000	301
6-2-2023	88	200	25	70	1,000	301
5-2-2023	88	200	25	70	1,000	304

# Weekly SLA Customer Report

Customer AUJ Production  
Database ID 41



## Harddisk Usage AUJ\_PRD\_ABS\_APP1

	Free disk space on / (%)	Total disk space on / (Gb)	Used disk space on / (Gb)	Free disk space on /abs (%)	Total disk space on /abs (Gb)	Used disk space on /abs (Gb)
11-2-2023	70	40	12	78	85	19
10-2-2023	70	40	12	73	85	23
9-2-2023	70	40	12	71	85	24
8-2-2023	70	40	12	72	85	23
7-2-2023	70	40	12	73	85	23
6-2-2023	70	40	12	74	85	22
5-2-2023	70	40	12	74	85	22

## Harddisk Usage AUJ\_PRD\_ABS\_APP2

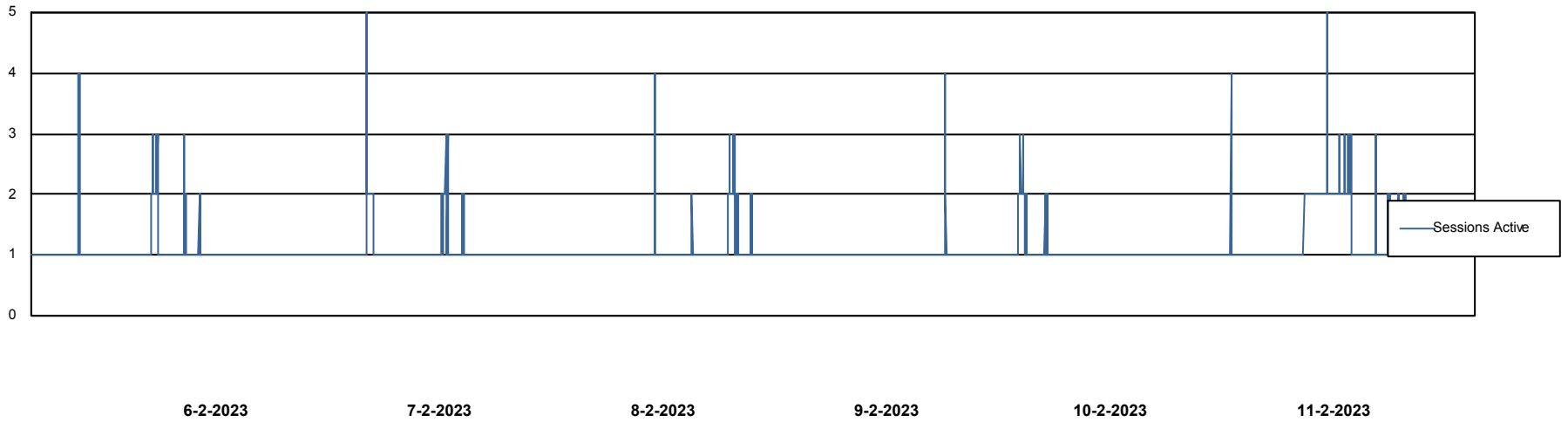
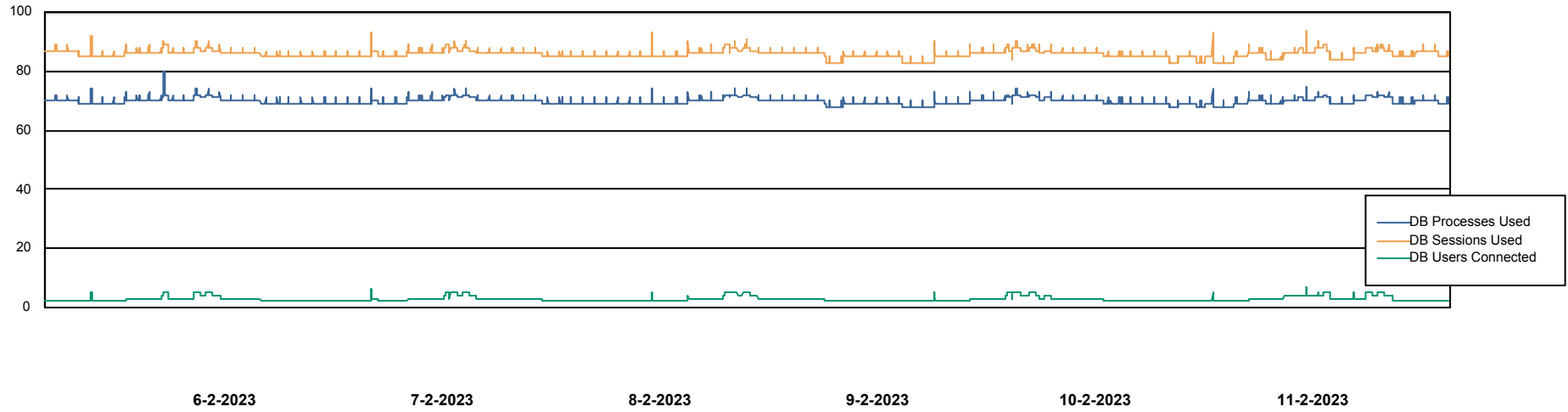
	Free disk space on / (%)	Total disk space on / (Gb)	Used disk space on / (Gb)	Free disk space on /abs (%)	Total disk space on /abs (Gb)	Used disk space on /abs (Gb)
11-2-2023	84	40	6	80	85	17
10-2-2023	84	40	6	77	85	20
9-2-2023	84	40	6	76	85	20
8-2-2023	84	40	6	76	85	20
7-2-2023	84	40	6	77	85	20
6-2-2023	84	40	6	78	85	19
5-2-2023	84	40	6	78	85	19

# Weekly SLA Customer Report

Customer AUJ Production  
Database ID 41



## Database Performance AUJ Prod. BI DB (PABSBI1 server)

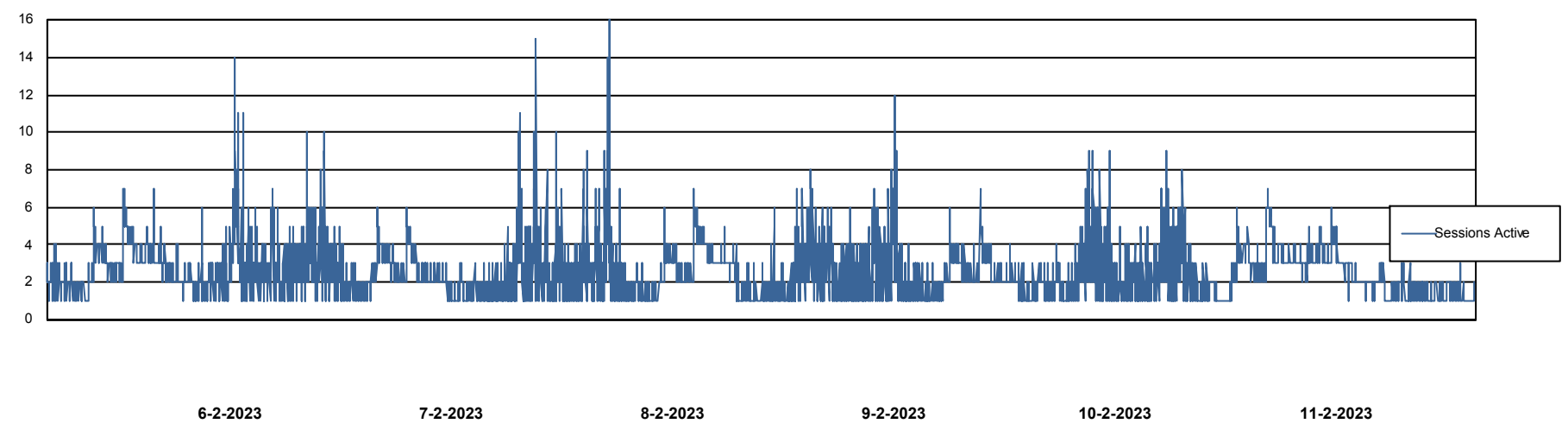
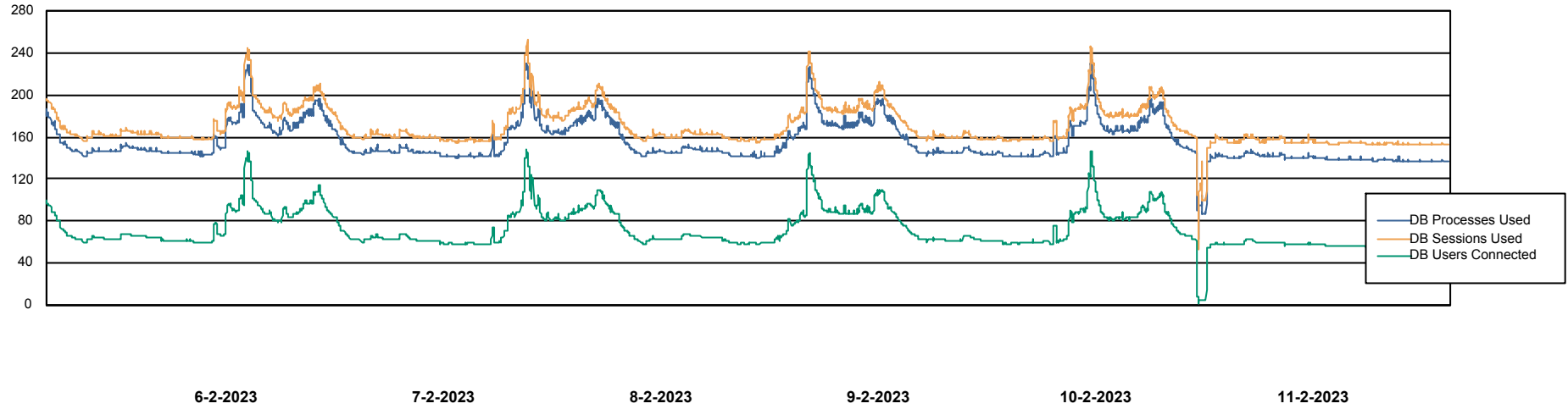


# Weekly SLA Customer Report

Customer AUJ Production  
Database ID 41



## Database Performance AUJ\_DB1\_Primary



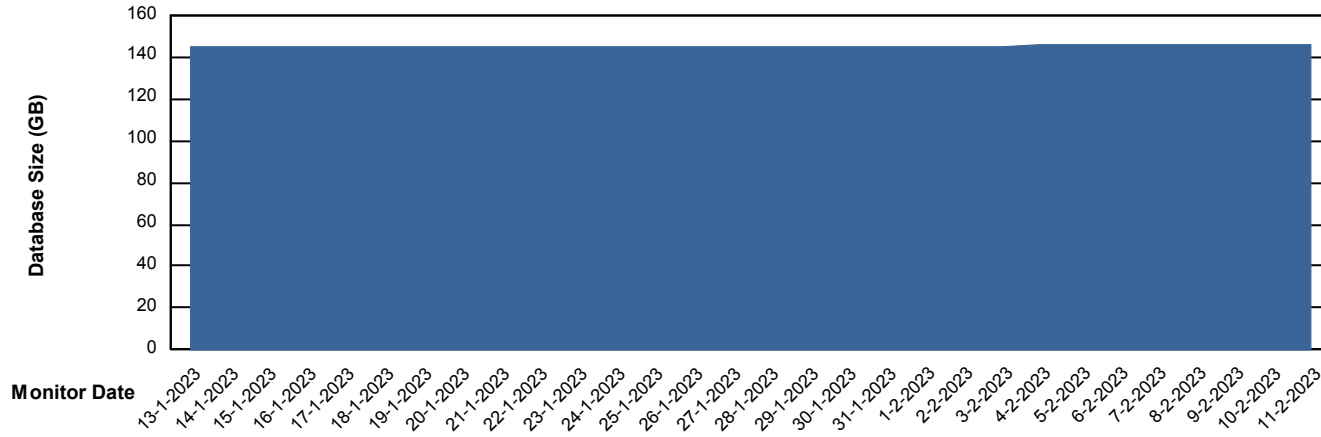
# Weekly SLA Customer Report

Customer AUJ Production  
Database ID 41



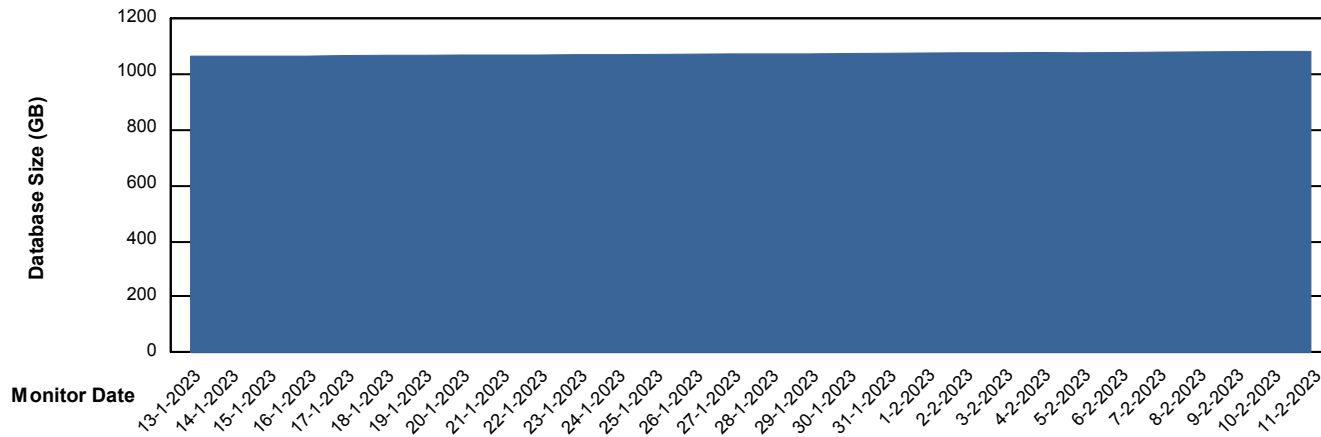
DATABASE SIZE AUJ Prod. BI DB (PABSBI1 server)

### Database growth over last month



DATABASE SIZE AUJ\_DB1\_Primary

### Database growth over last month



# Weekly SLA Customer Report

Customer AUJ Production  
 Database ID 41



Database Tablespace AUJ Prod. BI DB (PABSBI1 server)

Date	Tablespace Name	Filesize (Gb)	Usedsize (Gb)	Percentage free
11-2-2023	ABSDATA	144	119	17
	INDX	29	24	18
10-2-2023	ABSDATA	144	119	17
	INDX	29	24	18
9-2-2023	ABSDATA	144	119	17
	INDX	29	24	18
8-2-2023	ABSDATA	144	119	17
	INDX	29	24	18
7-2-2023	ABSDATA	144	119	17
	INDX	29	24	18
6-2-2023	ABSDATA	144	119	17
	INDX	29	24	18
5-2-2023	ABSDATA	144	119	17
	INDX	29	24	19

# Weekly SLA Customer Report

Customer AUJ Production  
 Database ID 41



Database Tablespace AUJ\_DB1\_Primary

Date	Tablespace Name	Filesize (Gb)	Usedsize (Gb)	Percentage free
11-2-2023	ABSDATA	592	501	15
	INDX	681	572	16
10-2-2023	ABSDATA	592	501	15
	INDX	681	572	16
9-2-2023	ABSDATA	592	500	16
	INDX	681	572	16
8-2-2023	ABSDATA	592	500	16
	INDX	681	572	16
7-2-2023	ABSDATA	592	499	16
	INDX	681	571	16
6-2-2023	ABSDATA	592	499	16
	INDX	681	571	16
5-2-2023	ABSDATA	592	498	16
	INDX	681	570	16

BI Status and last ETL error for AUJ Prod. BI DB (PABSBI1 server)

	ma 6/2/2023	di 7/2/2023	wo 8/2/2023	do 9/2/2023	vr 10/2/2023	za 11/2/2023
<b>ABS DataWarehouse ETL Health</b>	OK	OK	OK	OK	OK	OK
<b>ABS DWHStaging ETL Health</b>	OK	OK	OK	OK	OK	OK

# Weekly SLA Customer Report

Customer AUJ Production  
Database ID 41



BI last ETL error for	AUJ Prod. BI DB (PABSBI1 server)
di, 7-02-2023	None
vr, 10-02-2023	None
vr, 10-02-2023	None
za, 11-02-2023	None
zo, 5-02-2023	None
za, 11-02-2023	None
di, 7-02-2023	None
wo, 8-02-2023	None
ma, 6-02-2023	None
do, 9-02-2023	None
ma, 6-02-2023	None
zo, 5-02-2023	None
wo, 8-02-2023	None
do, 9-02-2023	None

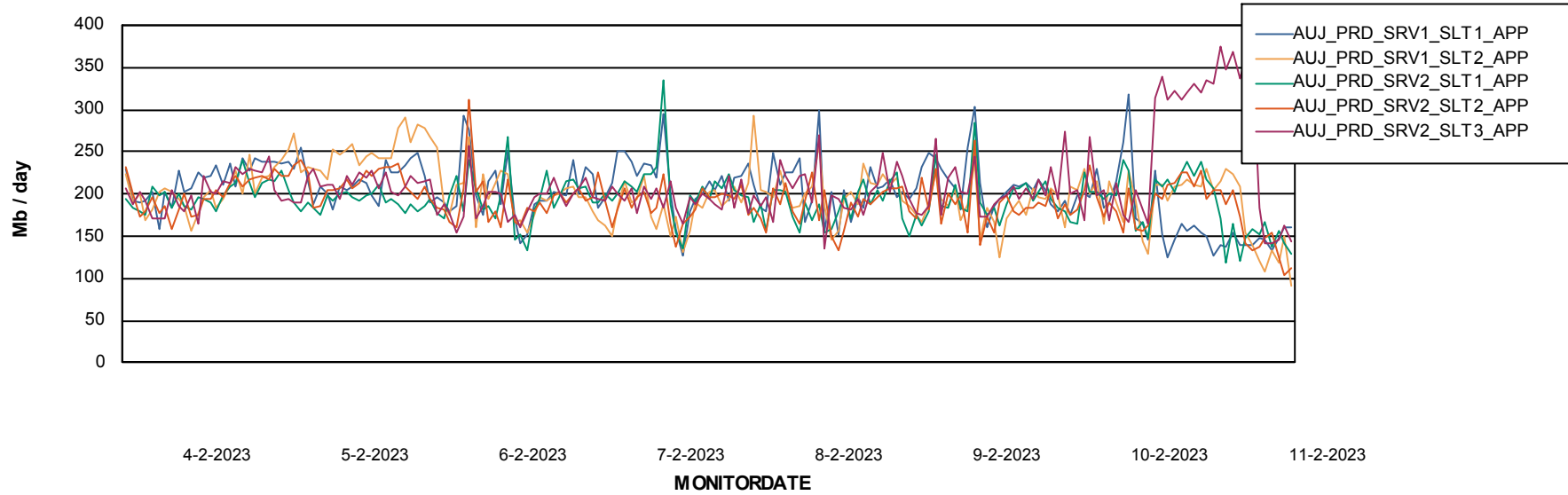
# Weekly SLA Customer Report

Customer AUJ Production  
Database ID 41

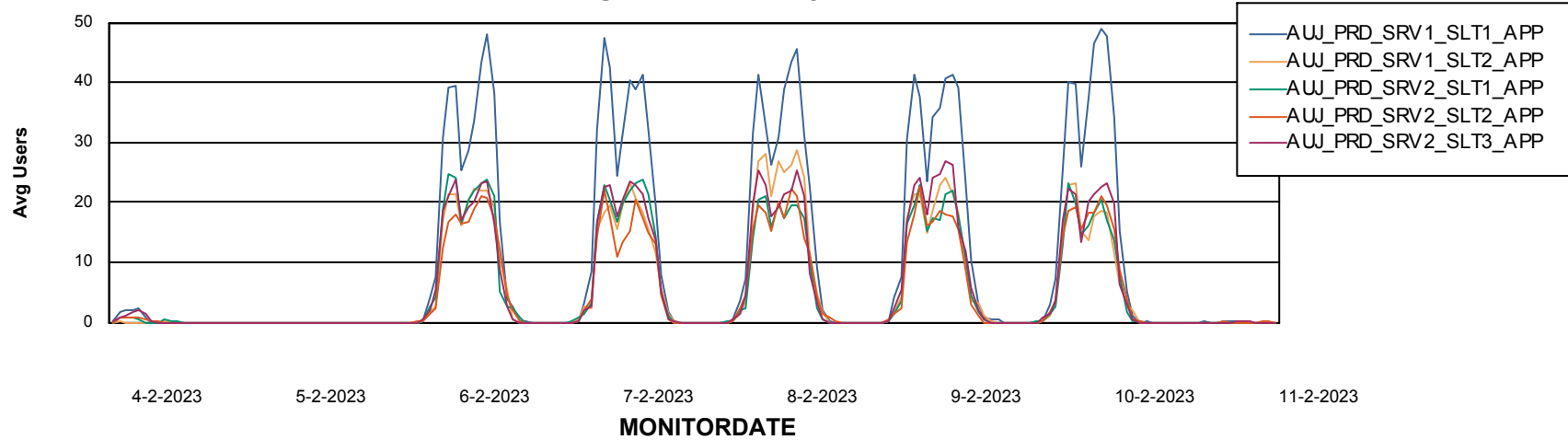


## ABSSolute Application Server Services

### Avg memory used per ABS Server Service



### Avg users per day per ABS server



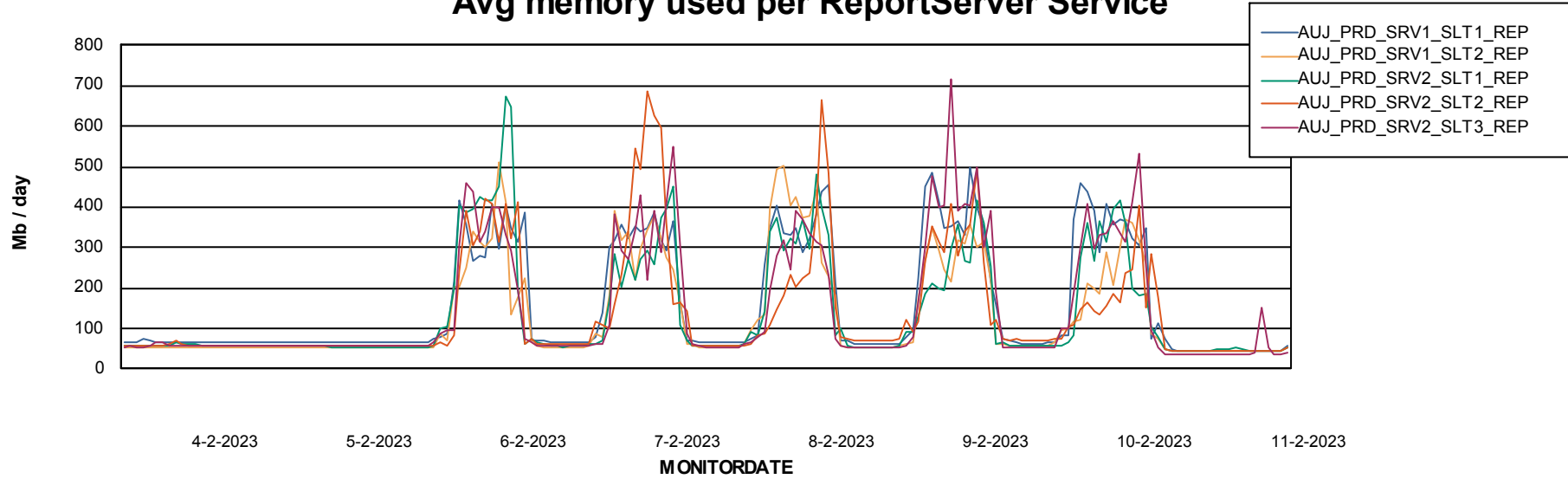
# Weekly SLA Customer Report

Customer AUJ Production  
Database ID 41



## ABSSolute Application ReportServer Services

### Avg memory used per ReportServer Service



### Disaster per ABS component

