

Weekly SLA Customer Report

Customer NIX_Production
 Database ID 51



Harddisk Usage NIX_PRD_ABSAPP01

	Free disk space on C: (%)	Total disk space on C: (Gb)	Used disk space on C: (Gb)	Free disk space on E: (%)	Total disk space on E: (Gb)	Used disk space on E: (Gb)
4-2-2023	56	207	91	100	98	0
3-2-2023	56	207	91	100	98	0
2-2-2023	56	207	91	100	98	0
1-2-2023	56	207	91	100	98	0
31-1-2023	56	207	91	100	98	0
30-1-2023	56	207	91	100	98	0
29-1-2023	56	207	90	100	98	0

Harddisk Usage NIX_PRD_ABSAPP04

	Free disk space on C: (%)	Total disk space on C: (Gb)	Used disk space on C: (Gb)
4-2-2023	34	127	84
3-2-2023	34	127	83
2-2-2023	34	127	84
1-2-2023	32	127	86
31-1-2023	34	127	84
30-1-2023	32	127	85
29-1-2023	35	127	83

Weekly SLA Customer Report

Customer NIX_Production
 Database ID 51



Harddisk Usage NIX_PRD_ABSWEB02

	Free disk space on C: (%)	Total disk space on C: (Gb)	Used disk space on C: (Gb)
4-2-2023	88	300	36
3-2-2023	88	300	36
2-2-2023	88	300	36
1-2-2023	88	300	36
31-1-2023	88	300	36
30-1-2023	88	300	37
29-1-2023	88	300	36

Harddisk Usage NIX_PRD_BISRV

	Free disk space on C: (%)	Total disk space on C: (Gb)	Used disk space on C: (Gb)
4-2-2023	37	836	527
3-2-2023	36	836	532
2-2-2023	36	836	532
1-2-2023	36	836	532
31-1-2023	36	836	531
30-1-2023	37	836	530
29-1-2023	36	836	533

Weekly SLA Customer Report

Customer NIX_Production
 Database ID 51



Harddisk Usage NIX_PRD_ORCDB1

	Free disk space on C: (%)	Total disk space on C: (Gb)	Used disk space on C: (Gb)	Free disk space on D: (%)	Total disk space on D: (Gb)	Used disk space on D: (Gb)	Free disk space on E: (%)	Total disk space on E: (Gb)	Used disk space on E: (Gb)	Free disk space on F: (%)
4-2-2023	72	554	157	48	586	307	54	605	277	43
3-2-2023	72	554	157	48	586	307	54	605	277	43
2-2-2023	64	554	199	48	586	307	54	605	277	43
1-2-2023	60	554	222	48	586	307	54	605	277	43
31-1-2023	72	554	157	48	586	307	54	605	277	43
30-1-2023	72	554	157	48	586	307	54	605	277	43
29-1-2023	72	554	157	48	586	307	54	605	277	43

Harddisk Usage NIX_PRD_ORCDB2

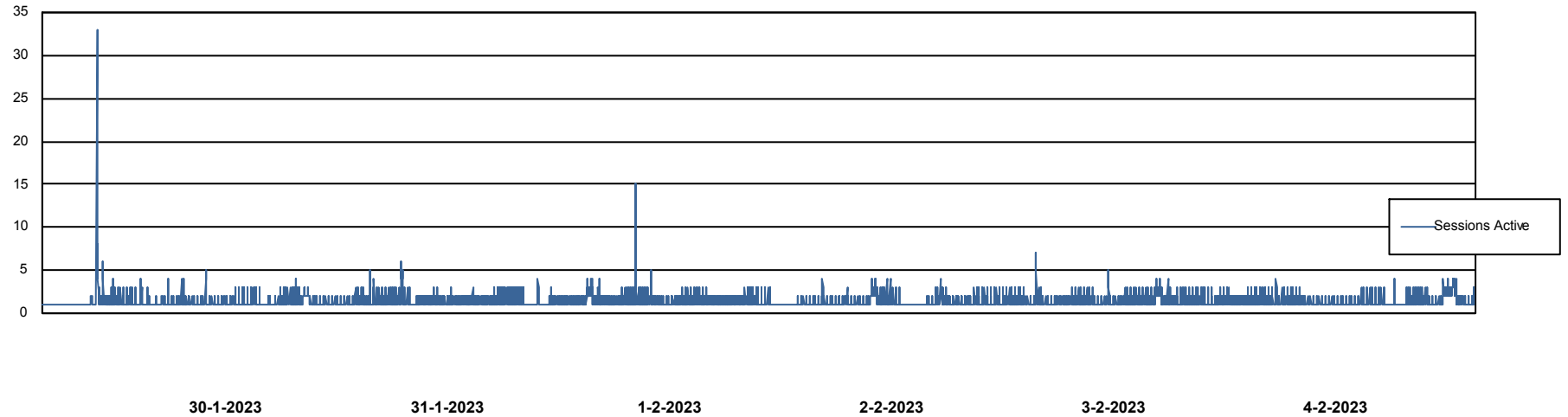
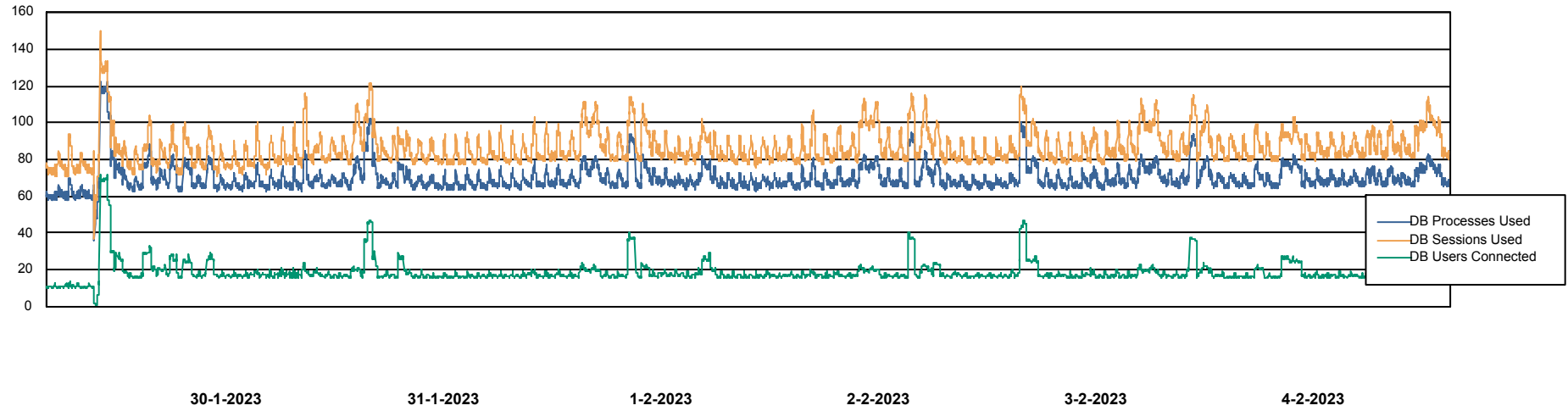
	Free disk space on C: (%)	Total disk space on C: (Gb)	Used disk space on C: (Gb)	Free disk space on D: (%)	Total disk space on D: (Gb)	Used disk space on D: (Gb)	Free disk space on E: (%)	Total disk space on E: (Gb)	Used disk space on E: (Gb)	Free disk space on F: (%)
4-2-2023	89	574	65	43	488	278	60	684	277	87
3-2-2023	89	574	64	43	488	278	60	684	276	87
2-2-2023	89	574	64	43	488	278	60	684	277	87
1-2-2023	89	574	64	43	488	278	60	684	277	87
31-1-2023	89	574	64	43	488	278	60	684	277	88
30-1-2023	89	574	64	43	488	278	60	684	276	88
29-1-2023	89	574	64	43	488	278	60	684	276	87

Weekly SLA Customer Report

Customer NIX_Production
Database ID 51



Database Performance NIXDB_BI

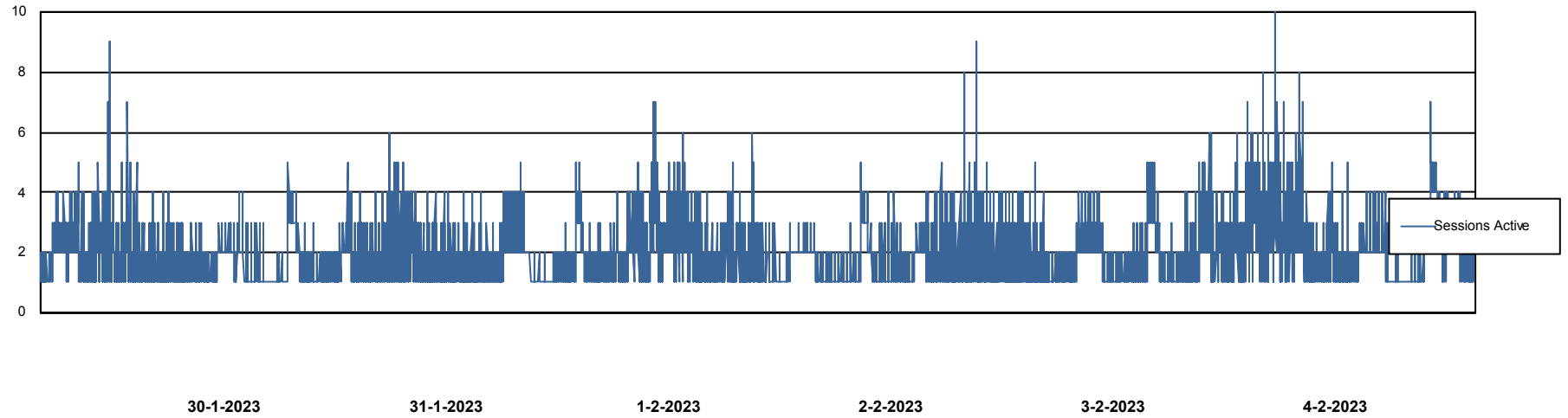
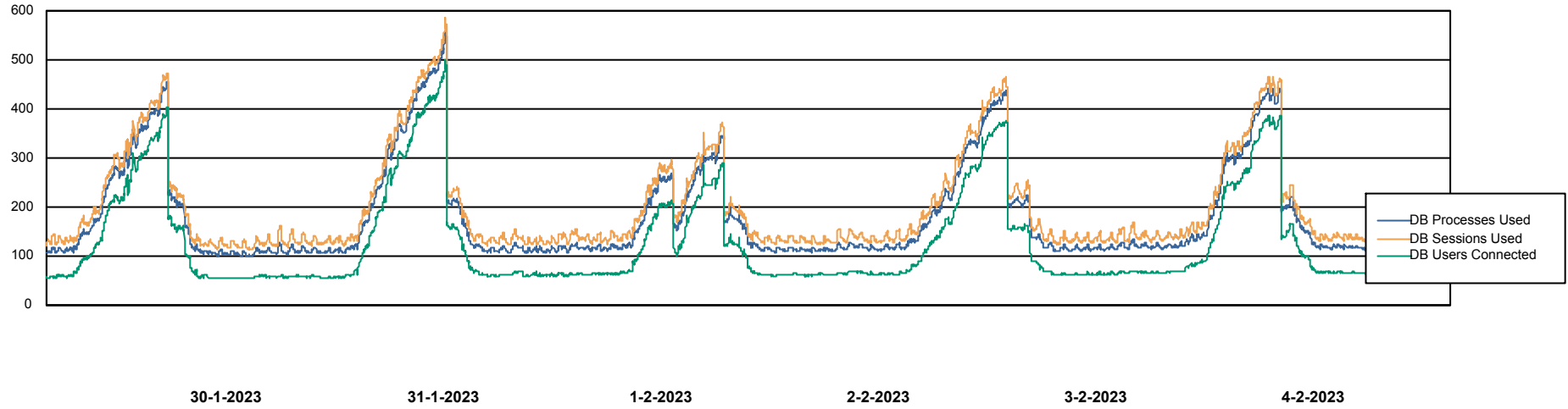


Weekly SLA Customer Report

Customer NIX_Production
Database ID 51



Database Performance NIXDB_Production



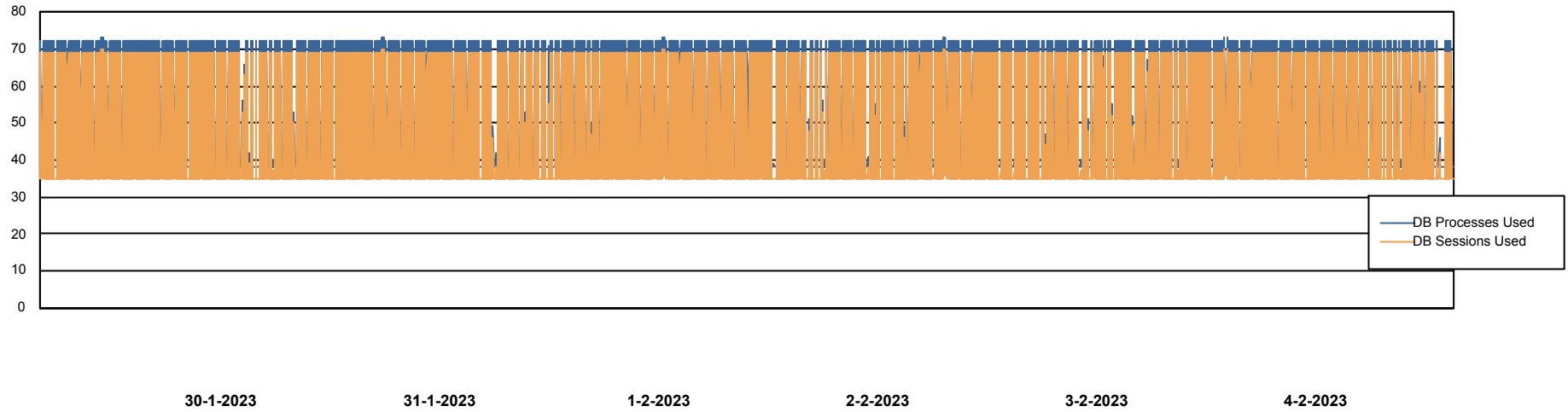
Weekly SLA Customer Report

Customer NIX_Production
Database ID 51



Database Performance NIXDB_Standby

DB Processes Max 300



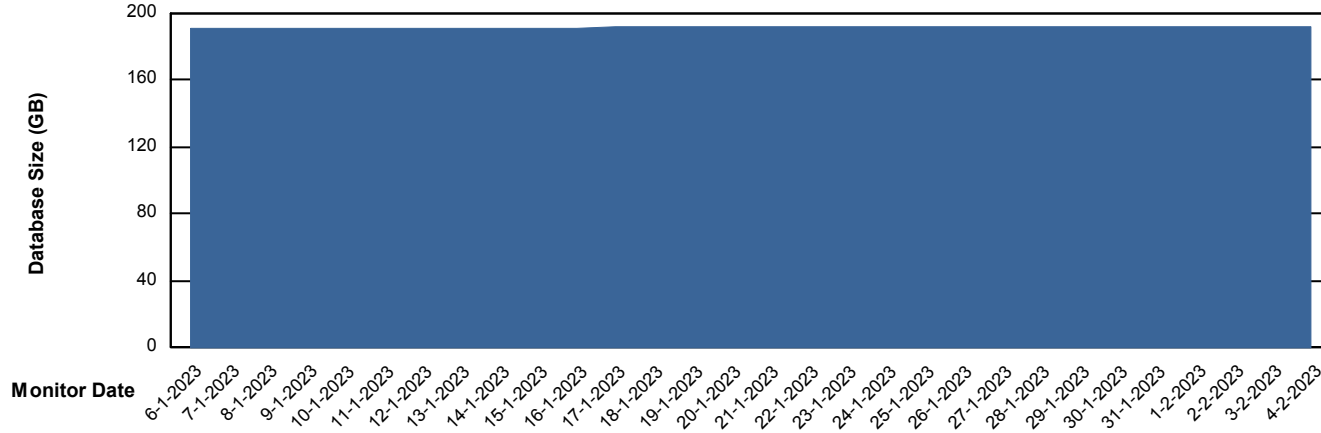
Weekly SLA Customer Report

Customer NIX_Production
Database ID 51



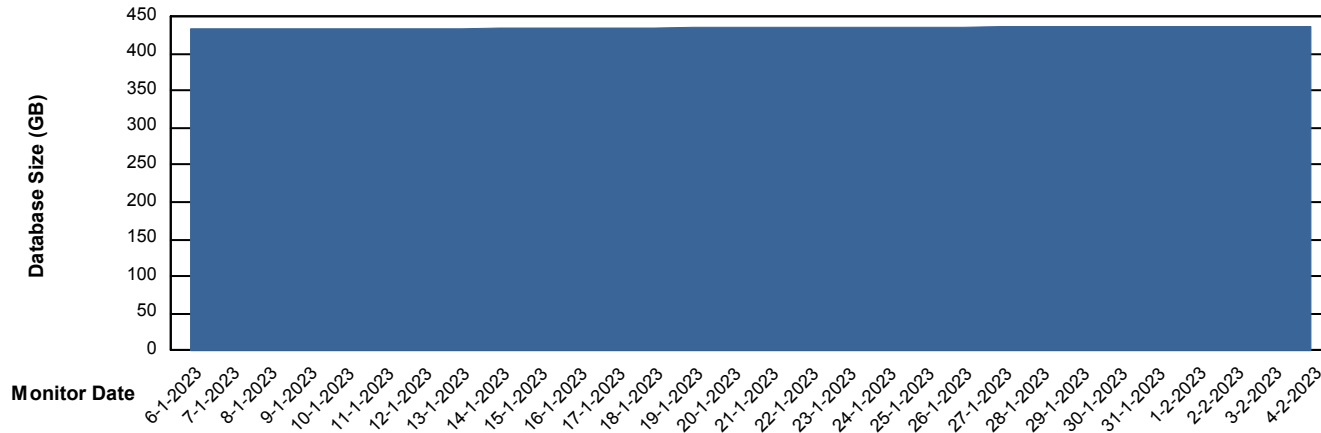
DATABASE SIZE NIXDB_BI

Database growth over last month



DATABASE SIZE NIXDB_Production

Database growth over last month



Weekly SLA Customer Report

Customer NIX_Production
Database ID 51



Database Tablespace NIXDB_BI

Date	Tablespace Name	Filesize (Gb)	Usedsize (Gb)	Percentage free
4-2-2023	ABSDATA	97	79	18
	INDX	134	111	17
3-2-2023	ABSDATA	97	79	18
	INDX	134	111	17
2-2-2023	ABSDATA	97	79	18
	INDX	134	111	17
1-2-2023	ABSDATA	97	79	18
	INDX	134	111	17
31-1-2023	ABSDATA	97	79	18
	INDX	134	111	17
30-1-2023	ABSDATA	97	79	18
	INDX	132	111	16
29-1-2023	ABSDATA	97	79	18
	INDX	132	111	16

Weekly SLA Customer Report

Customer NIX_Production
 Database ID 51



Database Tablespace NIXDB_Production

Date	Tablespace Name	Filesize (Gb)	Usedsize (Gb)	Percentage free
4-2-2023	ABSDATA	221	181	18
	INDX	276	231	16
3-2-2023	ABSDATA	221	181	18
	INDX	276	231	16
2-2-2023	ABSDATA	221	181	18
	INDX	276	231	16
1-2-2023	ABSDATA	221	181	18
	INDX	276	231	16
31-1-2023	ABSDATA	221	181	18
	INDX	276	231	16
30-1-2023	ABSDATA	221	181	18
	INDX	276	231	16
29-1-2023	ABSDATA	221	181	18
	INDX	276	231	16

BI Status and last ETL error for NIXDB_BI

	ma 30/1/2023	di 31/1/2023	wo 1/2/2023	do 2/2/2023	vr 3/2/2023	za 4/2/2023
ABS DataWarehouse ETL Health	OK	OK	OK	OK	OK	OK
ABS DWHStaging ETL Health	OK	OK	OK	OK	OK	OK

Weekly SLA Customer Report

Customer NIX_Production
Database ID 51



BI last ETL error for	NIXDB_BI
ma, 30-01-2023	None
zo, 29-01-2023	None
ma, 30-01-2023	None
do, 2-02-2023	None
za, 4-02-2023	None
wo, 1-02-2023	None
do, 2-02-2023	None
zo, 29-01-2023	None
vr, 3-02-2023	None
za, 4-02-2023	None
di, 31-01-2023	None
vr, 3-02-2023	None
di, 31-01-2023	None
wo, 1-02-2023	None

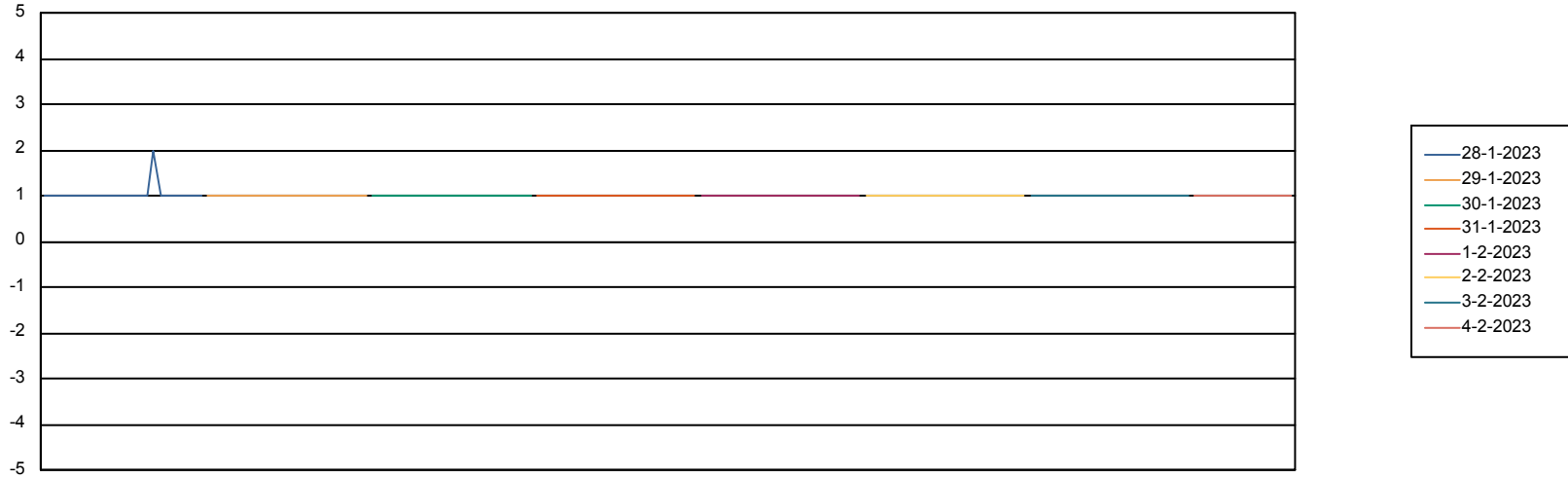
Weekly SLA Customer Report

Customer NIX_Production
Database ID 51



Standby Database Health NIX_Production

Recovery lag for last 7 days



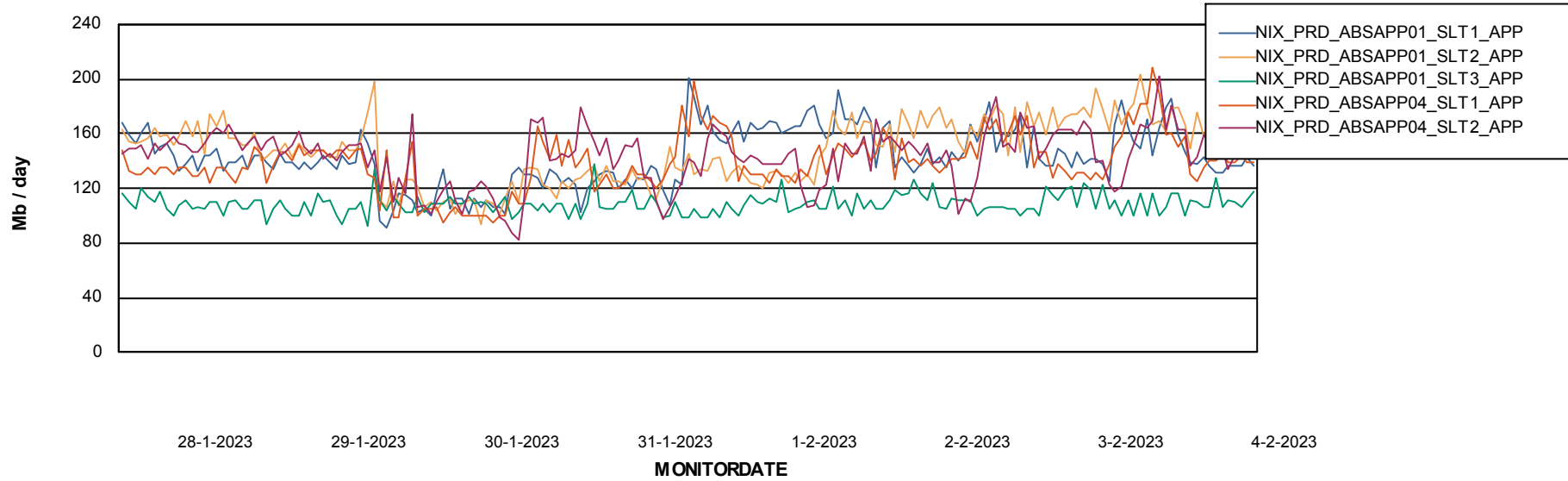
Weekly SLA Customer Report

Customer NIX_Production
Database ID 51

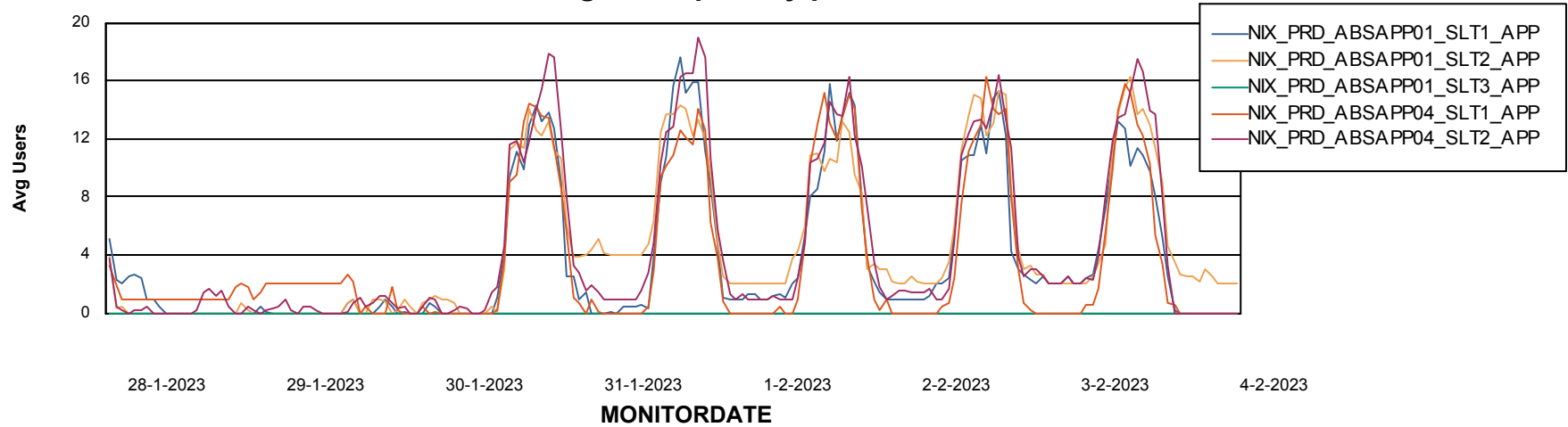


ABSSolute Application Server Services

Avg memory used per ABS Server Service



Avg users per day per ABS server



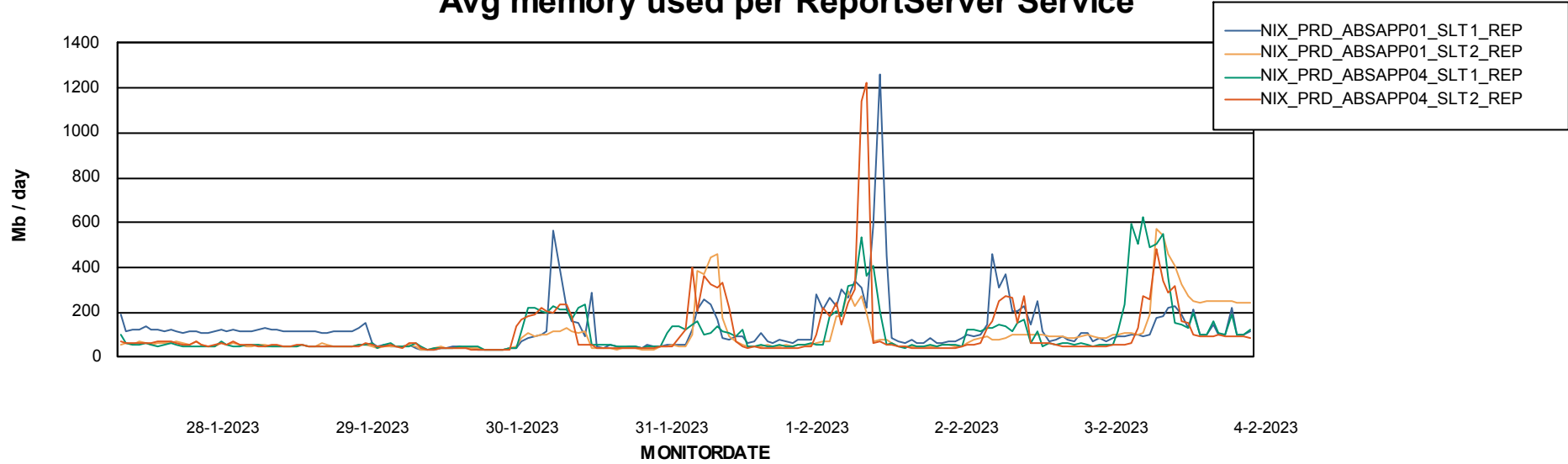
Weekly SLA Customer Report

Customer NIX_Production
Database ID 51



ABSSolute Application ReportServer Services

Avg memory used per ReportServer Service



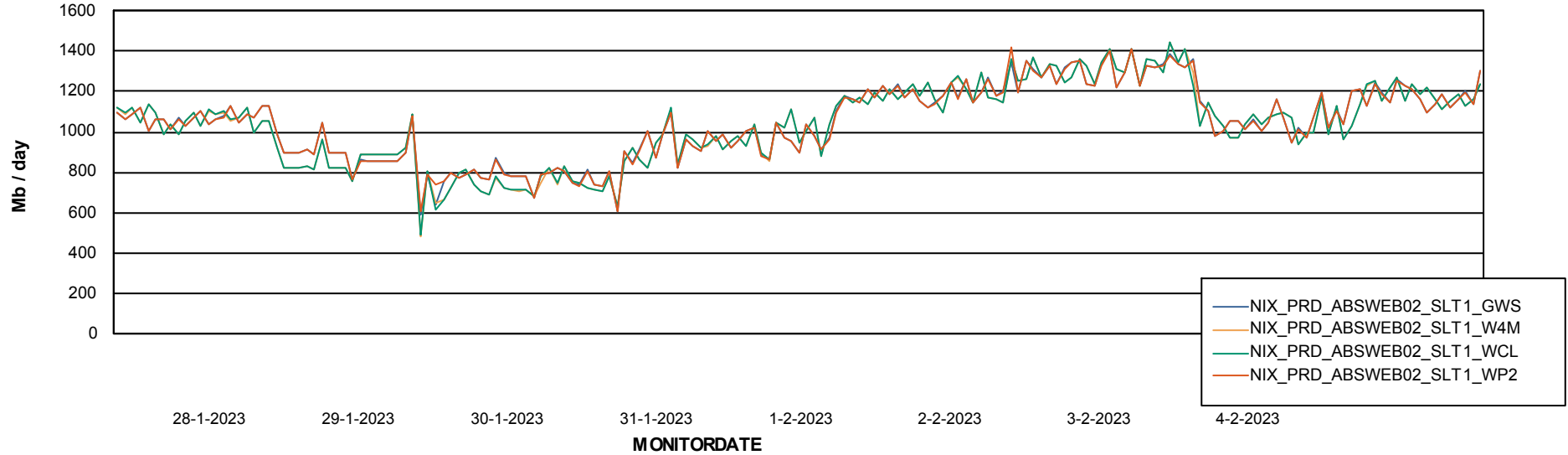
Weekly SLA Customer Report

Customer NIX_Production
Database ID 51



ABSSolute Web Component Services

Avg memory used per ABS Web component



Weekly SLA Customer Report

Customer NIX_Production
Database ID 51



Disaster per ABS component

