

Weekly SLA Customer Report

Customer NIX_Production
Database ID 51



Harddisk Usage NIX_PRD_ABSAPP01

	Free disk space on C: (%)	Total disk space on C: (Gb)	Used disk space on C: (Gb)	Free disk space on E: (%)	Total disk space on E: (Gb)	Used disk space on E: (Gb)
21-1-2023	57	207	88	100	98	0
20-1-2023	57	207	88	100	98	0
19-1-2023	57	207	88	100	98	0
18-1-2023	57	207	88	100	98	0
17-1-2023	58	207	87	100	98	0
16-1-2023	59	207	85	100	98	0
15-1-2023	59	207	84	100	98	0

Harddisk Usage NIX_PRD_ABSAPP04

	Free disk space on C: (%)	Total disk space on C: (Gb)	Used disk space on C: (Gb)
21-1-2023	36	127	80
20-1-2023	37	127	80
19-1-2023	37	127	80
18-1-2023	37	127	80
17-1-2023	37	127	80
16-1-2023	37	127	80
15-1-2023	37	127	80

Weekly SLA Customer Report

Customer NIX_Production
Database ID 51



Harddisk Usage NIX_PRD_ABSWEB02

	Free disk space on C: (%)	Total disk space on C: (Gb)	Used disk space on C: (Gb)
21-1-2023	88	300	35
20-1-2023	88	300	35
19-1-2023	88	300	35
18-1-2023	88	300	35
17-1-2023	88	300	35
16-1-2023	88	300	35
15-1-2023	88	300	35

Harddisk Usage NIX_PRD_BISRV

	Free disk space on C: (%)	Total disk space on C: (Gb)	Used disk space on C: (Gb)
21-1-2023	36	836	536
20-1-2023	36	836	533
19-1-2023	36	836	533
18-1-2023	36	836	533
17-1-2023	36	836	532
16-1-2023	36	836	533
15-1-2023	36	836	533

Weekly SLA Customer Report

Customer NIX_Production
 Database ID 51



Harddisk Usage NIX_PRD_ORCDB1

	Free disk space on C: (%)	Total disk space on C: (Gb)	Used disk space on C: (Gb)	Free disk space on D: (%)	Total disk space on D: (Gb)	Used disk space on D: (Gb)	Free disk space on E: (%)	Total disk space on E: (Gb)	Used disk space on E: (Gb)	Free disk space on F: (%)
21-1-2023	72	554	155	48	586	307	54	605	277	43
20-1-2023	72	554	155	48	586	307	54	605	277	43
19-1-2023	72	554	155	48	586	307	54	605	277	43
18-1-2023	72	554	154	48	586	307	54	605	277	43
17-1-2023	72	554	154	48	586	307	54	605	277	44
16-1-2023	72	554	154	48	586	307	54	605	277	44
15-1-2023	72	554	155	48	586	307	54	605	277	44

Harddisk Usage NIX_PRD_ORCDB2

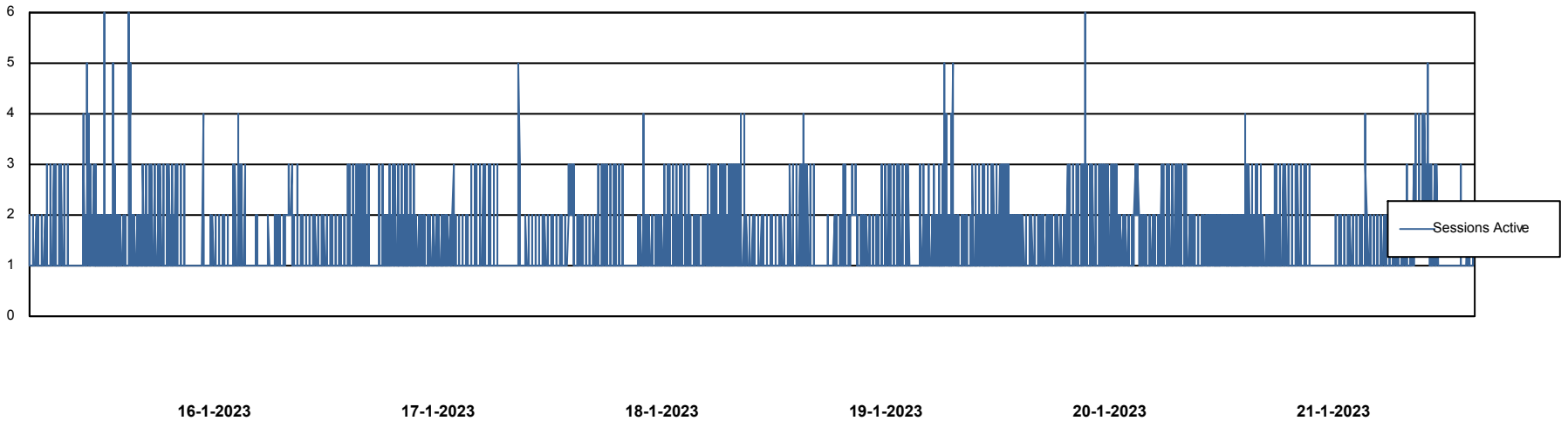
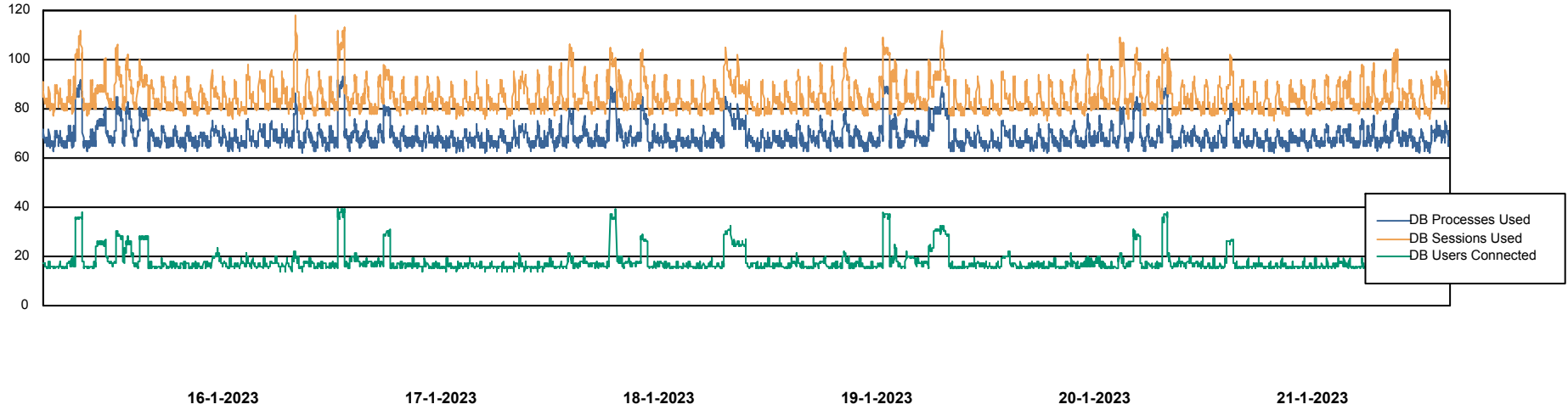
	Free disk space on C: (%)	Total disk space on C: (Gb)	Used disk space on C: (Gb)	Free disk space on D: (%)	Total disk space on D: (Gb)	Used disk space on D: (Gb)	Free disk space on E: (%)	Total disk space on E: (Gb)	Used disk space on E: (Gb)	Free disk space on F: (%)
21-1-2023	89	574	64	43	488	278	60	684	277	87
20-1-2023	89	574	64	43	488	278	60	684	276	88
19-1-2023	89	574	64	43	488	278	60	684	276	88
18-1-2023	89	574	64	43	488	278	60	684	277	88
17-1-2023	89	574	64	43	488	278	60	684	277	88
16-1-2023	89	574	63	43	488	278	60	684	276	88
15-1-2023	89	574	63	43	488	278	60	684	276	88

Weekly SLA Customer Report

Customer NIX_Production
Database ID 51



Database Performance NIXDB_BI

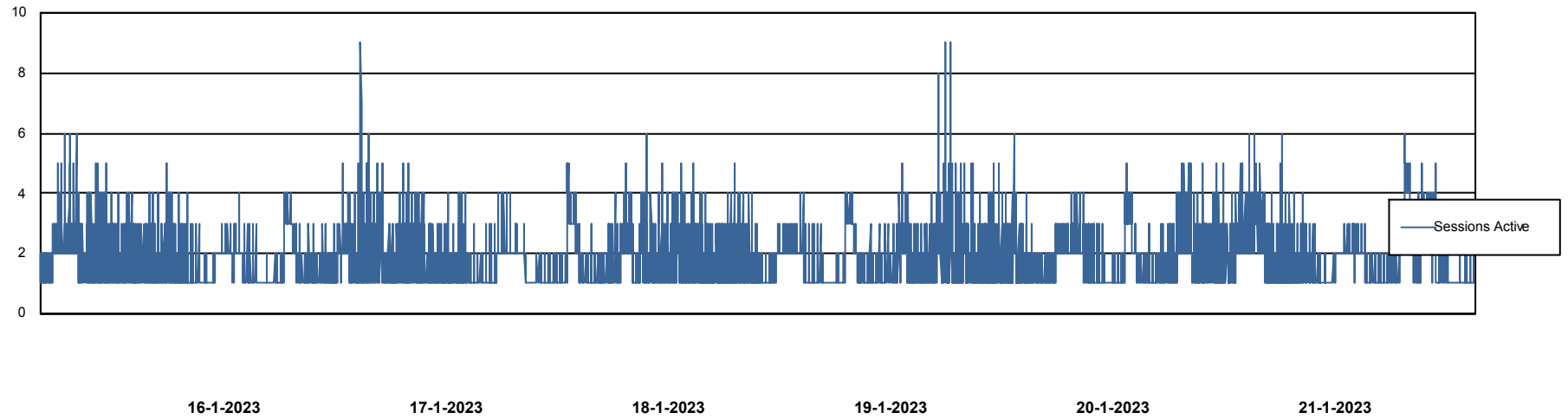
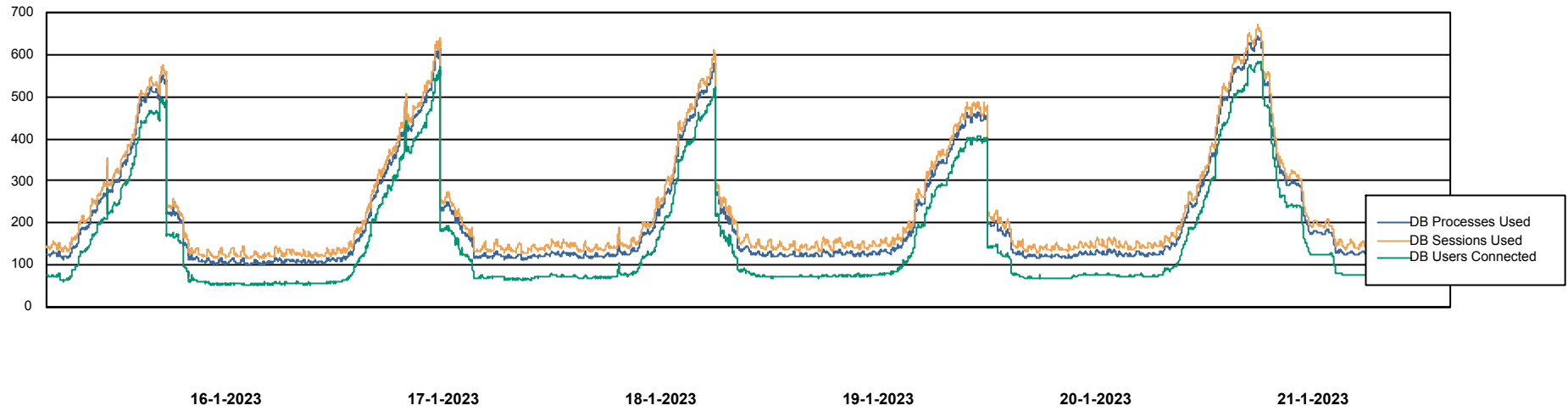


Weekly SLA Customer Report

Customer NIX_Production
Database ID 51



Database Performance NIXDB_Production



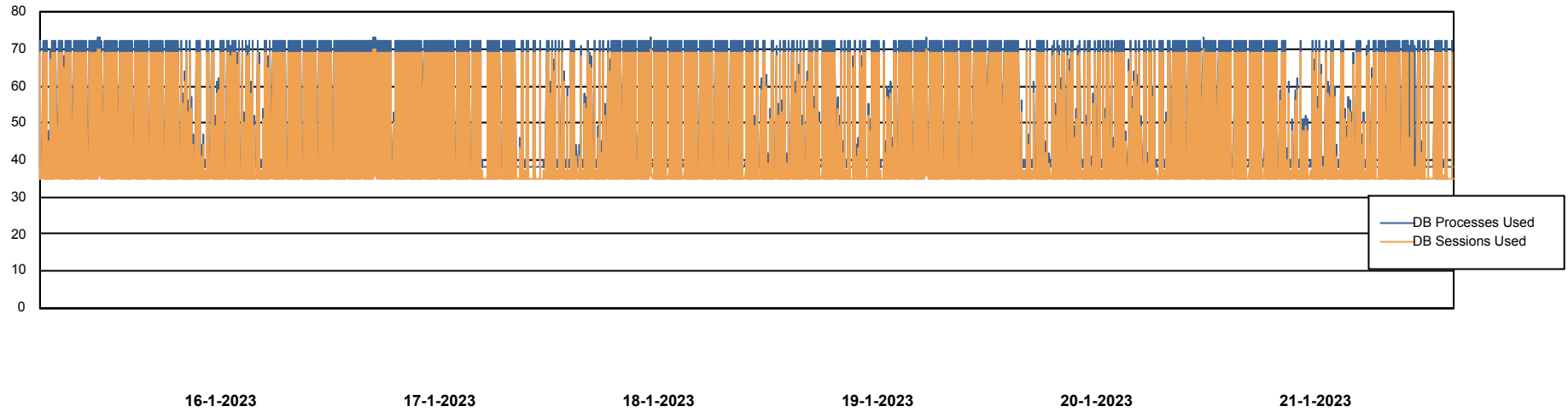
Weekly SLA Customer Report

Customer NIX_Production
Database ID 51



Database Performance NIXDB_Standby

DB Processes Max 300



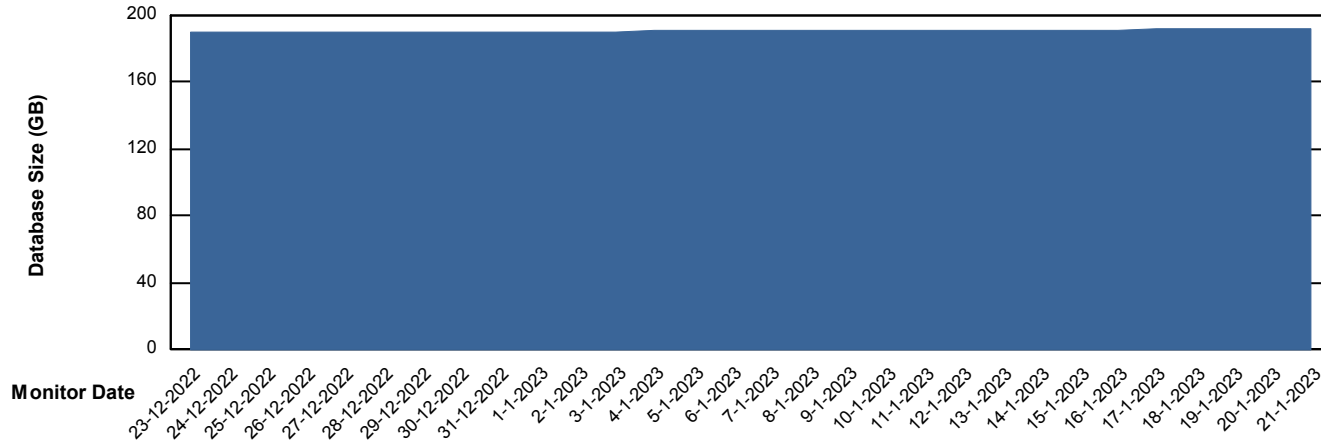
Weekly SLA Customer Report

Customer NIX_Production
Database ID 51



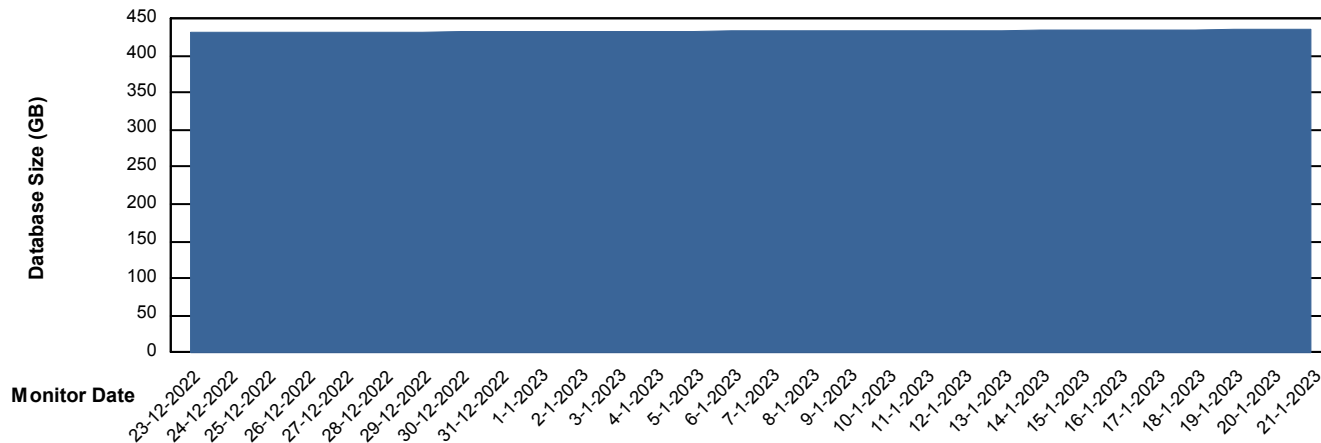
DATABASE SIZE NIXDB_BI

Database growth over last month



DATABASE SIZE NIXDB_Production

Database growth over last month



Weekly SLA Customer Report

Customer NIX_Production
 Database ID 51



Database Tablespace NIXDB_BI

Date	Tablespace Name	Filesize (Gb)	Usedsize (Gb)	Percentage free
21-1-2023	ABSDATA	97	79	19
	INDX	132	111	16
20-1-2023	ABSDATA	97	79	19
	INDX	132	111	16
19-1-2023	ABSDATA	97	79	19
	INDX	132	111	16
18-1-2023	ABSDATA	97	79	19
	INDX	132	111	16
17-1-2023	ABSDATA	97	79	19
	INDX	132	110	16
16-1-2023	ABSDATA	97	79	19
	INDX	132	110	16
15-1-2023	ABSDATA	97	79	19
	INDX	132	110	16

Weekly SLA Customer Report

Customer NIX_Production
 Database ID 51



Database Tablespace NIXDB_Production

Date	Tablespace Name	Filesize (Gb)	Usedsize (Gb)	Percentage free
21-1-2023	ABSDATA	221	181	18
	INDX	276	230	17
20-1-2023	ABSDATA	221	181	18
	INDX	276	230	17
19-1-2023	ABSDATA	221	181	18
	INDX	276	230	17
18-1-2023	ABSDATA	221	181	18
	INDX	276	230	17
17-1-2023	ABSDATA	221	181	18
	INDX	276	230	17
16-1-2023	ABSDATA	221	181	18
	INDX	276	230	17
15-1-2023	ABSDATA	221	181	18
	INDX	276	229	17

BI Status and last ETL error for NIXDB_BI

	ma 16/1/2023	di 17/1/2023	wo 18/1/2023	do 19/1/2023	vr 20/1/2023	za 21/1/2023
ABS DataWarehouse ETL Health	OK	OK	OK	OK	OK	OK
ABS DWHStaging ETL Health	OK	OK	OK	OK	OK	OK

Weekly SLA Customer Report

Customer NIX_Production
Database ID 51



BI last ETL error for	NIXDB_BI
zo, 15-01-2023	None
ma, 16-01-2023	None
do, 19-01-2023	None
za, 21-01-2023	None
vr, 20-01-2023	None
do, 19-01-2023	None
vr, 20-01-2023	None
di, 17-01-2023	None
di, 17-01-2023	None
wo, 18-01-2023	None
zo, 15-01-2023	None
ma, 16-01-2023	None
wo, 18-01-2023	None
za, 21-01-2023	None

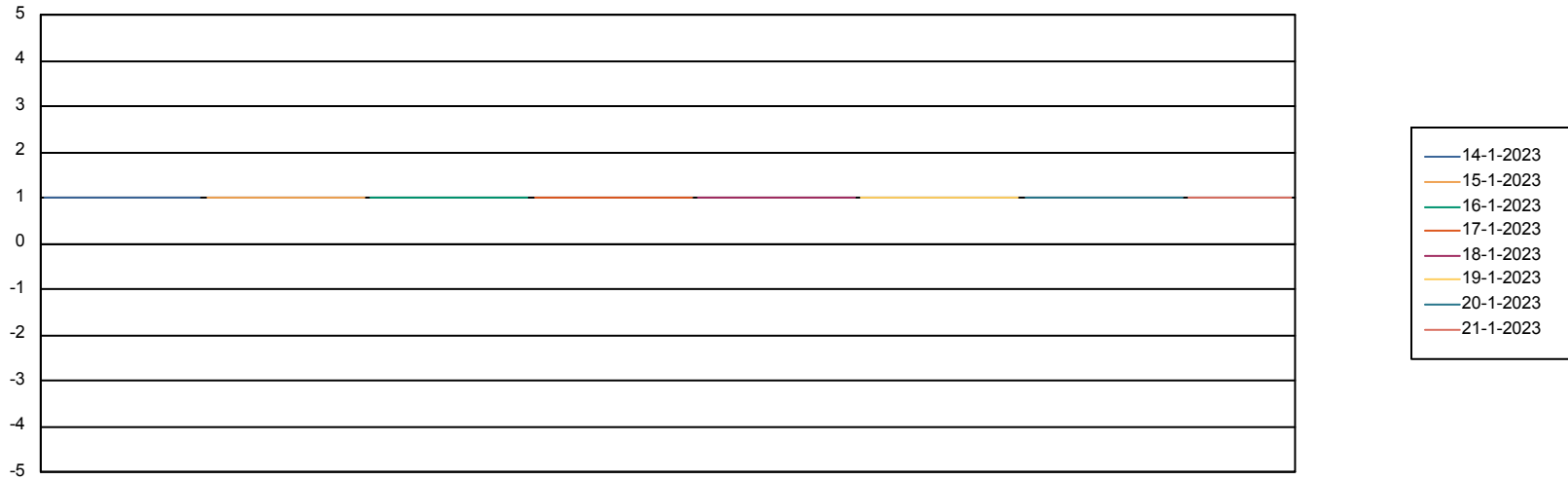
Weekly SLA Customer Report

Customer NIX_Production
Database ID 51



Standby Database Health NIX_Production

Recovery lag for last 7 days



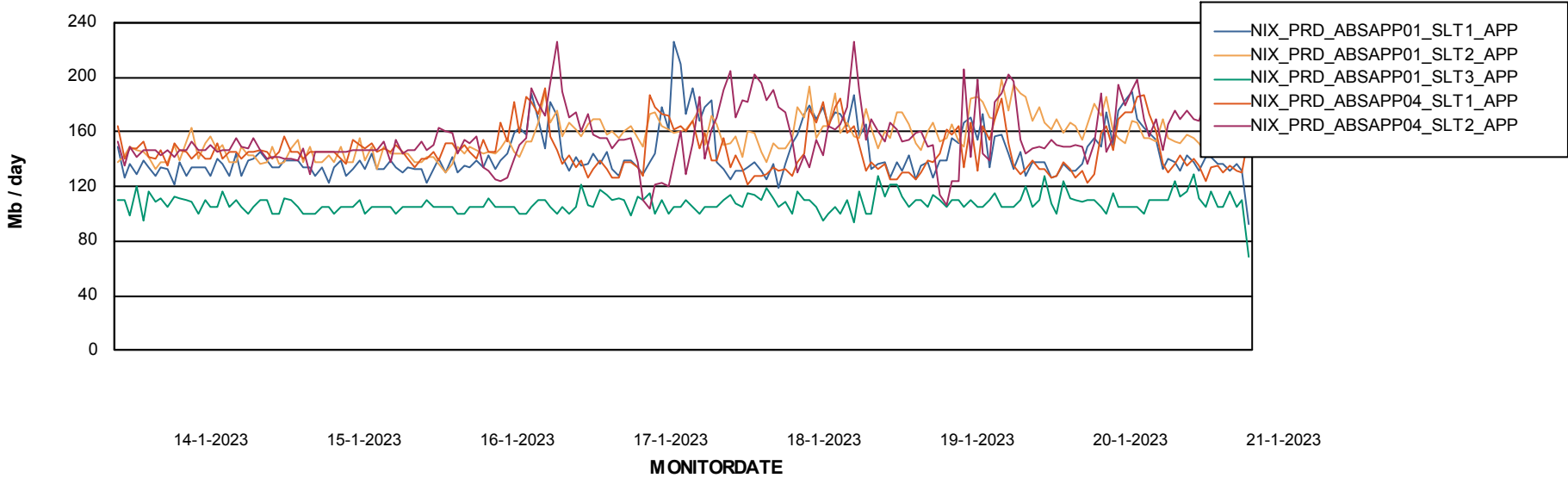
Weekly SLA Customer Report

Customer NIX_Production
Database ID 51

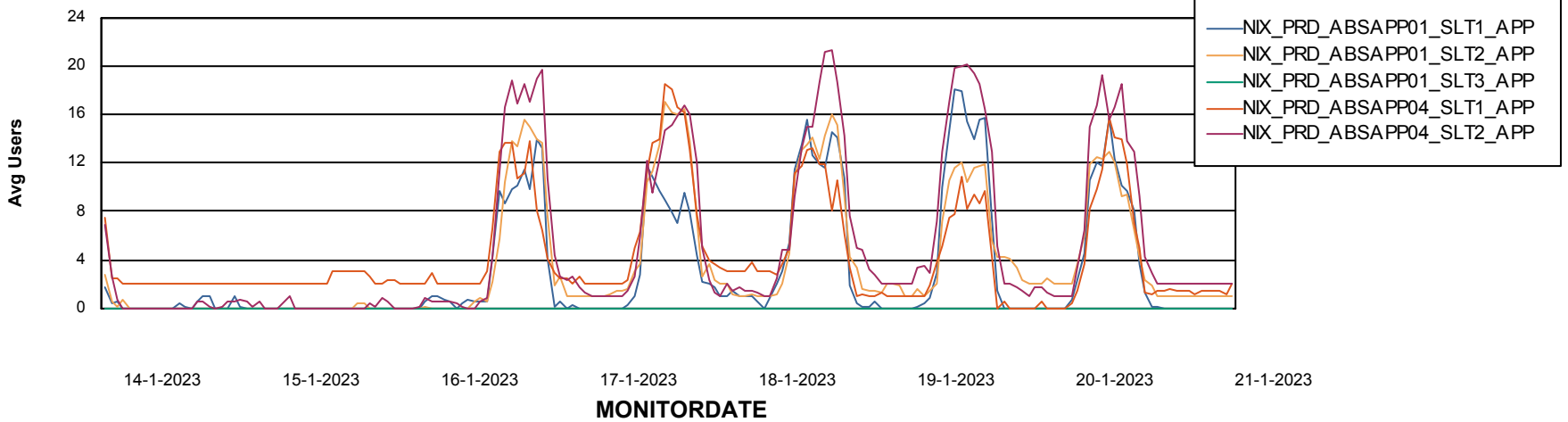


ABSSolute Application Server Services

Avg memory used per ABS Server Service



Avg users per day per ABS server



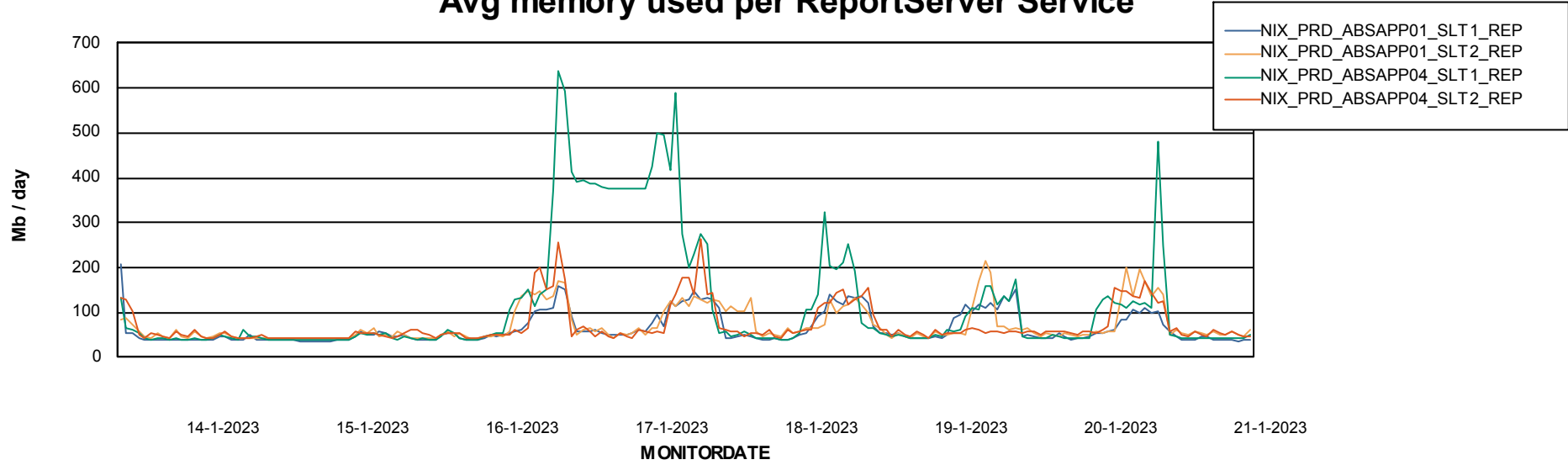
Weekly SLA Customer Report

Customer NIX_Production
Database ID 51



ABSSolute Application ReportServer Services

Avg memory used per ReportServer Service



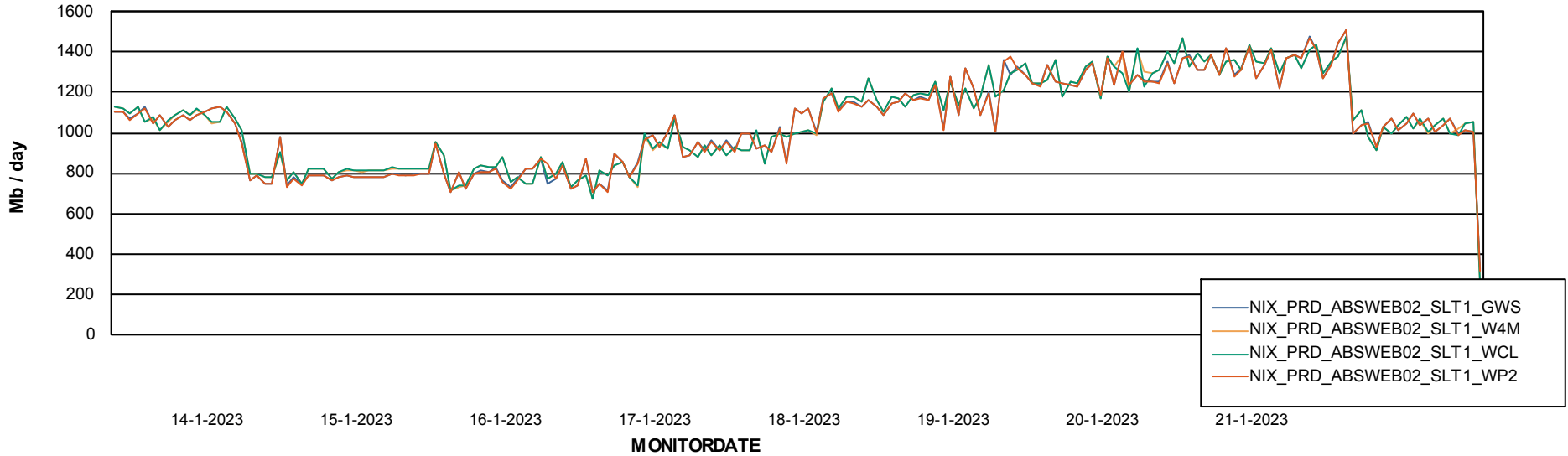
Weekly SLA Customer Report

Customer NIX_Production
Database ID 51



ABSSolute Web Component Services

Avg memory used per ABS Web component



Weekly SLA Customer Report

Customer NIX_Production
Database ID 51



Disaster per ABS component

