

# Weekly SLA Customer Report

Customer KLH\_Production  
 Database ID 139



Harddisk Usage KLH\_PRD\_SRSAPP01

	Free disk space on / (%)	Total disk space on / (Gb)	Used disk space on / (Gb)	Free disk space on /abs (%)	Total disk space on /abs (Gb)	Used disk space on /abs (Gb)
7-1-2023	78	50	11	51	50	24
6-1-2023	78	50	11	51	50	25
5-1-2023	78	50	11	51	50	24
4-1-2023	78	50	11	51	50	24
3-1-2023	78	50	11	51	50	24
2-1-2023	78	50	11	52	50	24
1-1-2023	78	50	11	52	50	24

Harddisk Usage KLH\_PRD\_SRSAPP02

	Free disk space on / (%)	Total disk space on / (Gb)	Used disk space on / (Gb)	Free disk space on /abs (%)	Total disk space on /abs (Gb)	Used disk space on /abs (Gb)
7-1-2023	79	50	11	38	50	31
6-1-2023	79	50	11	38	50	31
5-1-2023	79	50	11	38	50	31
4-1-2023	79	50	11	38	50	31
3-1-2023	79	50	11	38	50	31
2-1-2023	79	50	11	39	50	31
1-1-2023	79	50	11	39	50	31

# Weekly SLA Customer Report

Customer KLH\_Production  
 Database ID 139



Harddisk Usage KLH\_PRD\_SRSBI01

	Free disk space on / (%)	Total disk space on / (Gb)	Used disk space on / (Gb)	Free disk space on /abs/dumpf	Total disk space on /abs/dumpf	Used disk space on /abs/dumpf	Free disk space on /u01 (%)	Total disk space on /u01 (Gb)	Used disk space on /u01 (Gb)
7-1-2023	45	50	28	50	400	200	64	50	18
6-1-2023	45	50	28	55	400	180	64	50	18
5-1-2023	45	50	27	53	400	187	64	50	18
4-1-2023	45	50	27	50	400	199	64	50	18
3-1-2023	45	50	27	55	400	181	64	50	18
2-1-2023	45	50	27	52	400	194	64	50	18
1-1-2023	45	50	27	54	400	183	64	50	18

Harddisk Usage KLH\_PRD\_SRSBIDB01

	Free disk space on / (%)	Total disk space on / (Gb)	Used disk space on / (Gb)	Free disk space on /abs/dumpf	Total disk space on /abs/dumpf	Used disk space on /abs/dumpf	Free disk space on /u01 (%)	Total disk space on /u01 (Gb)	Used disk space on /u01 (Gb)
7-1-2023	75	100	25	50	400	200	68	400	128
6-1-2023	75	100	25	55	400	180	68	400	128
5-1-2023	75	100	25	53	400	187	68	400	128
4-1-2023	75	100	25	50	400	199	68	400	128
3-1-2023	75	100	25	55	400	181	68	400	127
2-1-2023	75	100	25	52	400	194	68	400	128
1-1-2023	75	100	25	54	400	183	67	400	131

# Weekly SLA Customer Report

Customer KLH\_Production  
 Database ID 139



Harddisk Usage KLH\_PRD\_SRSDDB01

	Free disk space on / (%)	Total disk space on / (Gb)	Used disk space on / (Gb)	Free disk space on /abs/dumpf	Total disk space on /abs/dumpf	Used disk space on /abs/dumpf	Free disk space on /u01 (%)	Total disk space on /u01 (Gb)	Used disk space on /u01 (Gb)
7-1-2023	74	100	26	50	400	200	42	400	231
6-1-2023	74	100	26	55	400	180	43	400	226
5-1-2023	74	100	26	53	400	187	44	400	225
4-1-2023	74	100	26	50	400	199	43	400	228
3-1-2023	74	100	26	55	400	181	44	400	224
2-1-2023	74	100	26	52	400	194	44	400	224
1-1-2023	74	100	26	54	400	183	45	400	221

Harddisk Usage KLH\_PRD\_SRSDDB02

	Free disk space on / (%)	Total disk space on / (Gb)	Used disk space on / (Gb)	Free disk space on /abs/dumpf	Total disk space on /abs/dumpf	Used disk space on /abs/dumpf	Free disk space on /u01 (%)	Total disk space on /u01 (Gb)	Used disk space on /u01 (Gb)
7-1-2023	74	100	26	50	400	200	41	400	237
6-1-2023	74	100	26	55	400	180	40	400	238
5-1-2023	74	100	26	53	400	187	41	400	236
4-1-2023	74	100	26	50	400	199	41	400	234
3-1-2023	74	100	26	55	400	181	41	400	236
2-1-2023	74	100	26	52	400	194	42	400	233
1-1-2023	74	100	26	54	400	183	42	400	230

# Weekly SLA Customer Report

Customer KLH\_Production  
 Database ID 139



Harddisk Usage KLH\_PRD\_SRSNFS01

	Free disk space on / (%)	Total disk space on / (Gb)	Used disk space on / (Gb)	Free disk space on /var/nfs/ex	Total disk space on /var/nfs/ex	Used disk space on /var/nfs/ex	Free disk space on /var/nfs/ora	Total disk space on /var/nfs/ora	Used disk space on /var/nfs/ora
7-1-2023	65	30	10	63	50	19	50	400	200
6-1-2023	65	30	10	63	50	19	55	400	180
5-1-2023	65	30	10	63	50	18	53	400	187
4-1-2023	65	30	10	63	50	18	50	400	199
3-1-2023	65	30	10	64	50	18	55	400	181
2-1-2023	65	30	10	66	50	17	52	400	194
1-1-2023	65	30	10	66	50	17	54	400	183

Harddisk Usage KLH\_PRD\_SRSSUPPORT01\_DISTRIB

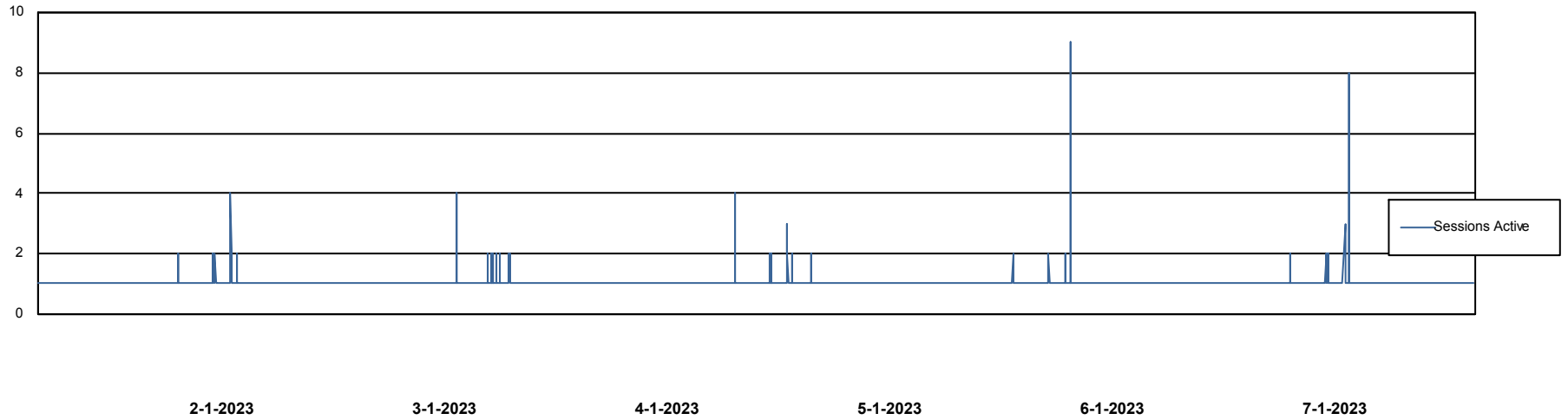
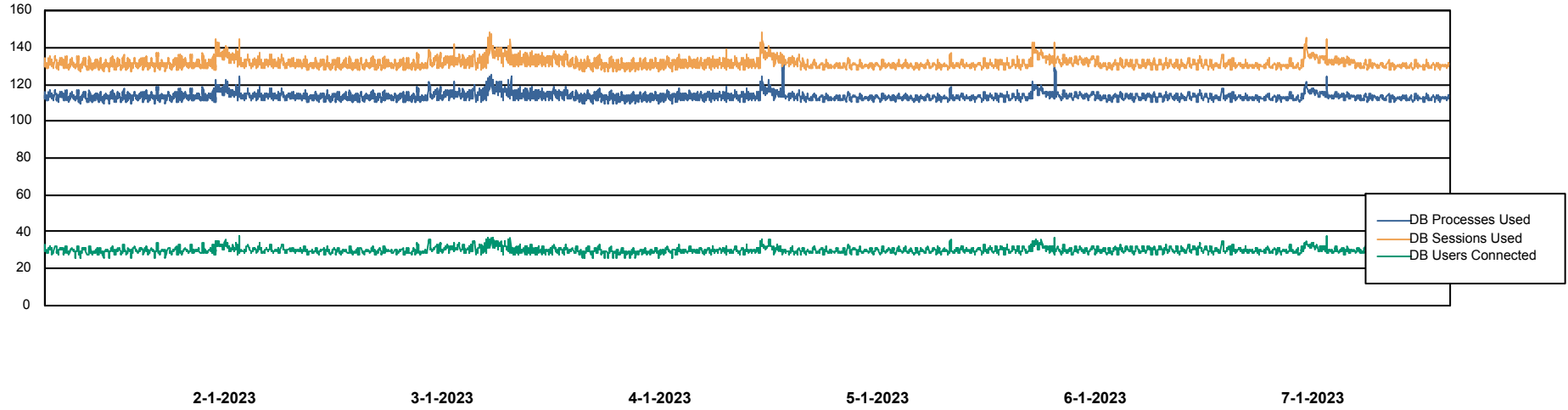
	Free disk space on C: (%)	Total disk space on C: (Gb)	Used disk space on C: (Gb)
7-1-2023	64	100	36
6-1-2023	64	100	36
5-1-2023	64	100	36
4-1-2023	65	100	35
3-1-2023	65	100	35
2-1-2023	65	100	35
1-1-2023	65	100	35

# Weekly SLA Customer Report

Customer KLH\_Production  
Database ID 139



## Database Performance KLHDB\_BI

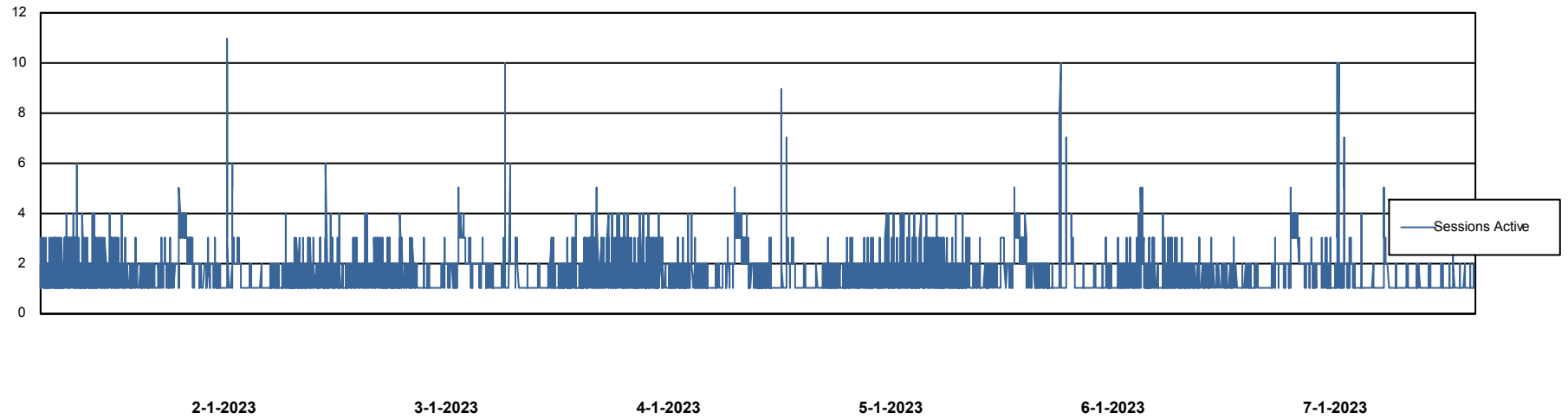
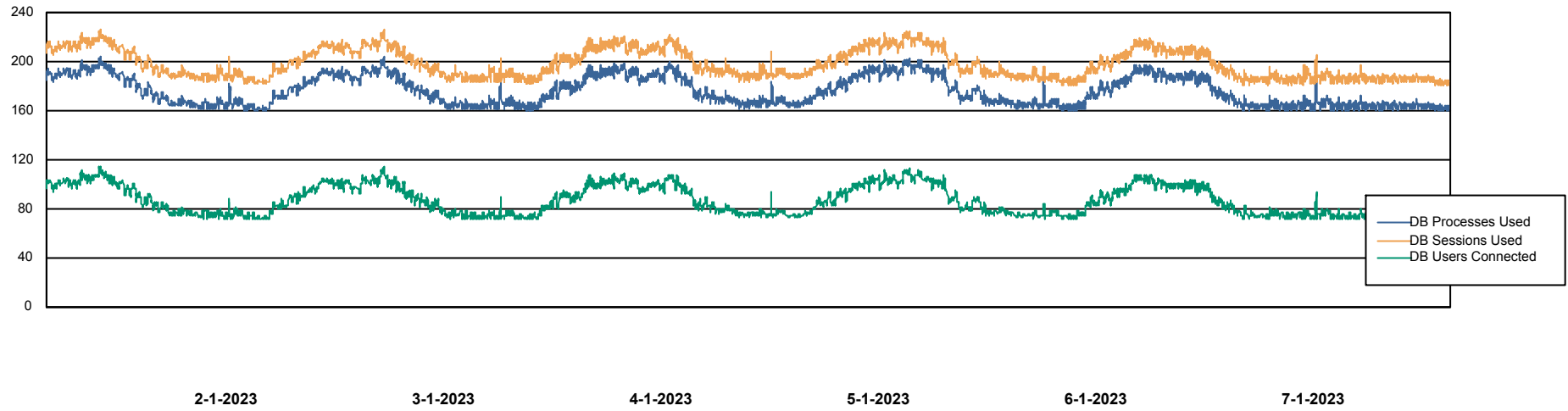


# Weekly SLA Customer Report

Customer KLH\_Production  
Database ID 139



## Database Performance KLHDB\_Production



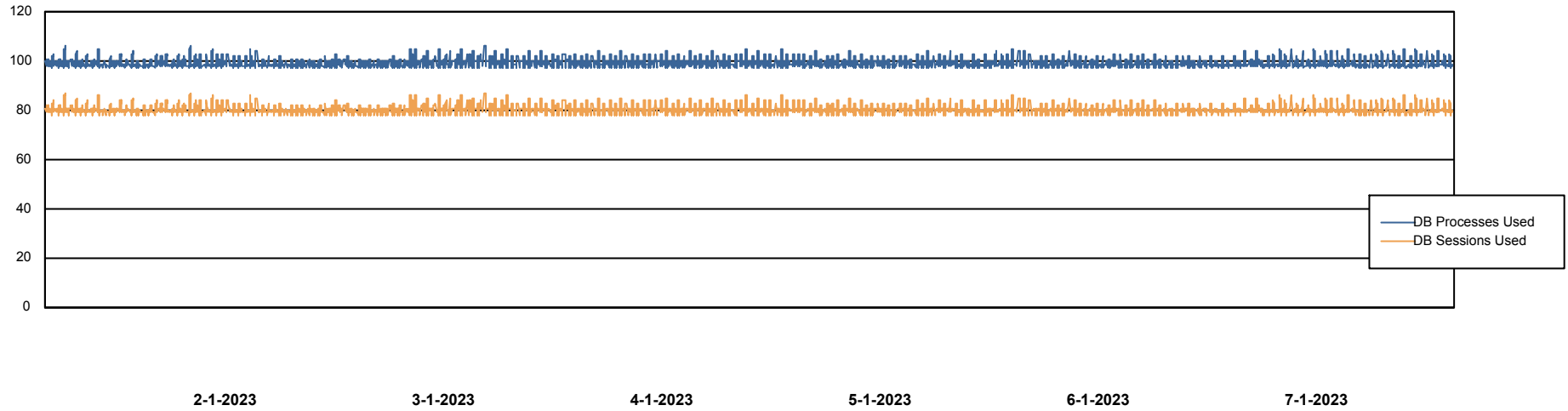
# Weekly SLA Customer Report

Customer KLH\_Production  
Database ID 139



## Database Performance KLHDB\_Standby

DB Processes Max 4  
DB Processes Max 1,000  
DB Processes Max 0



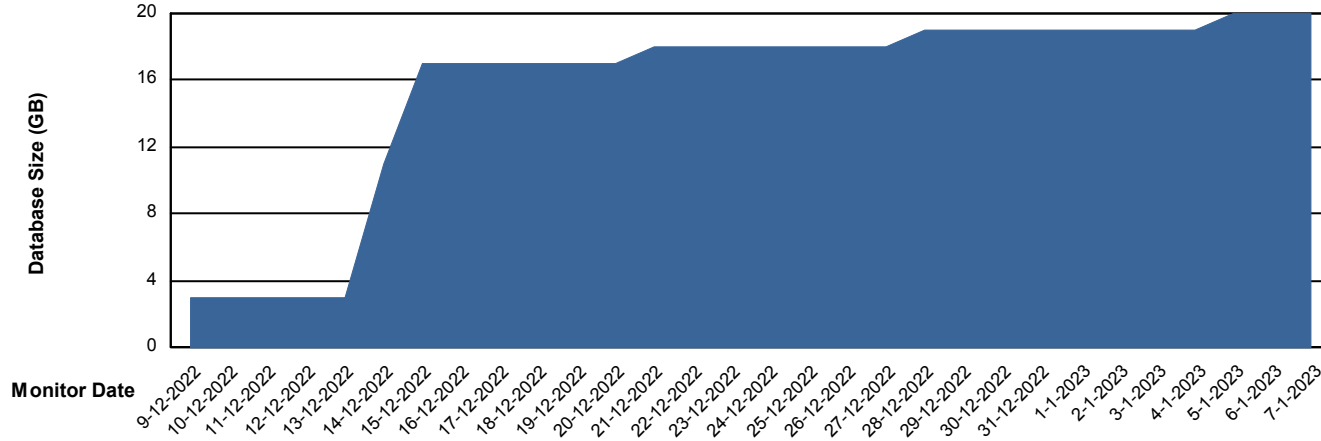
# Weekly SLA Customer Report

Customer KLH\_Production  
Database ID 139



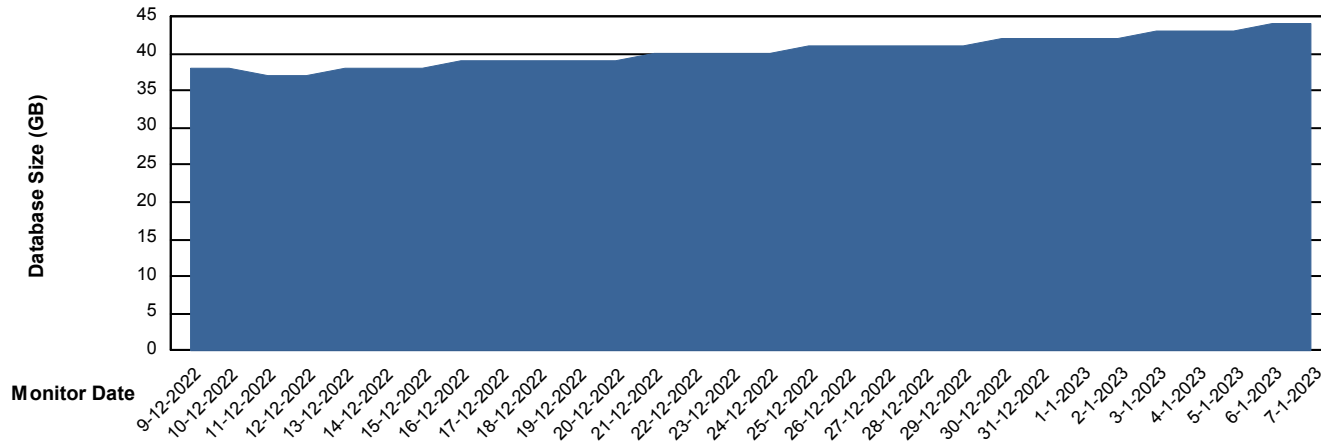
DATABASE SIZE KLHDB\_BI

### Database growth over last month



DATABASE SIZE KLHDB\_Production

### Database growth over last month



# Weekly SLA Customer Report

Customer KLH\_Production  
 Database ID 139



Database Tablespace KLHDB\_BI

Date	Tablespace Name	Filesize (Gb)	Usedsize (Gb)	Percentage free
7-1-2023	ABSDATA	20	8	62
	INDX	20	10	52
6-1-2023	ABSDATA	20	8	62
	INDX	20	10	52
5-1-2023	ABSDATA	20	8	62
	INDX	20	9	53
4-1-2023	ABSDATA	20	8	62
	INDX	20	9	53
3-1-2023	ABSDATA	20	8	62
	INDX	20	9	53
2-1-2023	ABSDATA	20	7	63
	INDX	20	9	54
1-1-2023	ABSDATA	20	7	63
	INDX	20	9	54

# Weekly SLA Customer Report

Customer KLH\_Production  
 Database ID 139



Database Tablespace KLHDB\_Production

Date	Tablespace Name	Filesize (Gb)	Usedsize (Gb)	Percentage free
7-1-2023	ABSDATA	60	33	45
	INDX	8	0	96
6-1-2023	ABSDATA	60	33	45
	INDX	8	0	96
5-1-2023	ABSDATA	60	33	46
	INDX	8	0	96
4-1-2023	ABSDATA	60	32	46
	INDX	8	0	96
3-1-2023	ABSDATA	60	32	46
	INDX	8	0	96
2-1-2023	ABSDATA	60	32	47
	INDX	8	0	96
1-1-2023	ABSDATA	60	31	48
	INDX	8	0	96

BI Status and last ETL error for KLHDB\_BI

	ma 2/1/2023	di 3/1/2023	wo 4/1/2023	do 5/1/2023	vr 6/1/2023	za 7/1/2023
<b>ABS DataWarehouse ETL Health</b>	OK	OK	OK	OK	OK	OK
<b>ABS DWHStaging ETL Health</b>	OK	OK	OK	OK	OK	OK

# Weekly SLA Customer Report

Customer KLH\_Production  
Database ID 139



BI last ETL error for	KLHDB_BI
vr, 6-01-2023	None
ma, 2-01-2023	None
za, 7-01-2023	None
wo, 4-01-2023	None
ma, 2-01-2023	None
di, 3-01-2023	None
vr, 6-01-2023	None
zo, 1-01-2023	None
di, 3-01-2023	None
do, 5-01-2023	None
wo, 4-01-2023	None
do, 5-01-2023	None
zo, 1-01-2023	None
za, 7-01-2023	None

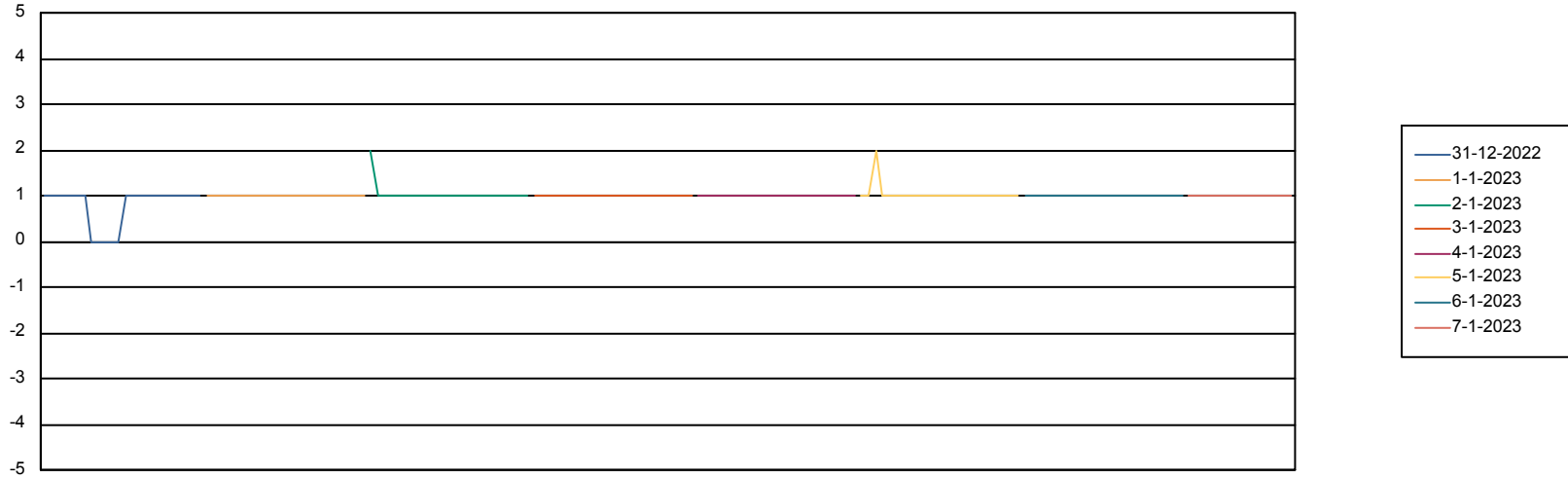
# Weekly SLA Customer Report

Customer KLH\_Production  
Database ID 139



Standby Database Health      KLH\_Production

## Recovery lag for last 7 days



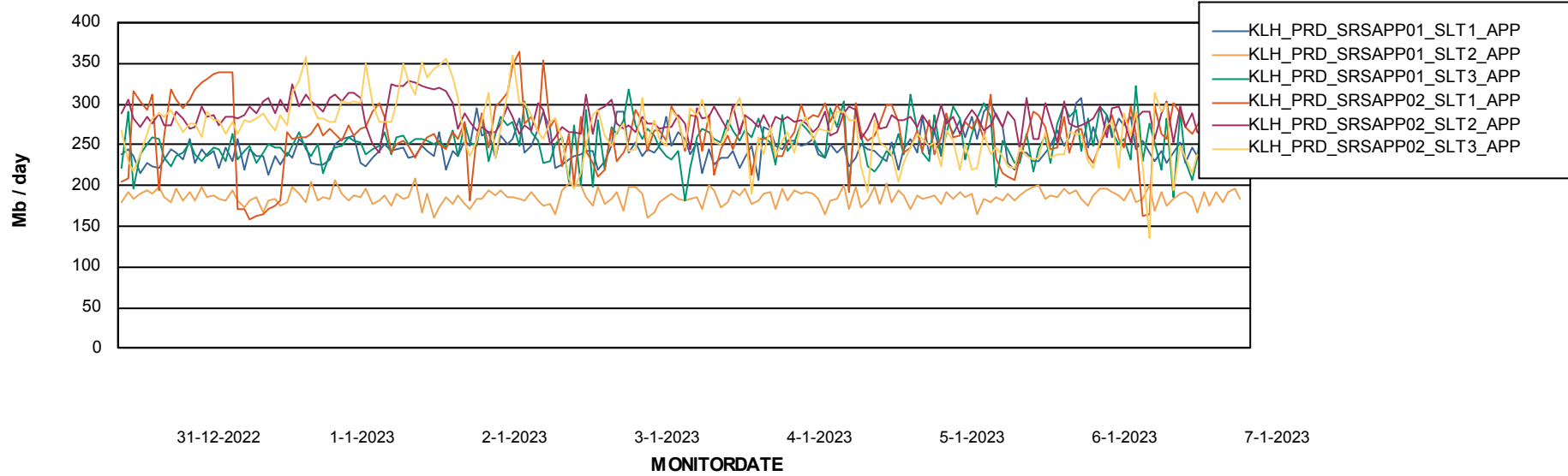
# Weekly SLA Customer Report

Customer KLH\_Production  
Database ID 139

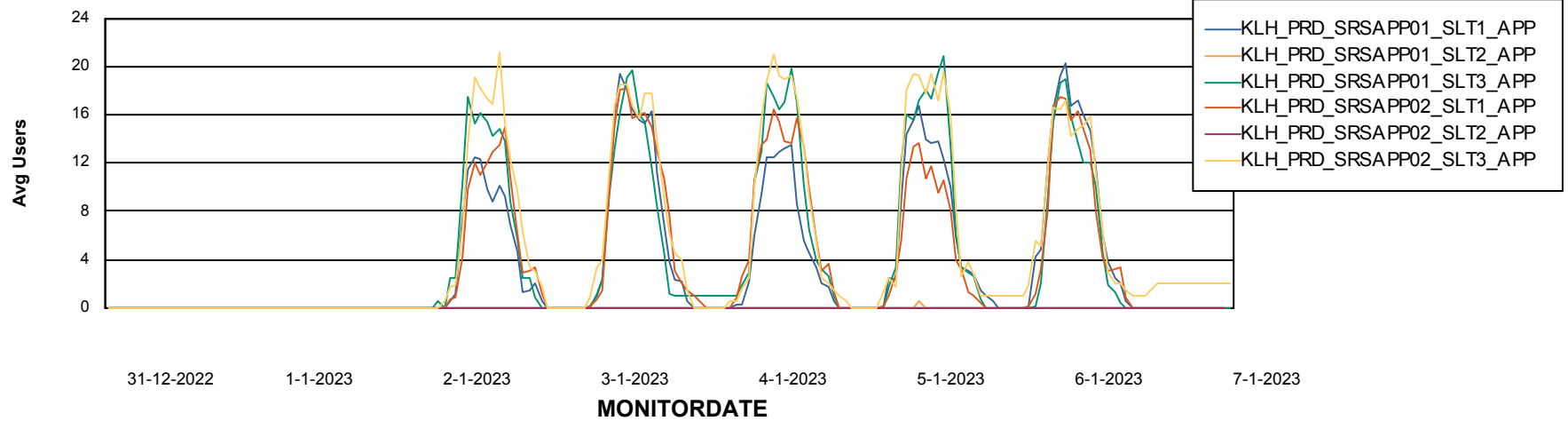


## ABSSolute Application Server Services

### Avg memory used per ABS Server Service



### Avg users per day per ABS server



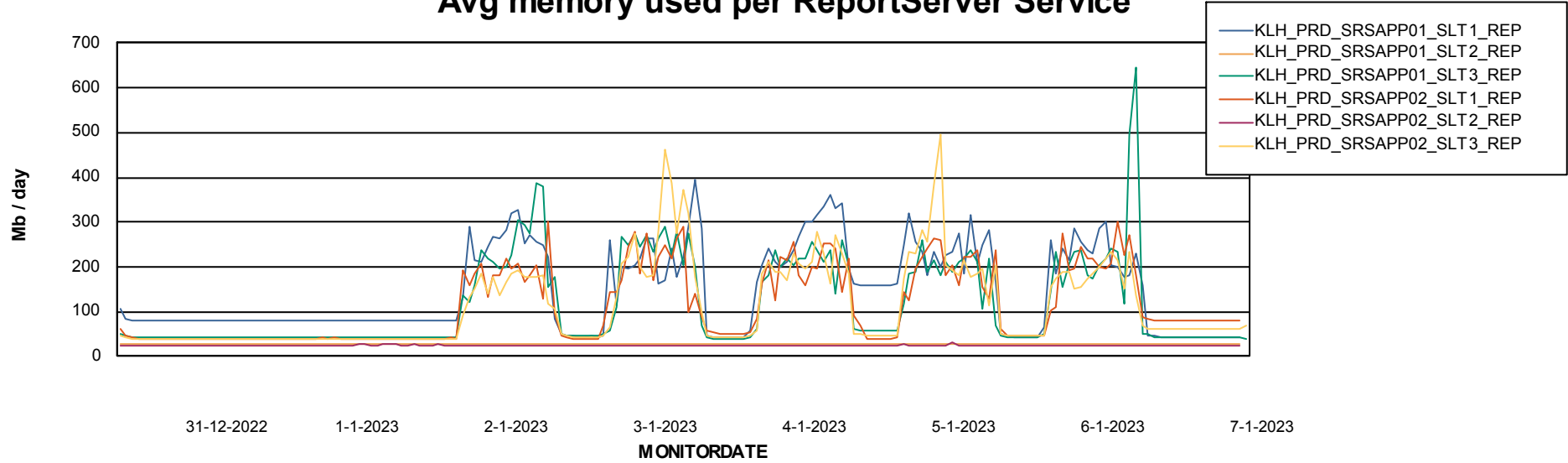
# Weekly SLA Customer Report

Customer KLH\_Production  
Database ID 139



## ABSSolute Application ReportServer Services

### Avg memory used per ReportServer Service



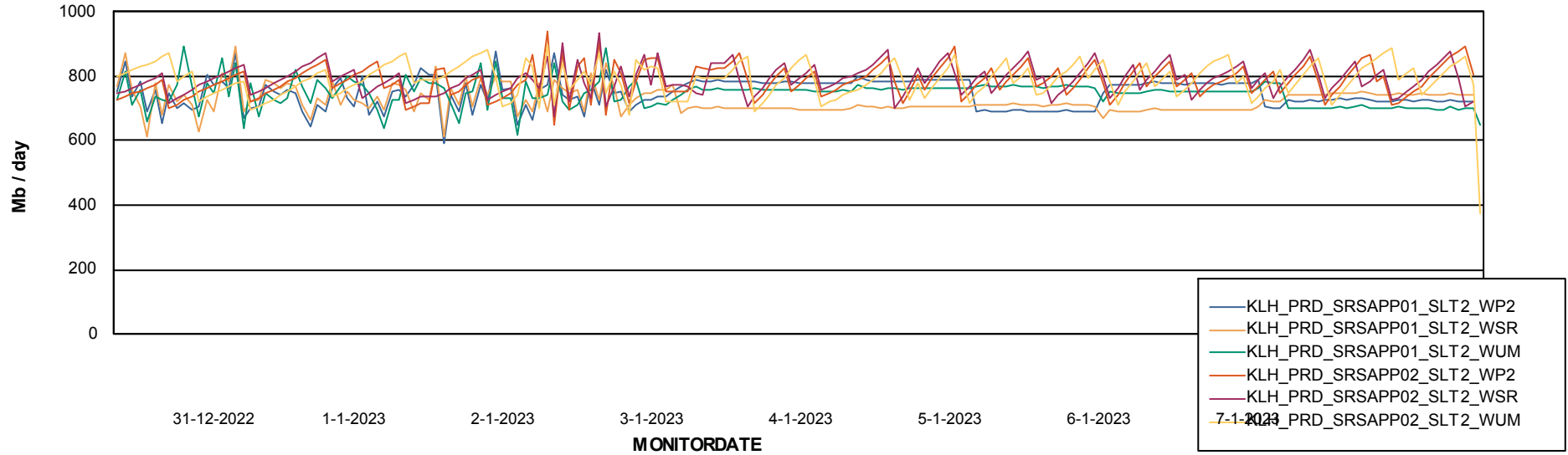
# Weekly SLA Customer Report

Customer KLH\_Production  
Database ID 139



## ABSolute Web Component Services

### Avg memory used per ABS Web component



# Weekly SLA Customer Report

Customer KLH\_Production  
Database ID 139



## Disaster per ABS component

