

# Weekly SLA Customer Report

Customer AUJ Production  
Database ID 41



## Harddisk Usage AUJ Prod. ABSSolute DB server: PABSDB1

	Free disk space on / (%)	Total disk space on / (Gb)	Used disk space on / (Gb)	Free disk space on /bk (%)	Total disk space on /bk (Gb)	Used disk space on /bk (Gb)	Free disk space on /u02 (%)	Total disk space on /u02 (Gb)	Used disk space on /u02 (Gb)
17-12-2022	88	200	24	46	800	430	12	1,499	1,316
16-12-2022	88	200	24	42	800	466	12	1,499	1,316
15-12-2022	88	200	24	42	800	465	12	1,499	1,316
14-12-2022	88	200	24	42	800	465	12	1,499	1,316
13-12-2022	88	200	24	42	800	462	12	1,499	1,316
12-12-2022	88	200	24	43	800	459	12	1,499	1,316
11-12-2022	88	200	24	43	800	457	12	1,499	1,316

## Harddisk Usage AUJ Prod. BI DB server: PABSBI1

	Free disk space on / (%)	Total disk space on / (Gb)	Used disk space on / (Gb)	Free disk space on /u02 (%)	Total disk space on /u02 (Gb)	Used disk space on /u02 (Gb)
17-12-2022	88	200	25	70	1,000	298
16-12-2022	88	200	25	70	1,000	296
15-12-2022	88	200	25	70	1,000	296
14-12-2022	88	200	25	70	1,000	296
13-12-2022	88	200	25	70	1,000	296
12-12-2022	88	200	25	70	1,000	295
11-12-2022	88	200	25	70	1,000	298

# Weekly SLA Customer Report

Customer AUJ Production  
Database ID 41



## Harddisk Usage AUJ\_PRD\_ABS\_APP1

	Free disk space on / (%)	Total disk space on / (Gb)	Used disk space on / (Gb)	Free disk space on /abs (%)	Total disk space on /abs (Gb)	Used disk space on /abs (Gb)
17-12-2022	70	40	12	67	85	28
16-12-2022	70	40	12	67	85	28
15-12-2022	70	40	12	68	85	27
14-12-2022	70	40	12	69	85	27
13-12-2022	70	40	12	69	85	26
12-12-2022	70	40	12	70	85	26
11-12-2022	70	40	12	70	85	25

## Harddisk Usage AUJ\_PRD\_ABS\_APP2

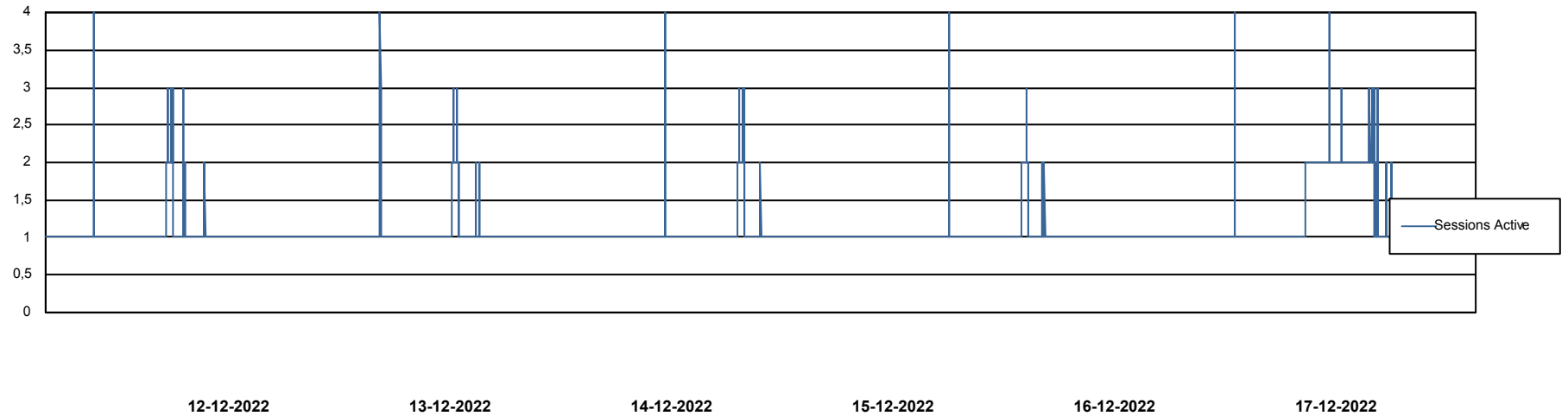
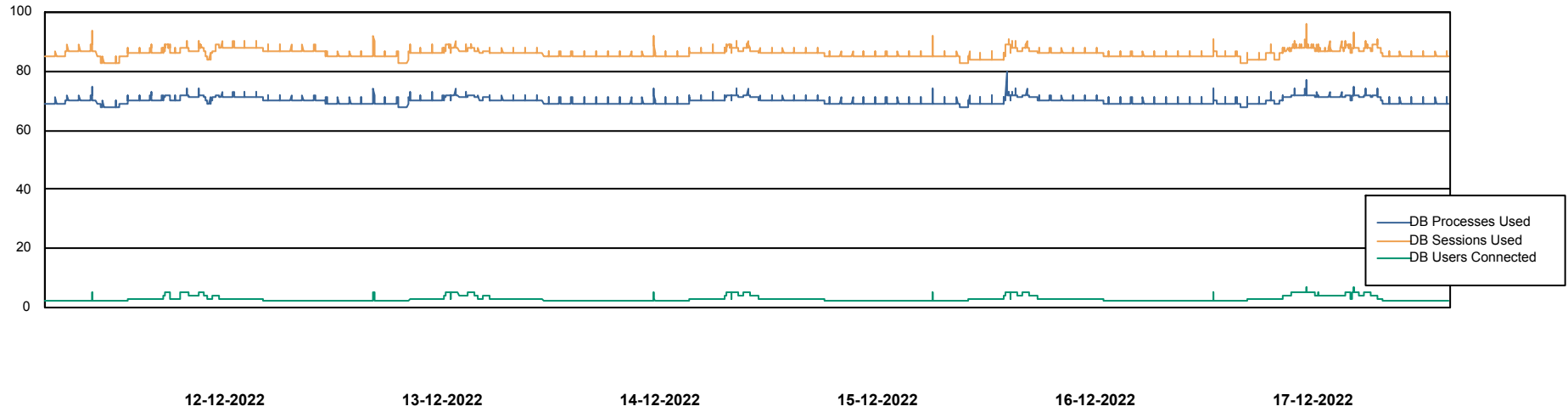
	Free disk space on / (%)	Total disk space on / (Gb)	Used disk space on / (Gb)	Free disk space on /abs (%)	Total disk space on /abs (Gb)	Used disk space on /abs (Gb)
17-12-2022	84	40	6	61	85	33
16-12-2022	84	40	6	61	85	33
15-12-2022	84	40	6	61	85	33
14-12-2022	84	40	6	62	85	32
13-12-2022	84	40	6	62	85	32
12-12-2022	84	40	6	63	85	31
11-12-2022	84	40	6	63	85	31

# Weekly SLA Customer Report

Customer AUJ Production  
Database ID 41



## Database Performance AUJ Prod. BI DB (PABSBI1 server)

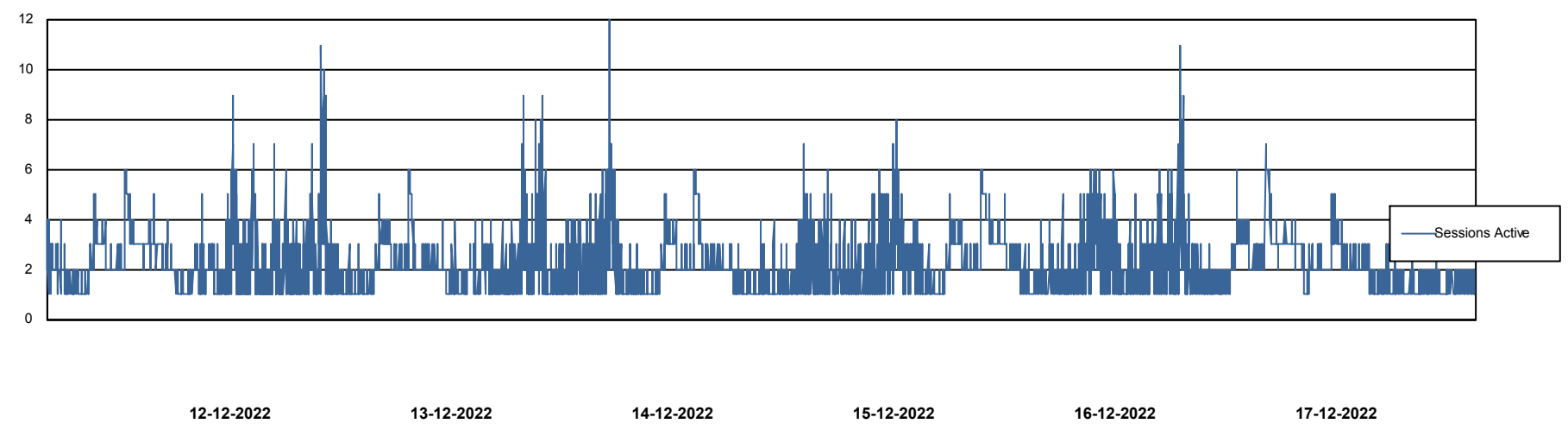
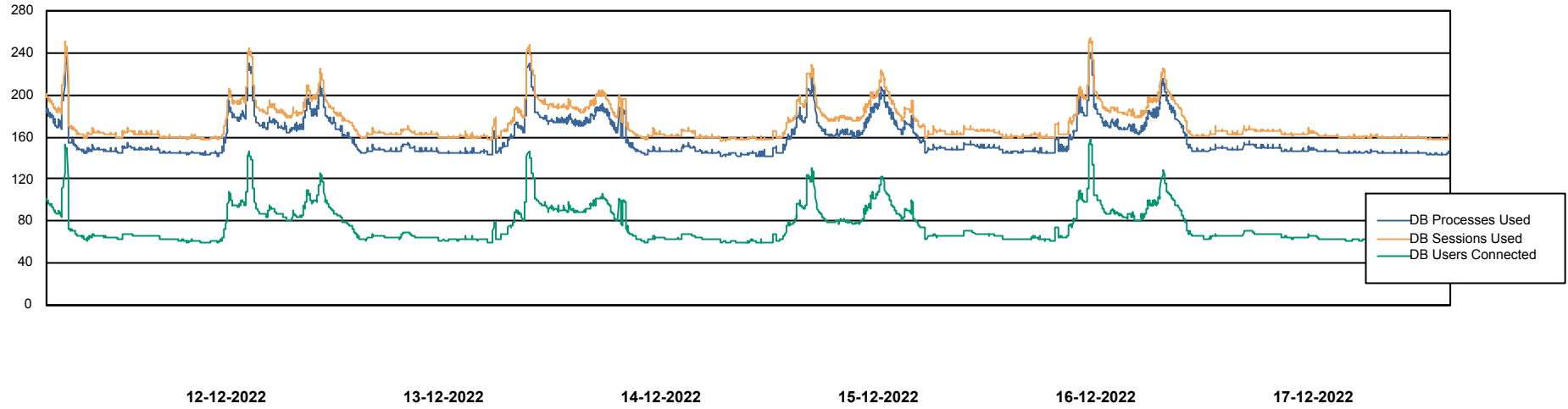


# Weekly SLA Customer Report

Customer AUJ Production  
Database ID 41



## Database Performance AUJ\_DB1\_Primary



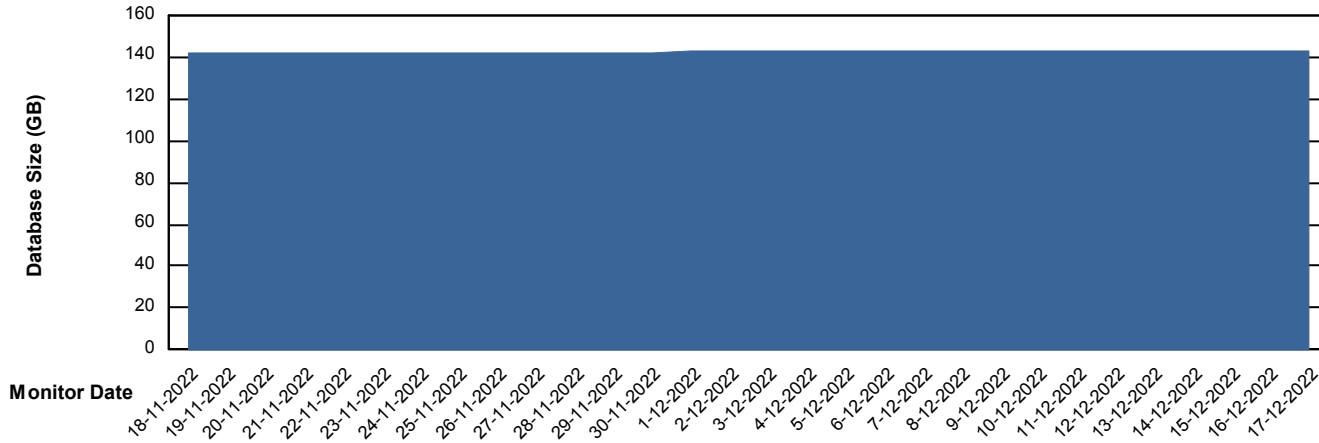
# Weekly SLA Customer Report

Customer AUJ Production  
Database ID 41



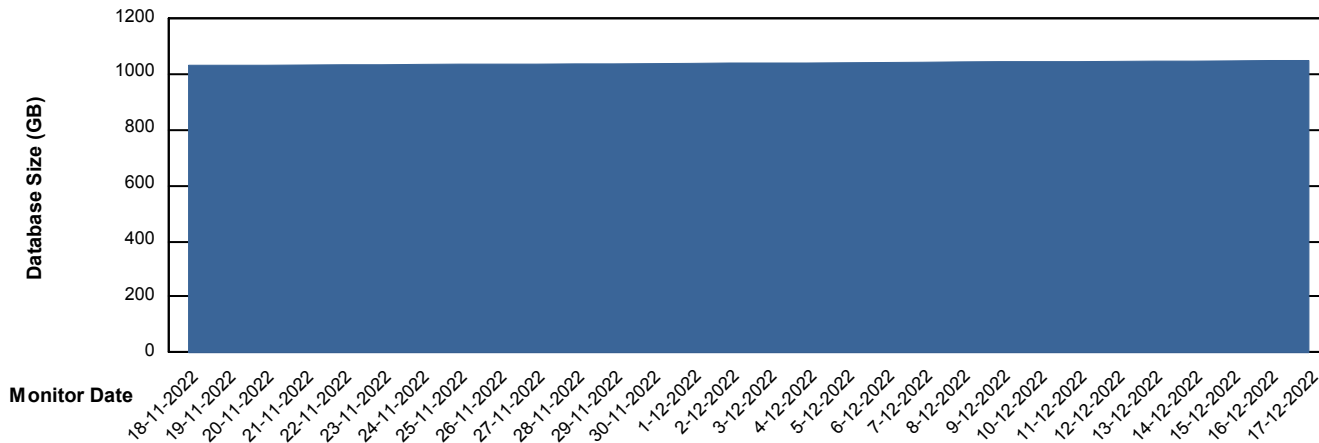
DATABASE SIZE AUJ Prod. BI DB (PABSBI1 server)

### Database growth over last month



DATABASE SIZE AUJ\_DB1\_Primary

### Database growth over last month



# Weekly SLA Customer Report

Customer AUJ Production  
Database ID 41



Database Tablespace AUJ Prod. BI DB (PABSBI1 server)

Date	Tablespace Name	Filesize (Gb)	Usedsize (Gb)	Percentage free
17-12-2022	ABSDATA	140	117	16
	INDX	29	23	20
16-12-2022	ABSDATA	140	117	16
	INDX	29	23	20
15-12-2022	ABSDATA	140	117	16
	INDX	29	23	20
14-12-2022	ABSDATA	140	117	16
	INDX	29	23	20
13-12-2022	ABSDATA	140	117	16
	INDX	29	23	20
12-12-2022	ABSDATA	140	117	16
	INDX	29	23	20
11-12-2022	ABSDATA	140	117	16
	INDX	29	23	20

# Weekly SLA Customer Report

Customer AUJ Production  
 Database ID 41



Database Tablespace AUJ\_DB1\_Primary

Date	Tablespace Name	Filesize (Gb)	Usedsize (Gb)	Percentage free
17-12-2022	ABSDATA	574	483	16
	INDX	674	558	17
16-12-2022	ABSDATA	574	483	16
	INDX	674	558	17
15-12-2022	ABSDATA	574	482	16
	INDX	674	557	17
14-12-2022	ABSDATA	574	482	16
	INDX	674	557	17
13-12-2022	ABSDATA	574	481	16
	INDX	674	557	17
12-12-2022	ABSDATA	574	481	16
	INDX	674	556	17
11-12-2022	ABSDATA	574	480	16
	INDX	674	556	18

BI Status and last ETL error for AUJ Prod. BI DB (PABSBI1 server)

	ma 12/12/2022	di 13/12/2022	wo 14/12/2022	do 15/12/2022	vr 16/12/2022	za 17/12/2022
<b>ABS DataWarehouse ETL Health</b>	OK	OK	OK	OK	OK	OK
<b>ABS DWHStaging ETL Health</b>	OK	OK	OK	OK	OK	OK

# Weekly SLA Customer Report

Customer AUJ Production  
Database ID 41



BI last ETL error for	AUJ Prod. BI DB (PABSBI1 server)
do, 15-12-2022	None
wo, 14-12-2022	None
zo, 11-12-2022	None
za, 17-12-2022	None
zo, 11-12-2022	None
ma, 12-12-2022	None
vr, 16-12-2022	None
wo, 14-12-2022	None
vr, 16-12-2022	None
za, 17-12-2022	None
ma, 12-12-2022	None
do, 15-12-2022	None
di, 13-12-2022	None
di, 13-12-2022	None

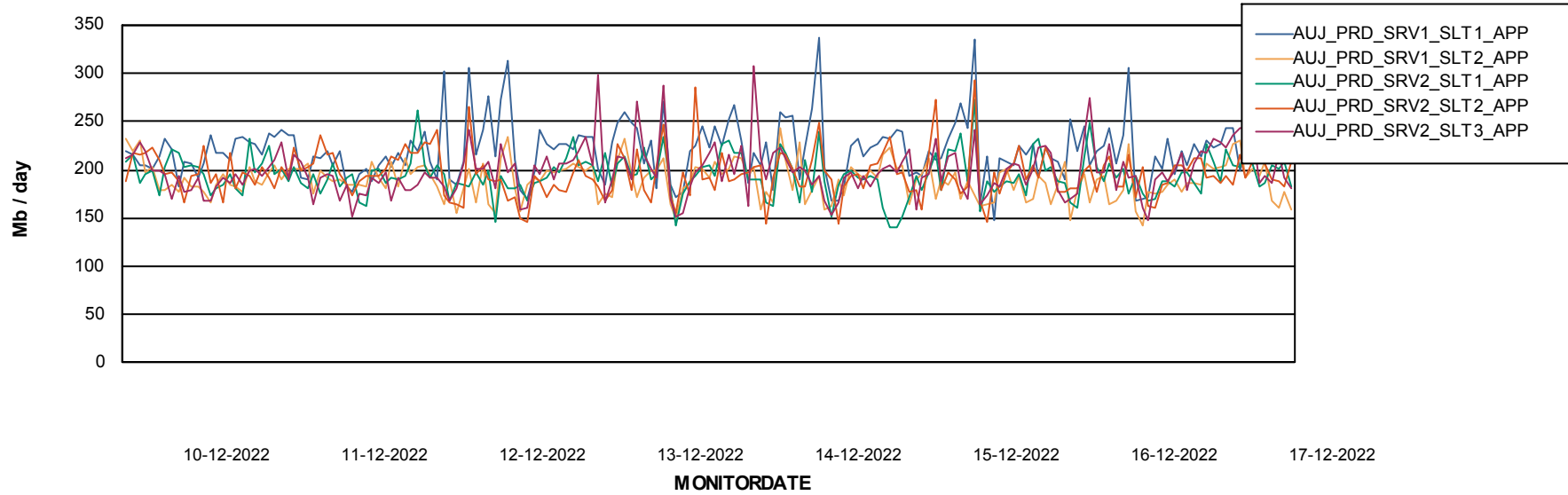
# Weekly SLA Customer Report

Customer AUJ Production  
Database ID 41

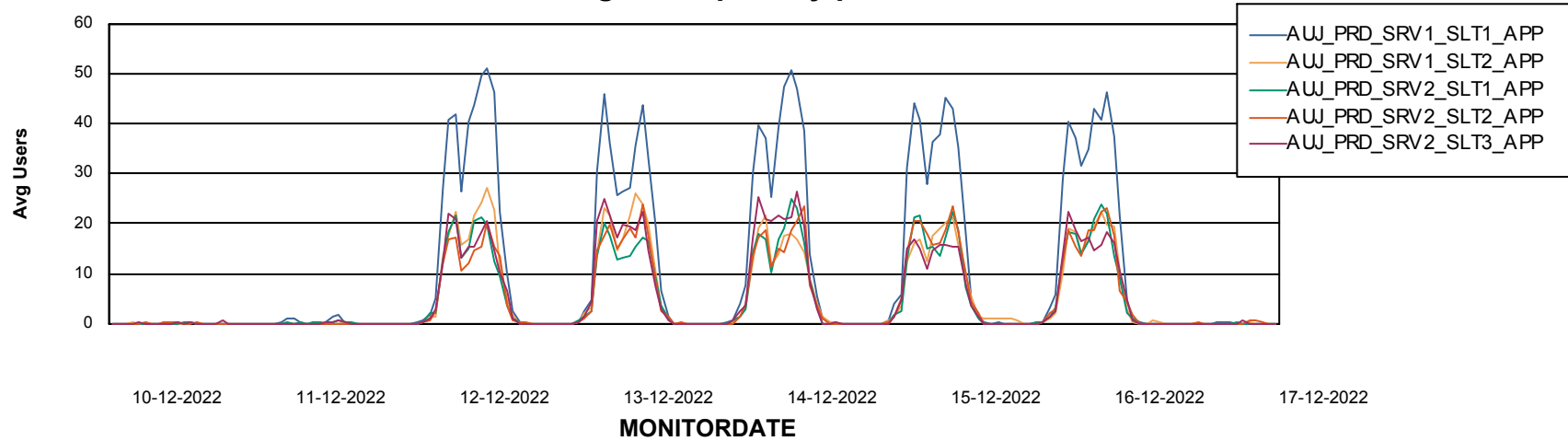


## ABSSolute Application Server Services

### Avg memory used per ABS Server Service



### Avg users per day per ABS server



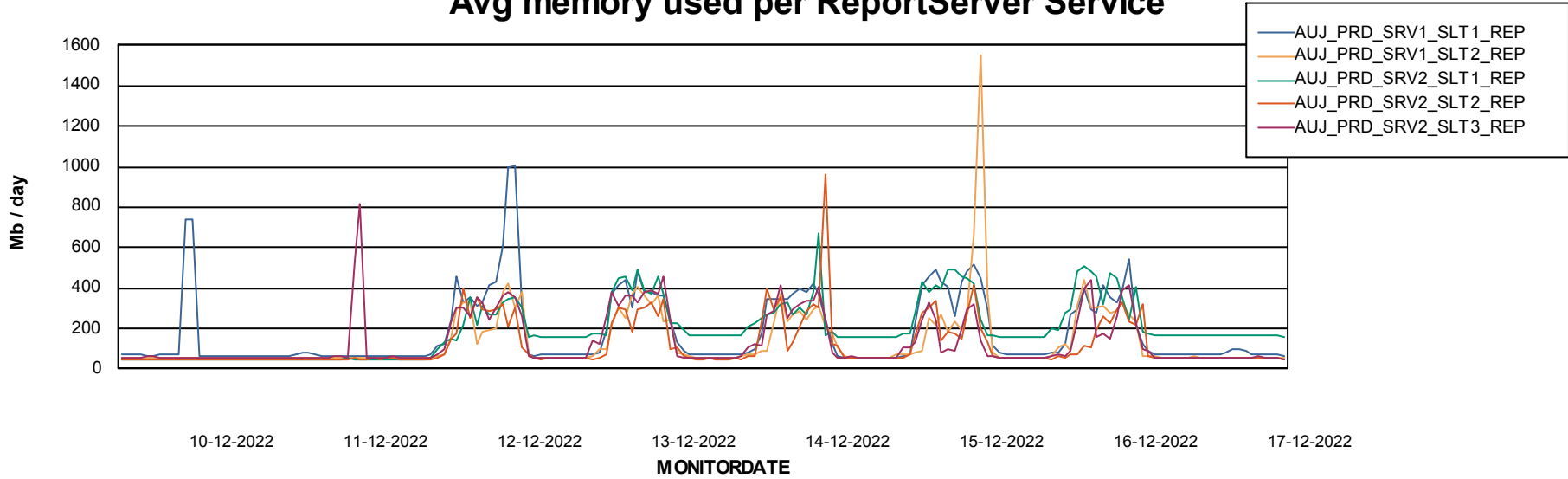
# Weekly SLA Customer Report

Customer AUJ Production  
Database ID 41



## ABSSolute Application ReportServer Services

### Avg memory used per ReportServer Service



### Disaster per ABS component

