

# Weekly SLA Customer Report

Customer AUJ Production  
Database ID 41



## Harddisk Usage AUJ Prod. ABSSolute DB server: PABSDB1

	Free disk space on / (%)	Total disk space on / (Gb)	Used disk space on / (Gb)	Free disk space on /bk (%)	Total disk space on /bk (Gb)	Used disk space on /bk (Gb)	Free disk space on /u02 (%)	Total disk space on /u02 (Gb)	Used disk space on /u02 (Gb)
10-12-2022	88	200	24	46	800	428	12	1,499	1,316
9-12-2022	88	200	24	42	800	464	12	1,499	1,316
8-12-2022	88	200	24	42	800	463	12	1,499	1,316
7-12-2022	88	200	24	42	800	463	12	1,499	1,316
6-12-2022	88	200	24	50	800	402	12	1,499	1,316
5-12-2022	88	200	24	46	800	433	12	1,499	1,316
4-12-2022	88	200	24	46	800	431	12	1,499	1,316

## Harddisk Usage AUJ Prod. BI DB server: PABSBI1

	Free disk space on / (%)	Total disk space on / (Gb)	Used disk space on / (Gb)	Free disk space on /u02 (%)	Total disk space on /u02 (Gb)	Used disk space on /u02 (Gb)
10-12-2022	88	200	25	70	1,000	298
9-12-2022	88	200	25	70	1,000	296
8-12-2022	88	200	25	70	1,000	296
7-12-2022	88	200	25	70	1,000	296
6-12-2022	86	200	28	70	1,000	295
5-12-2022	88	200	24	70	1,000	295
4-12-2022	88	200	24	70	1,000	298

# Weekly SLA Customer Report

Customer AUJ Production  
Database ID 41



## Harddisk Usage AUJ\_PRD\_ABS\_APP1

	Free disk space on / (%)	Total disk space on / (Gb)	Used disk space on / (Gb)	Free disk space on /abs (%)	Total disk space on /abs (Gb)	Used disk space on /abs (Gb)
10-12-2022	70	40	12	70	85	25
9-12-2022	70	40	12	71	85	25
8-12-2022	70	40	12	71	85	24
7-12-2022	70	40	12	72	85	24
6-12-2022	70	40	12	72	85	23
5-12-2022	70	40	12	73	85	23
4-12-2022	70	40	12	74	85	22

## Harddisk Usage AUJ\_PRD\_ABS\_APP2

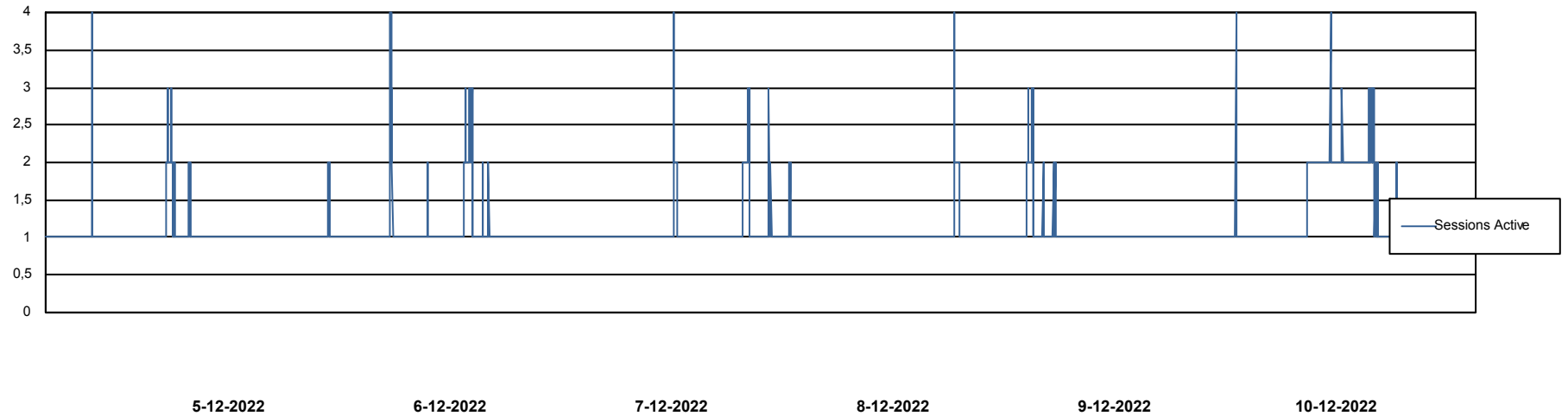
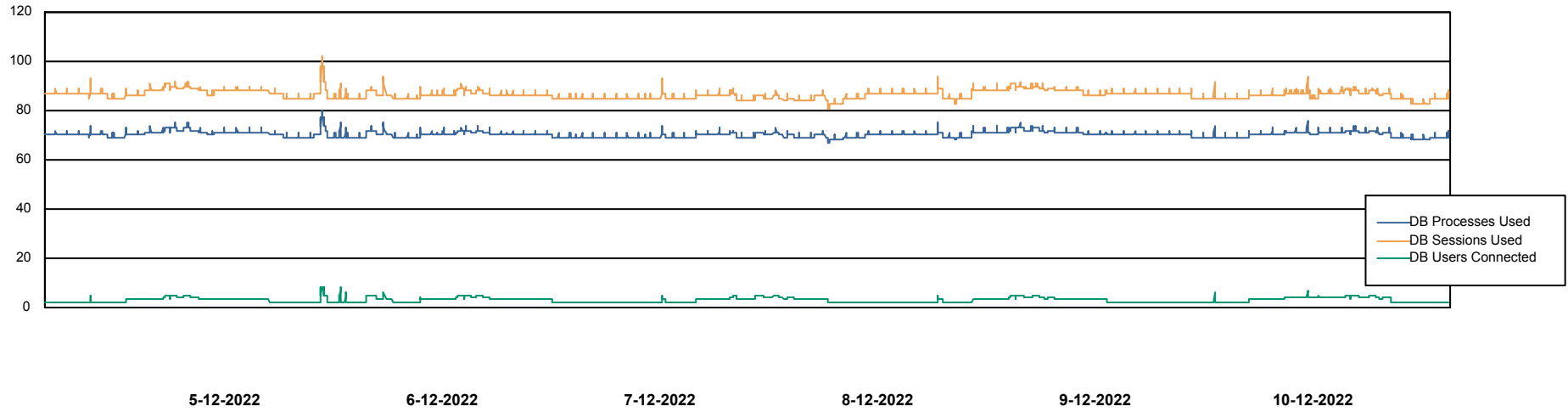
	Free disk space on / (%)	Total disk space on / (Gb)	Used disk space on / (Gb)	Free disk space on /abs (%)	Total disk space on /abs (Gb)	Used disk space on /abs (Gb)
10-12-2022	84	40	6	63	85	31
9-12-2022	84	40	6	63	85	31
8-12-2022	84	40	6	64	85	31
7-12-2022	84	40	6	64	85	31
6-12-2022	84	40	6	64	85	30
5-12-2022	84	40	6	65	85	30
4-12-2022	84	40	6	65	85	29

# Weekly SLA Customer Report

Customer AUJ Production  
Database ID 41



## Database Performance AUJ Prod. BI DB (PABSBI1 server)

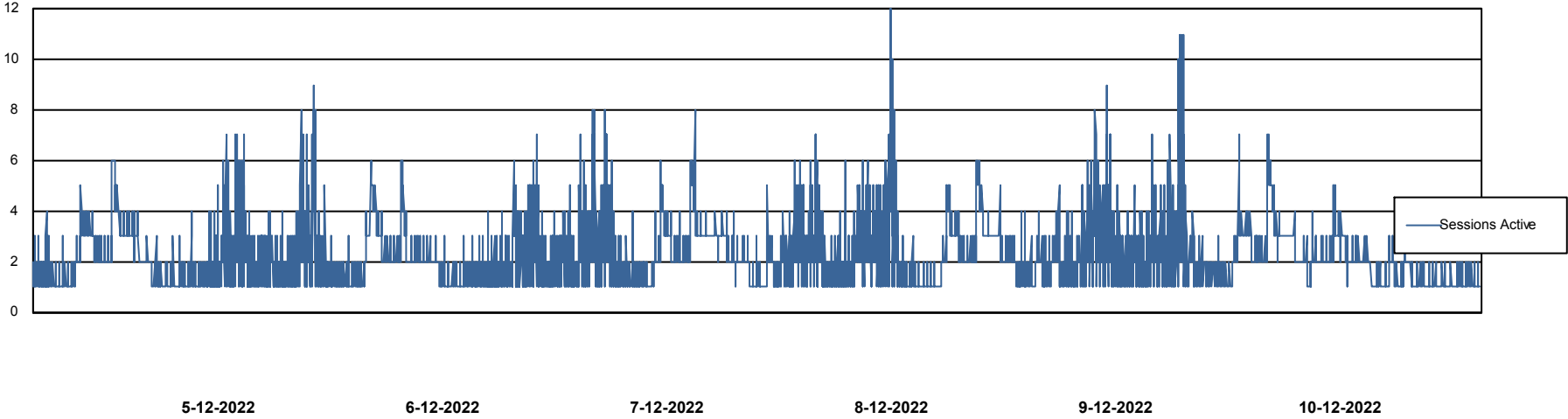
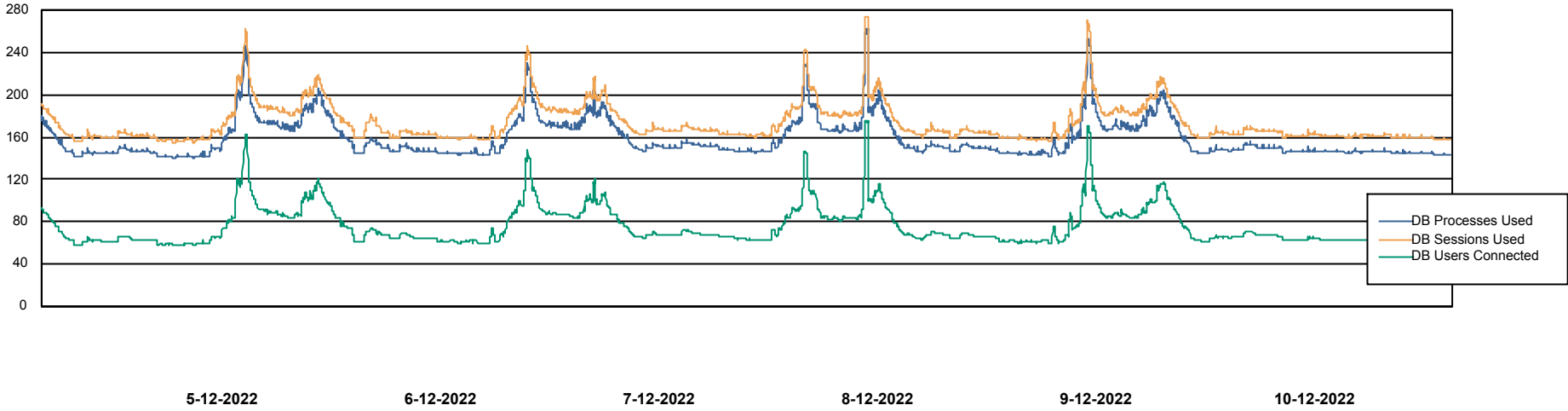


# Weekly SLA Customer Report

Customer AUJ Production  
Database ID 41



Database Performance AUJ\_DB1\_Primary



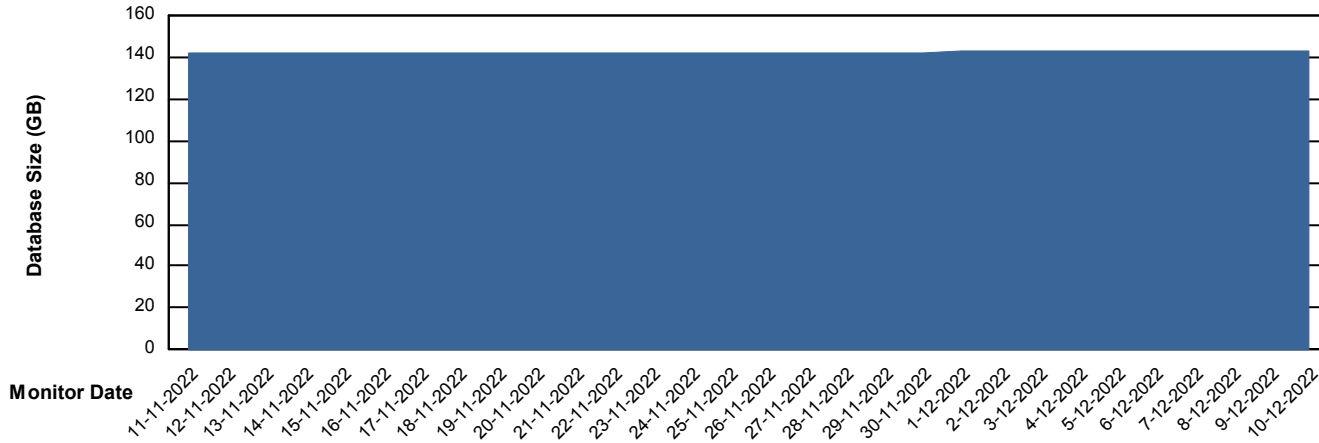
# Weekly SLA Customer Report

Customer AUJ Production  
Database ID 41



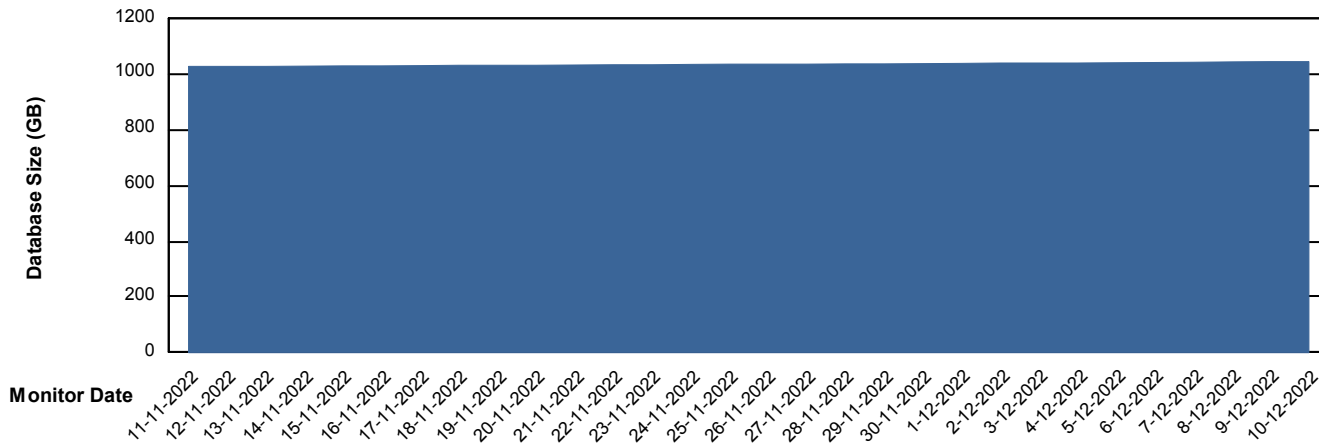
DATABASE SIZE AUJ Prod. BI DB (PABSBI1 server)

### Database growth over last month



DATABASE SIZE AUJ\_DB1\_Primary

### Database growth over last month



# Weekly SLA Customer Report

Customer AUJ Production  
 Database ID 41



Database Tablespace AUJ Prod. BI DB (PABSBI1 server)

Date	Tablespace Name	Filesize (Gb)	Usedsize (Gb)	Percentage free
10-12-2022	ABSDATA	140	117	16
	INDX	29	23	20
9-12-2022	ABSDATA	140	117	16
	INDX	29	23	20
8-12-2022	ABSDATA	140	117	16
	INDX	29	23	20
7-12-2022	ABSDATA	140	117	16
	INDX	29	23	21
6-12-2022	ABSDATA	140	117	16
	INDX	29	23	21
5-12-2022	ABSDATA	140	117	16
	INDX	29	23	21
4-12-2022	ABSDATA	140	117	16
	INDX	29	23	21

# Weekly SLA Customer Report

Customer AUJ Production  
 Database ID 41



Database Tablespace AUJ\_DB1\_Primary

Date	Tablespace Name	Filesize (Gb)	Usedsize (Gb)	Percentage free
10-12-2022	ABSDATA	574	480	16
	INDX	674	556	18
9-12-2022	ABSDATA	574	480	16
	INDX	674	556	18
8-12-2022	ABSDATA	574	480	16
	INDX	674	555	18
7-12-2022	ABSDATA	574	479	16
	INDX	674	555	18
6-12-2022	ABSDATA	574	479	17
	INDX	674	554	18
5-12-2022	ABSDATA	574	478	17
	INDX	674	554	18
4-12-2022	ABSDATA	574	478	17
	INDX	674	554	18

BI Status and last ETL error for AUJ Prod. BI DB (PABSBI1 server)

	ma 5/12/2022	di 6/12/2022	wo 7/12/2022	do 8/12/2022	vr 9/12/2022	za 10/12/2022
<b>ABS DataWarehouse ETL Health</b>	OK	OK	OK	OK	OK	OK
<b>ABS DWHStaging ETL Health</b>	OK	OK	OK	OK	OK	OK

# Weekly SLA Customer Report

Customer AUJ Production  
Database ID 41



BI last ETL error for	AUJ Prod. BI DB (PABSBI1 server)
ma, 5-12-2022	None
za, 10-12-2022	None
vr, 9-12-2022	None
di, 6-12-2022	None
zo, 4-12-2022	None
za, 10-12-2022	None
wo, 7-12-2022	None
do, 8-12-2022	None
vr, 9-12-2022	None
do, 8-12-2022	None
zo, 4-12-2022	None
ma, 5-12-2022	None
di, 6-12-2022	None
wo, 7-12-2022	None

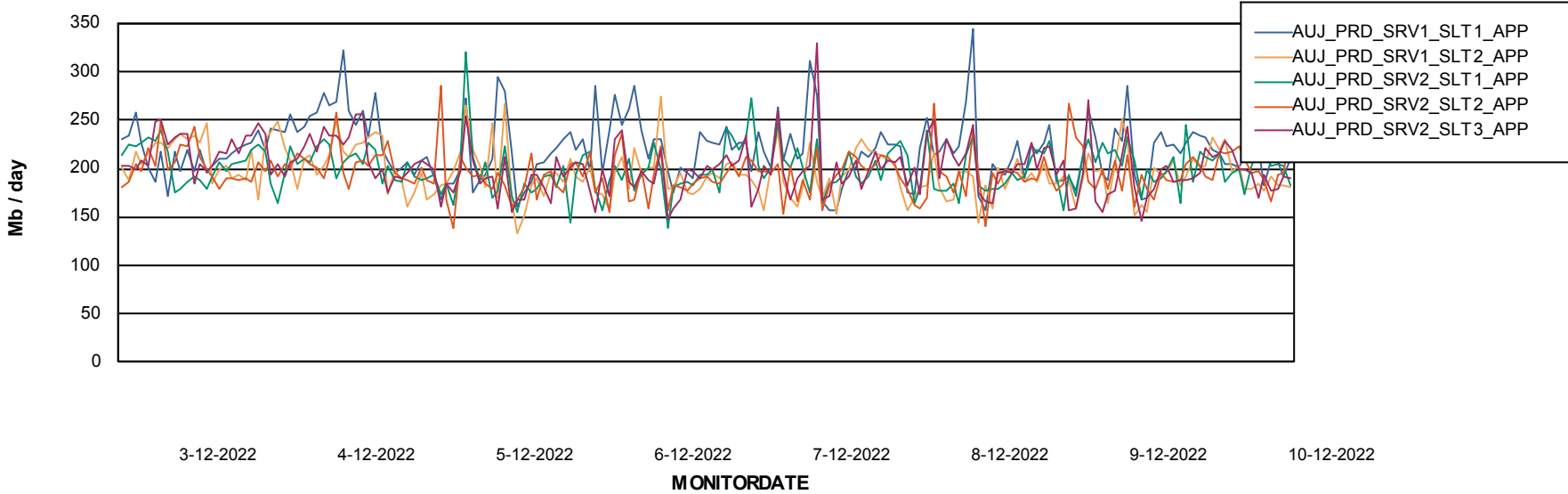
# Weekly SLA Customer Report

Customer AUJ Production  
Database ID 41

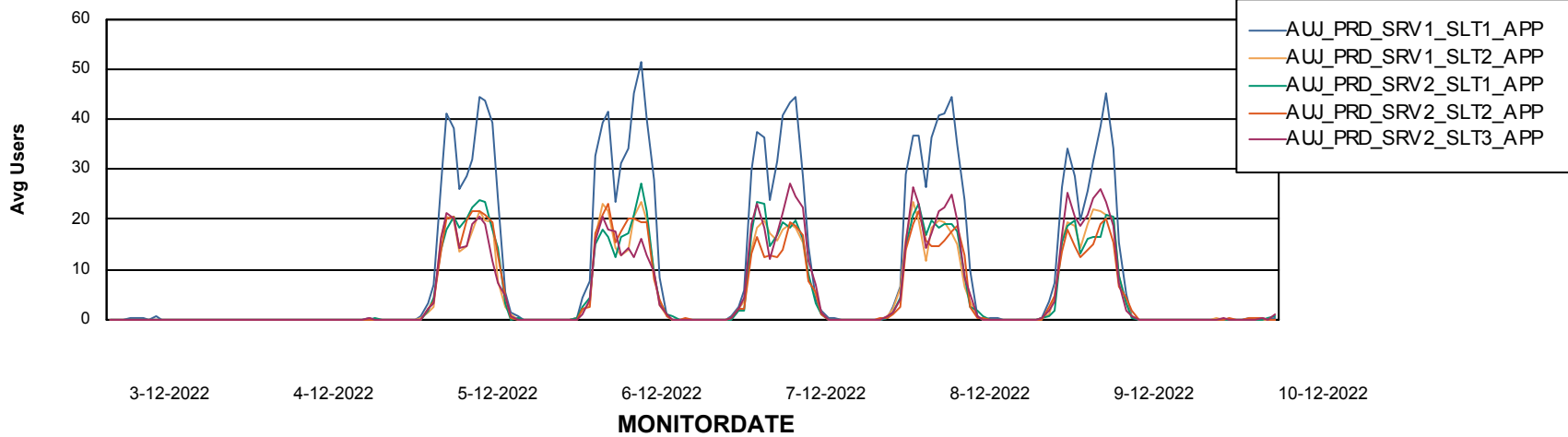


## ABSSolute Application Server Services

### Avg memory used per ABS Server Service



### Avg users per day per ABS server



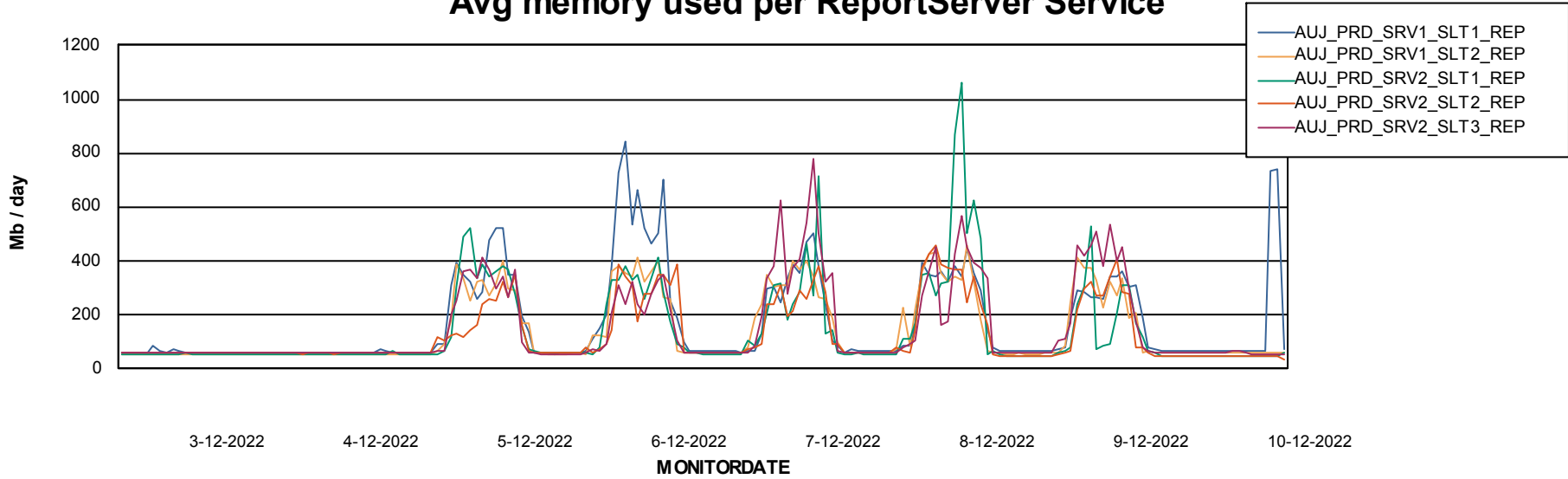
# Weekly SLA Customer Report

Customer AUJ Production  
Database ID 41



## ABSSolute Application ReportServer Services

### Avg memory used per ReportServer Service



### Disaster per ABS component

