

# Weekly SLA Customer Report

Customer AUJ Production  
Database ID 41



## Harddisk Usage AUJ Prod. ABSSolute DB server: PABSDB1

	Free disk space on / (%)	Total disk space on / (Gb)	Used disk space on / (Gb)	Free disk space on /bk (%)	Total disk space on /bk (Gb)	Used disk space on /bk (Gb)	Free disk space on /u02 (%)	Total disk space on /u02 (Gb)	Used disk space on /u02 (Gb)
3-12-2022	88	200	24	50	800	402	12	1,499	1,316
2-12-2022	88	200	24	45	800	438	12	1,499	1,316
1-12-2022	88	200	23	45	800	438	12	1,499	1,316
30-11-2022	88	200	23	45	800	438	12	1,499	1,316
29-11-2022	88	200	23	46	800	434	12	1,499	1,316
28-11-2022	88	200	23	46	800	432	12	1,499	1,316
27-11-2022	88	200	23	46	800	429	12	1,499	1,316

## Harddisk Usage AUJ Prod. BI DB server: PABSBI1

	Free disk space on / (%)	Total disk space on / (Gb)	Used disk space on / (Gb)	Free disk space on /u02 (%)	Total disk space on /u02 (Gb)	Used disk space on /u02 (Gb)
3-12-2022	88	200	24	70	1,000	298
2-12-2022	88	200	24	70	1,000	295
1-12-2022	88	200	24	70	1,000	295
30-11-2022	88	200	24	70	1,000	295
29-11-2022	88	200	24	70	1,000	295
28-11-2022	88	200	24	71	1,000	295
27-11-2022	88	200	24	70	1,000	298

# Weekly SLA Customer Report

Customer AUJ Production  
Database ID 41



## Harddisk Usage AUJ\_PRD\_ABS\_APP1

	Free disk space on / (%)	Total disk space on / (Gb)	Used disk space on / (Gb)	Free disk space on /abs (%)	Total disk space on /abs (Gb)	Used disk space on /abs (Gb)
3-12-2022	70	40	12	74	85	22
2-12-2022	70	40	12	74	85	22
1-12-2022	70	40	12	75	85	22
30-11-2022	70	40	12	75	85	21
29-11-2022	70	40	12	76	85	20
28-11-2022	70	40	12	77	85	20
27-11-2022	70	40	12	77	85	19

## Harddisk Usage AUJ\_PRD\_ABS\_APP2

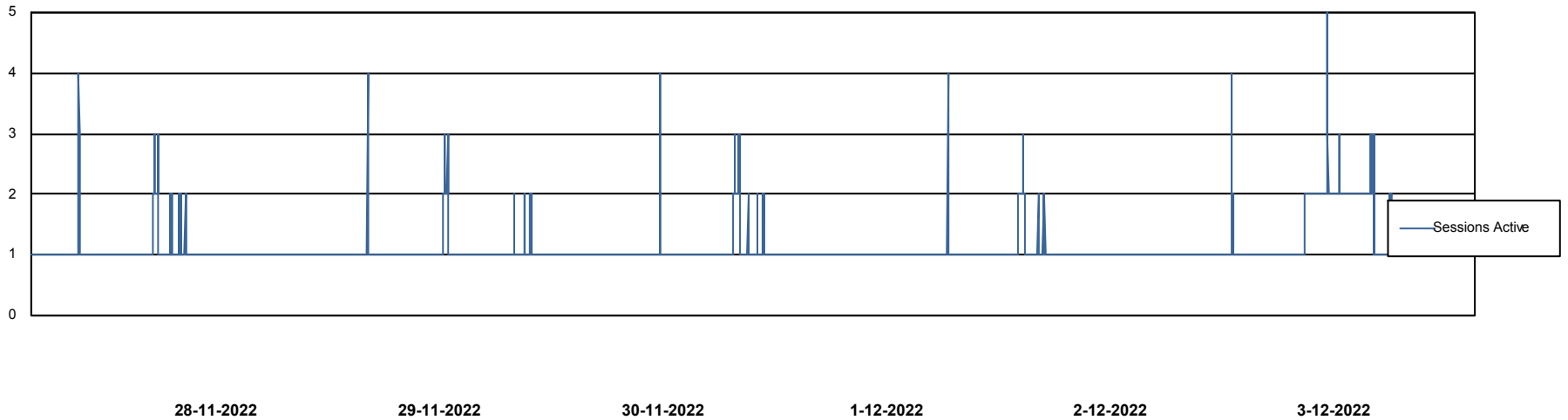
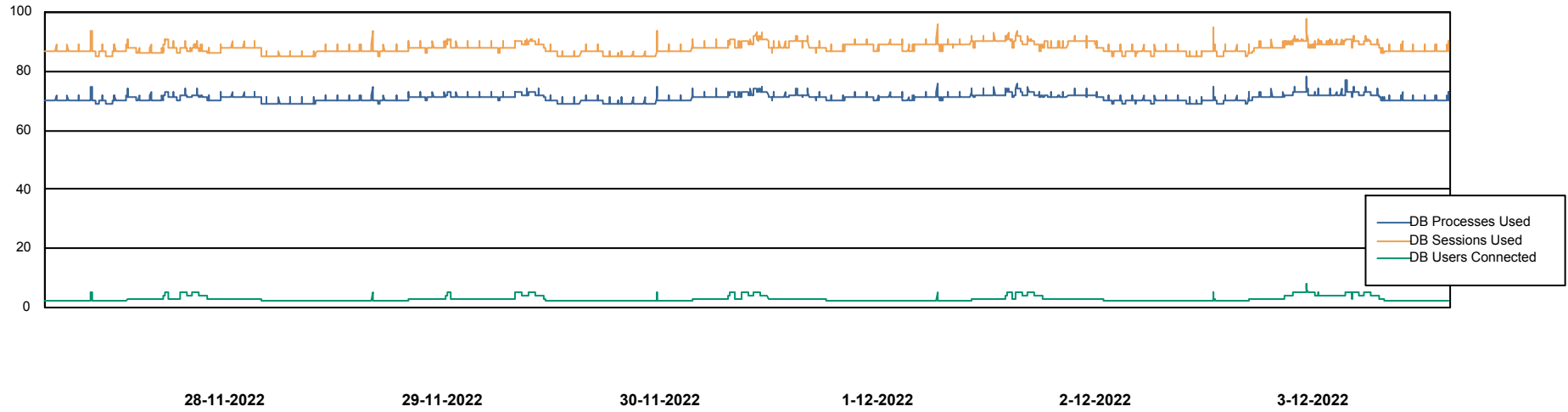
	Free disk space on / (%)	Total disk space on / (Gb)	Used disk space on / (Gb)	Free disk space on /abs (%)	Total disk space on /abs (Gb)	Used disk space on /abs (Gb)
3-12-2022	84	40	6	65	85	29
2-12-2022	84	40	6	65	85	30
1-12-2022	84	40	6	66	85	29
30-11-2022	84	40	6	66	85	29
29-11-2022	84	40	6	67	85	28
28-11-2022	84	40	6	67	85	28
27-11-2022	84	40	6	68	85	27

# Weekly SLA Customer Report

Customer AUJ Production  
Database ID 41



## Database Performance AUJ Prod. BI DB (PABSBI1 server)

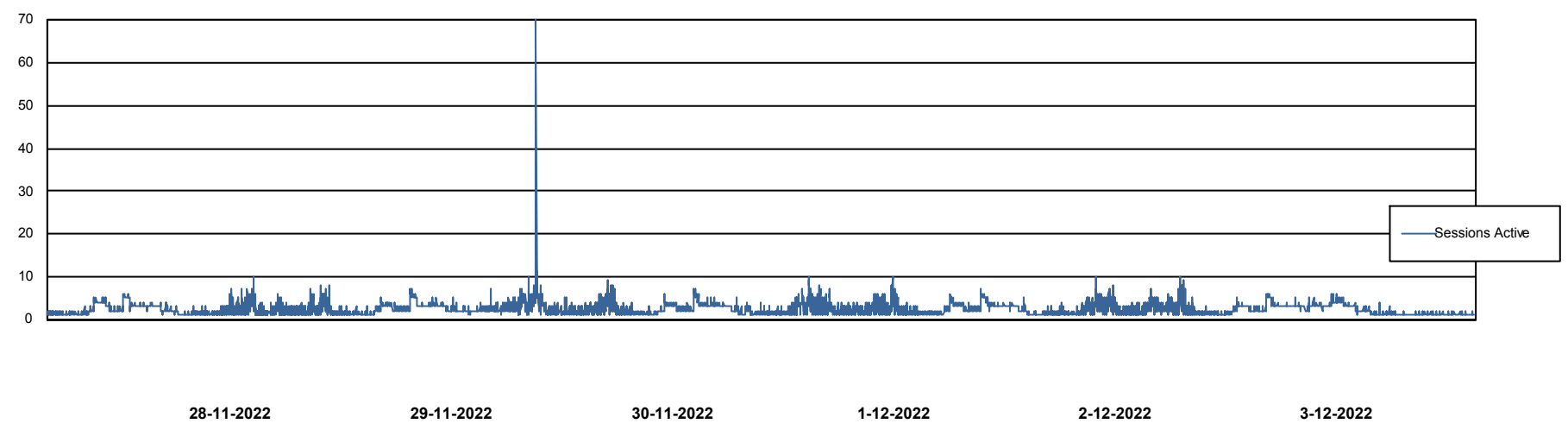
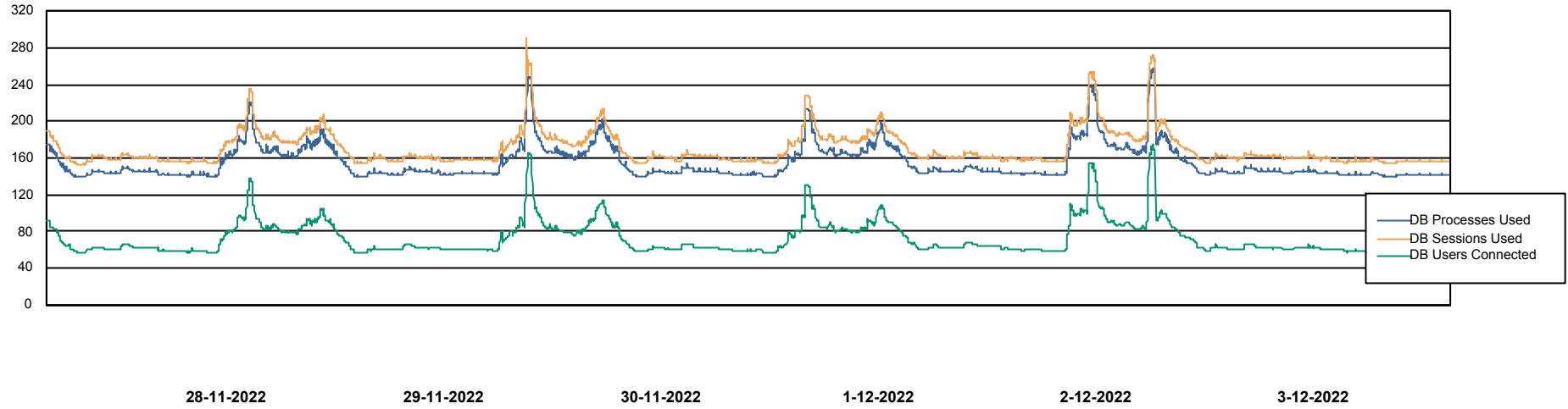


# Weekly SLA Customer Report

Customer AUJ Production  
Database ID 41



## Database Performance AUJ\_DB1\_Primary



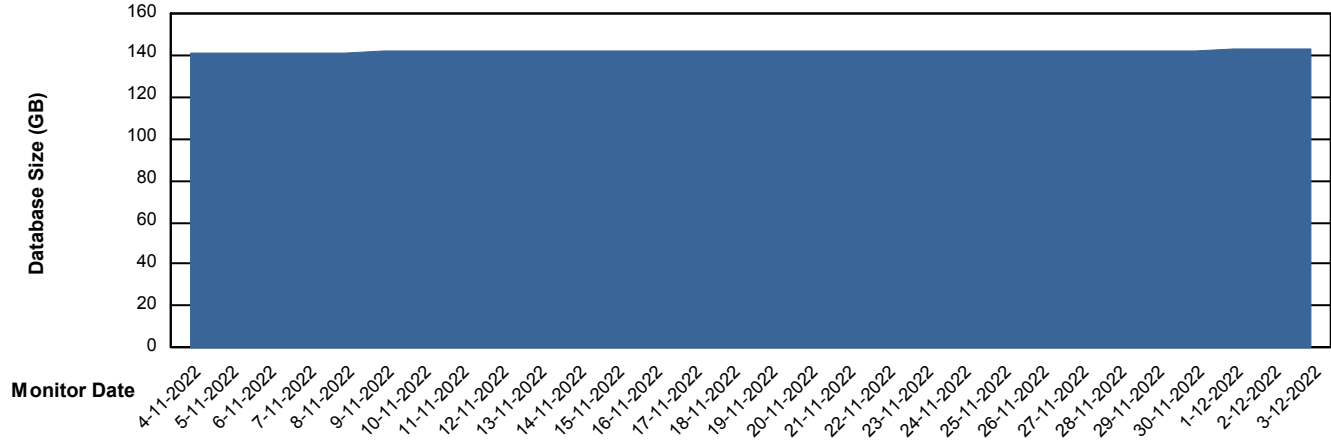
# Weekly SLA Customer Report

Customer AUJ Production  
Database ID 41



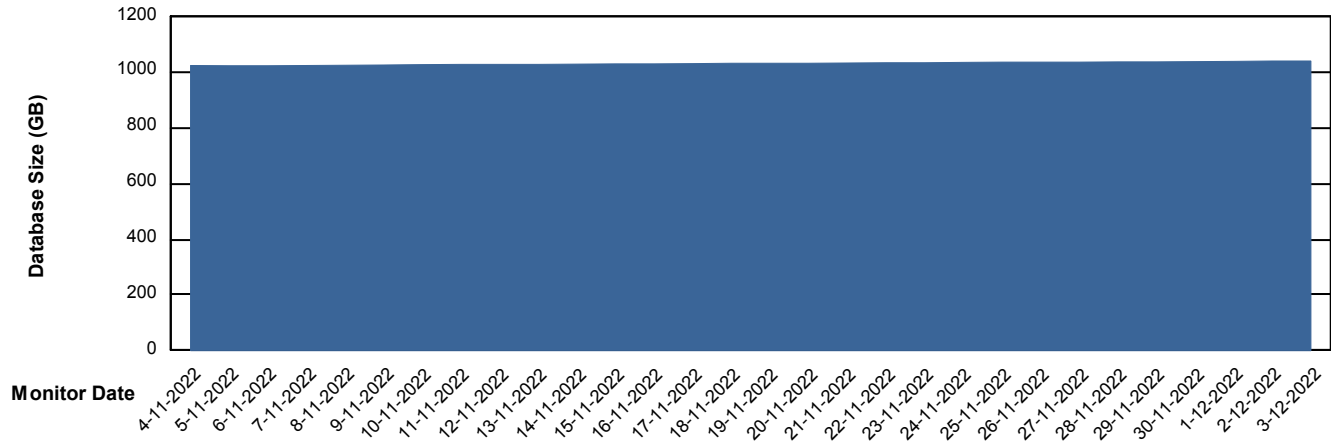
DATABASE SIZE AUJ Prod. BI DB (PABSBI1 server)

### Database growth over last month



DATABASE SIZE AUJ\_DB1\_Primary

### Database growth over last month



# Weekly SLA Customer Report

Customer AUJ Production  
Database ID 41



## Database Tablespace AUJ Prod. BI DB (PABSBI1 server)

Date	Tablespace Name	Filesize (Gb)	Usedsize (Gb)	Percentage free
3-12-2022	ABSDATA	140	117	16
	INDX	29	23	21
2-12-2022	ABSDATA	140	117	16
	INDX	29	23	21
1-12-2022	ABSDATA	140	117	16
	INDX	29	23	21
30-11-2022	ABSDATA	140	117	17
	INDX	29	23	21
29-11-2022	ABSDATA	140	117	17
	INDX	29	23	21
28-11-2022	ABSDATA	140	117	17
	INDX	29	23	21
27-11-2022	ABSDATA	140	117	17
	INDX	29	23	21

# Weekly SLA Customer Report

Customer AUJ Production  
 Database ID 41



Database Tablespace AUJ\_DB1\_Primary

Date	Tablespace Name	Filesize (Gb)	Usedsize (Gb)	Percentage free
3-12-2022	ABSDATA	574	478	17
	INDX	674	554	18
2-12-2022	ABSDATA	574	478	17
	INDX	674	554	18
1-12-2022	ABSDATA	574	478	17
	INDX	674	553	18
30-11-2022	ABSDATA	574	477	17
	INDX	674	553	18
29-11-2022	ABSDATA	574	477	17
	INDX	674	552	18
28-11-2022	ABSDATA	574	476	17
	INDX	674	552	18
27-11-2022	ABSDATA	574	476	17
	INDX	674	551	18

BI Status and last ETL error for AUJ Prod. BI DB (PABSBI1 server)

	ma 28/11/2022	di 29/11/2022	wo 30/11/2022	do 1/12/2022	vr 2/12/2022	za 3/12/2022
<b>ABS DataWarehouse ETL Health</b>	OK	OK	OK	OK	OK	OK
<b>ABS DWHStaging ETL Health</b>	OK	OK	OK	OK	OK	OK

# Weekly SLA Customer Report

Customer AUJ Production  
Database ID 41



BI last ETL error for	AUJ Prod. BI DB (PABSBI1 server)
di, 29-11-2022	None
di, 29-11-2022	None
wo, 30-11-2022	None
do, 1-12-2022	None
ma, 28-11-2022	None
wo, 30-11-2022	None
zo, 27-11-2022	None
zo, 27-11-2022	None
za, 3-12-2022	None
ma, 28-11-2022	None
vr, 2-12-2022	None
vr, 2-12-2022	None
do, 1-12-2022	None
za, 3-12-2022	None

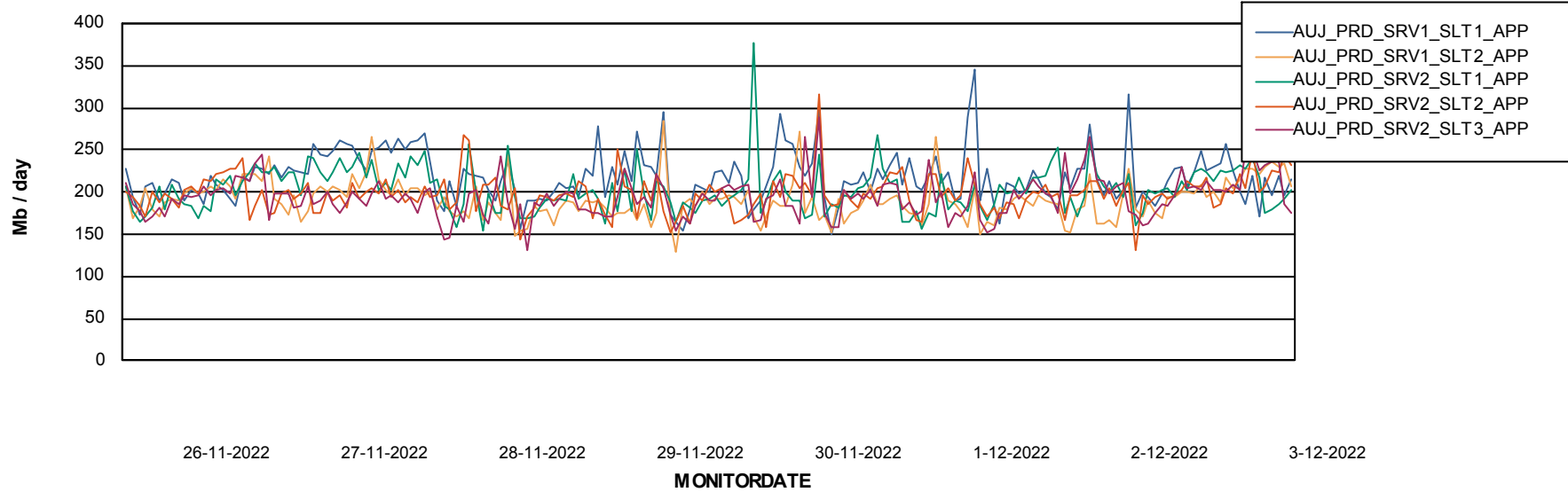
# Weekly SLA Customer Report

Customer AUJ Production  
Database ID 41

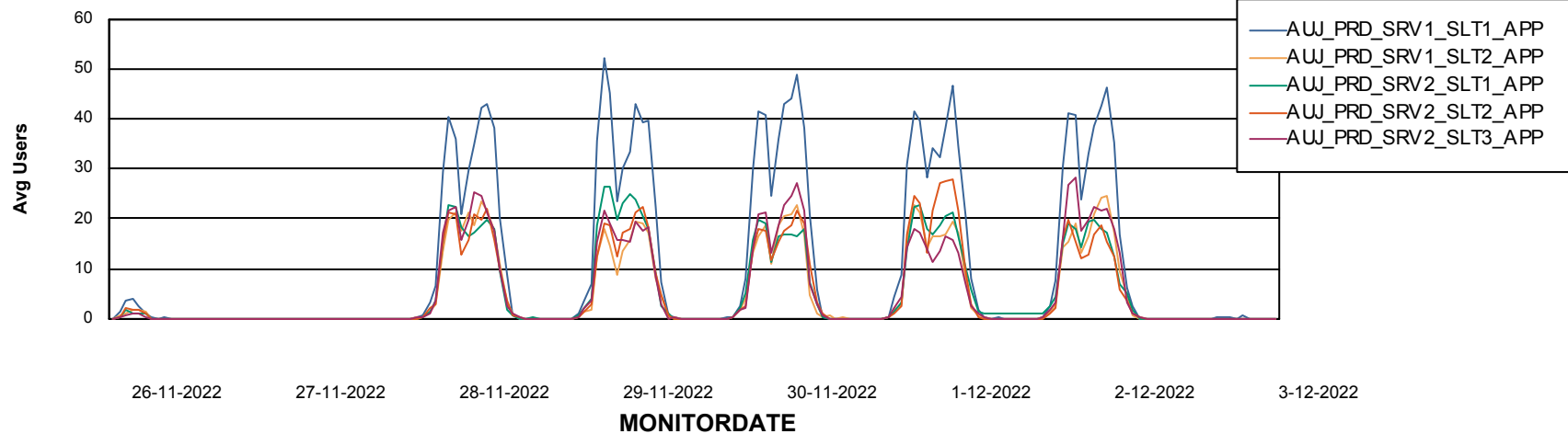


## ABSSolute Application Server Services

### Avg memory used per ABS Server Service



### Avg users per day per ABS server



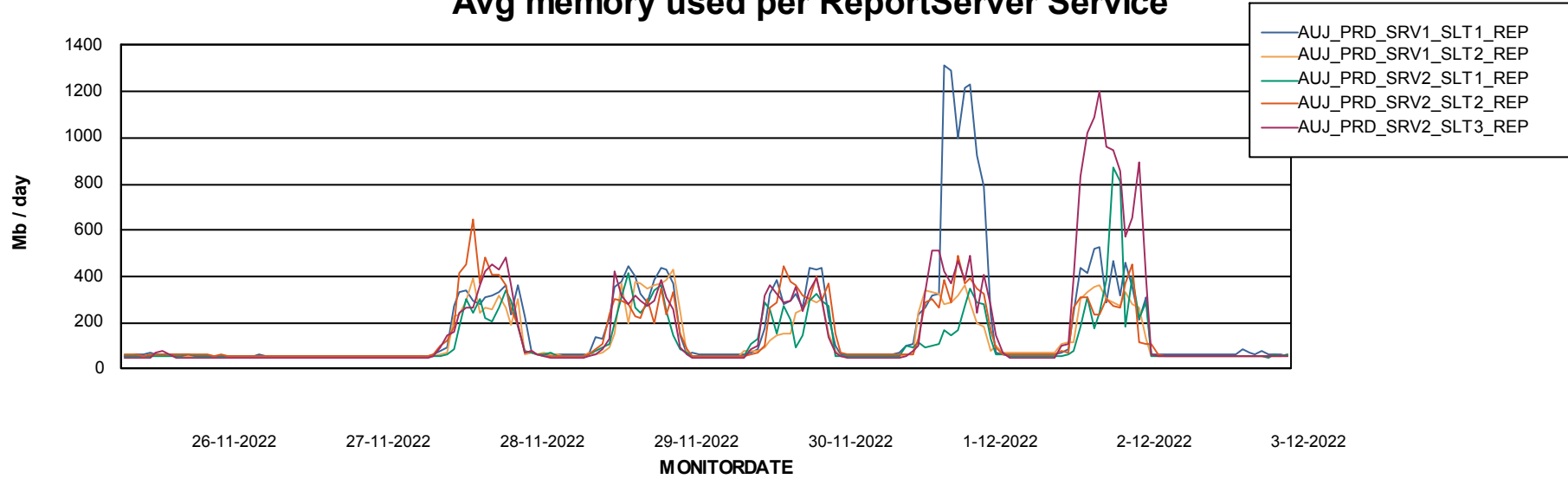
# Weekly SLA Customer Report

Customer AUJ Production  
Database ID 41



## ABSSolute Application ReportServer Services

### Avg memory used per ReportServer Service



### Disaster per ABS component

