

# Weekly SLA Customer Report

Customer AUJ Production  
Database ID 41



## Harddisk Usage AUJ Prod. ABSSolute DB server: PABSDB1

	Free disk space on / (%)	Total disk space on / (Gb)	Used disk space on / (Gb)	Free disk space on /bk (%)	Total disk space on /bk (Gb)	Used disk space on /bk (Gb)	Free disk space on /u02 (%)	Total disk space on /u02 (Gb)	Used disk space on /u02 (Gb)
29-10-2022	89	200	23	26	800	589	13	1,499	1,301
28-10-2022	89	200	23	22	800	624	13	1,499	1,301
27-10-2022	89	200	23	22	800	623	13	1,499	1,301
26-10-2022	89	200	23	22	800	620	13	1,499	1,301
25-10-2022	89	200	23	23	800	617	15	1,499	1,281
24-10-2022	89	200	23	23	800	616	15	1,499	1,271
23-10-2022	89	200	23	23	800	615	15	1,499	1,271

## Harddisk Usage AUJ Prod. BI DB server: PABSBI1

	Free disk space on / (%)	Total disk space on / (Gb)	Used disk space on / (Gb)	Free disk space on /u02 (%)	Total disk space on /u02 (Gb)	Used disk space on /u02 (Gb)
29-10-2022	88	200	24	70	1,000	298
28-10-2022	88	200	24	71	1,000	294
27-10-2022	88	200	24	71	1,000	294
26-10-2022	88	200	24	71	1,000	294
25-10-2022	88	200	24	71	1,000	294
24-10-2022	88	200	24	71	1,000	294
23-10-2022	88	200	24	70	1,000	296

# Weekly SLA Customer Report

Customer AUJ Production  
Database ID 41



## Harddisk Usage AUJ\_PRD\_ABS\_APP1

	Free disk space on / (%)	Total disk space on / (Gb)	Used disk space on / (Gb)	Free disk space on /abs (%)	Total disk space on /abs (Gb)	Used disk space on /abs (Gb)
29-10-2022	70	40	12	80	85	17
28-10-2022	70	40	12	80	85	17
27-10-2022	70	40	12	80	85	17
26-10-2022	70	40	12	81	85	16
25-10-2022	70	40	12	82	85	16
24-10-2022	70	40	12	82	85	15
23-10-2022	70	40	12	83	85	15

## Harddisk Usage AUJ\_PRD\_ABS\_APP2

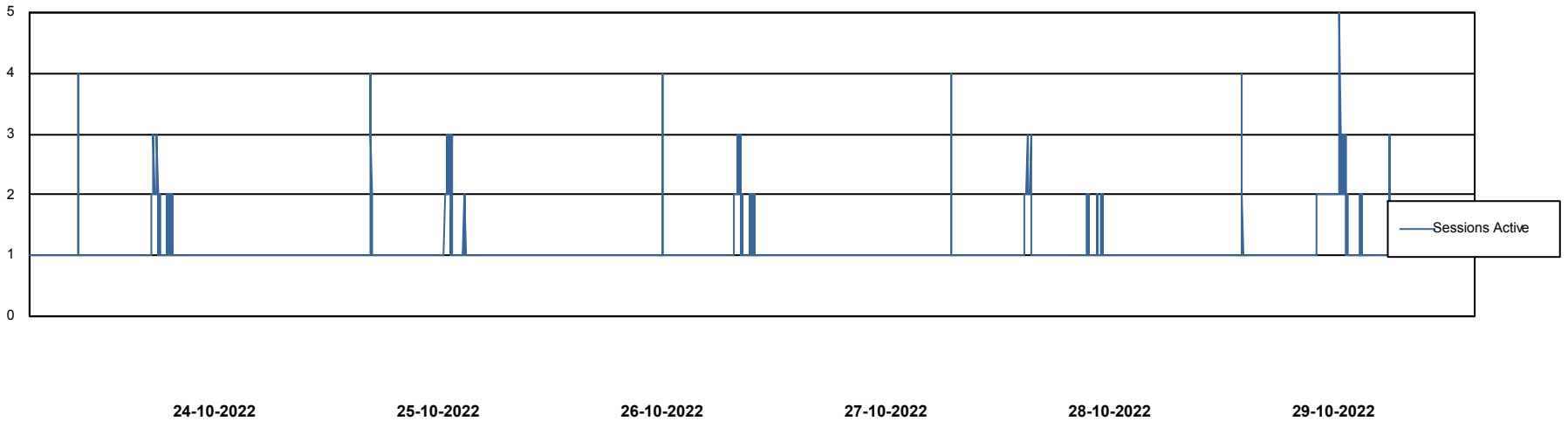
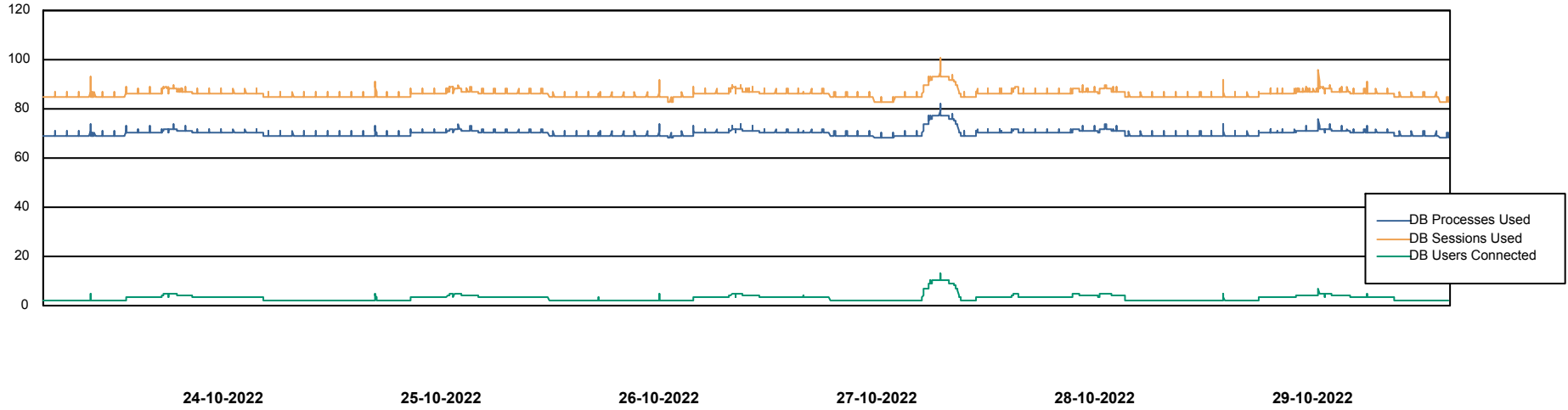
	Free disk space on / (%)	Total disk space on / (Gb)	Used disk space on / (Gb)	Free disk space on /abs (%)	Total disk space on /abs (Gb)	Used disk space on /abs (Gb)
29-10-2022	84	40	6	69	85	27
28-10-2022	84	40	6	68	85	27
27-10-2022	84	40	6	68	85	27
26-10-2022	84	40	6	69	85	27
25-10-2022	84	40	6	69	85	26
24-10-2022	84	40	6	70	85	26
23-10-2022	84	40	6	70	85	25

# Weekly SLA Customer Report

Customer AUJ Production  
Database ID 41



## Database Performance AUJ Prod. BI DB (PABSBI1 server)

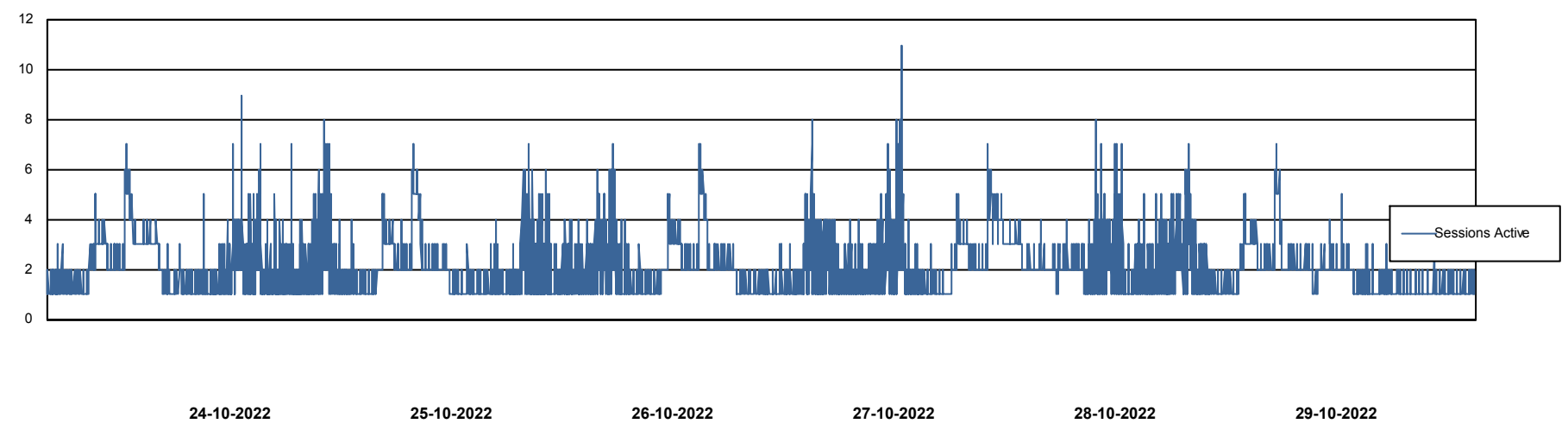
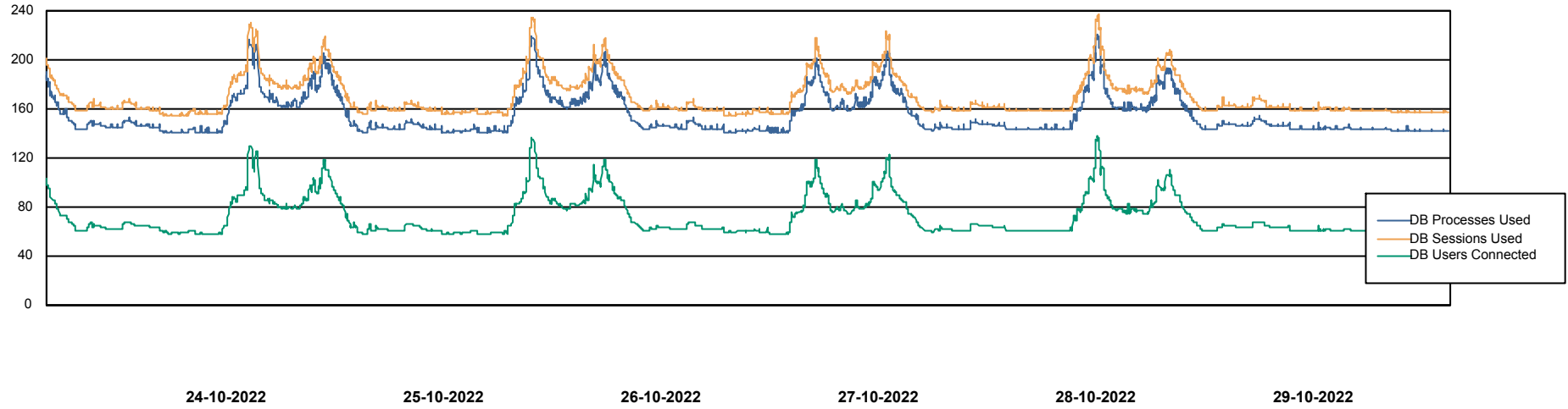


# Weekly SLA Customer Report

Customer AUJ Production  
Database ID 41



## Database Performance AUJ\_DB1\_Primary



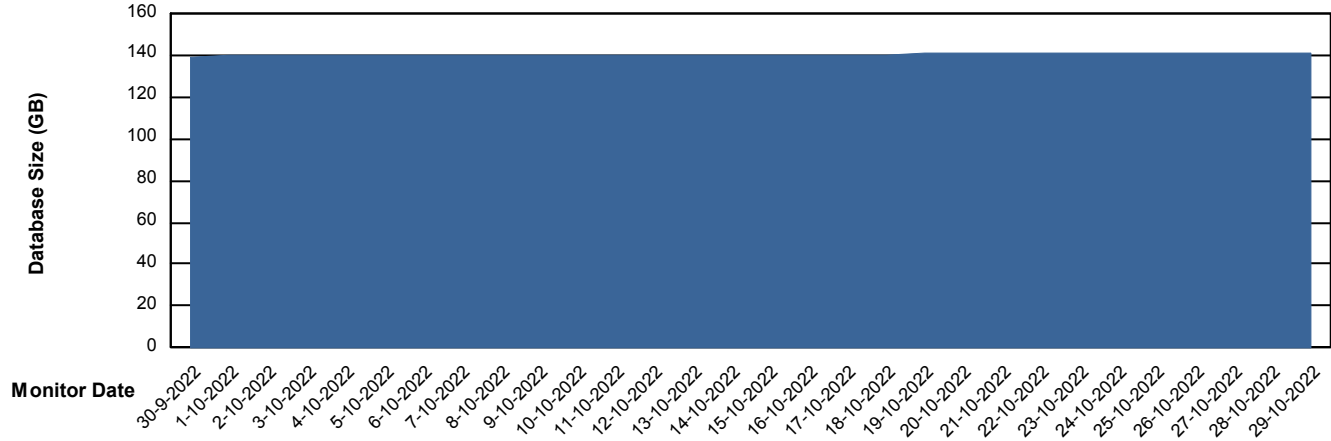
# Weekly SLA Customer Report

Customer AUJ Production  
Database ID 41



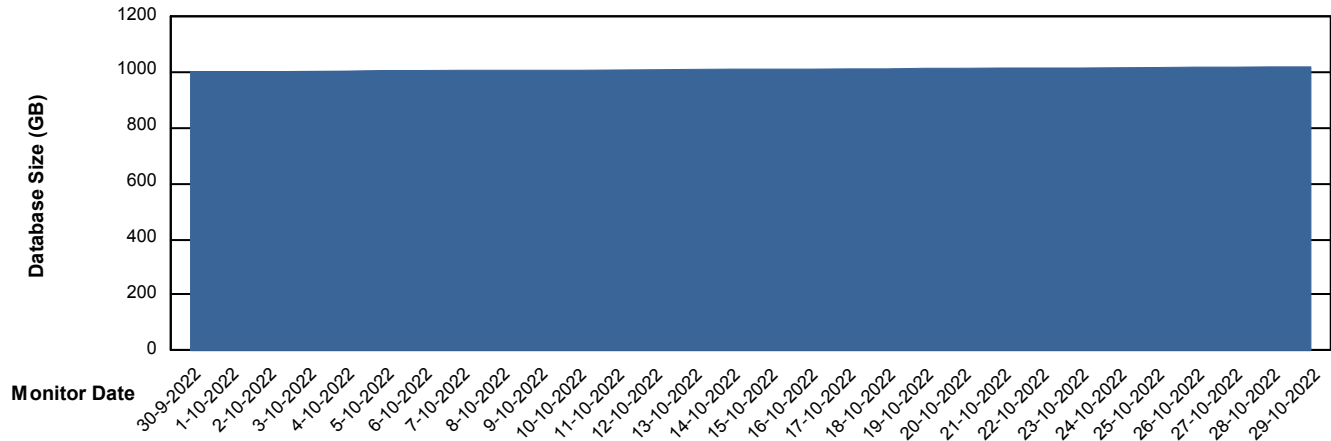
DATABASE SIZE AUJ Prod. BI DB (PABSBI1 server)

### Database growth over last month



DATABASE SIZE AUJ\_DB1\_Primary

### Database growth over last month



# Weekly SLA Customer Report

Customer AUJ Production  
Database ID 41



Database Tablespace AUJ Prod. BI DB (PABSBI1 server)

Date	Tablespace Name	Filesize (Gb)	Usedsize (Gb)	Percentage free
29-10-2022	ABSDATA	140	116	17
	INDX	29	23	22
28-10-2022	ABSDATA	140	116	17
	INDX	29	23	22
27-10-2022	ABSDATA	140	116	17
	INDX	29	23	22
26-10-2022	ABSDATA	140	116	17
	INDX	29	23	22
25-10-2022	ABSDATA	140	116	17
	INDX	29	23	22
24-10-2022	ABSDATA	140	116	17
	INDX	29	23	22
23-10-2022	ABSDATA	140	116	17
	INDX	29	23	22

# Weekly SLA Customer Report

Customer AUJ Production  
 Database ID 41



Database Tablespace AUJ\_DB1\_Primary

Date	Tablespace Name	Filesize (Gb)	Usedsize (Gb)	Percentage free
29-10-2022	ABSDATA	559	467	17
	INDX	674	544	19
28-10-2022	ABSDATA	559	467	17
	INDX	674	544	19
27-10-2022	ABSDATA	559	466	17
	INDX	674	544	19
26-10-2022	ABSDATA	559	466	17
	INDX	674	543	19
25-10-2022	ABSDATA	559	465	17
	INDX	674	543	19
24-10-2022	ABSDATA	559	465	17
	INDX	644	542	16
23-10-2022	ABSDATA	559	465	17
	INDX	644	542	16

BI Status and last ETL error for AUJ Prod. BI DB (PABSBI1 server)

	ma 24/10/2022	di 25/10/2022	wo 26/10/2022	do 27/10/2022	vr 28/10/2022	za 29/10/2022
<b>ABS DataWarehouse ETL Health</b>	OK	OK	OK	OK	OK	OK
<b>ABS DWHStaging ETL Health</b>	OK	OK	OK	OK	OK	OK

# Weekly SLA Customer Report

Customer AUJ Production  
Database ID 41



BI last ETL error for	AUJ Prod. BI DB (PABSBI1 server)
zo, 23-10-2022	None
do, 27-10-2022	None
za, 29-10-2022	None
do, 27-10-2022	None
di, 25-10-2022	None
vr, 28-10-2022	None
vr, 28-10-2022	None
wo, 26-10-2022	None
ma, 24-10-2022	None
di, 25-10-2022	None
wo, 26-10-2022	None
ma, 24-10-2022	None
za, 29-10-2022	None
zo, 23-10-2022	None

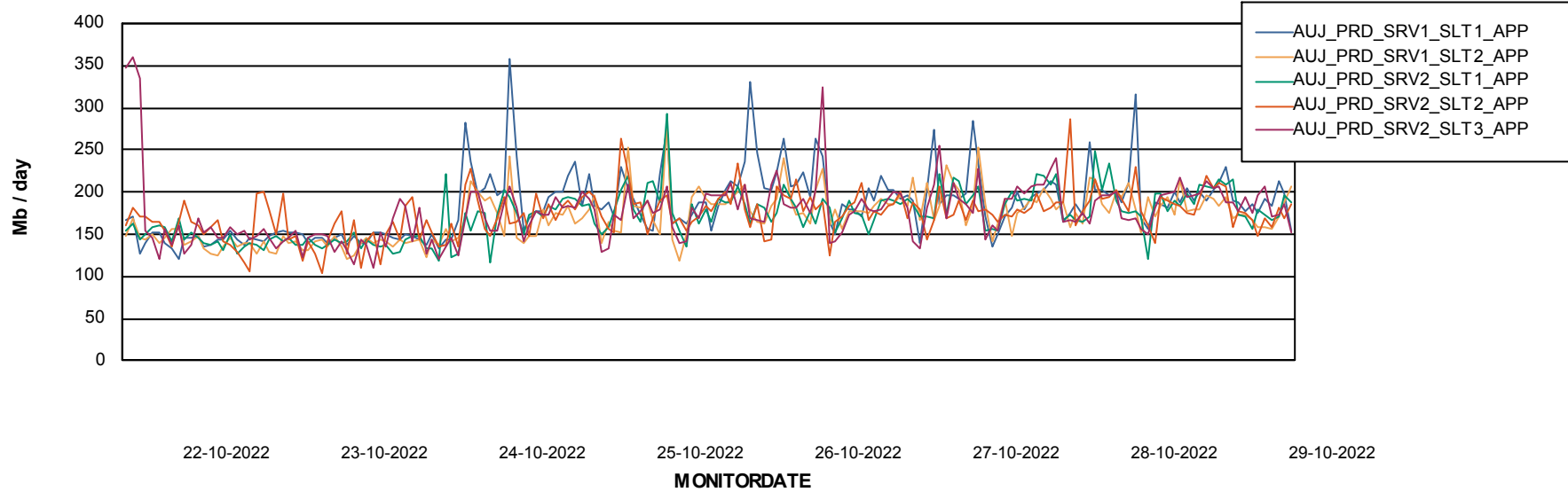
# Weekly SLA Customer Report

Customer AUJ Production  
Database ID 41

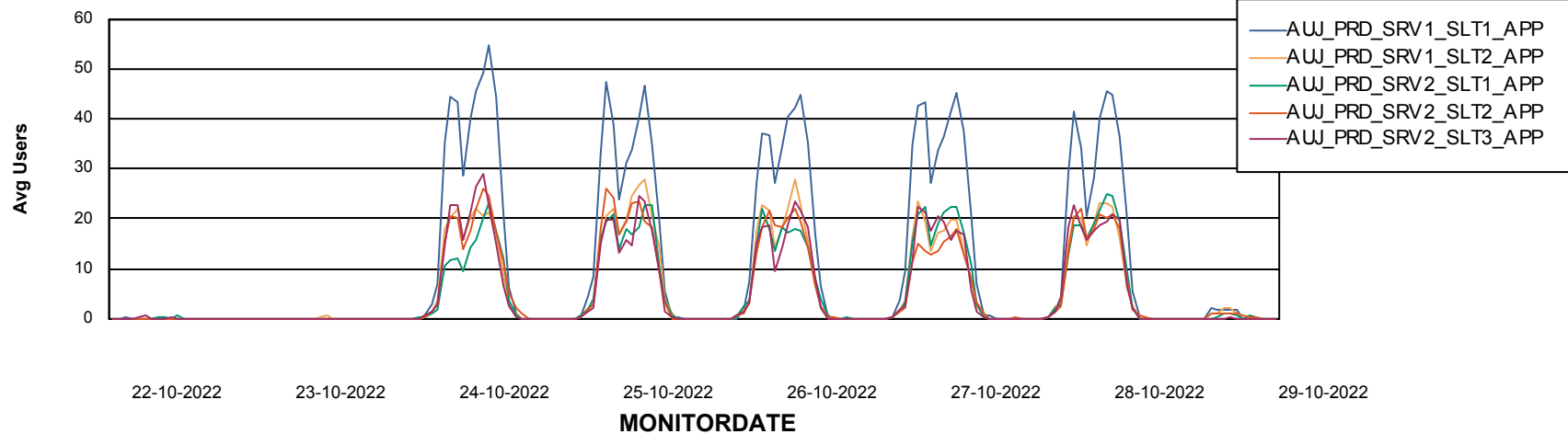


## ABSSolute Application Server Services

### Avg memory used per ABS Server Service



### Avg users per day per ABS server



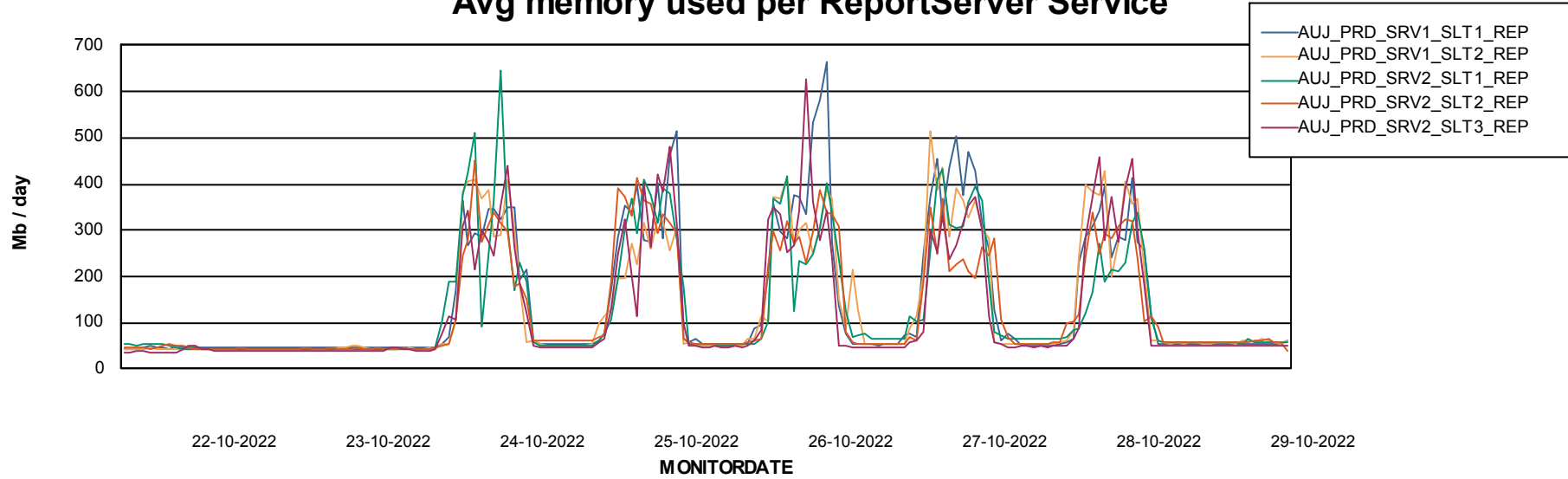
# Weekly SLA Customer Report

Customer AUJ Production  
Database ID 41



## ABSSolute Application ReportServer Services

### Avg memory used per ReportServer Service



### Disaster per ABS component

