

# Weekly SLA Customer Report

Customer KBR\_Production  
Database ID 117



## Harddisk Usage BI-DBSRV

	Free disk space on C: (%)	Total disk space on C: (Gb)	Used disk space on C: (Gb)	Free disk space on D: (%)	Total disk space on D: (Gb)	Used disk space on D: (Gb)	Free disk space on E: (%)	Total disk space on E: (Gb)	Used disk space on E: (Gb)
1-10-2022	27	100	72	90	500	48	56	310	137
30-9-2022	28	100	72	90	500	48	56	310	135
29-9-2022	28	100	72	90	500	48	56	310	135
28-9-2022	28	100	72	90	500	48	56	310	135
27-9-2022	28	100	72	90	500	48	56	310	136
26-9-2022	28	100	72	90	500	48	57	310	134
25-9-2022	28	100	72	90	500	48	56	310	135

## Harddisk Usage KBR\_PRD\_APPSRV1

	Free disk space on C: (%)	Total disk space on C: (Gb)	Used disk space on C: (Gb)
1-10-2022	25	149	113
30-9-2022	25	149	113
29-9-2022	25	149	112
28-9-2022	25	149	112
27-9-2022	25	149	112
26-9-2022	25	149	113
25-9-2022	25	149	113

# Weekly SLA Customer Report

Customer KBR\_Production  
Database ID 117



## Harddisk Usage KBR\_PRD\_APPSRV2

	Free disk space on C: (%)	Total disk space on C: (Gb)	Used disk space on C: (Gb)
1-10-2022	50	99	49
30-9-2022	50	99	49
29-9-2022	50	99	50
28-9-2022	50	99	49
27-9-2022	50	99	50
26-9-2022	50	99	49
25-9-2022	50	99	49

## Harddisk Usage KBR\_PRD\_DB-SRV1

	Free disk space on C: (%)	Total disk space on C: (Gb)	Used disk space on C: (Gb)	Free disk space on D: (%)	Total disk space on D: (Gb)	Used disk space on D: (Gb)	Free disk space on E: (%)	Total disk space on E: (Gb)	Used disk space on E: (Gb)
1-10-2022	40	99	59	94	800	51	88	400	47
30-9-2022	40	99	59	94	800	49	88	400	47
29-9-2022	40	99	59	94	800	49	88	400	47
28-9-2022	40	99	60	94	800	49	88	400	47
27-9-2022	40	99	60	94	800	49	88	400	48
26-9-2022	40	99	60	94	800	49	88	400	49
25-9-2022	40	99	60	94	800	49	88	400	49

# Weekly SLA Customer Report

Customer KBR\_Production  
Database ID 117



## Harddisk Usage KBR\_PRD\_WEBSRV1

	Free disk space on / (%)	Total disk space on / (Gb)	Used disk space on / (Gb)	Free disk space on /boot (%)	Total disk space on /boot (Gb)	Used disk space on /boot (Gb)
1-10-2022	78	55	12	60	1	0
30-9-2022	78	55	12	60	1	0
29-9-2022	78	55	12	60	1	0
28-9-2022	78	55	12	60	1	0
27-9-2022	78	55	12	60	1	0
26-9-2022	78	55	12	60	1	0
25-9-2022	79	55	12	60	1	0

## Harddisk Usage KBR\_PRD\_WEBSRV2

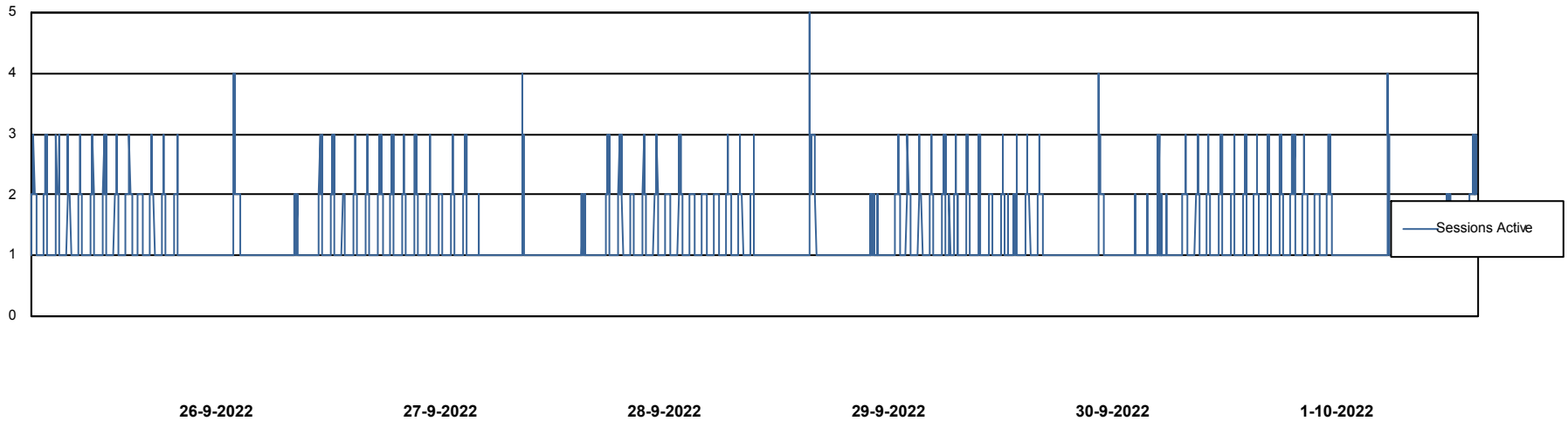
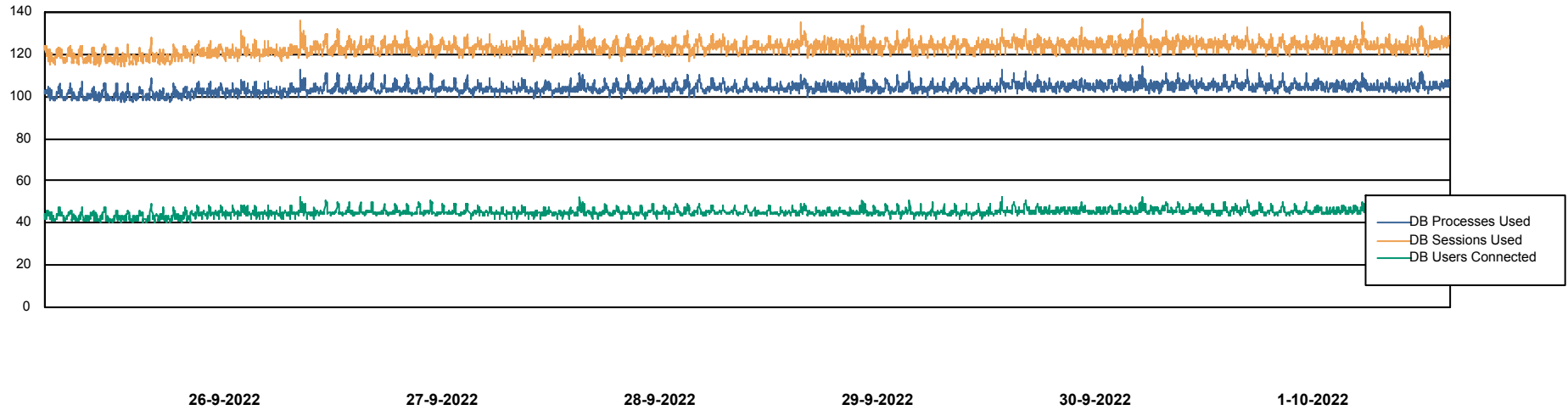
	Free disk space on / (%)	Total disk space on / (Gb)	Used disk space on / (Gb)	Free disk space on /boot (%)	Total disk space on /boot (Gb)	Used disk space on /boot (Gb)
1-10-2022	81	55	10	62	1	0
30-9-2022	81	55	10	62	1	0
29-9-2022	81	55	10	62	1	0
28-9-2022	81	55	10	62	1	0
27-9-2022	81	55	10	62	1	0
26-9-2022	81	55	10	62	1	0
25-9-2022	81	55	10	62	1	0

# Weekly SLA Customer Report

Customer KBR\_Production  
Database ID 117



## Database Performance BI-DBSRV\_DB

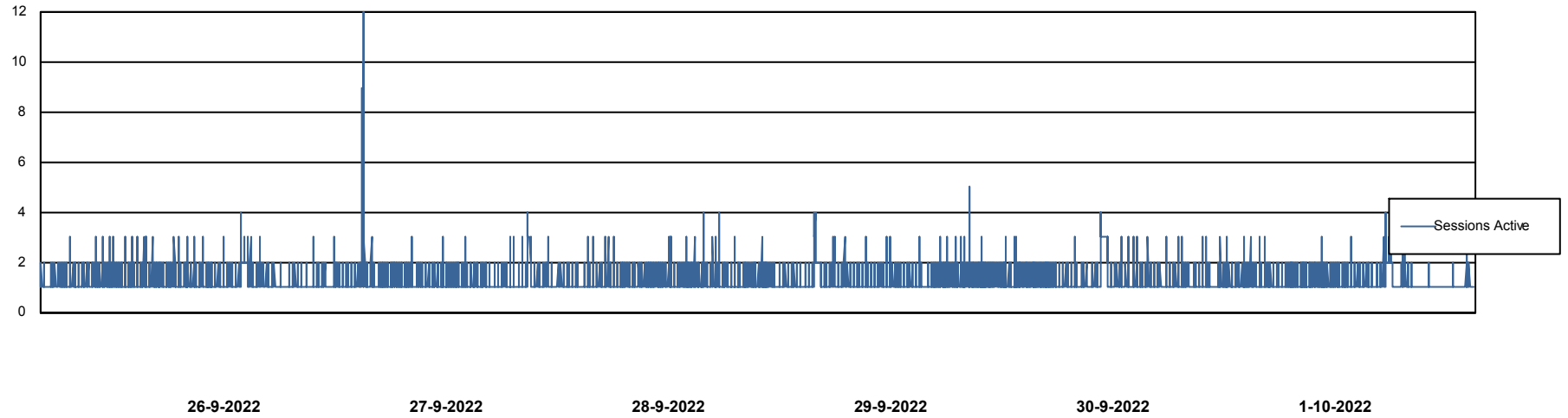
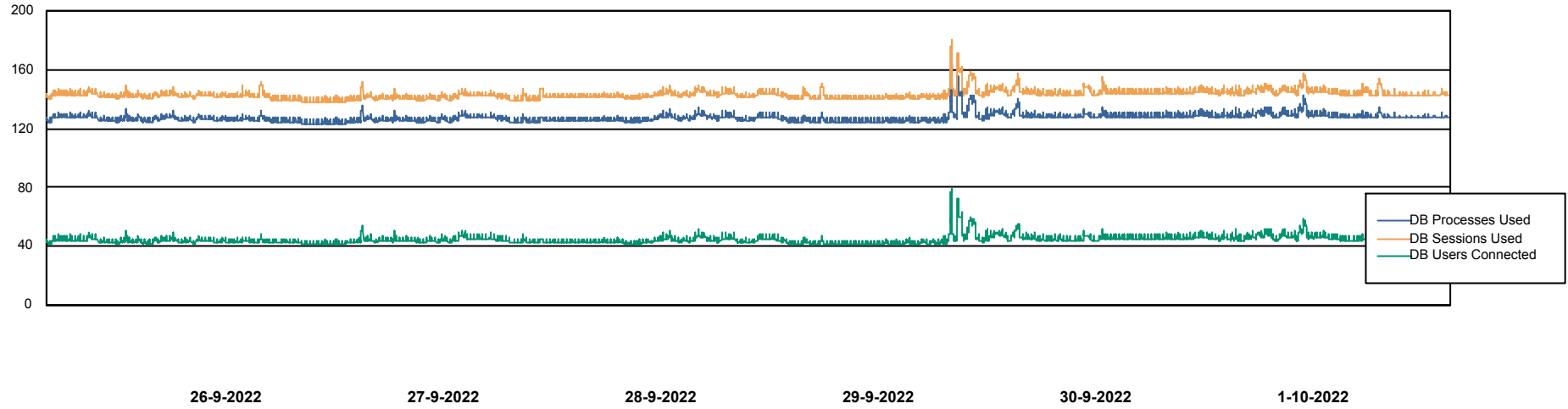


# Weekly SLA Customer Report

Customer KBR\_Production  
Database ID 117



Database Performance KBR\_PRD\_DB-SRV1\_DB



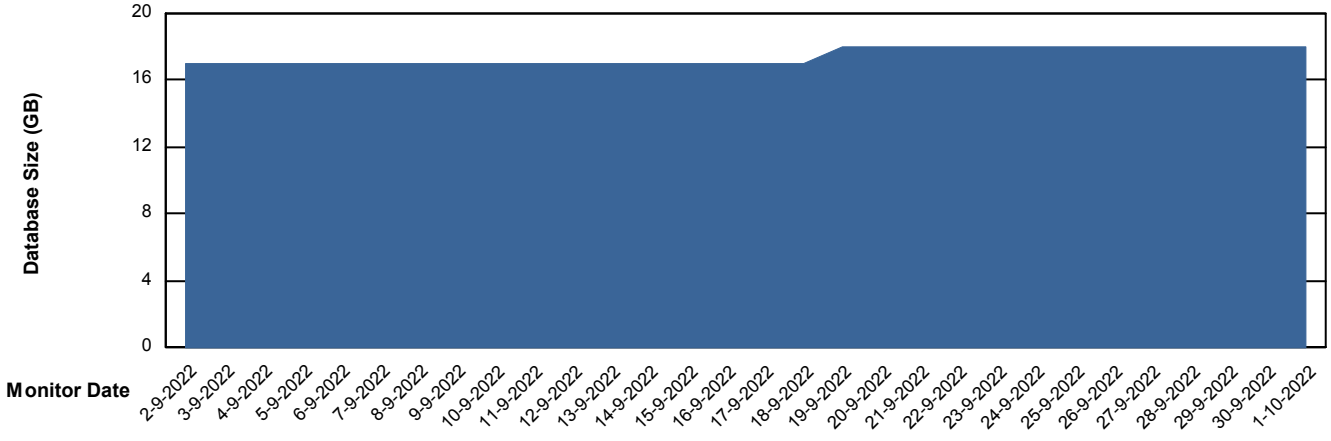
# Weekly SLA Customer Report

Customer KBR\_Production  
Database ID 117



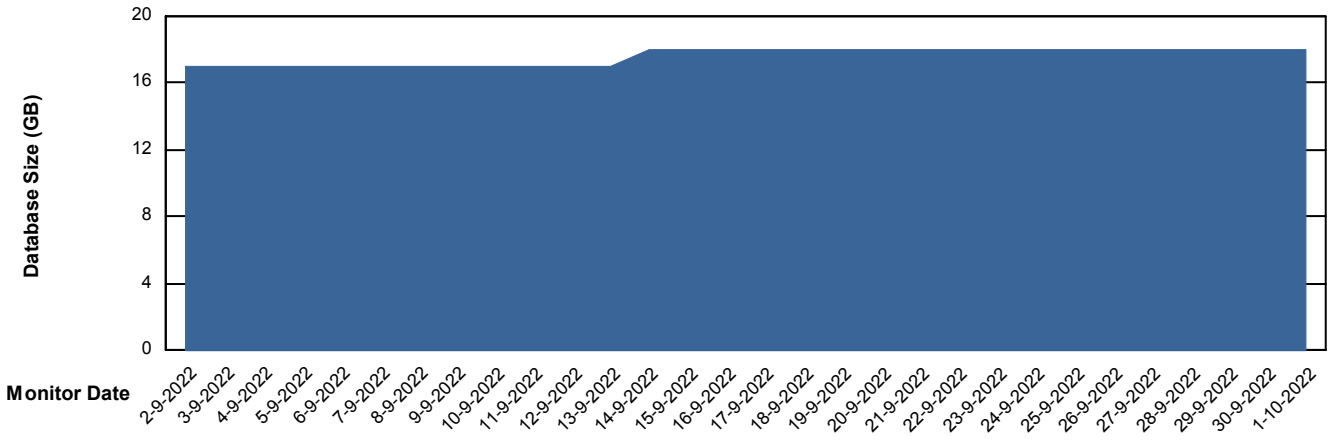
DATABASE SIZE BI-DBSRV\_DB

### Database growth over last month



DATABASE SIZE KBR\_PRD\_DB-SRV1\_DB

### Database growth over last month



# Weekly SLA Customer Report

Customer KBR\_Production  
Database ID 117



Database Tablespace BI-DBSRV\_DB

Date	Tablespace Name	Filesize (Gb)	Usedsize (Gb)	Percentage free
1-10-2022	ABSDATA	9	7	20
	INDX	10	8	21
30-9-2022	ABSDATA	9	7	20
	INDX	10	8	21
29-9-2022	ABSDATA	9	7	20
	INDX	10	8	21
28-9-2022	ABSDATA	9	7	20
	INDX	10	8	21
27-9-2022	ABSDATA	9	7	21
	INDX	10	8	21
26-9-2022	ABSDATA	9	7	21
	INDX	10	8	21
25-9-2022	ABSDATA	9	7	21
	INDX	10	8	22

# Weekly SLA Customer Report

Customer KBR\_Production  
 Database ID 117



Database Tablespace KBR\_PRD\_DB-SRV1\_DB

Date	Tablespace Name	Filesize (Gb)	Usedsize (Gb)	Percentage free
1-10-2022	ABSDATA	14	10	27
	INDX	8	2	79
30-9-2022	ABSDATA	14	10	28
	INDX	8	2	79
29-9-2022	ABSDATA	12	10	16
	INDX	8	2	79
28-9-2022	ABSDATA	12	10	16
	INDX	8	2	79
27-9-2022	ABSDATA	12	10	17
	INDX	8	2	79
26-9-2022	ABSDATA	12	10	18
	INDX	8	2	79
25-9-2022	ABSDATA	12	10	18
	INDX	8	2	79

BI Status and last ETL error for BI-DBSRV\_DB

	ma 26/9/2022	di 27/9/2022	wo 28/9/2022	do 29/9/2022	vr 30/9/2022	za 1/10/2022
<b>ABS DataWarehouse ETL Health</b>	OK	OK	OK	OK	OK	OK
<b>ABS DWHStaging ETL Health</b>	OK	OK	OK	OK	OK	OK

# Weekly SLA Customer Report

Customer KBR\_Production  
Database ID 117



BI last ETL error for	BI-DBSRV_DB
di, 27-09-2022	None
wo, 28-09-2022	None
ma, 26-09-2022	None
ma, 26-09-2022	None
do, 29-09-2022	None
za, 1-10-2022	None
do, 29-09-2022	None
za, 1-10-2022	None
vr, 30-09-2022	None
zo, 25-09-2022	None
di, 27-09-2022	None
zo, 25-09-2022	None
wo, 28-09-2022	None
vr, 30-09-2022	None

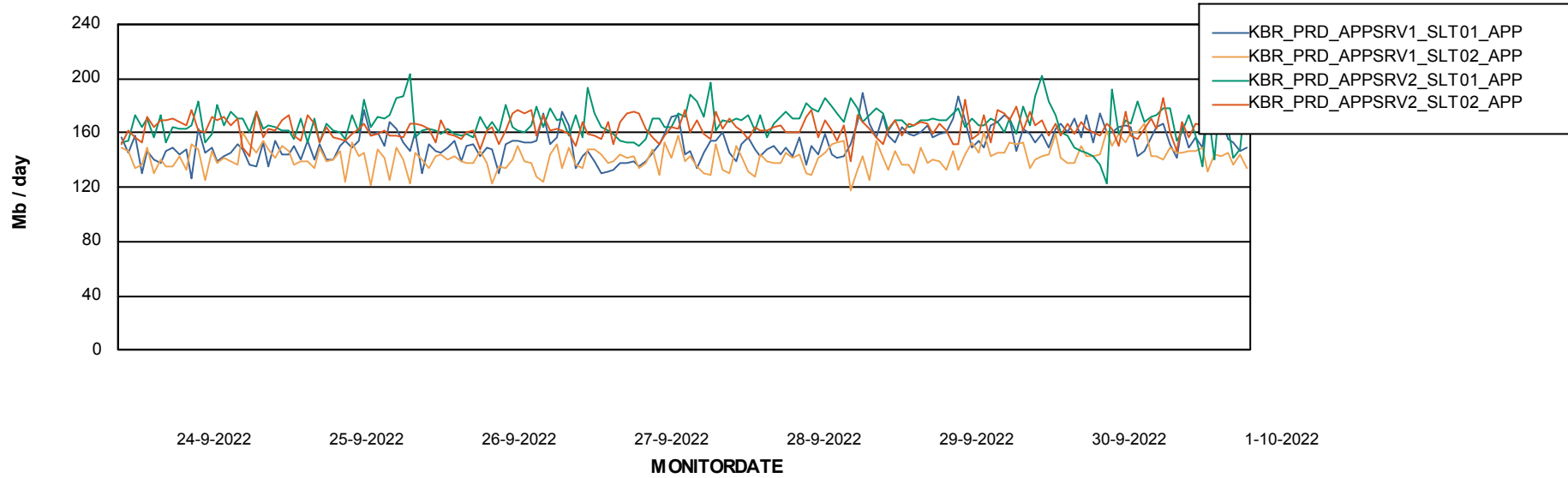
# Weekly SLA Customer Report

Customer KBR\_Production  
Database ID 117



## ABSSolute Application Server Services

### Avg memory used per ABS Server Service



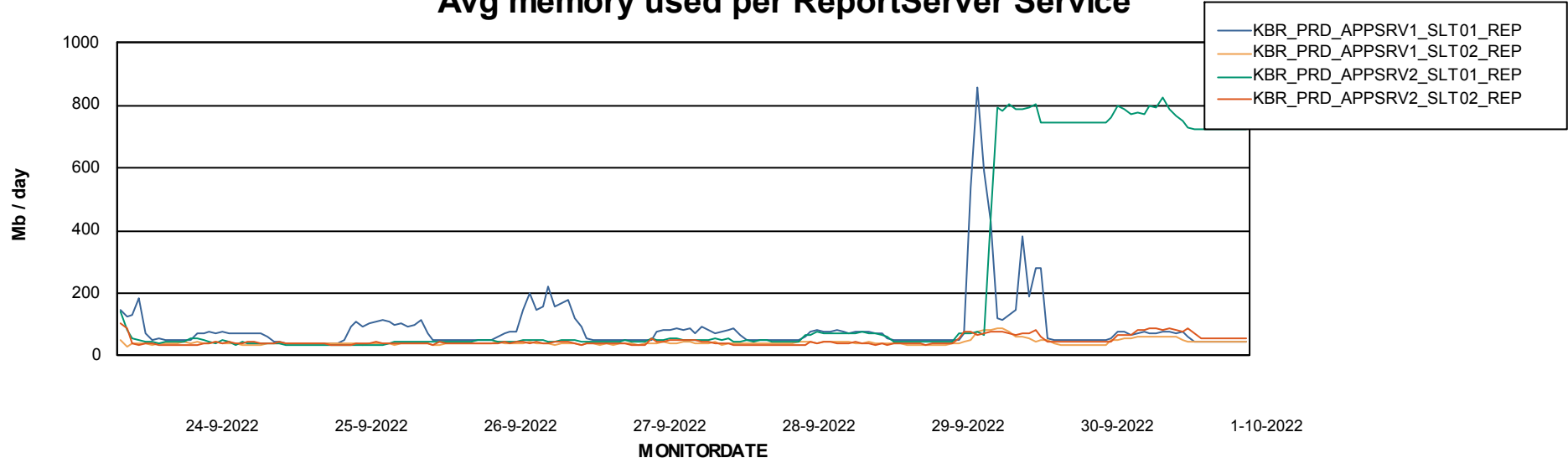
# Weekly SLA Customer Report

Customer KBR\_Production  
Database ID 117

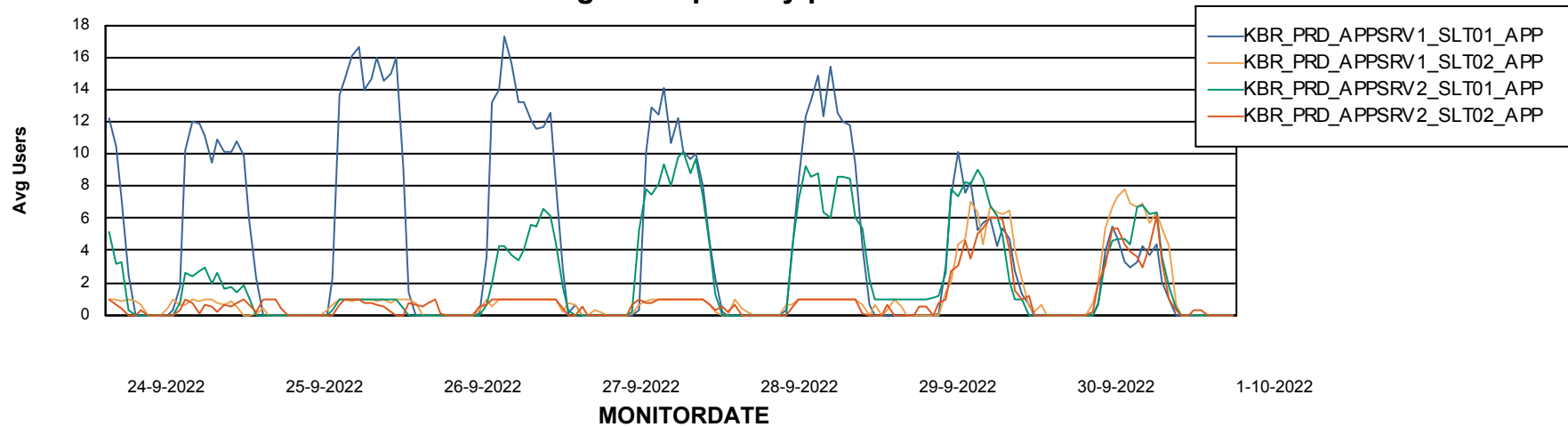


## ABSSolute Application Server Services

### Avg memory used per ReportServer Service



### Avg users per day per ABS server



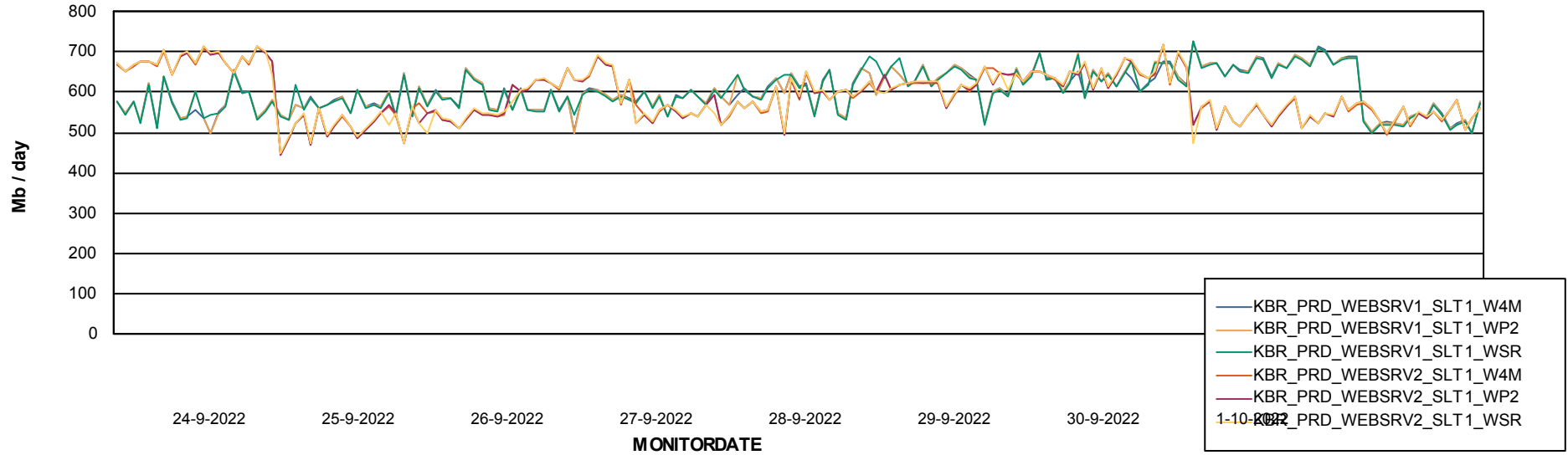
# Weekly SLA Customer Report

Customer KBR\_Production  
Database ID 117



## ABSSolute Web Component Services

### Avg memory used per ABS Web component



# Weekly SLA Customer Report

Customer KBR\_Production  
Database ID 117



## Disaster per ABS component

