

Weekly SLA Customer Report

Customer KBR_Production
Database ID 117



Harddisk Usage BI-DBSRV

	Free disk space on C: (%)	Total disk space on C: (Gb)	Used disk space on C: (Gb)	Free disk space on D: (%)	Total disk space on D: (Gb)	Used disk space on D: (Gb)	Free disk space on E: (%)	Total disk space on E: (Gb)	Used disk space on E: (Gb)
17-9-2022	27	100	72	90	500	48	56	310	135
16-9-2022	28	100	71	90	500	48	57	310	134
15-9-2022	29	100	71	90	500	48	56	310	135
14-9-2022	27	100	72	90	500	48	56	310	136
13-9-2022	26	100	73	90	500	48	56	310	136
12-9-2022	27	100	73	90	500	48	57	310	133
11-9-2022	27	100	73	90	500	48	56	310	135

Harddisk Usage KBR_PRD_APPSRV1

	Free disk space on C: (%)	Total disk space on C: (Gb)	Used disk space on C: (Gb)
17-9-2022	36	149	95
16-9-2022	36	149	95
15-9-2022	36	149	95
14-9-2022	38	149	93
13-9-2022	38	149	92
12-9-2022	39	149	92
11-9-2022	39	149	91

Weekly SLA Customer Report

Customer KBR_Production
Database ID 117



Harddisk Usage KBR_PRD_APPSRV2

	Free disk space on C: (%)	Total disk space on C: (Gb)	Used disk space on C: (Gb)
17-9-2022	17	99	82
16-9-2022	23	99	76
15-9-2022	28	99	72
14-9-2022	31	99	68
13-9-2022	32	99	68
12-9-2022	32	99	67
11-9-2022	32	99	67

Harddisk Usage KBR_PRD_DB-SRV1

	Free disk space on C: (%)	Total disk space on C: (Gb)	Used disk space on C: (Gb)	Free disk space on D: (%)	Total disk space on D: (Gb)	Used disk space on D: (Gb)	Free disk space on E: (%)	Total disk space on E: (Gb)	Used disk space on E: (Gb)
17-9-2022	37	99	63	94	800	49	89	400	45
16-9-2022	37	99	63	94	800	49	89	400	45
15-9-2022	37	99	63	94	800	49	89	400	44
14-9-2022	38	99	61	94	800	49	89	400	43
13-9-2022	39	99	61	94	800	49	89	400	43
12-9-2022	39	99	61	94	800	49	89	400	44
11-9-2022	39	99	61	94	800	49	89	400	45

Weekly SLA Customer Report

Customer KBR_Production
Database ID 117



Harddisk Usage KBR_PRD_WEBSRV1

	Free disk space on / (%)	Total disk space on / (Gb)	Used disk space on / (Gb)	Free disk space on /boot (%)	Total disk space on /boot (Gb)	Used disk space on /boot (Gb)
17-9-2022	79	55	12	60	1	0
16-9-2022	79	55	12	60	1	0
15-9-2022	79	55	12	60	1	0
14-9-2022	79	55	11	60	1	0
13-9-2022	79	55	11	60	1	0
12-9-2022	79	55	11	60	1	0
11-9-2022	79	55	11	60	1	0

Harddisk Usage KBR_PRD_WEBSRV2

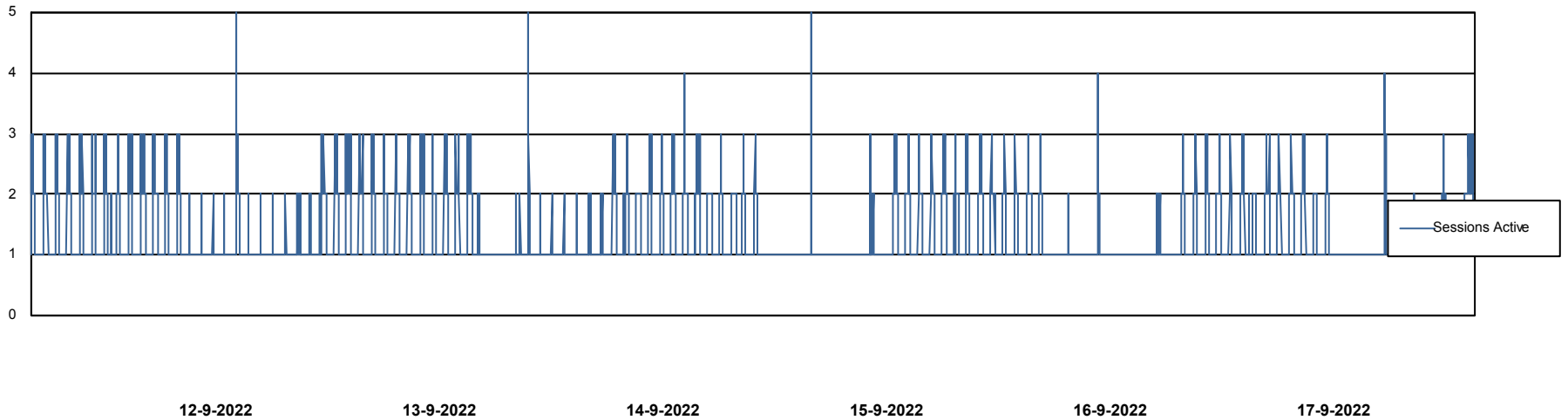
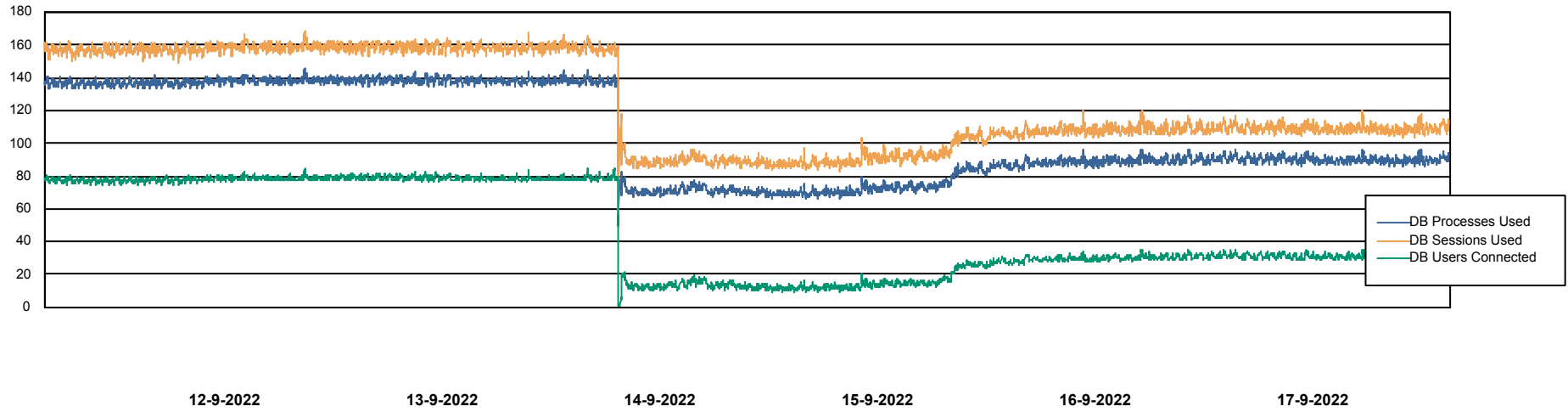
	Free disk space on / (%)	Total disk space on / (Gb)	Used disk space on / (Gb)	Free disk space on /boot (%)	Total disk space on /boot (Gb)	Used disk space on /boot (Gb)
17-9-2022	82	55	10	62	1	0
16-9-2022	82	55	10	62	1	0
15-9-2022	82	55	10	62	1	0
14-9-2022	82	55	10	62	1	0
13-9-2022	82	55	10	62	1	0
12-9-2022	82	55	10	62	1	0
11-9-2022	82	55	10	62	1	0

Weekly SLA Customer Report

Customer KBR_Production
Database ID 117



Database Performance BI-DBSRV_DB

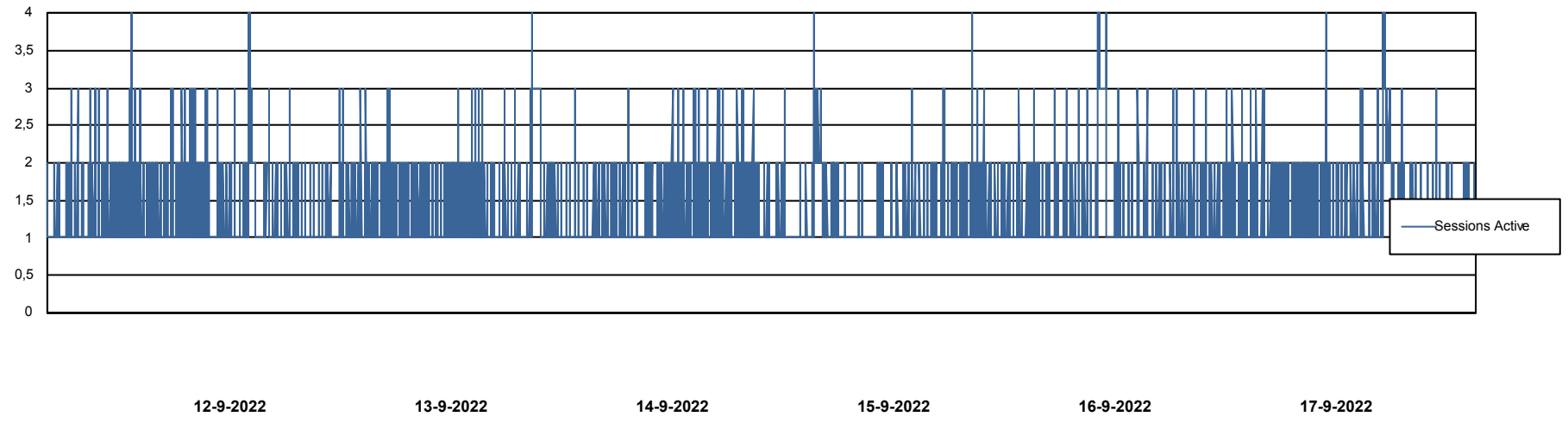
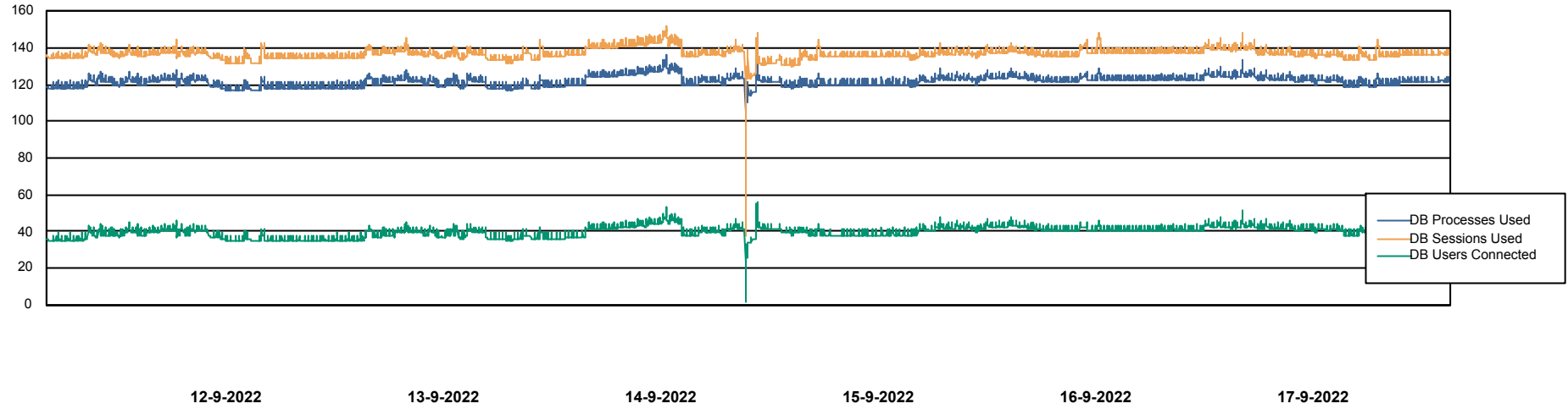


Weekly SLA Customer Report

Customer KBR_Production
Database ID 117



Database Performance KBR_PRD_DB-SRV1_DB



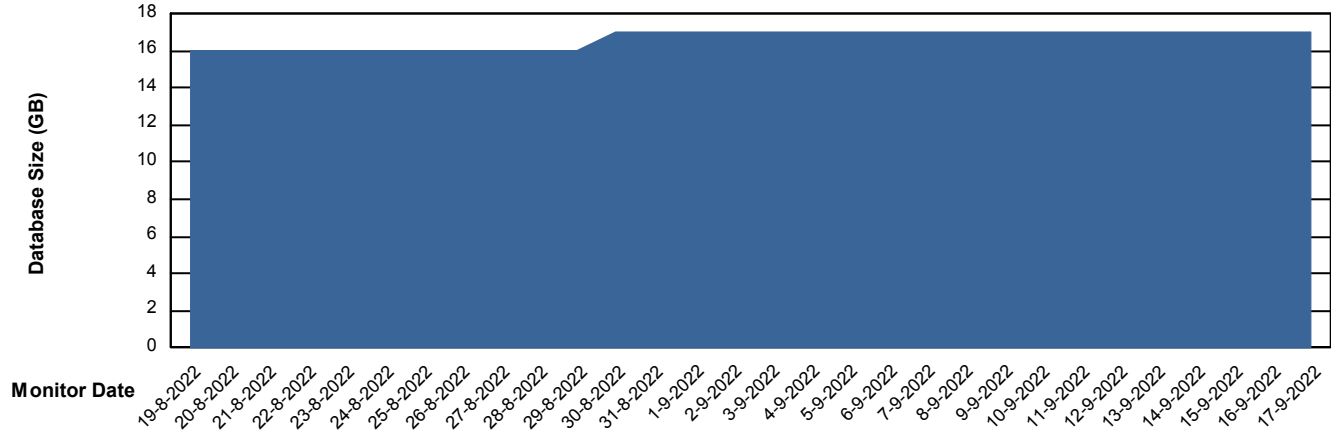
Weekly SLA Customer Report

Customer KBR_Production
Database ID 117



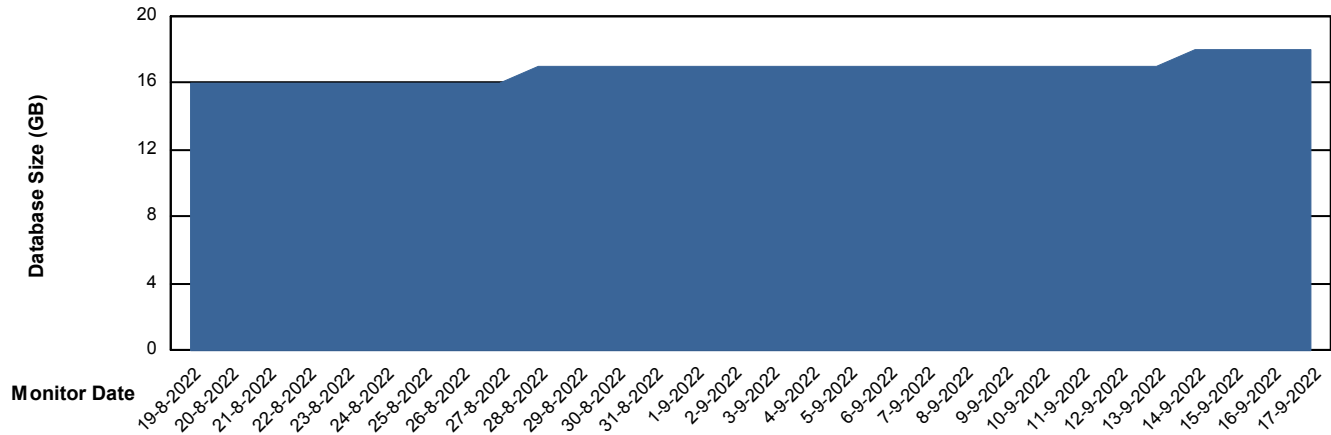
DATABASE SIZE BI-DBSRV_DB

Database growth over last month



DATABASE SIZE KBR_PRD_DB-SRV1_DB

Database growth over last month



Weekly SLA Customer Report

Customer KBR_Production
 Database ID 117



Database Tablespace BI-DBSRV_DB

Date	Tablespace Name	Filesize (Gb)	Usedsize (Gb)	Percentage free
17-9-2022	ABSDATA	9	7	23
	INDX	10	8	23
16-9-2022	ABSDATA	9	7	23
	INDX	10	8	23
15-9-2022	ABSDATA	9	7	23
	INDX	10	8	23
14-9-2022	ABSDATA	9	7	23
	INDX	10	8	24
13-9-2022	ABSDATA	9	7	23
	INDX	10	8	24
12-9-2022	ABSDATA	9	7	24
	INDX	10	8	24
11-9-2022	ABSDATA	9	7	24
	INDX	10	8	25

Weekly SLA Customer Report

Customer KBR_Production
 Database ID 117



Database Tablespace KBR_PRD_DB-SRV1_DB

Date	Tablespace Name	Filesize (Gb)	Usedsize (Gb)	Percentage free
17-9-2022	ABSDATA	12	10	20
	INDX	8	2	80
16-9-2022	ABSDATA	12	9	21
	INDX	8	2	80
15-9-2022	ABSDATA	12	9	22
	INDX	8	2	80
14-9-2022	ABSDATA	12	9	22
	INDX	8	2	80
13-9-2022	ABSDATA	12	9	23
	INDX	8	2	80
12-9-2022	ABSDATA	12	9	23
	INDX	8	2	80
11-9-2022	ABSDATA	12	9	24
	INDX	8	2	80

BI Status and last ETL error for BI-DBSRV_DB

	ma 12/9/2022	di 13/9/2022	wo 14/9/2022	do 15/9/2022	vr 16/9/2022	za 17/9/2022
ABS DataWarehouse ETL Health	OK	OK	OK	OK	OK	OK
ABS DWHStaging ETL Health	OK	OK	OK	OK	OK	OK

Weekly SLA Customer Report

Customer KBR_Production
Database ID 117



BI last ETL error for	BI-DBSRV_DB
do, 15-09-2022	None
wo, 14-09-2022	None
ma, 12-09-2022	None
vr, 16-09-2022	None
di, 13-09-2022	None
wo, 14-09-2022	None
vr, 16-09-2022	None
zo, 11-09-2022	None
di, 13-09-2022	None
za, 17-09-2022	None
zo, 11-09-2022	None
do, 15-09-2022	None
ma, 12-09-2022	None
za, 17-09-2022	None

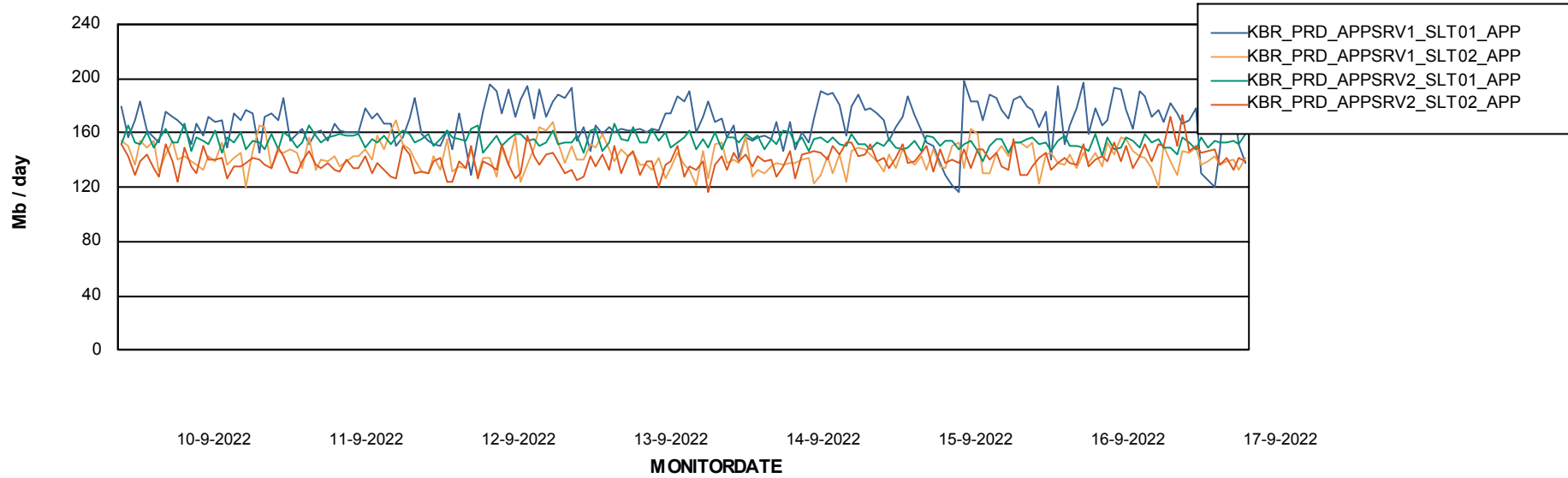
Weekly SLA Customer Report

Customer KBR_Production
Database ID 117



ABSSolute Application Server Services

Avg memory used per ABS Server Service



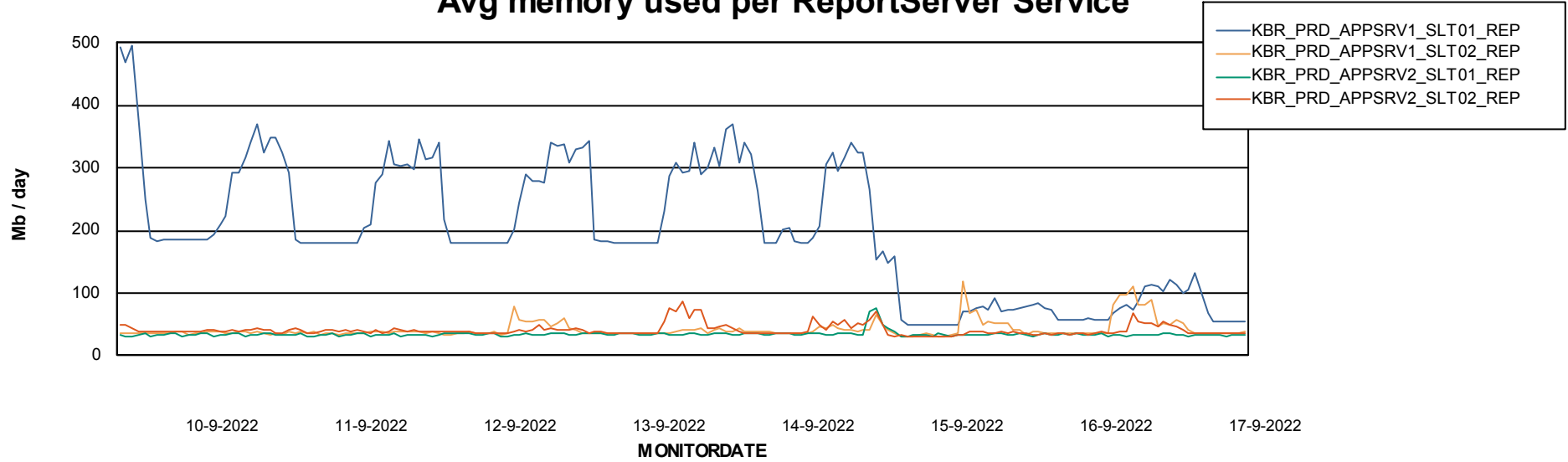
Weekly SLA Customer Report

Customer KBR_Production
Database ID 117

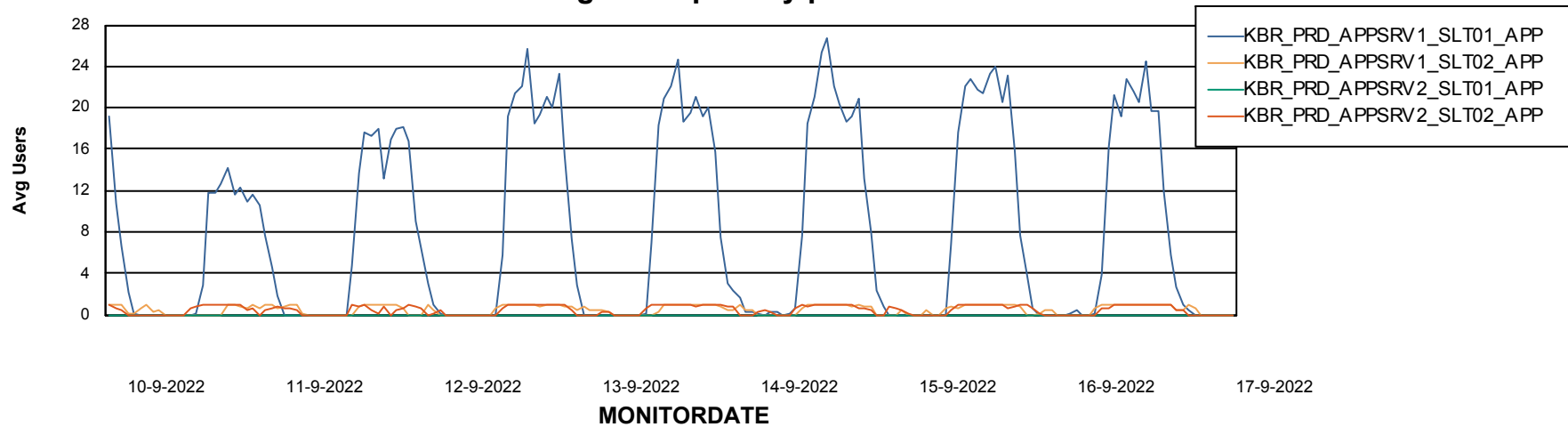


ABSSolute Application Server Services

Avg memory used per ReportServer Service



Avg users per day per ABS server



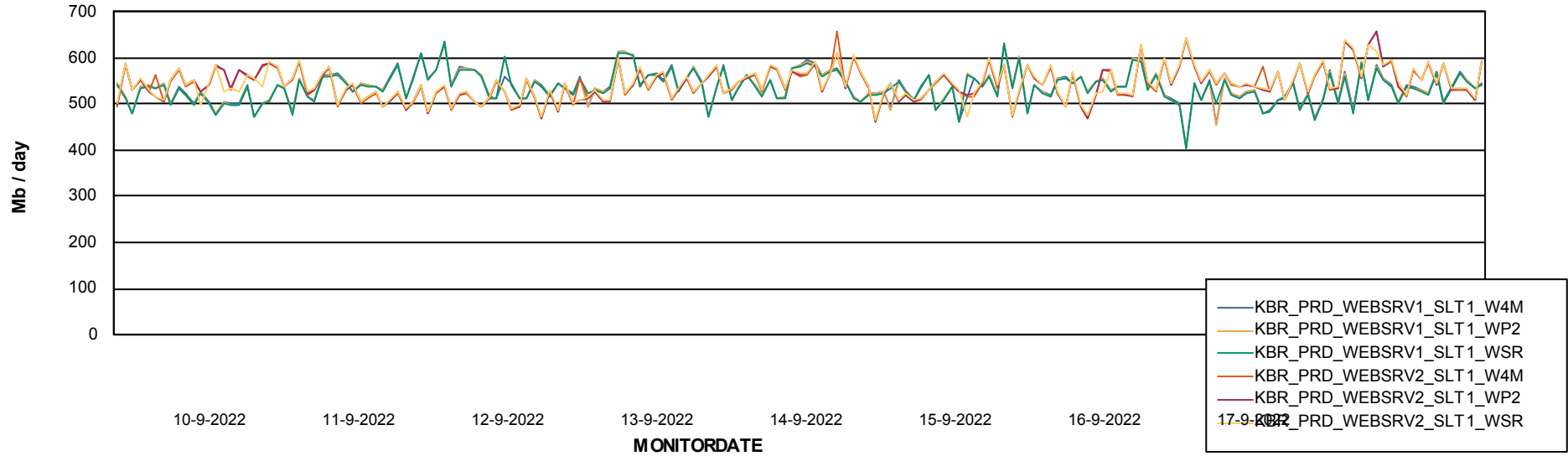
Weekly SLA Customer Report

Customer KBR_Production
Database ID 117



ABSSolute Web Component Services

Avg memory used per ABS Web component



Weekly SLA Customer Report

Customer KBR_Production
Database ID 117



Disaster per ABS component

