

# Weekly SLA Customer Report

Customer KBR\_Production  
Database ID 117



## Harddisk Usage BI-DBSRV

	Free disk space on C: (%)	Total disk space on C: (Gb)	Used disk space on C: (Gb)	Free disk space on D: (%)	Total disk space on D: (Gb)	Used disk space on D: (Gb)	Free disk space on E: (%)	Total disk space on E: (Gb)	Used disk space on E: (Gb)
10-9-2022	27	100	73	90	500	48	56	310	138
9-9-2022	27	100	73	90	500	48	56	310	137
8-9-2022	26	100	73	90	500	48	55	310	139
7-9-2022	26	100	73	91	500	47	54	310	142
6-9-2022	26	100	73	91	500	47	53	310	145
5-9-2022	26	100	73	91	500	47	54	310	142
4-9-2022	26	100	73	91	500	47	54	310	144

## Harddisk Usage KBR\_PRD\_APPSRV1

	Free disk space on C: (%)	Total disk space on C: (Gb)	Used disk space on C: (Gb)
10-9-2022	39	149	91
9-9-2022	39	149	91
8-9-2022	39	149	90
7-9-2022	39	149	90
6-9-2022	39	149	90
5-9-2022	40	149	90
4-9-2022	40	149	90

# Weekly SLA Customer Report

Customer KBR\_Production  
 Database ID 117



Harddisk Usage KBR\_PRD\_APPSrv2

	Free disk space on C: (%)	Total disk space on C: (Gb)	Used disk space on C: (Gb)
10-9-2022	32	99	67
9-9-2022	32	99	67
8-9-2022	32	99	68
7-9-2022	32	99	67
6-9-2022	32	99	67
5-9-2022	32	99	67
4-9-2022	32	99	67

Harddisk Usage KBR\_PRD\_DB-SRV1

	Free disk space on C: (%)	Total disk space on C: (Gb)	Used disk space on C: (Gb)	Free disk space on D: (%)	Total disk space on D: (Gb)	Used disk space on D: (Gb)	Free disk space on E: (%)	Total disk space on E: (Gb)	Used disk space on E: (Gb)
10-9-2022	39	99	61	94	800	49	88	400	46
9-9-2022	39	99	61	94	800	49	88	400	46
8-9-2022	39	99	61	94	800	49	88	400	47
7-9-2022	39	99	61	94	800	49	88	400	49
6-9-2022	39	99	61	94	800	49	88	400	49
5-9-2022	39	99	61	94	800	49	88	400	48
4-9-2022	39	99	61	94	800	49	88	400	47

# Weekly SLA Customer Report

Customer KBR\_Production  
Database ID 117



## Harddisk Usage KBR\_PRD\_WEBSRV1

	Free disk space on / (%)	Total disk space on / (Gb)	Used disk space on / (Gb)	Free disk space on /boot (%)	Total disk space on /boot (Gb)	Used disk space on /boot (Gb)
10-9-2022	80	55	11	60	1	0
9-9-2022	80	55	11	60	1	0
8-9-2022	80	55	11	60	1	0
7-9-2022	80	55	11	60	1	0
6-9-2022	80	55	11	60	1	0
5-9-2022	80	55	11	60	1	0
4-9-2022	80	55	11	60	1	0

## Harddisk Usage KBR\_PRD\_WEBSRV2

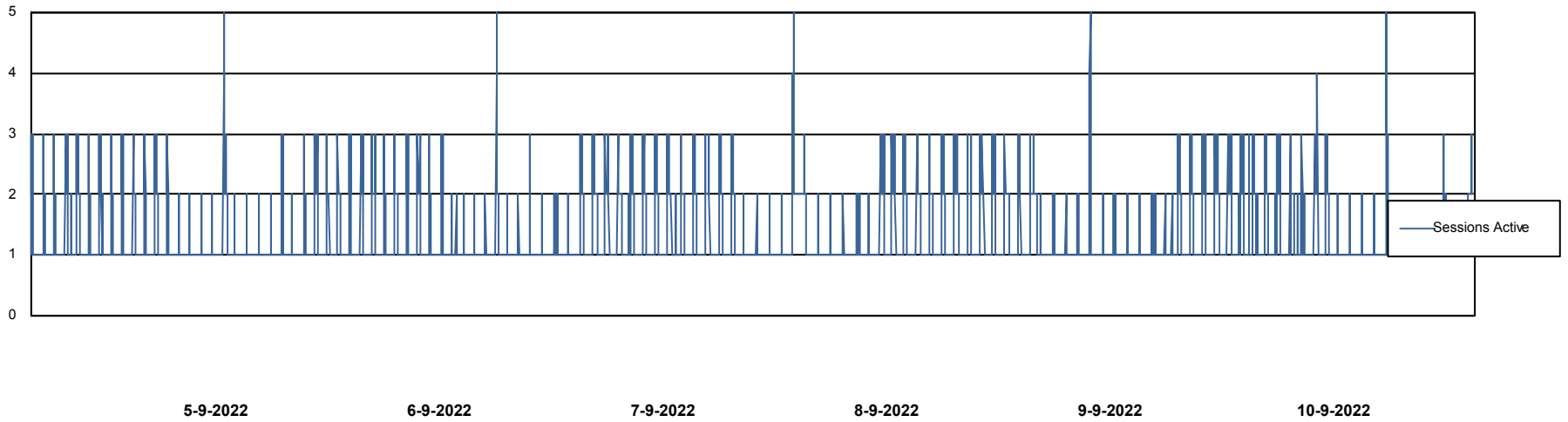
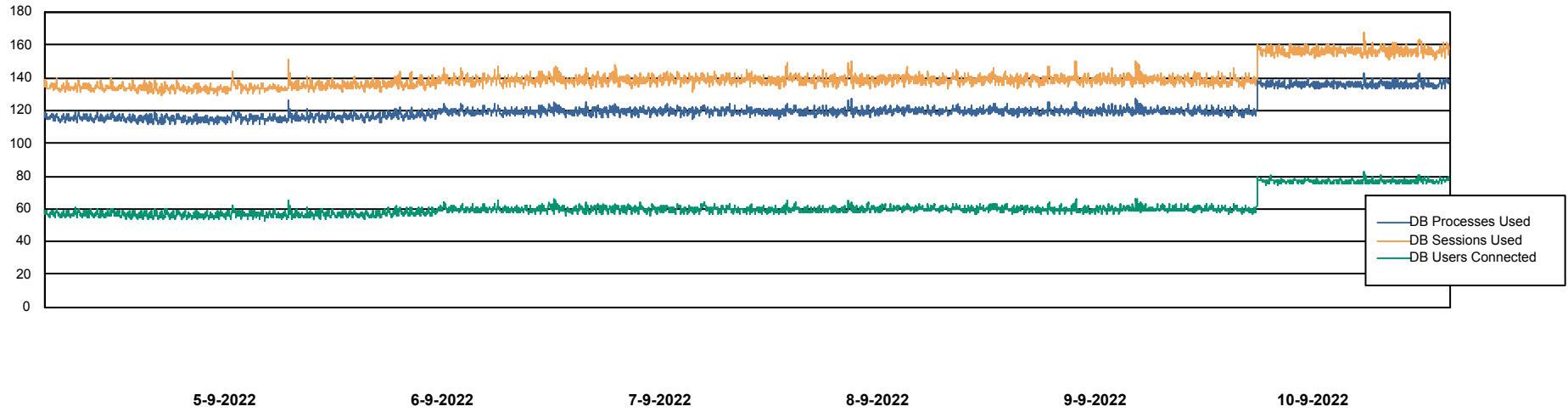
	Free disk space on / (%)	Total disk space on / (Gb)	Used disk space on / (Gb)	Free disk space on /boot (%)	Total disk space on /boot (Gb)	Used disk space on /boot (Gb)
10-9-2022	82	55	10	62	1	0
9-9-2022	82	55	10	62	1	0
8-9-2022	82	55	10	62	1	0
7-9-2022	83	55	10	62	1	0
6-9-2022	83	55	10	62	1	0
5-9-2022	83	55	10	62	1	0
4-9-2022	83	55	10	62	1	0

# Weekly SLA Customer Report

Customer KBR\_Production  
Database ID 117



## Database Performance BI-DBSRV\_DB

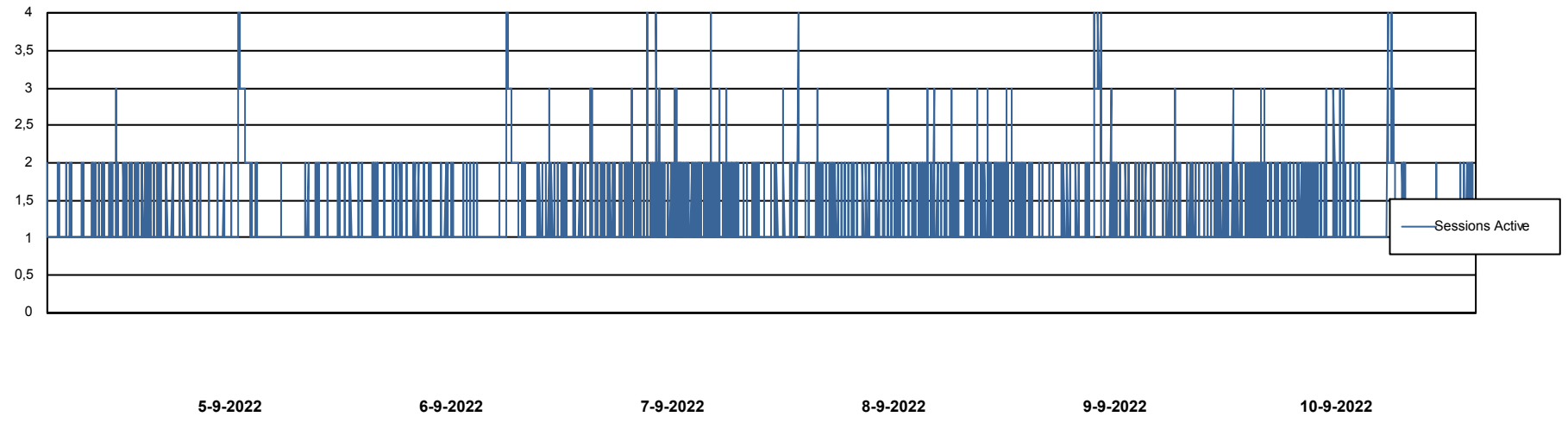
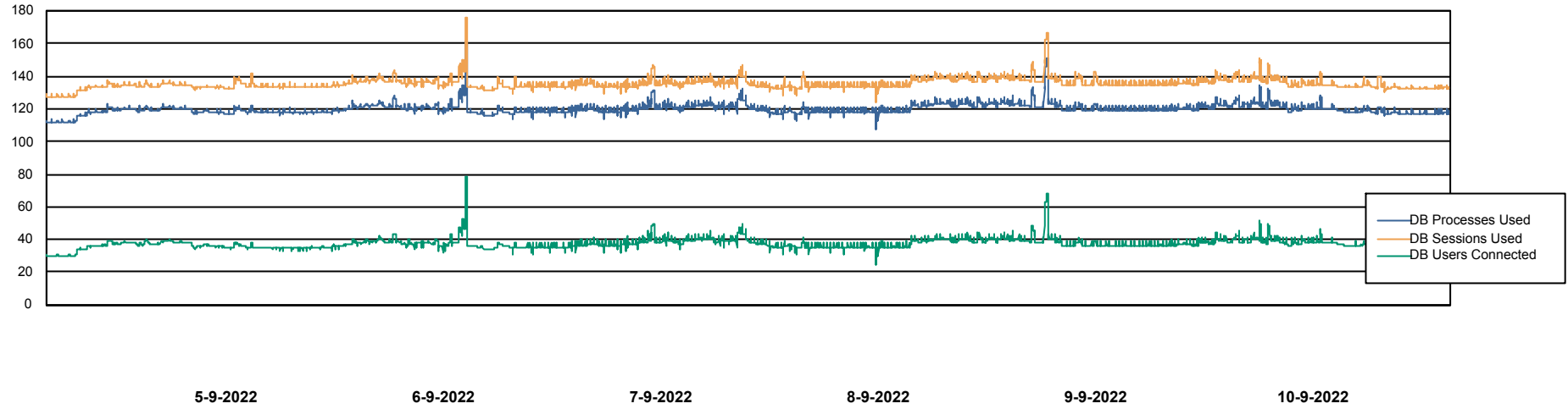


# Weekly SLA Customer Report

Customer KBR\_Production  
Database ID 117



## Database Performance KBR\_PRD\_DB-SRV1\_DB



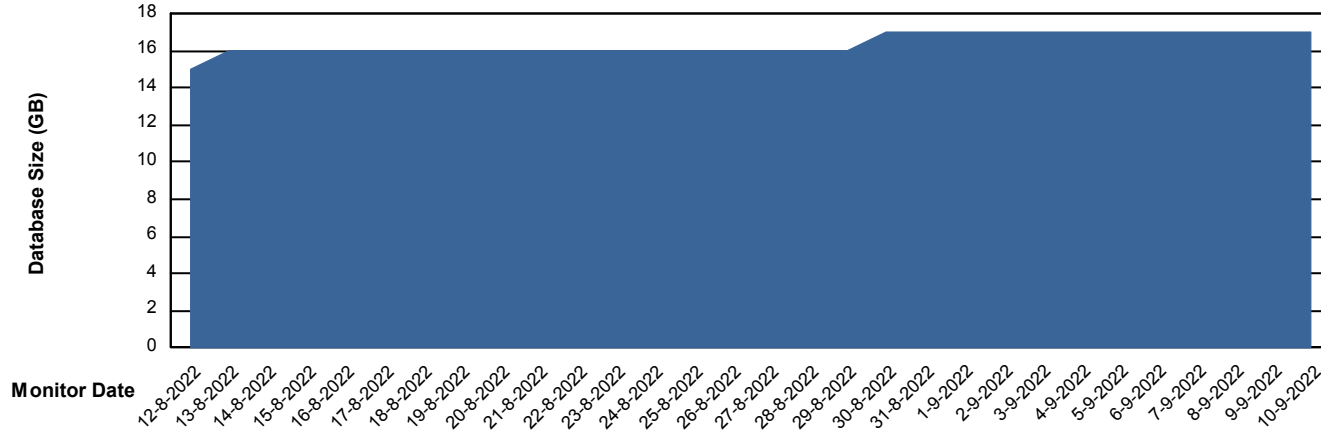
# Weekly SLA Customer Report

Customer KBR\_Production  
Database ID 117



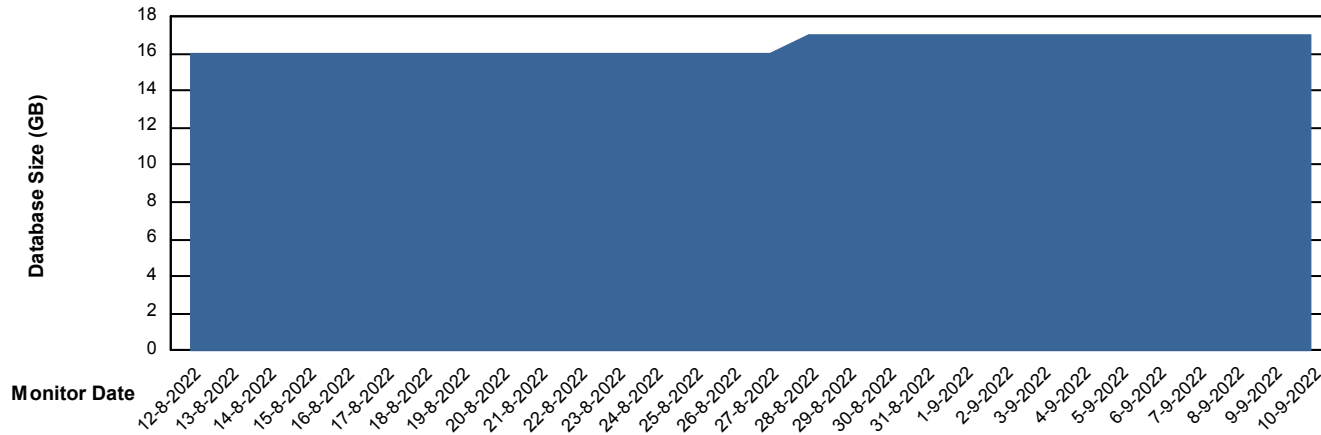
DATABASE SIZE BI-DBSRV\_DB

### Database growth over last month



DATABASE SIZE KBR\_PRD\_DB-SRV1\_DB

### Database growth over last month



# Weekly SLA Customer Report

Customer KBR\_Production  
Database ID 117



## Database Tablespace BI-DBSRV\_DB

Date	Tablespace Name	Filesize (Gb)	Usedsize (Gb)	Percentage free
10-9-2022	ABSDATA	9	7	24
	INDX	10	8	25
9-9-2022	ABSDATA	9	7	24
	INDX	10	8	25
8-9-2022	ABSDATA	9	7	25
	INDX	10	7	25
7-9-2022	ABSDATA	9	7	25
	INDX	10	7	25
6-9-2022	ABSDATA	8	7	15
	INDX	10	7	25
5-9-2022	ABSDATA	8	7	16
	INDX	10	7	25
4-9-2022	ABSDATA	8	7	16
	INDX	10	7	26

# Weekly SLA Customer Report

Customer KBR\_Production  
 Database ID 117



Database Tablespace KBR\_PRD\_DB-SRV1\_DB

Date	Tablespace Name	Filesize (Gb)	Usedsize (Gb)	Percentage free
10-9-2022	ABSDATA	12	9	23
	INDX	8	2	80
9-9-2022	ABSDATA	12	9	24
	INDX	8	2	80
8-9-2022	ABSDATA	12	9	25
	INDX	8	2	80
7-9-2022	ABSDATA	12	9	25
	INDX	8	2	80
6-9-2022	ABSDATA	12	9	26
	INDX	8	2	80
5-9-2022	ABSDATA	12	9	26
	INDX	8	2	80
4-9-2022	ABSDATA	12	9	27
	INDX	8	2	81

BI Status and last ETL error for BI-DBSRV\_DB

	ma 5/9/2022	di 6/9/2022	wo 7/9/2022	do 8/9/2022	vr 9/9/2022	za 10/9/2022
<b>ABS DataWarehouse ETL Health</b>	OK	OK	OK	OK	OK	OK
<b>ABS DWHStaging ETL Health</b>	OK	OK	OK	OK	OK	OK

# Weekly SLA Customer Report

Customer KBR\_Production  
Database ID 117



BI last ETL error for	BI-DBSRV_DB
vr, 9-09-2022	None
di, 6-09-2022	None
wo, 7-09-2022	None
do, 8-09-2022	None
za, 10-09-2022	None
zo, 4-09-2022	None
ma, 5-09-2022	None
za, 10-09-2022	None
wo, 7-09-2022	None
vr, 9-09-2022	None
di, 6-09-2022	None
do, 8-09-2022	None
zo, 4-09-2022	None
ma, 5-09-2022	None

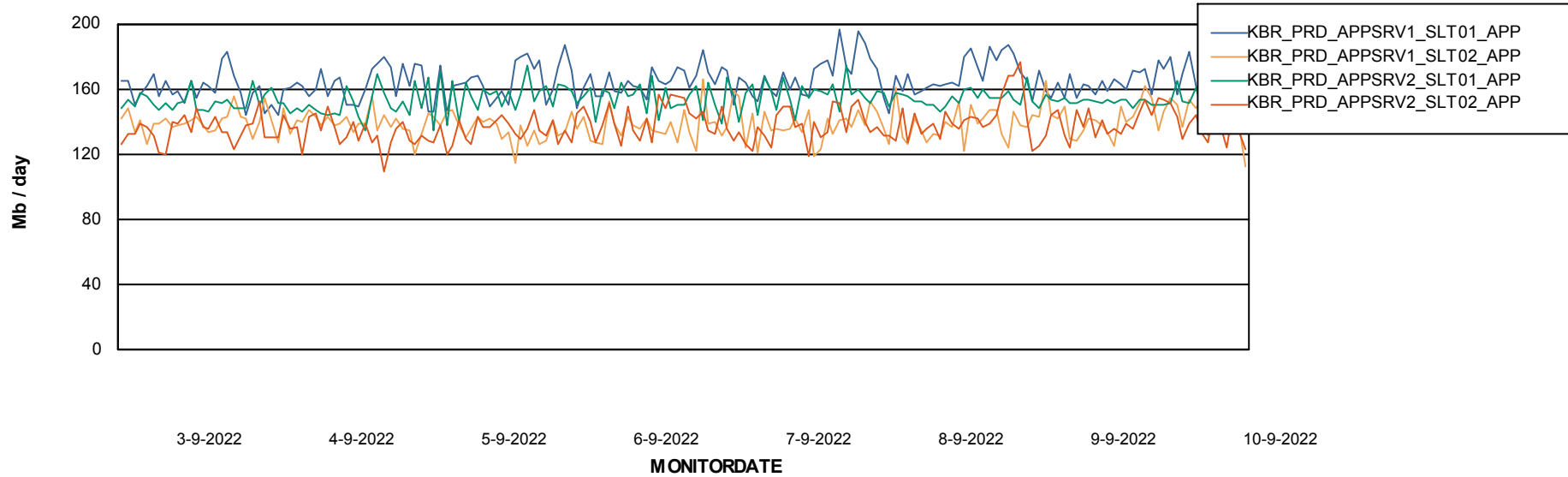
# Weekly SLA Customer Report

Customer KBR\_Production  
Database ID 117



## ABSSolute Application Server Services

### Avg memory used per ABS Server Service



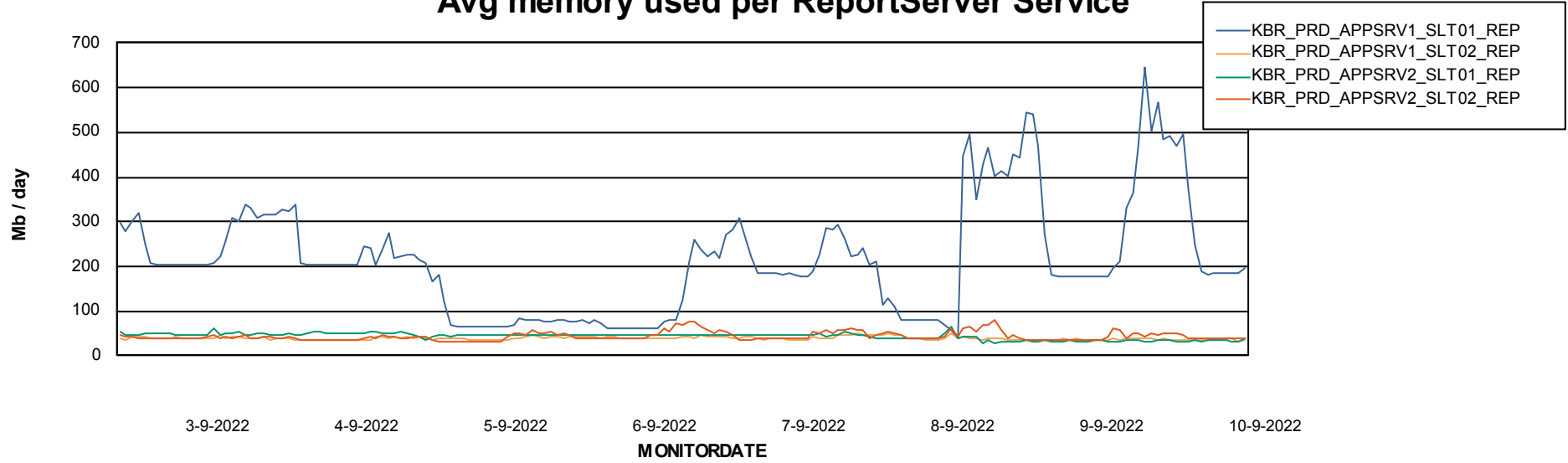
# Weekly SLA Customer Report

Customer KBR\_Production  
Database ID 117

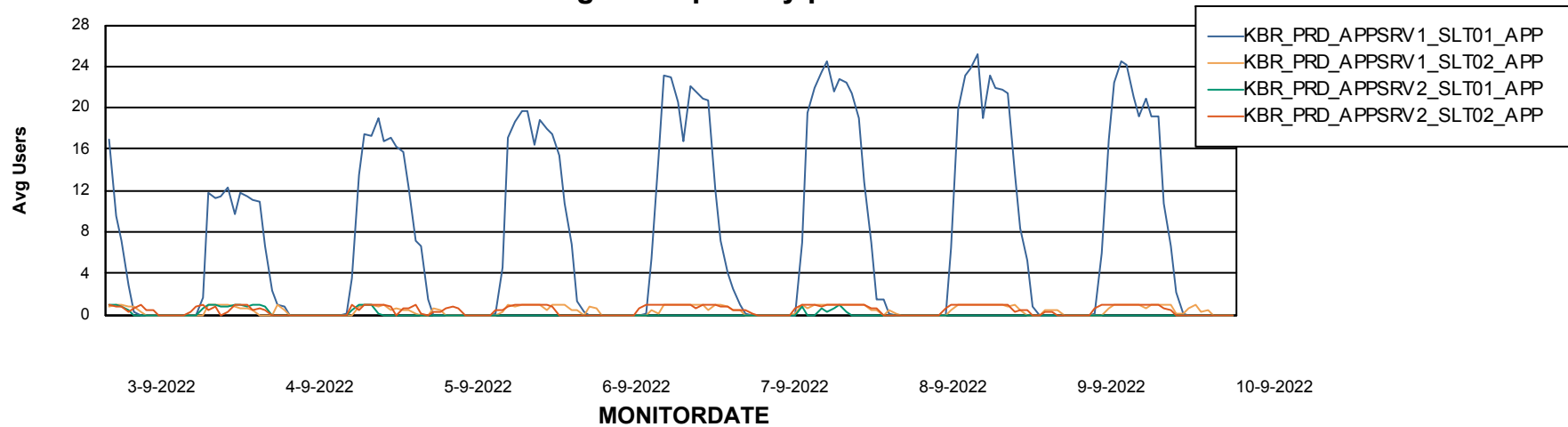


## ABSSolute Application Server Services

### Avg memory used per ReportServer Service



### Avg users per day per ABS server



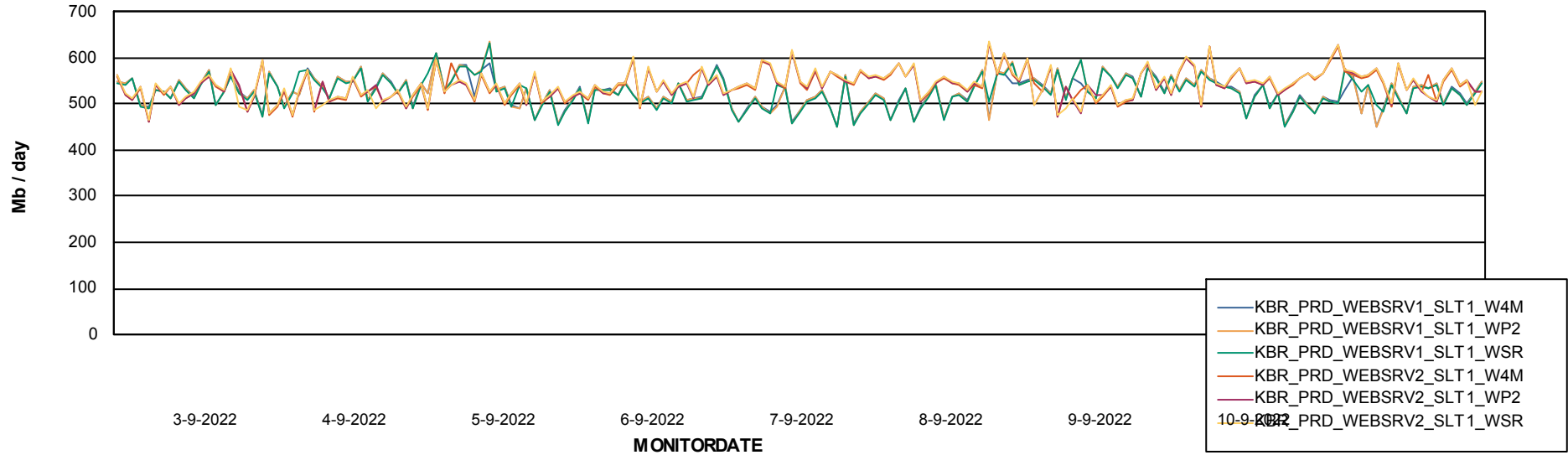
# Weekly SLA Customer Report

Customer KBR\_Production  
Database ID 117



## ABSSolute Web Component Services

### Avg memory used per ABS Web component



# Weekly SLA Customer Report

Customer KBR\_Production  
Database ID 117



## Disaster per ABS component

