

# Weekly SLA Customer Report

Customer KBR\_Production  
 Database ID 117



Harddisk Usage BI-DBSRV

	Free disk space on C: (%)	Total disk space on C: (Gb)	Used disk space on C: (Gb)	Free disk space on D: (%)	Total disk space on D: (Gb)	Used disk space on D: (Gb)	Free disk space on E: (%)	Total disk space on E: (Gb)	Used disk space on E: (Gb)
13-8-2022	29	100	71	91	500	45	56	310	136
12-8-2022	29	100	71	91	500	45	56	310	136
11-8-2022	29	100	70	91	500	45	56	310	137
10-8-2022	29	100	71	91	500	45	55	310	138
9-8-2022	26	100	73	91	500	45	55	310	139
8-8-2022	26	100	73	91	500	45	56	310	136
7-8-2022	26	100	73	91	500	45	55	310	138

Harddisk Usage KBR\_PRD\_APPSRV1

	Free disk space on C: (%)	Total disk space on C: (Gb)	Used disk space on C: (Gb)
13-8-2022	40	149	90
12-8-2022	40	149	89
11-8-2022	41	149	89
10-8-2022	41	149	89
9-8-2022	41	149	88
8-8-2022	41	149	88
7-8-2022	41	149	87

# Weekly SLA Customer Report

Customer KBR\_Production  
Database ID 117



## Harddisk Usage KBR\_PRD\_APPSRV2

	Free disk space on C: (%)	Total disk space on C: (Gb)	Used disk space on C: (Gb)
13-8-2022	28	99	71
12-8-2022	28	99	72
11-8-2022	26	99	73
10-8-2022	27	99	73
9-8-2022	27	99	72
8-8-2022	27	99	72
7-8-2022	27	99	72

## Harddisk Usage KBR\_PRD\_DB-SRV1

	Free disk space on C: (%)	Total disk space on C: (Gb)	Used disk space on C: (Gb)	Free disk space on D: (%)	Total disk space on D: (Gb)	Used disk space on D: (Gb)	Free disk space on E: (%)	Total disk space on E: (Gb)	Used disk space on E: (Gb)
13-8-2022	36	99	64	95	800	38	88	400	48
12-8-2022	36	99	64	95	800	38	88	400	48
11-8-2022	36	99	64	95	800	38	88	400	48
10-8-2022	38	99	62	95	800	38	88	400	48
9-8-2022	38	99	61	95	800	38	88	400	48
8-8-2022	38	99	61	95	800	38	88	400	49
7-8-2022	38	99	61	95	800	38	88	400	48

# Weekly SLA Customer Report

Customer KBR\_Production  
Database ID 117



## Harddisk Usage KBR\_PRD\_WEBSRV1

	Free disk space on / (%)	Total disk space on / (Gb)	Used disk space on / (Gb)	Free disk space on /boot (%)	Total disk space on /boot (Gb)	Used disk space on /boot (Gb)
13-8-2022	75	55	14	60	1	0
12-8-2022	75	55	14	60	1	0
11-8-2022	75	55	14	60	1	0
10-8-2022	75	55	14	60	1	0
9-8-2022	75	55	14	60	1	0
8-8-2022	75	55	14	60	1	0
7-8-2022	75	55	14	60	1	0

## Harddisk Usage KBR\_PRD\_WEBSRV2

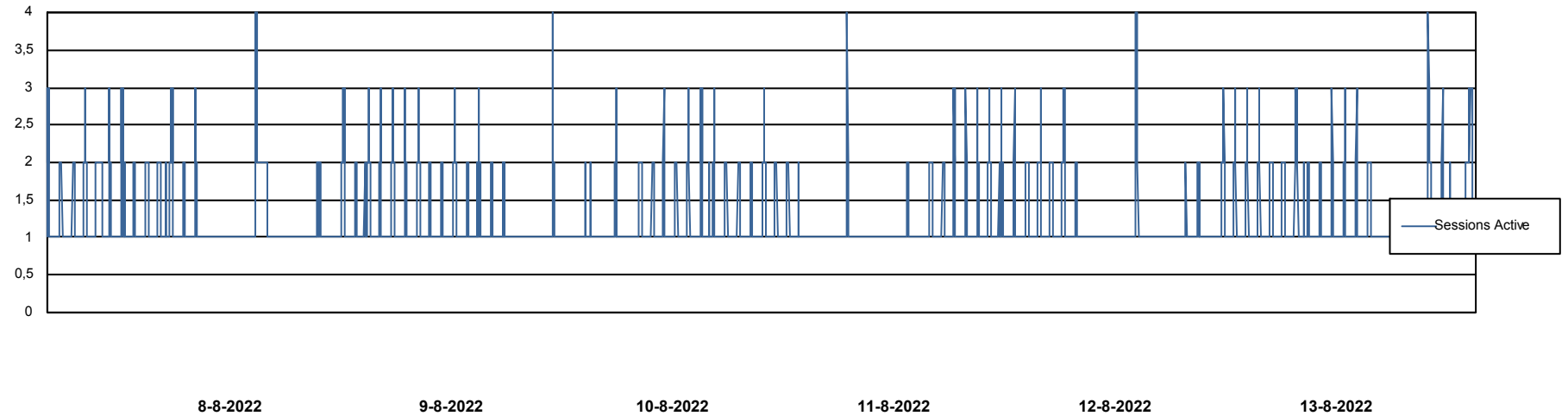
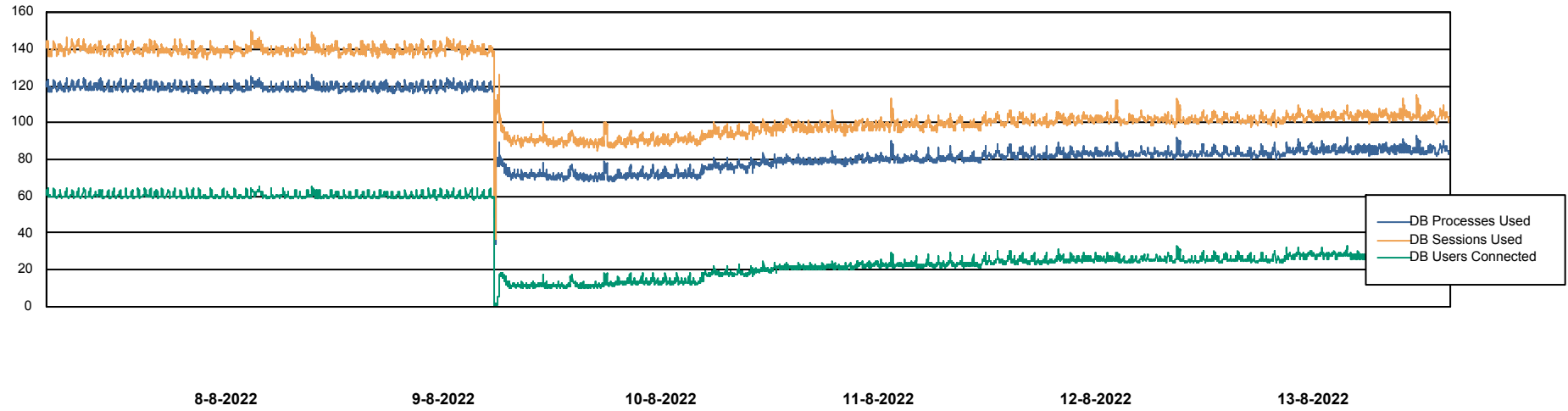
	Free disk space on / (%)	Total disk space on / (Gb)	Used disk space on / (Gb)	Free disk space on /boot (%)	Total disk space on /boot (Gb)	Used disk space on /boot (Gb)
13-8-2022	78	55	12	62	1	0
12-8-2022	78	55	12	62	1	0
11-8-2022	78	55	12	62	1	0
10-8-2022	78	55	12	62	1	0
9-8-2022	78	55	12	62	1	0
8-8-2022	78	55	12	62	1	0
7-8-2022	78	55	12	62	1	0

# Weekly SLA Customer Report

Customer KBR\_Production  
Database ID 117



## Database Performance BI-DBSRV\_DB

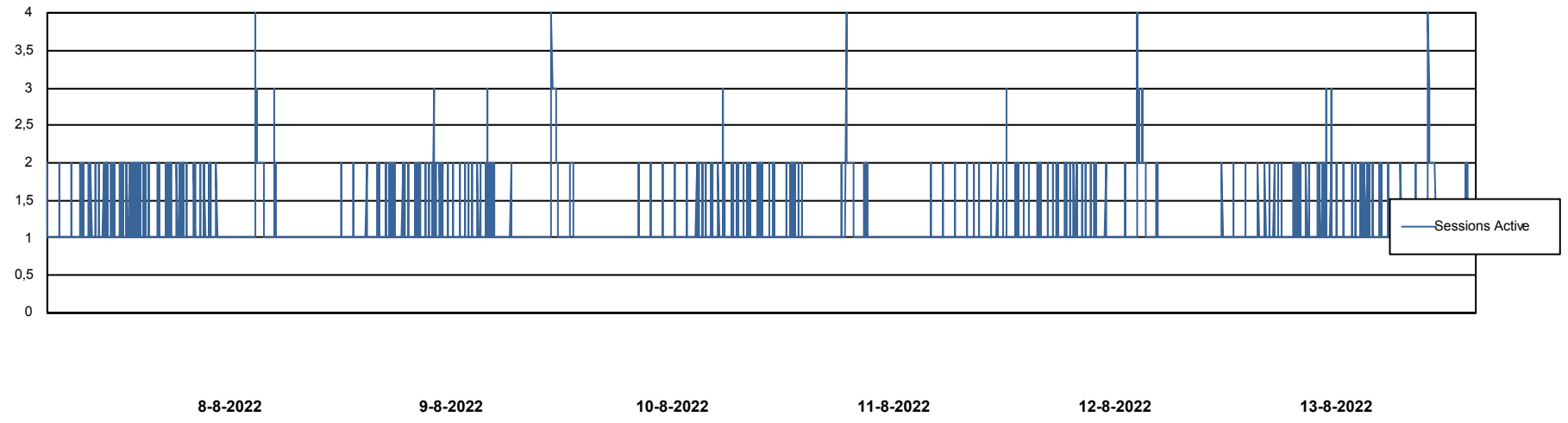
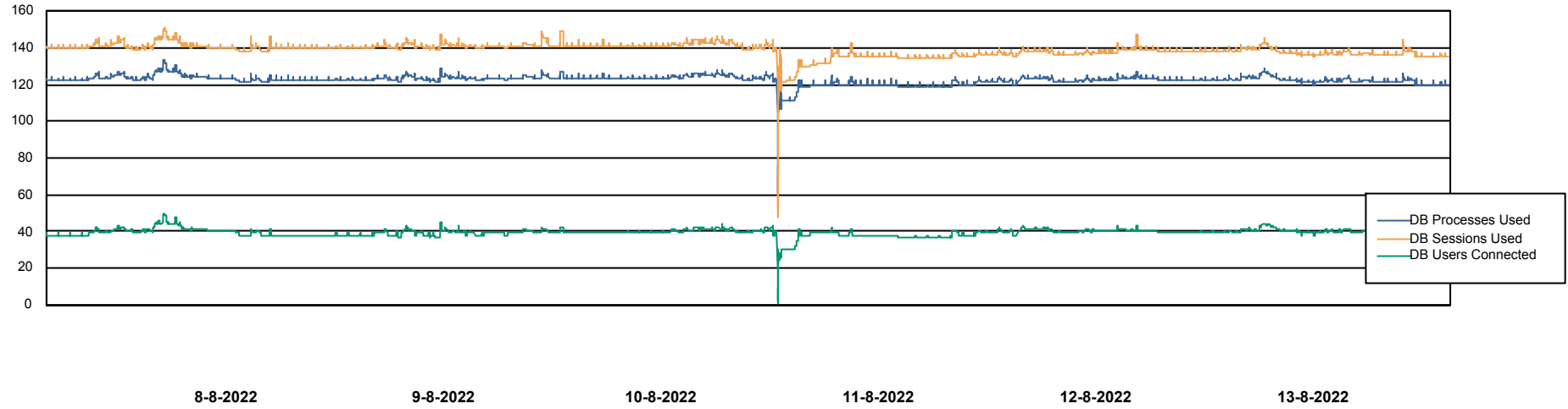


# Weekly SLA Customer Report

Customer KBR\_Production  
Database ID 117



## Database Performance KBR\_PRD\_DB-SRV1\_DB



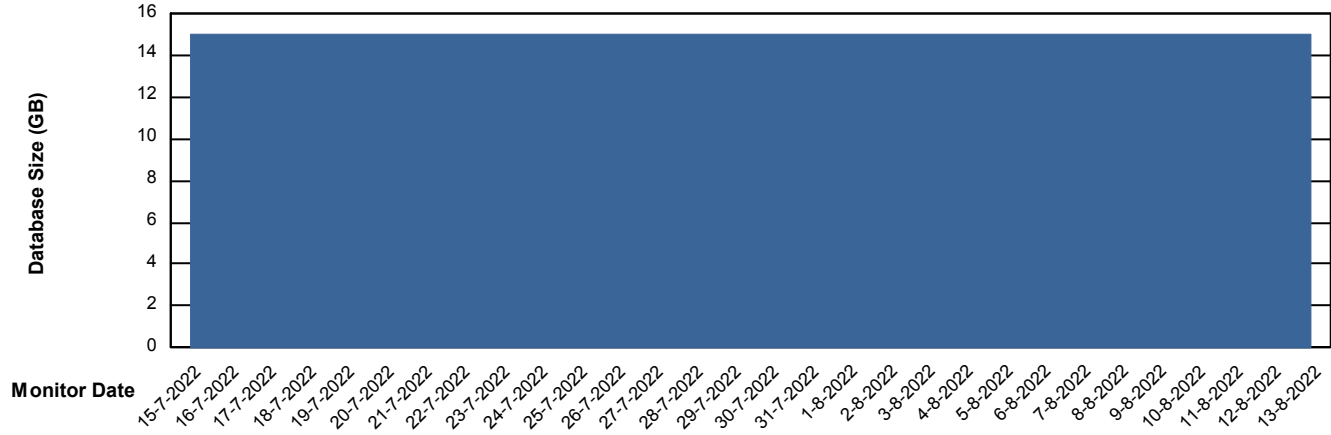
# Weekly SLA Customer Report

Customer KBR\_Production  
Database ID 117



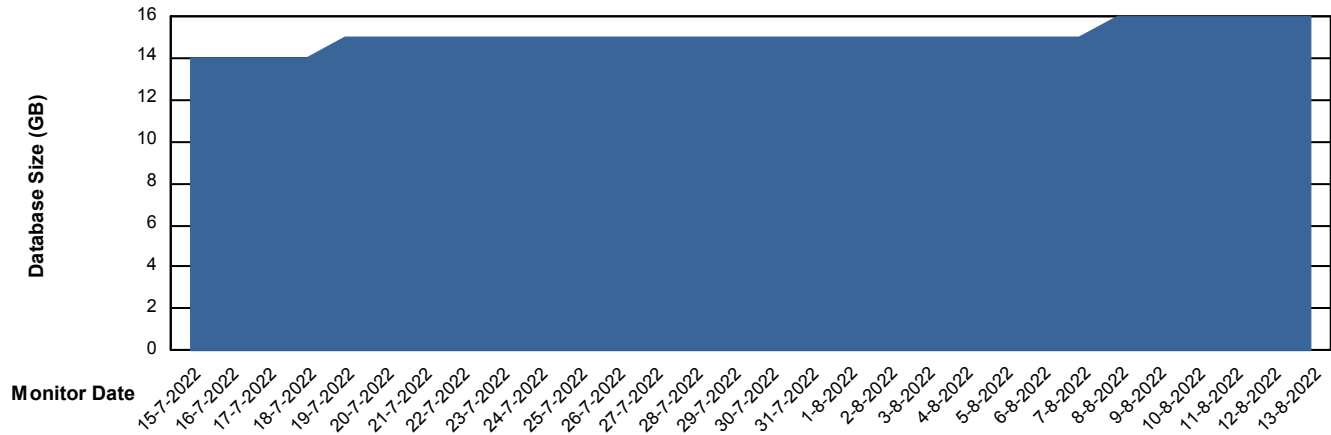
DATABASE SIZE BI-DBSRV\_DB

### Database growth over last month



DATABASE SIZE KBR\_PRD\_DB-SRV1\_DB

### Database growth over last month



# Weekly SLA Customer Report

Customer KBR\_Production  
Database ID 117



Database Tablespace BI-DBSRV\_DB

Date	Tablespace Name	Filesize (Gb)	Usedsize (Gb)	Percentage free
13-8-2022	ABSDATA	8	6	23
	INDX	8	7	17
12-8-2022	ABSDATA	8	6	23
	INDX	8	7	17
11-8-2022	ABSDATA	8	6	23
	INDX	8	7	17
10-8-2022	ABSDATA	8	6	24
	INDX	8	7	17
9-8-2022	ABSDATA	8	6	24
	INDX	8	7	17
8-8-2022	ABSDATA	8	6	24
	INDX	8	7	18
7-8-2022	ABSDATA	8	6	24
	INDX	8	7	18

# Weekly SLA Customer Report

Customer KBR\_Production  
 Database ID 117



Database Tablespace KBR\_PRD\_DB-SRV1\_DB

Date	Tablespace Name	Filesize (Gb)	Usedsize (Gb)	Percentage free
13-8-2022	ABSDATA	12	8	35
	INDX	8	1	82
12-8-2022	ABSDATA	12	8	35
	INDX	8	1	82
11-8-2022	ABSDATA	12	8	35
	INDX	8	1	82
10-8-2022	ABSDATA	12	8	36
	INDX	8	1	82
9-8-2022	ABSDATA	12	8	36
	INDX	8	1	82
8-8-2022	ABSDATA	12	8	37
	INDX	8	1	82
7-8-2022	ABSDATA	12	8	37
	INDX	8	1	83

BI Status and last ETL error for BI-DBSRV\_DB

	ma 8/8/2022	di 9/8/2022	wo 10/8/2022	do 11/8/2022	vr 12/8/2022	za 13/8/2022
<b>ABS DataWarehouse ETL Health</b>	OK	OK	OK	OK	OK	OK
<b>ABS DWHStaging ETL Health</b>	OK	OK	OK	OK	OK	OK

# Weekly SLA Customer Report

Customer KBR\_Production  
Database ID 117



BI last ETL error for	BI-DBSRV_DB
wo, 10-08-2022	None
do, 11-08-2022	None
vr, 12-08-2022	None
zo, 7-08-2022	None
di, 9-08-2022	None
di, 9-08-2022	None
wo, 10-08-2022	None
za, 13-08-2022	None
ma, 8-08-2022	None
do, 11-08-2022	None
ma, 8-08-2022	None
vr, 12-08-2022	None
zo, 7-08-2022	None
za, 13-08-2022	None

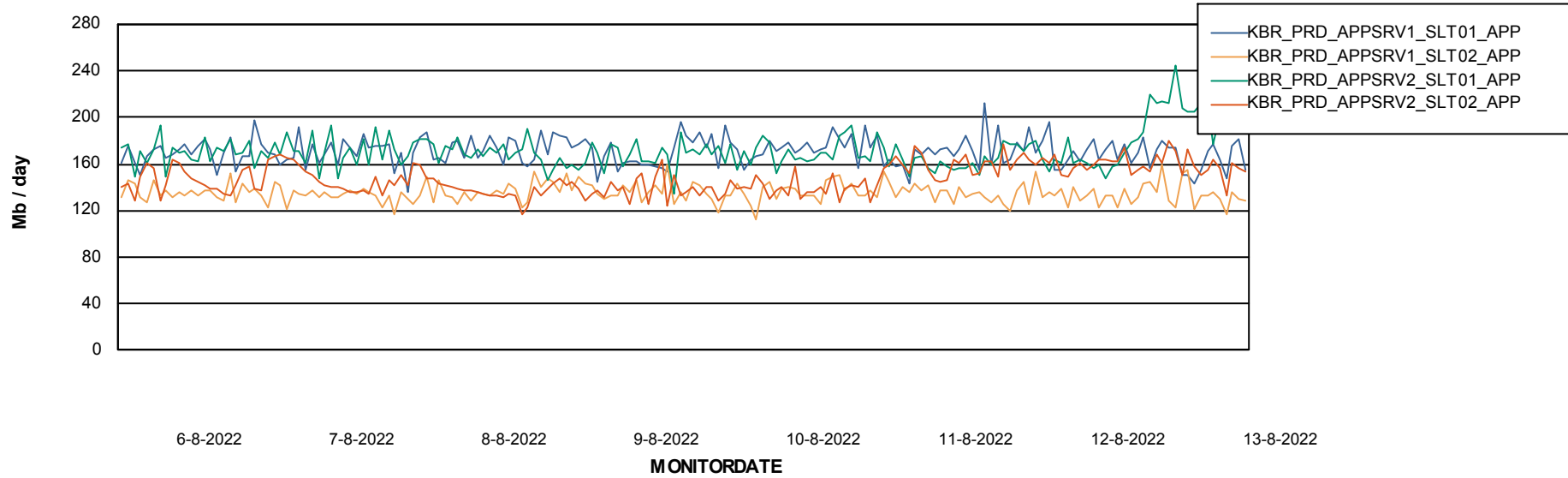
# Weekly SLA Customer Report

Customer KBR\_Production  
Database ID 117



## ABSSolute Application Server Services

### Avg memory used per ABS Server Service



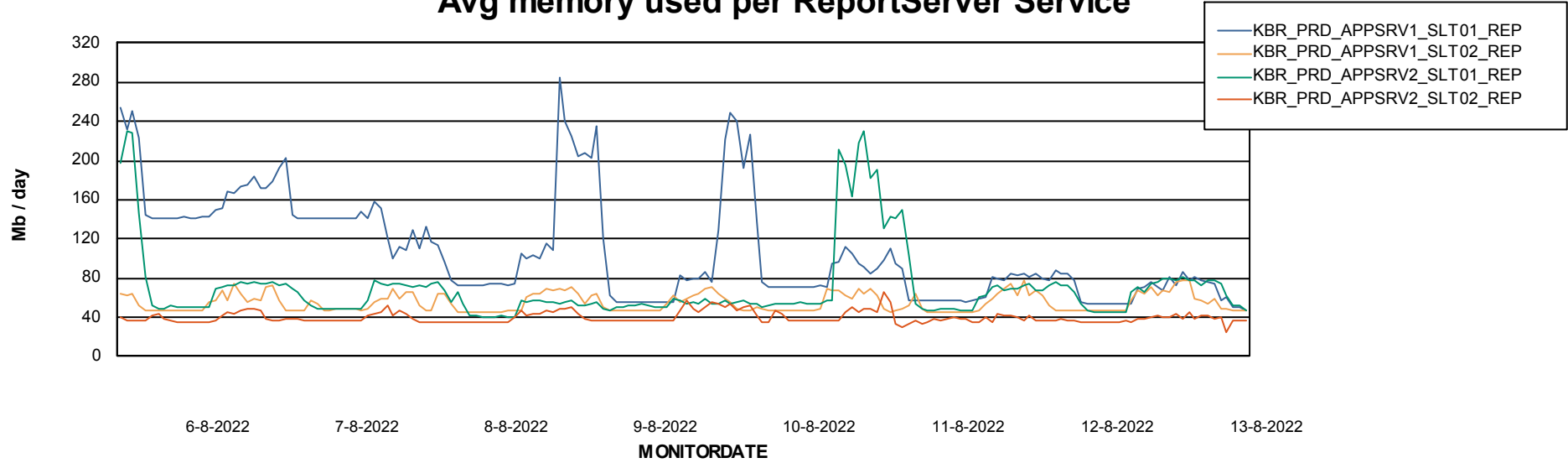
# Weekly SLA Customer Report

Customer KBR\_Production  
Database ID 117

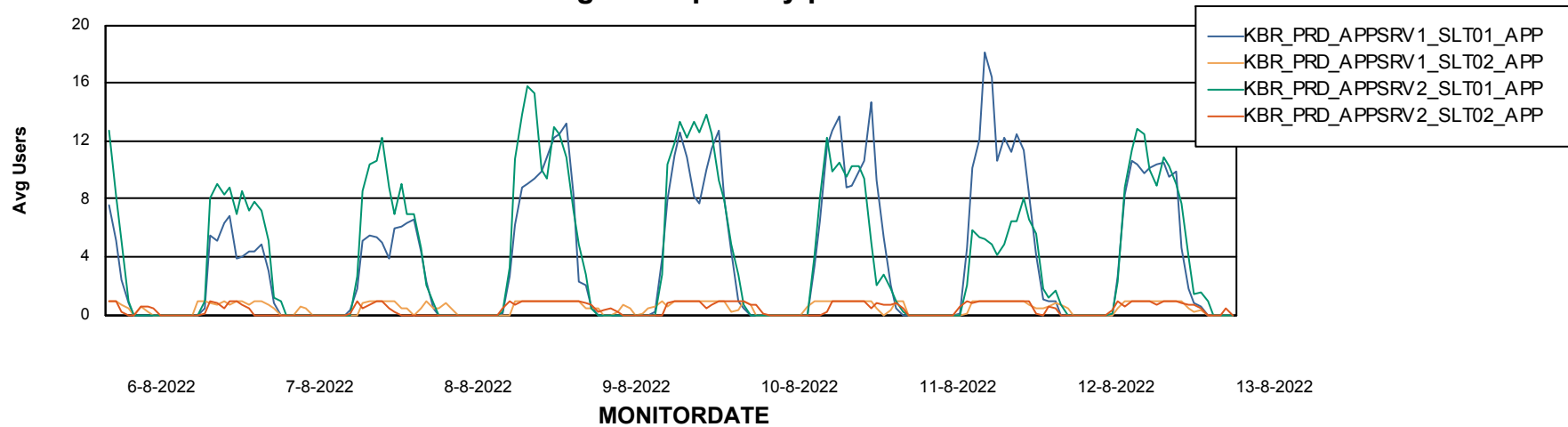


## ABSolute Application Server Services

### Avg memory used per ReportServer Service



### Avg users per day per ABS server



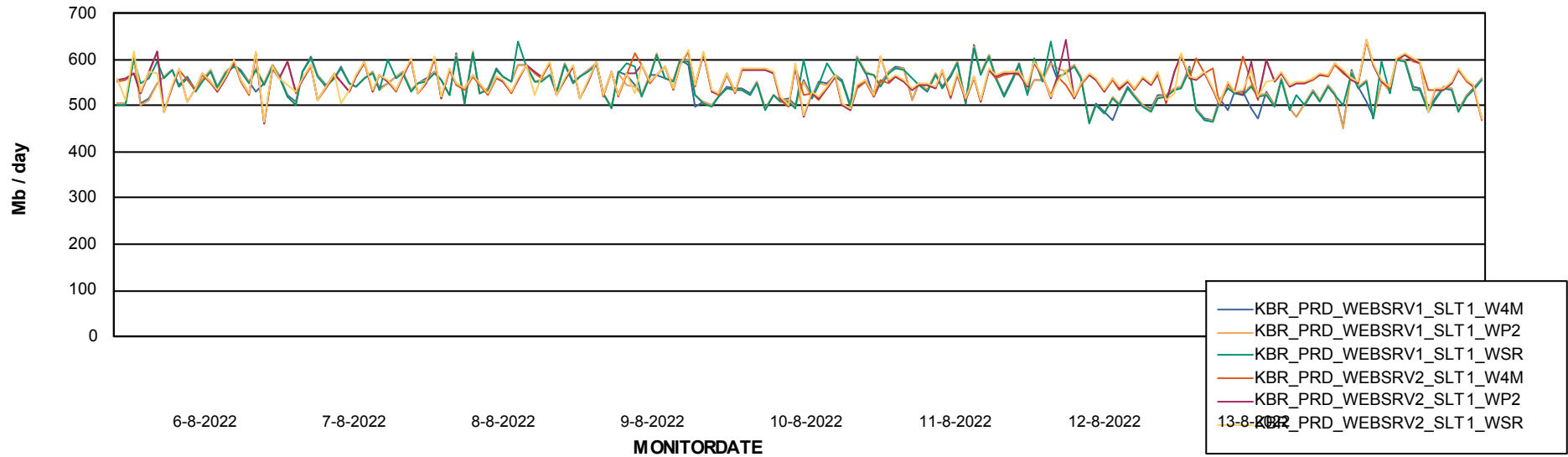
# Weekly SLA Customer Report

Customer KBR\_Production  
Database ID 117



## ABSSolute Web Component Services

### Avg memory used per ABS Web component



# Weekly SLA Customer Report

Customer KBR\_Production  
Database ID 117



## Disaster per ABS component

