

# Weekly SLA Customer Report

Customer AUJ Production  
 Database ID 41



Harddisk Usage AUJ Prod. ABSSolute DB server: PABSDB1

	Free disk space on / (%)	Total disk space on / (Gb)	Used disk space on / (Gb)	Free disk space on /bk (%)	Total disk space on /bk (Gb)	Used disk space on /bk (Gb)	Free disk space on /u02 (%)	Total disk space on /u02 (Gb)	Used disk space on /u02 (Gb)
9-7-2022	87	200	26	30	800	562	19	1,499	1,211
8-7-2022	87	200	26	26	800	589	20	1,499	1,201
7-7-2022	87	200	26	26	800	588	21	1,499	1,191
6-7-2022	87	200	26	27	800	582	21	1,499	1,191
5-7-2022	87	200	26	27	800	581	21	1,499	1,191
4-7-2022	87	200	26	27	800	581	21	1,499	1,191
3-7-2022	87	200	26	27	800	580	21	1,499	1,191

Harddisk Usage AUJ Prod. BI DB server: PABSBI1

	Free disk space on / (%)	Total disk space on / (Gb)	Used disk space on / (Gb)	Free disk space on /u02 (%)	Total disk space on /u02 (Gb)	Used disk space on /u02 (Gb)
9-7-2022	88	200	24	72	1,000	284
8-7-2022	88	200	24	72	1,000	283
7-7-2022	88	200	24	72	1,000	283
6-7-2022	88	200	24	72	1,000	283
5-7-2022	88	200	24	72	1,000	283
4-7-2022	88	200	24	72	1,000	283
3-7-2022	88	200	24	71	1,000	286

# Weekly SLA Customer Report

Customer AUJ Production  
 Database ID 41



Harddisk Usage AUJ\_PRD\_ABS\_APP1

	Free disk space on / (%)	Total disk space on / (Gb)	Used disk space on / (Gb)	Free disk space on /abs (%)	Total disk space on /abs (Gb)	Used disk space on /abs (Gb)
9-7-2022	84	40	7	84	85	13
8-7-2022	84	40	7	81	85	16
7-7-2022	83	40	7	67	85	28
6-7-2022	83	40	7	61	85	33
5-7-2022	83	40	7	62	85	33
4-7-2022	83	40	7	62	85	32
3-7-2022	84	40	7	63	85	32

Harddisk Usage AUJ\_PRD\_ABS\_APP2

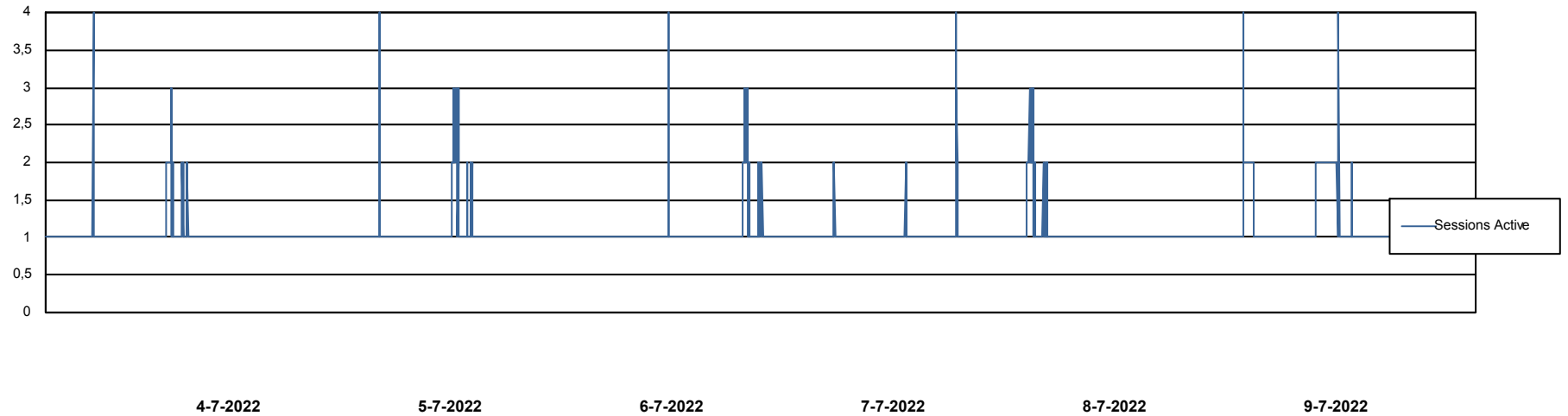
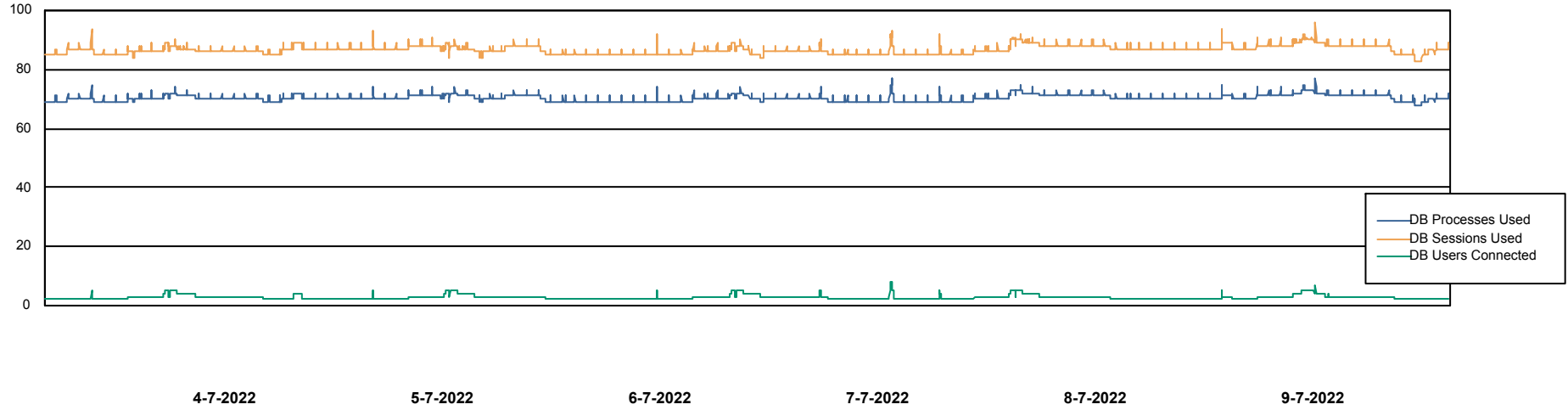
	Free disk space on / (%)	Total disk space on / (Gb)	Used disk space on / (Gb)	Free disk space on /abs (%)	Total disk space on /abs (Gb)	Used disk space on /abs (Gb)
9-7-2022	84	40	6	19	85	69
8-7-2022	84	40	6	18	85	69
7-7-2022	84	40	6	19	85	69
6-7-2022	84	40	6	19	85	69
5-7-2022	84	40	6	13	85	74
4-7-2022	84	40	6	10	85	76
3-7-2022	84	40	6	11	85	76

# Weekly SLA Customer Report

Customer AUJ Production  
Database ID 41



## Database Performance AUJ Prod. BI DB (PABSBI1 server)

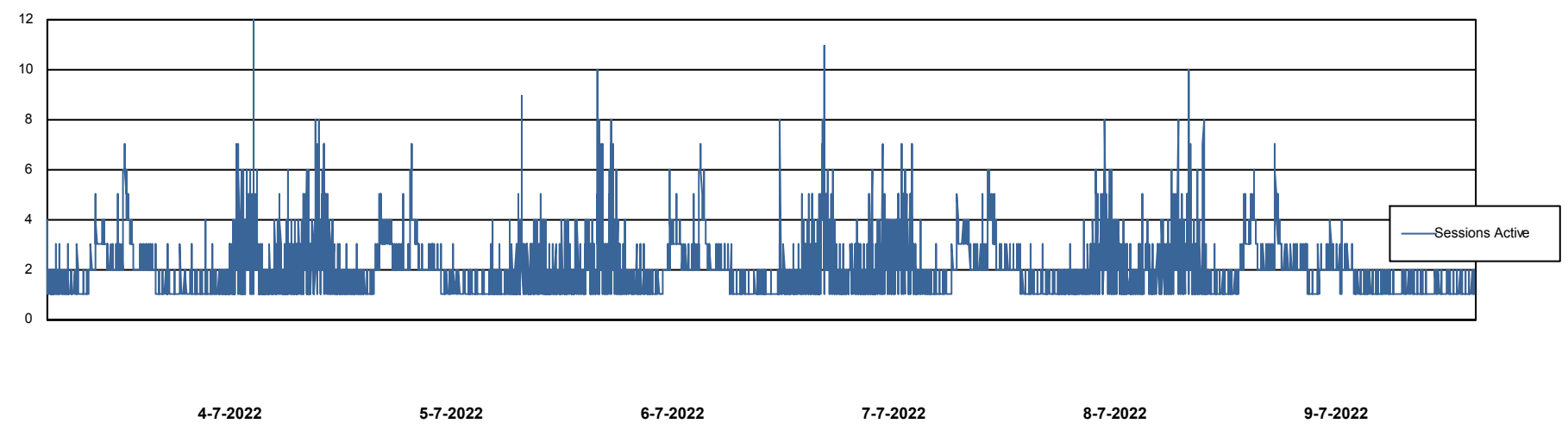
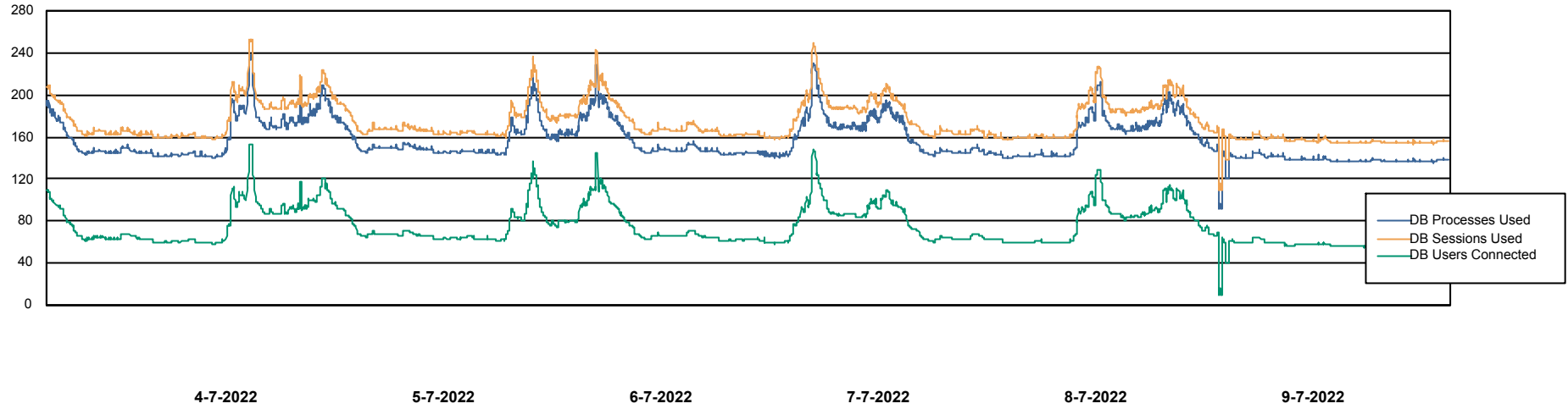


# Weekly SLA Customer Report

Customer AUJ Production  
Database ID 41



## Database Performance AUJ\_DB1\_Primary



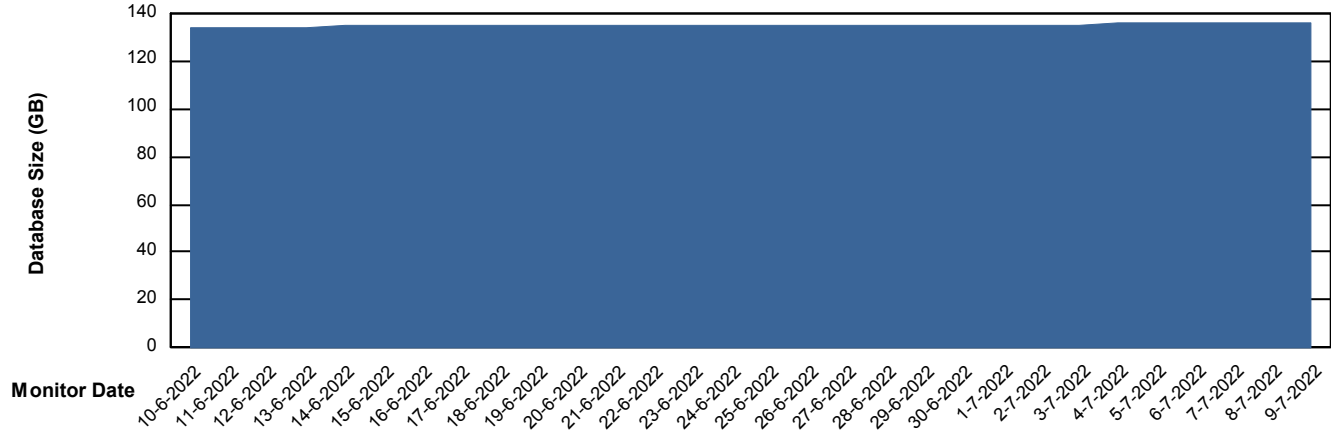
# Weekly SLA Customer Report

Customer AUJ Production  
Database ID 41



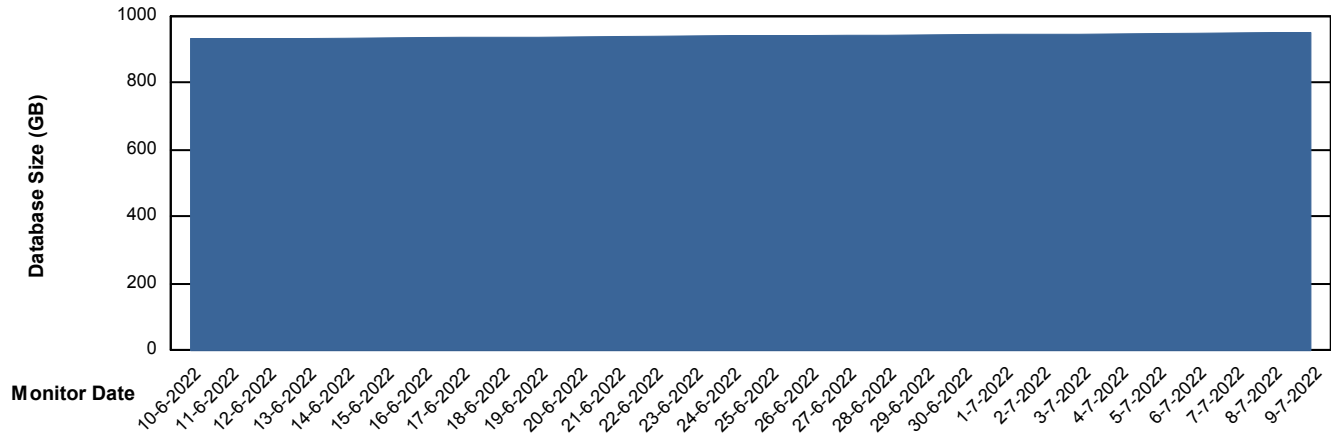
DATABASE SIZE AUJ Prod. BI DB (PABSBI1 server)

### Database growth over last month



DATABASE SIZE AUJ\_DB1\_Primary

### Database growth over last month



# Weekly SLA Customer Report

Customer AUJ Production  
 Database ID 41



Database Tablespace AUJ Prod. BI DB (PABSBI1 server)

Date	Tablespace Name	Filesize (Gb)	Usedsize (Gb)	Percentage free
9-7-2022	ABSDATA	134	112	17
	INDX	29	21	26
8-7-2022	ABSDATA	134	112	17
	INDX	29	21	26
7-7-2022	ABSDATA	134	112	17
	INDX	29	21	26
6-7-2022	ABSDATA	134	112	17
	INDX	29	21	26
5-7-2022	ABSDATA	134	112	17
	INDX	29	21	26
4-7-2022	ABSDATA	134	112	17
	INDX	29	21	26
3-7-2022	ABSDATA	134	112	17
	INDX	29	21	26

# Weekly SLA Customer Report

Customer AUJ Production  
 Database ID 41



Database Tablespace AUJ\_DB1\_Primary

Date	Tablespace Name	Filesize (Gb)	Usedsize (Gb)	Percentage free
9-7-2022	ABSDATA	533	431	19
	INDX	612	512	16
8-7-2022	ABSDATA	533	431	19
	INDX	612	512	16
7-7-2022	ABSDATA	513	431	16
	INDX	612	512	16
6-7-2022	ABSDATA	513	430	16
	INDX	612	511	16
5-7-2022	ABSDATA	513	430	16
	INDX	612	511	17
4-7-2022	ABSDATA	513	429	16
	INDX	612	510	17
3-7-2022	ABSDATA	513	429	16
	INDX	612	510	17

BI Status and last ETL error for AUJ Prod. BI DB (PABSBI1 server)

	ma 4/7/2022	di 5/7/2022	wo 6/7/2022	do 7/7/2022	vr 8/7/2022	za 9/7/2022
<b>ABS DataWarehouse ETL Health</b>	OK	OK	OK	OK	Not OK	Not OK
<b>ABS DWHStaging ETL Health</b>	OK	OK	OK	OK	Not OK	Not OK

# Weekly SLA Customer Report

Customer AUJ Production  
Database ID 41



BI last ETL error for	AUJ Prod. BI DB (PABSBI1 server)
do, 7-07-2022	None
zo, 3-07-2022	None
di, 5-07-2022	None
zo, 3-07-2022	None
wo, 6-07-2022	None
za, 9-07-2022	ORA-00001: unique constraint (ABSDWHSTAGING.PK_CUST_PRODUCTS_MAIN) violated
ma, 4-07-2022	None
za, 9-07-2022	None
vr, 8-07-2022	ORA-00001: unique constraint (ABSDWHSTAGING.PK_CUST_PRODUCTS_MAIN) violated
vr, 8-07-2022	None
do, 7-07-2022	None
ma, 4-07-2022	None
di, 5-07-2022	None
wo, 6-07-2022	None
vr, 8-07-2022	None

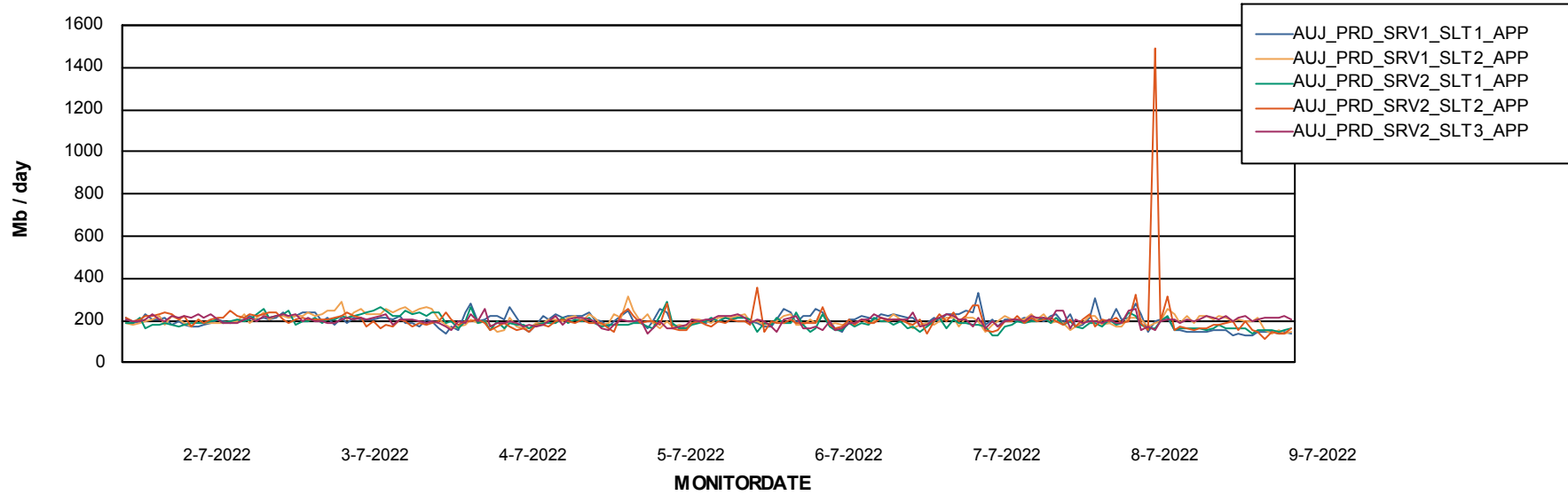
# Weekly SLA Customer Report

Customer AUJ Production  
Database ID 41

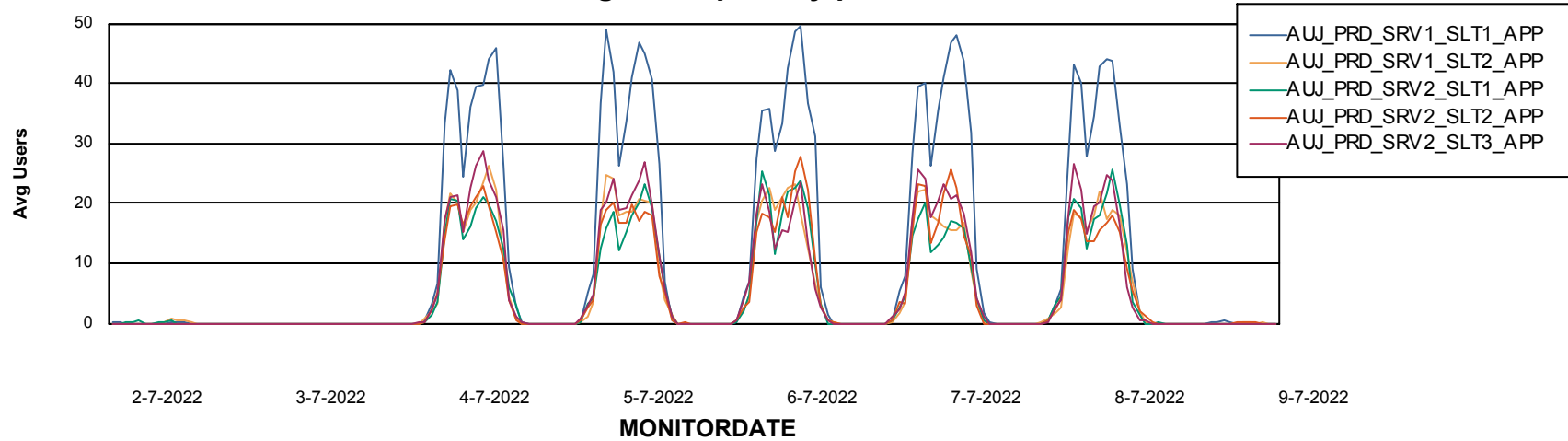


## ABSSolute Application Server Services

### Avg memory used per ABS Server Service



### Avg users per day per ABS server



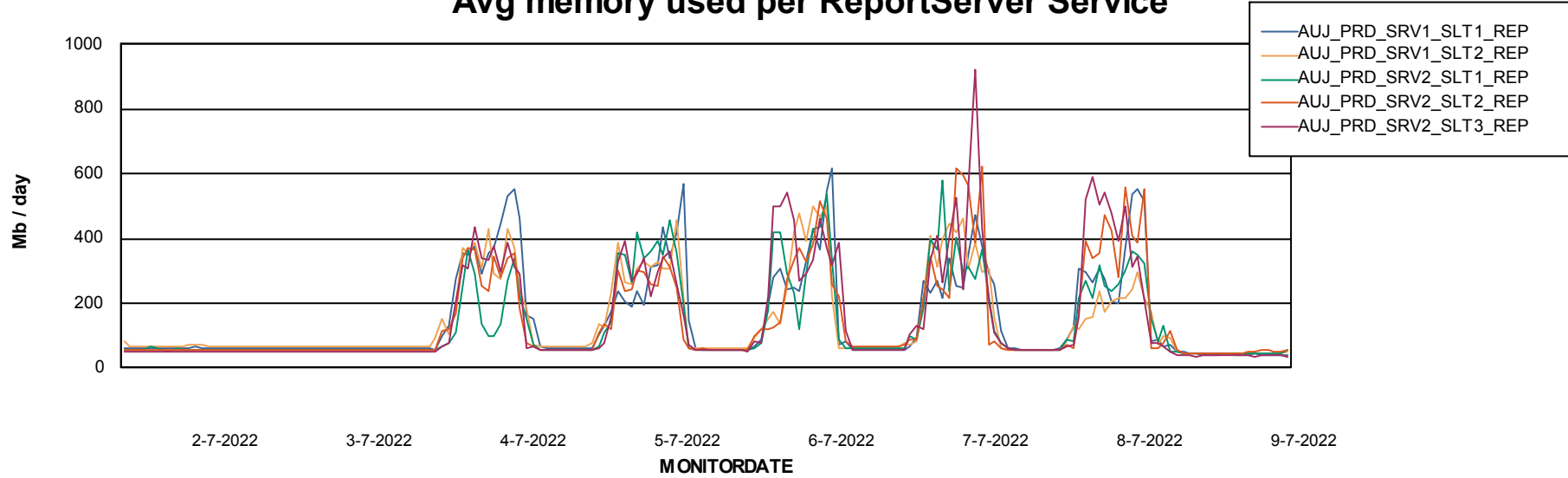
# Weekly SLA Customer Report

Customer AUJ Production  
Database ID 41



## ABSSolute Application ReportServer Services

### Avg memory used per ReportServer Service



### Disaster per ABS component

