

Weekly SLA Customer Report

Customer AUJ Production
Database ID 41



Harddisk Usage AUJ Prod. ABSSolute DB server: PABSDB1

	Free disk space on / (%)	Total disk space on / (Gb)	Used disk space on / (Gb)	Free disk space on /bk (%)	Total disk space on /bk (Gb)	Used disk space on /bk (Gb)	Free disk space on /u02 (%)	Total disk space on /u02 (Gb)	Used disk space on /u02 (Gb)
25-6-2022	87	200	26	30	800	556	21	1,499	1,191
24-6-2022	87	200	26	27	800	583	21	1,499	1,185
23-6-2022	87	200	26	27	800	583	21	1,499	1,181
22-6-2022	87	200	26	28	800	579	21	1,499	1,181
21-6-2022	87	200	26	28	800	577	21	1,499	1,181
20-6-2022	87	200	26	28	800	575	21	1,499	1,181
19-6-2022	87	200	26	28	800	573	21	1,499	1,181

Harddisk Usage AUJ Prod. BI DB server: PABSBI1

	Free disk space on / (%)	Total disk space on / (Gb)	Used disk space on / (Gb)	Free disk space on /u02 (%)	Total disk space on /u02 (Gb)	Used disk space on /u02 (Gb)
25-6-2022	88	200	24	71	1,000	286
24-6-2022	88	200	24	72	1,000	280
23-6-2022	88	200	24	72	1,000	278
22-6-2022	88	200	24	72	1,000	278
21-6-2022	88	200	24	72	1,000	278
20-6-2022	88	200	24	72	1,000	277
19-6-2022	88	200	24	72	1,000	280

Weekly SLA Customer Report

Customer AUJ Production
Database ID 41



Harddisk Usage AUJ_PRD_ABS_APP1

	Free disk space on / (%)	Total disk space on / (Gb)	Used disk space on / (Gb)	Free disk space on /abs (%)	Total disk space on /abs (Gb)	Used disk space on /abs (Gb)
25-6-2022	84	40	7	67	85	28
24-6-2022	84	40	7	67	85	28
23-6-2022	84	40	7	68	85	27
22-6-2022	84	40	7	69	85	27
21-6-2022	84	40	7	69	85	26
20-6-2022	84	40	7	70	85	26
19-6-2022	84	40	7	70	85	26

Harddisk Usage AUJ_PRD_ABS_APP2

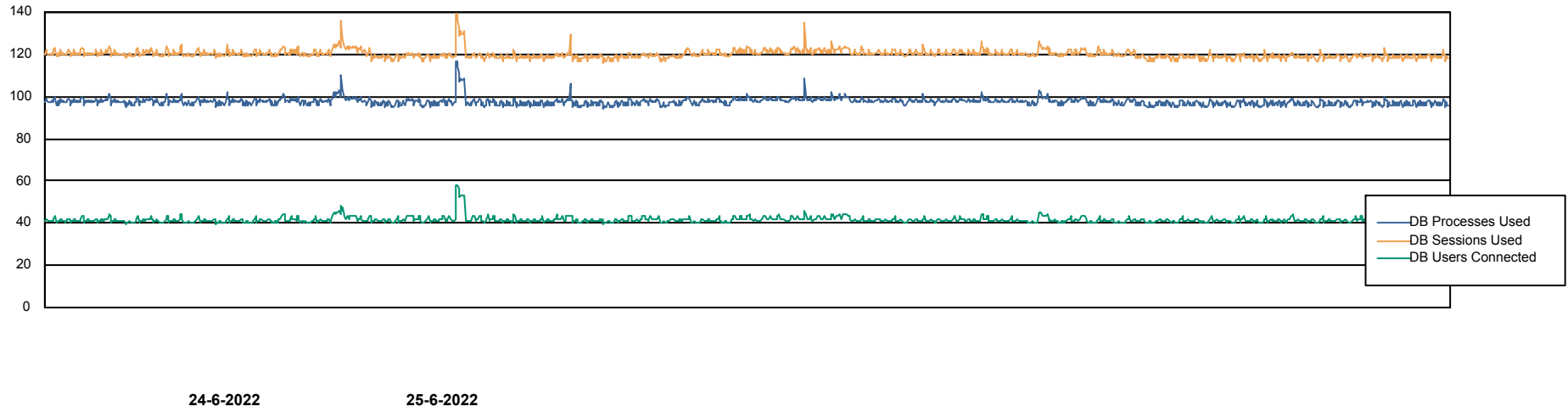
	Free disk space on / (%)	Total disk space on / (Gb)	Used disk space on / (Gb)	Free disk space on /abs (%)	Total disk space on /abs (Gb)	Used disk space on /abs (Gb)
25-6-2022	84	40	6	14	85	73
24-6-2022	84	40	6	14	85	73
23-6-2022	84	40	6	14	85	73
22-6-2022	84	40	6	15	85	72
21-6-2022	84	40	6	16	85	72
20-6-2022	84	40	6	16	85	71
19-6-2022	84	40	6	17	85	71

Weekly SLA Customer Report

Customer AUJ Production
Database ID 41



Database Performance AUJ EMCC

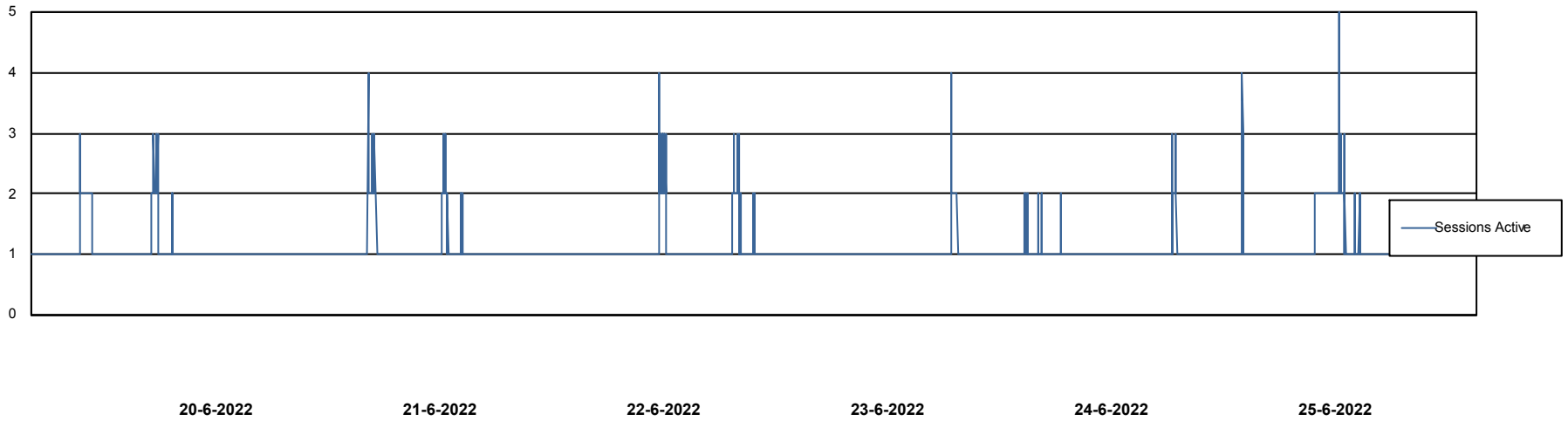
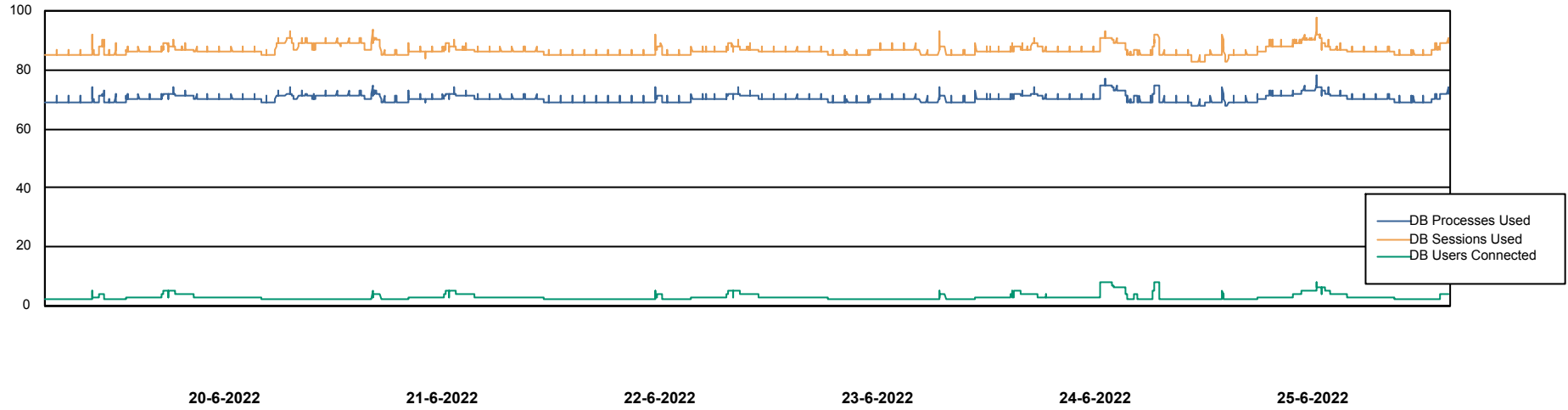


Weekly SLA Customer Report

Customer AUJ Production
Database ID 41



Database Performance AUJ Prod. BI DB (PABSBI1 server)

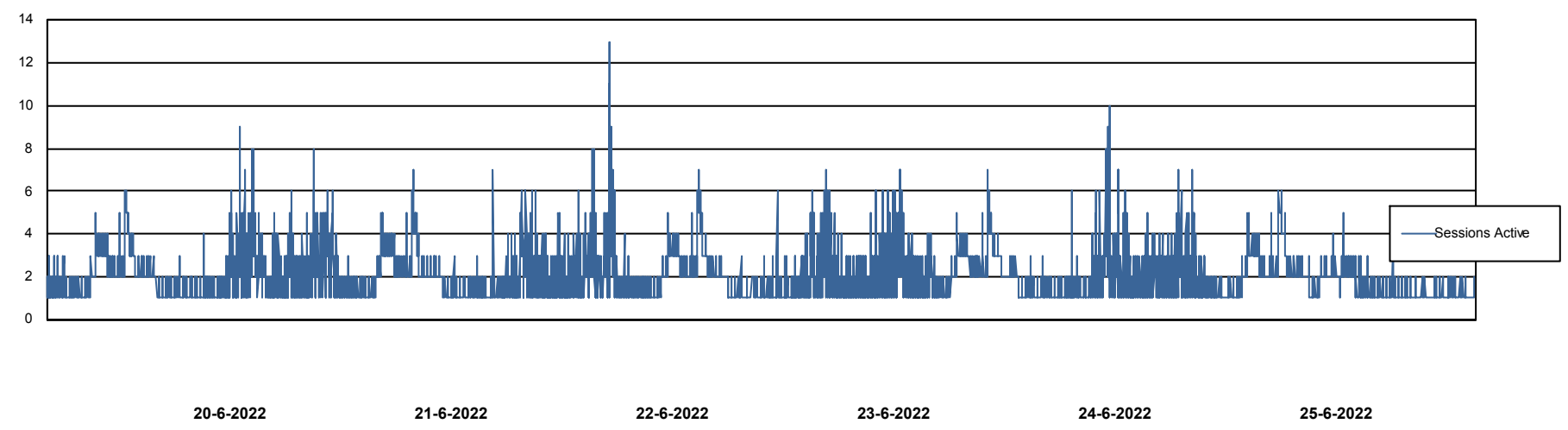
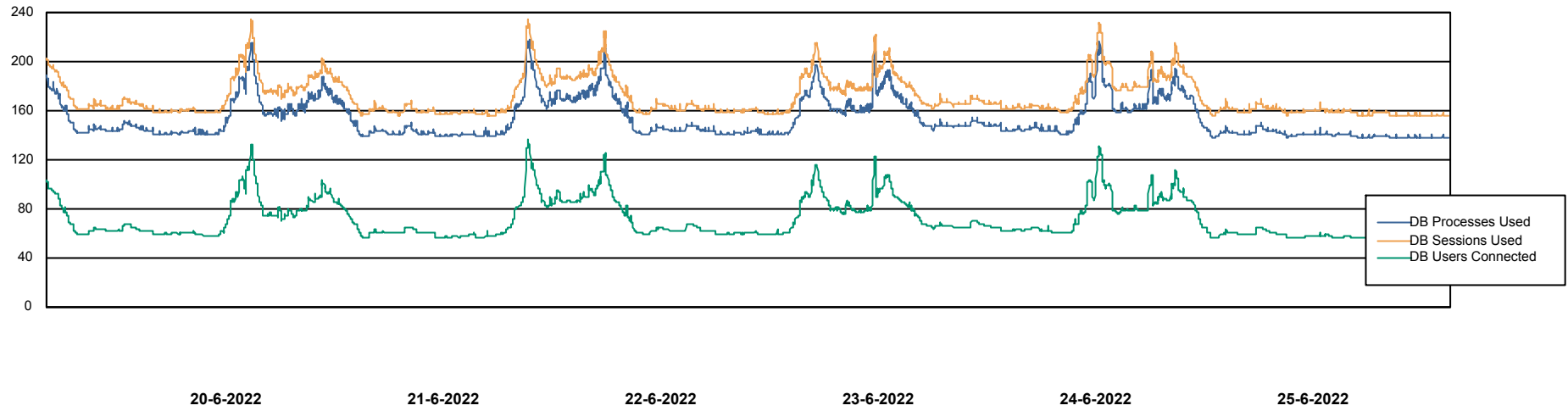


Weekly SLA Customer Report

Customer AUJ Production
Database ID 41



Database Performance AUJ_DB1_Primary



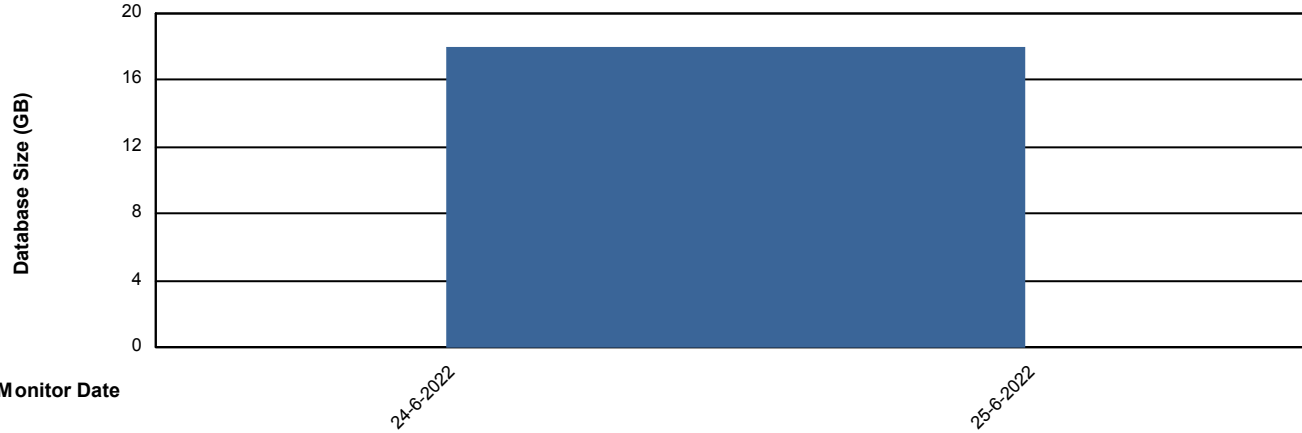
Weekly SLA Customer Report

Customer AUJ Production
Database ID 41



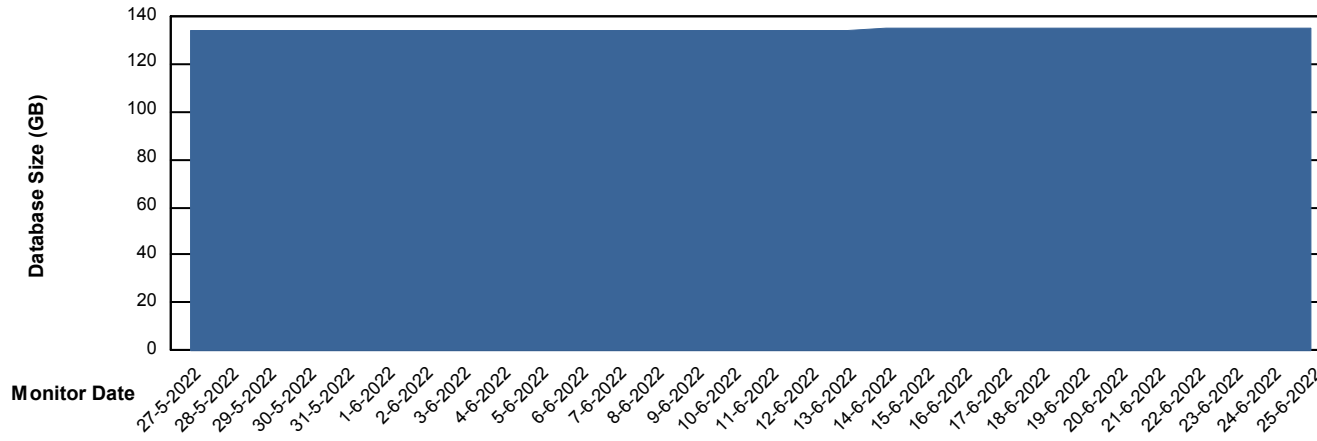
DATABASE SIZE AUJ EMCC

Database growth over last month



DATABASE SIZE AUJ Prod. BI DB (PABSBI1 server)

Database growth over last month



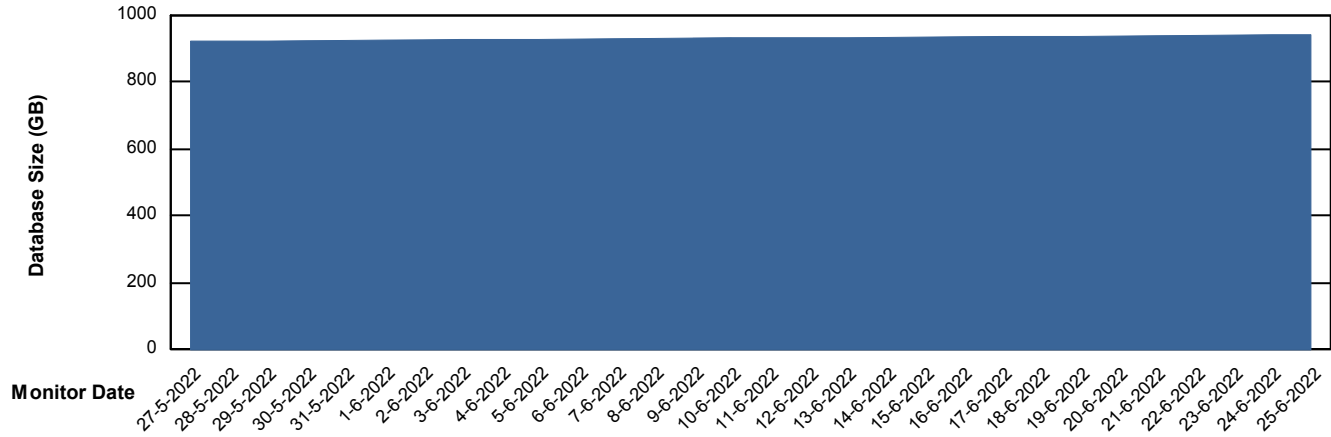
Weekly SLA Customer Report

Customer AUJ Production
Database ID 41



DATABASE SIZE AUJ_DB1_Primary

Database growth over last month



Weekly SLA Customer Report

Customer AUJ Production
Database ID 41



Database Tablespace		AUJ Prod. BI DB (PABSBI1 server)		
Date	Tablespace Name	Filesize (Gb)	Usedsize (Gb)	Percentage free
25-6-2022	ABSDATA	134	111	17
	INDX	29	21	26
24-6-2022	ABSDATA	134	111	17
	INDX	29	21	27
23-6-2022	ABSDATA	134	111	17
	INDX	29	21	27
22-6-2022	ABSDATA	134	111	17
	INDX	29	21	27
21-6-2022	ABSDATA	134	111	17
	INDX	29	21	27
20-6-2022	ABSDATA	134	111	17
	INDX	29	21	27
19-6-2022	ABSDATA	134	111	17
	INDX	29	21	27

Weekly SLA Customer Report

Customer AUJ Production
 Database ID 41



Database Tablespace AUJ_DB1_Primary

Date	Tablespace Name	Filesize (Gb)	Usedsize (Gb)	Percentage free
25-6-2022	ABSDATA	513	427	17
	INDX	612	508	17
24-6-2022	ABSDATA	513	427	17
	INDX	612	508	17
23-6-2022	ABSDATA	507	426	16
	INDX	608	507	17
22-6-2022	ABSDATA	507	426	16
	INDX	608	507	17
21-6-2022	ABSDATA	507	425	16
	INDX	608	506	17
20-6-2022	ABSDATA	507	425	16
	INDX	608	506	17
19-6-2022	ABSDATA	507	424	16
	INDX	608	505	17

BI Status and last ETL error for AUJ Prod. BI DB (PABSBI1 server)

	ma 20/6/2022	di 21/6/2022	wo 22/6/2022	do 23/6/2022	vr 24/6/2022	za 25/6/2022
ABS DataWarehouse ETL Health	OK	OK	OK	Not OK	Not OK	OK
ABS DWHStaging ETL Health	OK	OK	OK	OK	OK	OK

Weekly SLA Customer Report

Customer AUJ Production
Database ID 41



BI last ETL error for	AUJ Prod. BI DB (PABSBI1 server)
zo, 19-06-2022	None
do, 23-06-2022	None
vr, 24-06-2022	None
do, 23-06-2022	None
ma, 20-06-2022	None
wo, 22-06-2022	None
vr, 24-06-2022	while updating Customer Retention Info ORA-01427: single-row subquery returns more than one row
di, 21-06-2022	None
zo, 19-06-2022	None
ma, 20-06-2022	None
wo, 22-06-2022	None
di, 21-06-2022	None
do, 23-06-2022	while updating Customer Retention Info ORA-01427: single-row subquery returns more than one row
vr, 24-06-2022	None
za, 25-06-2022	None
za, 25-06-2022	None

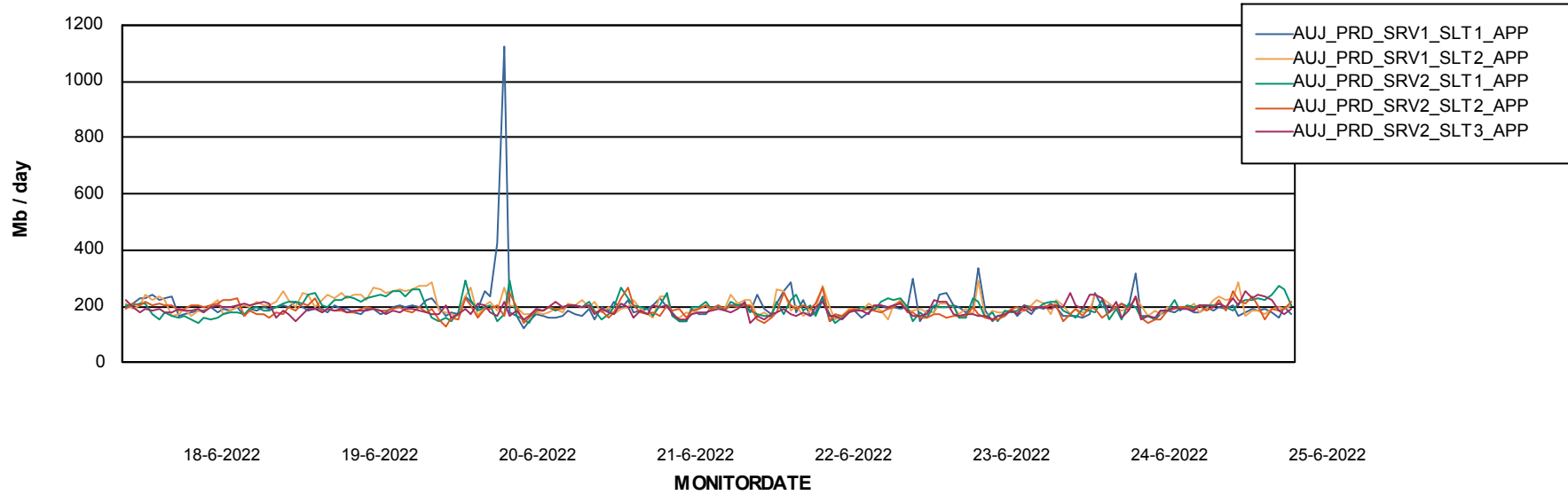
Weekly SLA Customer Report

Customer AUJ Production
Database ID 41

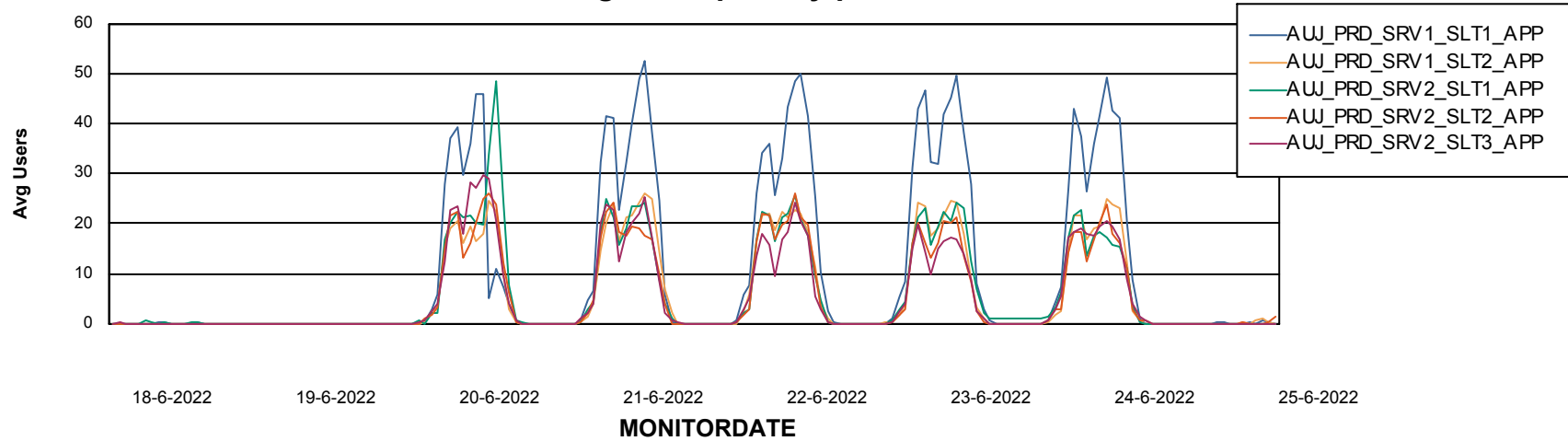


ABSSolute Application Server Services

Avg memory used per ABS Server Service



Avg users per day per ABS server



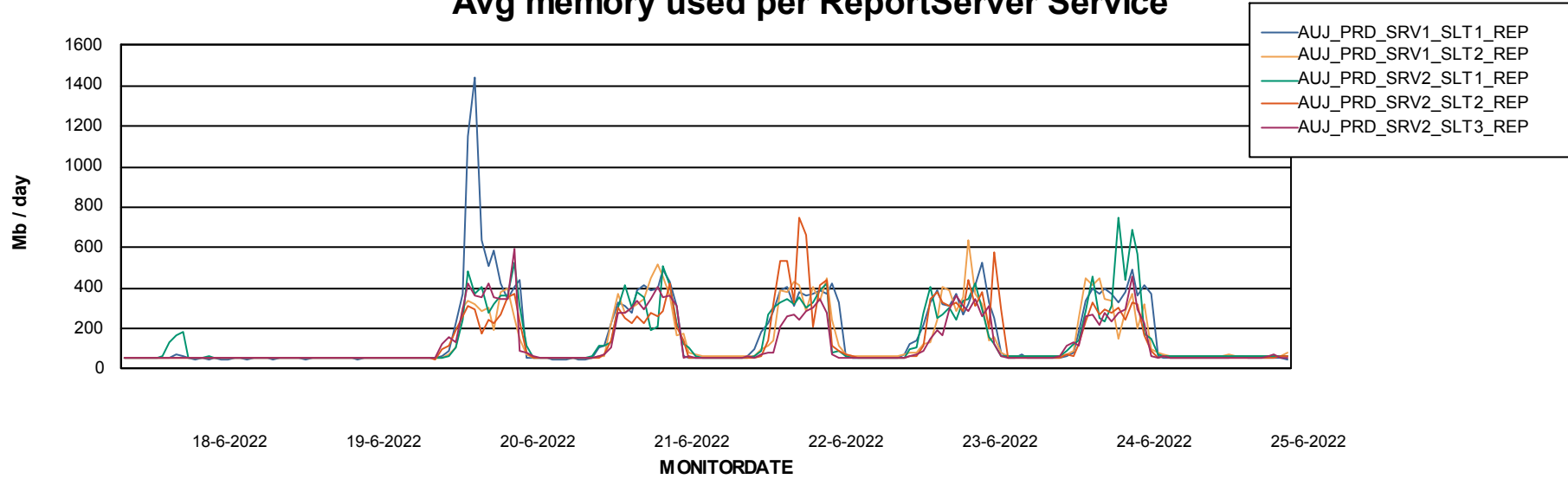
Weekly SLA Customer Report

Customer AUJ Production
Database ID 41



ABSSolute Application ReportServer Services

Avg memory used per ReportServer Service



Disaster per ABS component

