

# Weekly SLA Customer Report

Customer JSG\_Production  
Database ID 102



## Harddisk Usage JSG\_PRD\_CRUSHER

	Free disk space on C: (%)	Total disk space on C: (Gb)	Used disk space on C: (Gb)
11-6-2022	33	79	53
10-6-2022	33	79	53
9-6-2022	33	79	53
8-6-2022	33	79	53
7-6-2022	33	79	53
6-6-2022	33	79	53
5-6-2022	33	79	53

## Harddisk Usage JSG\_PRD\_CYPHER

	Free disk space on C: (%)	Total disk space on C: (Gb)	Used disk space on C: (Gb)
11-6-2022	49	79	41
10-6-2022	49	79	41
9-6-2022	49	79	41
8-6-2022	49	79	41
7-6-2022	49	79	41
6-6-2022	49	79	41
5-6-2022	49	79	41

# Weekly SLA Customer Report

Customer JSG\_Production  
Database ID 102



## Harddisk Usage JSG\_PRD\_GUINAN

	Free disk space on C: (%)	Total disk space on C: (Gb)	Used disk space on C: (Gb)
11-6-2022	60	79	32
10-6-2022	60	79	32
9-6-2022	60	79	32
8-6-2022	60	79	32
7-6-2022	60	79	32
6-6-2022	60	79	32
5-6-2022	60	79	32

## Harddisk Usage JSG\_PRD\_LAFORGE

	Free disk space on C: (%)	Total disk space on C: (Gb)	Used disk space on C: (Gb)
11-6-2022	22	149	117
10-6-2022	22	149	116
9-6-2022	22	149	116
8-6-2022	22	149	116
7-6-2022	22	149	116
6-6-2022	22	149	116
5-6-2022	23	149	116

# Weekly SLA Customer Report

Customer JSG\_Production  
 Database ID 102



Harddisk Usage JSG\_PRD\_PICARD

	Free disk space on C: (%)	Total disk space on C: (Gb)	Used disk space on C: (Gb)	Free disk space on D: (%)	Total disk space on D: (Gb)	Used disk space on D: (Gb)
11-6-2022	55	149	67	53	1,024	477
10-6-2022	55	149	67	54	1,024	469
9-6-2022	55	149	67	56	1,024	450
8-6-2022	55	149	67	61	1,024	401
7-6-2022	55	149	67	30	1,024	715
6-6-2022	55	149	67	17	1,024	847
5-6-2022	55	149	67	18	1,024	842

Harddisk Usage JSG\_PRD\_RIKER

	Free disk space on C: (%)	Total disk space on C: (Gb)	Used disk space on C: (Gb)	Free disk space on D: (%)	Total disk space on D: (Gb)	Used disk space on D: (Gb)
11-6-2022	71	199	58	60	1,024	411
10-6-2022	71	199	58	59	1,024	417
9-6-2022	71	199	58	59	1,024	418
8-6-2022	71	199	58	59	1,024	419
7-6-2022	71	199	58	59	1,024	418
6-6-2022	71	199	58	59	1,024	422
5-6-2022	71	199	58	59	1,024	420

# Weekly SLA Customer Report

Customer JSG\_Production  
Database ID 102



## Harddisk Usage JSG\_PRD\_SAREK

	Free disk space on C: (%)	Total disk space on C: (Gb)	Used disk space on C: (Gb)	Free disk space on D: (%)	Total disk space on D: (Gb)	Used disk space on D: (Gb)
11-6-2022	64	149	54	27	750	544
10-6-2022	64	149	54	26	750	556
9-6-2022	64	149	54	26	750	556
8-6-2022	64	149	54	27	750	550
7-6-2022	64	149	54	28	750	543
6-6-2022	64	149	54	28	750	540
5-6-2022	64	149	54	28	750	539

## Harddisk Usage JSG\_PRD\_TEBOK

	Free disk space on C: (%)	Total disk space on C: (Gb)	Used disk space on C: (Gb)
11-6-2022	54	79	36
10-6-2022	54	79	36
9-6-2022	55	79	36
8-6-2022	55	79	36
7-6-2022	55	79	36
6-6-2022	55	79	36
5-6-2022	55	79	36

# Weekly SLA Customer Report

Customer JSG\_Production  
 Database ID 102



Harddisk Usage JSG\_PRD\_TOMALAK

	Free disk space on C: (%)	Total disk space on C: (Gb)	Used disk space on C: (Gb)
11-6-2022	49	79	41
10-6-2022	49	79	41
9-6-2022	49	79	41
8-6-2022	49	79	41
7-6-2022	49	79	41
6-6-2022	49	79	41
5-6-2022	49	79	41

Harddisk Usage JSG\_PRD\_TROI

	Free disk space on C: (%)	Total disk space on C: (Gb)	Used disk space on C: (Gb)
11-6-2022	35	149	97
10-6-2022	35	149	97
9-6-2022	36	149	96
8-6-2022	36	149	96
7-6-2022	36	149	96
6-6-2022	36	149	96
5-6-2022	35	149	97

# Weekly SLA Customer Report

Customer JSG\_Production  
Database ID 102



Harddisk Usage JSG\_PRD\_WORF

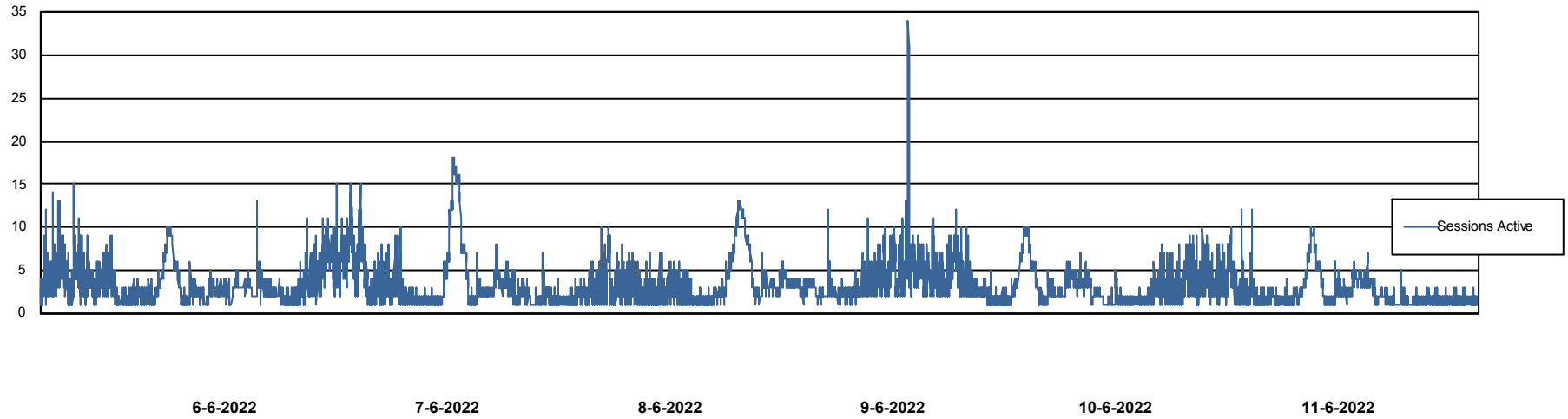
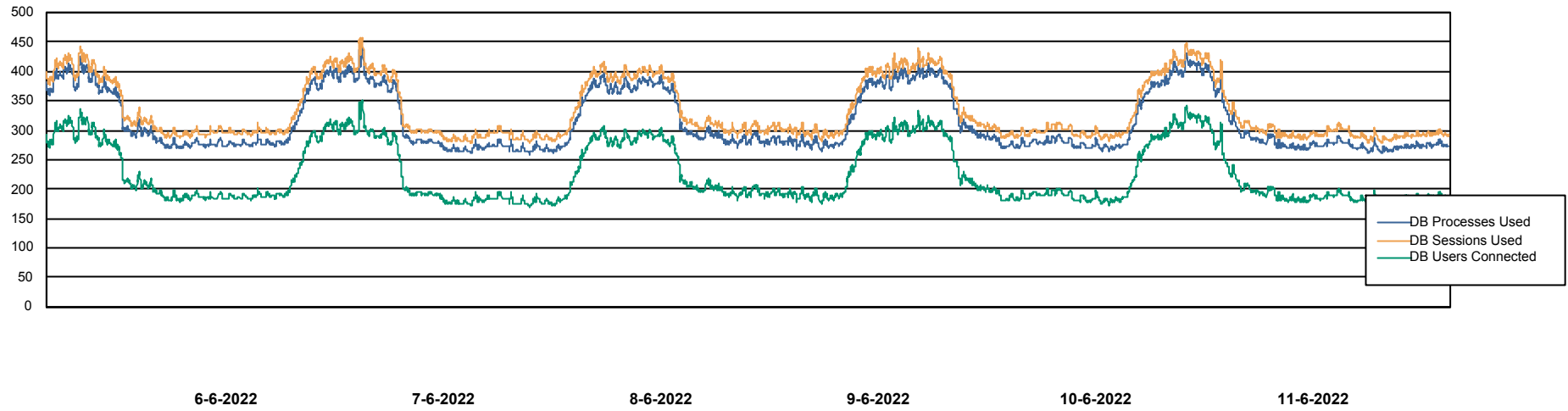
	Free disk space on C: (%)	Total disk space on C: (Gb)	Used disk space on C: (Gb)
11-6-2022	40	149	90
10-6-2022	40	149	90
9-6-2022	40	149	90
8-6-2022	40	149	90
7-6-2022	40	149	90
6-6-2022	40	149	90
5-6-2022	40	149	89

# Weekly SLA Customer Report

Customer JSG\_Production  
Database ID 102



## Database Performance JSG\_PRD\_PICARD\_DB



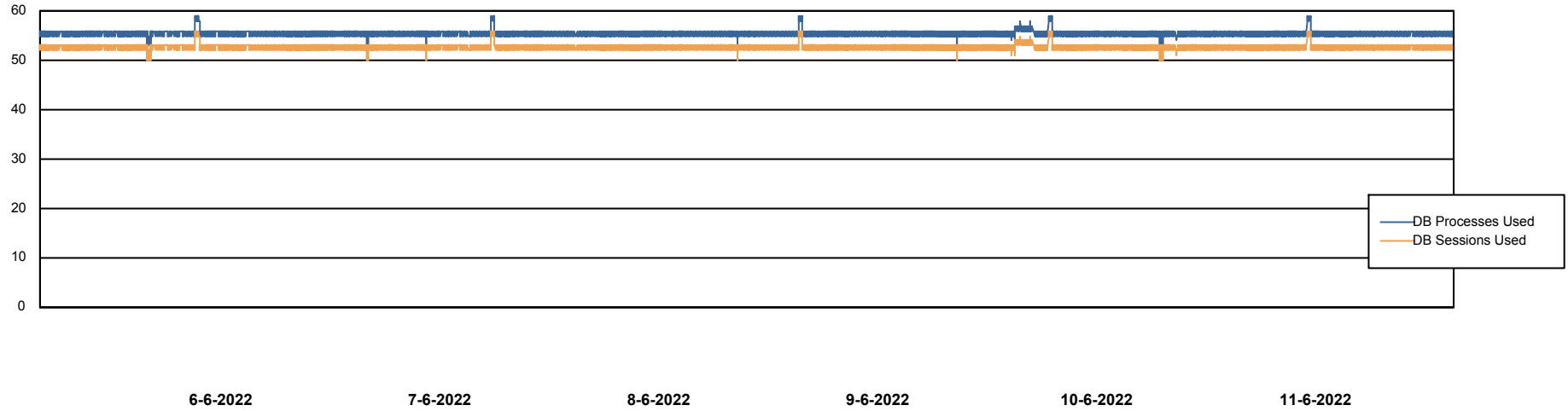
# Weekly SLA Customer Report

Customer JSG\_Production  
Database ID 102



## Database Performance JSG\_PRD\_RIKER\_DB

DB Processes Max 1,000  
DB Processes Max 4  
DB Processes Max 0

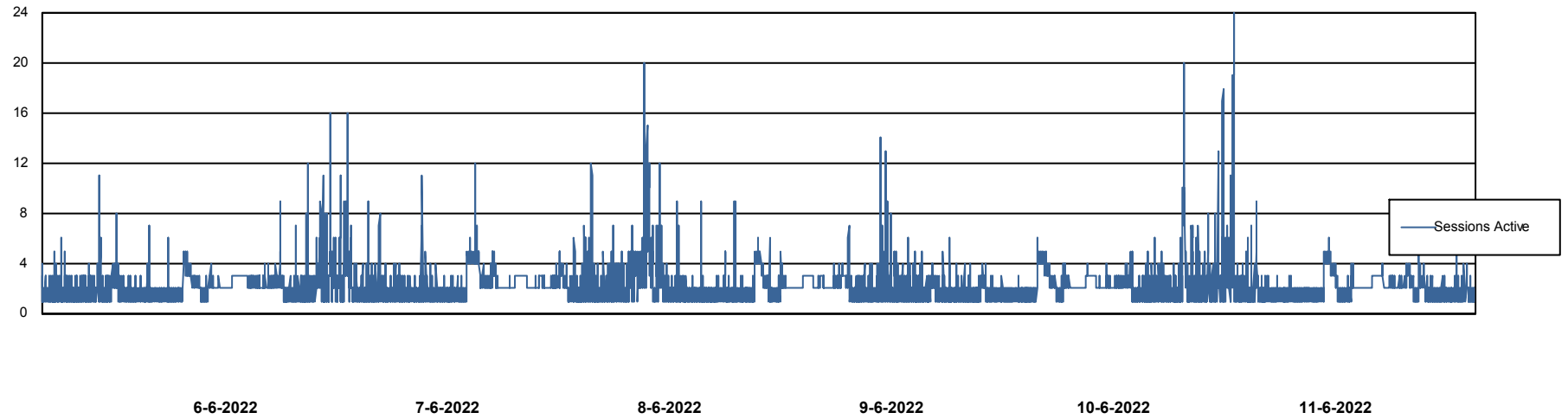
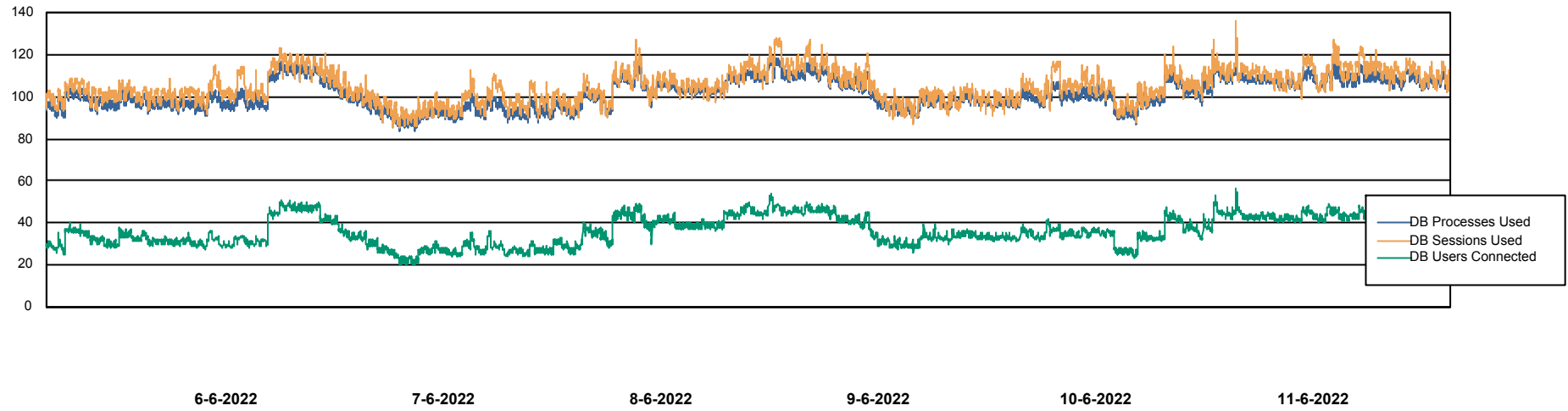


# Weekly SLA Customer Report

Customer JSG\_Production  
Database ID 102



## Database Performance JSG\_PRD\_SAREK\_DB



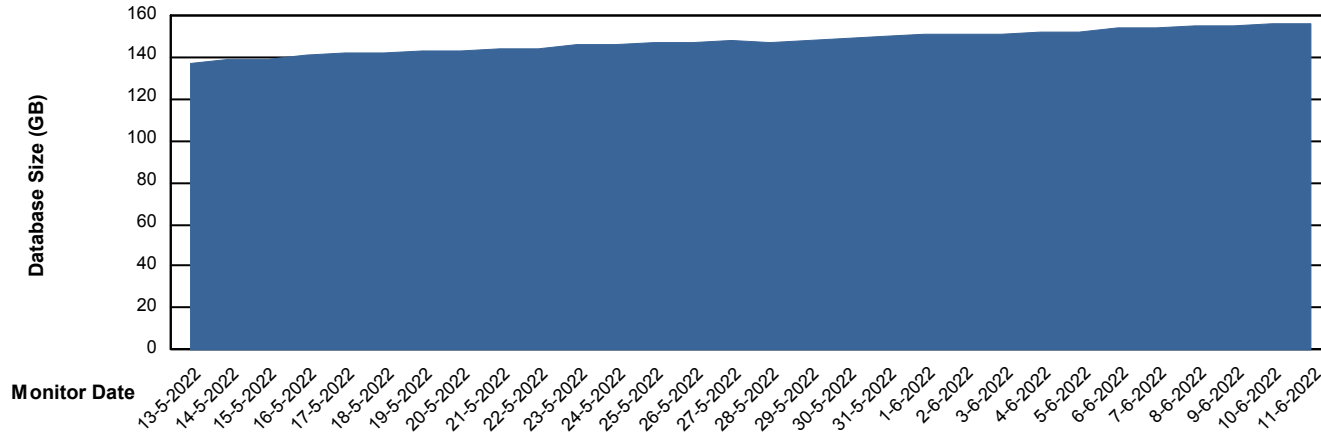
# Weekly SLA Customer Report

Customer JSG\_Production  
Database ID 102



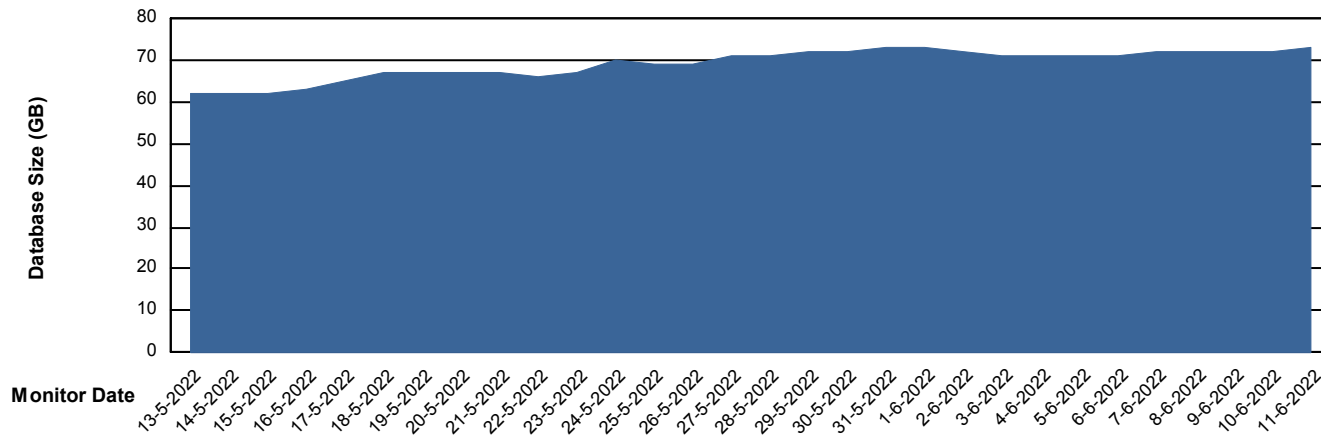
DATABASE SIZE JSG\_PRD\_PICARD\_DB

### Database growth over last month



DATABASE SIZE JSG\_PRD\_SAREK\_DB

### Database growth over last month



# Weekly SLA Customer Report

Customer JSG\_Production  
 Database ID 102



Database Tablespace JSG\_PRD\_PICARD\_DB

Date	Tablespace Name	Filesize (Gb)	Usedsize (Gb)	Percentage free
11-6-2022	ABSDATA	156	130	17
	INDX	50	7	87
10-6-2022	ABSDATA	156	130	17
	INDX	50	7	87
9-6-2022	ABSDATA	156	129	17
	INDX	50	6	87
8-6-2022	ABSDATA	156	129	18
	INDX	50	6	87
7-6-2022	ABSDATA	152	128	16
	INDX	50	6	87
6-6-2022	ABSDATA	152	128	16
	INDX	50	6	87
5-6-2022	ABSDATA	152	126	17
	INDX	50	6	87

# Weekly SLA Customer Report

Customer JSG\_Production  
 Database ID 102



Database Tablespace JSG\_PRD\_SAREK\_DB

Date	Tablespace Name	Filesize (Gb)	Usedsize (Gb)	Percentage free
11-6-2022	ABSDATA	48	42	12
	INDX	40	28	30
10-6-2022	ABSDATA	48	42	13
	INDX	40	28	30
9-6-2022	ABSDATA	48	42	13
	INDX	40	28	31
8-6-2022	ABSDATA	48	42	13
	INDX	40	28	31
7-6-2022	ABSDATA	48	42	13
	INDX	40	28	31
6-6-2022	ABSDATA	48	41	14
	INDX	40	27	32
5-6-2022	ABSDATA	48	41	14
	INDX	40	27	33

BI Status and last ETL error for JSG\_PRD\_SAREK\_DB

	ma 6/6/2022	di 7/6/2022	wo 8/6/2022	do 9/6/2022	vr 10/6/2022	za 11/6/2022
<b>ABS DataWarehouse ETL Health</b>	OK	OK	OK	OK	OK	OK
<b>ABS DWHStaging ETL Health</b>	OK	OK	OK	OK	OK	OK

# Weekly SLA Customer Report

Customer JSG\_Production  
Database ID 102



BI last ETL error for	JSG_PRD_SAREK_DB
zo, 5-06-2022	None
di, 7-06-2022	None
wo, 8-06-2022	None
wo, 8-06-2022	None
vr, 10-06-2022	None
za, 11-06-2022	None
ma, 6-06-2022	None
za, 11-06-2022	None
do, 9-06-2022	None
do, 9-06-2022	None
ma, 6-06-2022	None
zo, 5-06-2022	None
vr, 10-06-2022	None
di, 7-06-2022	None

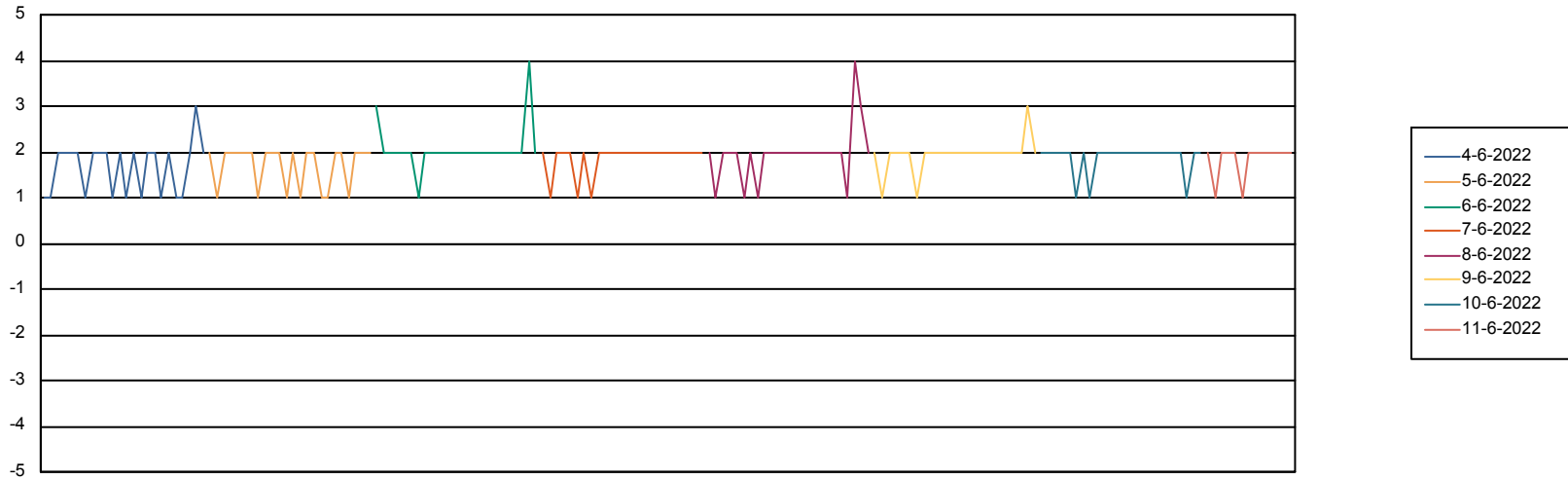
# Weekly SLA Customer Report

Customer JSG\_Production  
Database ID 102



Standby Database Health JSG\_Production

### Recovery lag for last 7 days



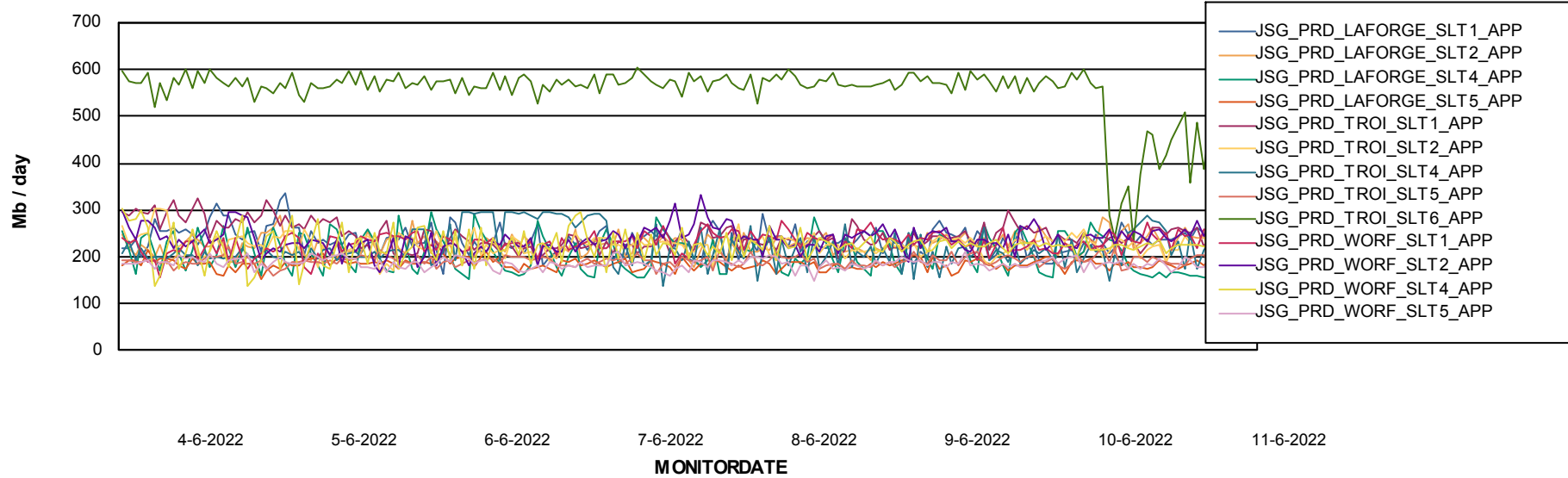
# Weekly SLA Customer Report

Customer JSG\_Production  
Database ID 102

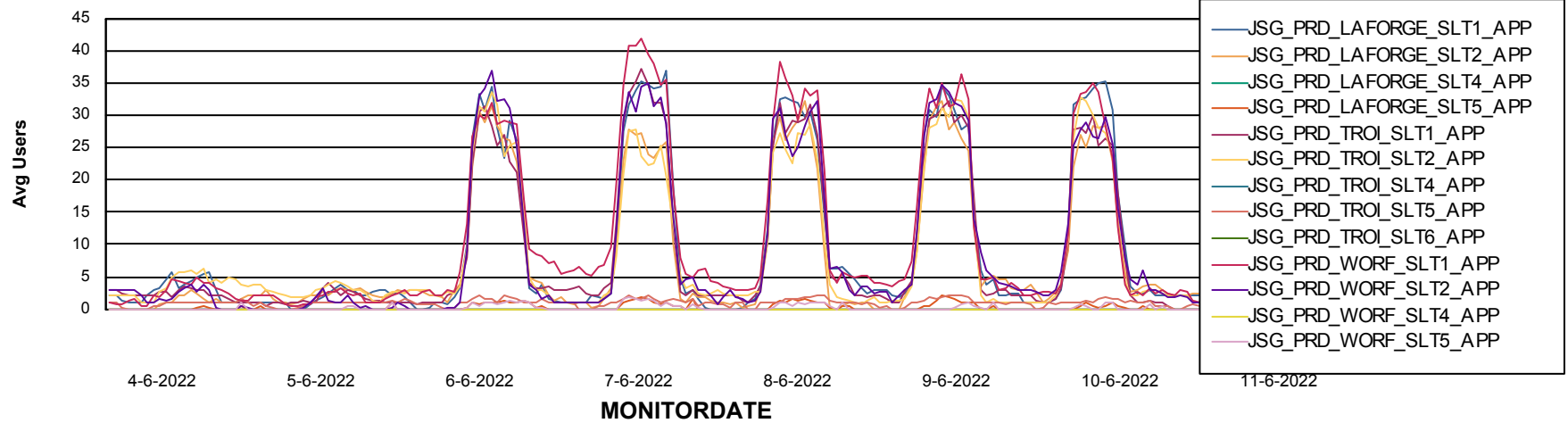


## ABSSolute Application Server Services

### Avg memory used per ABS Server Service



### Avg users per day per ABS server



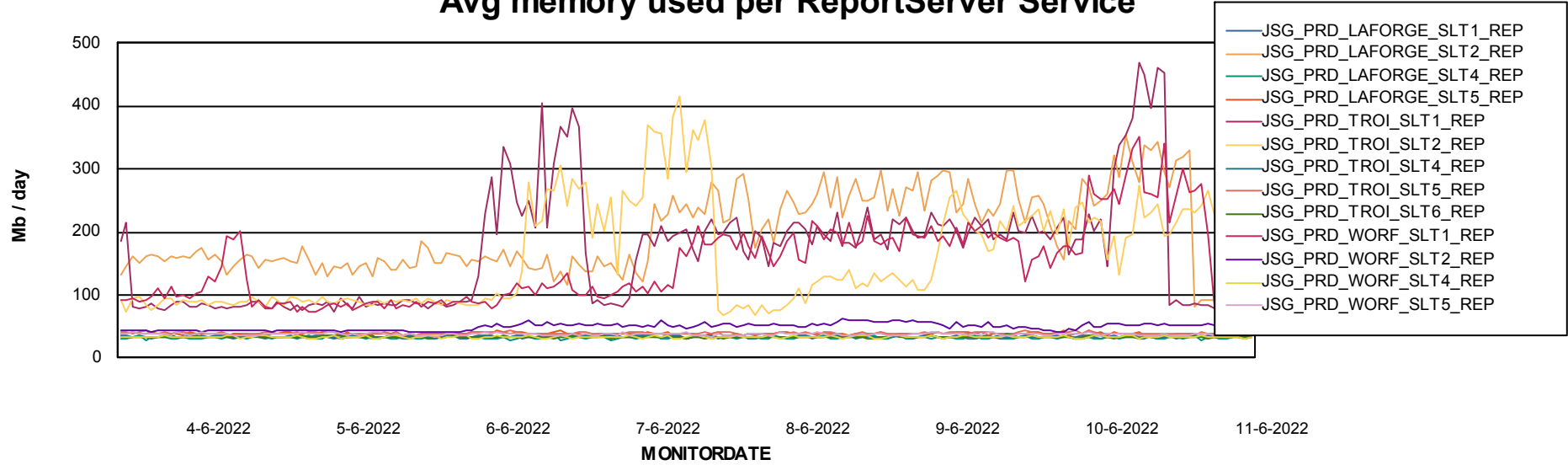
# Weekly SLA Customer Report

Customer JSG\_Production  
Database ID 102



## ABSSolute Application ReportServer Services

### Avg memory used per ReportServer Service



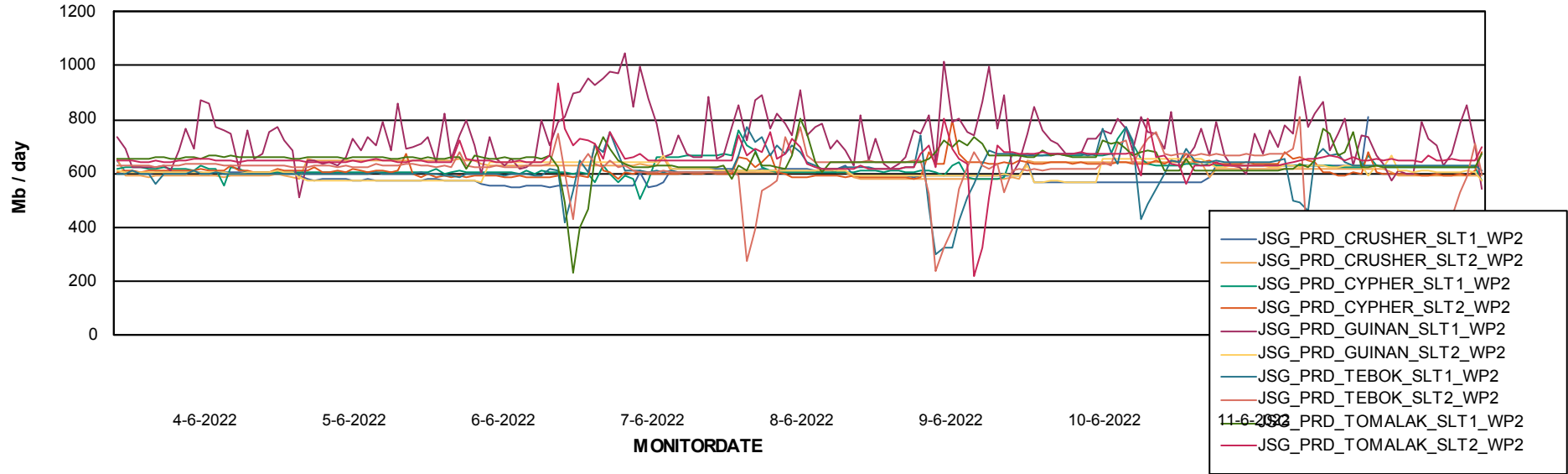
# Weekly SLA Customer Report

Customer JSG\_Production  
Database ID 102



## ABSSolute Web Component Services

### Avg memory used per ABS Web component



# Weekly SLA Customer Report

Customer JSG\_Production  
Database ID 102



## Disaster per ABS component

