

Weekly SLA Customer Report

Customer KBR_Production
 Database ID 117



Harddisk Usage BI-DBSRV

	Free disk space on C: (%)	Total disk space on C: (Gb)	Used disk space on C: (Gb)	Free disk space on D: (%)	Total disk space on D: (Gb)	Used disk space on D: (Gb)	Free disk space on E: (%)	Total disk space on E: (Gb)	Used disk space on E: (Gb)
28-5-2022	29	100	70	91	500	43	61	310	120
27-5-2022	29	100	70	91	500	43	62	310	119
26-5-2022	29	100	70	91	500	43	61	310	120
25-5-2022	29	100	70	91	500	43	61	310	121
24-5-2022	29	100	70	91	500	43	61	310	121
23-5-2022	29	100	70	91	500	43	62	310	118
22-5-2022	29	100	71	91	500	43	64	310	113

Harddisk Usage KBR_PRD_APPSRV1

	Free disk space on C: (%)	Total disk space on C: (Gb)	Used disk space on C: (Gb)
28-5-2022	49	149	76
27-5-2022	49	149	76
26-5-2022	49	149	76
25-5-2022	49	149	76
24-5-2022	49	149	76
23-5-2022	49	149	76
22-5-2022	49	149	76

Weekly SLA Customer Report

Customer KBR_Production
Database ID 117



Harddisk Usage KBR_PRD_APPSRV2

	Free disk space on C: (%)	Total disk space on C: (Gb)	Used disk space on C: (Gb)
28-5-2022	34	99	66
27-5-2022	34	99	66
26-5-2022	34	99	66
25-5-2022	34	99	66
24-5-2022	34	99	66
23-5-2022	34	99	66
22-5-2022	34	99	66

Harddisk Usage KBR_PRD_DB-SRV1

	Free disk space on C: (%)	Total disk space on C: (Gb)	Used disk space on C: (Gb)	Free disk space on D: (%)	Total disk space on D: (Gb)	Used disk space on D: (Gb)	Free disk space on E: (%)	Total disk space on E: (Gb)	Used disk space on E: (Gb)
28-5-2022	40	99	60	96	800	34	89	400	46
27-5-2022	40	99	60	96	800	34	88	400	47
26-5-2022	40	99	60	96	800	34	88	400	47
25-5-2022	40	99	60	96	800	34	88	400	47
24-5-2022	40	99	60	96	800	34	88	400	47
23-5-2022	40	99	60	96	800	34	88	400	46
22-5-2022	40	99	60	96	800	34	88	400	47

Weekly SLA Customer Report

Customer KBR_Production
Database ID 117



Harddisk Usage KBR_PRD_WEBSRV1

	Free disk space on / (%)	Total disk space on / (Gb)	Used disk space on / (Gb)	Free disk space on /boot (%)	Total disk space on /boot (Gb)	Used disk space on /boot (Gb)
28-5-2022	79	55	12	60	1	0
27-5-2022	79	55	12	60	1	0
26-5-2022	79	55	12	60	1	0
25-5-2022	79	55	12	60	1	0
24-5-2022	79	55	12	60	1	0
23-5-2022	79	55	12	60	1	0
22-5-2022	79	55	12	60	1	0

Harddisk Usage KBR_PRD_WEBSRV2

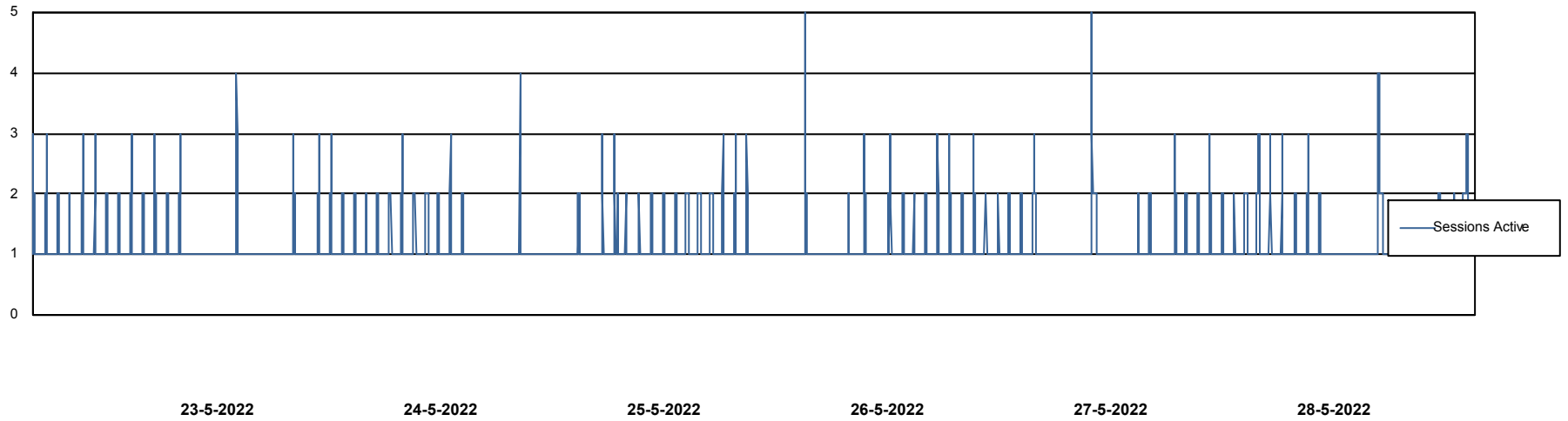
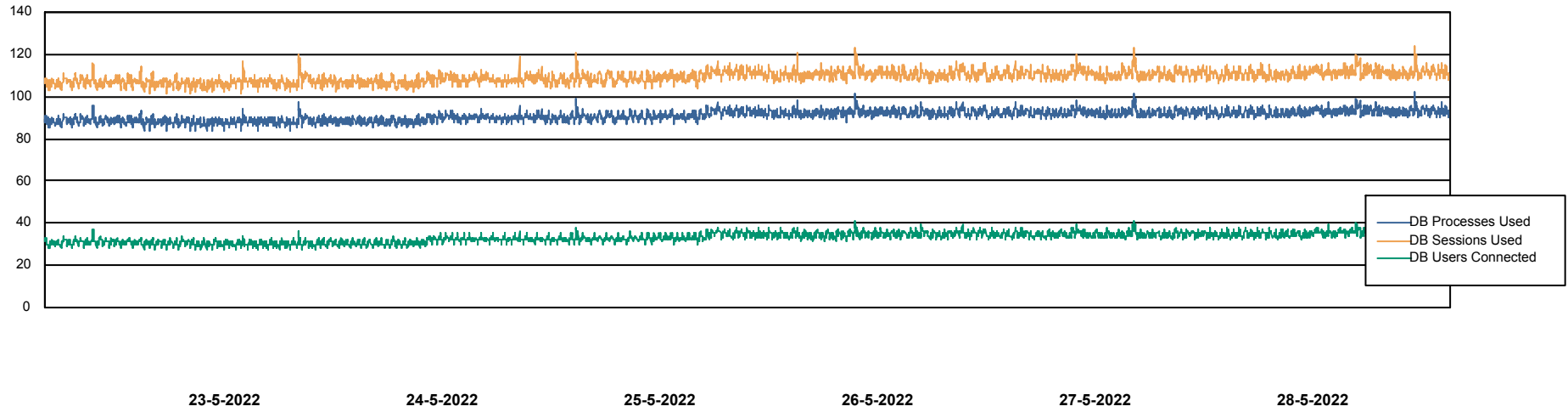
	Free disk space on / (%)	Total disk space on / (Gb)	Used disk space on / (Gb)	Free disk space on /boot (%)	Total disk space on /boot (Gb)	Used disk space on /boot (Gb)
28-5-2022	81	55	10	62	1	0
27-5-2022	81	55	10	62	1	0
26-5-2022	81	55	10	62	1	0
25-5-2022	81	55	10	62	1	0
24-5-2022	82	55	10	62	1	0
23-5-2022	82	55	10	62	1	0
22-5-2022	82	55	10	62	1	0

Weekly SLA Customer Report

Customer KBR_Production
Database ID 117



Database Performance BI-DBSRV_DB

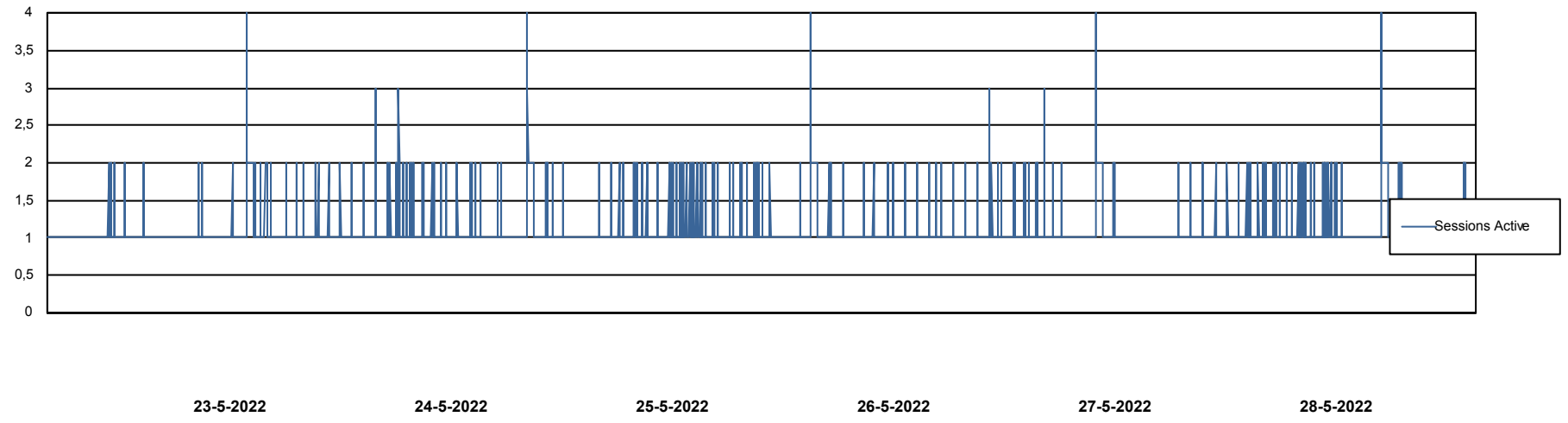
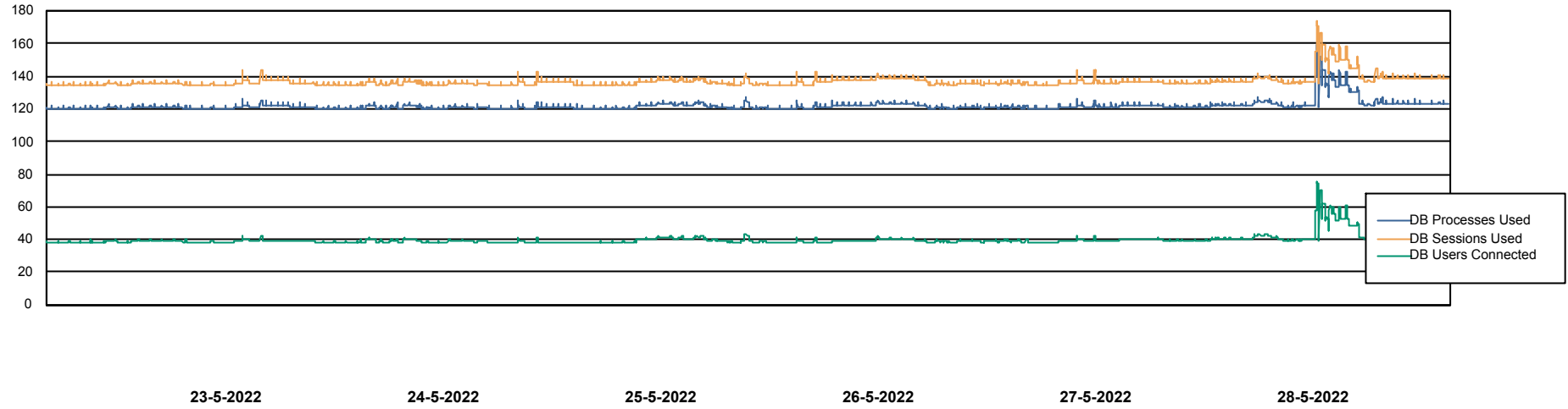


Weekly SLA Customer Report

Customer KBR_Production
Database ID 117



Database Performance KBR_PRD_DB-SRV1_DB



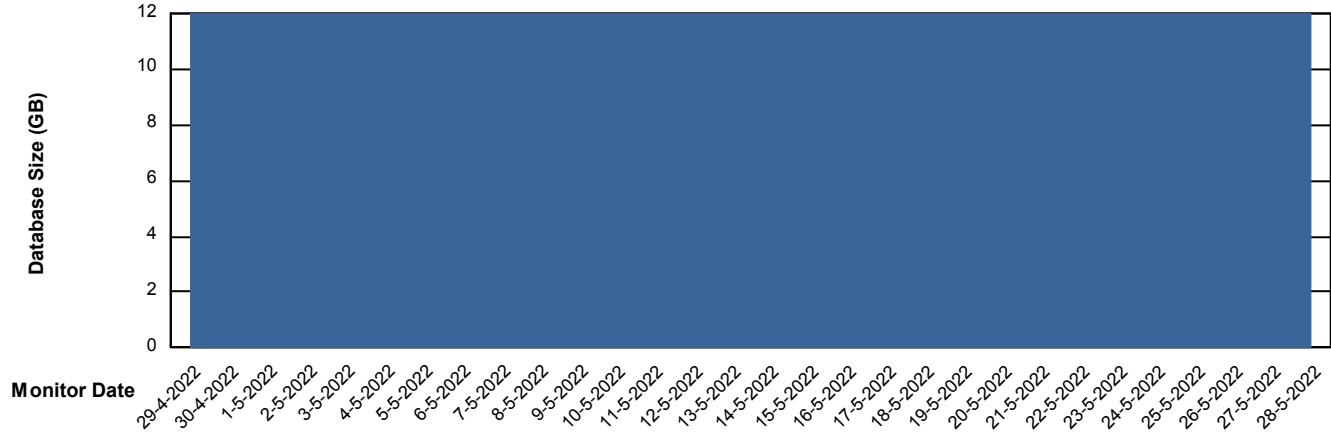
Weekly SLA Customer Report

Customer KBR_Production
Database ID 117



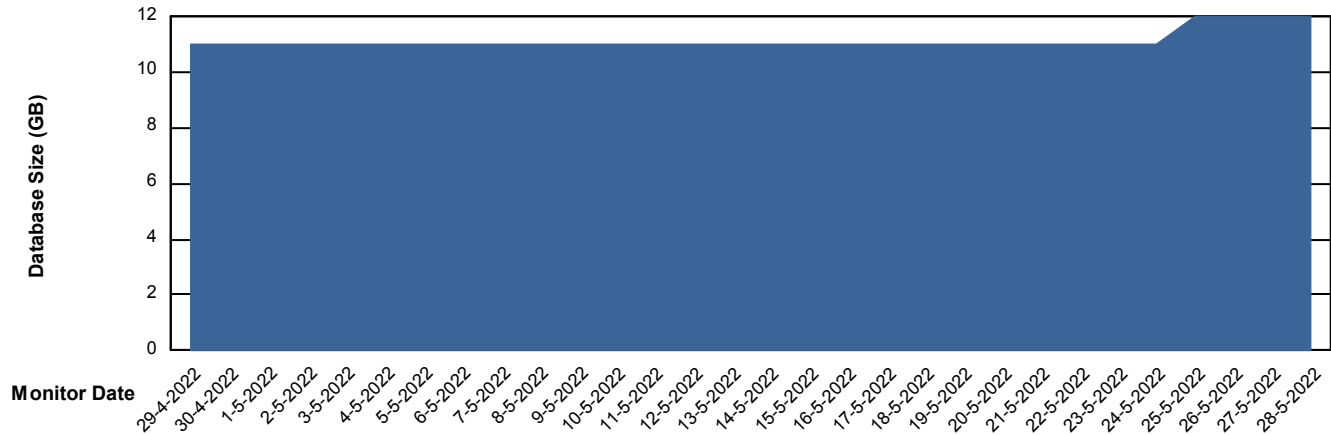
DATABASE SIZE BI-DBSRV_DB

Database growth over last month



DATABASE SIZE KBR_PRD_DB-SRV1_DB

Database growth over last month



Weekly SLA Customer Report

Customer KBR_Production
 Database ID 117



Database Tablespace BI-DBSRV_DB

Date	Tablespace Name	Filesize (Gb)	Usedsize (Gb)	Percentage free
28-5-2022	ABSDATA	6	5	22
	INDX	8	5	38
27-5-2022	ABSDATA	6	4	26
	INDX	8	5	38
26-5-2022	ABSDATA	6	4	26
	INDX	8	5	39
25-5-2022	ABSDATA	6	4	26
	INDX	8	5	39
24-5-2022	ABSDATA	6	4	26
	INDX	8	5	39
23-5-2022	ABSDATA	6	4	26
	INDX	8	5	39
22-5-2022	ABSDATA	6	4	27
	INDX	8	5	40

Weekly SLA Customer Report

Customer KBR_Production
 Database ID 117



Database Tablespace KBR_PRD_DB-SRV1_DB

Date	Tablespace Name	Filesize (Gb)	Usedsize (Gb)	Percentage free
28-5-2022	ABSDATA	8	4	48
	INDX	8	1	87
27-5-2022	ABSDATA	8	4	48
	INDX	8	1	87
26-5-2022	ABSDATA	8	4	48
	INDX	8	1	87
25-5-2022	ABSDATA	8	4	49
	INDX	8	1	87
24-5-2022	ABSDATA	8	4	49
	INDX	8	1	87
23-5-2022	ABSDATA	8	4	49
	INDX	8	1	87
22-5-2022	ABSDATA	8	4	49
	INDX	8	1	88

BI Status and last ETL error for BI-DBSRV_DB

	ma 23/5/2022	di 24/5/2022	wo 25/5/2022	do 26/5/2022	vr 27/5/2022	za 28/5/2022
ABS DataWarehouse ETL Health	OK	OK	OK	OK	OK	OK
ABS DWHStaging ETL Health	OK	OK	OK	OK	OK	OK

Weekly SLA Customer Report

Customer KBR_Production
Database ID 117



BI last ETL error for	BI-DBSRV_DB
vr, 27-05-2022	None
wo, 25-05-2022	None
vr, 27-05-2022	None
di, 24-05-2022	None
zo, 22-05-2022	None
ma, 23-05-2022	None
di, 24-05-2022	None
za, 28-05-2022	None
ma, 23-05-2022	None
za, 28-05-2022	None
zo, 22-05-2022	ORA-03135: connection lost contact
zo, 22-05-2022	None
wo, 25-05-2022	None
do, 26-05-2022	None
do, 26-05-2022	None

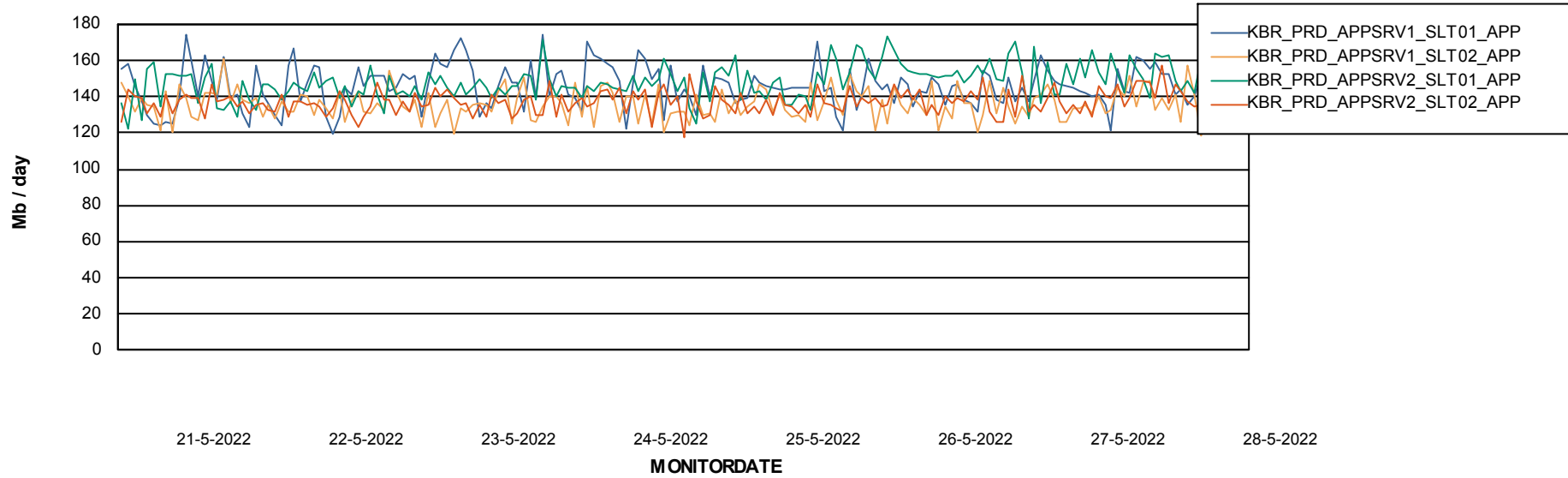
Weekly SLA Customer Report

Customer KBR_Production
Database ID 117



ABSolute Application Server Services

Avg memory used per ABS Server Service



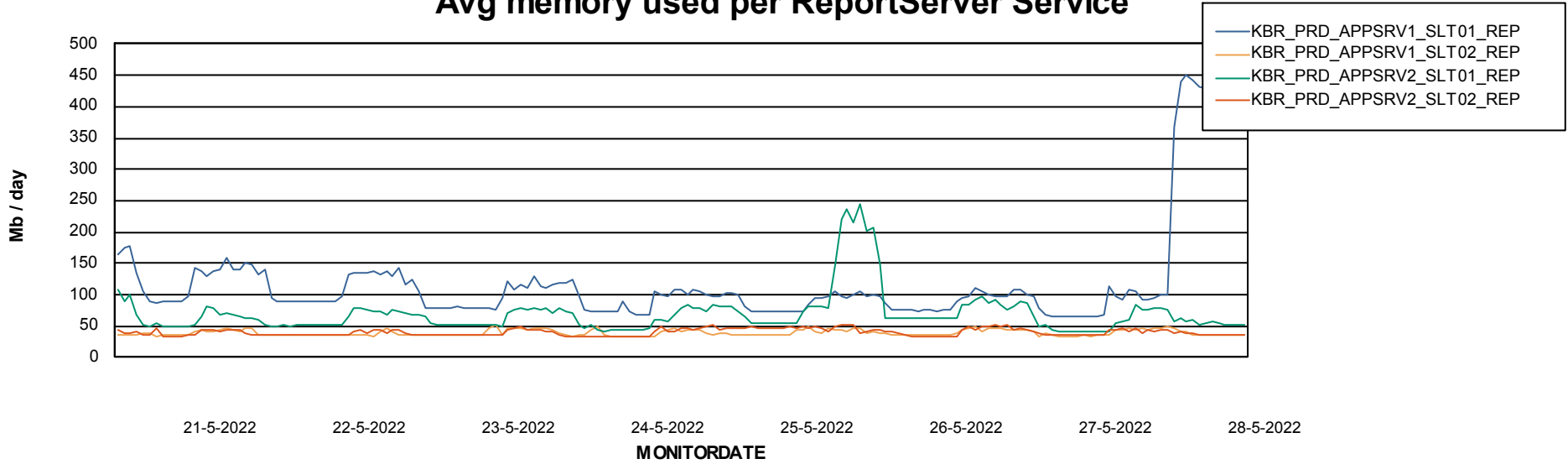
Weekly SLA Customer Report

Customer KBR_Production
Database ID 117

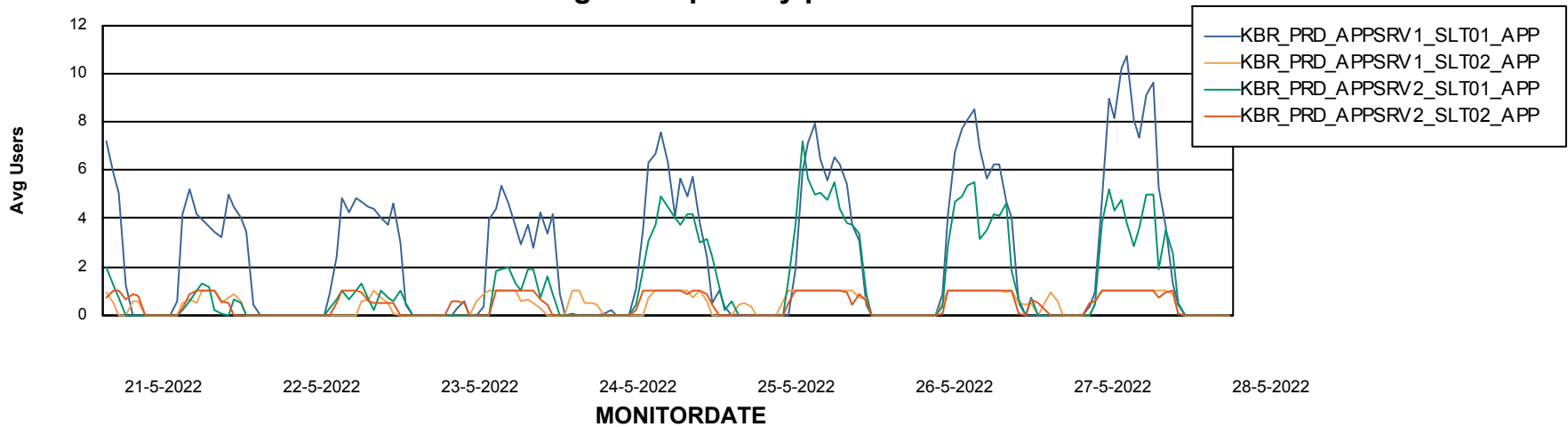


ABSSolute Application Server Services

Avg memory used per ReportServer Service



Avg users per day per ABS server



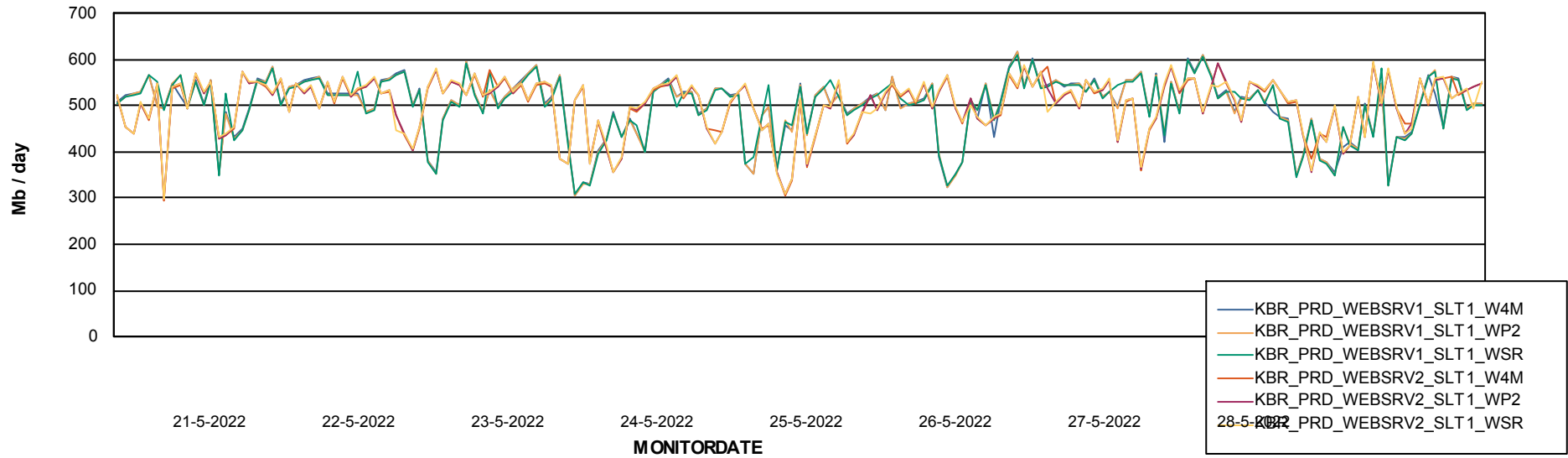
Weekly SLA Customer Report

Customer KBR_Production
Database ID 117



ABSSolute Web Component Services

Avg memory used per ABS Web component



Weekly SLA Customer Report

Customer KBR_Production
Database ID 117



Disaster per ABS component

