

# Weekly SLA Customer Report

Customer KBR\_Production  
 Database ID 117



Harddisk Usage BI-DBSRV

	Free disk space on C: (%)	Total disk space on C: (Gb)	Used disk space on C: (Gb)	Free disk space on D: (%)	Total disk space on D: (Gb)	Used disk space on D: (Gb)	Free disk space on E: (%)	Total disk space on E: (Gb)	Used disk space on E: (Gb)
21-5-2022	29	100	70	91	500	43	61	310	119
20-5-2022	30	100	70	91	500	43	62	310	118
19-5-2022	30	100	69	91	500	43	62	310	119
18-5-2022	31	100	69	91	500	43	61	310	119
17-5-2022	31	100	69	91	500	43	61	310	120
16-5-2022	31	100	69	91	500	43	62	310	117
15-5-2022	32	100	68	91	500	43	64	310	111

Harddisk Usage KBR\_PRD\_APPSRV1

	Free disk space on C: (%)	Total disk space on C: (Gb)	Used disk space on C: (Gb)
21-5-2022	49	149	76
20-5-2022	49	149	76
19-5-2022	47	149	79
18-5-2022	46	149	80
17-5-2022	46	149	80
16-5-2022	46	149	80
15-5-2022	47	149	80

# Weekly SLA Customer Report

Customer KBR\_Production  
Database ID 117



## Harddisk Usage KBR\_PRD\_APPSRV2

	Free disk space on C: (%)	Total disk space on C: (Gb)	Used disk space on C: (Gb)
21-5-2022	34	99	66
20-5-2022	34	99	66
19-5-2022	27	99	73
18-5-2022	23	99	76
17-5-2022	23	99	76
16-5-2022	24	99	76
15-5-2022	24	99	76

## Harddisk Usage KBR\_PRD\_DB-SRV1

	Free disk space on C: (%)	Total disk space on C: (Gb)	Used disk space on C: (Gb)	Free disk space on D: (%)	Total disk space on D: (Gb)	Used disk space on D: (Gb)	Free disk space on E: (%)	Total disk space on E: (Gb)	Used disk space on E: (Gb)
21-5-2022	40	99	60	96	800	34	88	400	47
20-5-2022	40	99	60	96	800	34	88	400	47
19-5-2022	40	99	60	96	800	34	88	400	46
18-5-2022	40	99	60	96	800	34	88	400	48
17-5-2022	40	99	60	96	800	34	88	400	47
16-5-2022	40	99	60	96	800	34	88	400	47
15-5-2022	40	99	60	96	800	34	88	400	47

# Weekly SLA Customer Report

Customer KBR\_Production  
Database ID 117



## Harddisk Usage KBR\_PRD\_WEBSRV1

	Free disk space on / (%)	Total disk space on / (Gb)	Used disk space on / (Gb)	Free disk space on /boot (%)	Total disk space on /boot (Gb)	Used disk space on /boot (Gb)
21-5-2022	79	55	12	60	1	0
20-5-2022	79	55	12	60	1	0
19-5-2022	79	55	12	60	1	0
18-5-2022	79	55	11	60	1	0
17-5-2022	79	55	11	60	1	0
16-5-2022	79	55	11	60	1	0
15-5-2022	79	55	11	60	1	0

## Harddisk Usage KBR\_PRD\_WEBSRV2

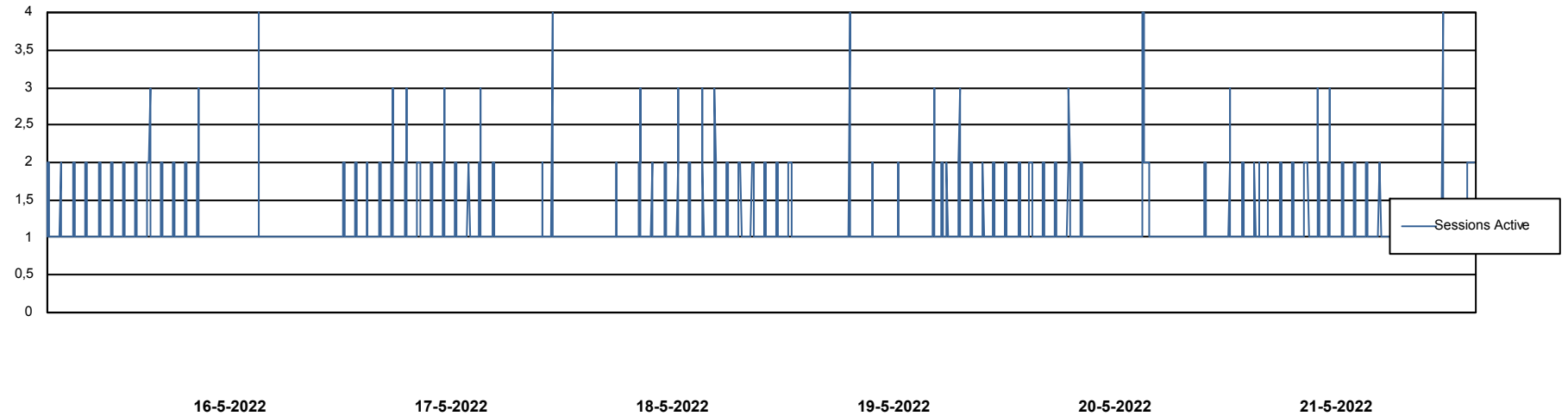
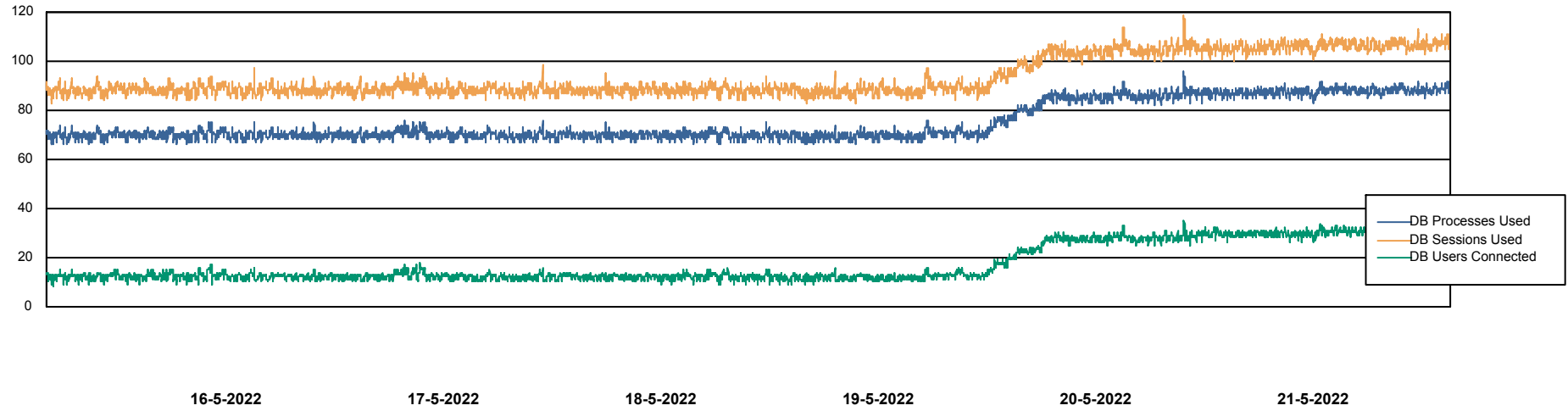
	Free disk space on / (%)	Total disk space on / (Gb)	Used disk space on / (Gb)	Free disk space on /boot (%)	Total disk space on /boot (Gb)	Used disk space on /boot (Gb)
21-5-2022	82	55	10	62	1	0
20-5-2022	82	55	10	62	1	0
19-5-2022	82	55	10	62	1	0
18-5-2022	82	55	10	62	1	0
17-5-2022	82	55	10	62	1	0
16-5-2022	82	55	10	62	1	0
15-5-2022	82	55	10	62	1	0

# Weekly SLA Customer Report

Customer KBR\_Production  
Database ID 117



## Database Performance BI-DBSRV\_DB

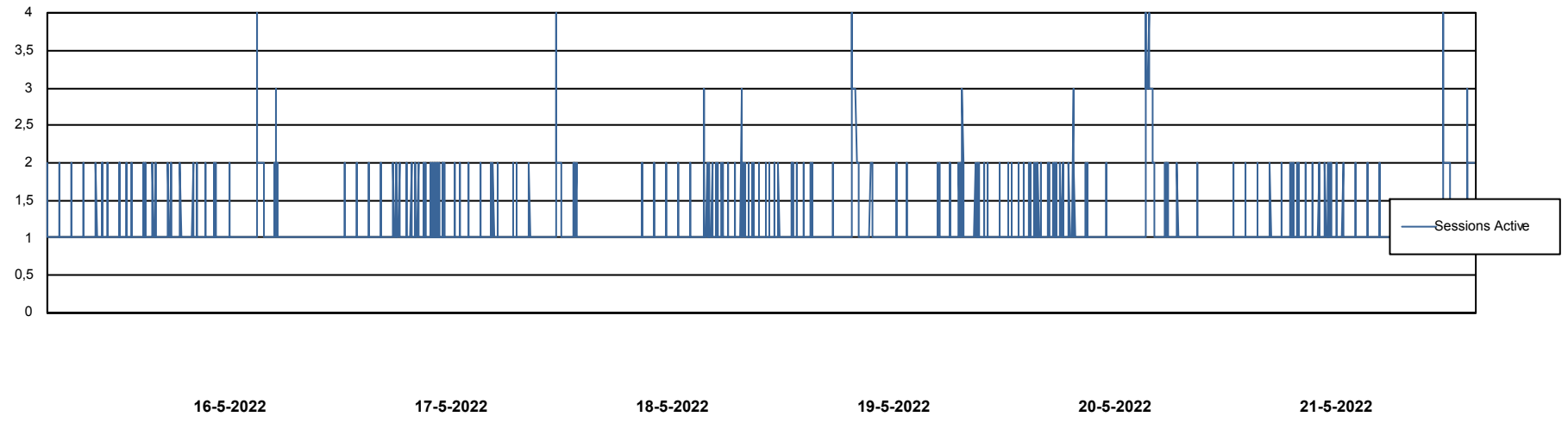
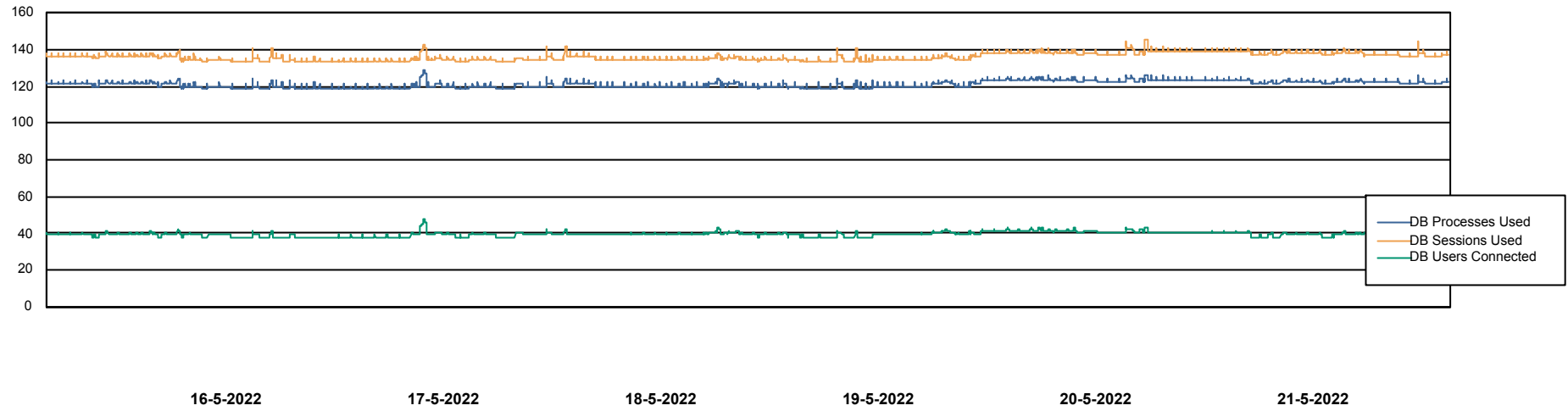


# Weekly SLA Customer Report

Customer KBR\_Production  
Database ID 117



## Database Performance KBR\_PRD\_DB-SRV1\_DB



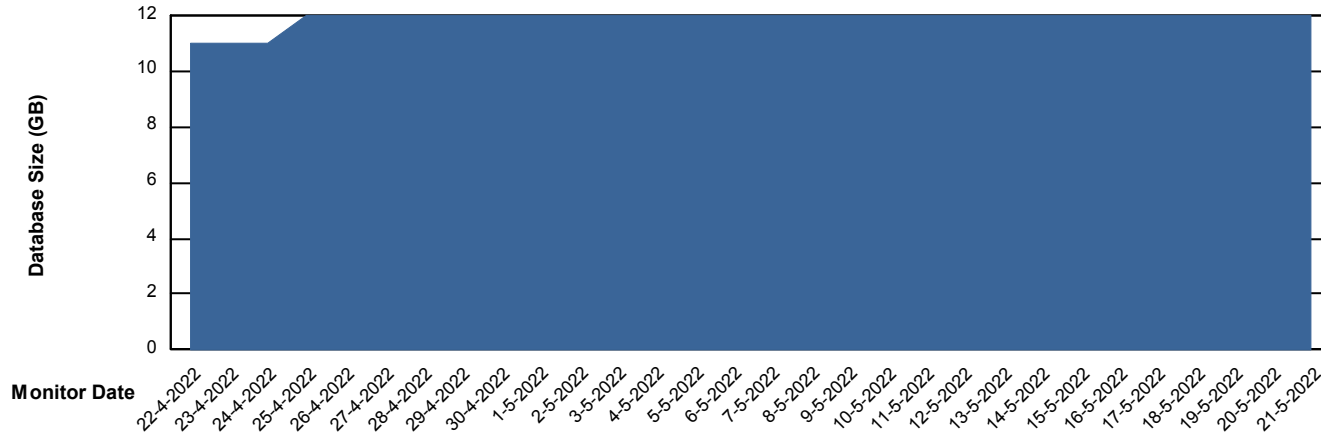
# Weekly SLA Customer Report

Customer KBR\_Production  
Database ID 117



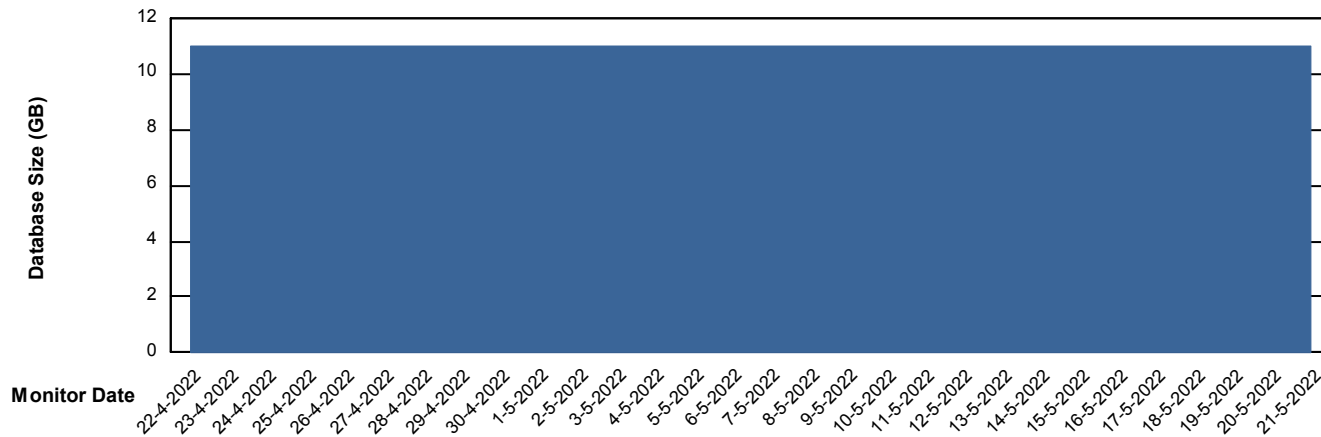
DATABASE SIZE BI-DBSRV\_DB

### Database growth over last month



DATABASE SIZE KBR\_PRD\_DB-SRV1\_DB

### Database growth over last month



# Weekly SLA Customer Report

Customer KBR\_Production  
Database ID 117



## Database Tablespace BI-DBSRV\_DB

Date	Tablespace Name	Filesize (Gb)	Usedsize (Gb)	Percentage free
21-5-2022	ABSDATA	6	4	27
	INDX	8	5	40
20-5-2022	ABSDATA	6	4	27
	INDX	8	5	40
19-5-2022	ABSDATA	6	4	27
	INDX	8	5	40
18-5-2022	ABSDATA	6	4	27
	INDX	8	5	40
17-5-2022	ABSDATA	6	4	27
	INDX	8	5	40
16-5-2022	ABSDATA	6	4	27
	INDX	8	5	40
15-5-2022	ABSDATA	6	4	28
	INDX	8	5	40

# Weekly SLA Customer Report

Customer KBR\_Production  
 Database ID 117



Database Tablespace KBR\_PRD\_DB-SRV1\_DB

Date	Tablespace Name	Filesize (Gb)	Usedsize (Gb)	Percentage free
21-5-2022	ABSDATA	8	4	50
	INDX	8	1	88
20-5-2022	ABSDATA	8	4	50
	INDX	8	1	88
19-5-2022	ABSDATA	8	4	50
	INDX	8	1	88
18-5-2022	ABSDATA	8	4	50
	INDX	8	1	88
17-5-2022	ABSDATA	8	4	50
	INDX	8	1	88
16-5-2022	ABSDATA	8	4	50
	INDX	8	1	88
15-5-2022	ABSDATA	8	4	51
	INDX	8	1	88

BI Status and last ETL error for BI-DBSRV\_DB

	ma 16/5/2022	di 17/5/2022	wo 18/5/2022	do 19/5/2022	vr 20/5/2022	za 21/5/2022
<b>ABS DataWarehouse ETL Health</b>	OK	OK	OK	OK	OK	OK
<b>ABS DWHStaging ETL Health</b>	OK	OK	OK	OK	OK	OK

# Weekly SLA Customer Report

Customer KBR\_Production  
Database ID 117



BI last ETL error for	BI-DBSRV_DB
zo, 15-05-2022	None
wo, 18-05-2022	None
za, 21-05-2022	None
zo, 15-05-2022	ORA-03135: connection lost contact
zo, 15-05-2022	None
do, 19-05-2022	None
za, 21-05-2022	None
ma, 16-05-2022	None
do, 19-05-2022	None
ma, 16-05-2022	None
wo, 18-05-2022	None
vr, 20-05-2022	None
di, 17-05-2022	None
vr, 20-05-2022	None
di, 17-05-2022	None

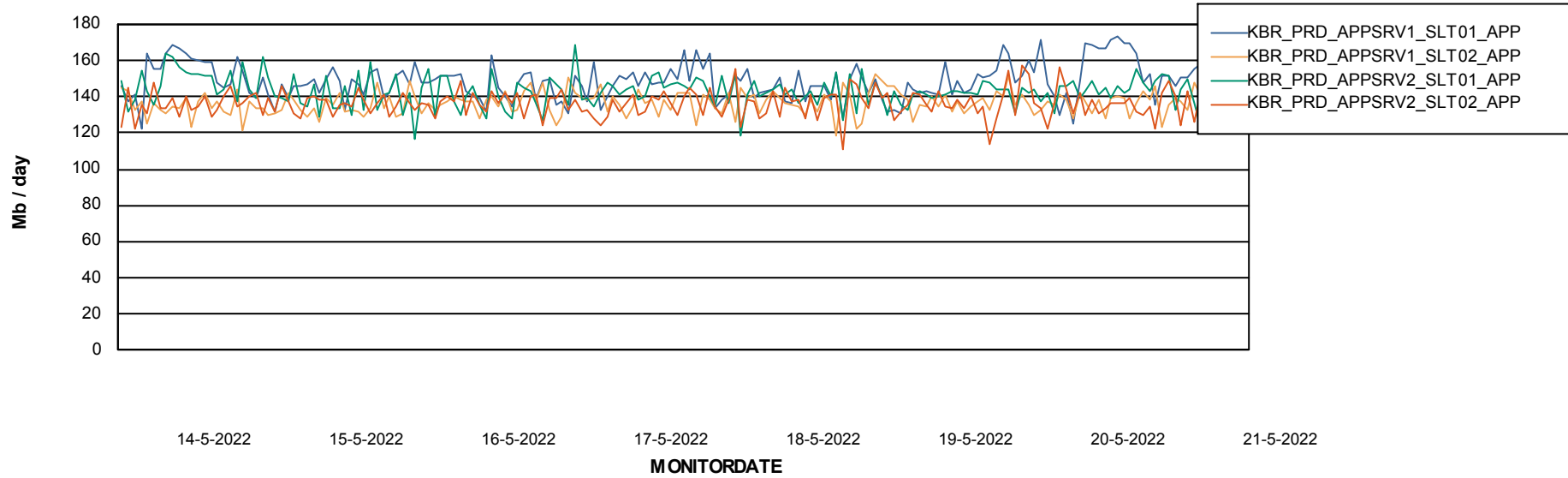
# Weekly SLA Customer Report

Customer KBR\_Production  
Database ID 117



## ABSSolute Application Server Services

### Avg memory used per ABS Server Service



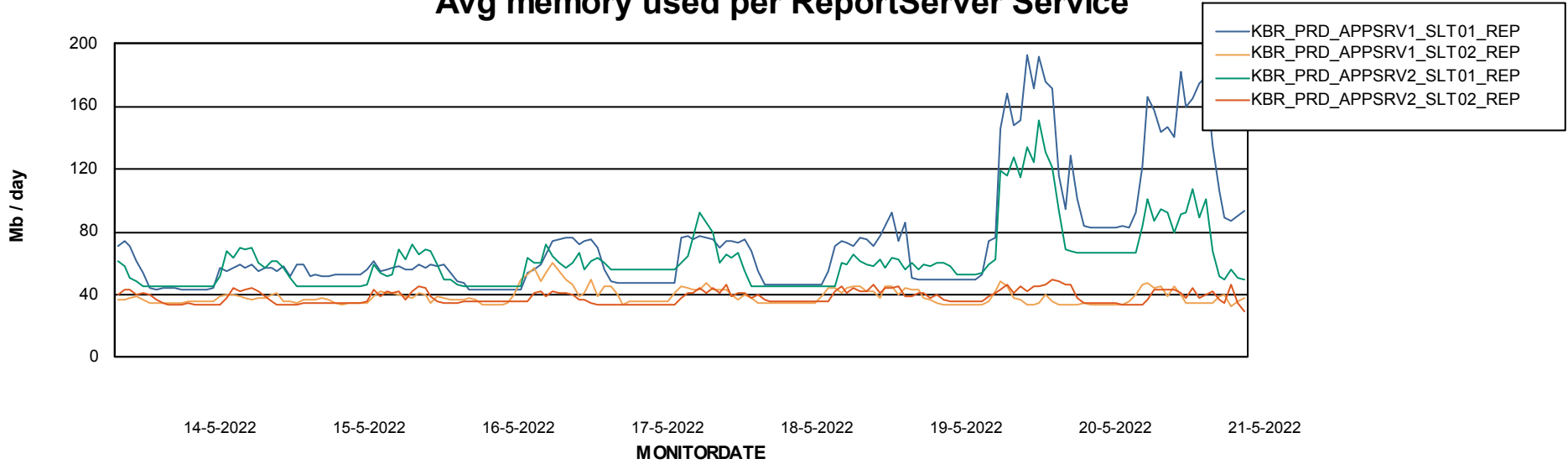
# Weekly SLA Customer Report

Customer KBR\_Production  
Database ID 117

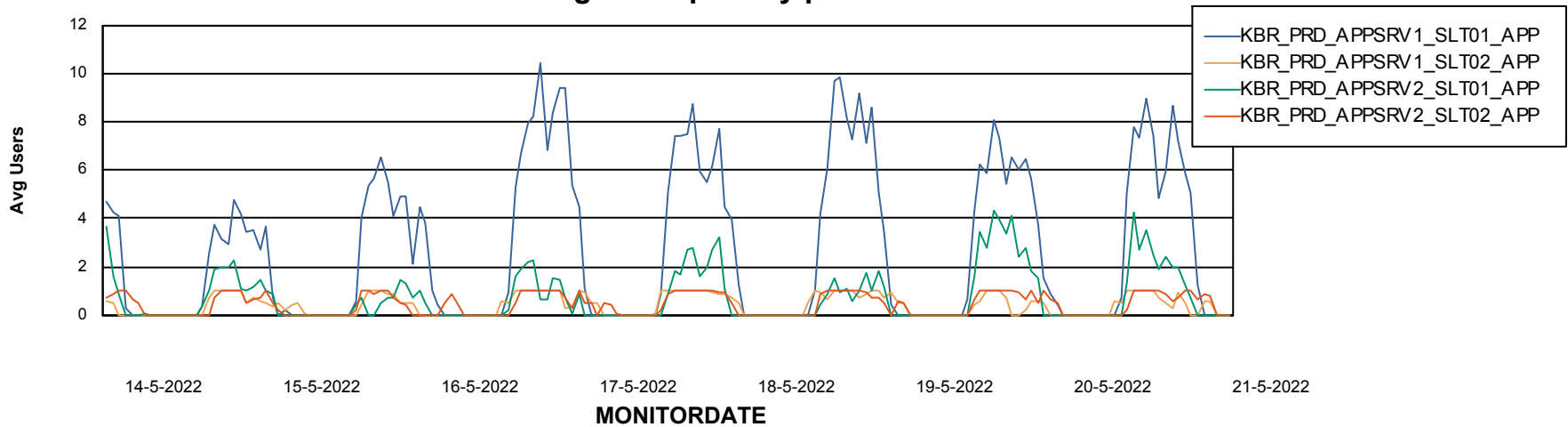


## ABSSolute Application Server Services

### Avg memory used per ReportServer Service



### Avg users per day per ABS server



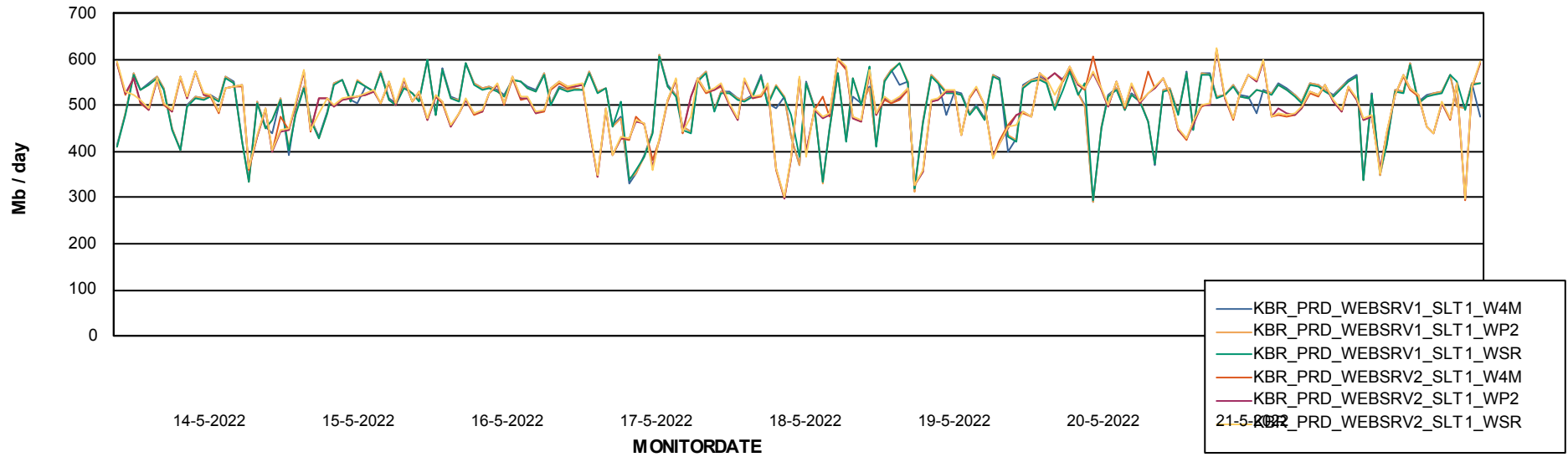
# Weekly SLA Customer Report

Customer KBR\_Production  
Database ID 117



## ABSSolute Web Component Services

### Avg memory used per ABS Web component



# Weekly SLA Customer Report

Customer KBR\_Production  
Database ID 117



## Disaster per ABS component

