

# Weekly SLA Customer Report

Customer JSG\_Production  
Database ID 102



## Harddisk Usage JSG\_PRD\_CRUSHER

	Free disk space on C: (%)	Total disk space on C: (Gb)	Used disk space on C: (Gb)
21-5-2022	36	79	51
20-5-2022	36	79	51
19-5-2022	35	79	52
18-5-2022	34	79	52
17-5-2022	34	79	52
16-5-2022	34	79	52
15-5-2022	34	79	52

## Harddisk Usage JSG\_PRD\_CYPHER

	Free disk space on C: (%)	Total disk space on C: (Gb)	Used disk space on C: (Gb)
21-5-2022	51	79	39
20-5-2022	51	79	39
19-5-2022	50	79	40
18-5-2022	49	79	40
17-5-2022	49	79	40
16-5-2022	49	79	40
15-5-2022	49	79	40

# Weekly SLA Customer Report

Customer JSG\_Production  
Database ID 102



## Harddisk Usage JSG\_PRD\_GUINAN

	Free disk space on C: (%)	Total disk space on C: (Gb)	Used disk space on C: (Gb)
21-5-2022	62	79	30
20-5-2022	62	79	30
19-5-2022	60	79	31
18-5-2022	60	79	32
17-5-2022	60	79	32
16-5-2022	60	79	32
15-5-2022	60	79	32

## Harddisk Usage JSG\_PRD\_LAFORGE

	Free disk space on C: (%)	Total disk space on C: (Gb)	Used disk space on C: (Gb)
21-5-2022	19	149	121
20-5-2022	19	149	121
19-5-2022	19	149	121
18-5-2022	19	149	121
17-5-2022	19	149	121
16-5-2022	19	149	120
15-5-2022	20	149	120

# Weekly SLA Customer Report

Customer JSG\_Production  
Database ID 102



## Harddisk Usage JSG\_PRD\_PICARD

	Free disk space on C: (%)	Total disk space on C: (Gb)	Used disk space on C: (Gb)	Free disk space on D: (%)	Total disk space on D: (Gb)	Used disk space on D: (Gb)
21-5-2022	56	149	66	30	1,024	719
20-5-2022	56	149	66	30	1,024	713
19-5-2022	56	149	66	31	1,024	710
18-5-2022	56	149	66	24	1,024	775
17-5-2022	56	149	66	19	1,024	828
16-5-2022	56	149	66	22	1,024	801
15-5-2022	56	149	66	23	1,024	788

## Harddisk Usage JSG\_PRD\_RIKER

	Free disk space on C: (%)	Total disk space on C: (Gb)	Used disk space on C: (Gb)	Free disk space on D: (%)	Total disk space on D: (Gb)	Used disk space on D: (Gb)
21-5-2022	71	199	59	59	1,024	422
20-5-2022	71	199	58	59	1,024	422
19-5-2022	71	199	58	59	1,024	420
18-5-2022	71	199	58	60	1,024	413
17-5-2022	71	199	58	61	1,024	397
16-5-2022	71	199	58	62	1,024	385
15-5-2022	71	199	58	64	1,024	369

# Weekly SLA Customer Report

Customer JSG\_Production  
Database ID 102



## Harddisk Usage JSG\_PRD\_SAREK

	Free disk space on C: (%)	Total disk space on C: (Gb)	Used disk space on C: (Gb)	Free disk space on D: (%)	Total disk space on D: (Gb)	Used disk space on D: (Gb)
21-5-2022	63	149	55	34	750	493
20-5-2022	63	149	55	34	750	497
19-5-2022	63	149	55	34	750	497
18-5-2022	63	149	55	35	750	489
17-5-2022	63	149	55	38	750	468
16-5-2022	63	149	55	40	750	451
15-5-2022	64	149	54	40	750	450

## Harddisk Usage JSG\_PRD\_TEBOK

	Free disk space on C: (%)	Total disk space on C: (Gb)	Used disk space on C: (Gb)
21-5-2022	58	79	33
20-5-2022	58	79	33
19-5-2022	57	79	34
18-5-2022	56	79	35
17-5-2022	56	79	35
16-5-2022	56	79	35
15-5-2022	56	79	35

# Weekly SLA Customer Report

Customer JSG\_Production  
Database ID 102



## Harddisk Usage JSG\_PRD\_TOMALAK

	Free disk space on C: (%)	Total disk space on C: (Gb)	Used disk space on C: (Gb)
21-5-2022	52	79	39
20-5-2022	52	79	39
19-5-2022	50	79	40
18-5-2022	50	79	40
17-5-2022	50	79	40
16-5-2022	50	79	40
15-5-2022	50	79	40

## Harddisk Usage JSG\_PRD\_TROI

	Free disk space on C: (%)	Total disk space on C: (Gb)	Used disk space on C: (Gb)
21-5-2022	41	149	89
20-5-2022	41	149	88
19-5-2022	41	149	88
18-5-2022	41	149	88
17-5-2022	41	149	88
16-5-2022	41	149	88
15-5-2022	41	149	88

# Weekly SLA Customer Report

Customer JSG\_Production  
Database ID 102



Harddisk Usage JSG\_PRD\_WORF

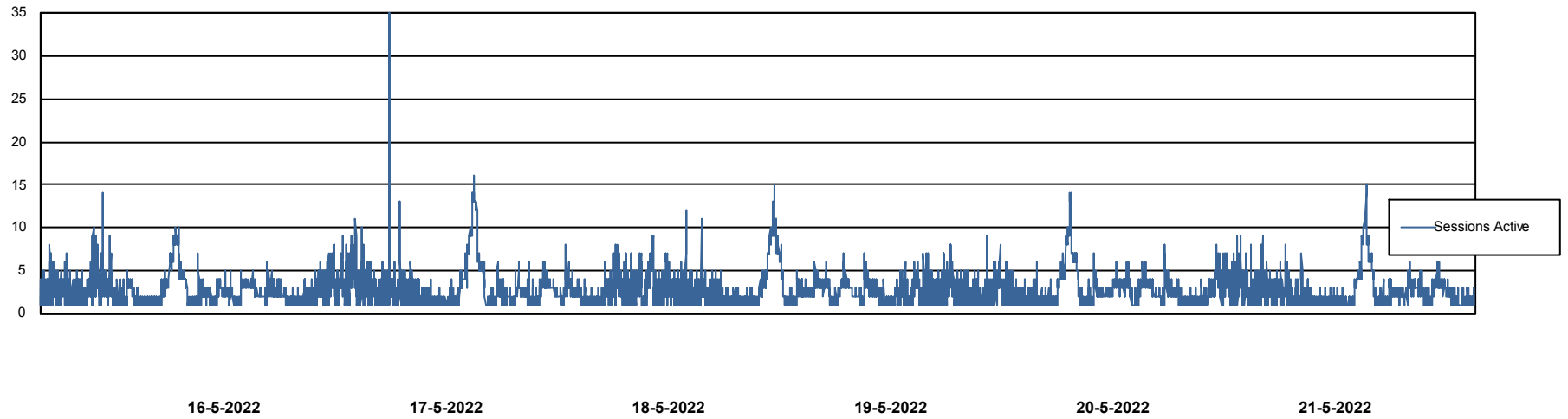
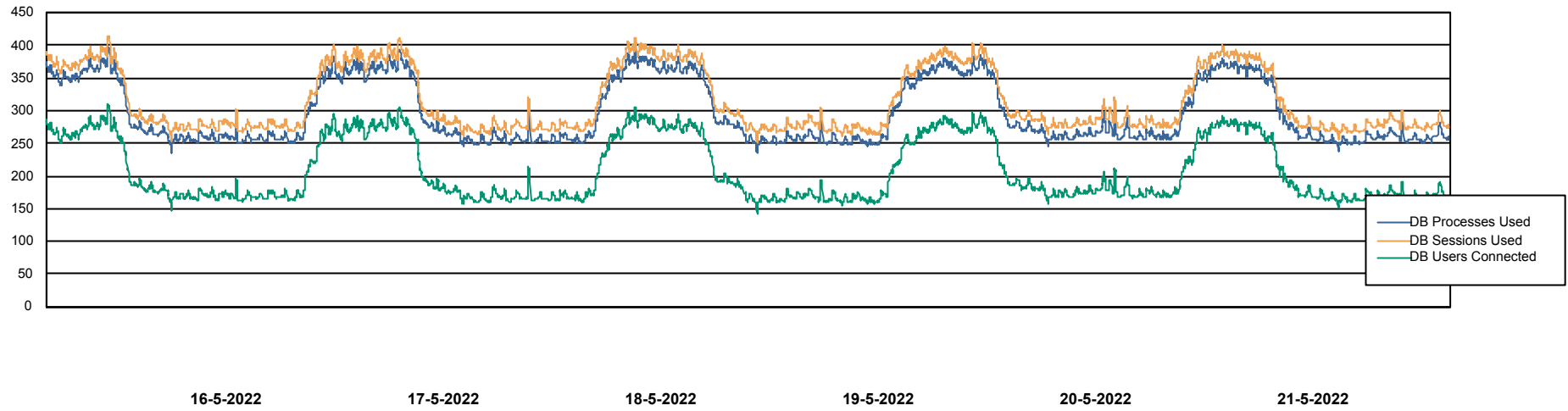
	Free disk space on C: (%)	Total disk space on C: (Gb)	Used disk space on C: (Gb)
21-5-2022	40	149	90
20-5-2022	40	149	90
19-5-2022	40	149	90
18-5-2022	40	149	90
17-5-2022	40	149	90
16-5-2022	40	149	90
15-5-2022	40	149	89

# Weekly SLA Customer Report

Customer JSG\_Production  
Database ID 102



## Database Performance JSG\_PRD\_PICARD\_DB



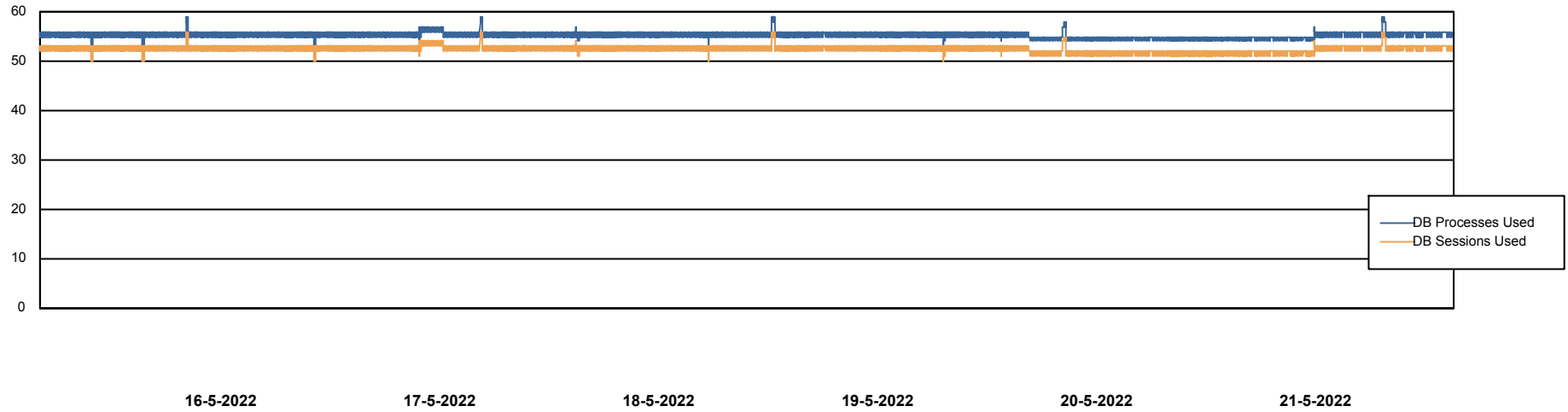
# Weekly SLA Customer Report

Customer JSG\_Production  
Database ID 102



## Database Performance JSG\_PRD\_RIKER\_DB

DB Processes Max 0  
DB Processes Max 4  
DB Processes Max 1,000

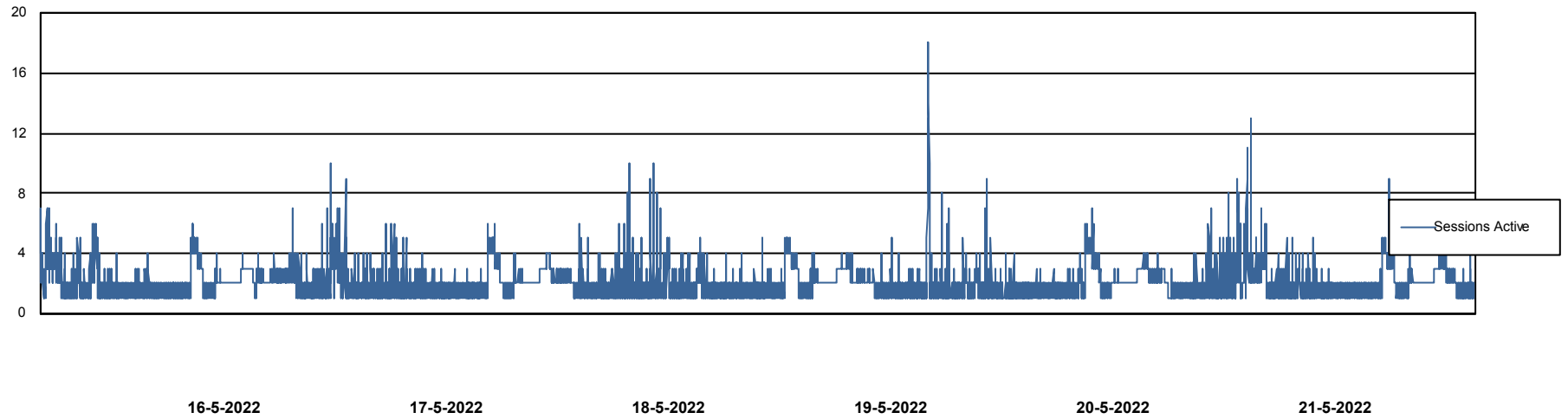
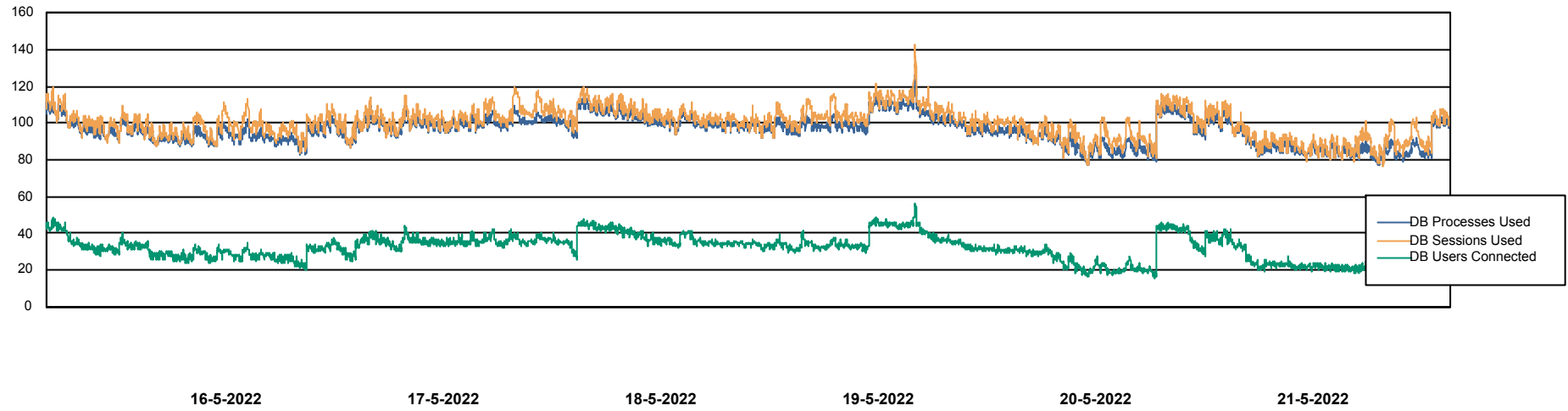


# Weekly SLA Customer Report

Customer JSG\_Production  
Database ID 102



## Database Performance JSG\_PRD\_SAREK\_DB



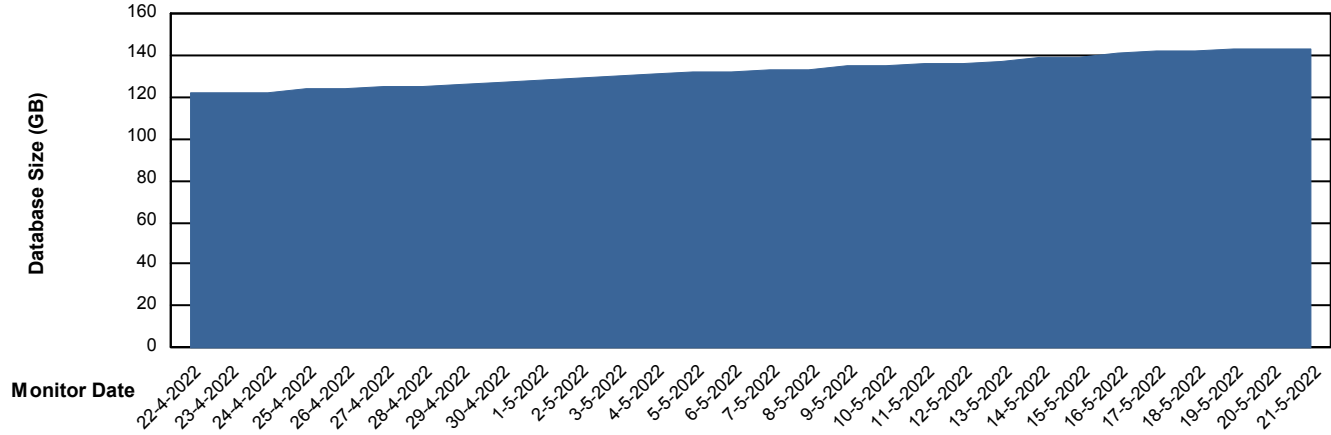
# Weekly SLA Customer Report

Customer JSG\_Production  
Database ID 102



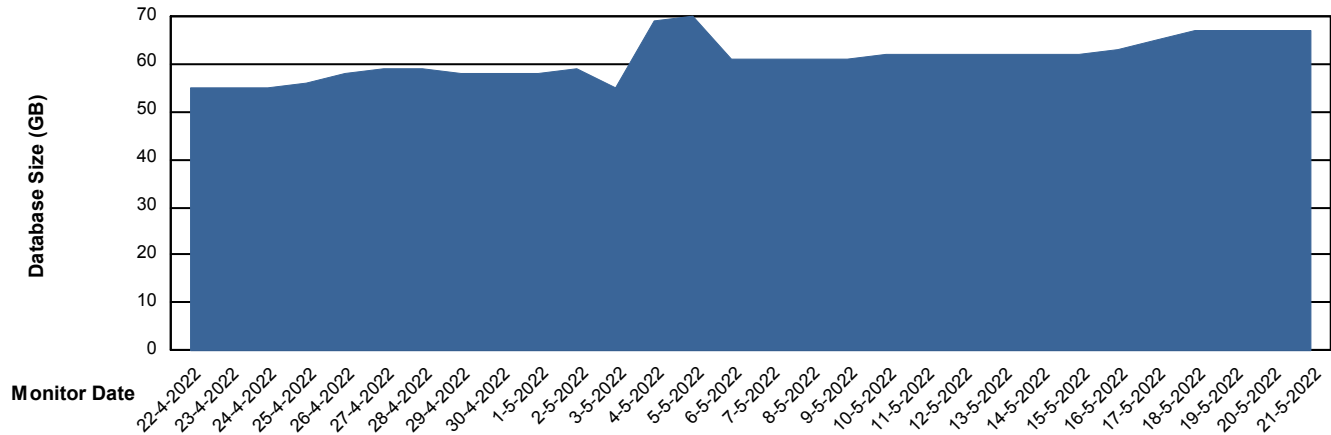
DATABASE SIZE JSG\_PRD\_PICARD\_DB

### Database growth over last month



DATABASE SIZE JSG\_PRD\_SAREK\_DB

### Database growth over last month



# Weekly SLA Customer Report

Customer JSG\_Production  
Database ID 102



## Database Tablespace JSG\_PRD\_PICARD\_DB

Date	Tablespace Name	Filesize (Gb)	Usedsize (Gb)	Percentage free
21-5-2022	ABSDATA	144	118	18
	INDX	50	6	88
20-5-2022	ABSDATA	144	118	18
	INDX	50	6	88
19-5-2022	ABSDATA	144	117	19
	INDX	50	6	88
18-5-2022	ABSDATA	144	117	19
	INDX	50	6	88
17-5-2022	ABSDATA	134	116	13
	INDX	50	6	88
16-5-2022	ABSDATA	134	116	14
	INDX	50	6	88
15-5-2022	ABSDATA	134	114	15
	INDX	50	6	89

# Weekly SLA Customer Report

Customer JSG\_Production  
 Database ID 102



Database Tablespace JSG\_PRD\_SAREK\_DB

Date	Tablespace Name	Filesize (Gb)	Usedsize (Gb)	Percentage free
21-5-2022	ABSDATA	48	40	17
	INDX	40	25	38
20-5-2022	ABSDATA	48	40	17
	INDX	40	25	38
19-5-2022	ABSDATA	48	40	17
	INDX	40	25	38
18-5-2022	ABSDATA	48	39	18
	INDX	40	25	38
17-5-2022	ABSDATA	48	38	20
	INDX	40	25	39
16-5-2022	ABSDATA	48	37	24
	INDX	40	24	40
15-5-2022	ABSDATA	48	36	25
	INDX	40	23	42

BI Status and last ETL error for JSG\_PRD\_SAREK\_DB

	ma 16/5/2022	di 17/5/2022	wo 18/5/2022	do 19/5/2022	vr 20/5/2022	za 21/5/2022
<b>ABS DataWarehouse ETL Health</b>	OK	OK	OK	OK	OK	OK
<b>ABS DWHStaging ETL Health</b>	OK	OK	OK	OK	OK	OK

## Weekly SLA Customer Report

Customer JSG\_Production  
Database ID 102



BI last ETL error for	JSG_PRD_SAREK_DB
ma, 16-05-2022	None
za, 21-05-2022	None
do, 19-05-2022	None
di, 17-05-2022	None
wo, 18-05-2022	None
vr, 20-05-2022	None
ma, 16-05-2022	None
di, 17-05-2022	None
za, 21-05-2022	None
zo, 15-05-2022	None
do, 19-05-2022	None
wo, 18-05-2022	None
ma, 16-05-2022	ORA-00054: resource busy and acquire with NOWAIT specified or timeout expired
zo, 15-05-2022	None
vr, 20-05-2022	None



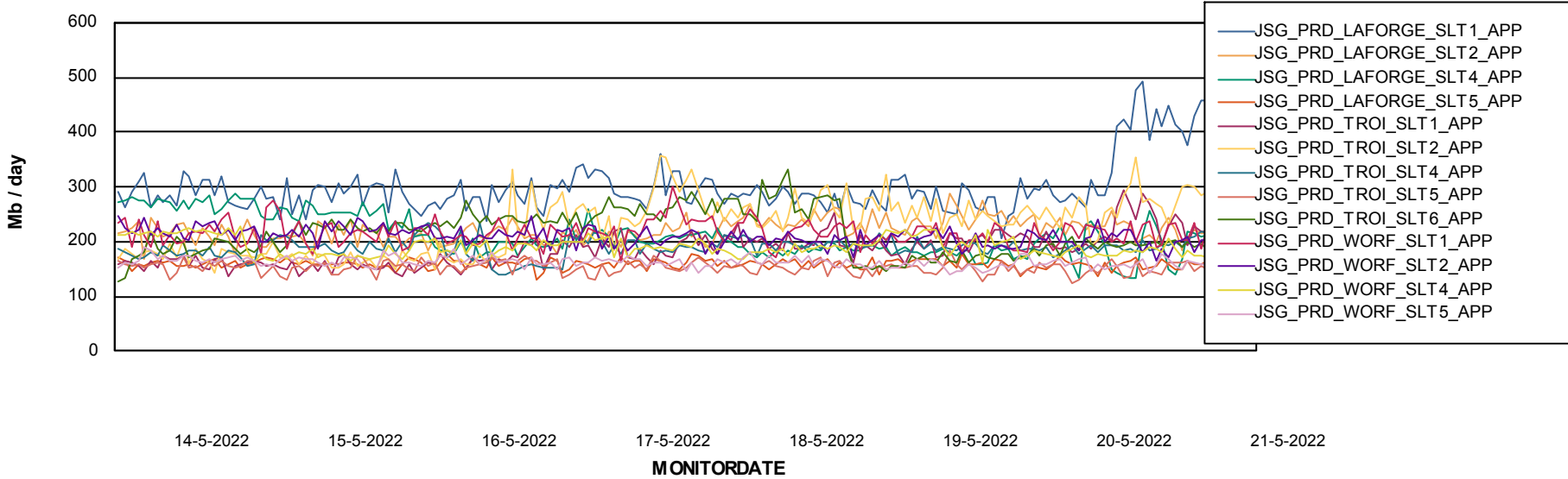
# Weekly SLA Customer Report

Customer JSG\_Production  
Database ID 102

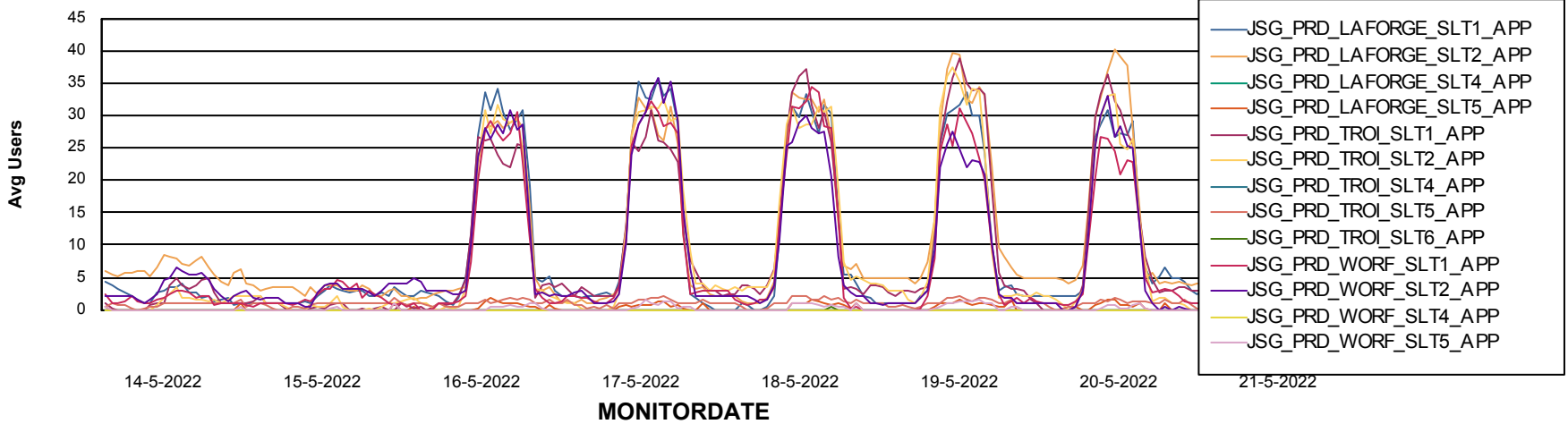


## ABSSolute Application Server Services

### Avg memory used per ABS Server Service



### Avg users per day per ABS server



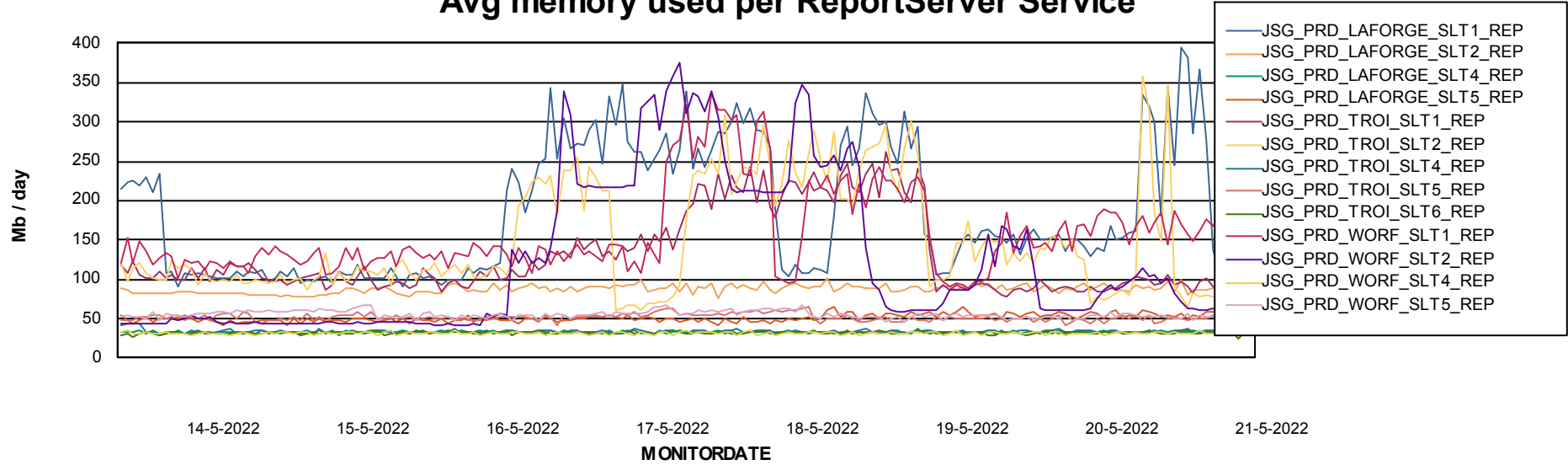
# Weekly SLA Customer Report

Customer JSG\_Production  
Database ID 102



## ABSSolute Application ReportServer Services

### Avg memory used per ReportServer Service



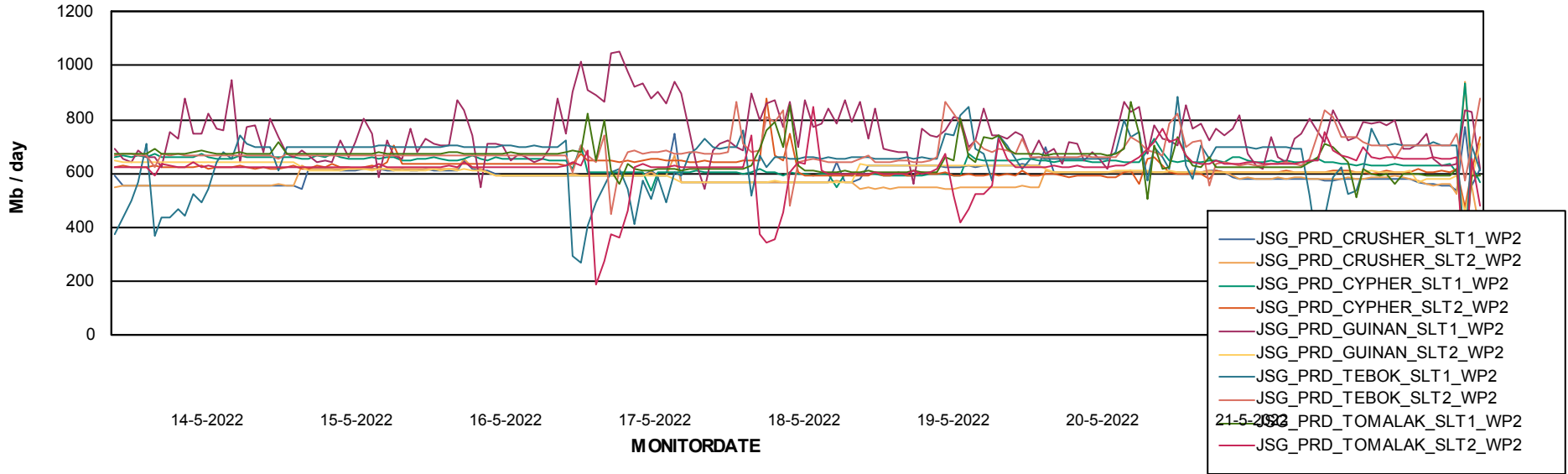
# Weekly SLA Customer Report

Customer JSG\_Production  
Database ID 102



## ABSSolute Web Component Services

### Avg memory used per ABS Web component



# Weekly SLA Customer Report

Customer JSG\_Production  
Database ID 102



## Disaster per ABS component

