

Weekly SLA Customer Report

Customer KBR_Production
Database ID 117



Harddisk Usage BI-DBSRV

	Free disk space on C: (%)	Total disk space on C: (Gb)	Used disk space on C: (Gb)	Free disk space on D: (%)	Total disk space on D: (Gb)	Used disk space on D: (Gb)	Free disk space on E: (%)	Total disk space on E: (Gb)	Used disk space on E: (Gb)
14-5-2022	32	100	68	91	500	43	62	310	118
13-5-2022	32	100	68	91	500	43	62	310	118
12-5-2022	31	100	68	91	500	43	62	310	119
11-5-2022	31	100	69	91	500	43	61	310	120
10-5-2022	30	100	69	91	500	43	61	310	120
9-5-2022	30	100	69	91	500	43	62	310	118
8-5-2022	30	100	70	91	500	43	61	310	120

Harddisk Usage KBR_PRD_APPSRV1

	Free disk space on C: (%)	Total disk space on C: (Gb)	Used disk space on C: (Gb)
14-5-2022	47	149	80
13-5-2022	47	149	80
12-5-2022	47	149	80
11-5-2022	48	149	78
10-5-2022	48	149	78
9-5-2022	48	149	78
8-5-2022	48	149	78

Weekly SLA Customer Report

Customer KBR_Production
Database ID 117



Harddisk Usage KBR_PRD_APPSRV2

	Free disk space on C: (%)	Total disk space on C: (Gb)	Used disk space on C: (Gb)
14-5-2022	24	99	76
13-5-2022	24	99	76
12-5-2022	23	99	76
11-5-2022	26	99	74
10-5-2022	26	99	73
9-5-2022	26	99	73
8-5-2022	26	99	73

Harddisk Usage KBR_PRD_DB-SRV1

	Free disk space on C: (%)	Total disk space on C: (Gb)	Used disk space on C: (Gb)	Free disk space on D: (%)	Total disk space on D: (Gb)	Used disk space on D: (Gb)	Free disk space on E: (%)	Total disk space on E: (Gb)	Used disk space on E: (Gb)
14-5-2022	40	99	60	96	800	34	89	400	46
13-5-2022	40	99	60	96	800	34	89	400	45
12-5-2022	39	99	60	96	800	34	89	400	45
11-5-2022	41	99	59	96	800	34	89	400	44
10-5-2022	41	99	58	96	800	34	89	400	43
9-5-2022	41	99	58	96	800	34	89	400	44
8-5-2022	41	99	58	96	800	34	89	400	44

Weekly SLA Customer Report

Customer KBR_Production
Database ID 117



Harddisk Usage KBR_PRD_WEBSRV1

	Free disk space on / (%)	Total disk space on / (Gb)	Used disk space on / (Gb)	Free disk space on /boot (%)	Total disk space on /boot (Gb)	Used disk space on /boot (Gb)
14-5-2022	79	55	11	60	1	0
13-5-2022	80	55	11	60	1	0
12-5-2022	80	55	11	60	1	0
11-5-2022	80	55	11	60	1	0
10-5-2022	80	55	11	60	1	0
9-5-2022	80	55	11	60	1	0
8-5-2022	80	55	11	60	1	0

Harddisk Usage KBR_PRD_WEBSRV2

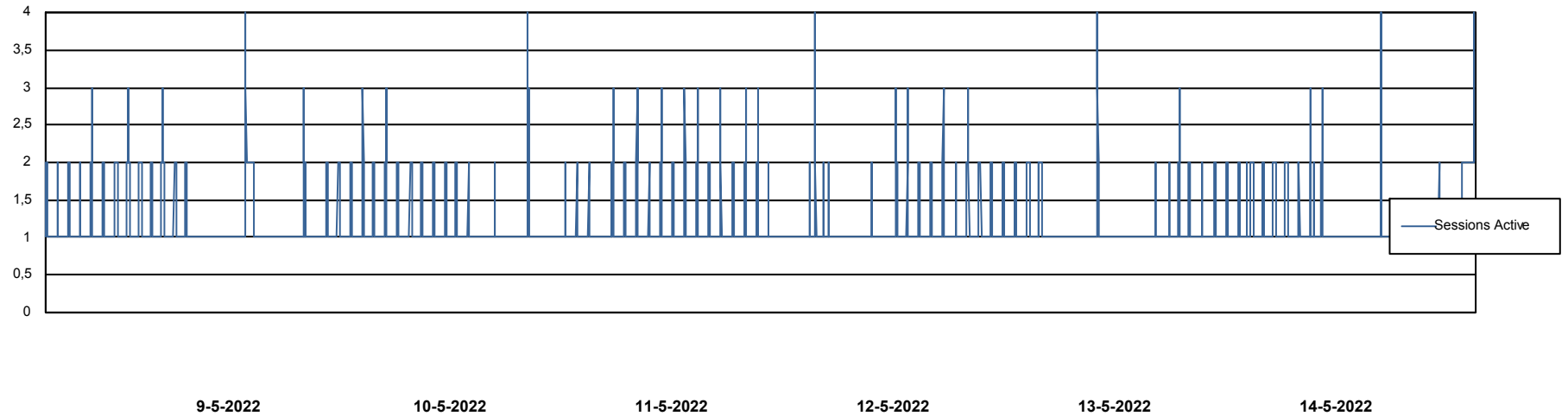
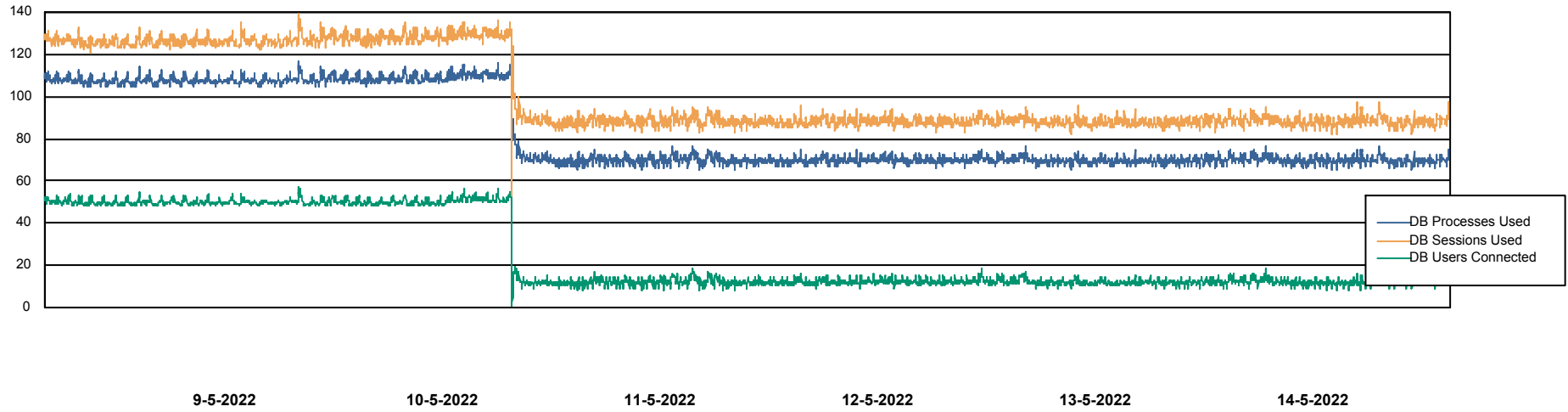
	Free disk space on / (%)	Total disk space on / (Gb)	Used disk space on / (Gb)	Free disk space on /boot (%)	Total disk space on /boot (Gb)	Used disk space on /boot (Gb)
14-5-2022	82	55	10	62	1	0
13-5-2022	82	55	10	62	1	0
12-5-2022	82	55	10	62	1	0
11-5-2022	82	55	10	62	1	0
10-5-2022	82	55	10	62	1	0
9-5-2022	83	55	10	62	1	0
8-5-2022	83	55	10	62	1	0

Weekly SLA Customer Report

Customer KBR_Production
Database ID 117



Database Performance BI-DBSRV_DB

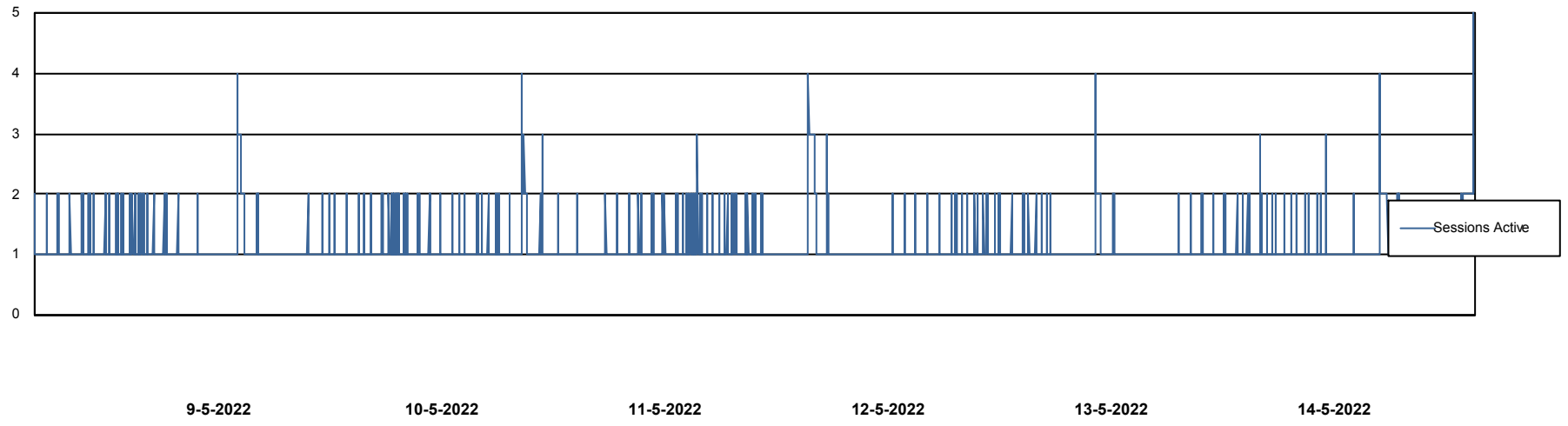
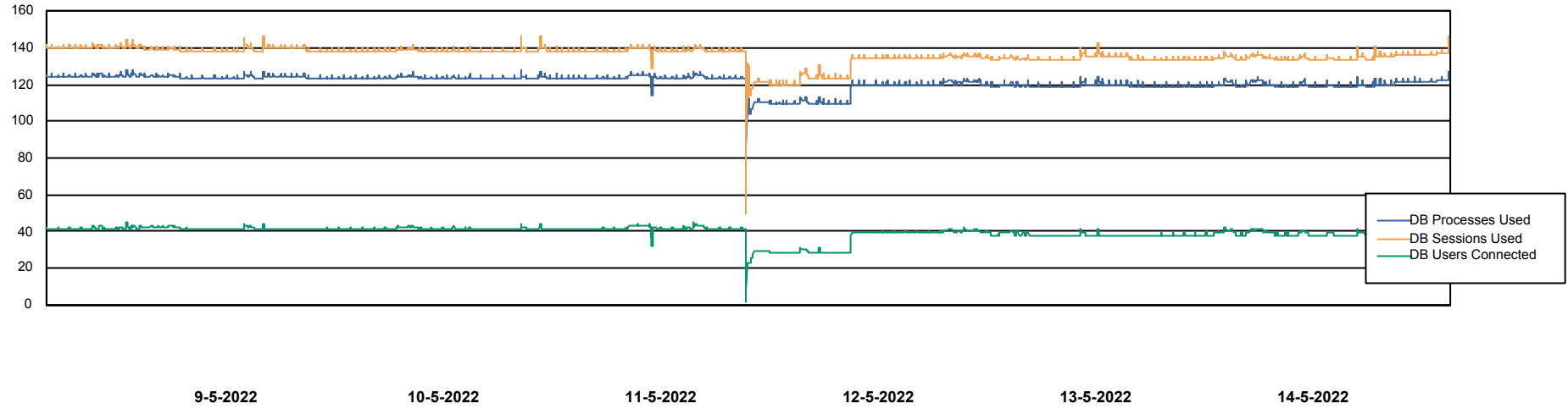


Weekly SLA Customer Report

Customer KBR_Production
Database ID 117



Database Performance KBR_PRD_DB-SRV1_DB



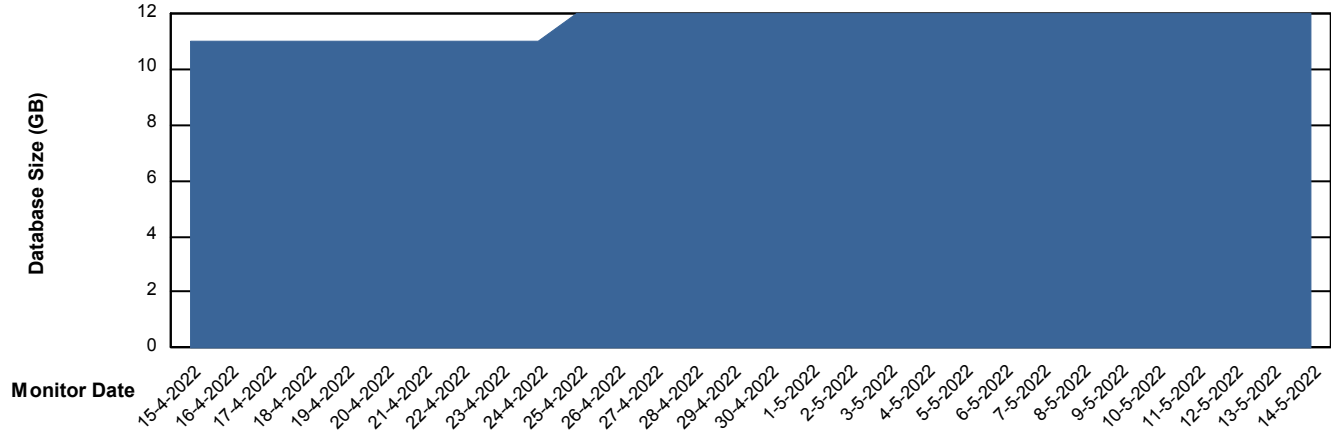
Weekly SLA Customer Report

Customer KBR_Production
Database ID 117



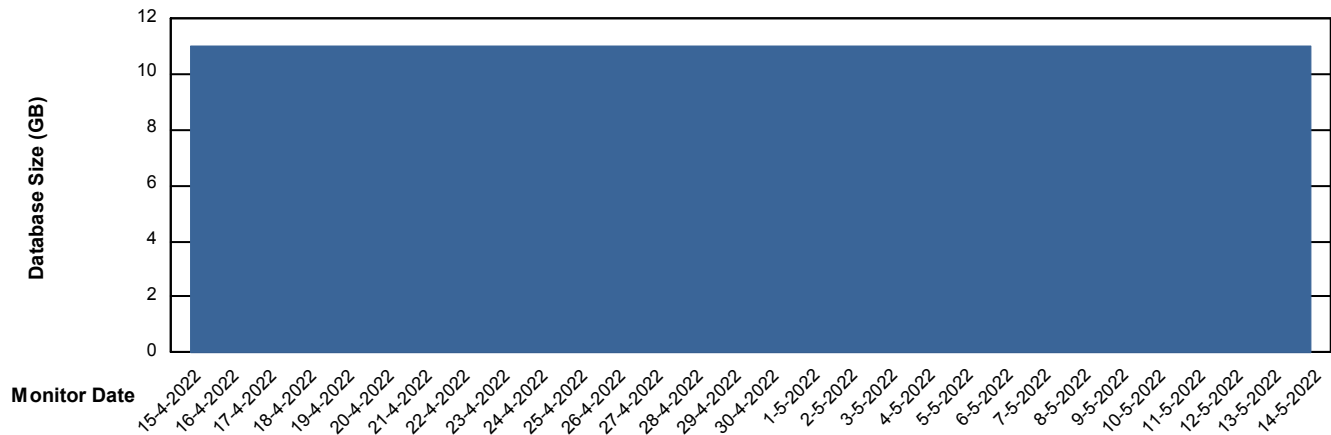
DATABASE SIZE BI-DBSRV_DB

Database growth over last month



DATABASE SIZE KBR_PRD_DB-SRV1_DB

Database growth over last month



Weekly SLA Customer Report

Customer KBR_Production
 Database ID 117



Database Tablespace BI-DBSRV_DB

Date	Tablespace Name	Filesize (Gb)	Usedsize (Gb)	Percentage free
14-5-2022	ABSDATA	6	4	28
	INDX	8	5	41
13-5-2022	ABSDATA	6	4	28
	INDX	8	5	41
12-5-2022	ABSDATA	6	4	28
	INDX	8	5	41
11-5-2022	ABSDATA	6	4	28
	INDX	8	5	41
10-5-2022	ABSDATA	6	4	28
	INDX	8	5	41
9-5-2022	ABSDATA	6	4	28
	INDX	8	5	41
8-5-2022	ABSDATA	6	4	29
	INDX	8	5	42

Weekly SLA Customer Report

Customer KBR_Production
 Database ID 117



Database Tablespace KBR_PRD_DB-SRV1_DB

Date	Tablespace Name	Filesize (Gb)	Usedsize (Gb)	Percentage free
14-5-2022	ABSDATA	8	4	51
	INDX	8	1	88
13-5-2022	ABSDATA	8	4	51
	INDX	8	1	88
12-5-2022	ABSDATA	8	4	51
	INDX	8	1	88
11-5-2022	ABSDATA	8	4	51
	INDX	8	1	88
10-5-2022	ABSDATA	8	4	52
	INDX	8	1	88
9-5-2022	ABSDATA	8	4	52
	INDX	8	1	88
8-5-2022	ABSDATA	8	4	52
	INDX	8	1	89

BI Status and last ETL error for BI-DBSRV_DB

	ma 9/5/2022	di 10/5/2022	wo 11/5/2022	do 12/5/2022	vr 13/5/2022	za 14/5/2022
ABS DataWarehouse ETL Health	OK	OK	OK	OK	OK	OK
ABS DWHStaging ETL Health	OK	OK	OK	OK	OK	OK

Weekly SLA Customer Report

Customer KBR_Production
 Database ID 117



BI last ETL error for	BI-DBSRV_DB
di, 10-05-2022	None
do, 12-05-2022	None
ma, 9-05-2022	None
za, 14-05-2022	None
zo, 8-05-2022	ORA-03135: connection lost contact
di, 10-05-2022	None
zo, 8-05-2022	None
do, 12-05-2022	None
wo, 11-05-2022	None
vr, 13-05-2022	None
zo, 8-05-2022	None
vr, 13-05-2022	None
wo, 11-05-2022	None
zo, 8-05-2022	ORA-00054: resource busy and acquire with NOWAIT specified or timeout expired
za, 14-05-2022	None
ma, 9-05-2022	None

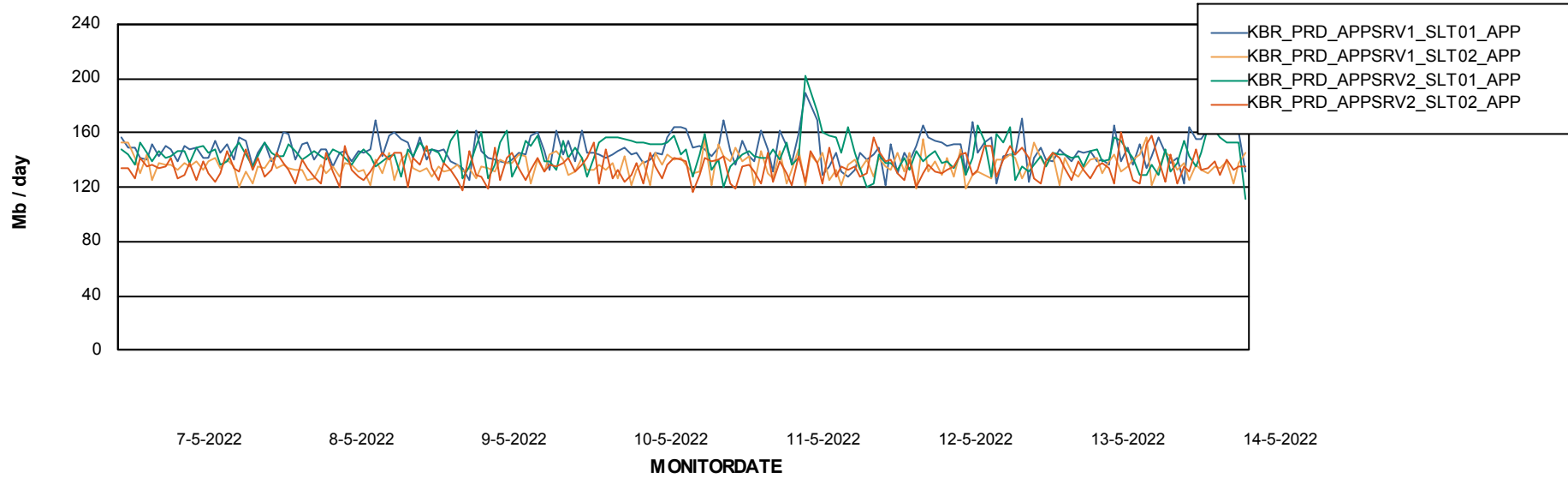
Weekly SLA Customer Report

Customer KBR_Production
Database ID 117



ABSSolute Application Server Services

Avg memory used per ABS Server Service



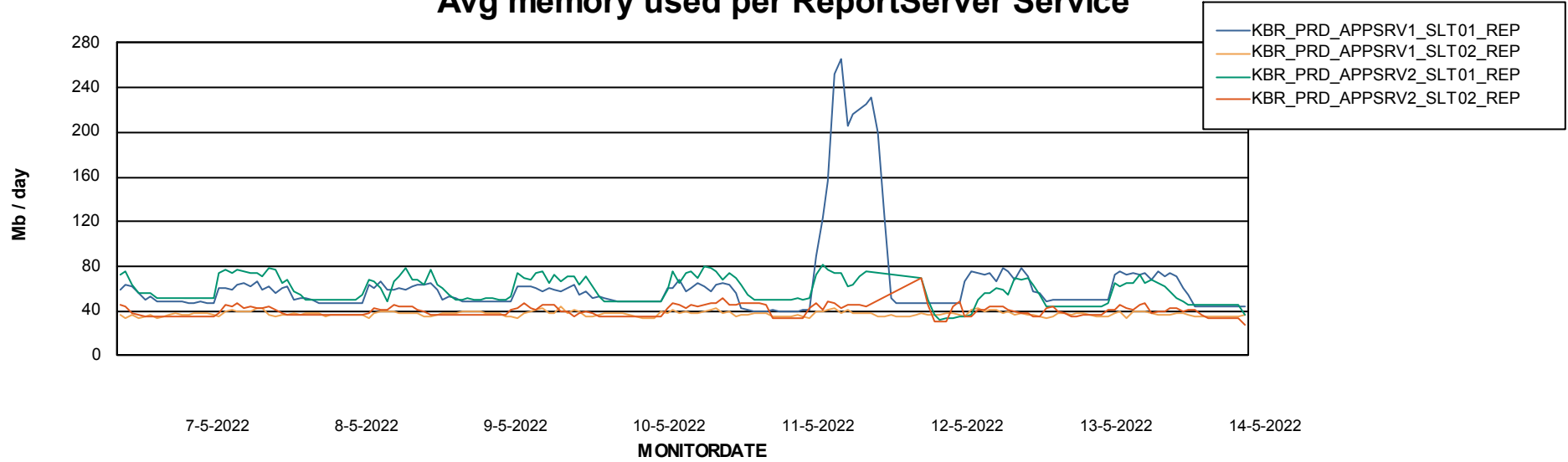
Weekly SLA Customer Report

Customer KBR_Production
Database ID 117

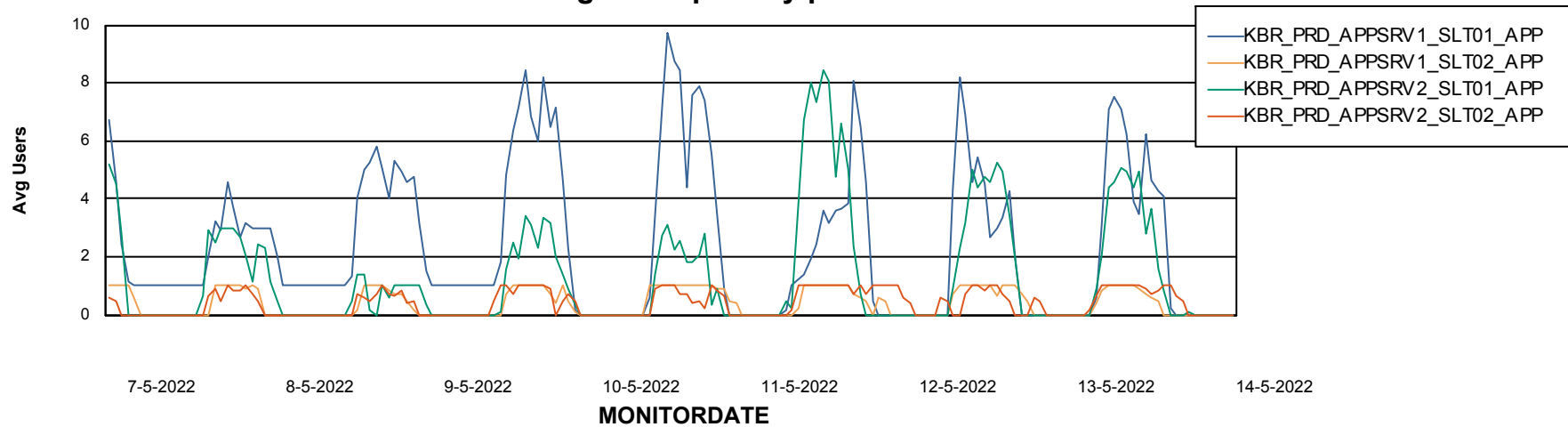


ABSolute Application Server Services

Avg memory used per ReportServer Service



Avg users per day per ABS server



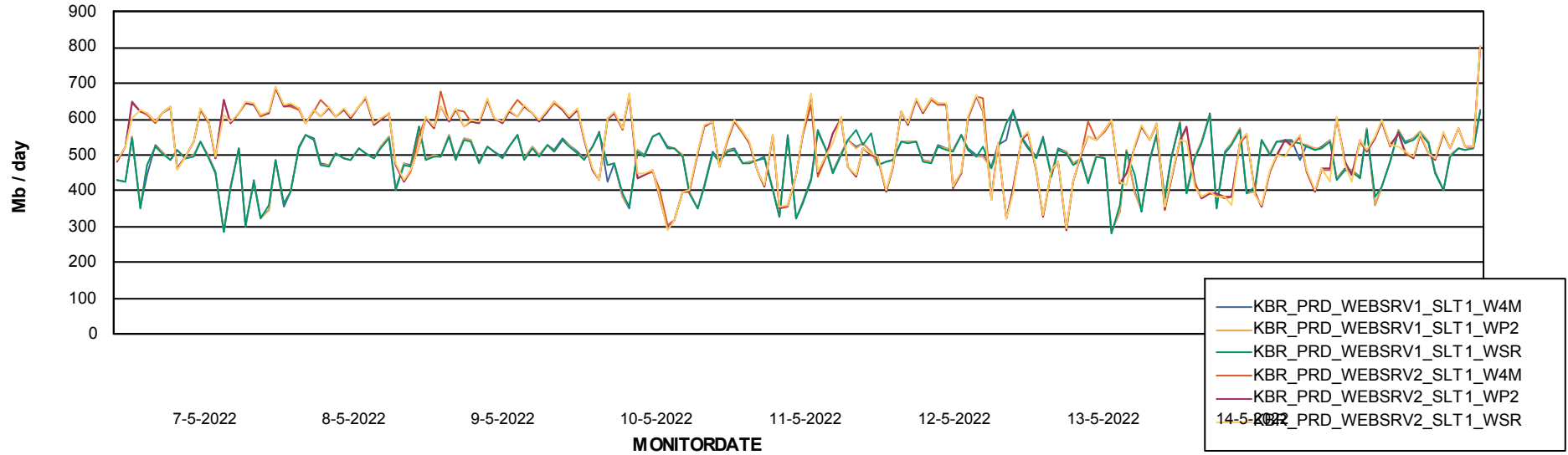
Weekly SLA Customer Report

Customer KBR_Production
Database ID 117



ABSSolute Web Component Services

Avg memory used per ABS Web component



Weekly SLA Customer Report

Customer KBR_Production
Database ID 117



Disaster per ABS component

