

Weekly SLA Customer Report

Customer JSG_Production
Database ID 102



Harddisk Usage JSG_PRD_CRUSHER

	Free disk space on C: (%)	Total disk space on C: (Gb)	Used disk space on C: (Gb)
23-4-2022	39	79	49
22-4-2022	39	79	49
21-4-2022	39	79	49
20-4-2022	39	79	49
19-4-2022	39	79	49
18-4-2022	38	79	50
17-4-2022	36	79	51

Harddisk Usage JSG_PRD_CYPHER

	Free disk space on C: (%)	Total disk space on C: (Gb)	Used disk space on C: (Gb)
23-4-2022	55	79	36
22-4-2022	55	79	36
21-4-2022	55	79	36
20-4-2022	57	79	34
19-4-2022	57	79	34
18-4-2022	54	79	37
17-4-2022	53	79	37

Weekly SLA Customer Report

Customer JSG_Production
Database ID 102



Harddisk Usage JSG_PRD_GUINAN

	Free disk space on C: (%)	Total disk space on C: (Gb)	Used disk space on C: (Gb)
23-4-2022	59	79	33
22-4-2022	59	79	33
21-4-2022	59	79	33
20-4-2022	59	79	32
19-4-2022	59	79	32
18-4-2022	58	79	33
17-4-2022	56	79	35

Harddisk Usage JSG_PRD_LAFORGE

	Free disk space on C: (%)	Total disk space on C: (Gb)	Used disk space on C: (Gb)
23-4-2022	18	149	123
22-4-2022	18	149	123
21-4-2022	20	149	120
20-4-2022	23	149	116
19-4-2022	23	149	116
18-4-2022	23	149	115
17-4-2022	23	149	115

Weekly SLA Customer Report

Customer JSG_Production
 Database ID 102



Harddisk Usage JSG_PRD_PICARD

	Free disk space on C: (%)	Total disk space on C: (Gb)	Used disk space on C: (Gb)	Free disk space on D: (%)	Total disk space on D: (Gb)	Used disk space on D: (Gb)
23-4-2022	57	149	65	24	1,024	777
22-4-2022	57	149	65	26	1,024	756
21-4-2022	57	149	64	27	1,024	747
20-4-2022	57	149	64	29	1,024	727
19-4-2022	57	149	64	30	1,024	717
18-4-2022	57	149	64	32	1,024	693
17-4-2022	57	149	64	33	1,024	681

Harddisk Usage JSG_PRD_RIKER

	Free disk space on C: (%)	Total disk space on C: (Gb)	Used disk space on C: (Gb)	Free disk space on D: (%)	Total disk space on D: (Gb)	Used disk space on D: (Gb)
23-4-2022	71	199	58	15	1,024	865
22-4-2022	71	199	58	16	1,024	858
21-4-2022	71	199	58	17	1,024	848
20-4-2022	71	199	58	18	1,024	838
19-4-2022	71	199	58	20	1,024	823
18-4-2022	71	199	58	21	1,024	810
17-4-2022	71	199	58	23	1,024	793

Weekly SLA Customer Report

Customer JSG_Production
Database ID 102



Harddisk Usage JSG_PRD_SAREK

	Free disk space on C: (%)	Total disk space on C: (Gb)	Used disk space on C: (Gb)	Free disk space on D: (%)	Total disk space on D: (Gb)	Used disk space on D: (Gb)
23-4-2022	66	149	50	50	750	376
22-4-2022	66	149	51	49	750	383
21-4-2022	66	149	51	49	750	380
20-4-2022	66	149	51	50	750	373
19-4-2022	66	149	51	51	750	367
18-4-2022	66	149	51	52	750	363
17-4-2022	66	149	51	51	750	365

Harddisk Usage JSG_PRD_TEBOK

	Free disk space on C: (%)	Total disk space on C: (Gb)	Used disk space on C: (Gb)
23-4-2022	60	79	32
22-4-2022	60	79	32
21-4-2022	60	79	32
20-4-2022	60	79	32
19-4-2022	60	79	32
18-4-2022	59	79	33
17-4-2022	57	79	34

Weekly SLA Customer Report

Customer JSG_Production
Database ID 102



Harddisk Usage JSG_PRD_TOMALAK

	Free disk space on C: (%)	Total disk space on C: (Gb)	Used disk space on C: (Gb)
23-4-2022	50	79	40
22-4-2022	50	79	40
21-4-2022	50	79	40
20-4-2022	50	79	40
19-4-2022	50	79	40
18-4-2022	49	79	41
17-4-2022	46	79	43

Harddisk Usage JSG_PRD_TROI

	Free disk space on C: (%)	Total disk space on C: (Gb)	Used disk space on C: (Gb)
23-4-2022	43	149	86
22-4-2022	42	149	86
21-4-2022	43	149	85
20-4-2022	43	149	85
19-4-2022	43	149	84
18-4-2022	44	149	83
17-4-2022	44	149	83

Weekly SLA Customer Report

Customer JSG_Production
Database ID 102



Harddisk Usage JSG_PRD_WORF

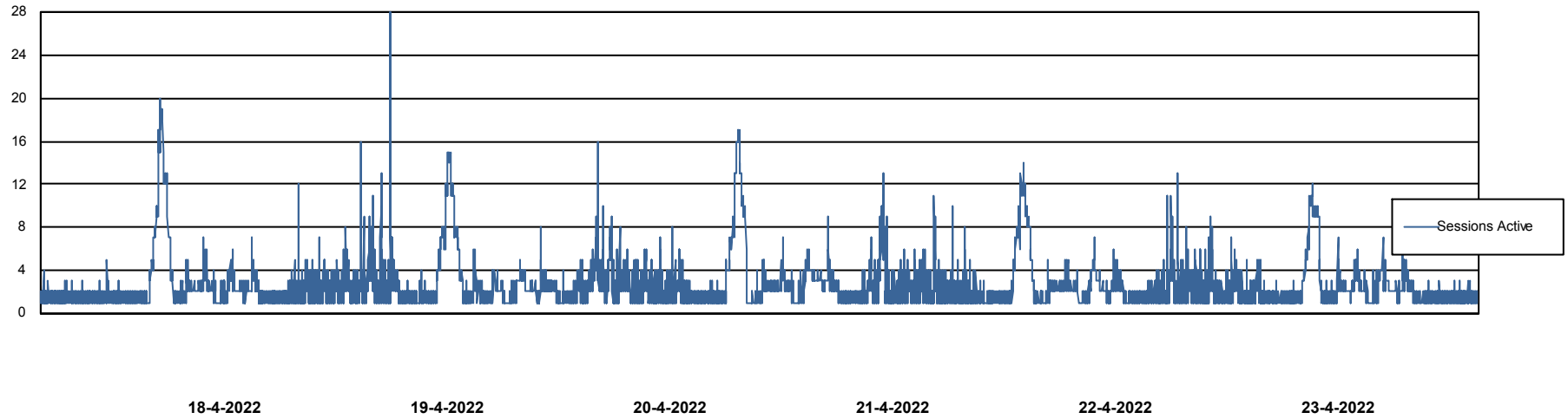
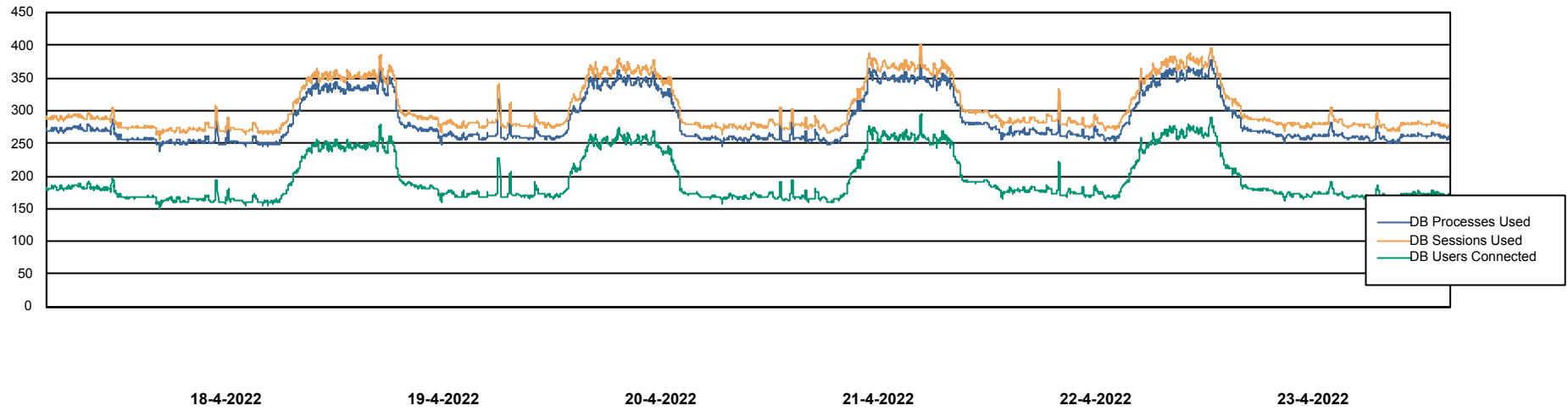
	Free disk space on C: (%)	Total disk space on C: (Gb)	Used disk space on C: (Gb)
23-4-2022	42	149	87
22-4-2022	42	149	87
21-4-2022	42	149	87
20-4-2022	42	149	87
19-4-2022	42	149	86
18-4-2022	43	149	86
17-4-2022	43	149	86

Weekly SLA Customer Report

Customer JSG_Production
Database ID 102



Database Performance JSG_PRD_PICARD_DB



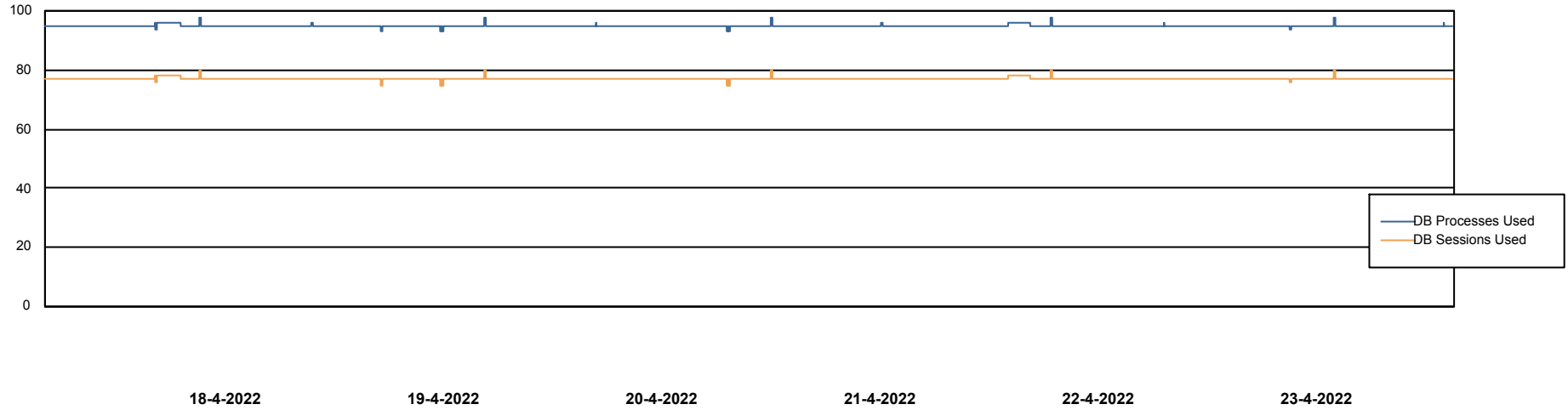
Weekly SLA Customer Report

Customer JSG_Production
Database ID 102



Database Performance JSG_PRD_RIKER_DB

DB Processes Max 0
DB Processes Max 4
DB Processes Max 1,000

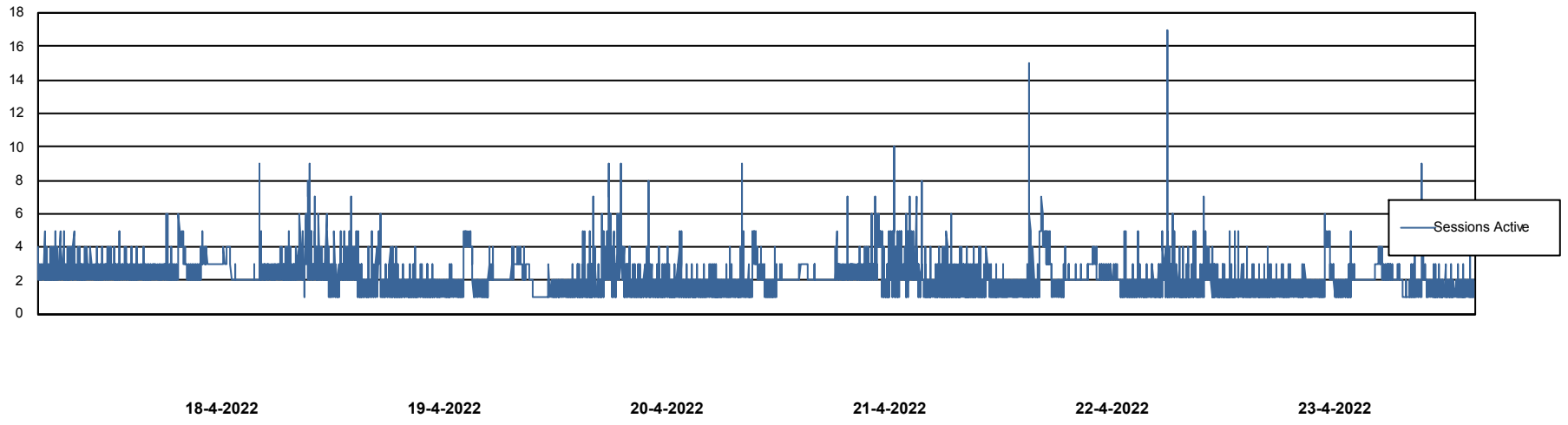
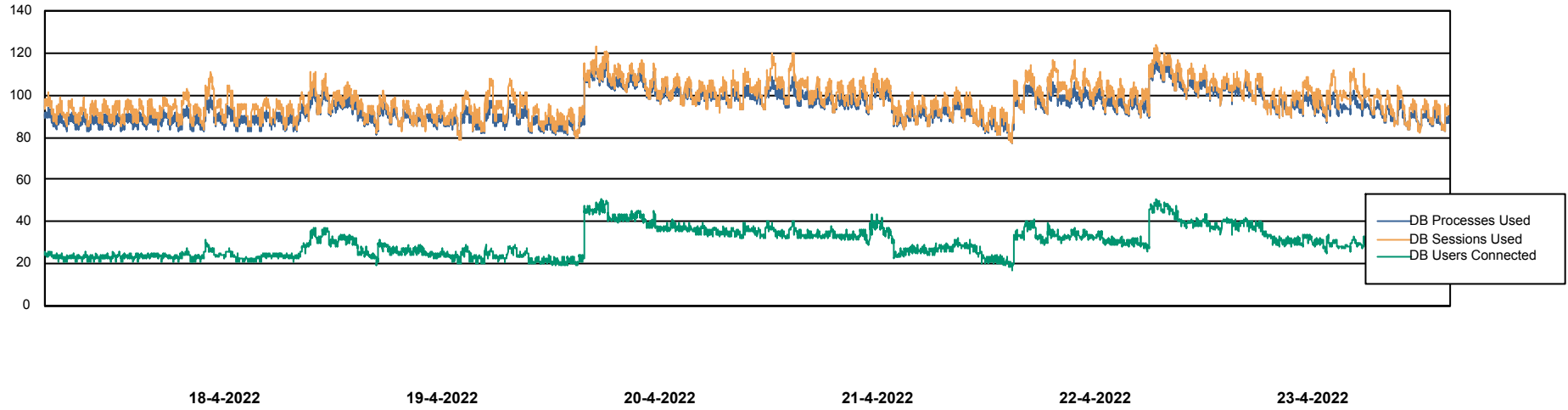


Weekly SLA Customer Report

Customer JSG_Production
Database ID 102



Database Performance JSG_PRD_SAREK_DB



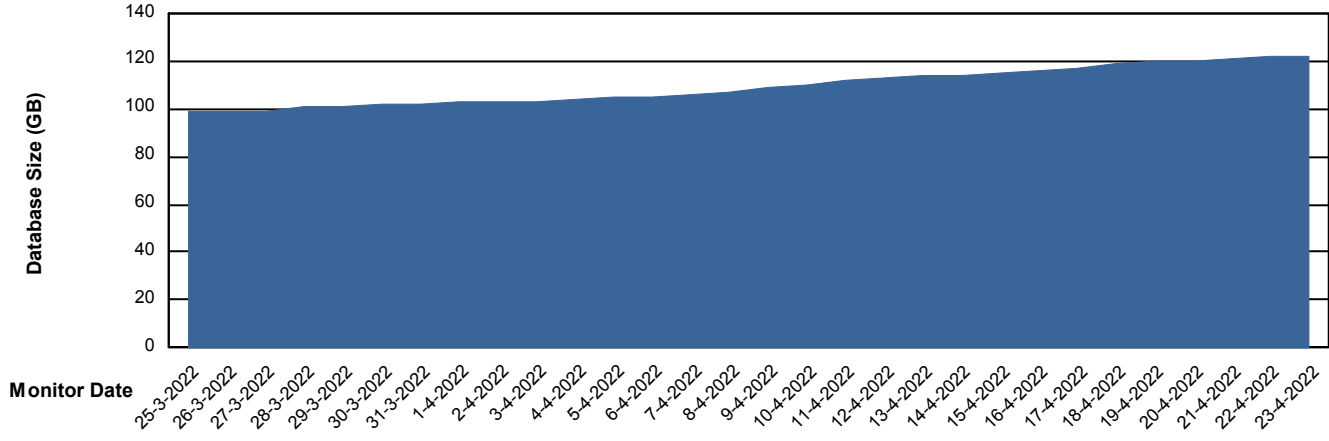
Weekly SLA Customer Report

Customer JSG_Production
Database ID 102



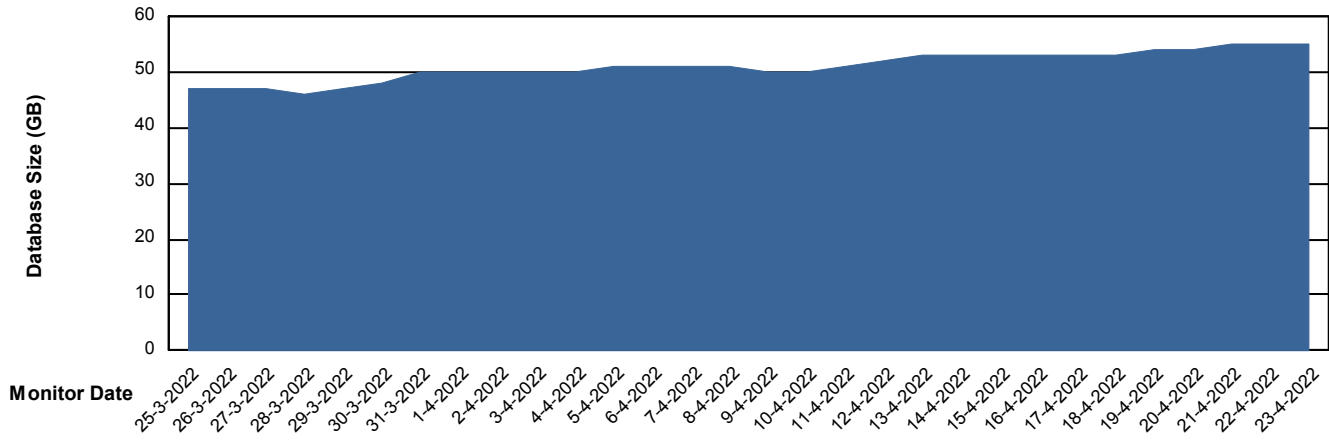
DATABASE SIZE JSG_PRD_PICARD_DB

Database growth over last month



DATABASE SIZE JSG_PRD_SAREK_DB

Database growth over last month



Weekly SLA Customer Report

Customer JSG_Production
Database ID 102



Database Tablespace JSG_PRD_PICARD_DB

Date	Tablespace Name	Filesize (Gb)	Usedsize (Gb)	Percentage free
23-4-2022	ABSDATA	108	97	10
	INDX	40	5	87
22-4-2022	ABSDATA	108	97	10
	INDX	40	5	87
21-4-2022	ABSDATA	108	96	11
	INDX	40	5	87
20-4-2022	ABSDATA	108	96	11
	INDX	40	5	88
19-4-2022	ABSDATA	108	95	12
	INDX	40	5	88
18-4-2022	ABSDATA	108	94	13
	INDX	40	5	88
17-4-2022	ABSDATA	108	92	14
	INDX	40	5	88

Weekly SLA Customer Report

Customer JSG_Production
 Database ID 102



Database Tablespace JSG_PRD_SAREK_DB

Date	Tablespace Name	Filesize (Gb)	Usedsize (Gb)	Percentage free
23-4-2022	ABSDATA	40	32	19
	INDX	40	21	48
22-4-2022	ABSDATA	40	32	19
	INDX	40	20	49
21-4-2022	ABSDATA	40	32	19
	INDX	40	20	50
20-4-2022	ABSDATA	40	32	20
	INDX	40	20	50
19-4-2022	ABSDATA	40	31	22
	INDX	40	20	50
18-4-2022	ABSDATA	40	31	22
	INDX	40	19	52
17-4-2022	ABSDATA	40	31	22
	INDX	40	19	52

BI Status and last ETL error for JSG_PRD_SAREK_DB

	ma 18/4/2022	di 19/4/2022	wo 20/4/2022	do 21/4/2022	vr 22/4/2022	za 23/4/2022
ABS DataWarehouse ETL Health	Not OK	Not OK	OK	OK	OK	OK
ABS DWHStaging ETL Health	Not OK	Not OK	OK	OK	OK	OK

Weekly SLA Customer Report

Customer JSG_Production
Database ID 102



BI last ETL error for	JSG_PRD_SAREK_DB
zo, 17-04-2022	None
ma, 18-04-2022	ORA-00054: resource busy and acquire with NOWAIT specified or timeout expired
ma, 18-04-2022	None
di, 19-04-2022	ORA-00054: resource busy and acquire with NOWAIT specified or timeout expired
zo, 17-04-2022	None
do, 21-04-2022	None
za, 23-04-2022	None
vr, 22-04-2022	None
ma, 18-04-2022	None
di, 19-04-2022	None
wo, 20-04-2022	None
za, 23-04-2022	None
wo, 20-04-2022	None
vr, 22-04-2022	None
zo, 17-04-2022	ORA-00054: resource busy and acquire with NOWAIT specified or timeout expired
di, 19-04-2022	None
do, 21-04-2022	None

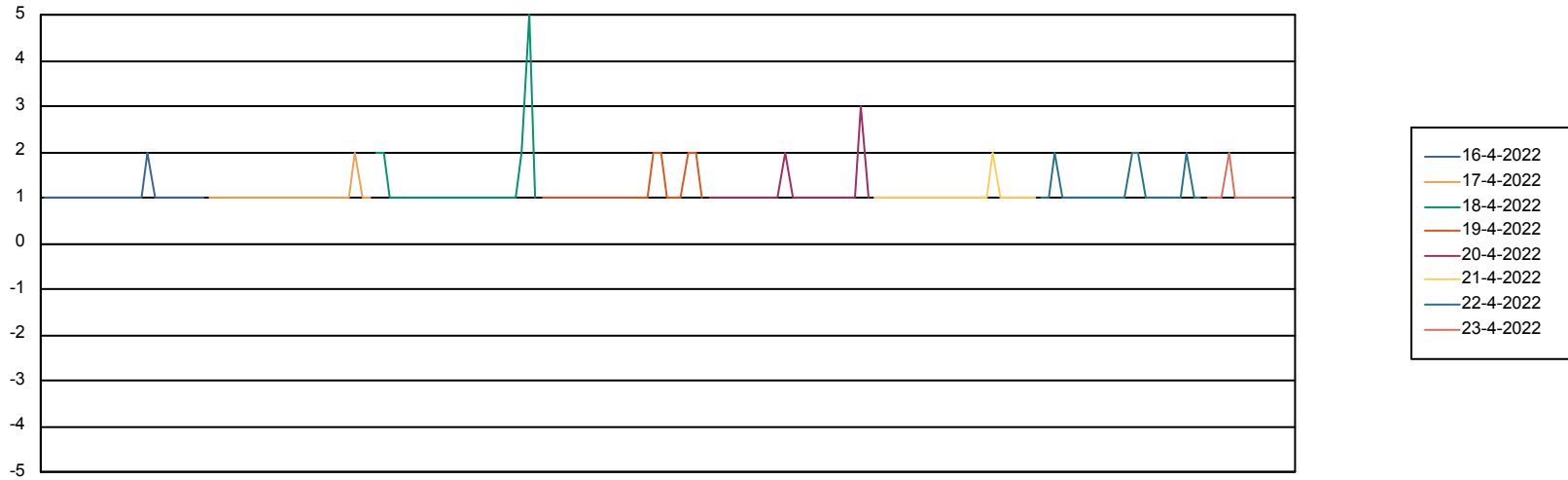
Weekly SLA Customer Report

Customer JSG_Production
Database ID 102



Standby Database Health JSG_Production

Recovery lag for last 7 days



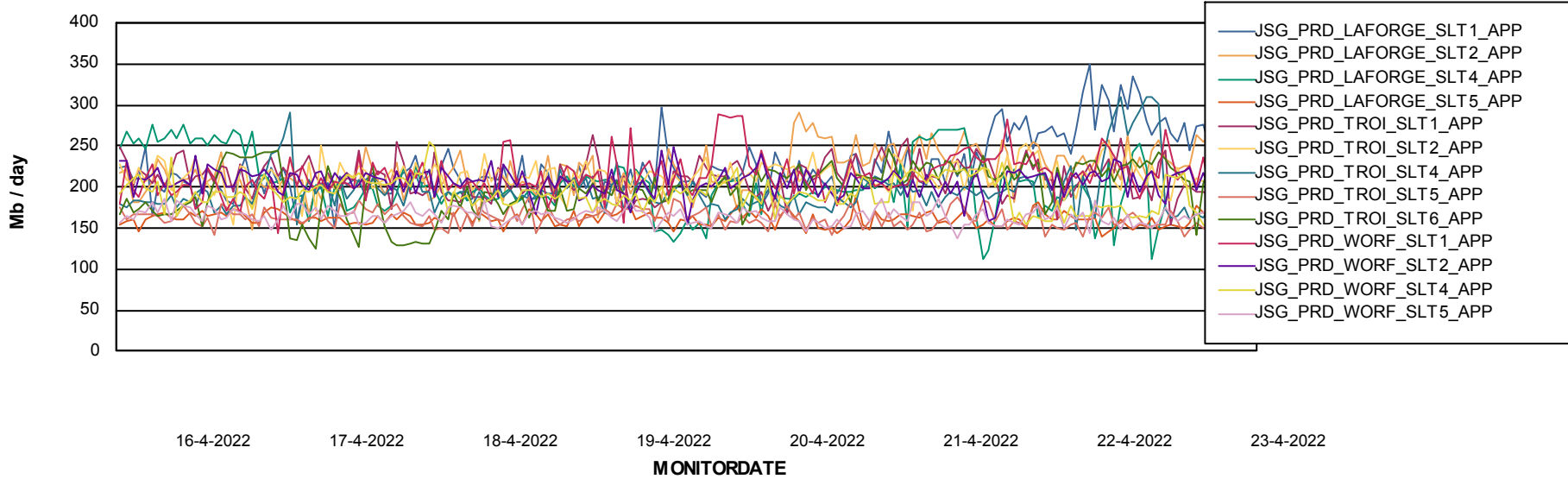
Weekly SLA Customer Report

Customer JSG_Production
Database ID 102

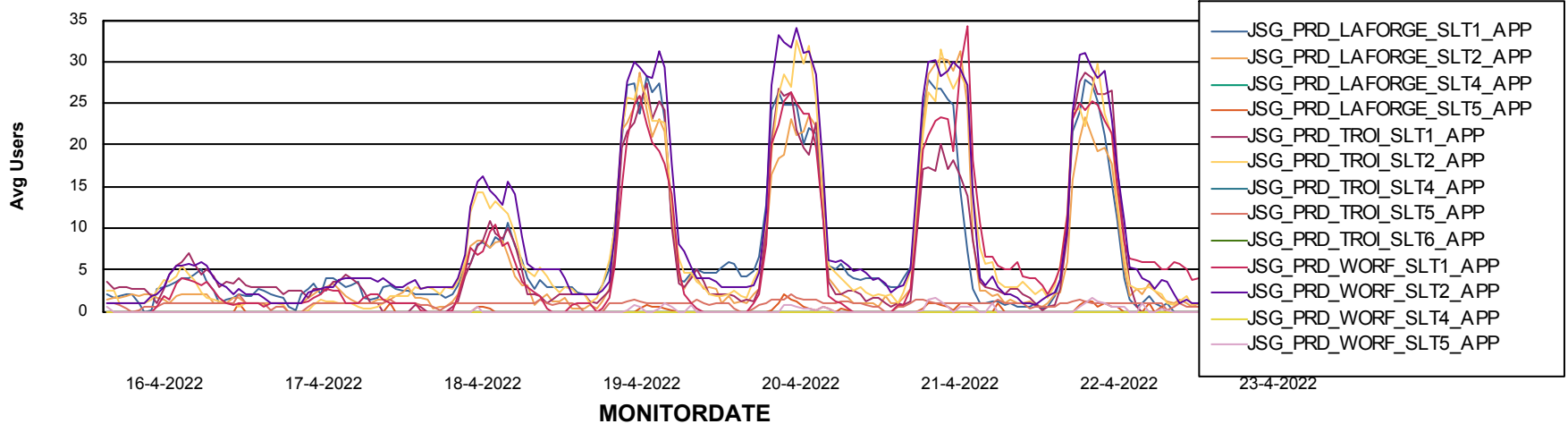


ABSSolute Application Server Services

Avg memory used per ABS Server Service



Avg users per day per ABS server



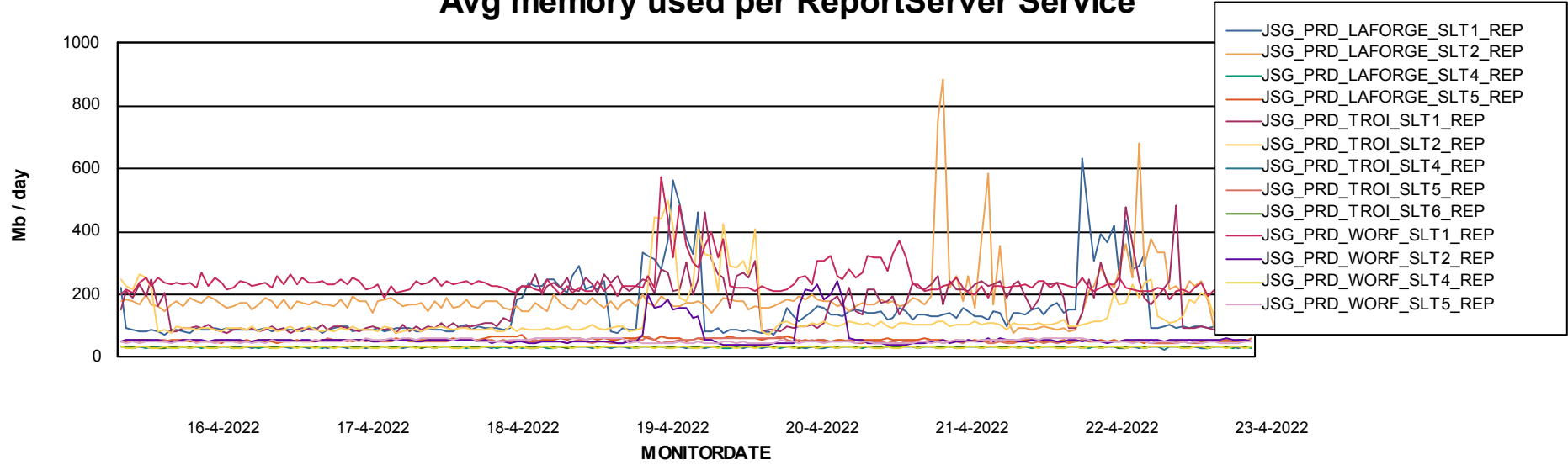
Weekly SLA Customer Report

Customer JSG_Production
Database ID 102



ABSSolute Application ReportServer Services

Avg memory used per ReportServer Service



Weekly SLA Customer Report

Customer JSG_Production
Database ID 102



ABSSolute Web Component Services

Avg memory used per ABS Web component

