

Weekly SLA Customer Report

Customer JSG_Production
Database ID 102



Harddisk Usage JSG_PRD_CRUSHER

	Free disk space on C: (%)	Total disk space on C: (Gb)	Used disk space on C: (Gb)
16-4-2022	35	79	52
15-4-2022	38	79	49
14-4-2022	40	79	48
13-4-2022	40	79	48
12-4-2022	40	79	48
11-4-2022	40	79	48
10-4-2022	40	79	48

Harddisk Usage JSG_PRD_CYPHER

	Free disk space on C: (%)	Total disk space on C: (Gb)	Used disk space on C: (Gb)
16-4-2022	53	79	37
15-4-2022	54	79	36
14-4-2022	55	79	36
13-4-2022	57	79	34
12-4-2022	58	79	33
11-4-2022	58	79	33
10-4-2022	58	79	33

Weekly SLA Customer Report

Customer JSG_Production
Database ID 102



Harddisk Usage JSG_PRD_GUINAN

	Free disk space on C: (%)	Total disk space on C: (Gb)	Used disk space on C: (Gb)
16-4-2022	56	79	35
15-4-2022	59	79	33
14-4-2022	60	79	32
13-4-2022	60	79	32
12-4-2022	60	79	32
11-4-2022	60	79	32
10-4-2022	60	79	32

Harddisk Usage JSG_PRD_LAFORGE

	Free disk space on C: (%)	Total disk space on C: (Gb)	Used disk space on C: (Gb)
16-4-2022	23	149	115
15-4-2022	23	149	115
14-4-2022	23	149	115
13-4-2022	23	149	115
12-4-2022	23	149	115
11-4-2022	23	149	115
10-4-2022	23	149	115

Weekly SLA Customer Report

Customer JSG_Production
Database ID 102



Harddisk Usage JSG_PRD_PICARD

	Free disk space on C: (%)	Total disk space on C: (Gb)	Used disk space on C: (Gb)	Free disk space on D: (%)	Total disk space on D: (Gb)	Used disk space on D: (Gb)
16-4-2022	57	149	64	35	1,024	666
15-4-2022	57	149	64	36	1,024	654
14-4-2022	57	149	64	38	1,024	636
13-4-2022	57	149	64	38	1,024	634
12-4-2022	57	149	64	38	1,024	635
11-4-2022	57	149	64	38	1,024	632
10-4-2022	57	149	64	39	1,024	622

Harddisk Usage JSG_PRD_RIKER

	Free disk space on C: (%)	Total disk space on C: (Gb)	Used disk space on C: (Gb)	Free disk space on D: (%)	Total disk space on D: (Gb)	Used disk space on D: (Gb)
16-4-2022	71	199	58	23	1,024	787
15-4-2022	71	199	58	24	1,024	778
14-4-2022	71	199	58	25	1,024	766
13-4-2022	71	199	58	26	1,024	754
12-4-2022	71	199	58	28	1,024	742
11-4-2022	71	199	58	30	1,024	720
10-4-2022	71	199	58	32	1,024	692

Weekly SLA Customer Report

Customer JSG_Production
Database ID 102



Harddisk Usage JSG_PRD_SAREK

	Free disk space on C: (%)	Total disk space on C: (Gb)	Used disk space on C: (Gb)	Free disk space on D: (%)	Total disk space on D: (Gb)	Used disk space on D: (Gb)
16-4-2022	66	149	52	52	750	358
15-4-2022	66	149	51	51	750	366
14-4-2022	66	149	51	51	750	368
13-4-2022	66	149	51	51	750	365
12-4-2022	66	149	51	52	750	363
11-4-2022	66	149	51	52	750	359
10-4-2022	66	149	51	52	750	361

Harddisk Usage JSG_PRD_TEBOK

	Free disk space on C: (%)	Total disk space on C: (Gb)	Used disk space on C: (Gb)
16-4-2022	55	79	35
15-4-2022	61	79	31
14-4-2022	63	79	30
13-4-2022	63	79	29
12-4-2022	63	79	29
11-4-2022	63	79	29
10-4-2022	63	79	29

Weekly SLA Customer Report

Customer JSG_Production
Database ID 102



Harddisk Usage JSG_PRD_TOMALAK

	Free disk space on C: (%)	Total disk space on C: (Gb)	Used disk space on C: (Gb)
16-4-2022	45	79	44
15-4-2022	51	79	39
14-4-2022	52	79	38
13-4-2022	52	79	38
12-4-2022	52	79	38
11-4-2022	52	79	38
10-4-2022	52	79	38

Harddisk Usage JSG_PRD_TROI

	Free disk space on C: (%)	Total disk space on C: (Gb)	Used disk space on C: (Gb)
16-4-2022	44	149	83
15-4-2022	44	149	83
14-4-2022	44	149	83
13-4-2022	45	149	83
12-4-2022	45	149	83
11-4-2022	45	149	82
10-4-2022	45	149	82

Weekly SLA Customer Report

Customer JSG_Production
Database ID 102



Harddisk Usage JSG_PRD_WORF

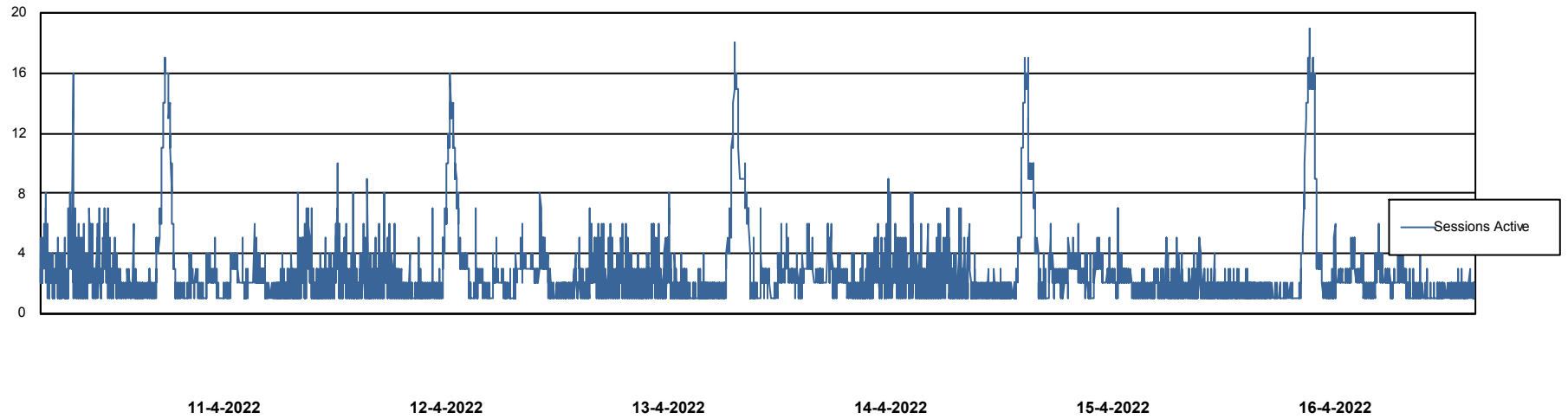
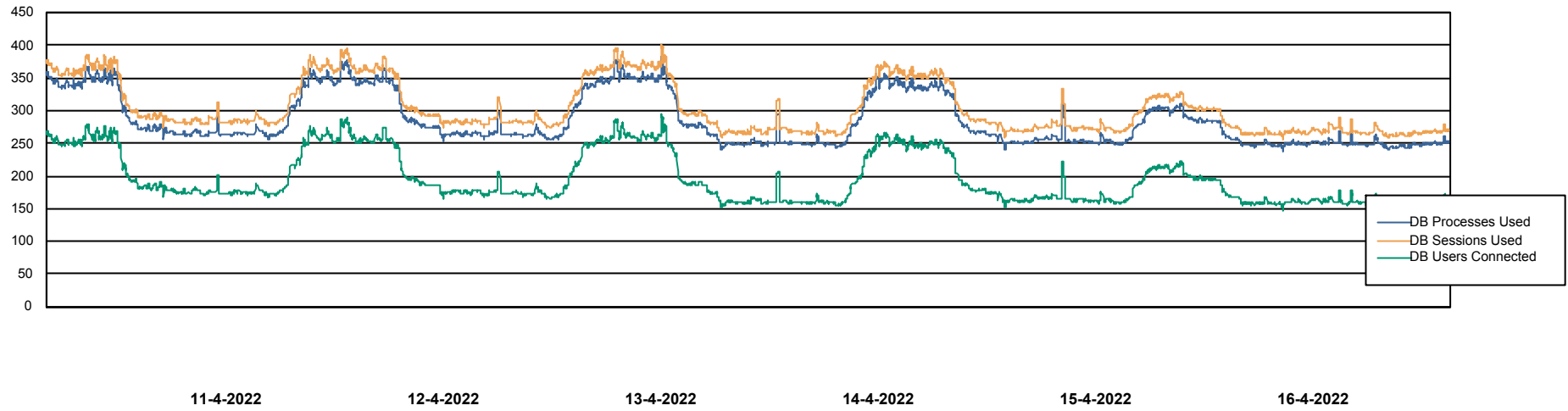
	Free disk space on C: (%)	Total disk space on C: (Gb)	Used disk space on C: (Gb)
16-4-2022	43	149	86
15-4-2022	42	149	86
14-4-2022	43	149	86
13-4-2022	43	149	85
12-4-2022	43	149	85
11-4-2022	43	149	85
10-4-2022	43	149	85

Weekly SLA Customer Report

Customer JSG_Production
Database ID 102



Database Performance JSG_PRD_PICARD_DB



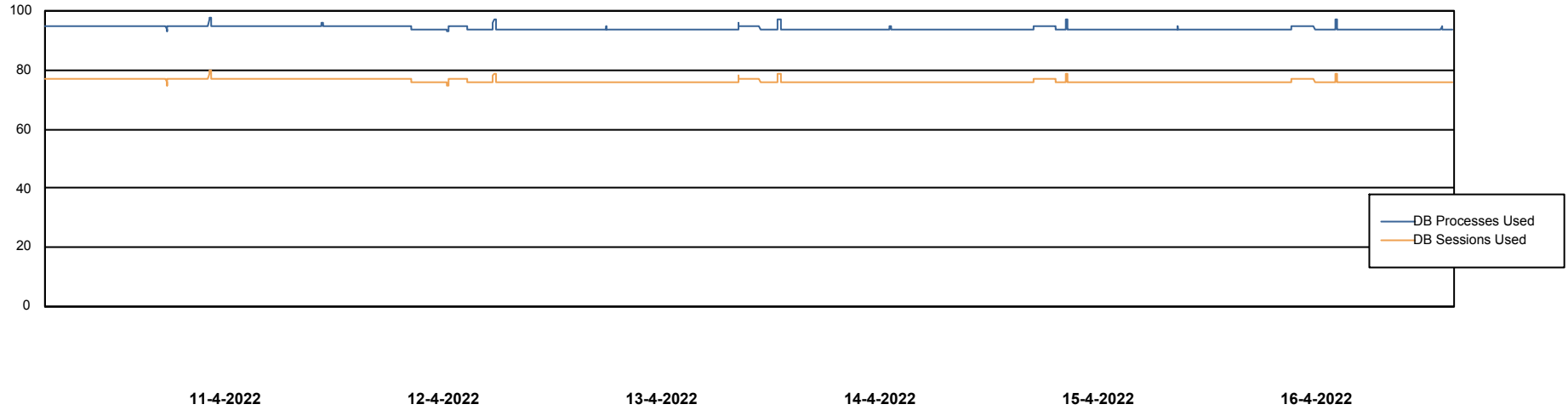
Weekly SLA Customer Report

Customer JSG_Production
Database ID 102



Database Performance JSG_PRD_RIKER_DB

DB Processes Max 4
DB Processes Max 1,000
DB Processes Max 0

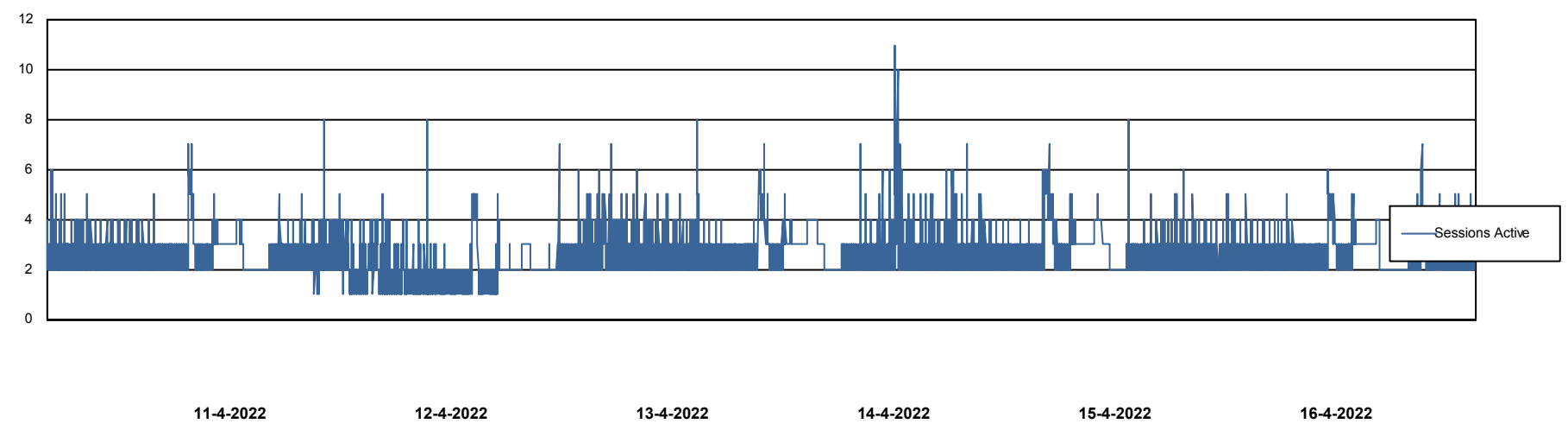
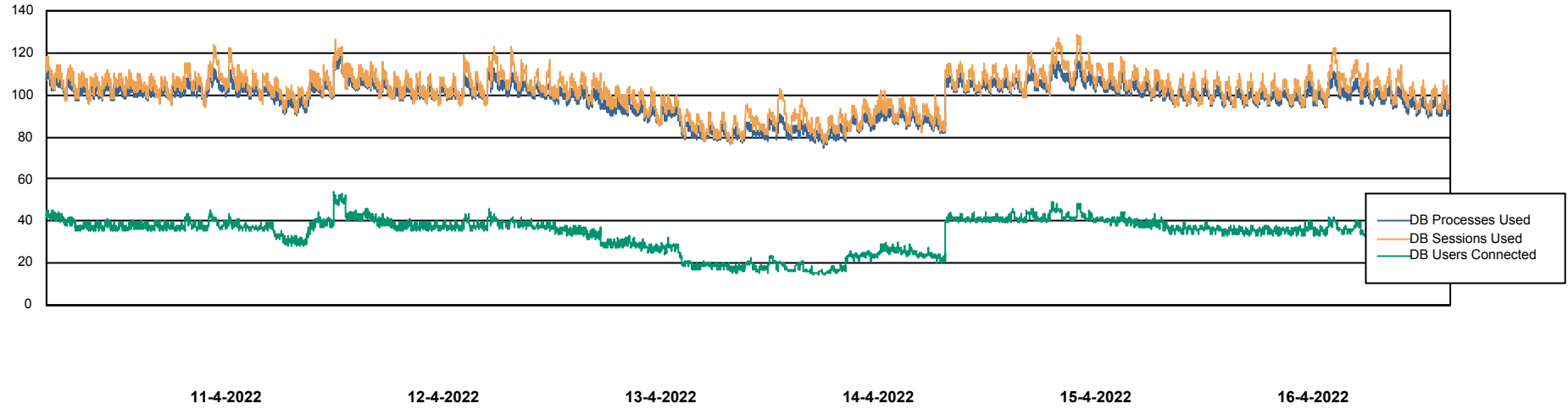


Weekly SLA Customer Report

Customer JSG_Production
Database ID 102



Database Performance JSG_PRD_SAREK_DB



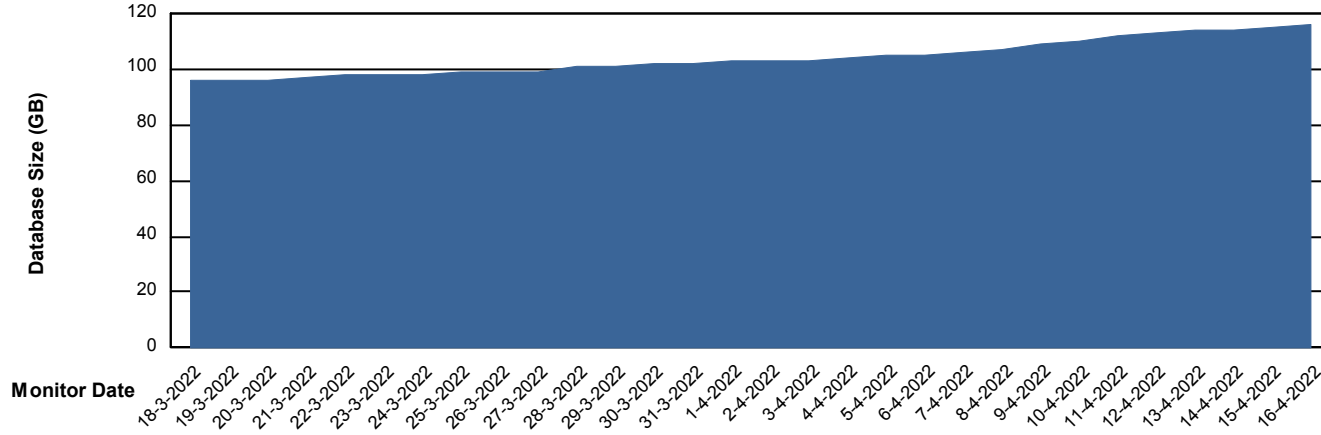
Weekly SLA Customer Report

Customer JSG_Production
Database ID 102



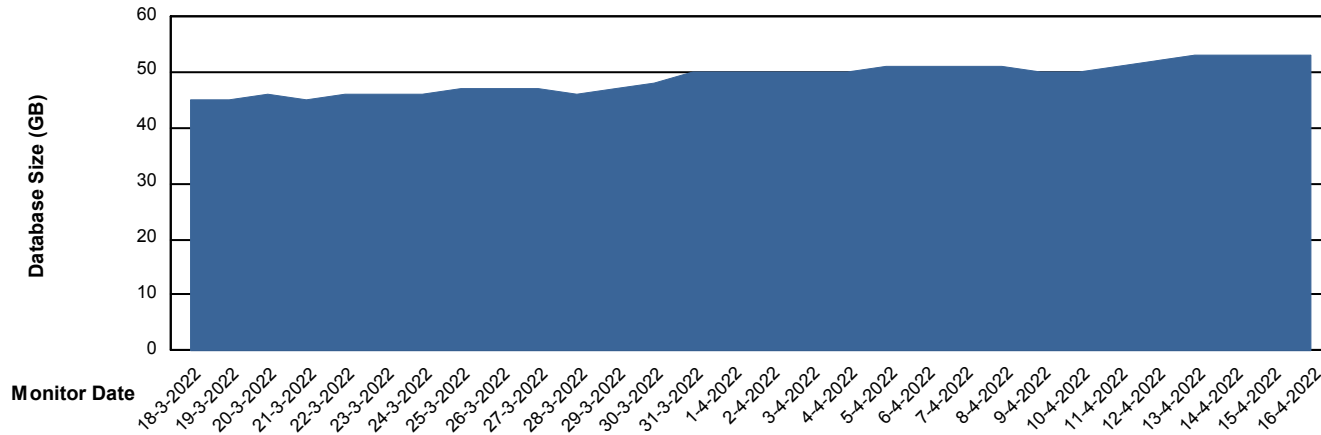
DATABASE SIZE JSG_PRD_PICARD_DB

Database growth over last month



DATABASE SIZE JSG_PRD_SAREK_DB

Database growth over last month



Weekly SLA Customer Report

Customer JSG_Production
 Database ID 102



Database Tablespace JSG_PRD_PICARD_DB

Date	Tablespace Name	Filesize (Gb)	Usedsize (Gb)	Percentage free
16-4-2022	ABSDATA	108	91	16
	INDX	40	5	88
15-4-2022	ABSDATA	108	91	16
	INDX	40	5	88
14-4-2022	ABSDATA	108	90	17
	INDX	40	5	88
13-4-2022	ABSDATA	108	89	17
	INDX	40	5	88
12-4-2022	ABSDATA	108	88	18
	INDX	40	5	88
11-4-2022	ABSDATA	108	87	19
	INDX	40	5	88
10-4-2022	ABSDATA	100	86	14
	INDX	40	5	88

Weekly SLA Customer Report

Customer JSG_Production
 Database ID 102



Database Tablespace JSG_PRD_SAREK_DB

Date	Tablespace Name	Filesize (Gb)	Usedsize (Gb)	Percentage free
16-4-2022	ABSDATA	40	32	21
	INDX	40	19	52
15-4-2022	ABSDATA	40	32	21
	INDX	40	19	52
14-4-2022	ABSDATA	40	31	21
	INDX	40	19	52
13-4-2022	ABSDATA	40	32	21
	INDX	40	19	52
12-4-2022	ABSDATA	40	31	23
	INDX	40	19	52
11-4-2022	ABSDATA	40	30	24
	INDX	40	19	53
10-4-2022	ABSDATA	40	29	27
	INDX	40	19	53

BI Status and last ETL error for JSG_PRD_SAREK_DB

	ma 11/4/2022	di 12/4/2022	wo 13/4/2022	do 14/4/2022	vr 15/4/2022	za 16/4/2022
ABS DataWarehouse ETL Health	OK	Not OK	OK	Not OK	Not OK	Not OK
ABS DWHStaging ETL Health	OK	Not OK	OK	Not OK	Not OK	Not OK

Weekly SLA Customer Report

Customer JSG_Production
Database ID 102



BI last ETL error for	JSG_PRD_SAREK_DB
wo, 13-04-2022	None
do, 14-04-2022	None
vr, 15-04-2022	ORA-00054: resource busy and acquire with NOWAIT specified or timeout expired
za, 16-04-2022	ORA-00054: resource busy and acquire with NOWAIT specified or timeout expired
di, 12-04-2022	ORA-03135: connection lost contact
di, 12-04-2022	ORA-00054: resource busy and acquire with NOWAIT specified or timeout expired
di, 12-04-2022	None
za, 16-04-2022	None
zo, 10-04-2022	None
do, 14-04-2022	ORA-00054: resource busy and acquire with NOWAIT specified or timeout expired
zo, 10-04-2022	None
do, 14-04-2022	None
za, 16-04-2022	None
ma, 11-04-2022	None
ma, 11-04-2022	None
vr, 15-04-2022	None
vr, 15-04-2022	None
di, 12-04-2022	None
wo, 13-04-2022	None

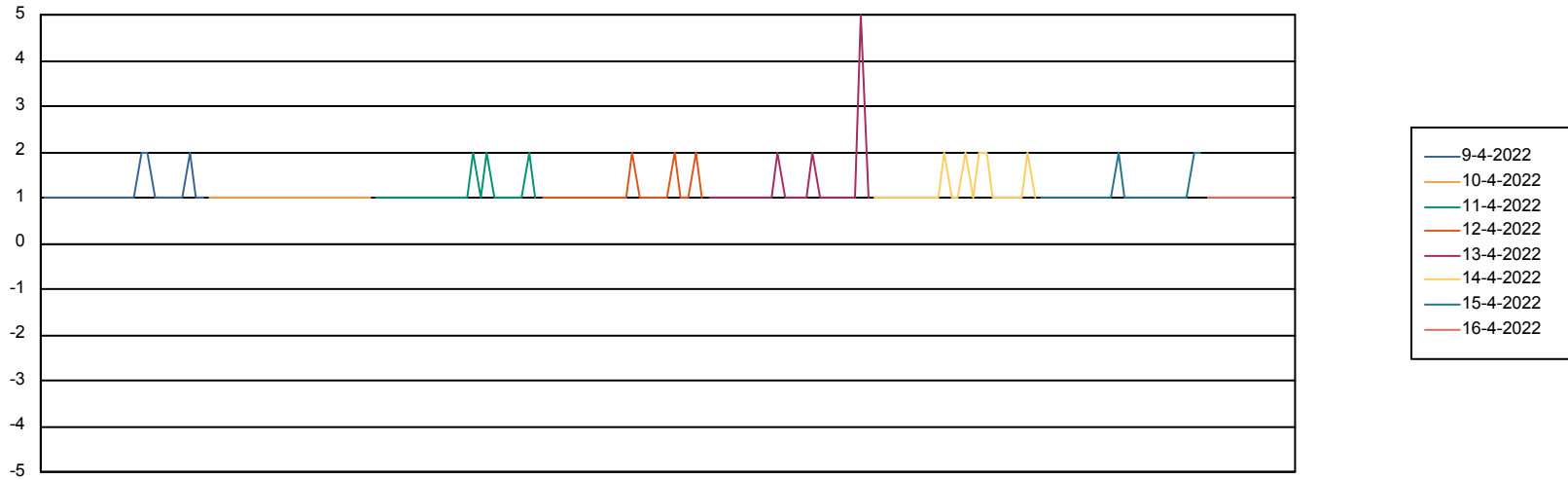
Weekly SLA Customer Report

Customer JSG_Production
Database ID 102



Standby Database Health JSG_Production

Recovery lag for last 7 days



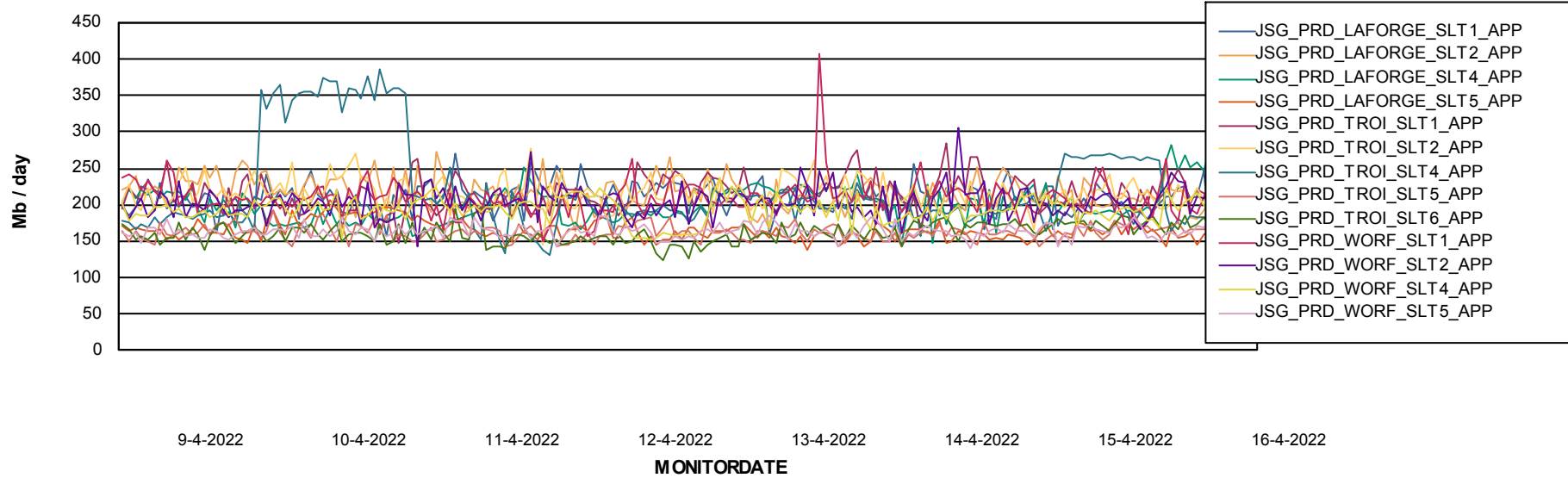
Weekly SLA Customer Report

Customer JSG_Production
Database ID 102

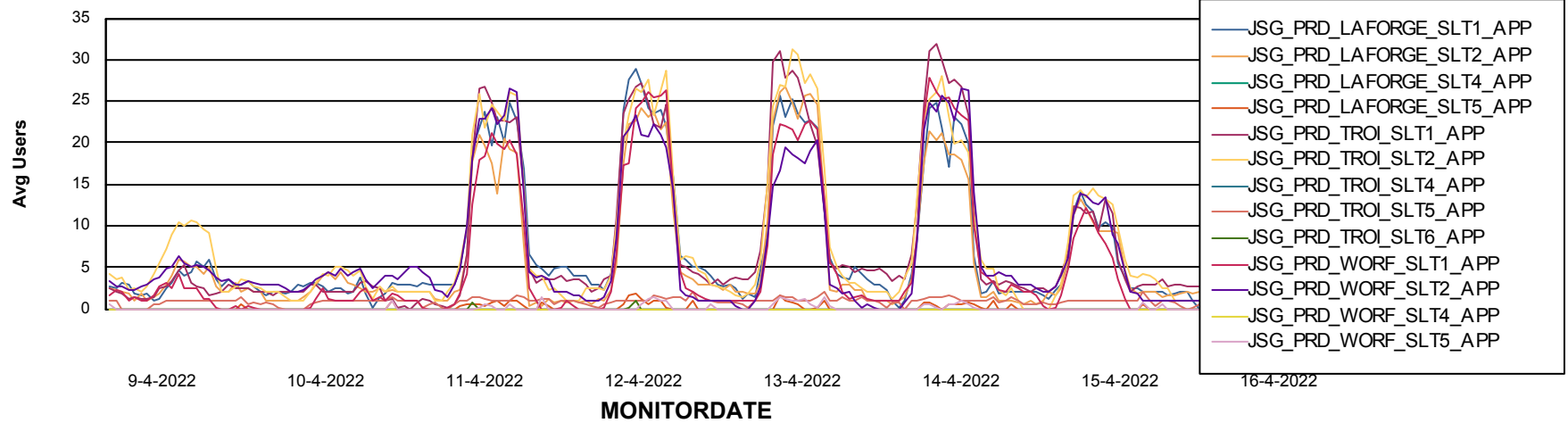


ABSSolute Application Server Services

Avg memory used per ABS Server Service



Avg users per day per ABS server



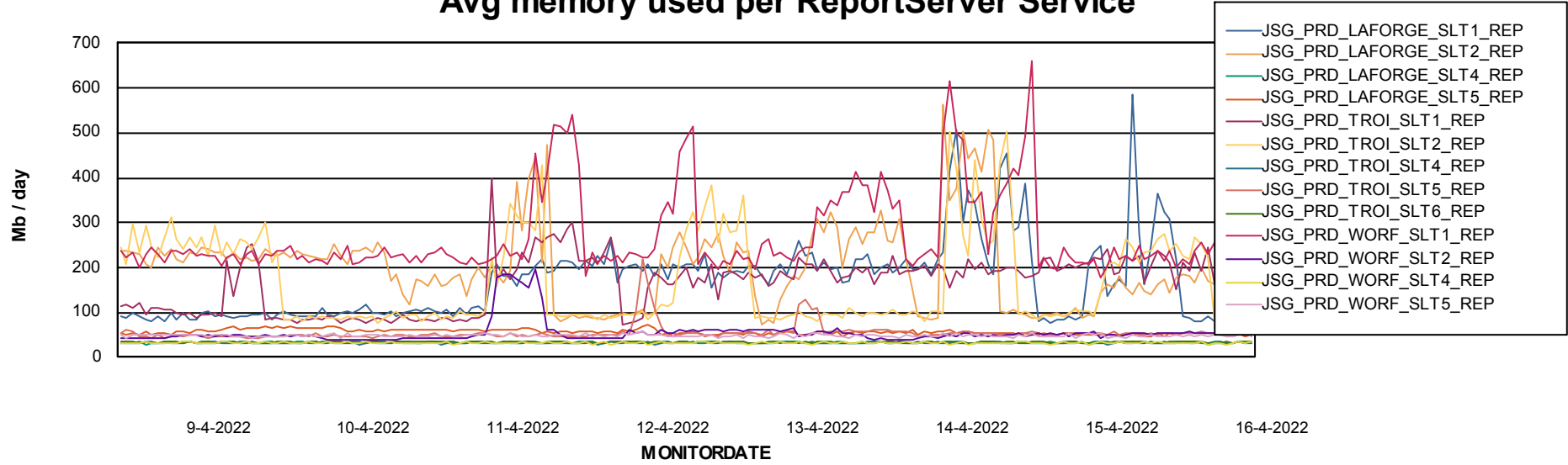
Weekly SLA Customer Report

Customer JSG_Production
Database ID 102



ABSSolute Application ReportServer Services

Avg memory used per ReportServer Service



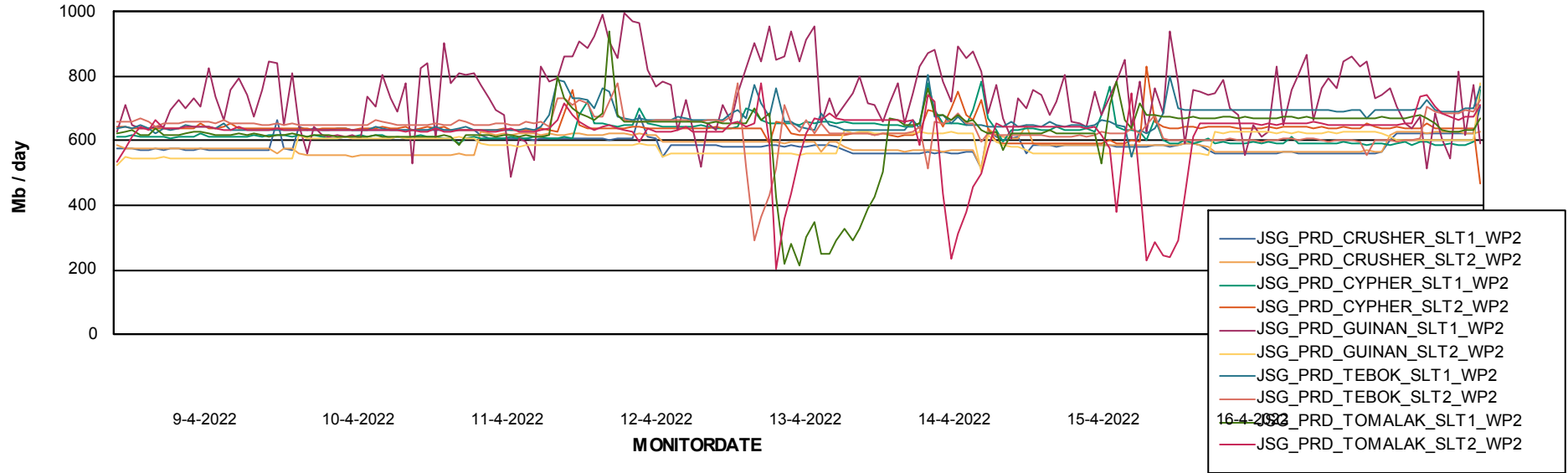
Weekly SLA Customer Report

Customer JSG_Production
Database ID 102



ABSSolute Web Component Services

Avg memory used per ABS Web component



Weekly SLA Customer Report

Customer JSG_Production
Database ID 102



Disaster per ABS component

