

# Weekly SLA Customer Report

Customer JSG\_Production  
 Database ID 102



Harddisk Usage JSG\_PRD\_CRUSHER

	Free disk space on C: (%)	Total disk space on C: (Gb)	Used disk space on C: (Gb)
9-4-2022	40	79	48
8-4-2022	40	79	48
7-4-2022	40	79	48
6-4-2022	40	79	48
5-4-2022	40	79	48
4-4-2022	38	79	49
3-4-2022	38	79	50

Harddisk Usage JSG\_PRD\_CYPHER

	Free disk space on C: (%)	Total disk space on C: (Gb)	Used disk space on C: (Gb)
9-4-2022	58	79	34
8-4-2022	58	79	33
7-4-2022	58	79	33
6-4-2022	58	79	33
5-4-2022	58	79	33
4-4-2022	58	79	33
3-4-2022	58	79	33

# Weekly SLA Customer Report

Customer JSG\_Production  
 Database ID 102



Harddisk Usage JSG\_PRD\_GUINAN

	Free disk space on C: (%)	Total disk space on C: (Gb)	Used disk space on C: (Gb)
9-4-2022	60	79	32
8-4-2022	60	79	32
7-4-2022	60	79	32
6-4-2022	60	79	32
5-4-2022	60	79	32
4-4-2022	60	79	32
3-4-2022	60	79	32

Harddisk Usage JSG\_PRD\_LAFORGE

	Free disk space on C: (%)	Total disk space on C: (Gb)	Used disk space on C: (Gb)
9-4-2022	23	149	115
8-4-2022	23	149	115
7-4-2022	24	149	114
6-4-2022	24	149	114
5-4-2022	24	149	114
4-4-2022	24	149	114
3-4-2022	24	149	114

# Weekly SLA Customer Report

Customer JSG\_Production  
 Database ID 102



Harddisk Usage JSG\_PRD\_PICARD

	Free disk space on C: (%)	Total disk space on C: (Gb)	Used disk space on C: (Gb)	Free disk space on D: (%)	Total disk space on D: (Gb)	Used disk space on D: (Gb)
9-4-2022	57	149	64	39	1,024	621
8-4-2022	57	149	64	40	1,024	612
7-4-2022	57	149	64	43	1,024	587
6-4-2022	57	149	64	45	1,024	561
5-4-2022	57	149	64	48	1,024	535
4-4-2022	57	149	64	50	1,024	514
3-4-2022	57	149	65	51	1,024	504

Harddisk Usage JSG\_PRD\_RIKER

	Free disk space on C: (%)	Total disk space on C: (Gb)	Used disk space on C: (Gb)	Free disk space on D: (%)	Total disk space on D: (Gb)	Used disk space on D: (Gb)
9-4-2022	71	199	58	35	1,024	662
8-4-2022	71	199	58	36	1,024	655
7-4-2022	71	199	58	37	1,024	646
6-4-2022	71	199	58	38	1,024	638
5-4-2022	71	199	58	39	1,024	627
4-4-2022	71	199	58	40	1,024	616
3-4-2022	71	199	58	41	1,024	603

# Weekly SLA Customer Report

Customer JSG\_Production  
 Database ID 102



Harddisk Usage JSG\_PRD\_SAREK

	Free disk space on C: (%)	Total disk space on C: (Gb)	Used disk space on C: (Gb)	Free disk space on D: (%)	Total disk space on D: (Gb)	Used disk space on D: (Gb)
9-4-2022	66	149	51	52	750	360
8-4-2022	65	149	52	50	750	375
7-4-2022	66	149	51	50	750	371
6-4-2022	66	149	51	51	750	366
5-4-2022	66	149	51	52	750	359
4-4-2022	66	149	51	53	750	354
3-4-2022	66	149	51	53	750	356

Harddisk Usage JSG\_PRD\_TEBOK

	Free disk space on C: (%)	Total disk space on C: (Gb)	Used disk space on C: (Gb)
9-4-2022	63	79	29
8-4-2022	63	79	29
7-4-2022	63	79	29
6-4-2022	63	79	29
5-4-2022	63	79	29
4-4-2022	62	79	30
3-4-2022	61	79	31

# Weekly SLA Customer Report

Customer JSG\_Production  
 Database ID 102



Harddisk Usage JSG\_PRD\_TOMALAK

	Free disk space on C: (%)	Total disk space on C: (Gb)	Used disk space on C: (Gb)
9-4-2022	52	79	38
8-4-2022	52	79	38
7-4-2022	52	79	38
6-4-2022	52	79	38
5-4-2022	52	79	38
4-4-2022	52	79	38
3-4-2022	52	79	38

Harddisk Usage JSG\_PRD\_TROI

	Free disk space on C: (%)	Total disk space on C: (Gb)	Used disk space on C: (Gb)
9-4-2022	45	149	82
8-4-2022	45	149	82
7-4-2022	45	149	82
6-4-2022	46	149	80
5-4-2022	47	149	79
4-4-2022	48	149	78
3-4-2022	48	149	78

# Weekly SLA Customer Report

Customer JSG\_Production  
Database ID 102



Harddisk Usage JSG\_PRD\_WORF

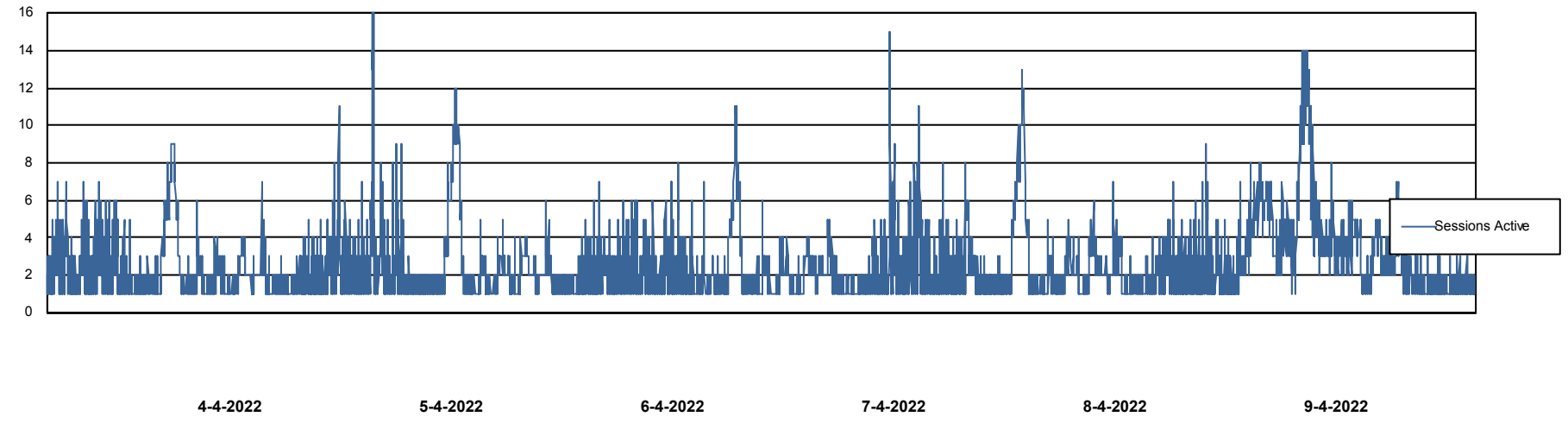
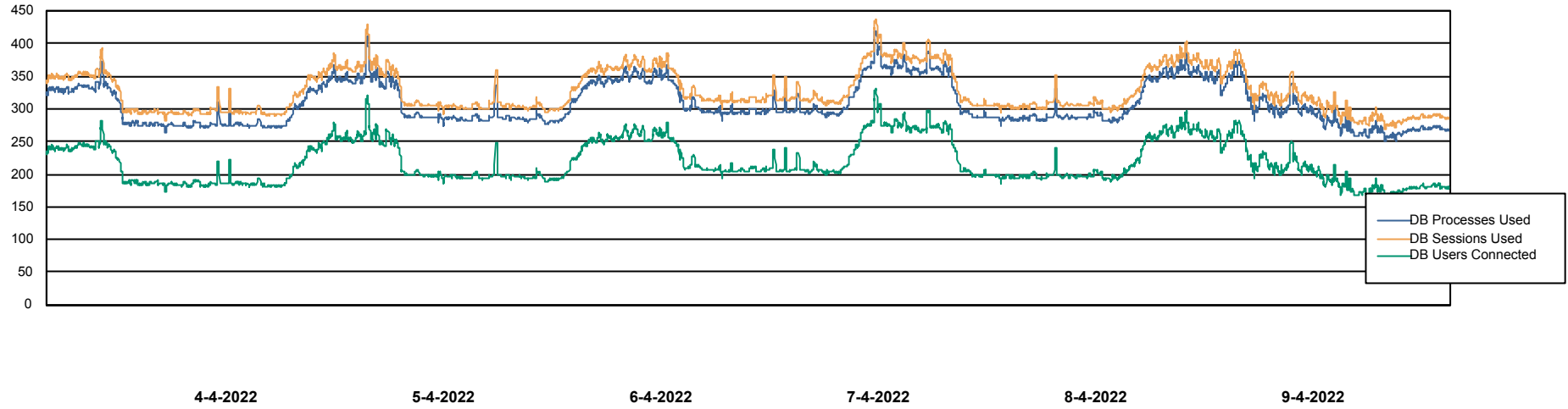
	Free disk space on C: (%)	Total disk space on C: (Gb)	Used disk space on C: (Gb)
9-4-2022	43	149	85
8-4-2022	43	149	85
7-4-2022	43	149	84
6-4-2022	44	149	84
5-4-2022	44	149	84
4-4-2022	44	149	84
3-4-2022	43	149	84

# Weekly SLA Customer Report

Customer JSG\_Production  
Database ID 102



## Database Performance JSG\_PRD\_PICARD\_DB



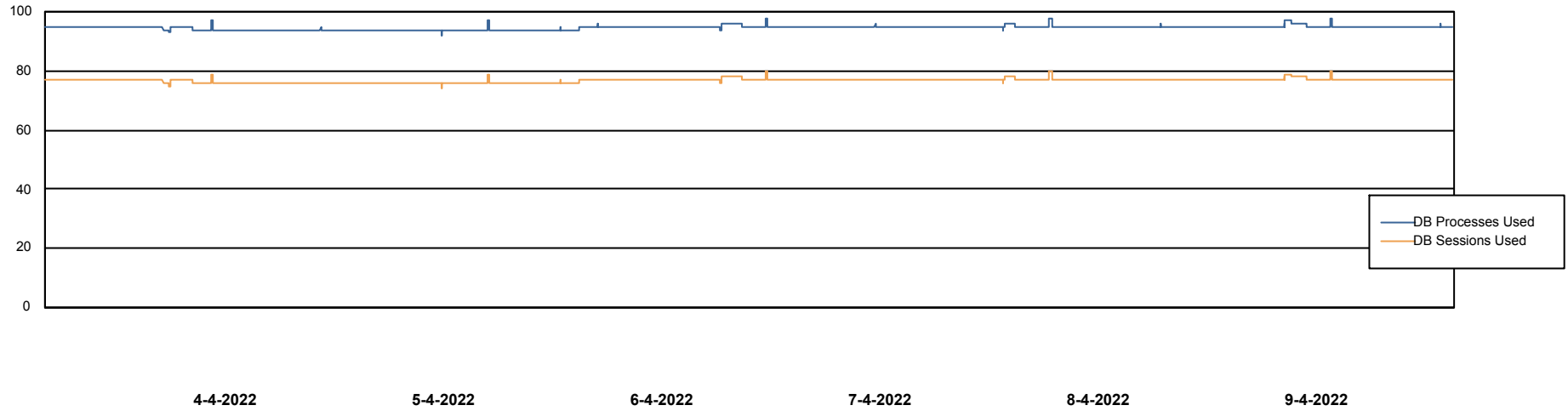
# Weekly SLA Customer Report

Customer JSG\_Production  
Database ID 102



## Database Performance JSG\_PRD\_RIKER\_DB

DB Processes Max 0  
DB Processes Max 4  
DB Processes Max 1,000

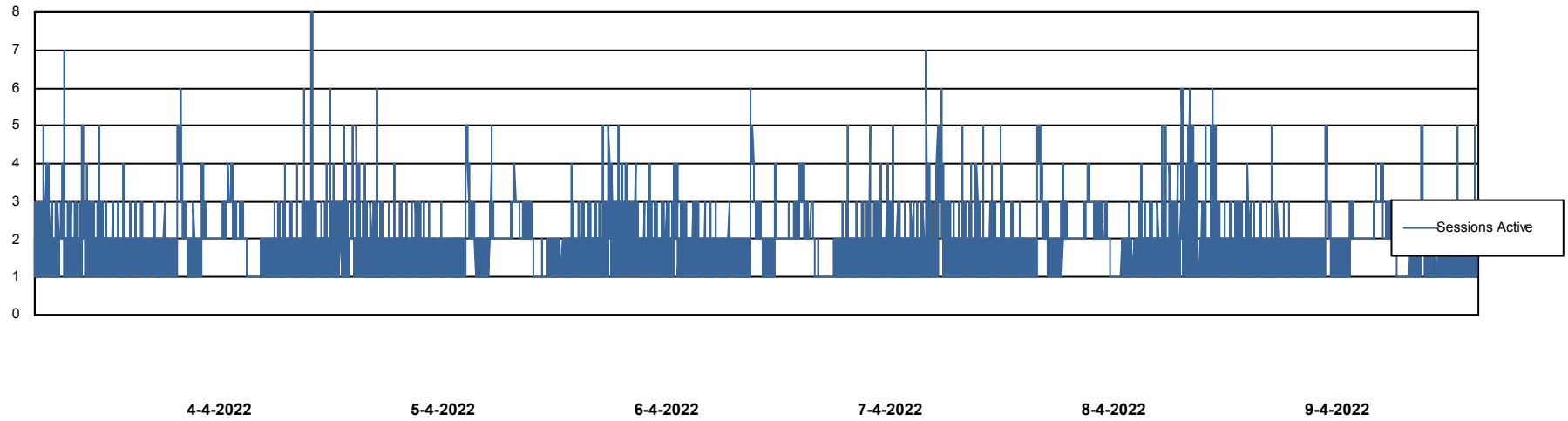
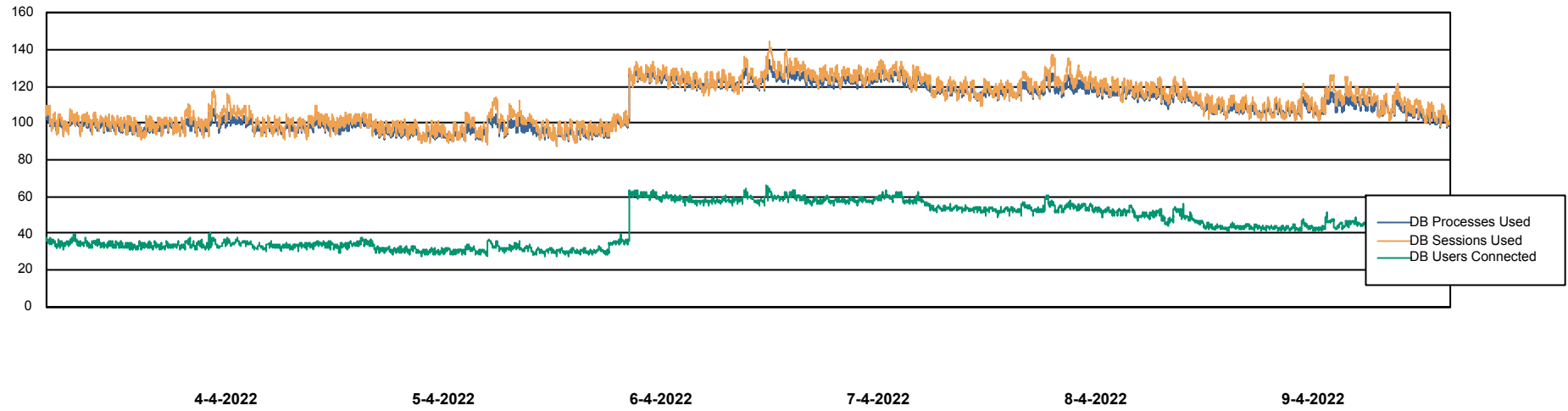


# Weekly SLA Customer Report

Customer JSG\_Production  
Database ID 102



## Database Performance JSG\_PRD\_SAREK\_DB



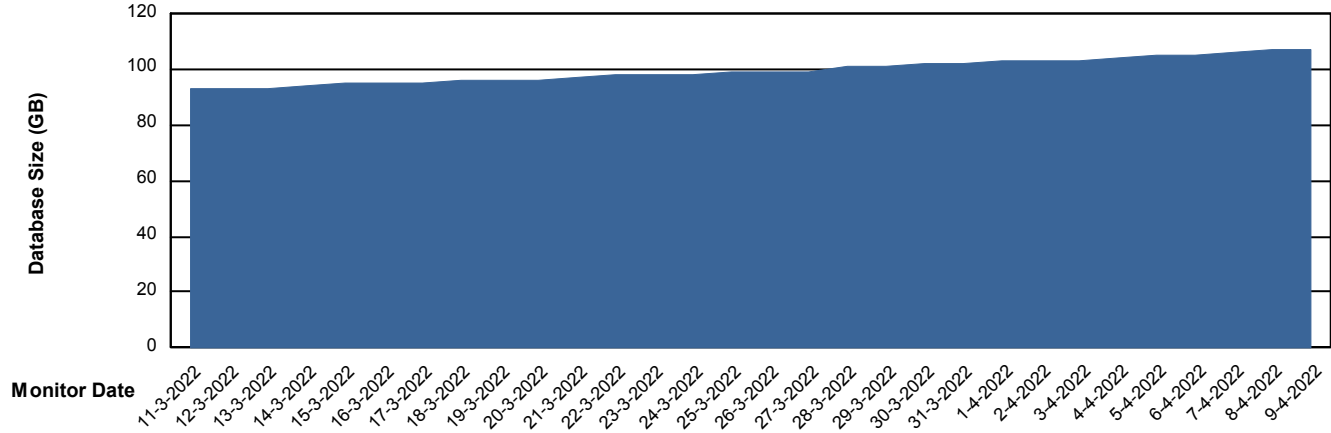
# Weekly SLA Customer Report

Customer JSG\_Production  
Database ID 102



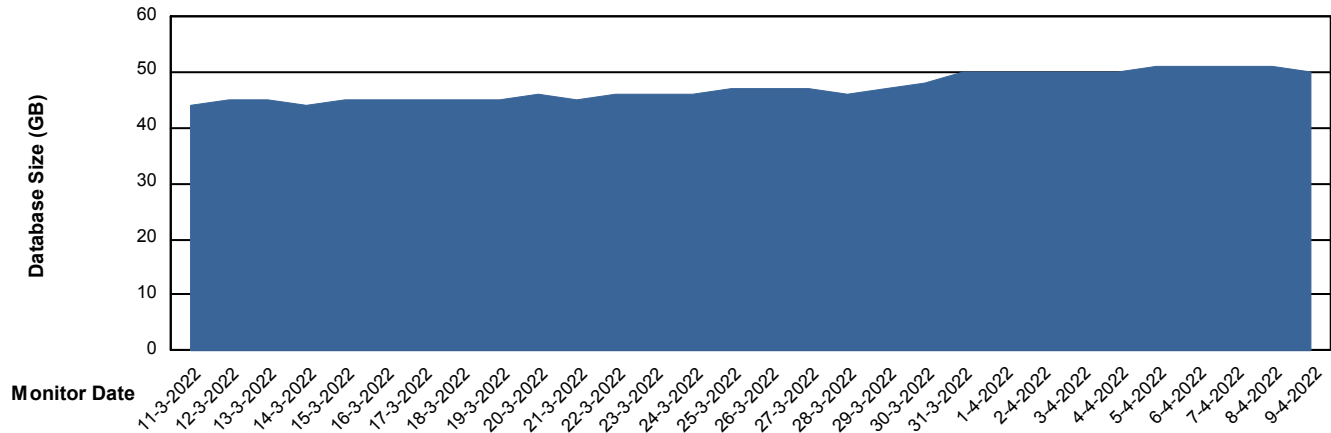
DATABASE SIZE JSG\_PRD\_PICARD\_DB

### Database growth over last month



DATABASE SIZE JSG\_PRD\_SAREK\_DB

### Database growth over last month



# Weekly SLA Customer Report

Customer JSG\_Production  
Database ID 102



Database Tablespace JSG\_PRD\_PICARD\_DB

Date	Tablespace Name	Filesize (Gb)	Usedsize (Gb)	Percentage free
9-4-2022	ABSDATA	100	82	18
	INDX	40	5	88
8-4-2022	ABSDATA	100	82	18
	INDX	40	5	88
7-4-2022	ABSDATA	100	82	18
	INDX	40	5	88
6-4-2022	ABSDATA	100	81	19
	INDX	40	5	88
5-4-2022	ABSDATA	100	81	19
	INDX	40	5	89
4-4-2022	ABSDATA	95	80	16
	INDX	40	5	89
3-4-2022	ABSDATA	95	79	16
	INDX	40	5	89

# Weekly SLA Customer Report

Customer JSG\_Production  
 Database ID 102



Database Tablespace JSG\_PRD\_SAREK\_DB

Date	Tablespace Name	Filesize (Gb)	Usedsize (Gb)	Percentage free
9-4-2022	ABSDATA	40	30	26
	INDX	40	18	54
8-4-2022	ABSDATA	40	31	23
	INDX	40	18	54
7-4-2022	ABSDATA	40	31	23
	INDX	40	18	54
6-4-2022	ABSDATA	40	31	23
	INDX	40	18	55
5-4-2022	ABSDATA	40	30	24
	INDX	40	18	55
4-4-2022	ABSDATA	40	30	25
	INDX	40	18	56
3-4-2022	ABSDATA	40	30	25
	INDX	40	18	56

BI Status and last ETL error for JSG\_PRD\_SAREK\_DB

	ma 4/4/2022	di 5/4/2022	wo 6/4/2022	do 7/4/2022	vr 8/4/2022	za 9/4/2022
<b>ABS DataWarehouse ETL Health</b>	OK	OK	OK	OK	OK	OK
<b>ABS DWHStaging ETL Health</b>	OK	OK	OK	OK	OK	OK

# Weekly SLA Customer Report

Customer JSG\_Production  
Database ID 102



BI last ETL error for	JSG_PRD_SAREK_DB
ma, 4-04-2022	None
ma, 4-04-2022	None
di, 5-04-2022	None
wo, 6-04-2022	None
do, 7-04-2022	None
di, 5-04-2022	None
vr, 8-04-2022	None
za, 9-04-2022	None
zo, 3-04-2022	None
wo, 6-04-2022	None
vr, 8-04-2022	None
do, 7-04-2022	None
za, 9-04-2022	None
zo, 3-04-2022	None

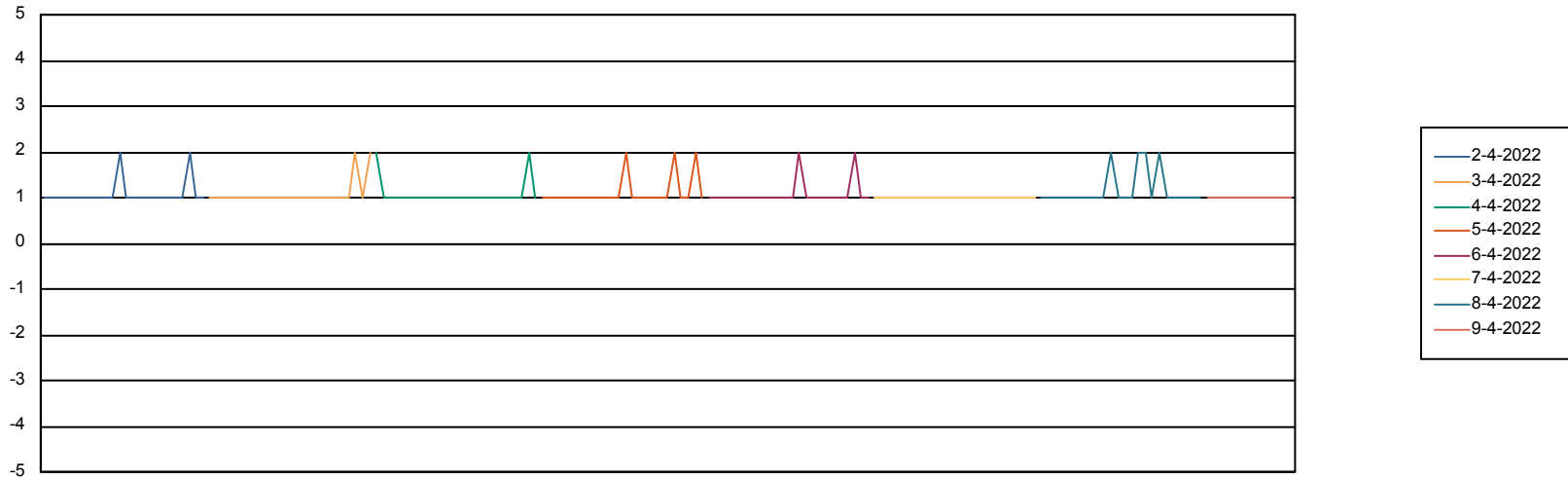
# Weekly SLA Customer Report

Customer JSG\_Production  
Database ID 102



Standby Database Health JSG\_Production

## Recovery lag for last 7 days



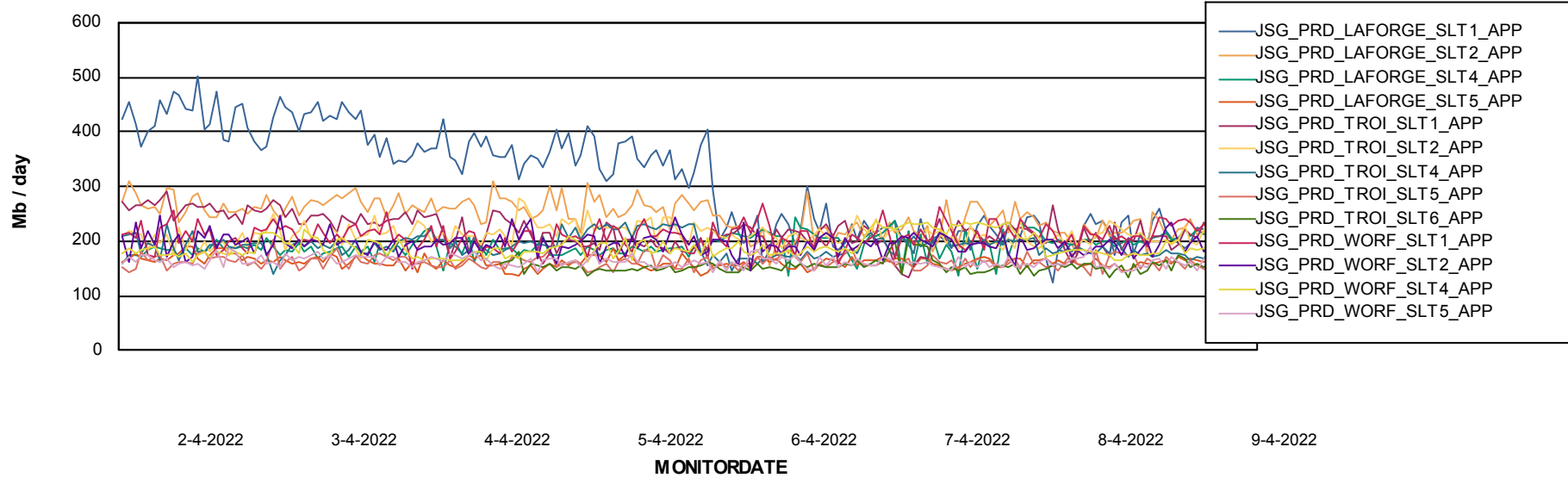
# Weekly SLA Customer Report

Customer JSG\_Production  
Database ID 102

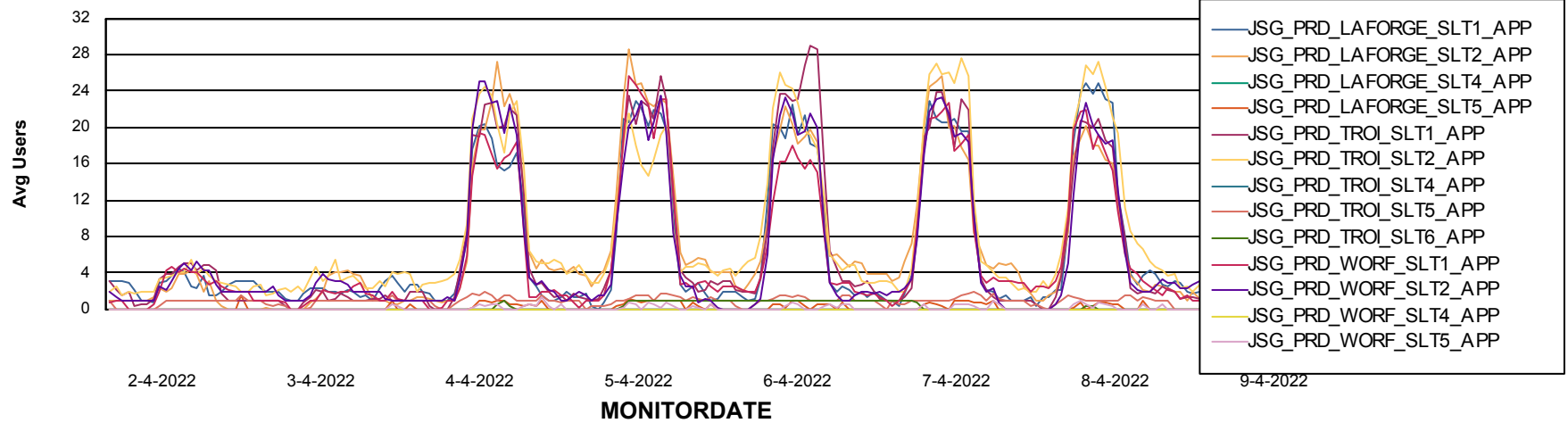


## ABSSolute Application Server Services

### Avg memory used per ABS Server Service



### Avg users per day per ABS server



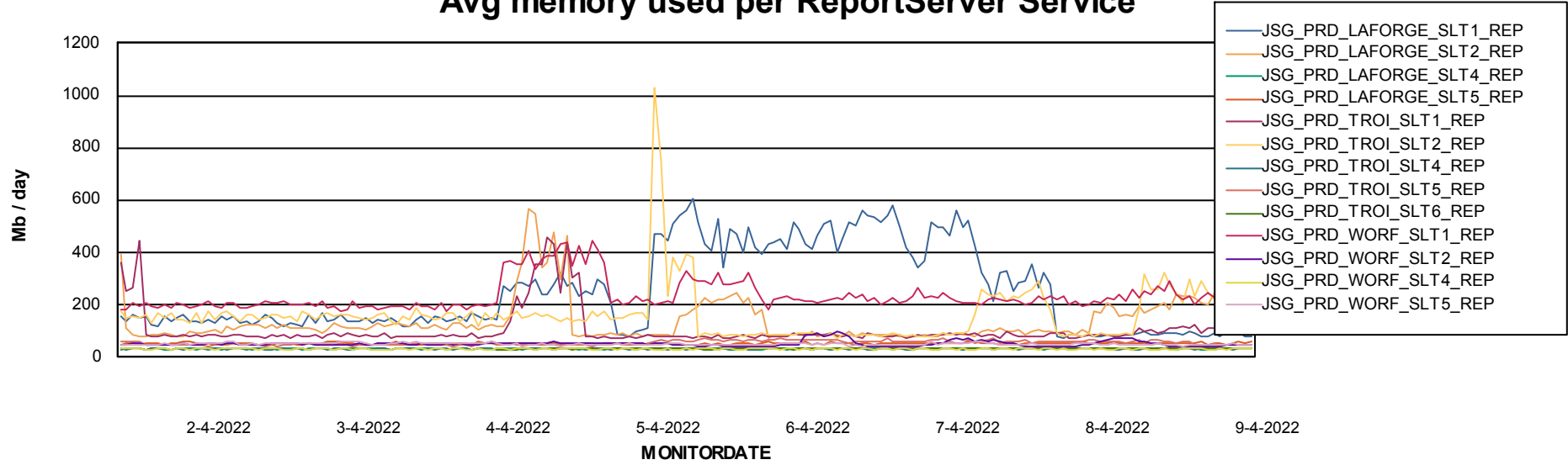
# Weekly SLA Customer Report

Customer JSG\_Production  
Database ID 102



## ABSSolute Application ReportServer Services

### Avg memory used per ReportServer Service



# Weekly SLA Customer Report

Customer JSG\_Production  
Database ID 102



## ABSSolute Web Component Services

### Avg memory used per ABS Web component

