

# Weekly SLA Customer Report

Customer KBR\_Production  
Database ID 117



## Harddisk Usage BI-DBSRV

	Free disk space on C: (%)	Total disk space on C: (Gb)	Used disk space on C: (Gb)	Free disk space on D: (%)	Total disk space on D: (Gb)	Used disk space on D: (Gb)	Free disk space on E: (%)	Total disk space on E: (Gb)	Used disk space on E: (Gb)
2-4-2022	34	100	66	91	500	43	55	310	140
1-4-2022	34	100	66	91	500	43	55	310	140
31-3-2022	33	100	66	91	500	43	55	310	140
30-3-2022	33	100	66	91	500	43	54	310	141
29-3-2022	33	100	66	91	500	43	54	310	142
28-3-2022	33	100	66	91	500	43	55	310	139
27-3-2022	33	100	66	91	500	43	55	310	140

## Harddisk Usage KBR\_PRD\_APPSRV1

	Free disk space on C: (%)	Total disk space on C: (Gb)	Used disk space on C: (Gb)
2-4-2022	54	149	68
1-4-2022	54	149	68
31-3-2022	54	149	68
30-3-2022	54	149	68
29-3-2022	54	149	68
28-3-2022	54	149	68
27-3-2022	54	149	68

# Weekly SLA Customer Report

Customer KBR\_Production  
Database ID 117



## Harddisk Usage KBR\_PRD\_APPSRV2

	Free disk space on C: (%)	Total disk space on C: (Gb)	Used disk space on C: (Gb)
2-4-2022	32	99	67
1-4-2022	32	99	67
31-3-2022	32	99	67
30-3-2022	32	99	67
29-3-2022	32	99	67
28-3-2022	32	99	67
27-3-2022	32	99	67

## Harddisk Usage KBR\_PRD\_DB-SRV1

	Free disk space on C: (%)	Total disk space on C: (Gb)	Used disk space on C: (Gb)	Free disk space on D: (%)	Total disk space on D: (Gb)	Used disk space on D: (Gb)	Free disk space on E: (%)	Total disk space on E: (Gb)	Used disk space on E: (Gb)
2-4-2022	39	99	61	96	800	30	88	400	47
1-4-2022	39	99	61	96	800	30	88	400	46
31-3-2022	39	99	61	96	800	30	89	400	44
30-3-2022	39	99	61	96	800	30	89	400	44
29-3-2022	39	99	61	96	800	30	89	400	43
28-3-2022	39	99	61	96	800	30	89	400	44
27-3-2022	39	99	61	96	800	30	89	400	45

# Weekly SLA Customer Report

Customer KBR\_Production  
Database ID 117



## Harddisk Usage KBR\_PRD\_WEBSRV1

	Free disk space on / (%)	Total disk space on / (Gb)	Used disk space on / (Gb)	Free disk space on /boot (%)	Total disk space on /boot (Gb)	Used disk space on /boot (Gb)
2-4-2022	72	55	16	60	1	0
1-4-2022	72	55	16	60	1	0
31-3-2022	72	55	16	60	1	0
30-3-2022	72	55	16	60	1	0
29-3-2022	72	55	16	60	1	0
28-3-2022	72	55	16	60	1	0
27-3-2022	72	55	16	60	1	0

## Harddisk Usage KBR\_PRD\_WEBSRV2

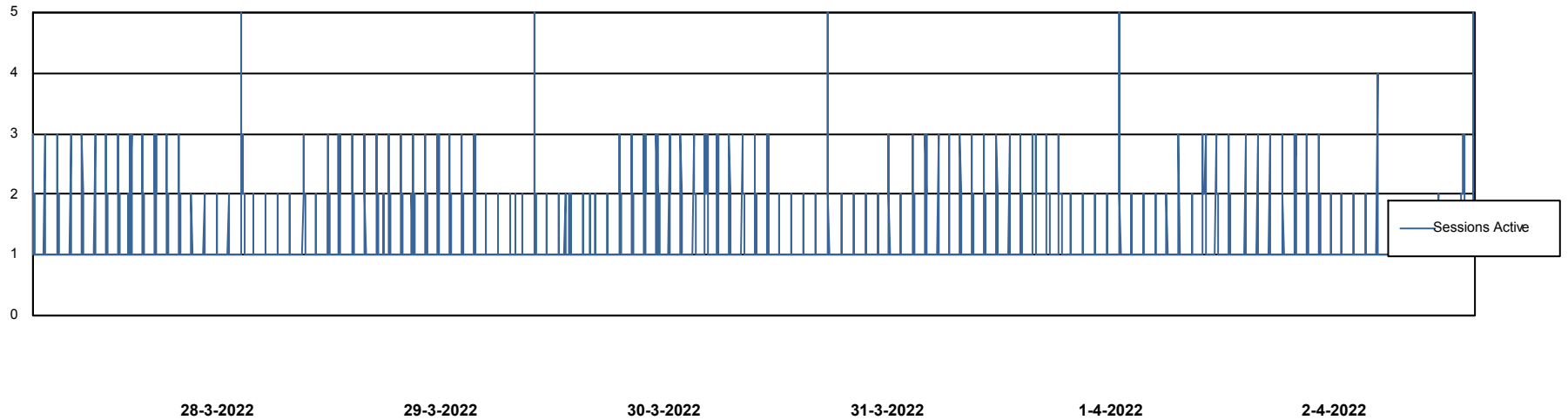
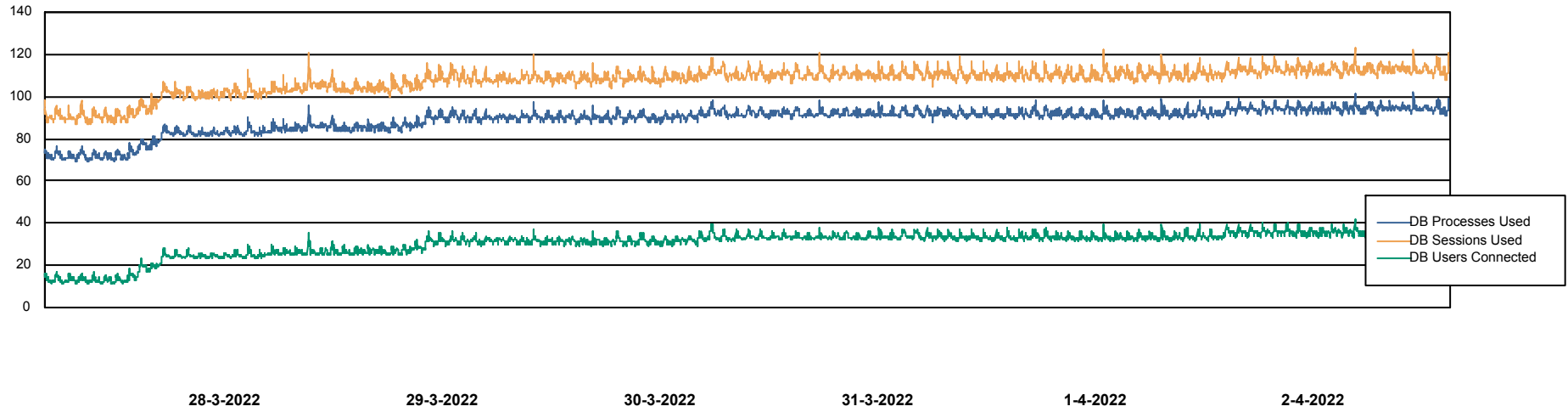
	Free disk space on / (%)	Total disk space on / (Gb)	Used disk space on / (Gb)	Free disk space on /boot (%)	Total disk space on /boot (Gb)	Used disk space on /boot (Gb)
2-4-2022	74	55	14	62	1	0
1-4-2022	74	55	14	62	1	0
31-3-2022	74	55	14	62	1	0
30-3-2022	74	55	14	62	1	0
29-3-2022	74	55	14	62	1	0
28-3-2022	74	55	14	62	1	0
27-3-2022	74	55	14	62	1	0

# Weekly SLA Customer Report

Customer KBR\_Production  
Database ID 117



## Database Performance BI-DBSRV\_DB

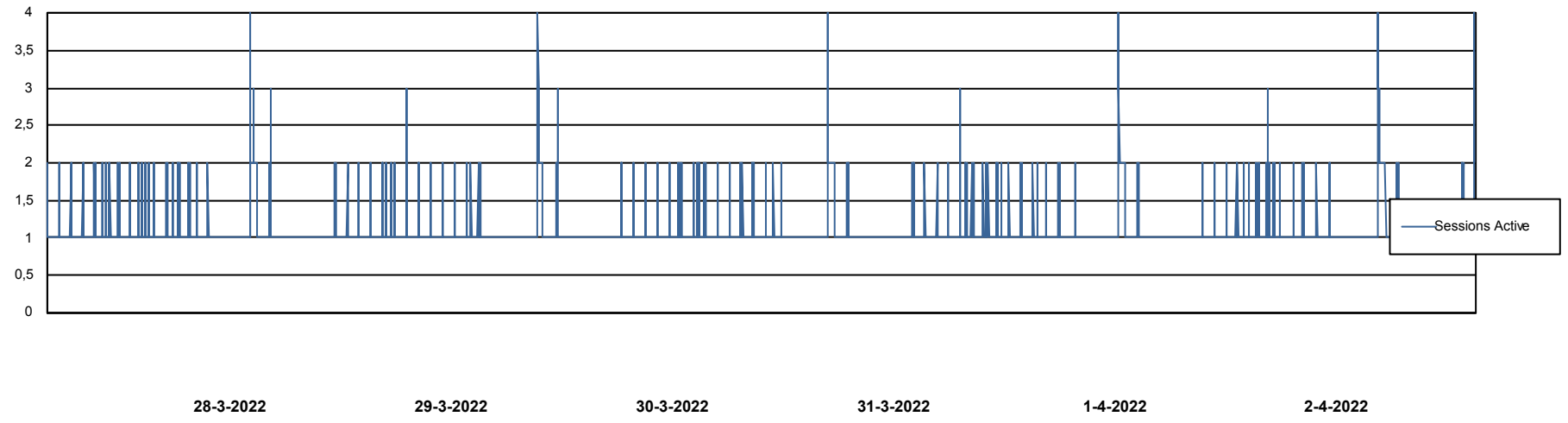
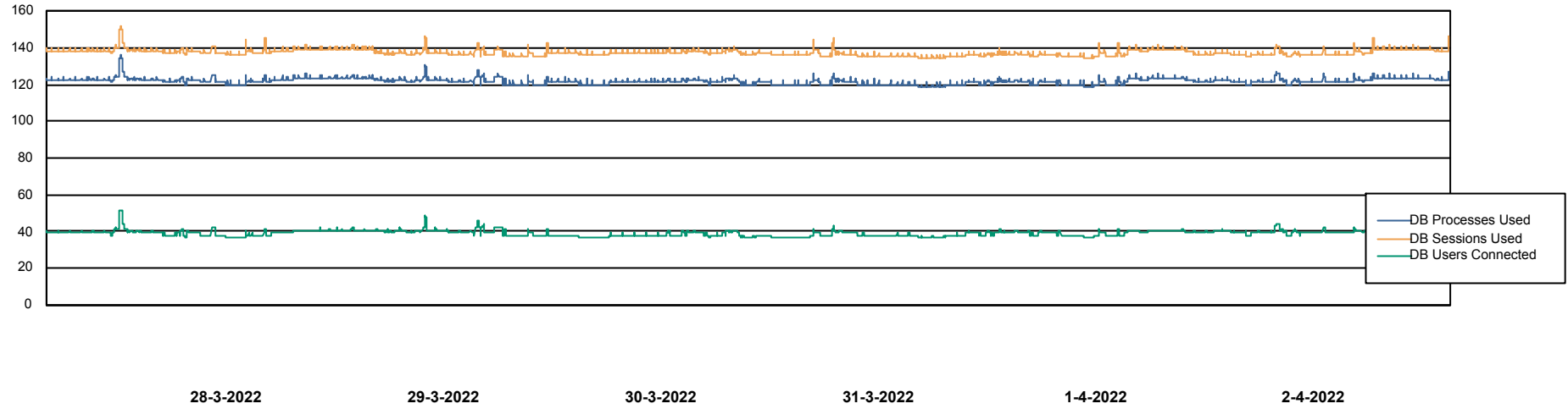


# Weekly SLA Customer Report

Customer KBR\_Production  
Database ID 117



## Database Performance KBR\_PRD\_DB-SRV1\_DB



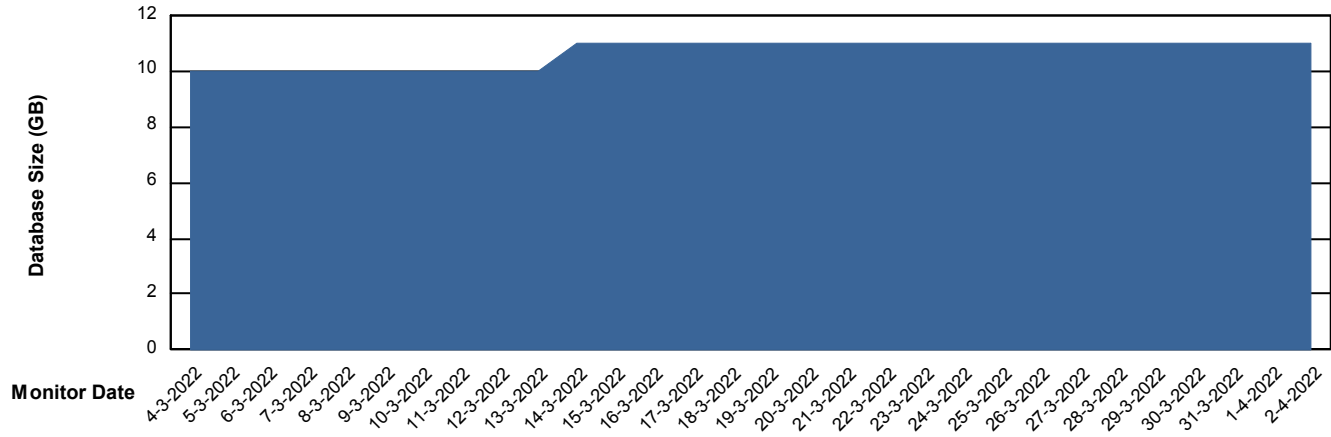
# Weekly SLA Customer Report

Customer KBR\_Production  
Database ID 117



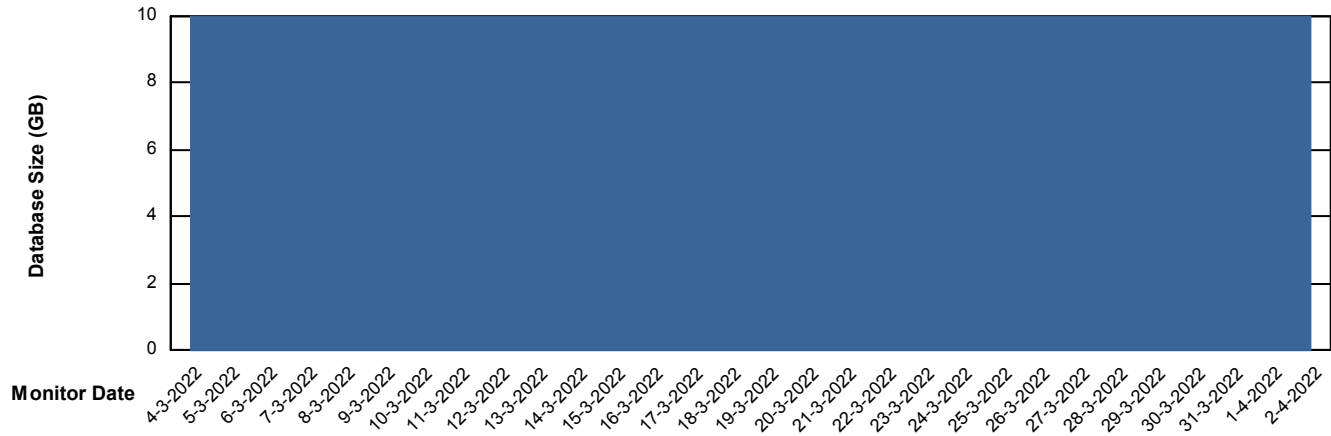
DATABASE SIZE BI-DBSRV\_DB

### Database growth over last month



DATABASE SIZE KBR\_PRD\_DB-SRV1\_DB

### Database growth over last month



# Weekly SLA Customer Report

Customer KBR\_Production  
 Database ID 117



Database Tablespace BI-DBSRV\_DB

Date	Tablespace Name	Filesize (Gb)	Usedsize (Gb)	Percentage free
2-4-2022	ABSDATA	6	4	31
	INDX	8	4	47
1-4-2022	ABSDATA	6	4	31
	INDX	8	4	47
31-3-2022	ABSDATA	6	4	31
	INDX	8	4	47
30-3-2022	ABSDATA	6	4	32
	INDX	8	4	47
29-3-2022	ABSDATA	6	4	32
	INDX	8	4	47
28-3-2022	ABSDATA	6	4	32
	INDX	8	4	47
27-3-2022	ABSDATA	6	4	33
	INDX	8	4	48

# Weekly SLA Customer Report

Customer KBR\_Production  
 Database ID 117



Database Tablespace KBR\_PRD\_DB-SRV1\_DB

Date	Tablespace Name	Filesize (Gb)	Usedsize (Gb)	Percentage free
2-4-2022	ABSDATA	4	3	19
	INDX	8	1	91
1-4-2022	ABSDATA	4	3	19
	INDX	8	1	91
31-3-2022	ABSDATA	4	3	19
	INDX	8	1	91
30-3-2022	ABSDATA	4	3	20
	INDX	8	1	91
29-3-2022	ABSDATA	4	3	20
	INDX	8	1	91
28-3-2022	ABSDATA	4	3	21
	INDX	8	1	91
27-3-2022	ABSDATA	4	3	22
	INDX	8	1	91

BI Status and last ETL error for BI-DBSRV\_DB

	ma 28/3/2022	di 29/3/2022	wo 30/3/2022	do 31/3/2022	vr 1/4/2022	za 2/4/2022
<b>ABS DataWarehouse ETL Health</b>	OK	OK	OK	OK	OK	OK
<b>ABS DWHStaging ETL Health</b>	OK	OK	OK	OK	OK	OK

# Weekly SLA Customer Report

Customer KBR\_Production  
Database ID 117



BI last ETL error for	BI-DBSRV_DB
za, 2-04-2022	None
do, 31-03-2022	None
ma, 28-03-2022	None
wo, 30-03-2022	None
zo, 27-03-2022	None
di, 29-03-2022	None
do, 31-03-2022	None
za, 2-04-2022	None
wo, 30-03-2022	None
vr, 1-04-2022	None
vr, 1-04-2022	None
zo, 27-03-2022	None
ma, 28-03-2022	None
di, 29-03-2022	None

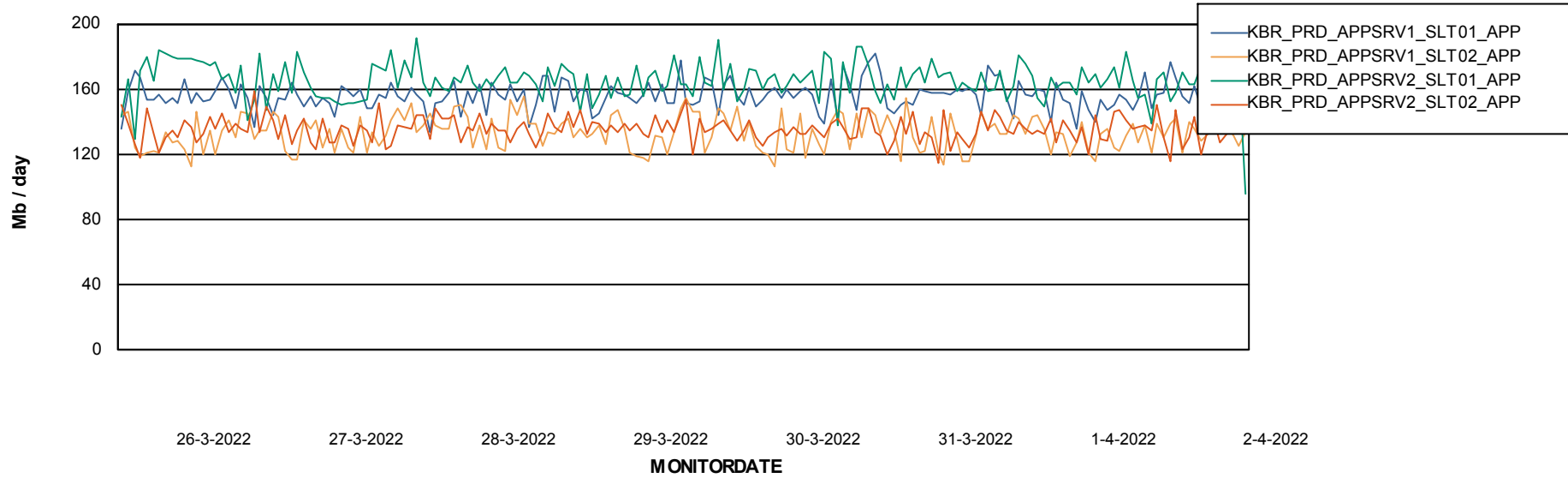
# Weekly SLA Customer Report

Customer KBR\_Production  
Database ID 117



## ABSSolute Application Server Services

### Avg memory used per ABS Server Service



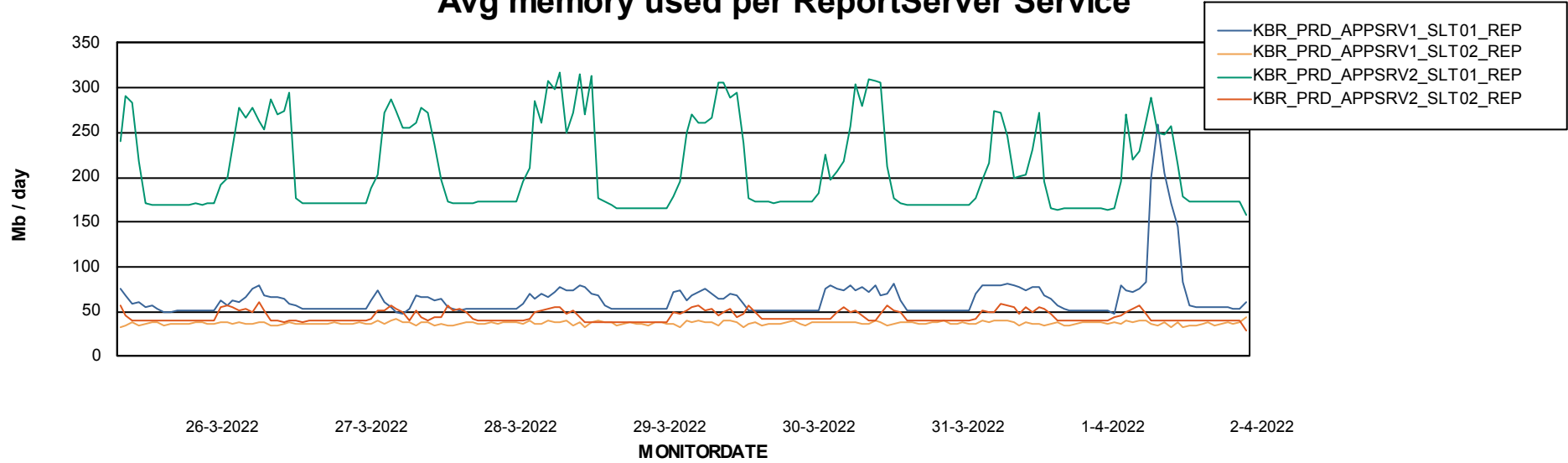
# Weekly SLA Customer Report

Customer KBR\_Production  
Database ID 117

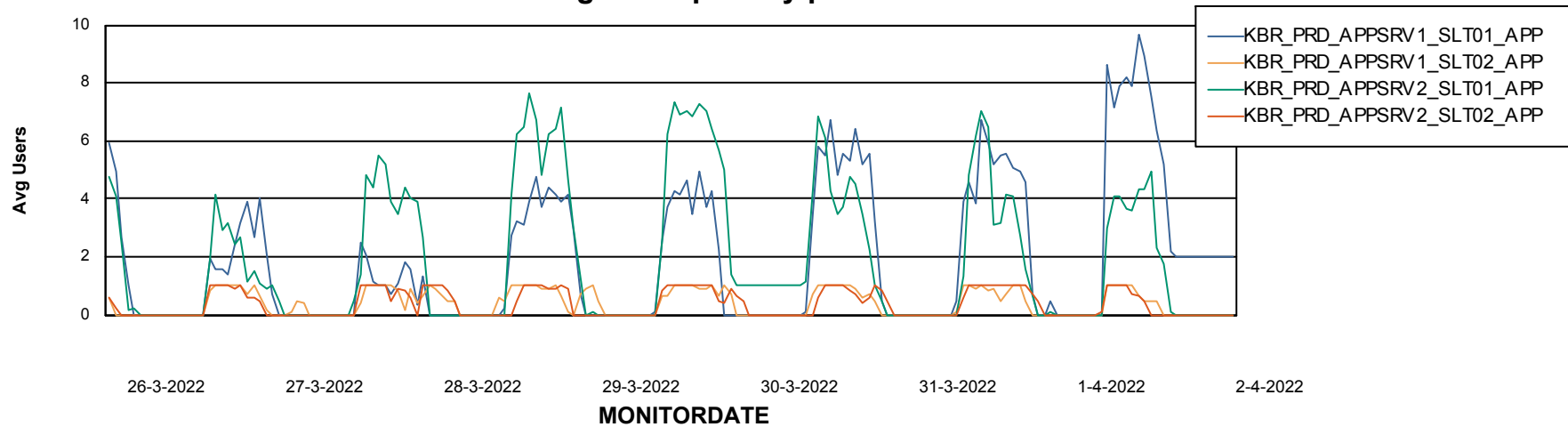


## ABSSolute Application Server Services

### Avg memory used per ReportServer Service



### Avg users per day per ABS server



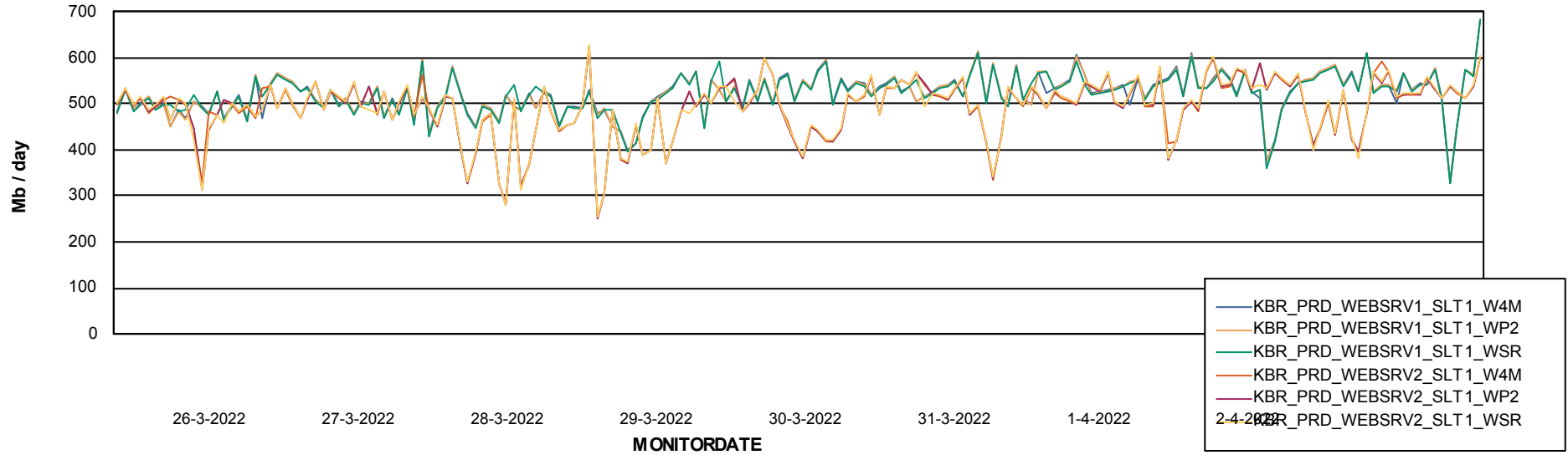
# Weekly SLA Customer Report

Customer KBR\_Production  
Database ID 117



## ABSSolute Web Component Services

### Avg memory used per ABS Web component



# Weekly SLA Customer Report

Customer KBR\_Production  
Database ID 117



## Disaster per ABS component

